

2nd Annual 2025 Spring Home Showcase

PRESENTED BY SHBA & STRIDE MORTGAGE,
A DIVISION OF STRIDE BANK N.A.



SCAN ME



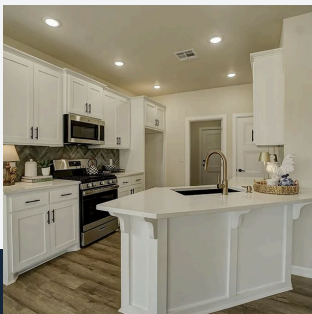
*204 Outlander Way

*Stride Mortgage a Division of Stride Bank N.A. is an Equal Housing Lender and Member FDIC. All loans subject to credit approval. This is not an offer to lend.

Come explore beautifully crafted homes by local builders during our 2025 Spring Home Showcase! Tour participating homes for a chance to win exciting prizes.

ENJOY GIVEAWAYS AND
REFRESHMENTS!

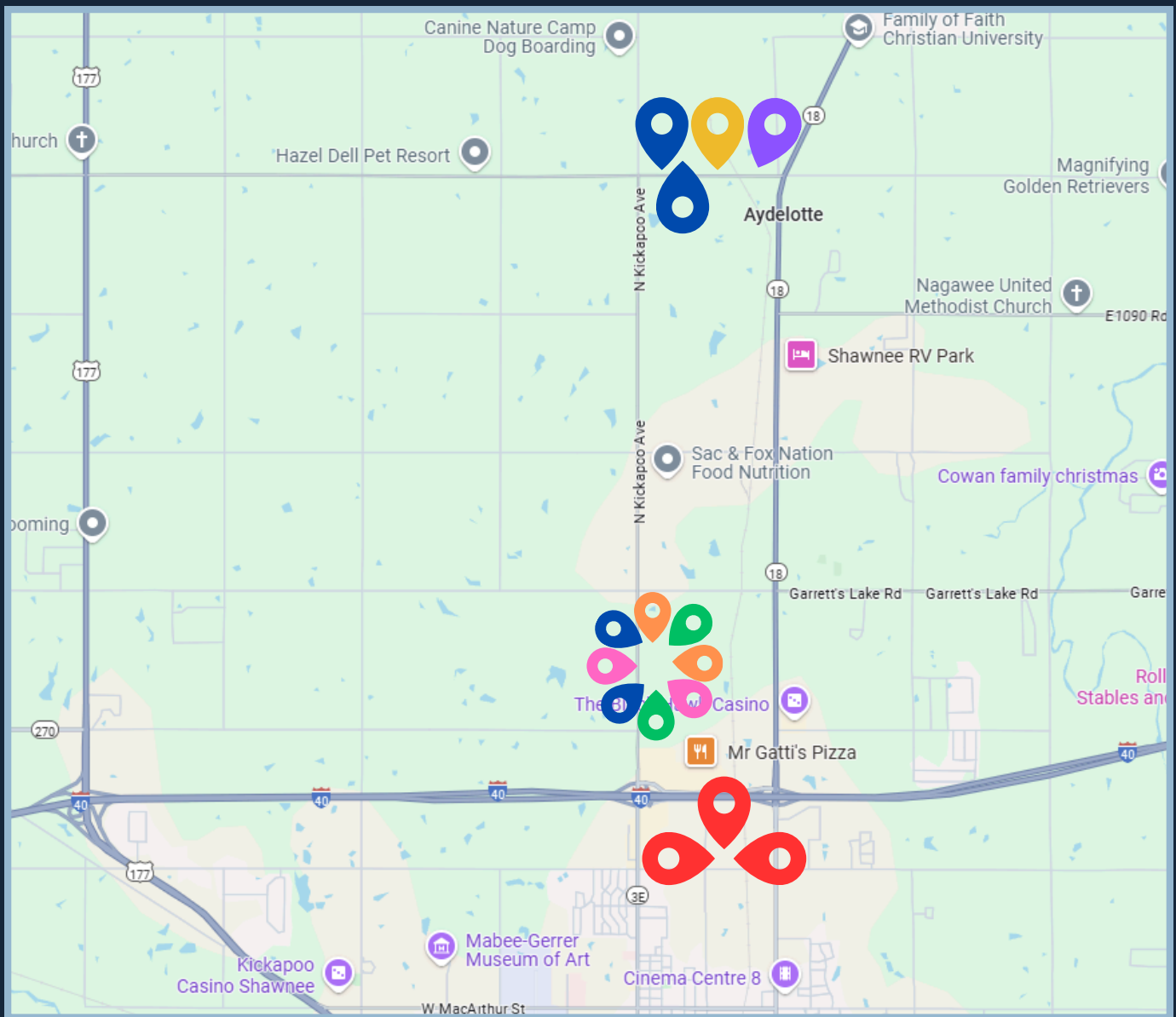
May 17th @ 10am - 4pm
May 18th @ 1pm - 4pm



SEE REVERSE SIDE FOR MORE DETAILS!



Spring Homes Showcase Map



SEBASTIAN HOMES LLC

- 41468 HAZEL DELL SHAWNEE – NORTH POINT ADDITION (LOTS FOR SALE – BUILD YOUR CUSTOM HOME)
- 10641 N KICKAPOO SHAWNEE – NEW HOME -NORTH POINT ADDITION II
- 217 SHAVANO ST SHAWNEE – NEW HOME – TRAILS END ADDITION
- 6209 RIVER GATE SHAWNEE – NEW HOME- TRAILS END ADDITION

ARRINGTON HOMES

- 204 OUTLANDER WAY – NEW HOME- TRAILS END ADDITION
- 6202 HIDEAWAY – NEW HOME- TRAILS END ADDITION

LILLEY SIGNATURE HOMES

- 6207 RIVERGATE DR- NEW HOME- TRAILS END ADDITION
- 211 SHAVANO – NEW HOME- TRAILS END ADDITION

JOSH LITTLE CONSTRUCTION & BRYAN LITTLE HOMES

- 4529 RED BIRD – NEW HOME- CARDINAL POINT ADDITION
- 509 BLUE BIRD- NEW HOME- CARDINAL POINT ADDITION
- 507 BLUE BIRD- NEW HOME, UNDER CONSTRUCTION- CARDINAL POINT ADDITION

SWEET B HOMES

- 41818 HAZEL DELL- NEW HOME

GREG BROWN HOMES

- 6211 BUCKHORN- NEW HOME- TRAILS END ADDITION
- 212 SHAVANO- UNDER CONSTRUCTION – TRAILS END ADDITION

J&H HOMES LLC

- 41364 HAZEL DELL – UNDER CONSTRUCTION