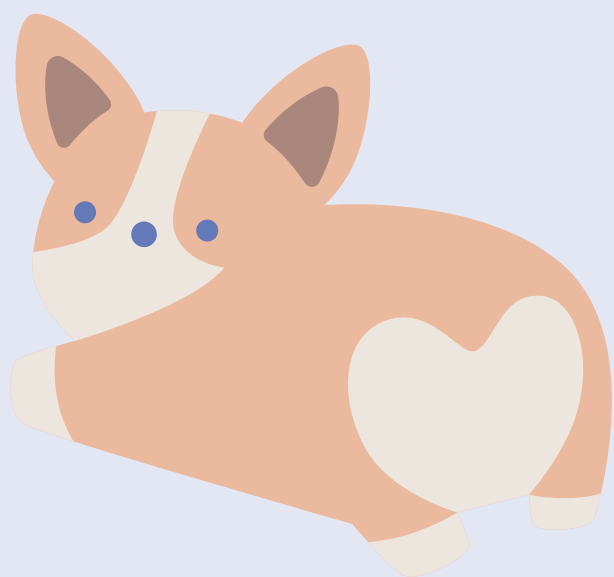


Nurturing a Pleasant Puppy

Puppy Socialization



Early Exposure:

Visual Exploration: Encourage exposure to various environments, sights, and sounds to prevent fear of the unfamiliar.

Positive Handling: Introduce gentle handling to help puppies feel comfortable with human touch.

Canine Companionship:

Playdates: Organize controlled playdates with well-behaved and vaccinated dogs to promote positive interactions.

Dog Park Etiquette: Teach responsible behavior and proper social cues in off-leash environments.



Human Encounters:

Meet-and-Greets: Facilitate positive interactions with diverse people, including children, to build confidence and ease anxiety.

Handling by Strangers: Introduce your puppy to various individuals to ensure they are comfortable with different handling styles.

Environmental Variety:

Different Surfaces: Expose your puppy to various surfaces like grass, concrete, and sand to enhance adaptability.

Various Sounds: Gradually introduce common household and outdoor noises to prevent anxiety in different settings.



Positive Reinforcement:

Rewards for Good Behavior: Use treats and praise to reinforce positive behavior during new experiences.

Association with Pleasant Experiences: Pair new encounters with enjoyable activities to create positive associations.

Continuing Puppy Socialization



Training Integration:
Basic Commands: Integrate basic commands like "sit" and "stay" during socialization outings for a well-behaved and responsive puppy.
Leash Manners: Teach proper leash manners to ensure controlled and enjoyable walks.

Vet Visits and Handling:
Frequent Vet Visits: Regular visits to the vet for positive check-ups help normalize healthcare experiences.
Gentle Handling Practice: Get your puppy accustomed to being handled by the veterinarian to minimize stress during examinations.



Public Spaces and Events:
Crowds and Events: Gradually expose your puppy to public spaces, events, and gatherings to instill confidence in diverse environments, ensuring they remain calm and well-behaved.



Exposure to Different Textures: Paw Pad Engagement: Introduce various textures under your puppy's paws, like carpets, tiles, and grass, to enhance sensory experiences and promote comfort on different surfaces.



Remember, the early weeks and months are crucial for shaping your puppy's perception of the world. This guide empowers you to create positive experiences, paving the way for a socially adept and well-adjusted canine companion. Download our Puppy Socialization Guide now to embark on this exciting journey with your new furry friend!