

Training Games and Fun Exercises:

What's Inside:

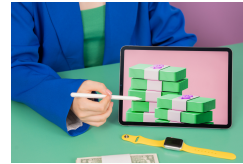
Hide and Seek

Tug-of-War

Interactive
Puzzles and
More!

Feel
our impact

Glimpse
our plans



Hide and Seek!



Objective: Hide and Seek is a delightful game that taps into a dog's natural instincts while reinforcing obedience commands and promoting mental stimulation. The objective is to encourage your dog

How to Play:

Start Simple:

Begin in a familiar, low-distraction environment. Show your dog a treat or favorite toy to pique their interest.

Commands:

Reinforce basic commands such as "sit" and "stay" before hiding the item. This adds an extra layer

of training to the game.

Hide the Item:

While your dog is in a sit-stay position, find a simple hiding spot for the treat or toy. Initially, make it visible, so your dog understands the game.

Release and Find:

Release your dog with a cue like "find it" or "search." Encourage them to locate the hidden item using their sense of smell.

Gradual Complexity:

As your dog becomes proficient, increase the difficulty by hiding items in more challenging locations or introducing more distractions.

Positive Reinforcement:

Praise and reward your dog enthusiastically when they find the hidden item. Reinforce the connection between the command and the rewarding discovery.

Benefits:

- **Mental Stimulation:** Engages your dog's brain as they actively problem-solve to locate the hidden items.
- **Bonding Opportunity:** Strengthens the bond between you and your dog through positive interaction and shared enjoyment.
- **Obedience Reinforcement:** Integrates basic obedience commands into a playful activity, reinforcing good behavior.

Precautions:

- Ensure that the hidden items are safe and appropriate for your dog.
- Monitor your dog to prevent them from becoming overly excited or frustrated.
- Keep the initial hiding spots simple, gradually increasing difficulty as your dog becomes more adept at the game.

Hide and Seek is a versatile and enjoyable game that can be adapted to suit various environments, making it a fantastic addition to your repertoire of interactive activities with your furry friend.

Tug-of-War



Objective: Tug-of-War is a popular and interactive game that allows dogs to engage in a friendly and controlled struggle over a toy or rope. The objective is to provide both mental and physical stimulation while reinforcing obedience commands, particularly the "drop it" or "leave it" cues.

How to Play:

Select a Tug Toy:

Choose a sturdy tug toy, specifically designed for this game, to ensure safety for both you and your dog.

Initiate the Game:

Encourage your dog to grab one end of the tug toy. Use an enthusiastic tone to make it clear that playtime has begun.

Play Responsibly:

Engage in gentle tugging, allowing your dog to pull in their direction. Maintain control to ensure a safe and enjoyable experience.

Incorporate Commands:

Integrate commands like "take it," "drop it," or "leave it" to establish control over the game. Reward compliance with praise and treats.

Ending the Game:

Signal the end of the game by asking your dog to "drop it" and releasing the tug toy. Reward them for following the command.

Positive Reinforcement:

Throughout the game, provide positive reinforcement for appropriate behavior, reinforcing the bond between you and your dog.

Benefits:

- **Physical Exercise:** Tug-of-War provides an outlet for physical energy and helps strengthen your dog's jaw, neck, and shoulder muscles.
- **Bonding Opportunity:** The game fosters a sense of teamwork and reinforces the bond between you and your dog through shared play.

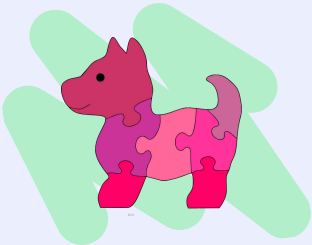
- **Obedience Reinforcement:** Incorporating commands adds an educational component, reinforcing obedience and respect for your cues.

Precautions:

- Use a designated tug toy that is safe and suitable for this activity.
- Ensure your dog has a reliable "drop it" or "leave it" command to maintain control.
- Be mindful of your dog's size and strength to prevent injury, especially for small breeds.

Tug-of-War, when played responsibly, can be a fun and enriching activity for dogs, promoting physical health, mental stimulation, and positive interaction with their owners.

Interactive Puzzles and Toys



Objective: Interactive puzzle toys are designed to mentally stimulate and engage dogs by challenging their problem-solving skills. These toys often involve hiding treats or kibble inside, requiring the dog to figure out how to access the rewards. The objective is to provide mental enrichment, alleviate boredom, and encourage dogs to use their intelligence during play.

How to Use:

Select the Right Toy:

Choose an interactive puzzle toy that matches your dog's size, skill level, and preferences. There are various types, including treat dispensers, puzzle feeders, and toys with hidden compartments.

Introduce the Toy:

Familiarize your dog with the puzzle toy by letting them investigate it without treats first. Allow them to understand that the toy can dispense rewards.

Place Treats Inside:

Insert treats or kibble into the toy's compartments, ensuring they are securely hidden. Some toys may have adjustable difficulty levels for added challenge.

Encourage Exploration:

Encourage your dog to explore the toy and discover how to access the treats. Some toys require rolling, pushing, or manipulating to release the rewards.

Supervise Initially:

Monitor your dog during the initial interactions to ensure they understand the concept and to prevent frustration. Offer guidance if needed.

Gradual Complexity:

As your dog becomes proficient, you can increase the complexity of the puzzles or use different toys to maintain their interest.

Benefits:

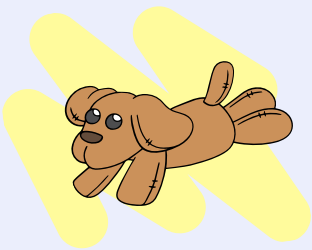
- **Mental Stimulation:** Interactive puzzle toys engage a dog's cognitive abilities, providing mental exercise and preventing boredom.
- **Slow Feeding:** Some puzzle feeders slow down eating, promoting better digestion and reducing the risk of overeating.
- **Alleviates Boredom:** Particularly beneficial for dogs left alone during the day, these toys offer entertainment and enrichment.

Precautions:

- Choose puzzle toys made from safe and durable materials, ensuring they are suitable for your dog's chewing style.
- Supervise play to prevent the dog from attempting to chew or ingest non-edible parts of the toy.
- Be mindful of your dog's frustration level, and start with simpler puzzles before progressing to more complex ones.

Interactive puzzle toys are a fantastic addition to your dog's enrichment routine, keeping them mentally engaged, happy, and satisfied.

Name That Toy



Objective: "Name That Toy" is a training game that involves teaching your dog to recognize and fetch specific toys by their names. The objective is to

How to Play:

Select Toys with Distinct Names:

Choose a set of toys, each with a distinct name. Start with two or three toys to keep it manageable.

Introduce Names:

Begin by introducing the names of the toys to your dog in a positive and encouraging tone. Repeat the names while showing the corresponding toys.

Repetition and Reinforcement:

Repeat the process regularly, associating each name with its respective toy. Use treats and praise as positive reinforcement when your dog pays attention to the named toys.

Individual Naming Sessions:

Focus on one toy at a time during naming sessions. Repeat the name several times before rewarding your dog for correctly identifying and interacting with that specific toy.

Gradual Increase in Complexity:

As your dog becomes more proficient, introduce additional toys and names, gradually increasing the complexity of the game.

Encourage Fetching by Name:

Encourage your dog to fetch a specific toy by calling its name. Reward successful retrievals with treats and praise.

Benefits:

- **Cognitive Stimulation:** Engages your dog's brain by requiring them to recognize and remember names associated with specific toys.
- **Enhanced Communication:** Strengthens the communication between you and your dog, as they learn to respond to verbal cues for individual toys.
- **Fun and Interactive:** Adds an entertaining and interactive element to playtime, making learning enjoyable for your furry friend.

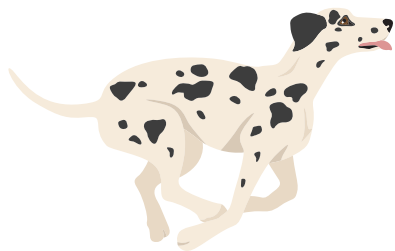
Precautions:

- Keep the naming sessions short and positive to maintain your dog's interest.
- Use high-value treats and enthusiastic praise to reinforce correct responses.
- Be patient, and progress at a pace that matches your dog's learning ability.

"Name That Toy" is a delightful and educational game that not only exercises your dog's cognitive skills but also reinforces the bond between you and your canine companion.

Other Games to Consider:

At Home Agility Course



Objective:

Creating an agility course at home involves setting up a series of obstacles and challenges for your dog to navigate. The objective is to provide physical exercise, mental stimulation, and strengthen the bond between you and your furry friend while introducing elements of agility training.

How to Set Up:

Choose Suitable Obstacles:

Select household items that can be repurposed as agility obstacles, such as tunnels (made from chairs and blankets), jumps (using broomsticks or low hurdles), or weave poles (created with PVC pipes or household items).

Design the Course:

Plan the layout of your agility course, considering the available space. Arrange obstacles in a sequence that allows your dog to move fluidly from one to the next.

Introduce Commands:

Reinforce basic commands such as "jump," "tunnel," or "weave" as you guide your dog through the course. Use treats and positive reinforcement to encourage participation.

Start Simple:

Initially, keep the course simple with low jumps and straight-line weaves. Gradually increase the difficulty as your dog becomes more comfortable.

Encourage Engagement:

Make the course engaging by incorporating turns, changes in direction, and rewarding your dog's successful completion of each obstacle.

Safety First:

Ensure that all obstacles are stable and safe for your dog to navigate. Avoid high jumps for puppies or dogs with physical limitations.

Benefits:

- **Physical Exercise:** Agility courses provide an outlet for physical energy, promoting cardiovascular health and muscle strength.
- **Mental Stimulation:** Navigating obstacles requires problem-solving skills, offering mental exercise and preventing boredom.

- **Bonding Opportunity:** Working together through the agility course strengthens the bond between you and your dog, enhancing teamwork.

Precautions:

- Use stable and safe materials for constructing agility obstacles.
- Be mindful of your dog's physical capabilities, adjusting the course difficulty accordingly.
- Start with low-impact obstacles and gradually increase height or complexity.

Creating an agility course at home is a fantastic way to engage your dog both physically and mentally. It transforms ordinary spaces into fun, interactive environments, providing a playful and enriching experience for your furry companion.

How to Play:

Select Energetic Music:

Choose lively and upbeat music to create a playful atmosphere. Ensure it's a familiar tune that your dog enjoys.

Start the Dance:

Begin dancing or moving around with your dog in a designated play area. Encourage your dog to move and dance along with you.

Freeze Command:

Introduce a "freeze" command during the dance. Stop moving and use a specific cue such as "freeze" or "stop" to signal that your dog should also pause.

Reward for Freezing:

When your dog responds to the freeze command by stopping their movement, promptly reward them with treats and praise. Reinforce the positive behavior.

Resume Dancing:

Continue dancing and moving around, alternating between periods of activity and freeze commands. Vary the duration of freezes to keep it engaging.

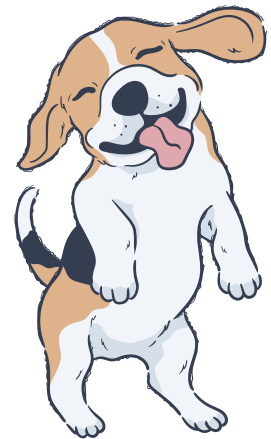
Gradual Complexity:

As your dog becomes more familiar with the game, you can increase the complexity by introducing additional commands or incorporating more challenging movements.

Benefits:

- **Impulse Control:** Freeze Dance helps develop impulse control in dogs, teaching them to respond to cues and pause during energetic activities.
- **Obedience Reinforcement:** The game reinforces basic commands such as "freeze," strengthening your dog's responsiveness to verbal cues.
- **Physical and Mental Stimulation:** Dancing and responding to commands provide a blend of physical exercise and mental engagement for your dog.

Freeze Dance



Objective:

Freeze Dance is a playful game that combines music, movement, and obedience cues to engage your dog in a fun and interactive activity. The objective is to promote impulse control, reinforce basic commands, and provide mental stimulation through a dynamic and entertaining game.

Precautions:

- Be mindful of your dog's comfort level with music and movement. Adjust the intensity based on their preferences.
- Use positive reinforcement consistently to create a positive association with the game.
- Avoid overexertion, especially for dogs with health or mobility issues.

Freeze Dance is a delightful and interactive way to have fun with your dog while reinforcing obedience and impulse control. It transforms playtime into an engaging activity that benefits both the physical and mental well-being of your furry friend.

Balance Exercise



Objective:

Balance exercises involve activities that challenge your dog's coordination and stability. The objective is to improve core strength, body awareness, and overall balance, contributing to physical fitness and enhancing your dog's overall well-being.

How to Conduct Balance Exercises:

Balance Pad or Mat:

Introduce a balance pad or mat as a stable surface for your dog to stand on. These can be purchased or improvised using non-slip materials.

Basic Stance:

Encourage your dog to stand on the balance pad with all four paws. Initially, they may need support, so stand close to provide reassurance.

Shift Weight:

Gently encourage your dog to shift their weight from side to side or front to back. This engages different muscle groups and improves balance.

Paws on Unstable Surfaces:

Gradually progress to having your dog place their front or rear paws on unstable surfaces, such as an inflatable balance disc or a cushion.

Weaving Through Poles:

Set up a series of low poles or markers in a straight line. Guide your dog to weave through them, encouraging side-to-side movement.

Raised Surfaces:

Introduce slightly elevated surfaces, like a low balance beam or a sturdy board, for your dog to walk across. This challenges their balance further.

Balance Ball:

For advanced exercises, incorporate a balance ball. Encourage your dog to stand with their front paws on the ball while maintaining stability.

Benefits:

- **Core Strength:** Balance exercises engage the core muscles, improving strength and stability.

- **Coordination:** Dogs develop better coordination as they learn to navigate uneven or unstable surfaces.
- **Body Awareness:** These exercises enhance your dog's awareness of their body in space, promoting better spatial understanding.

Precautions:

- Start with basic exercises and gradually increase difficulty based on your dog's comfort and ability.
- Use positive reinforcement, including treats and praise, to encourage participation.
- Monitor your dog closely to prevent fatigue or potential injury. If your dog seems uncomfortable, stop the exercise.

Balance exercises contribute to the physical well-being of your dog, providing a holistic approach to fitness that goes beyond traditional activities. Incorporating these exercises into your routine can enhance your dog's overall strength, stability, and coordination.

Remember To Have Fun:

In the delightful world of canine play, the key is simple: have fun and relish the moments with your dog. Whether you're navigating an agility course, cheering on during a game of "Freeze Dance," or sharing a quiet session of "Name That Toy," every interaction is a chance to strengthen your bond.

So, as you embark on these playful adventures, remember that it's not just about the games—it's about the shared joy, laughter, and the unique connection you have with your furry companion. Cherish these moments, savor the tail wags, and let the simple pleasure of play enrich your days together.

Contact

For further information, please reach out to us at OmegaPawsLLC@gmail.com

Omega Paws Dog Training

Phone: (626) 214-5170

Website: OmegaPaws.Org