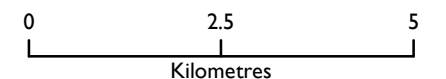


Legend

- Forthwind turbine location
- 2km buffer trimmed to coast
- 2km buffer
- UK and Ireland



Contains public sector information licensed under the Open Government Licence, v2.0

CLIENT **Cierco**

PROJECT **Forthwind**

DRAWING TITLE
Location of proposed Forthwind turbine and a 2km buffer

DRAWING NUMBER
HB00362-101-01-01

VERSION	DATE	Drawn	Checked	Approved
I	28/04/2021	JH	MS	AW

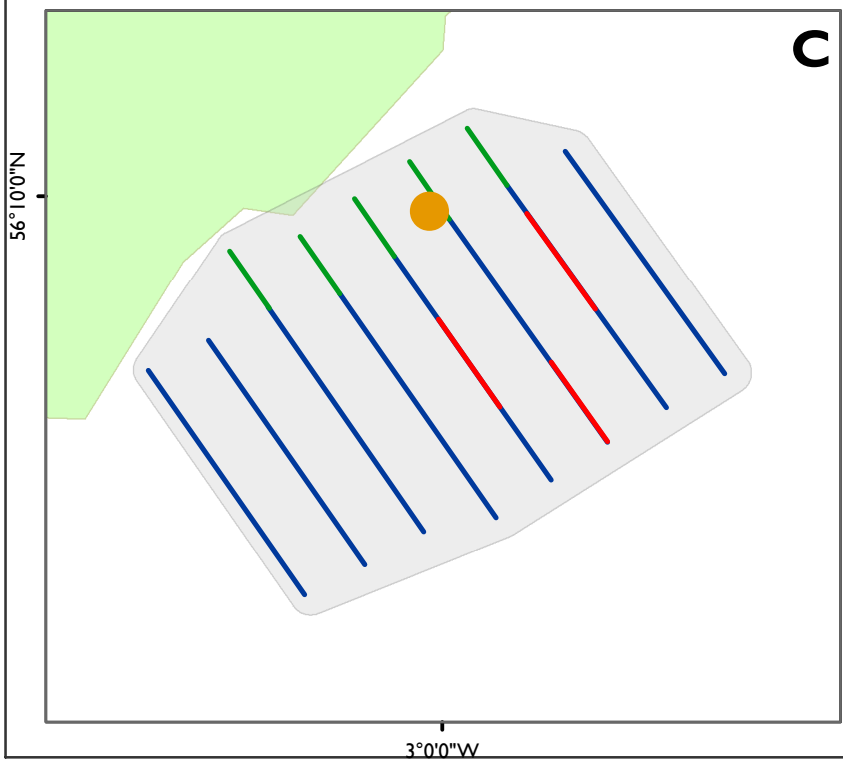
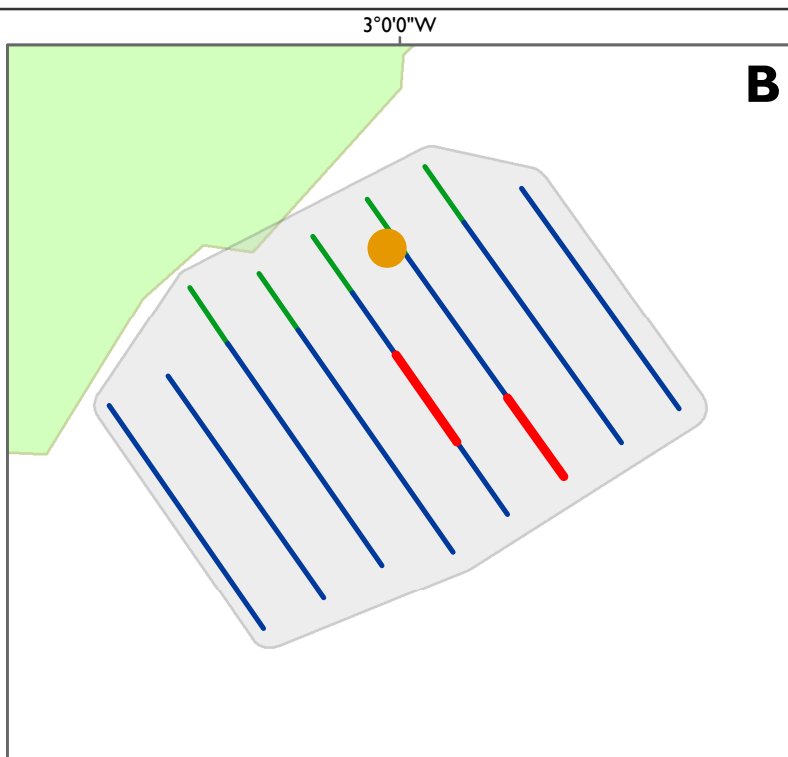
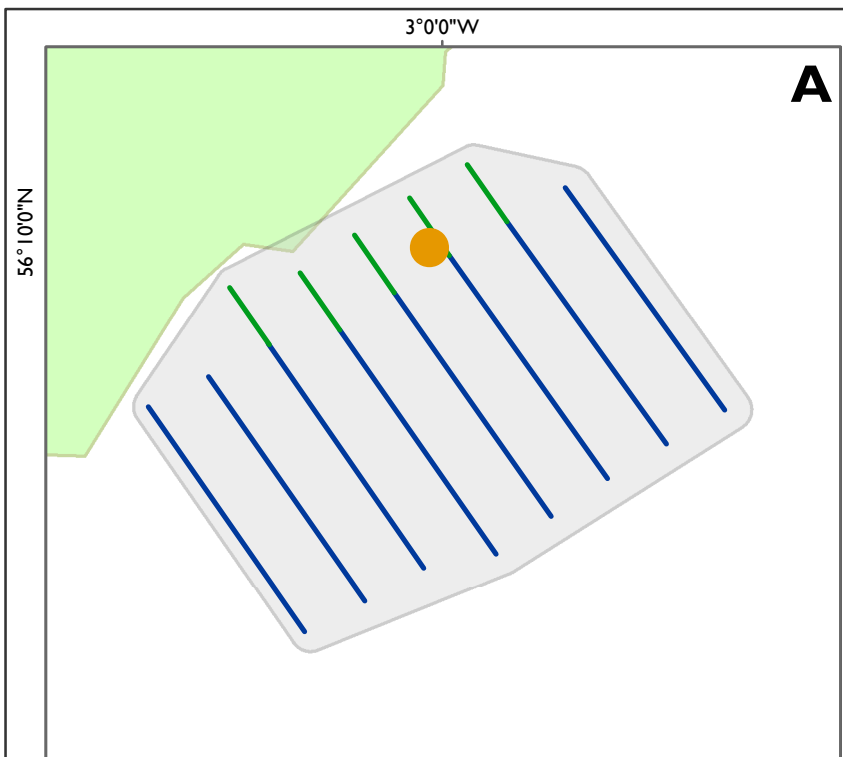
SCALE
1:98,299

PLOT SIZE
A3

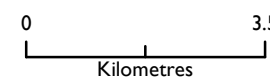
DATUM
WGS84

PROJECTION
UTM30N





- Forthwind
- Exclusion
- 4km Survey
- 1km Survey
- WeBS Site - East Wemyss to River Leven West Bank
- 2km Buffer trimmed to coast
- Survey
-



Contains public sector information licensed under the Open Government Licence v2.0

CLIENT **Cierco**

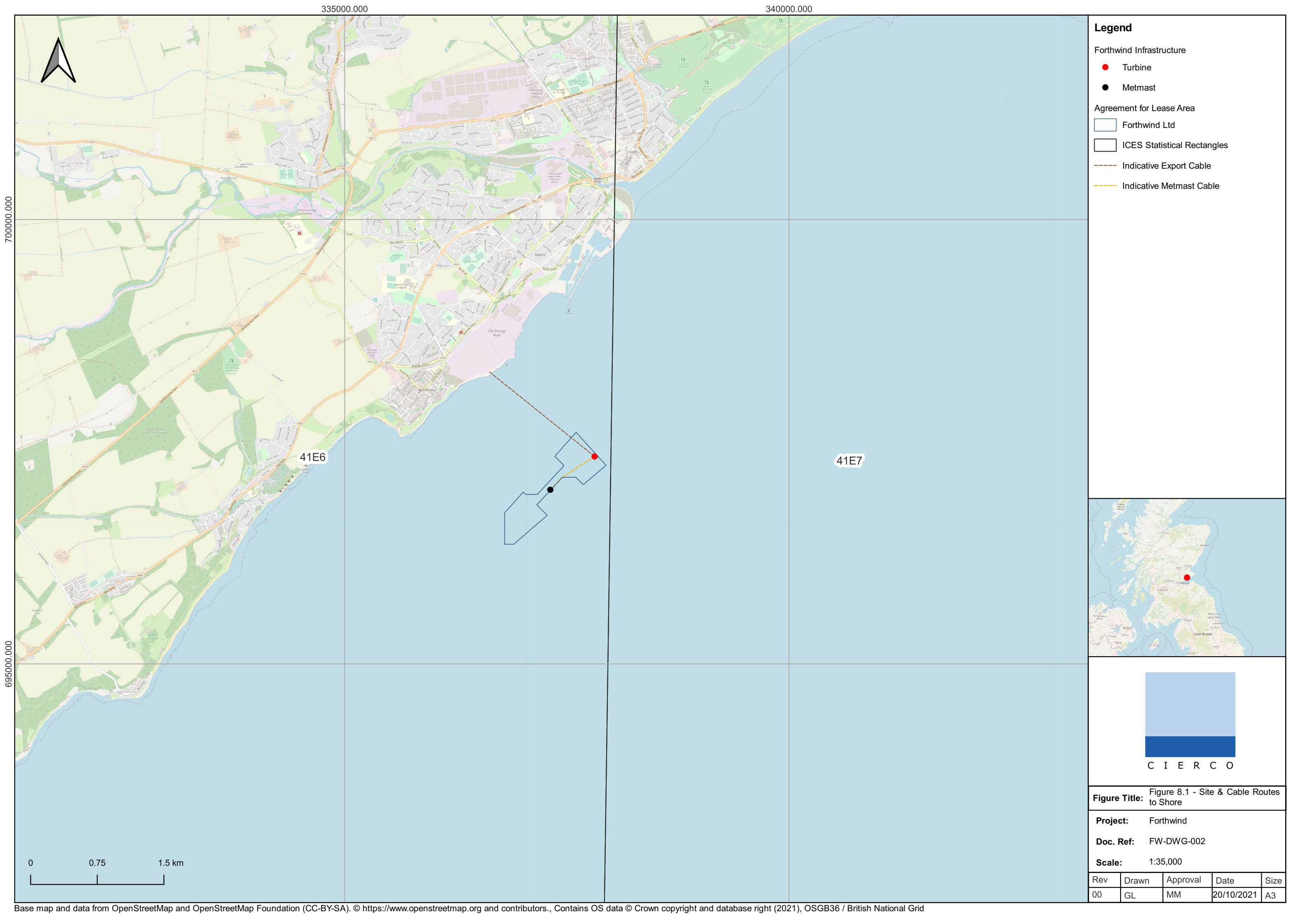
PROJECT **Forthwind**

DRAWING TITLE
Survey area and designed transects for the Proposed Development

DRAWING NUMBER
HB00362-101-01-03

VERSION	DATE	Drawn	Checked	Approved
1	14/04/2022	KT	MS	AW

SCALE 1:1,125,000	PLOT SIZE A4	HiDef AERIAL SURVEYING LIMITED
DATUM WGS84	PROJECTION UTM30N	



335000.000

340000.000

700000.000

695000.000

41E6

41E7

Legend

Forthwind Infrastructure

- Turbine
- Metmast

Agreement for Lease Area

- Forthwind Ltd
- ICES Statistical Rectangles
- Indicative Export Cable
- Indicative Metmast Cable



C I E R C O

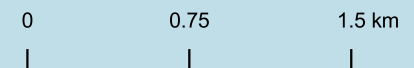
Figure Title: Figure 8.1 - Site & Cable Routes to Shore

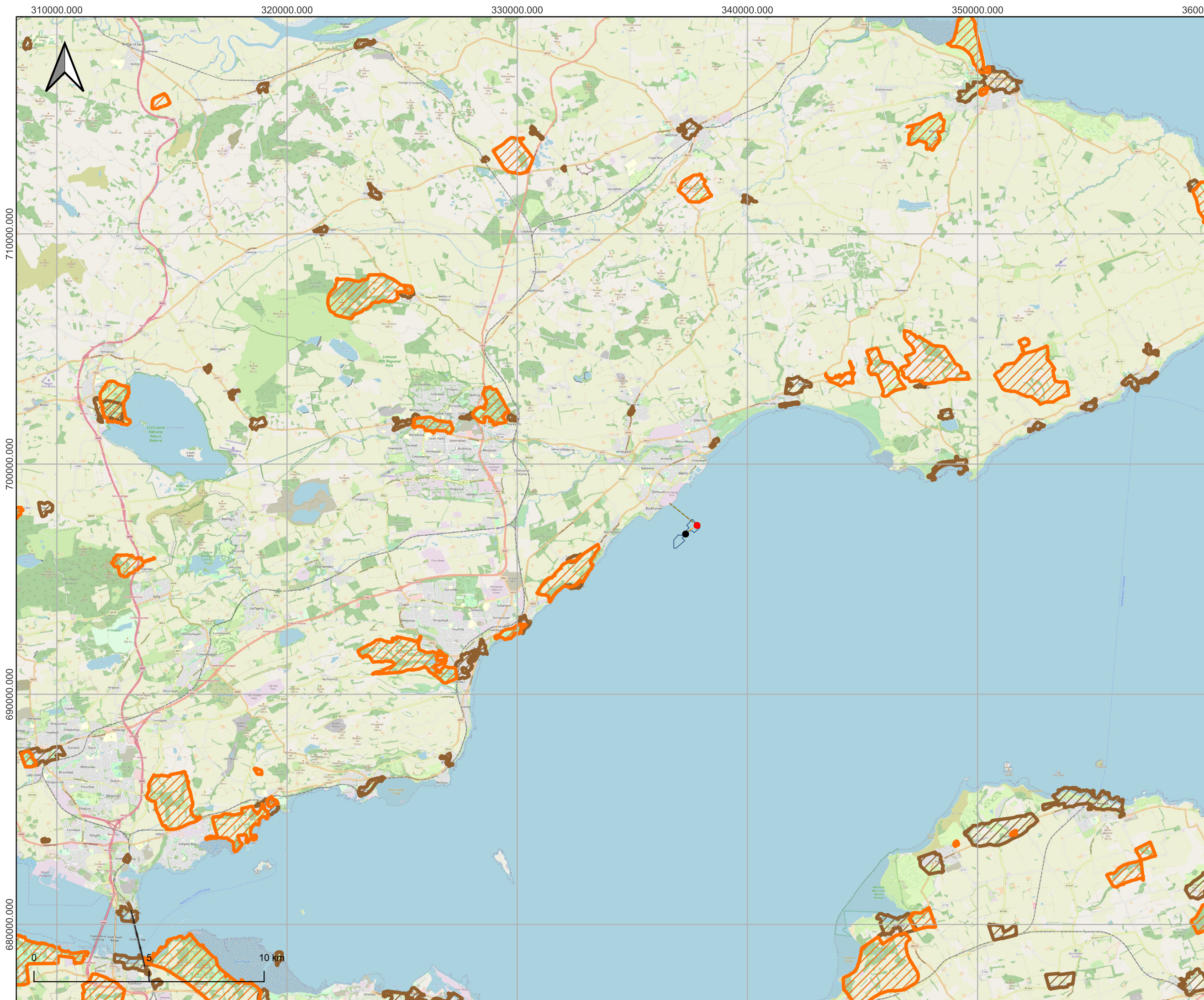
Project: Forthwind

Doc. Ref: FW-DWG-002

Scale: 1:35,000

Rev	Drawn	Approval	Date	Size
00	GL	MM	20/10/2021	A3





Legend

Forthwind Infrastructure

- Turbine
- Metmast

Agreement for Lease Area

- Forthwind Ltd
- Indicative Export Cable
- Indicative Metmast Cable

World Heritage Sites

- Gardens and Designated Landscapes
- Conservation Areas
- Forth Bridge World Heritage Site Boundary

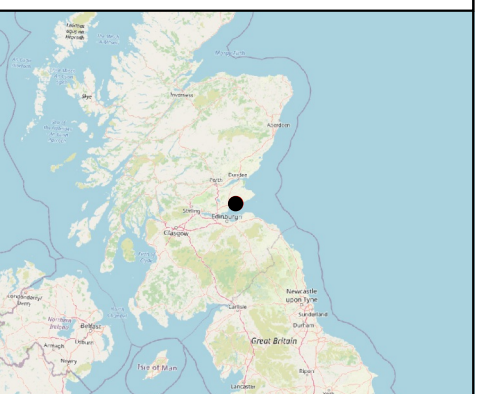


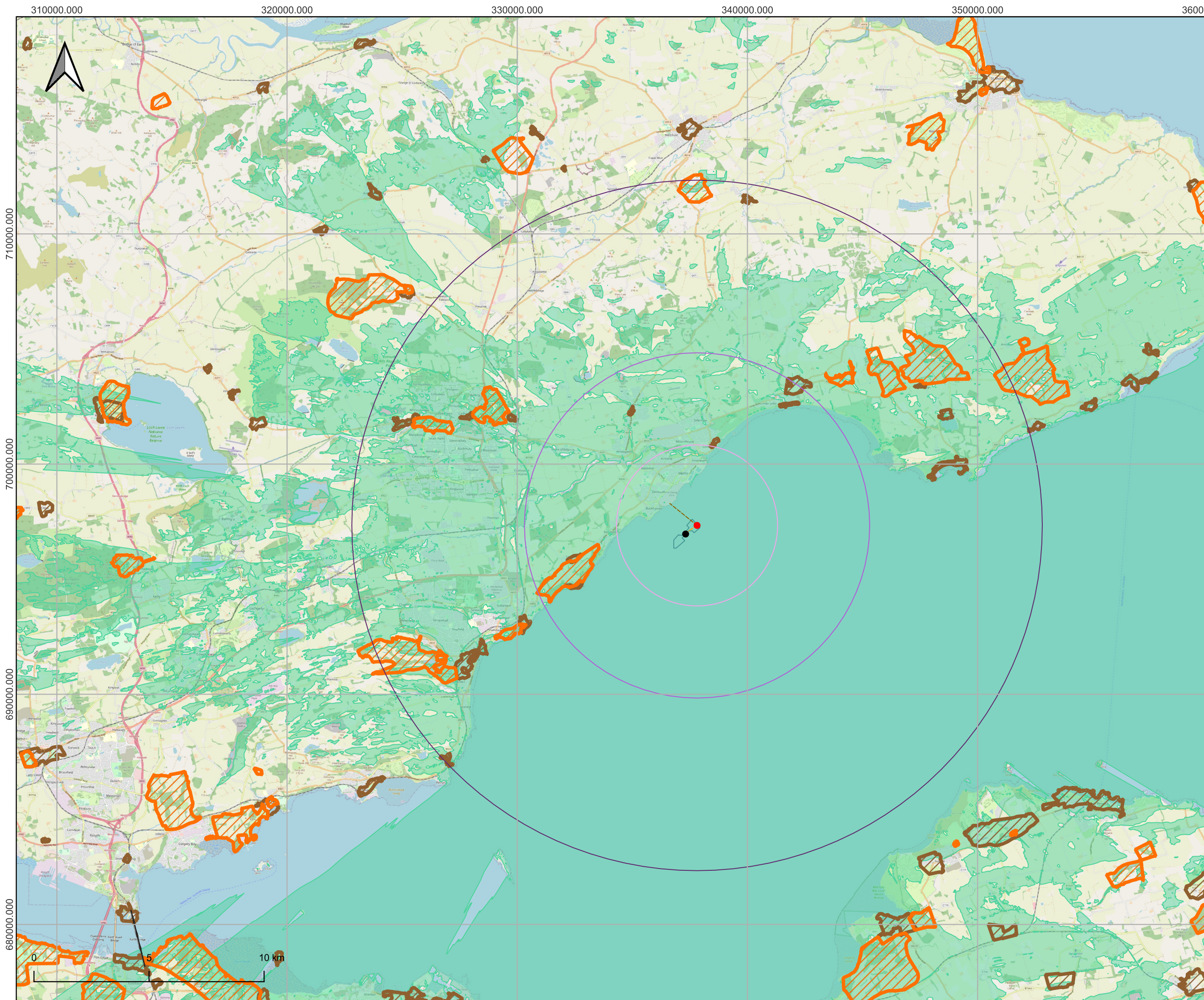
Figure Title: Figure 9.1 - Cultural Heritage Locations and Project Structures

Project: Forthwind

Doc. Ref: FW-DWG-008

Scale: 1:150,000

Rev	Drawn	Approval	Date	Size
00	GL	MM	20/10/2021	A3



- Legend**
- Forthwind Infrastructure**
- Turbine
 - Metmast
- Agreement for Lease Area**
- Forthwind Ltd
 - Indicative Export Cable
 - Indicative Metmast Cable
 - Forthwind Turbine 3.5 km Buffer
 - Forthwind Turbine 7.5 km Buffer
 - Forthwind Turbine 15 km Buffer
 - ▨ Gardens and Designated Landscapes
 - ▨ Conservation Areas
- World Heritage Sites**
- ▨ Forth Bridge World Heritage Site Boundary
 - Zone of Theoretical Visibility (ZTV)

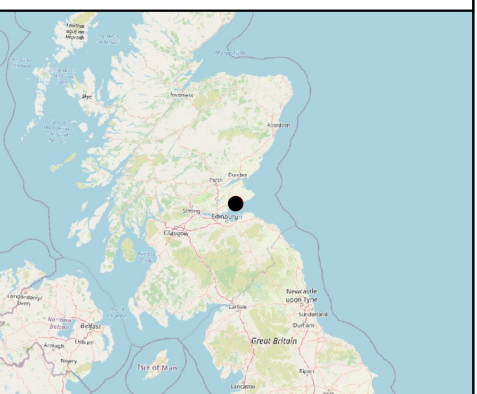
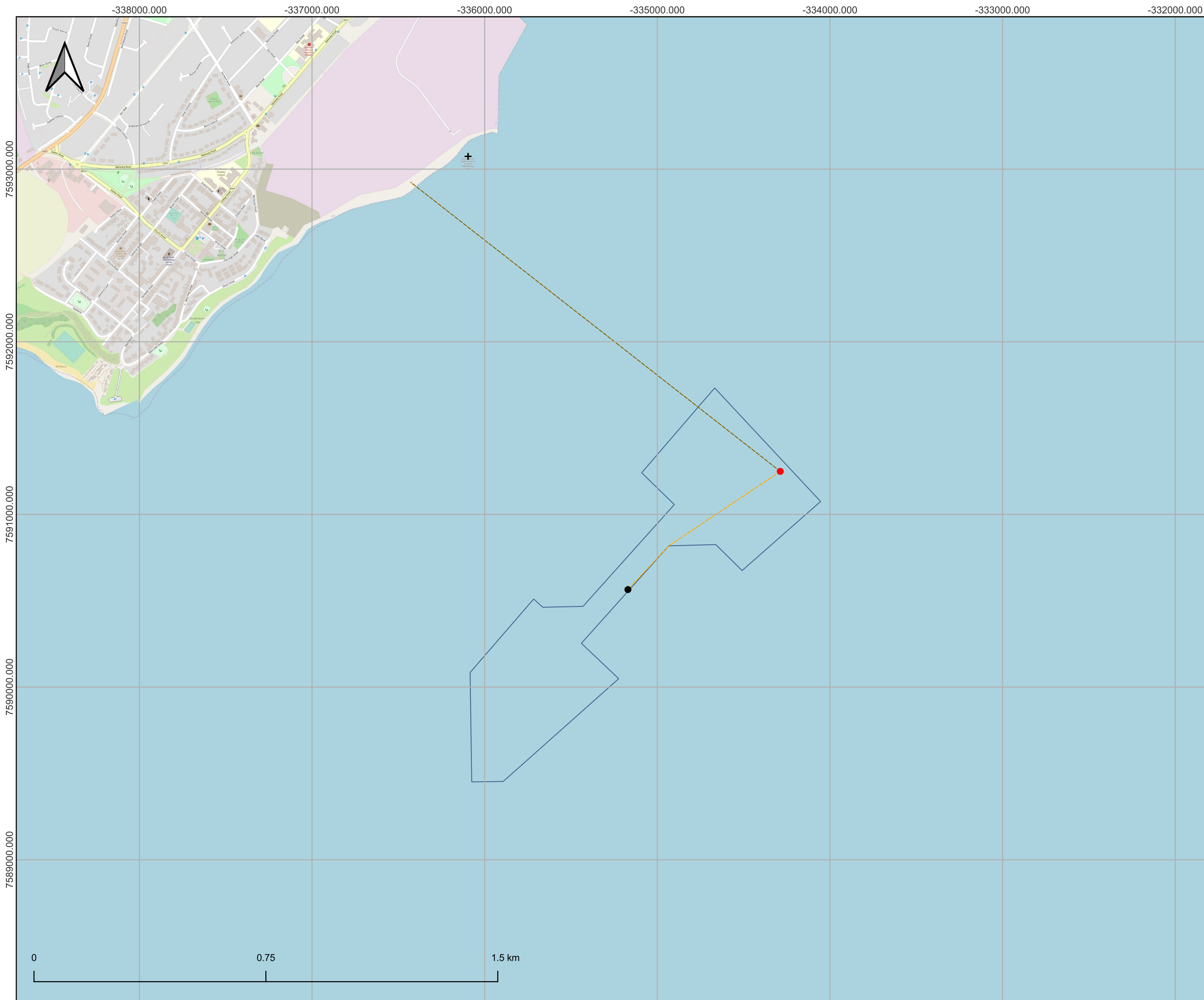


Figure Title: Figure 9.2 - ZTV with Cultural Heritage Locations and Project Structures

Project: Forthwind
Doc. Ref: FW-DWG-009
Scale: 1:150,000

Rev	Drawn	Approval	Date	Size
00	GL	MM	20/10/2021	A3



- Legend**
- Forthwind Infrastructure**
- Metmast
 - Turbine
- Agreement for Lease Area**
- Forthwind Ltd
 - - - Indicative Export Cable
 - Indicative Metmast Cable
 - + Levenmouth Turbine

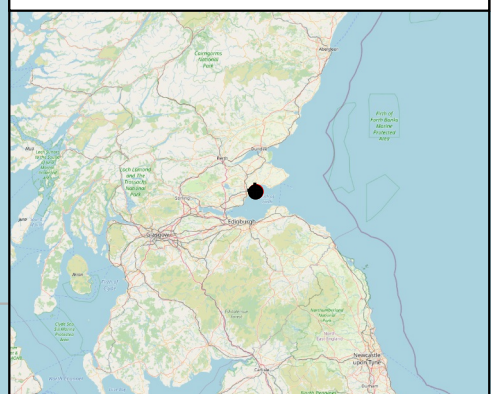


Figure Title: Figure 11.1 - Site Location Plan & Levenmouth Turbine

Project: Forthwind
Doc. Ref: FW-DWG-010
Scale: 1:20,000

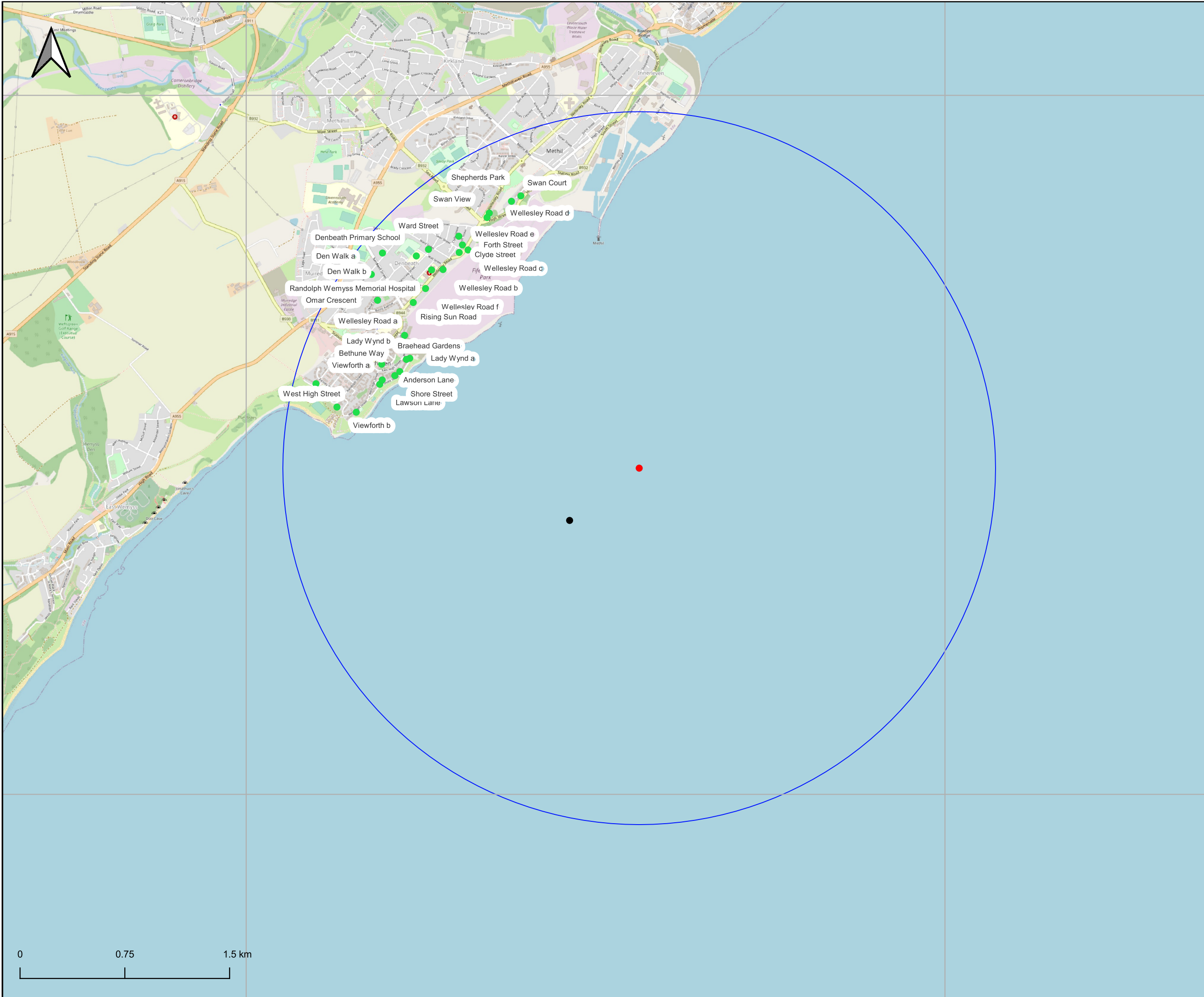
Rev	Drawn	Approval	Date	Size
00	GL	MM	8/11/2021	A3

335000.000

340000.000

700000.000

695000.000



Legend

Forthwind Infrastructure

- Turbine
- Metmast
- Forthwind Residential Properties within 2550m
- The Proposed Development Shadow Flicker Study Area (2550m)



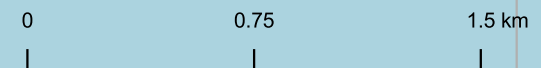
Figure Title: Figure 12.1 - Shadow Flicker Study Area

Project: Forthwind

Doc. Ref: FW-DWG-004

Scale: 1:25,000

Rev	Drawn	Approval	Date	Size
00	GL	MM	20/10/2021	A3

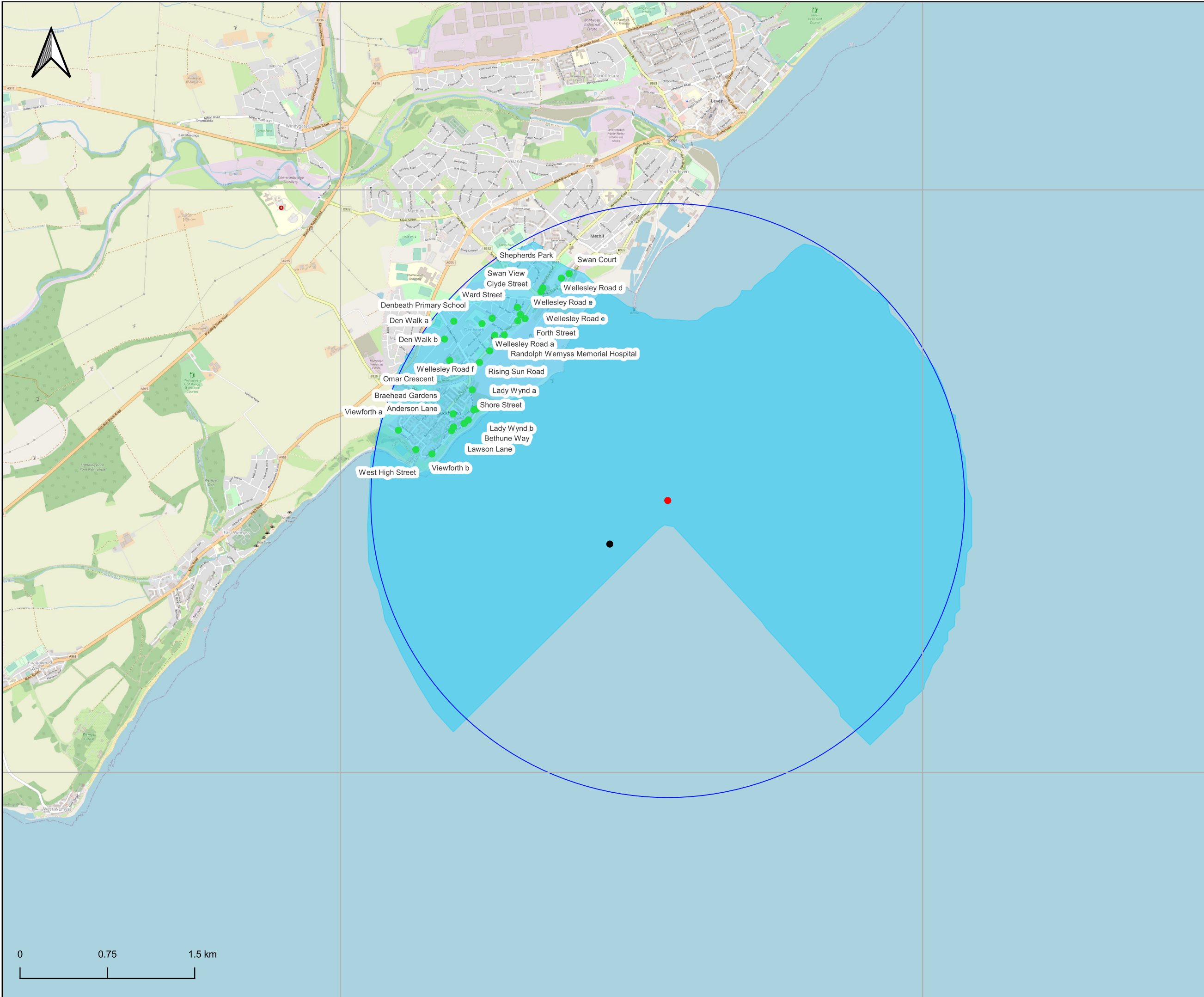


335000.000

340000.000

700000.000

695000.000



Legend

Forthwind Infrastructure

- Turbine
- Metmast
- The Proposed Development Shadow Flicker Study Area (2550m)
- Forthwind Residential Properties within 2550m
- Shadow Flicker Casting



C I E R C O

Figure Title: Figure 12.1 - Shadow Flicker Study Area

Project: Forthwind

Doc. Ref: FW-DWG-004

Scale: 1:30,000

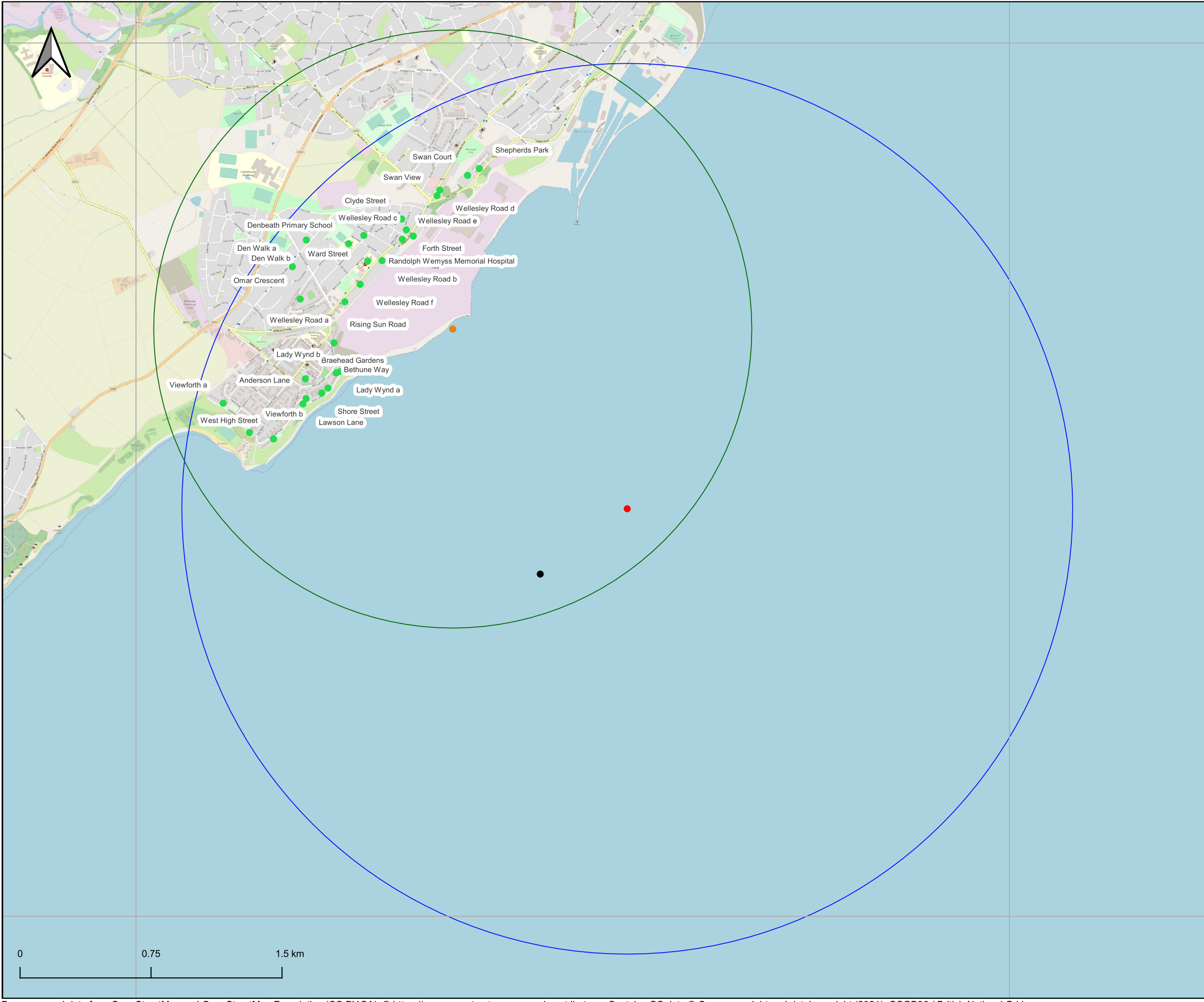
Rev	Drawn	Approval	Date	Size
00	GL	MM	20/10/2021	A3

335000.000

340000.000

700000.000

695000.000



Legend

Forthwind Infrastructure

- Turbine
- Metmast
- Levenmouth Demonstration Turbine
- Forthwind Residential Properties within 2550m
- The Proposed Development Shadow Flicker Study Area (2550m)
- The Levenmouth Demonstration Turbine Shadow Flicker Area (1712 m)



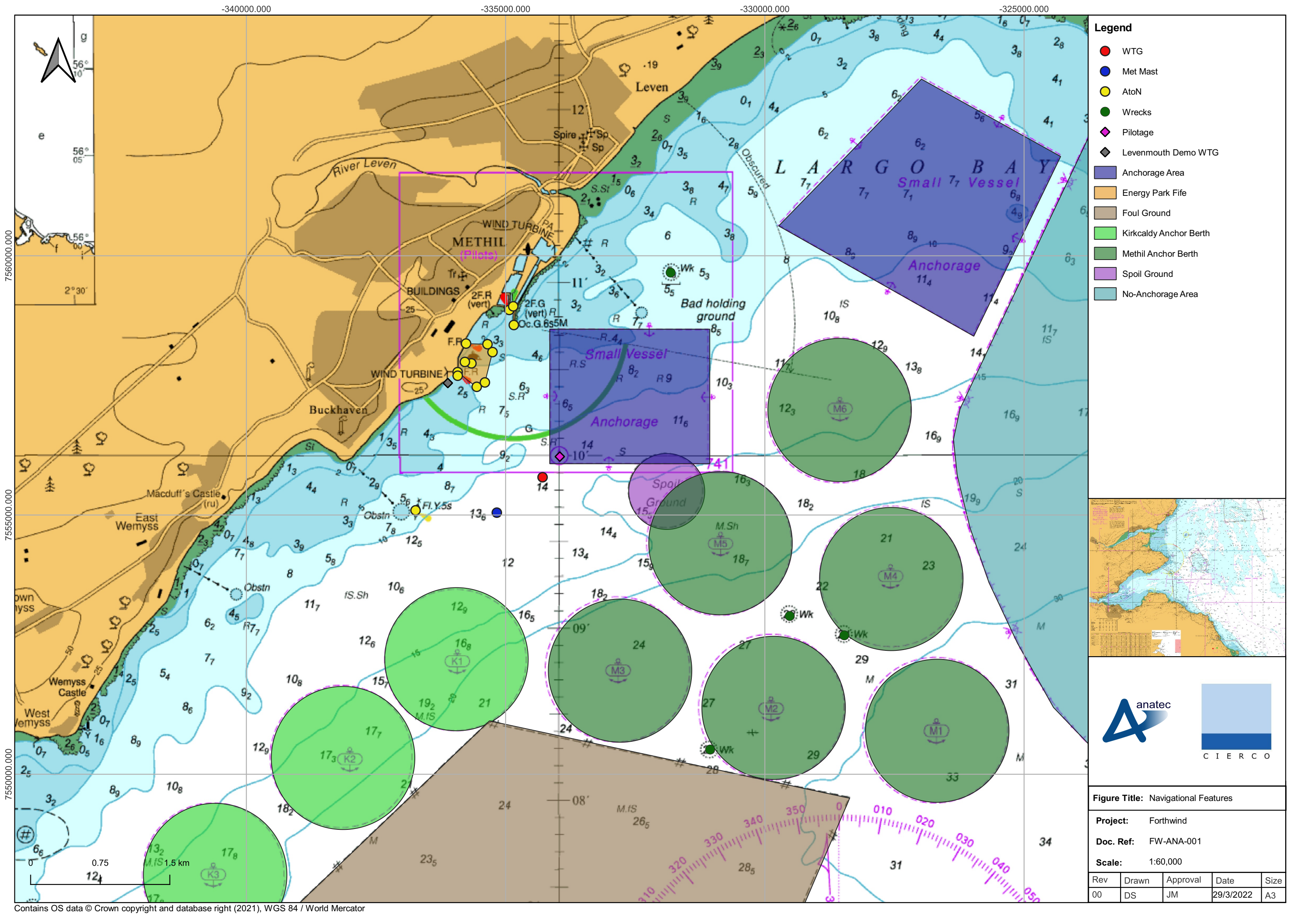
Figure Title: Figure 12.3 - Cumulative Shadow Flicker Study Area

Project: Forthwind

Doc. Ref: FW-DWG-005

Scale: 1:20,000

Rev	Drawn	Approval	Date	Size
00	GL	MM	20/10/2021	A3



- Legend**
- WTG
 - Met Mast
 - AtoN
 - Wrecks
 - ◆ Pilotage
 - ◆ Levenmouth Demo WTG
 - Anchorage Area
 - Energy Park Fife
 - Foul Ground
 - Kirkcaldy Anchor Berth
 - Methil Anchor Berth
 - Spoil Ground
 - No-Anchorage Area

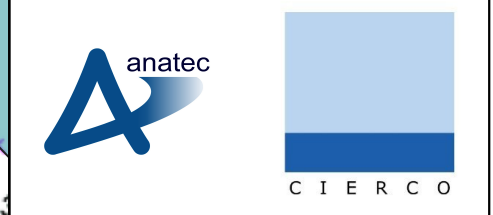
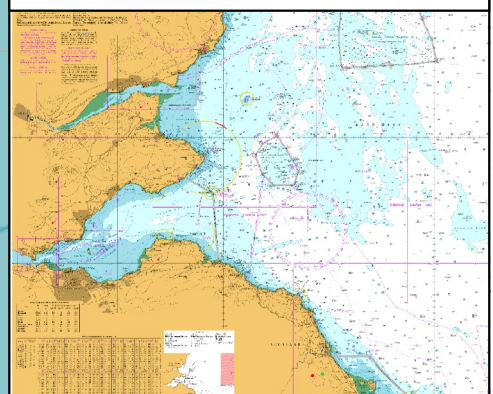


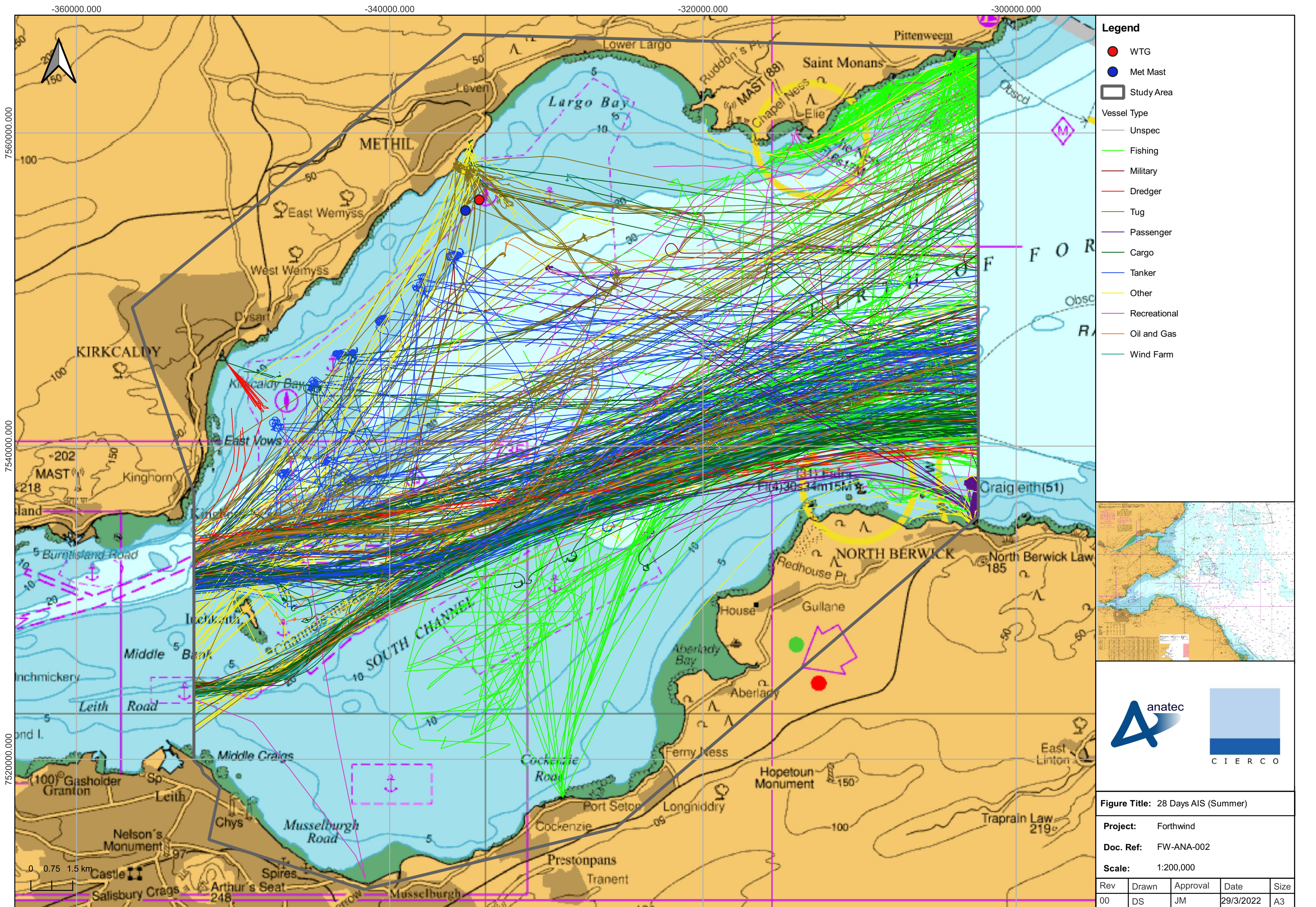
Figure Title: Navigational Features

Project: Forthwind

Doc. Ref: FW-ANA-001

Scale: 1:60,000

Rev	Drawn	Approval	Date	Size
00	DS	JM	29/3/2022	A3



- Legend**
- WTG
 - Met Mast
 - Study Area
- Vessel Type
- Unspec
 - Fishing
 - Military
 - Dredger
 - Tug
 - Passenger
 - Cargo
 - Tanker
 - Other
 - Recreational
 - Oil and Gas
 - Wind Farm

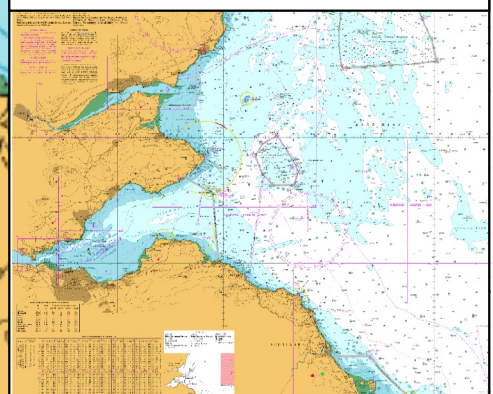


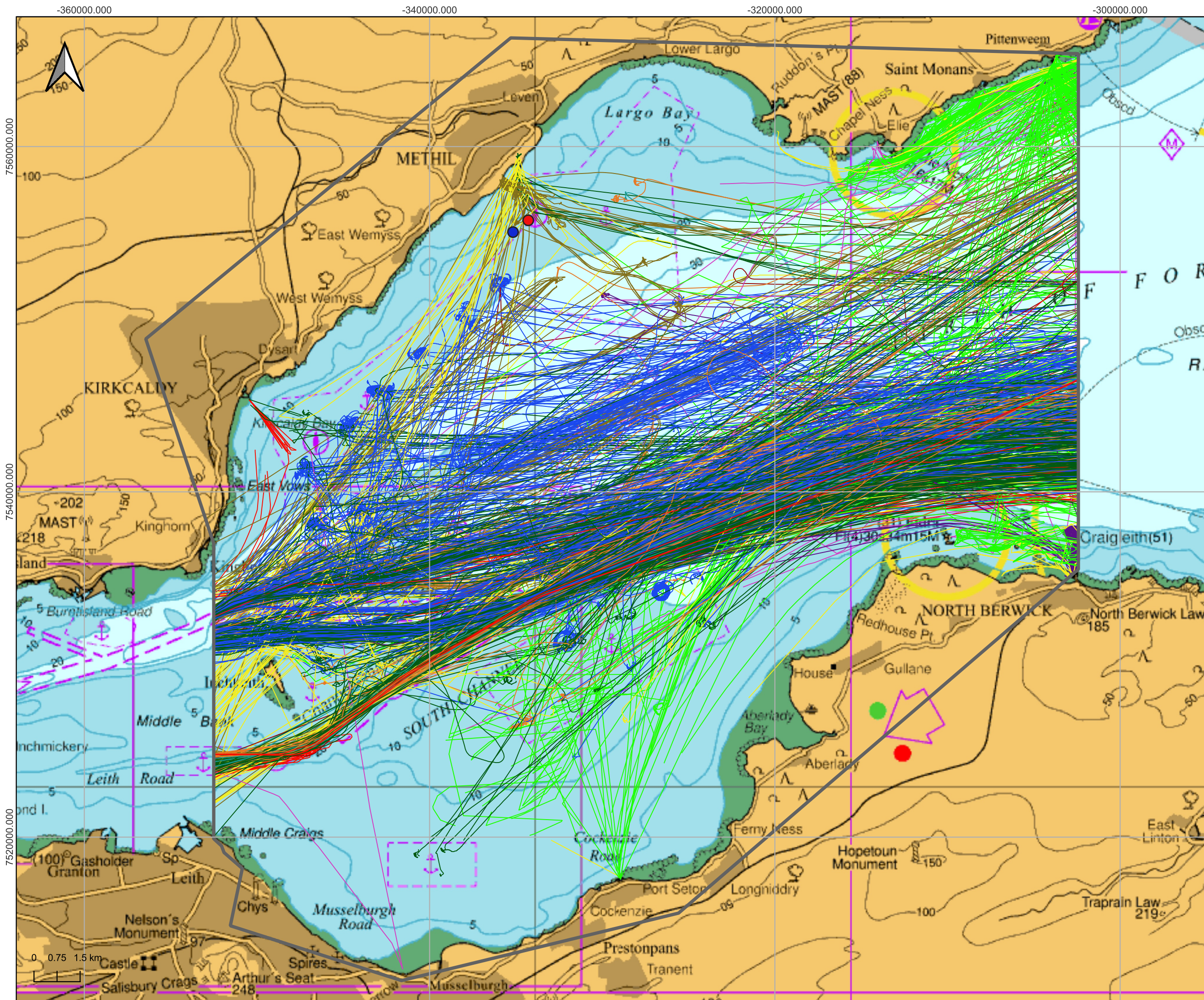
Figure Title: 28 Days AIS (Summer)

Project: Forthwind

Doc. Ref: FW-ANA-002

Scale: 1:200,000

Rev	Drawn	Approval	Date	Size
00	DS	JM	29/3/2022	A3



- Legend**
- WTG
 - Met Mast
 - Study Area
- 56 Days Combined AIS-Cropped
- Unspec
 - Fishing
 - Military
 - Dredger
 - Tug
 - Passenger
 - Cargo
 - Tanker
 - Other
 - Recreational
 - Oil and Gas
 - Wind Farm

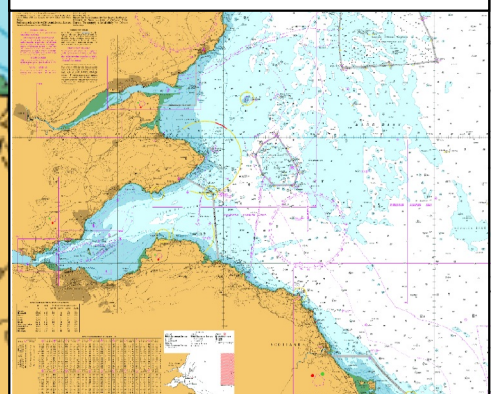


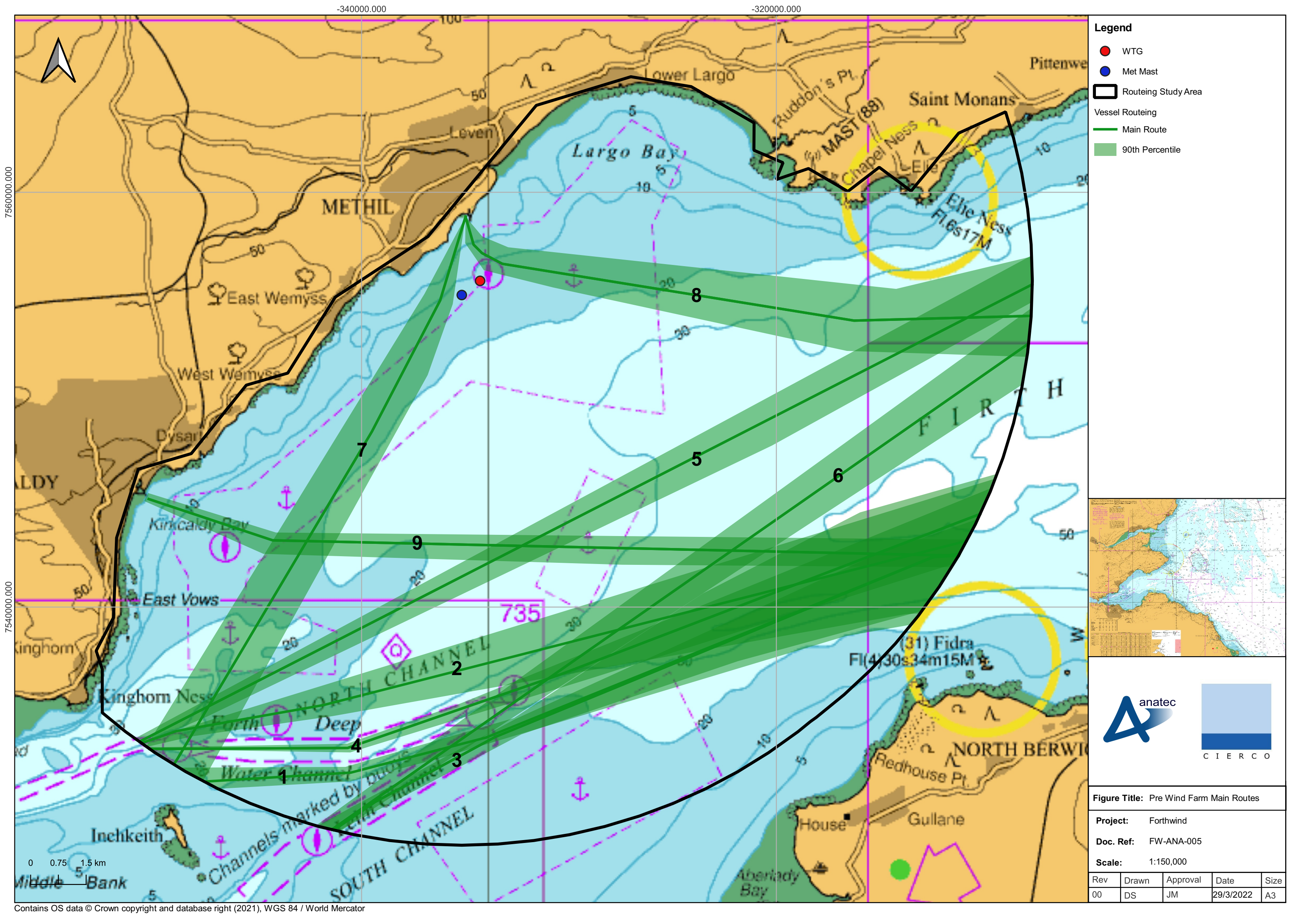
Figure Title: 56 Days AIS

Project: Forthwind

Doc. Ref: FW-ANA-007

Scale: 1:200,000

Rev	Drawn	Approval	Date	Size
00	DS	JM	29/3/2022	A3



Legend

- WTG
- Met Mast
- Routing Study Area

Vessel Routing

- Main Route
- 90th Percentile

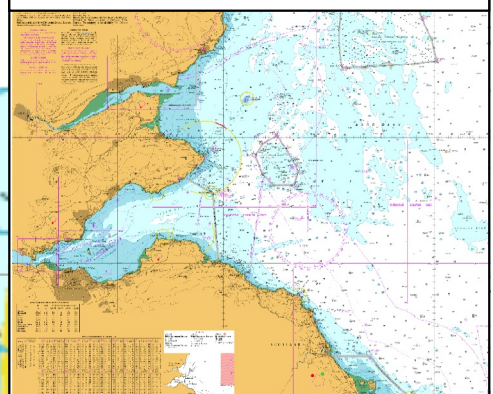


Figure Title: Pre Wind Farm Main Routes

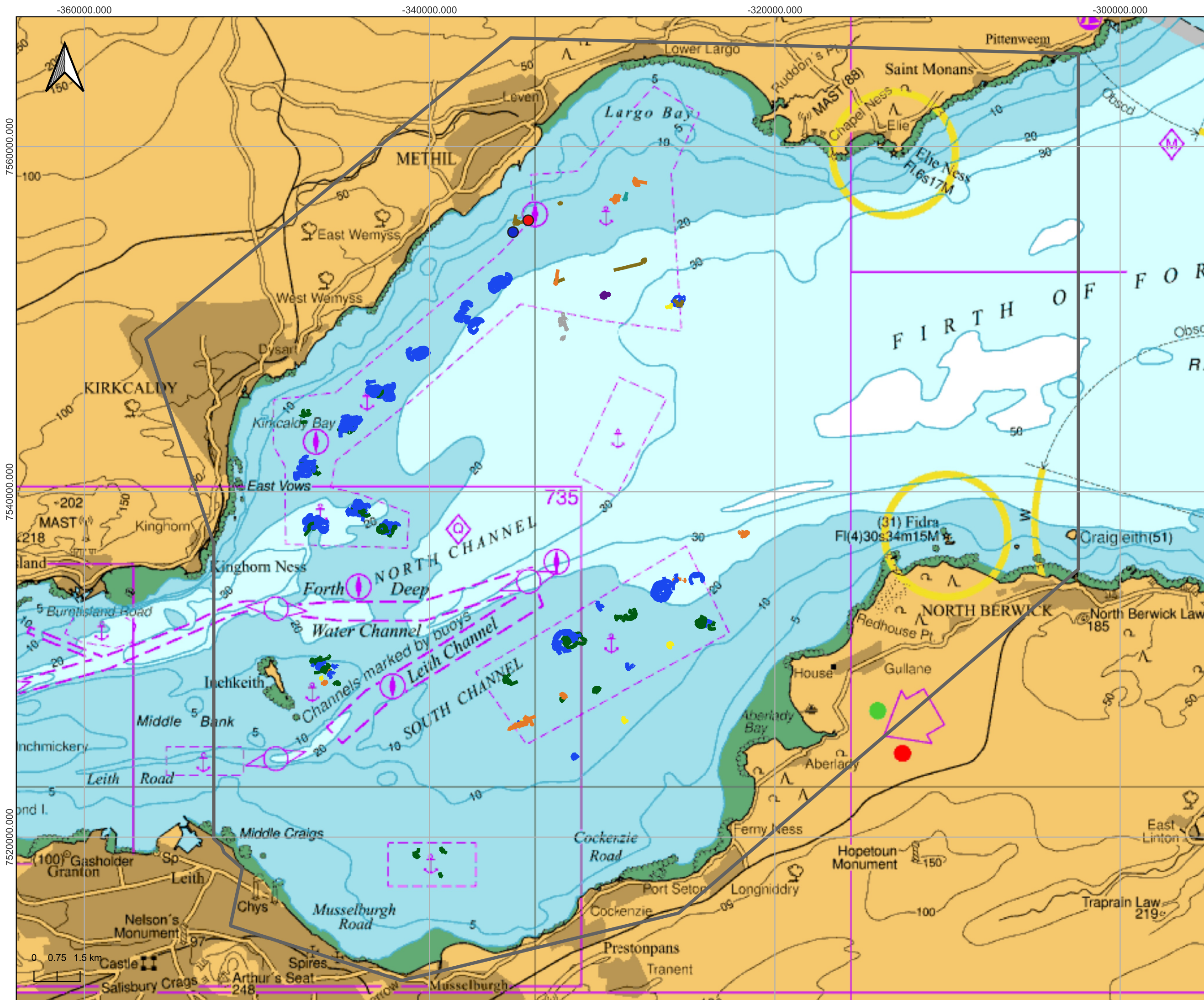
Project: Forthwind

Doc. Ref: FW-ANA-005

Scale: 1:150,000

Rev	Drawn	Approval	Date	Size
00	DS	JM	29/3/2022	A3

0 0.75 1.5 km



Legend

- WTG
- Met Mast
- Study Area

Vessel Type

- Unspec
- Military
- Tug
- Passenger
- Cargo
- Tanker
- Other
- Oil and Gas
- Wind Farm

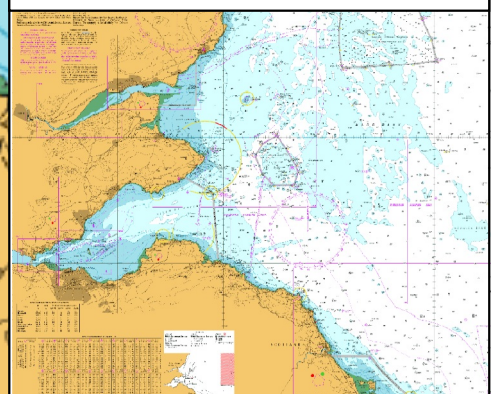


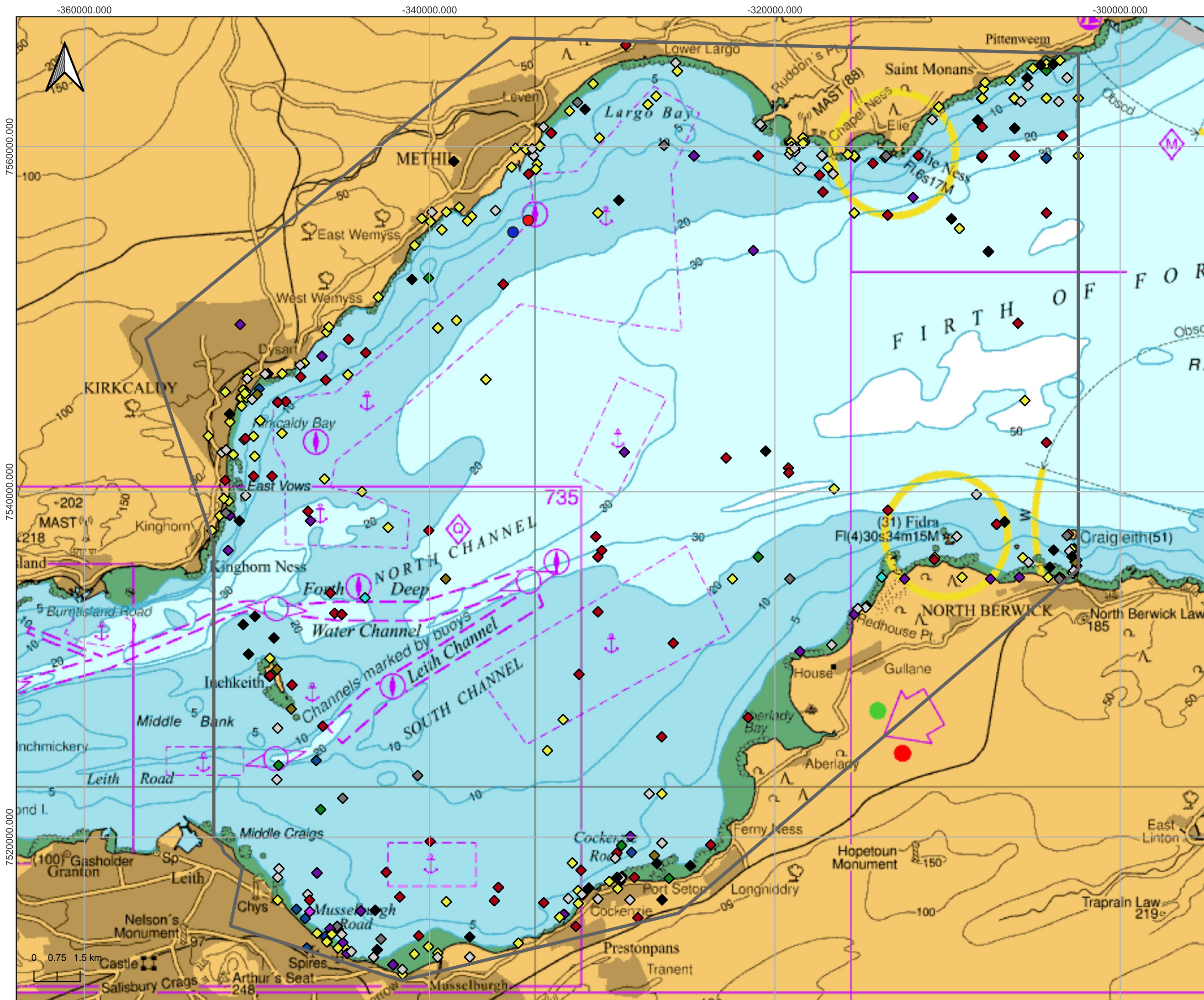
Figure Title: 28 Days AIS (Anchored)

Project: Forthwind

Doc. Ref: FW-ANA-004

Scale: 1:200,000

Rev	Drawn	Approval	Date	Size
00	DS	JM	29/3/2022	A3



- Legend**
- WTG
 - Met Mast
 - Study Area
- RNLI Incident Type
- Unspecified
 - Person in Danger
 - Machinery Failure
 - Sail Failure
 - Capsize
 - Collision
 - Flooding/Foundering
 - Grounding
 - Adverse Conditions
 - Snagging
 - Vessel may be in Trouble
 - Other

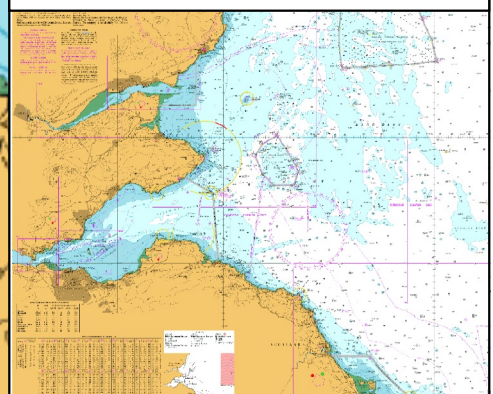


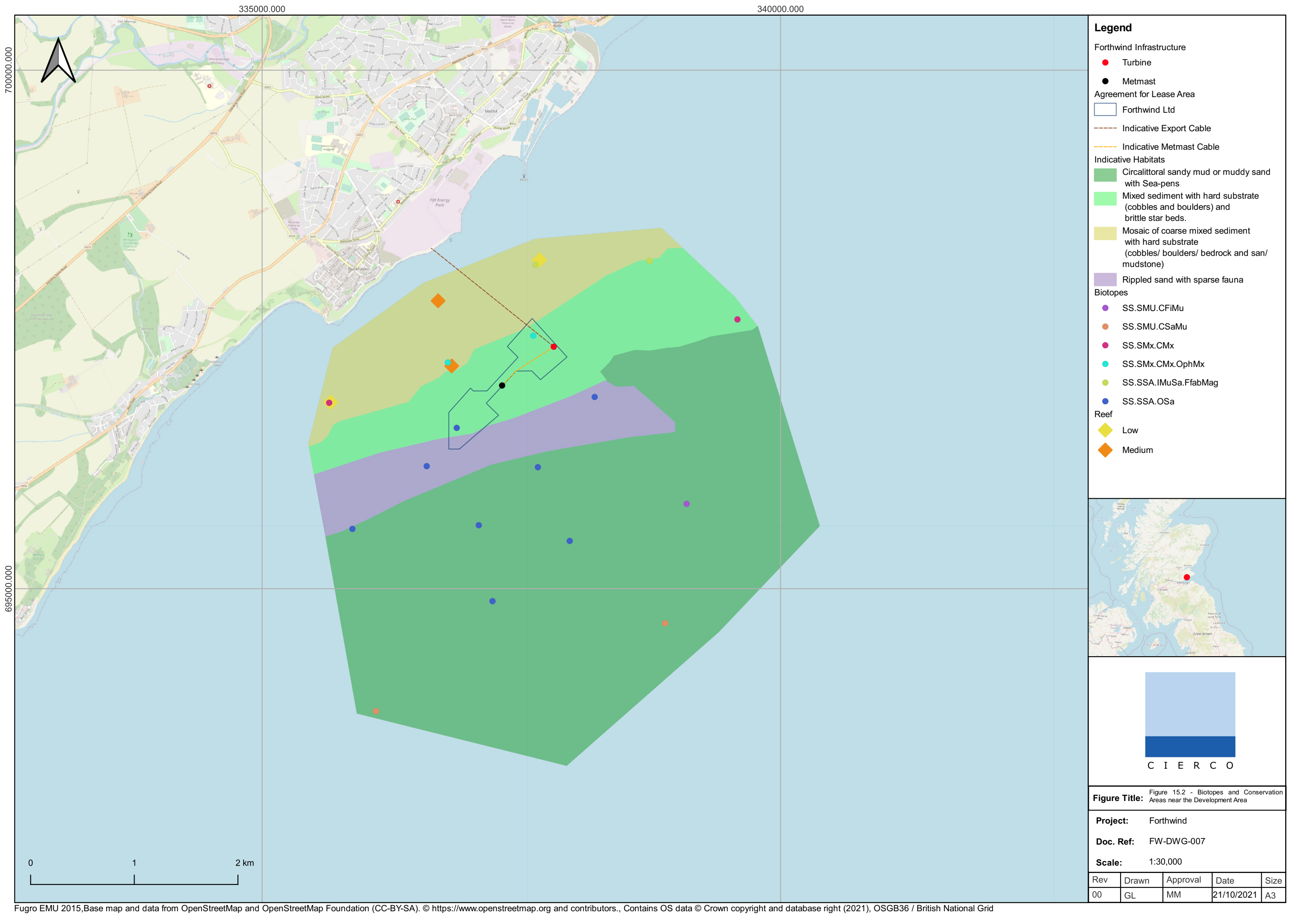
Figure Title: RNLI Data by Incident Type

Project: Forthwind

Doc. Ref: FW-ANA-006

Scale: 1:200,000

Rev	Drawn	Approval	Date	Size
00	DS	JM	29/3/2022	A3



- Legend**
- Forthwind Infrastructure**
- Turbine
 - Metmast
- Agreement for Lease Area**
- Forthwind Ltd
 - - - Indicative Export Cable
 - - - Indicative Metmast Cable
- Indicative Habitats**
- Circalittoral sandy mud or muddy sand with Sea-pens
 - Mixed sediment with hard substrate (cobbles and boulders) and brittle star beds.
 - Mosaic of coarse mixed sediment with hard substrate (cobbles/ boulders/ bedrock and san/ mudstone)
 - Rippled sand with sparse fauna
- Biotopes**
- SS.SMU.CFiMu
 - SS.SMU.CSaMu
 - SS.SMx.CMx
 - SS.SMx.CMx.OphMx
 - SS.SSA.IMuSa.FfabMag
 - SS.SSA.OSa
- Reef**
- ◆ Low
 - ◆ Medium



Figure Title: Figure 15.2 - Biotopes and Conservation Areas near the Development Area

Project: Forthwind
Doc. Ref: FW-DWG-007
Scale: 1:30,000

Rev	Drawn	Approval	Date	Size
00	GL	MM	21/10/2021	A3

