

# *ETERNAL GARDEN*

*Jieun Reiner*

*smoke the moon*

616 1/2 CANYON ROAD, SANTA FE, NM 87501

# smoke the moon

616 1/2 CANYON ROAD, SANTA FE, NM 87501



## *As The Deer*

Oil and acrylic on canvas

20 x 24 inches

2022

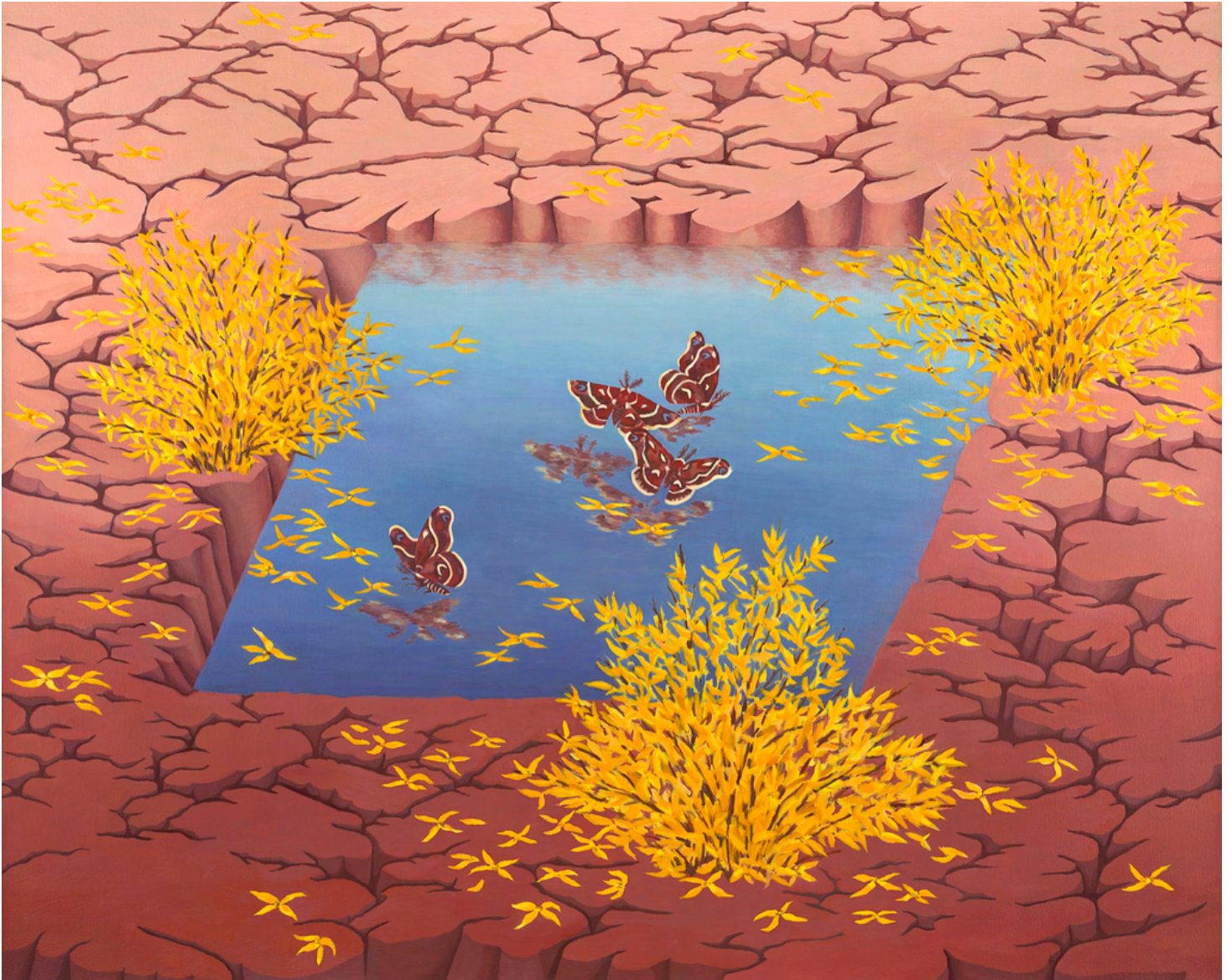
3200 usd

FOR INQUIRIES PLEASE EMAIL: [HI@SMOKETHEMOON.COM](mailto:HI@SMOKETHEMOON.COM)



# *smoke the moon*

616 1/2 CANYON ROAD, SANTA FE, NM 87501



## *Forsythia Dream*

Oil on canvas

42 x 52 inches

2022

8000 usd

**FOR INQUIRIES PLEASE EMAIL: [HI@SMOKETHEMOON.COM](mailto:HI@SMOKETHEMOON.COM)**



# *smoke the moon*

616 1/2 CANYON ROAD, SANTA FE, NM 87501



## *Red Flowers (Dawn)*

Oil on panel

16 x 12 inches

2022

1200 usd

FOR INQUIRIES PLEASE EMAIL: [HI@SMOKETHEMOON.COM](mailto:HI@SMOKETHEMOON.COM)



# *smoke the moon*

616 1/2 CANYON ROAD, SANTA FE, NM 87501



*Secret Message*

Oil on canvas

20 x 16 inches

2022

2000 usd

FOR INQUIRIES PLEASE EMAIL: [HI@SMOKETHEMOON.COM](mailto:HI@SMOKETHEMOON.COM)



# *smoke the moon*

616 1/2 CANYON ROAD, SANTA FE, NM 87501



## *Desire's Ascent*

Oil on canvas  
20 x 24 inches  
2022  
2800 usd

FOR INQUIRIES PLEASE EMAIL: [HI@SMOKETHEMOON.COM](mailto:HI@SMOKETHEMOON.COM)



# *smoke the moon*

616 1/2 CANYON ROAD, SANTA FE, NM 87501



*Ruby Gleam*

Oil on board

14 x 11 inches

2021

1200 usd

FOR INQUIRIES PLEASE EMAIL: [HI@SMOKETHEMOON.COM](mailto:HI@SMOKETHEMOON.COM)

# *smoke the moon*

616 1/2 CANYON ROAD, SANTA FE, NM 87501



## *Calligraphy for Spring*

Oil on panel

9 x 12 inches

2022

1200 usd

FOR INQUIRIES PLEASE EMAIL: [HI@SMOKETHEMOON.COM](mailto:HI@SMOKETHEMOON.COM)



# *smoke the moon*

616 1/2 CANYON ROAD, SANTA FE, NM 87501



## *Song About Eternity*

Oil and acrylic on canvas

42 x 52 inches

2022

8000 usd

**FOR INQUIRIES PLEASE EMAIL: [HI@SMOKETHEMOON.COM](mailto:HI@SMOKETHEMOON.COM)**



# *smoke the moon*

616 1/2 CANYON ROAD, SANTA FE, NM 87501



*Blue Parallel*

Oil on panel

16 x 12 inches

2022

1200 usd

FOR INQUIRIES PLEASE EMAIL: [HI@SMOKETHEMOON.COM](mailto:HI@SMOKETHEMOON.COM)



# *smoke the moon*

616 1/2 CANYON ROAD, SANTA FE, NM 87501



## *Omma*

Oil on canvas

26 x 36 inches

2022

INQUIRE

FOR INQUIRIES PLEASE EMAIL: [HI@SMOKETHEMOON.COM](mailto:HI@SMOKETHEMOON.COM)



# *smoke the moon*

616 1/2 CANYON ROAD, SANTA FE, NM 87501



## *Gates of Joy and Sorrow*

Oil and acrylic on canvas

32 x 20 inches

2022

3200 usd

**FOR INQUIRIES PLEASE EMAIL: [HI@SMOKETHEMOON.COM](mailto:HI@SMOKETHEMOON.COM)**



# smoke the moon

616 1/2 CANYON ROAD, SANTA FE, NM 87501



## *Honoured Guests*

Oil on canvas

42 x 52 inches

2022

8000 usd

FOR INQUIRIES PLEASE EMAIL: [HI@SMOKETHEMOON.COM](mailto:HI@SMOKETHEMOON.COM)



# *smoke the moon*

616 1/2 CANYON ROAD, SANTA FE, NM 87501



## *Small Ambiguous Landscape*

Oil on Panel

9 x 12 inches

2022

1200 usd

FOR INQUIRIES PLEASE EMAIL: [HI@SMOKETHEMOON.COM](mailto:HI@SMOKETHEMOON.COM)



# *smoke the moon*

616 1/2 CANYON ROAD, SANTA FE, NM 87501



## *Dream of Morning Glories*

Oil and acrylic on Canvas

20 x 24 inches

2022

4000 usd

**FOR INQUIRIES PLEASE EMAIL: [HI@SMOKETHEMOON.COM](mailto:HI@SMOKETHEMOON.COM)**



# *smoke the moon*

616 1/2 CANYON ROAD, SANTA FE, NM 87501



## *Red Flowers (Dusk)*

Oil and acrylic on panel

16 x 12 inches

2022

1400 usd

FOR INQUIRIES PLEASE EMAIL: [HI@SMOKETHEMOON.COM](mailto:HI@SMOKETHEMOON.COM)



# *smoke the moon*

616 1/2 CANYON ROAD, SANTA FE, NM 87501



## *Caligraphy for Summer 1- 10*

Acrylic on muslin

8 x 10 inches

2022

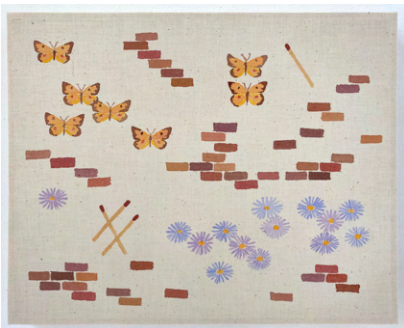
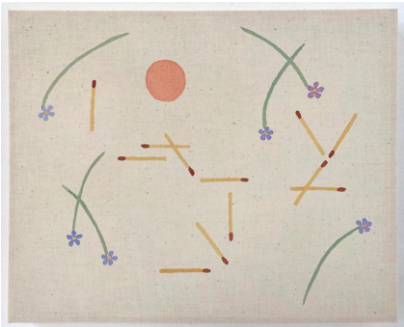
500 usd each

**FOR INQUIRIES PLEASE EMAIL: [HI@SMOKETHEMOON.COM](mailto:HI@SMOKETHEMOON.COM)**



# *smoke the moon*

616 1/2 CANYON ROAD, SANTA FE, NM 87501

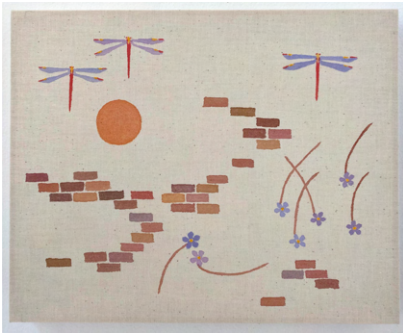
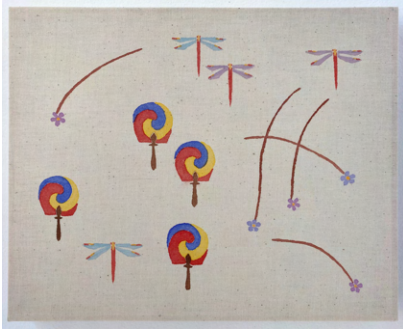


FOR INQUIRIES PLEASE EMAIL: [HI@SMOKETHEMOON.COM](mailto:HI@SMOKETHEMOON.COM)



# *smoke the moon*

616 1/2 CANYON ROAD, SANTA FE, NM 87501



FOR INQUIRIES PLEASE EMAIL: [HI@SMOKETHEMOON.COM](mailto:HI@SMOKETHEMOON.COM)



