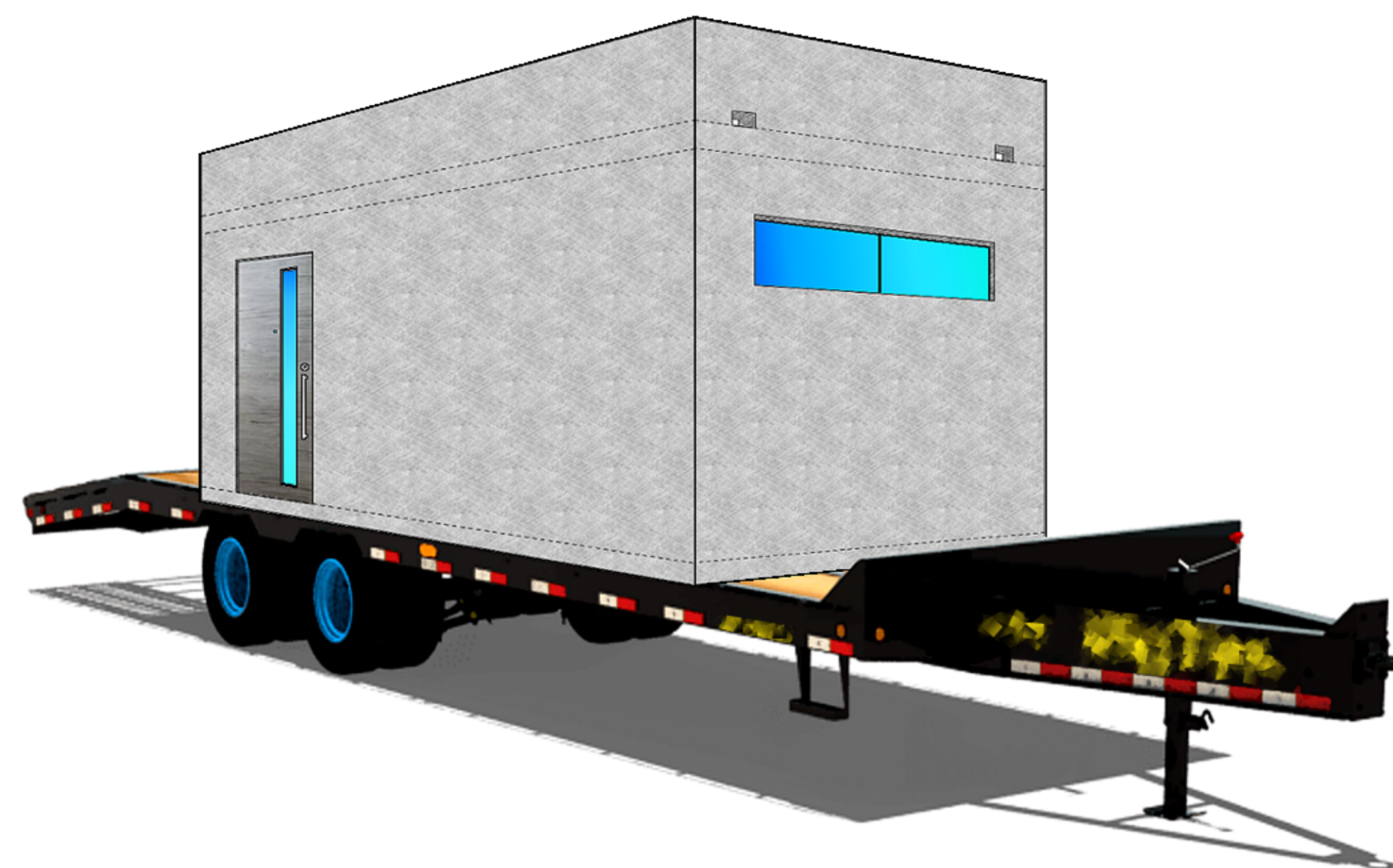
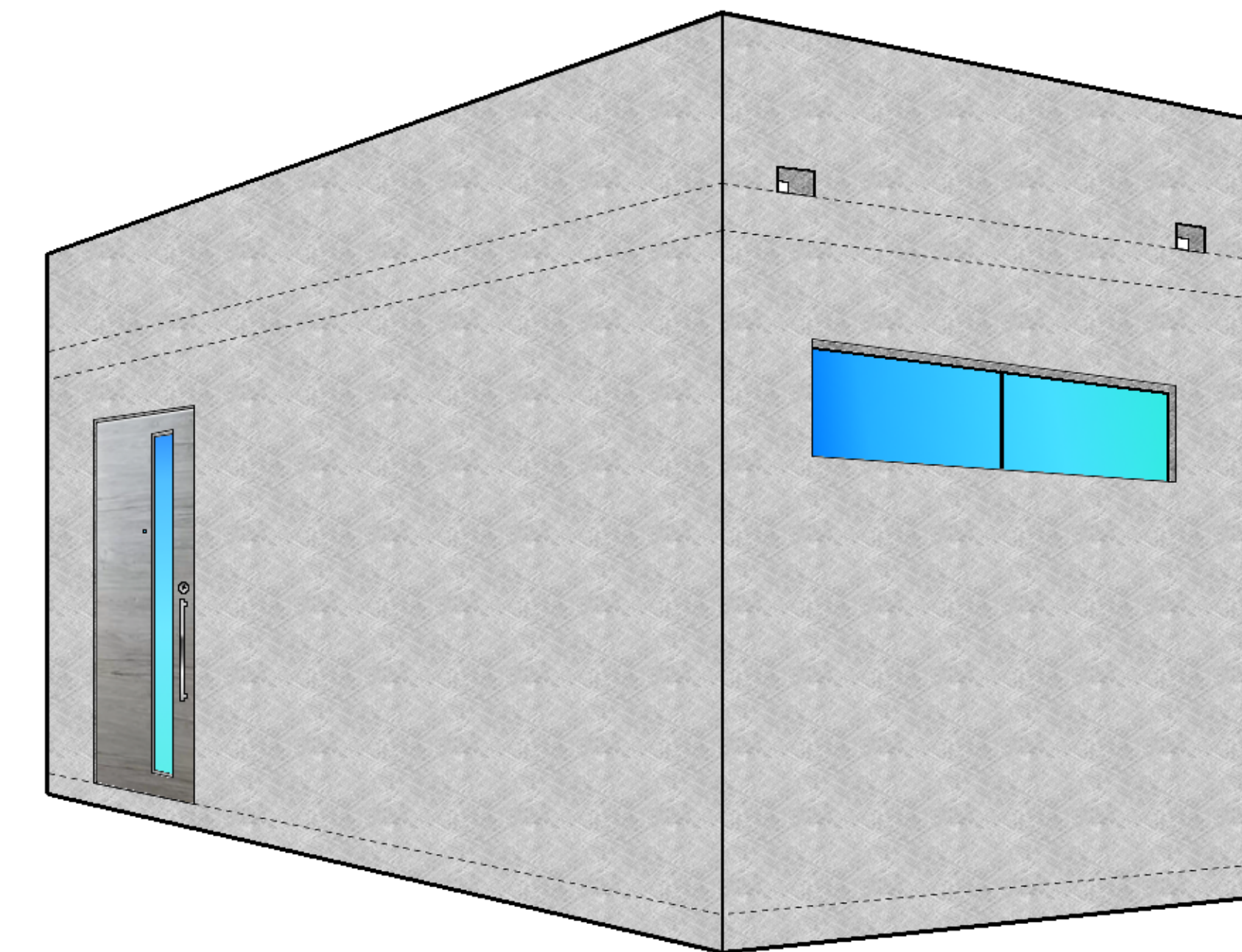
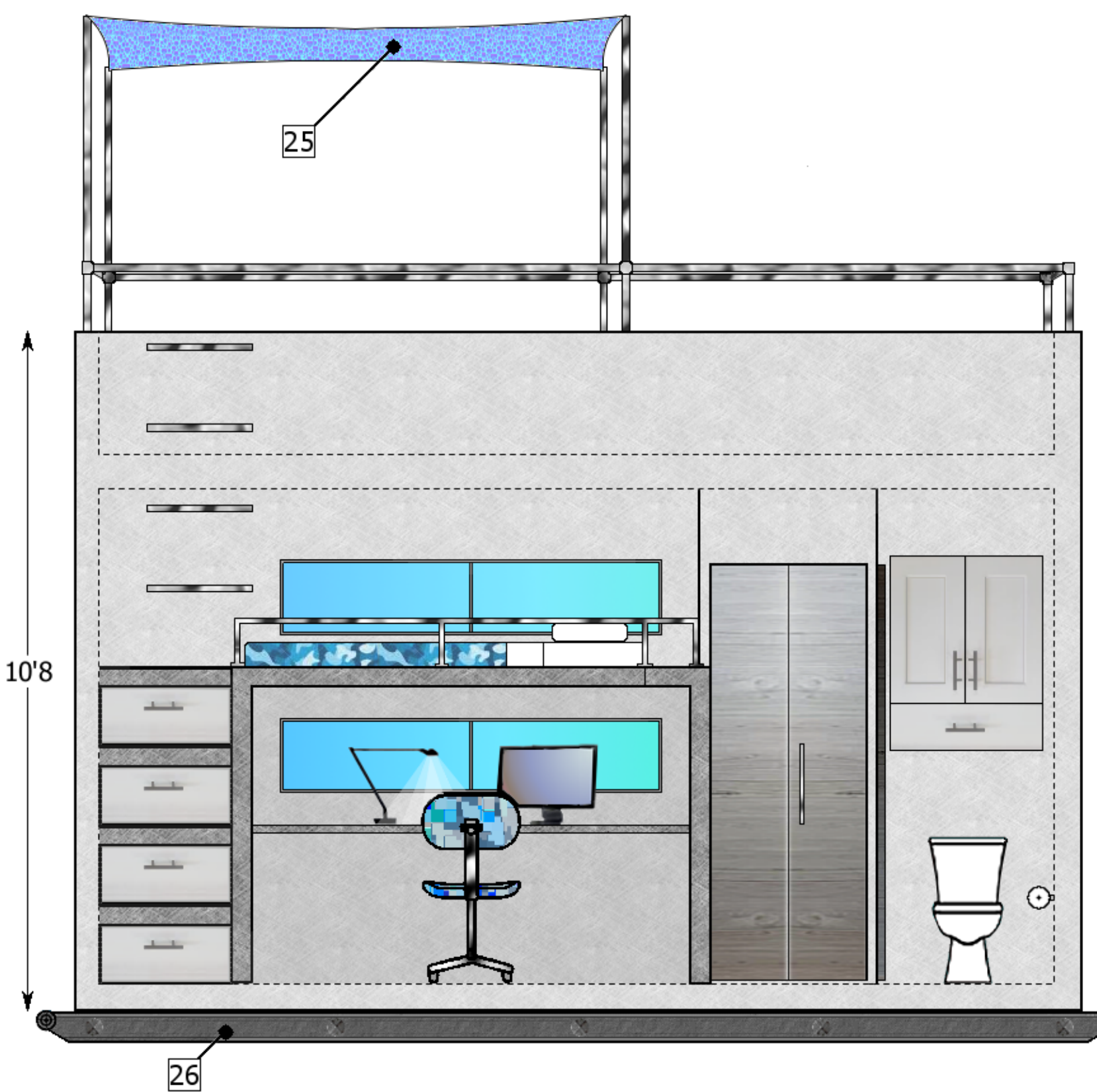
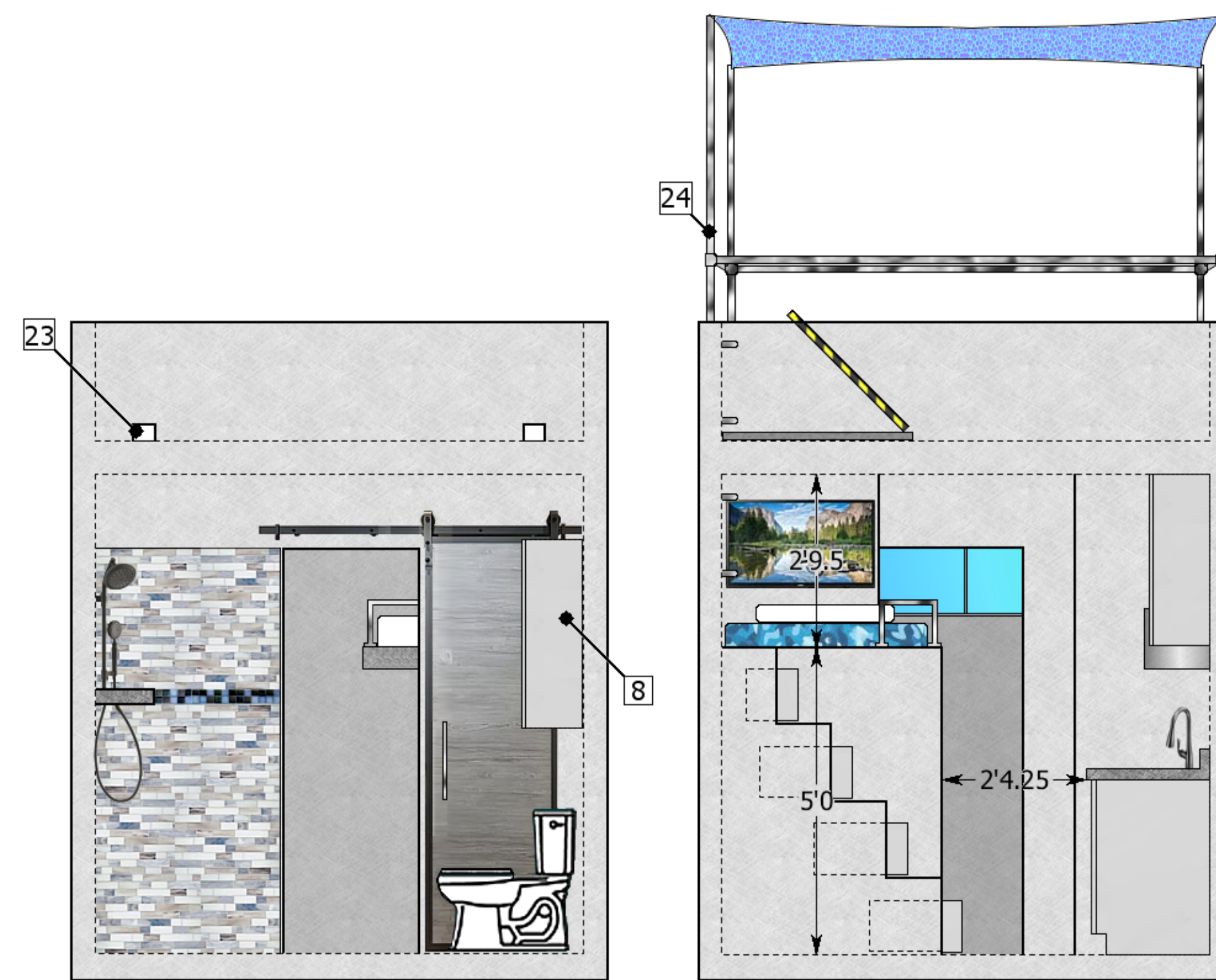
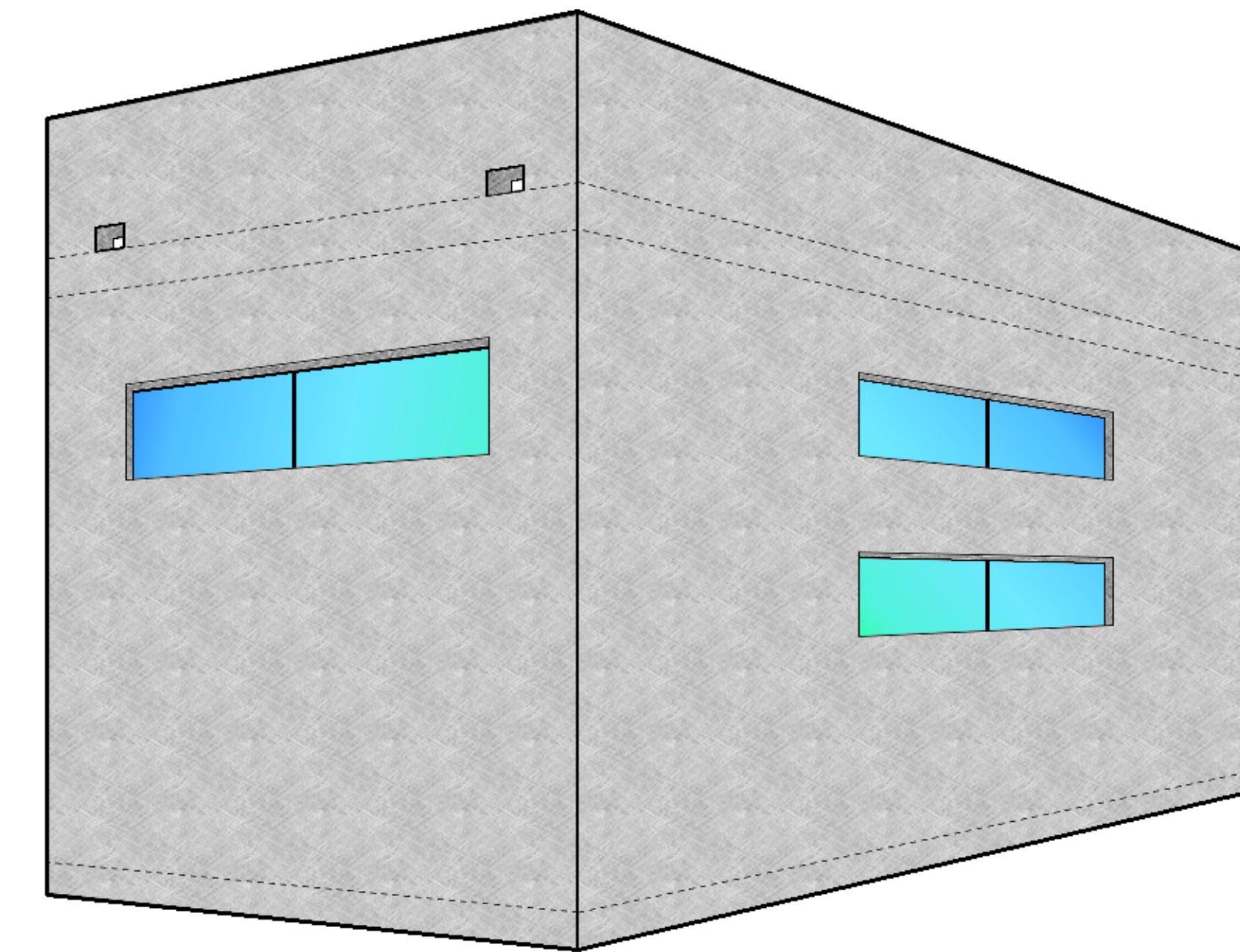
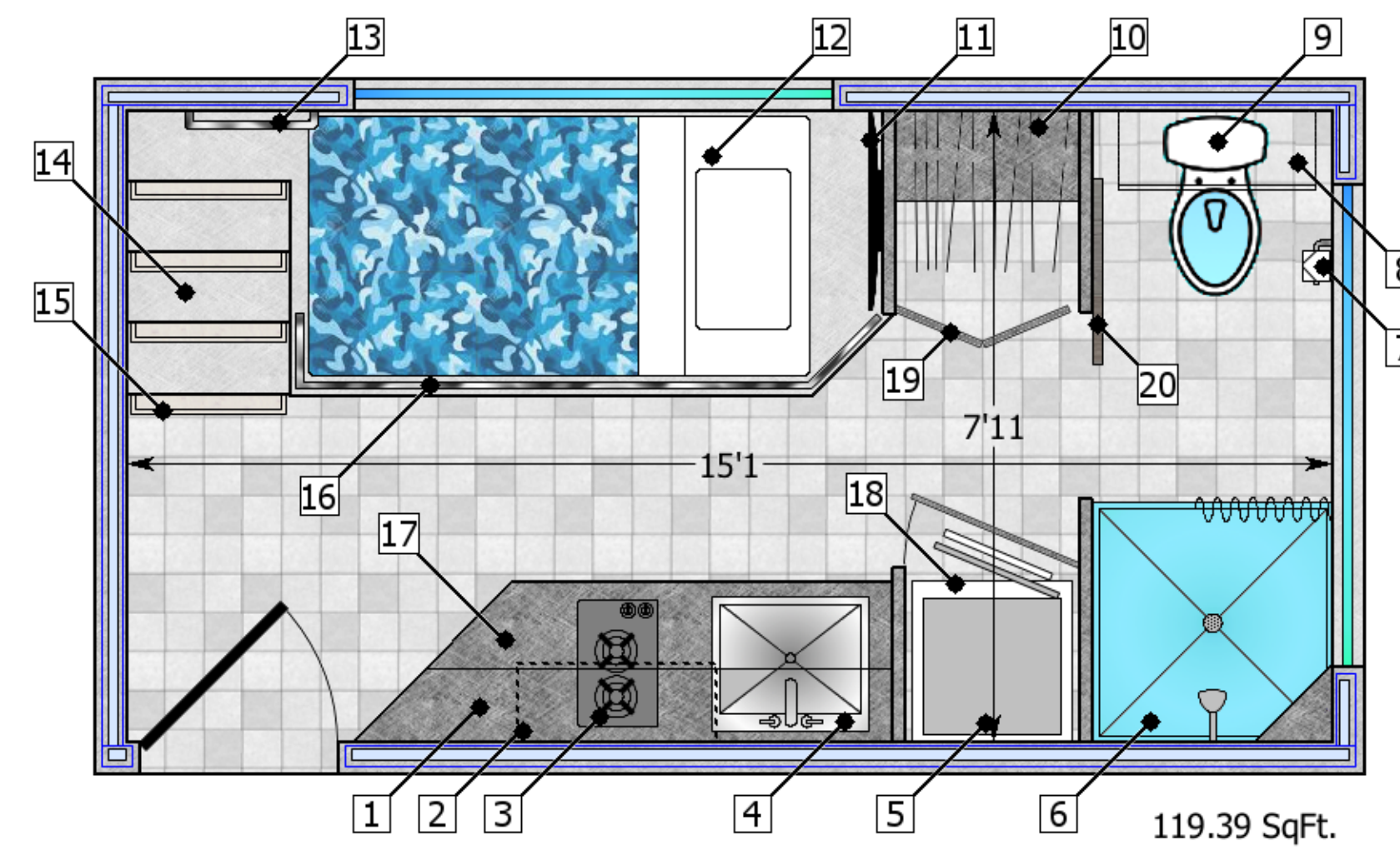
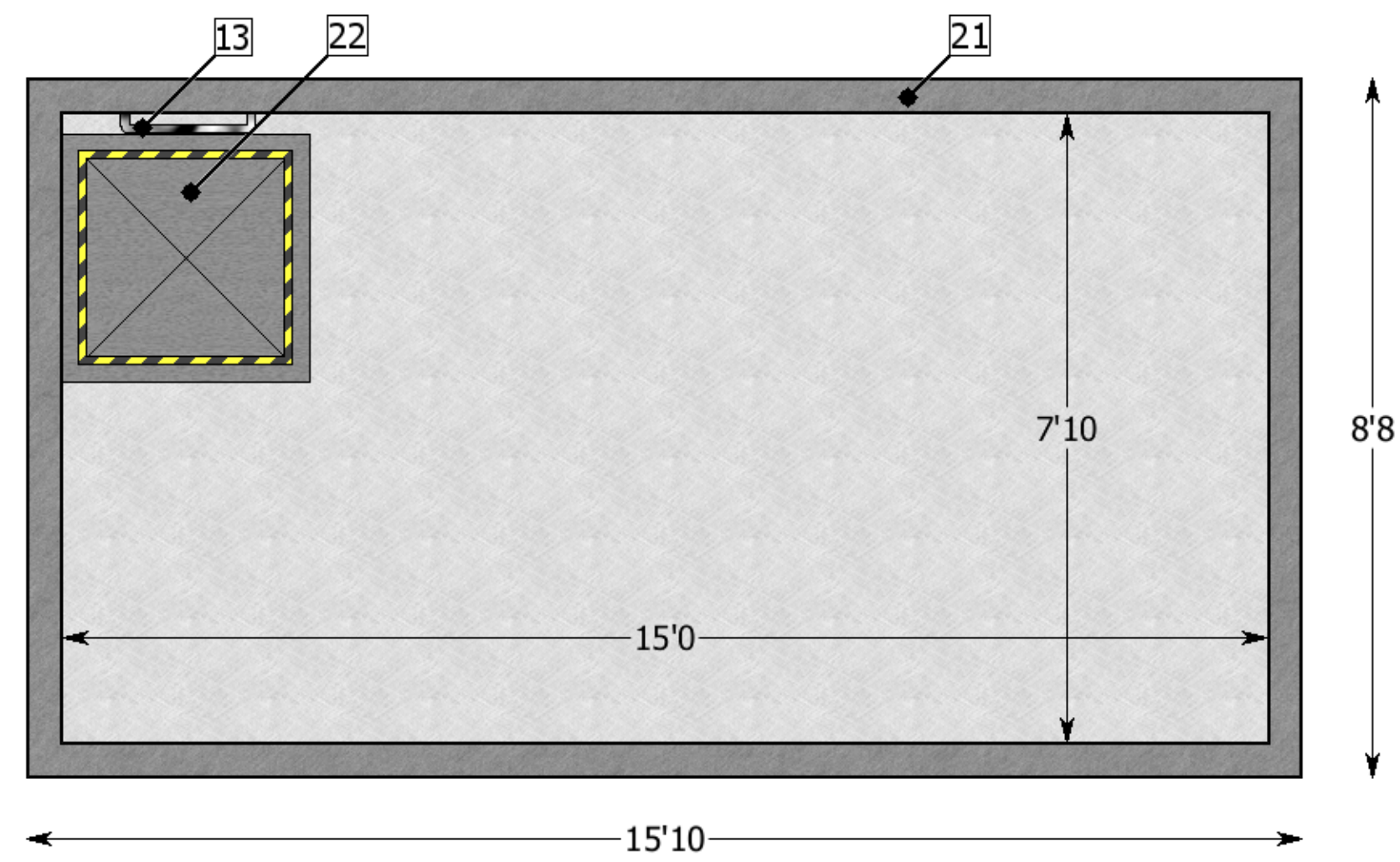


# BP2-02 CASTLETTE



- |  |   |
|--|---|
| <ul style="list-style-type: none"> <li>1 CEILING HIGH UPPER KITCHEN CABINETS</li> <li>2 GE 30" Wide 1.7 CuFt. OVER the RANGE MICROWAVE Model: JVM6175DKBB</li> <li>3 SUMMIT 12" Wide 120V BUILT-IN ELECTRIC COOKTOP Model: CR2100</li> <li>4 ELKAY DAYTON 25" DROP-IN SINGLE BASIN SINK Model: D125213</li> <li>5 GE 3.1 CuFt. DOUBLE-DOOR MINI FRIDGE Model: GDE03GLKLB</li> <li>6 36" X 36" SHOWER PAN &amp; ENCLOSURE</li> <li>7 TOILET PAPER DISPENSER</li> <li>8 OVER-the-TOILET STORAGE CABINET</li> <li>9 STANDARD SIZED TOILET</li> <li>10 27.5" X 30.5" CLOTHING CLOSET</li> <li>11 32" LED FLAT SCREEN TV with WALL MOUNT</li> <li>12 OVER-the-TOILET STORAGE CABINET</li> <li>13 FIXED STEEL ROOFTOP ACCESS LADDER</li> </ul> | <ul style="list-style-type: none"> <li>14 SCIPs BUILT-IN STEPS for SLEEPING LOFT &amp; ROOFTOP ACCESS</li> <li>15 BUILT-IN STORAGE DRAWERS</li> <li>16 SAFETY RAIL for SLEEPING LOFT</li> <li>17 POLISHED CONCRETE COUNTER TOPS</li> <li>18 SUMMIT 2.0 CuFt. WASHER DRYER COMBO Model: SPWD2201SS</li> <li>19 27.5" - W BI-FOLDING CLOSET DOOR</li> <li>20 28"-W x 68"-H BARN STYLE DOOR</li> <li>21 PARAPET with ALUMINUM FLASHING CAP</li> <li>22 30" ROOF HATCH</li> <li>23 PARAPET ROOF DRAIN SCUPPER</li> <li>24 REMOVABLE SAFETY RAIL and TENSION SAIL POST SYSTEM</li> <li>25 PVILION MILITARY SOLAR STRUCTURES - TENSION SOLAR SHADE<br/><a href="http://www.pvillion.com/#/military-solar-structure/">http://www.pvillion.com/#/military-solar-structure/</a></li> <li>26 REMOVABLE, I-BEAM CONSTRUCTED, SKID BASE for TRANSPORTING</li> </ul> |
|--|---|