



Site Name: NV – DURANGO

**5945 N. Durango Drive – APN# 125-29-704-005
Las Vegas, NV 89149**

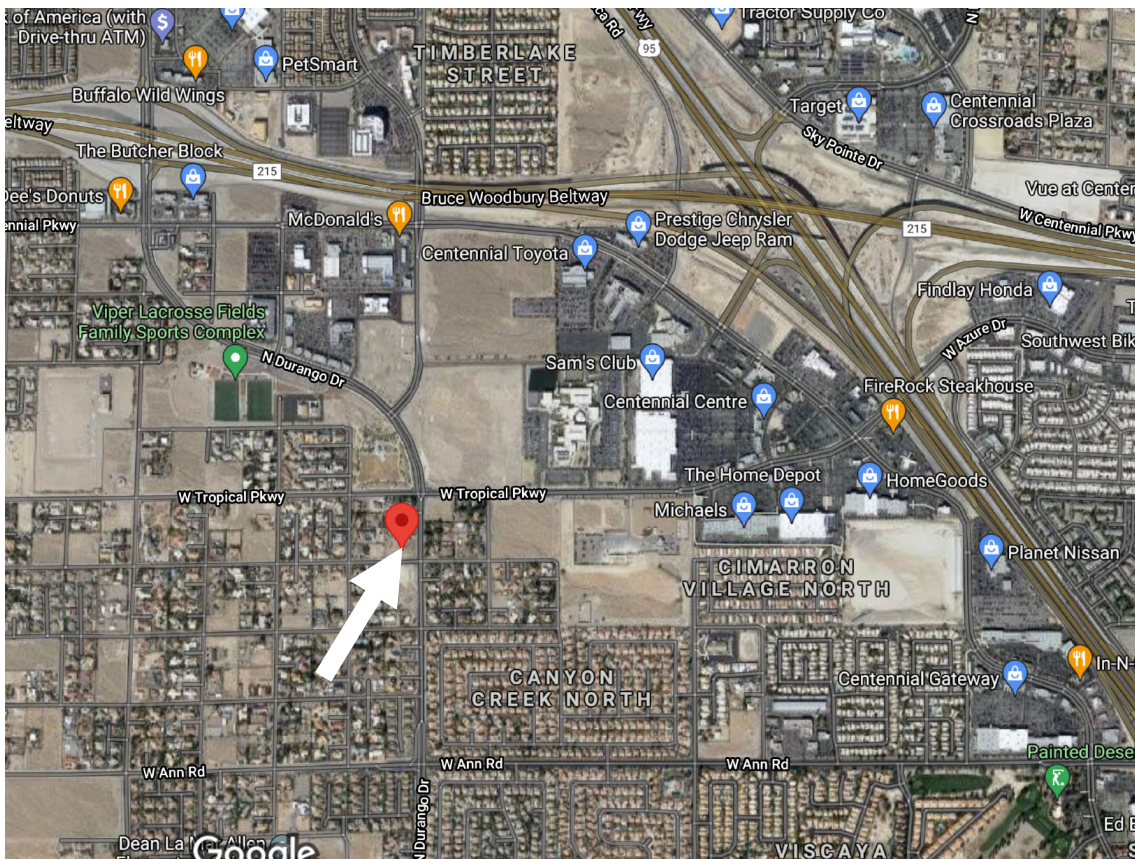
**Latitude: 36° 16' 07.46" N
36.268739**

**Longitude: 115° 16' 45.87" W
-115.279408**

AMSL: 2,552'

Type: 80' Mono-Eucalyptus

The future 80' Mono-Eucalyptus facility will be located in the northwest Las Vegas valley southwest of the W. Tropical Parkway & Durango intersection, which will provide much needed coverage & capacity to a high density of residential homes and commercial shopping.



Managed & Marketed by:

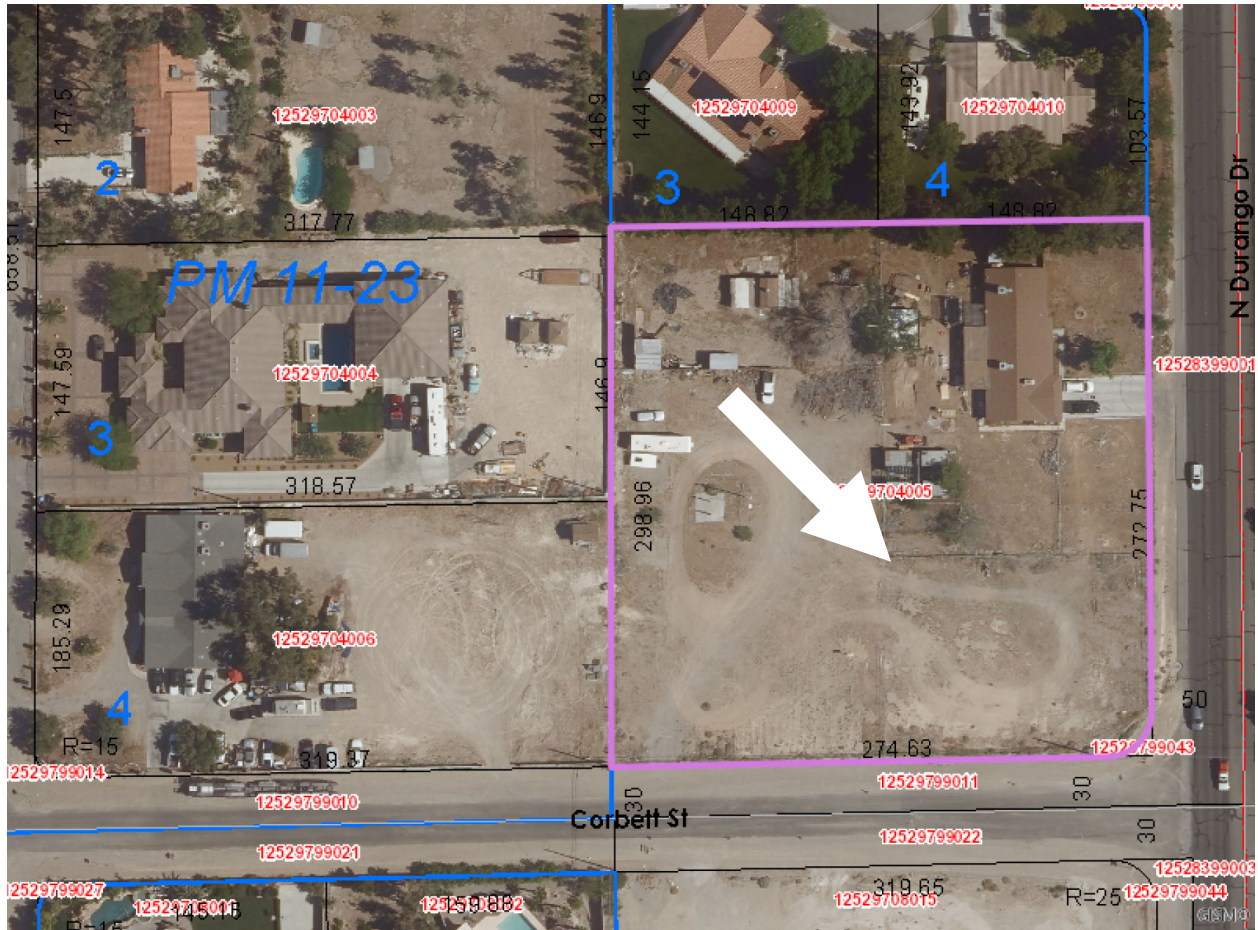


For More Information, Contact:

Todd Fuson Todd@IntelliSitesllc.com or Debbie DePompei Debbie@IntelliSitesllc.com

(702) 430-8369

Aerial View of Site Location



Directions:

FROM: McCarran International Airport - 5757 Wayne Newton Blvd, Las Vegas, NV

Get on I-15 N from McCarran Airport Connector/S University Center Dr and E Tropicana Ave

Continue on I-15 N. – 16.3 miles

Take US-95 N to W Ann Rd (Exit 90B) – 9.5 miles

Continue on W Ann Rd. to N. Durango Dr. – 1.5 miles

Turn right onto N. Durango Dr. & continue for about a ½ mile and turn left onto Corbett St. Site will be on your immediate right.

5495 N. Durango Drive
Las Vegas, NV 89149