



Site Name: NV-Twain & Eastern
2456 E. Twain Ave. – Las Vegas, NV 89121
APN #: 162-13-203-002

Latitude: 36° 07' 21.4" N / 36.122611 **Longitude:** 115° 07' 03.7" E / -115.117694

AMSL: 2,582' **Type:** 80' Monopalm **Status:** Leased; Previously Zoned

IntelliSites holds the rights to the ground lease for this future 80' Monopalm that is located in the southeast Las Vegas valley at the northeast corner of Twain & Eastern. The facility could accommodate an additional flush mount collocation.



Managed & Marketed by:

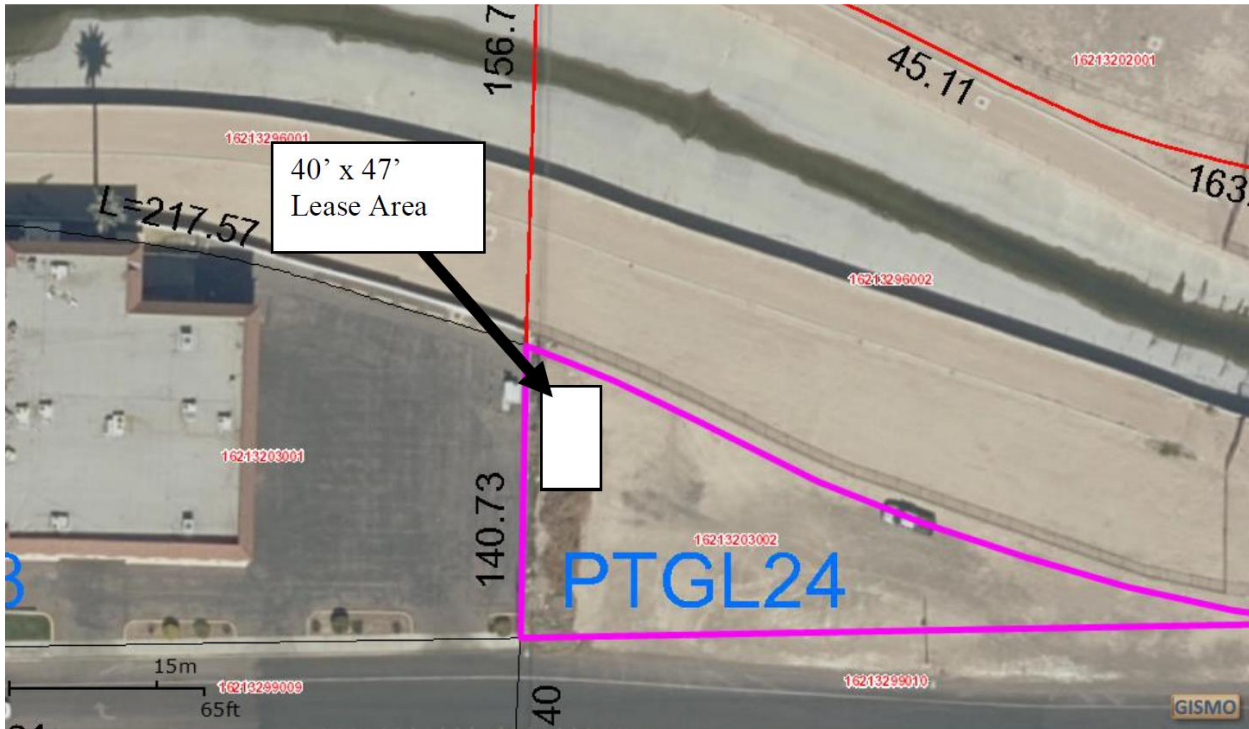


For More Information, Contact:

Todd Fuson Todd@IntelliSitesllc.com or **Debbie DePompei** Debbie@IntelliSitesllc.com

(702) 430-8369

SITE LOCATION / DIRECTIONS:



Directions (From McCarran International Airport):

Head northwest on E. Russell Rd. toward Landing Strip Ave. Turn right onto Spencer St. Turn right on Rawhide St. Turn left on S. Eastern Ave. Turn right onto E. Twain Ave. The destination will be on the left.