



Site Name: NV – Volunteer

**Volunteer Blvd. – APN# 191-10-712-001
Henderson, NV 89044**

**Latitude: 35° 57' 38.47" N
35.960686**

**Longitude: 115° 8' 28.99" W
-115.141386**

AMSL: 2,582'

Type: 80' Eucalyptus Tree

The future 80' Eucalyptus facility will be located at the northwest corner of Volunteer Blvd. & Via Inspirada. The site is ideally situated to provide coverage & capacity to the new Raiders practice facility to the north and a high density of residential homes to the south within the Inspirada master planned community.



Managed & Marketed by:

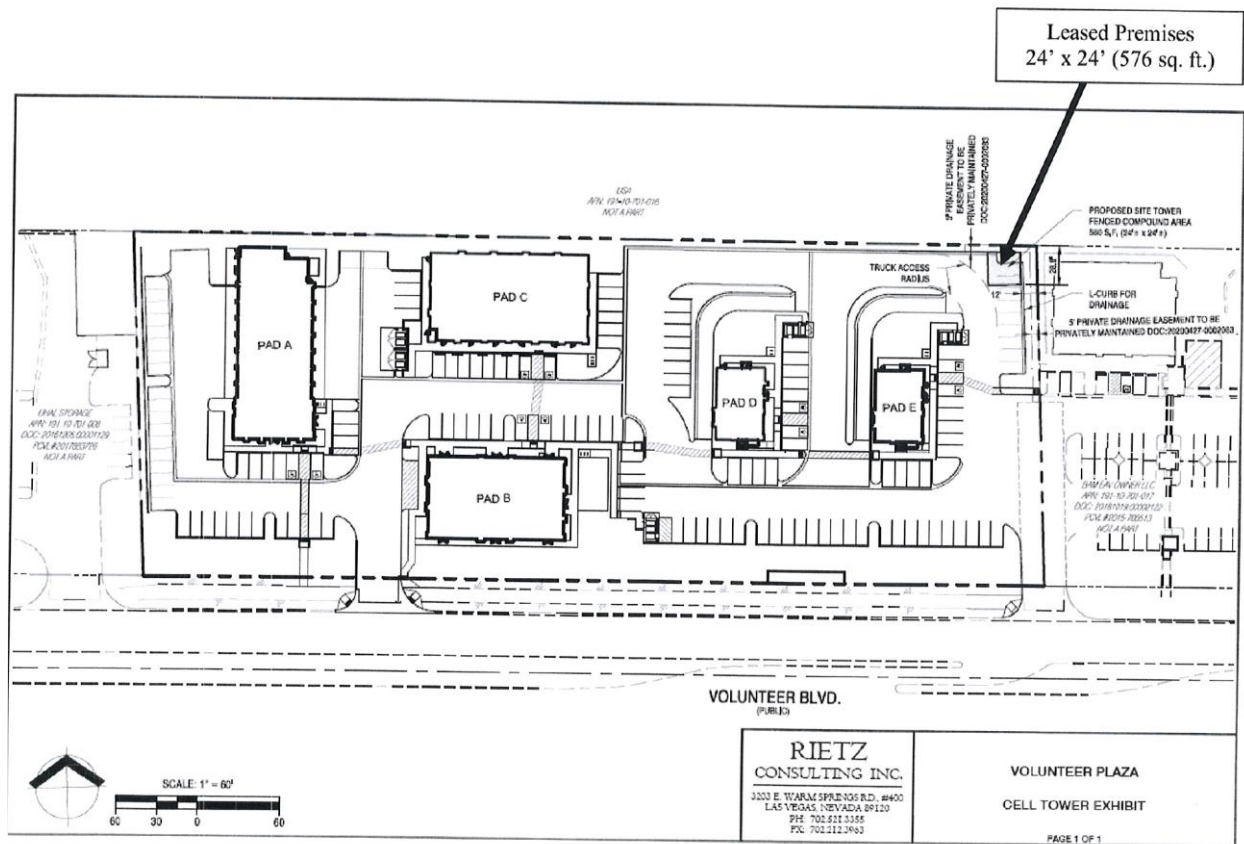


For More Information, Contact:

Todd Fuson Todd@IntelliSitesllc.com or Debbie DePompei Debbie@IntelliSitesllc.com

(702) 430-8369

View of Site Location



Directions:

FROM: McCarran International Airport – 5757 Wayne Newton Blvd, Las Vegas, NV

Head south on McCarran Airport Connector/Paradise Rd. toward Wayne Newton Blvd. Use the 2nd from the left lane to stay on McCarran Airport Connector/Paradise Rd. Keep right to stay on McCarran Airport Connector/Paradise Rd.

Use the middle 2 lanes to keep right at the fork, follow signs for I-215 W/Las Vegas and merge onto I-215 W.

Take EXIT 12B to merge onto I-15 S. Continue for 5.6 miles.

Take EXIT 29 for W. Starr Ave. Use the left 2 lanes to turn left onto W. Starr Ave. Continue onto Raiders Way. For approx. 1.7 miles.

Turn right onto Volunteer Blvd. Site will be on you right.