

New River Sampling Program

Imperial County Public Health
Department

Environmental Health Division

- Jeff Lamoure

Deputy Director, Environmental Health Division
JeffLamoure@co.imperial.ca.us

- Trina Hamby

Environmental Health Consumer Protection Manager
TrinaHamby@co.imperial.ca.us

- Felipe Vega

Environmental Health Compliance Specialist III – Salton Sea
and Imperial County Waterways
FelipeVega@co.imperial.ca.us



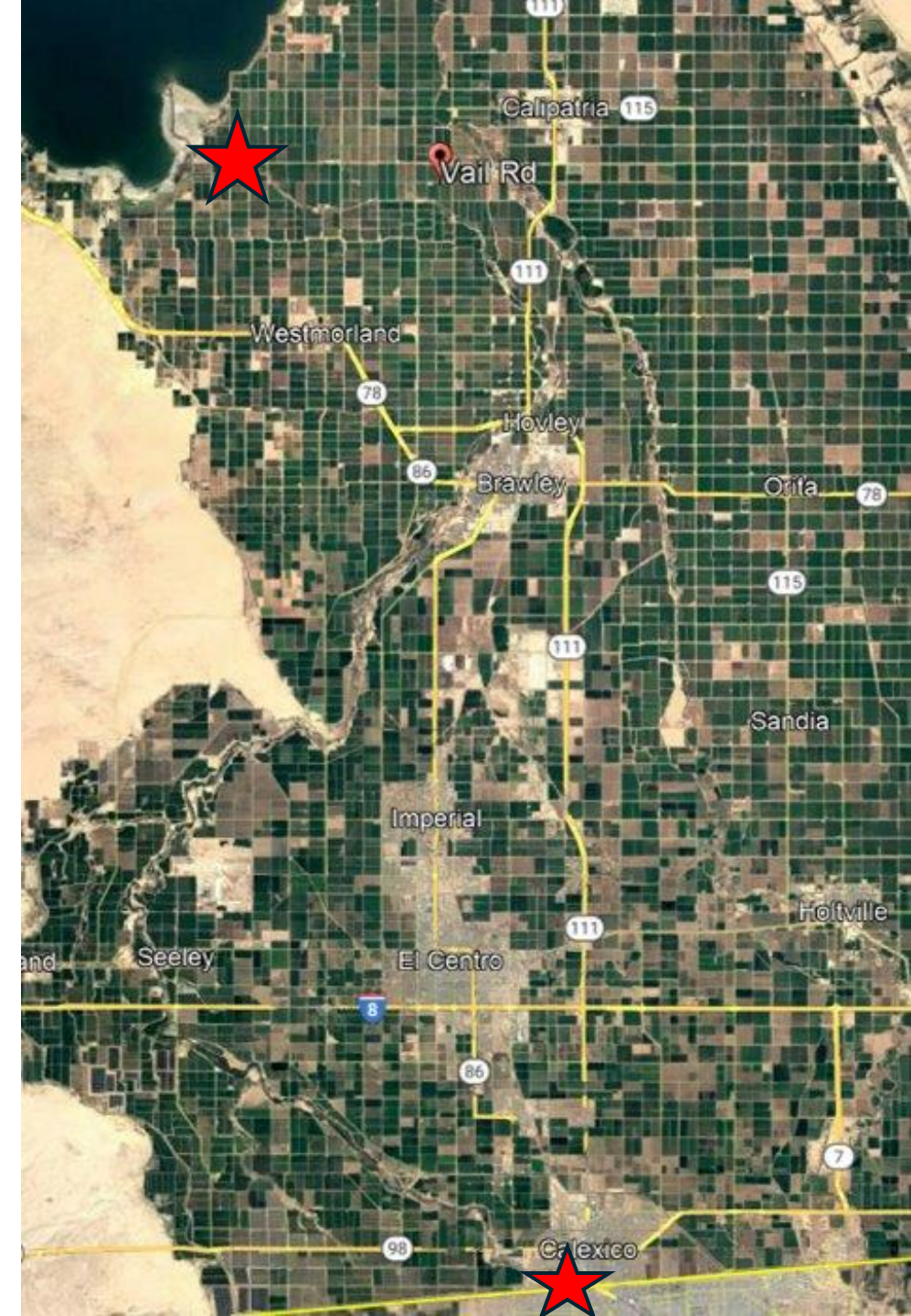
New River Overview

- The New River originates in Mexicali, Mexico and flows north into the United States and ends at the Salton Sea.
 - Significant tributary to the Salton Sea
- Minute 264 – Agreement established in 1980 by the International Boundary and Water Commission (IBWC) with interim standards for the New River water quality.
 - Established interim standard for Fecal Coliform (what we test)
 - Has not been revised since 1980 (overdue)



Sampling Program

- Environmental Health collects water samples from New River twice a month from two locations, Anza Rd. (International Boundary) in Calexico and Vail Rd. in Westmorland
- Sampling is prioritized after rain events and during active transboundary flows
- Sampling International Boundary since 2020, additional sampling location, Vail, added in 2022
- Test for:
 - Bacteria: Total and Fecal Coliform
 - pH
 - Total Suspended Solids
 - Metals
 - Semi volatile Organic Compounds (Pesticides/Herbicides)



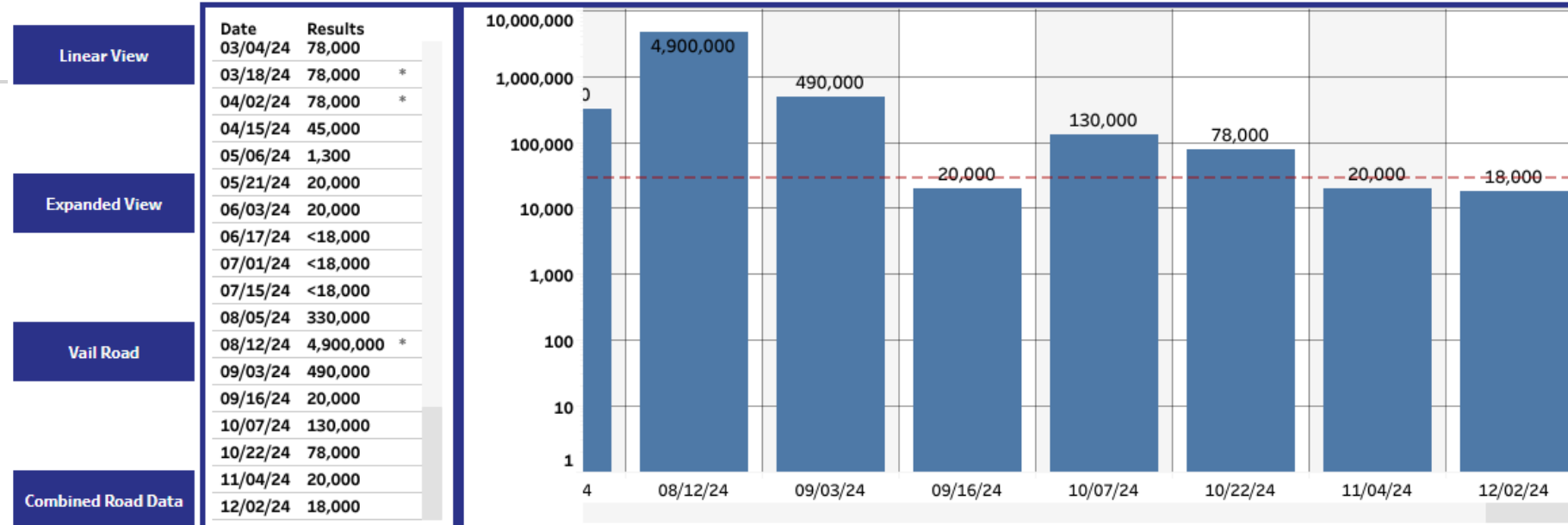
Findings



New River - Anza Road Bacteriological Monitoring



Fecal Coliform - Anza Road (Logarithmic View)



- Bacteria levels decrease downstream (Anza vs Vail) – still not to safe levels
- No significant detection of pesticides/herbicides, extreme pH range, or metals
- Data posted on website dashboard
- See what feeds the Sea at www.icphd.org/new-river-dashboard
 - All Total and Fecal Coliform results
 - View single sampling location or a combined overlay
 - Filter by year
 - *Best viewed on Desktop Computer

Ongoing New River Issues

- Polluted upon entering the US at the International Boundary
- Transboundary sewage spills due to rain events or maintenance on sewer infrastructure.
- Agricultural runoff from Mexico and Imperial Valley
- Illegal dumping



Trash accumulation in New River tributary drainage canal. Rural outskirts of Mexicali, Mexico. 2025.



Trash accumulation in New River tributary drainage canal. Rural outskirts of Mexicali, Mexico. 2025.

Moving Forward



New River Improvement Project – Trash collector at International Boundary in Calexico completed, nearly operational



Advocating at IBWC Binational Technical Committee meeting

We tour Mexicali sewer system infrastructure improvement progress

We have the opportunity to suggest actions to minimize risk of spills into New River



Data sharing/collaboration with state and federal agencies



Public information access to results

We continue to publish bacteria sampling results available through new interactive data dashboard

Additional analyses data upload is in process



Thank You

ICPHD.org

ICPHD-WaterDesk@co.imperial.ca.us

www.icphd.org/new-river-dashboard