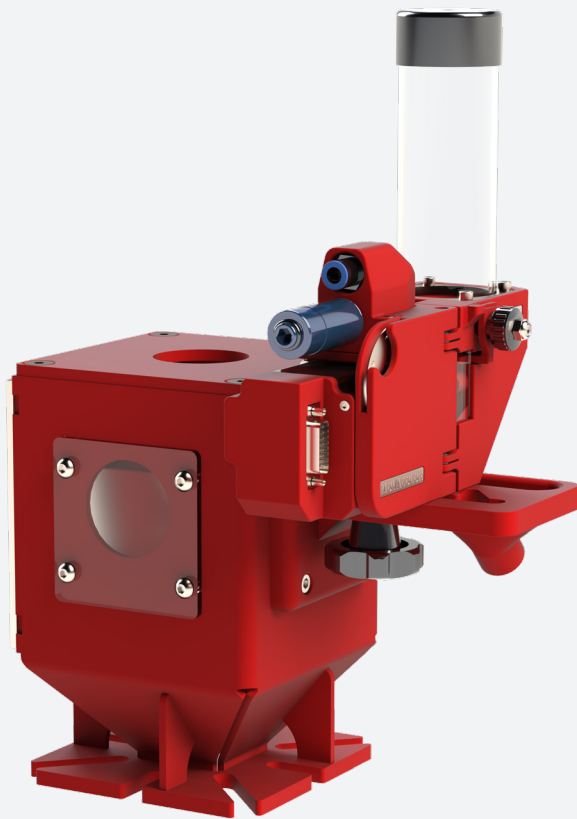


MDS 200 Nexus

Ultra-precise and compact optometric dosing solution
capable of accurately dosing pellet per pellet.



— Specifications



Capable of accurately dosing per pellet



Ideal for low dosing capacities



Produce more consistently



Industry 4.0 compatible

Capacity

0.15 kg/h (up to 5 pellets per second)

Accuracy

Up to 0,01% Pellet per pellet

Process

Injection molding
Extrusion
3D-printing

Configuration

Configurable with a 0,2L transparent or 1,2L stainless steel hopper
Hopper loader
Customizable production machine connection
Air on Deck option
Part of the Movacolor modular dosing concept

Communication

Modbus TCP/IP, Profibus, Profinet, OPC/UA
Integrated hopper loader control
Alarm, Warning, Run
2x0-10 VDC or 4-20 mA
Potential free, 24VDC or extruder tacho (0-30VDC)

Operation

8" full colour touch screen controller
Internal memory for static changes
Logging software for dynamic changes
Store up to 1000 recipes
Multilingual

Power

Supply: 95-250 VAC, 50/60 Hz. by integrated automatic voltage selector
2-5 Bar compressed air
Consumption: 150 Watt maximum
0,33 l/h maximum in continuous operation

Materials

Masterbatch
Virgin

Design

Modular
3D printed
Compact
With easy-drain system
Engineered and assembled in The Netherlands



Scan the QR code to find out more!