

ICRSME XVI Consultation will be held March 15-18, 2023 at the Convention Center of the Ciudad del Saber (CdS/City of Knowledge), which is located just 35 minutes from Tocumen International Airport (PTY) in Panamá City, Panamá. CdS sits adjacent to the Panamá Canal on what was previously the United States Military Base Fort Clayton. According to the [CdS website](#), the 120 hectare campus is a place where:

entrepreneurs, scientists, thinkers, artists, community leaders, as well as experts from the government, NGOs, and international organizations work together to develop initiatives that trigger social change.

We are excited to host ICRSME XVI at this unique location!



Accommodations:

Note: *If you are thinking of attending the Consultation, reserve your room TODAY. The best rate is on a first-come-first-served basis. Free cancellation is available.*

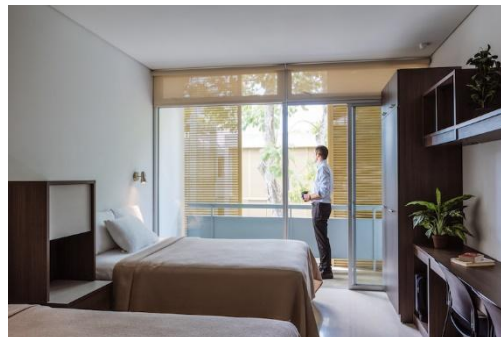
There are **two options** for staying within the CdS:

- The Holiday Inn Panama Canal (left photo below) is situated adjacent to the Canal and offers panoramic views of passing ships. It also provides complimentary internet access, a 24-hour fitness center, an outdoor pool, and complimentary shuttle service to Albrook Mall, Panama's largest shopping center with over 500 shops and restaurants. The Holiday Inn is a short 10-minute walk to the Convention Center and rooms are available for as little as \$67.00 per night!

Make your reservation early using this [link](#)!

- Alternatively, you can also stay at the CdS dormitories (right photo below). These hotel quality dorms are across the street from the Convention Center and are available for \$65.00 per night for a double occupancy twin room. Dorms come with a private en suite bathroom, TV with cable, air conditioning, Wifi, telephone, and a balcony.

Reserve a dorm room by emailing hospedaje@cdspanama.org - there are only 15 available.





Dining:

The CdS is truly a city within a city with many dining options available without ever leaving the campus. In addition to Holiday Inn's [Panama Ship View Restaurant](#) and its neighboring [La Taberna del Canal](#), there are many other options in the outdoor food court as well as a grocery store and coffee shop. *However, for just a few dollars, an Uber can take one from the CdS to many other dining options throughout Panamá City.*

General Conference Schedule:

Wednesday, March 15:

- 6:00-8:00 PM - Opening Reception (with dinner and opportunity to learn about excursions)

Thursday/Friday, March 16-17:

- 7:00-8:00 AM - Breakfast
- 8:00-1:00 PM - Concurrent Sessions

Saturday, March 18:

- 7:00-8:00 AM - Breakfast
- 8:00-11:30 AM - Concurrent Sessions
- 11:30-1:00 PM - Closing Luncheon

Afternoons (after 1:00 PM) are intentionally left open so you will have time to explore Panamá and all the excitement this beautiful country has to offer!

Some Area Attractions:

Gamboa Rainforest Reserve

Located just 13 miles northwest of CdS, the [Gamboa Rainforest Reserve](#) overlooks the Chagres River and provides opportunities to explore the wildlife of Panamá. An aerial tram travels high into the forest and allows travelers to then climb up an overlook tower where they can observe the Bridge of Americas, the rainforest and river, and even a village of the native Embera. Attendees will certainly want to coordinate an excursion to Gamboa to ride the tram or take a boat trip to Monkey Island and observe ocean tankers up close as they navigate the canal.

Casco Viejo

Just six miles to the southeast of CdS is [Casco Viejo](#) (Spanish for Old Town), a designated World Heritage site, where one can find many restaurants, boutique hotels, rooftop cafes, nightclubs, shops as well as the Metropolitan Cathedral, the Panama Canal Museum, and other historic landmarks.

Amador Causeway

Just a few miles further southeast of Casco Viejo is the Amador Causeway. This collection of four small islands is connected to the mainland by a land bridge and offers visitors the opportunity to rent bicycles or scooters to explore approximately four miles of beautiful Pacific views. On the causeway one can also visit the [Biomuseo](#), the [Punta Culebra Nature Center](#), as well as many restaurants.

Submit Your Proposal [HERE](#)

Register for the Consultation [HERE](#)