

Mass Casualty Incidents at Sporting Venues

Are you ready for the next disaster?

Kori Hudson, MD, FACEP, FACSM

Professor of Clinical Emergency Medicine

MedStar Georgetown University Hospital, MedStar Sports Medicine

GEORGETOWN
UNIVERSITY



MedStar Health



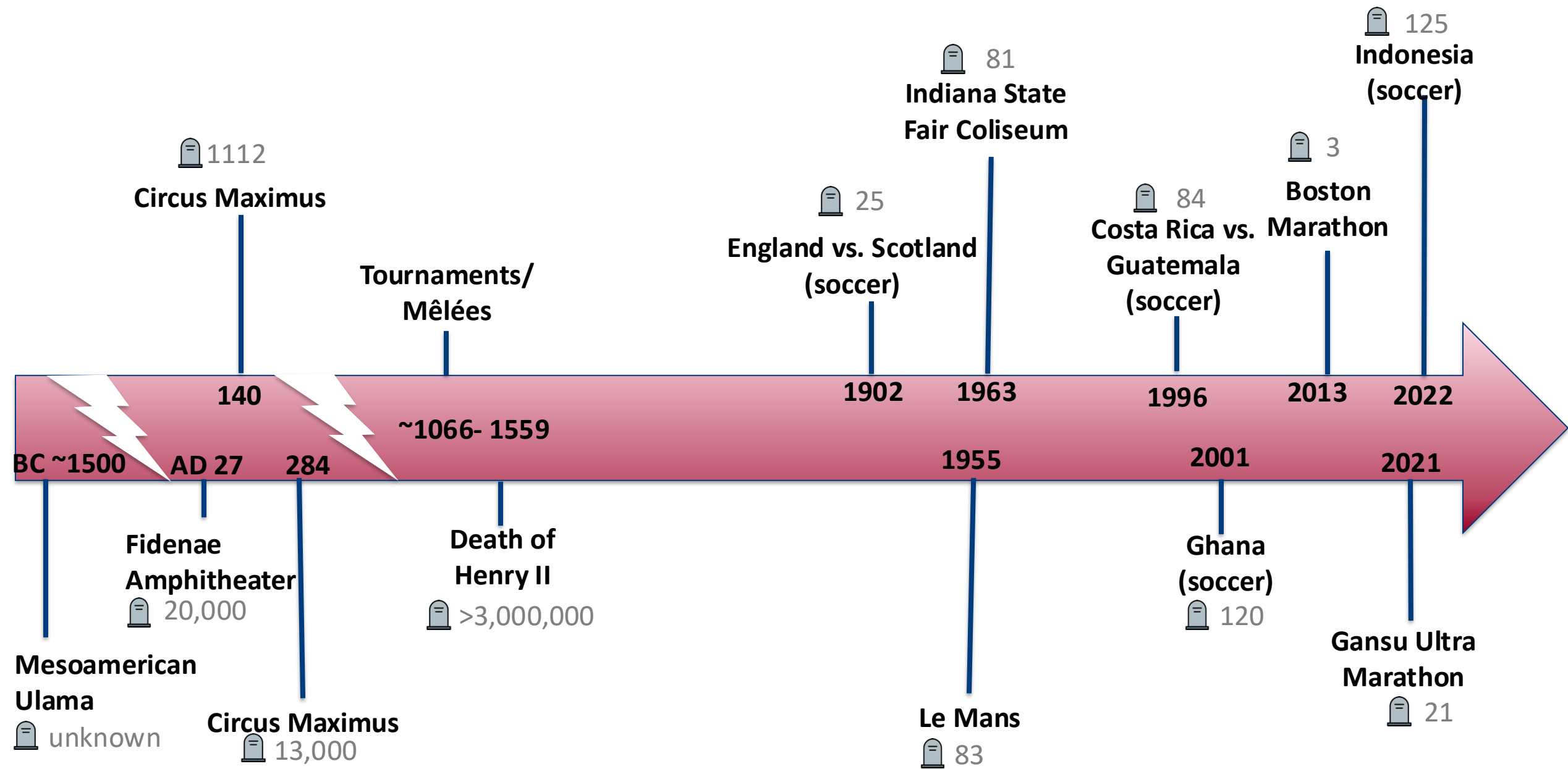
Disclosures



Cerebro
NeuroTech







Defining Mass Casualty Incident (MCI)



“You need to specifically plan based on the size of the event you think you're going to have...

Even when someone gets hurt badly, it may still be just an ‘event.’

It becomes a ‘disaster’ when your resources are overwhelmed.

If you expect event medicine to handle your disaster, you've set yourself up for failure.”

**- David Persse, MD, medical director,
Houston Fire Department**

Risk Assessment- Understanding the Threats



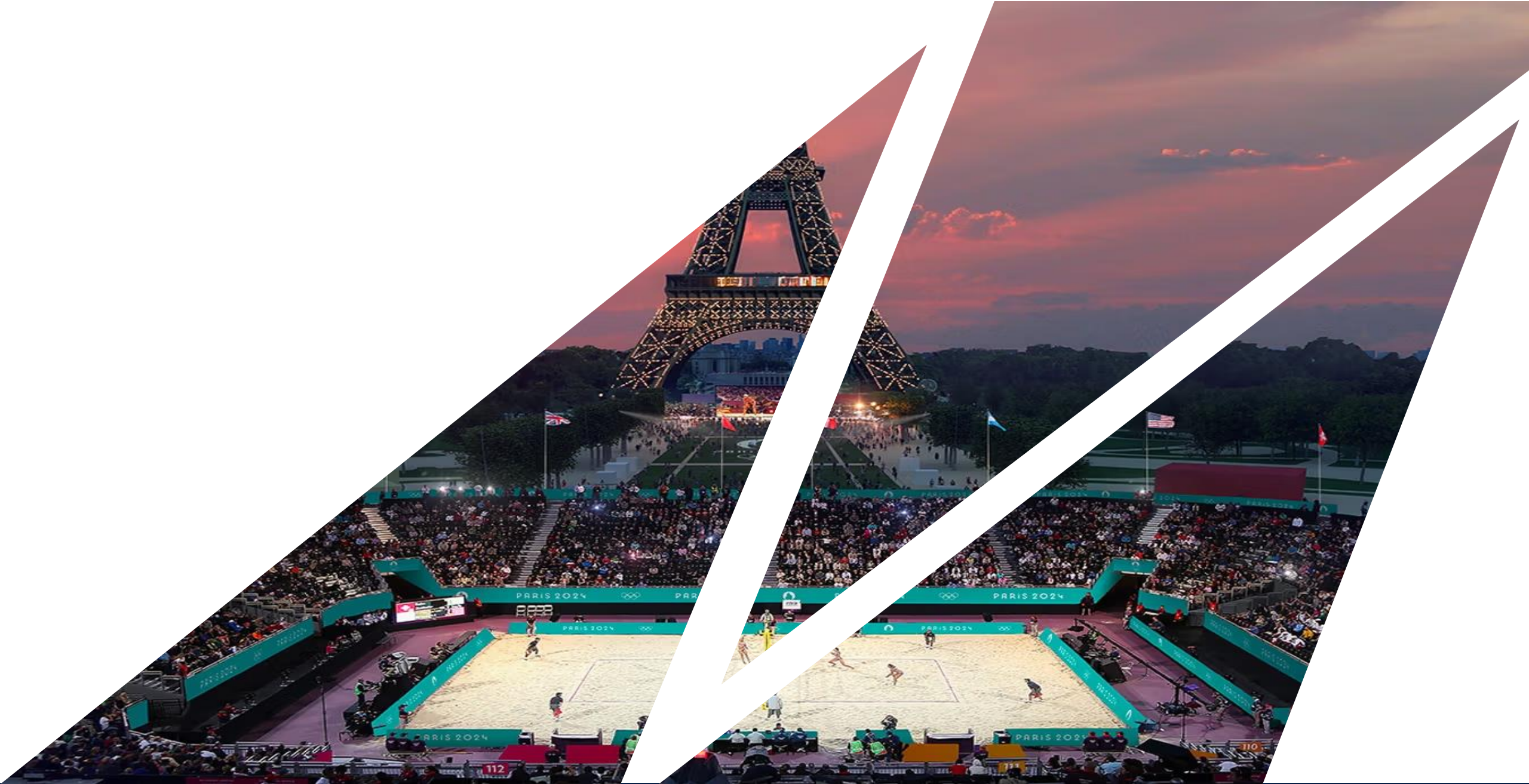
BREAKING NEWS
PARIS ATTACKS
President Hollande calls for "military reinforcements"









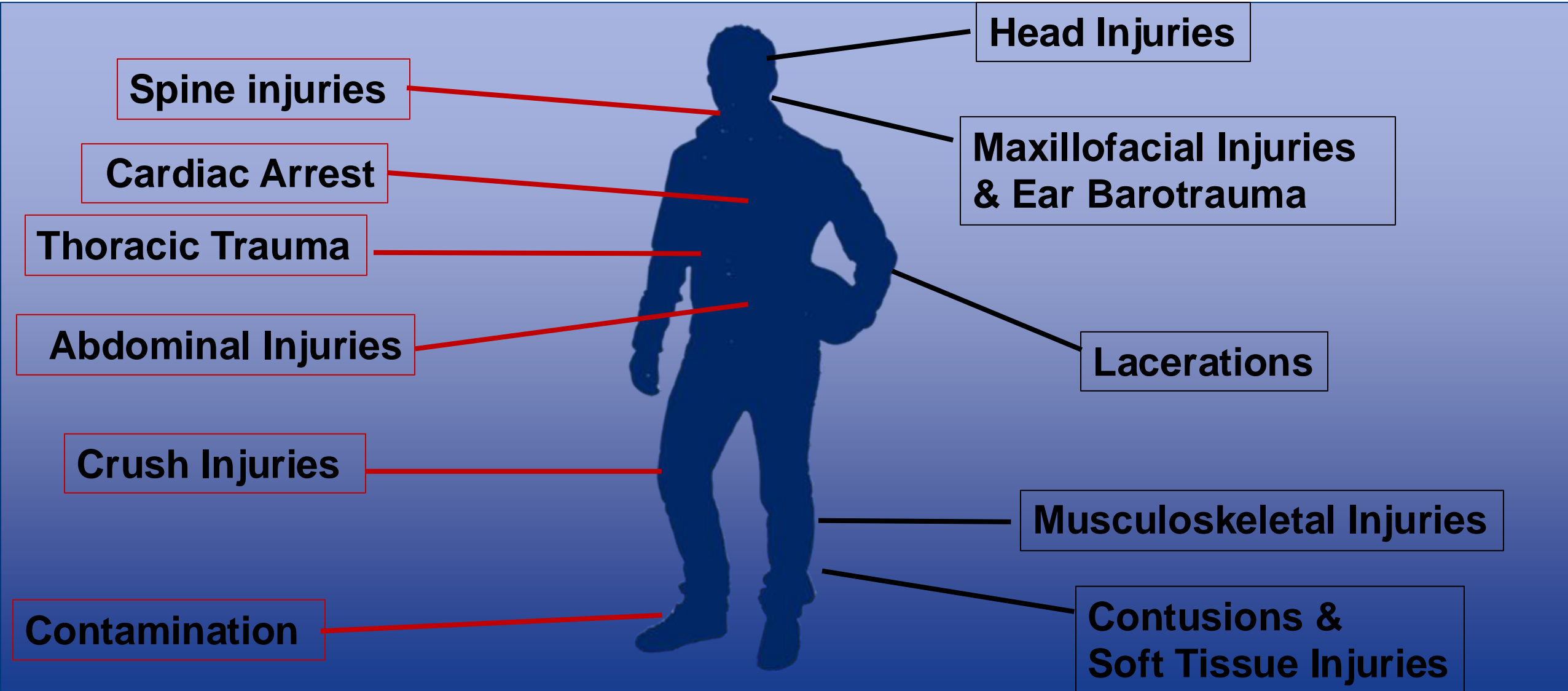




"IN CHARGE"



~~Prepare For Common Injuries~~ **Critical**



Evacuation Planning



Team/Staff
Evacuation

Exit to 6th St

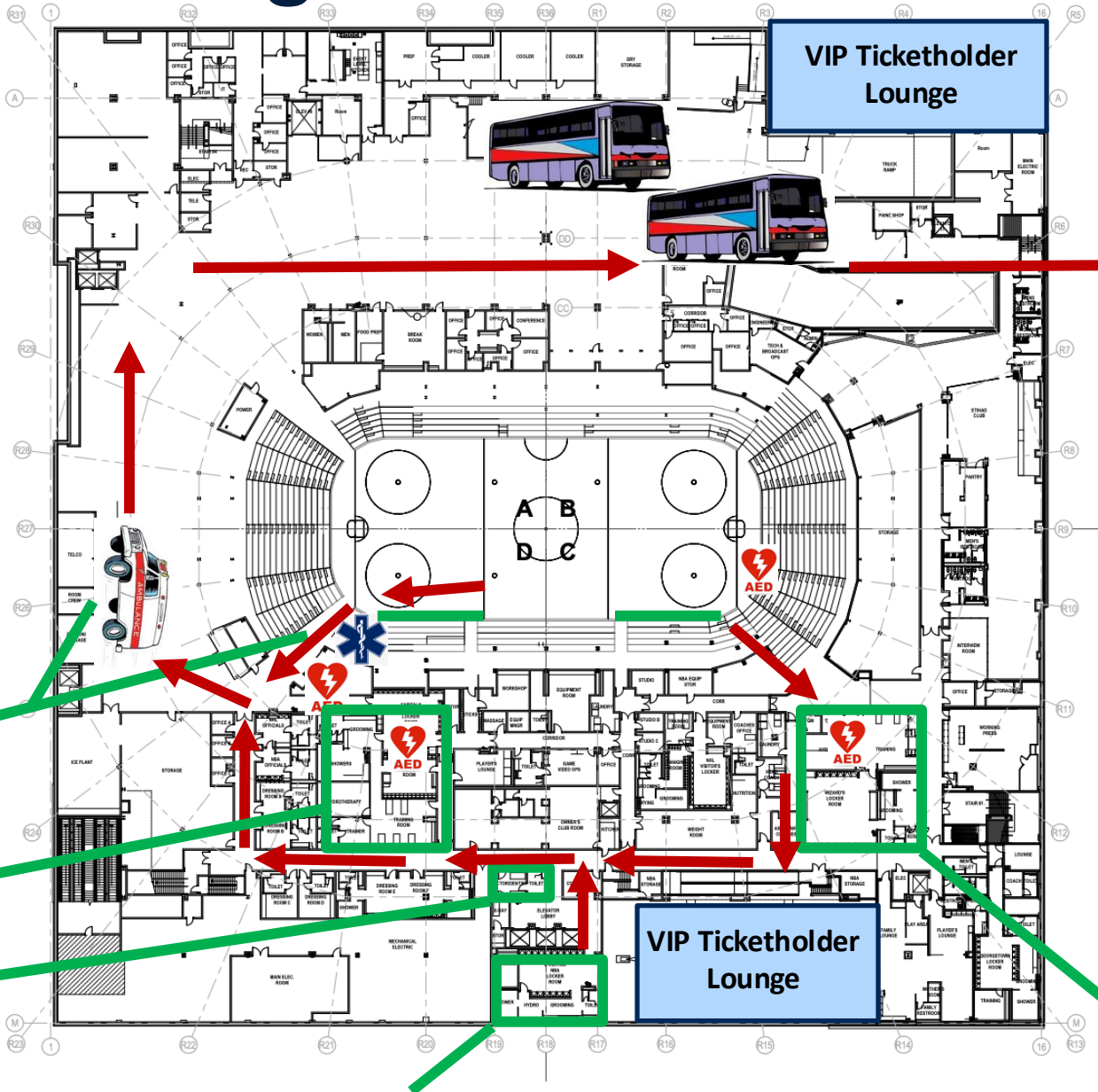
EMS/Ambulance
In tunnel by Visitor Bench

NHL Home Locker Room

Physicians/X-ray

NBA Home Locker Room

NBA Visitor Locker Room



SALT Triage

- **Sort**
- **Assess**
- **Life Saving Interventions**
- **Treatment/Transport**

- **RED- Immediate**

- **YELLOW- Delayed**

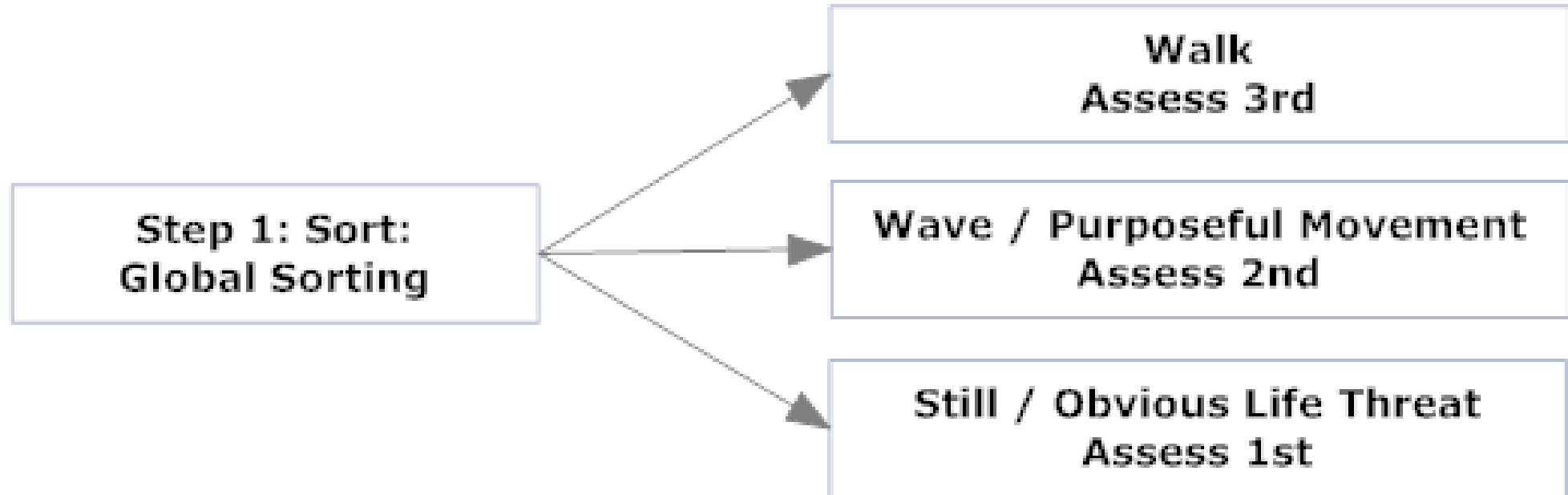
- **GREEN**

- **GRAY**

- Control Major Bleeding
- Open Airway
 - Kids- consider 2 breaths



Sort



“If you can get up and walk, go to _____”

“If you need help, wave your hand, we’ll come to you as quickly as possible”

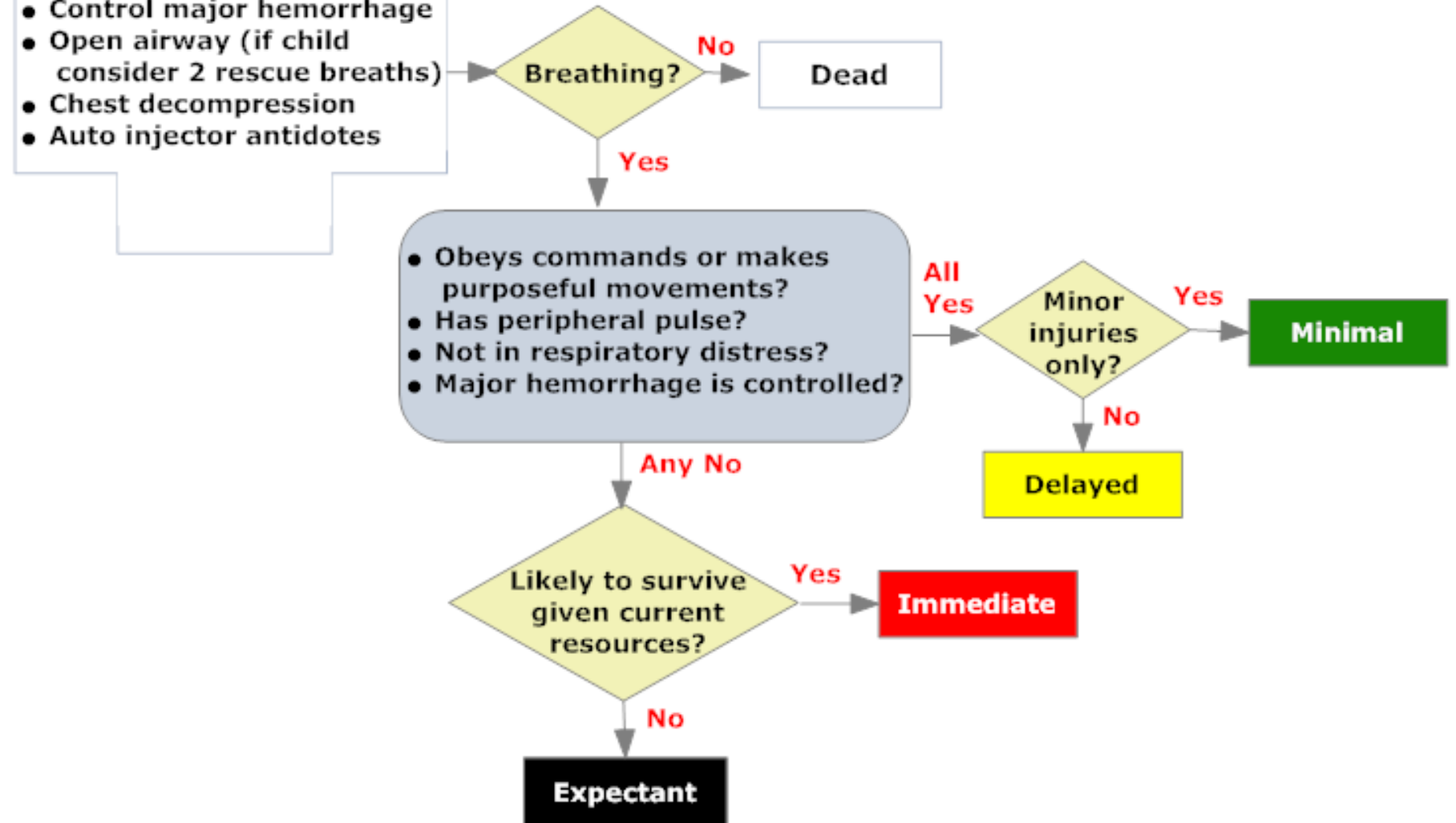
Go to the not-walking, not-waving patients first.

Assess

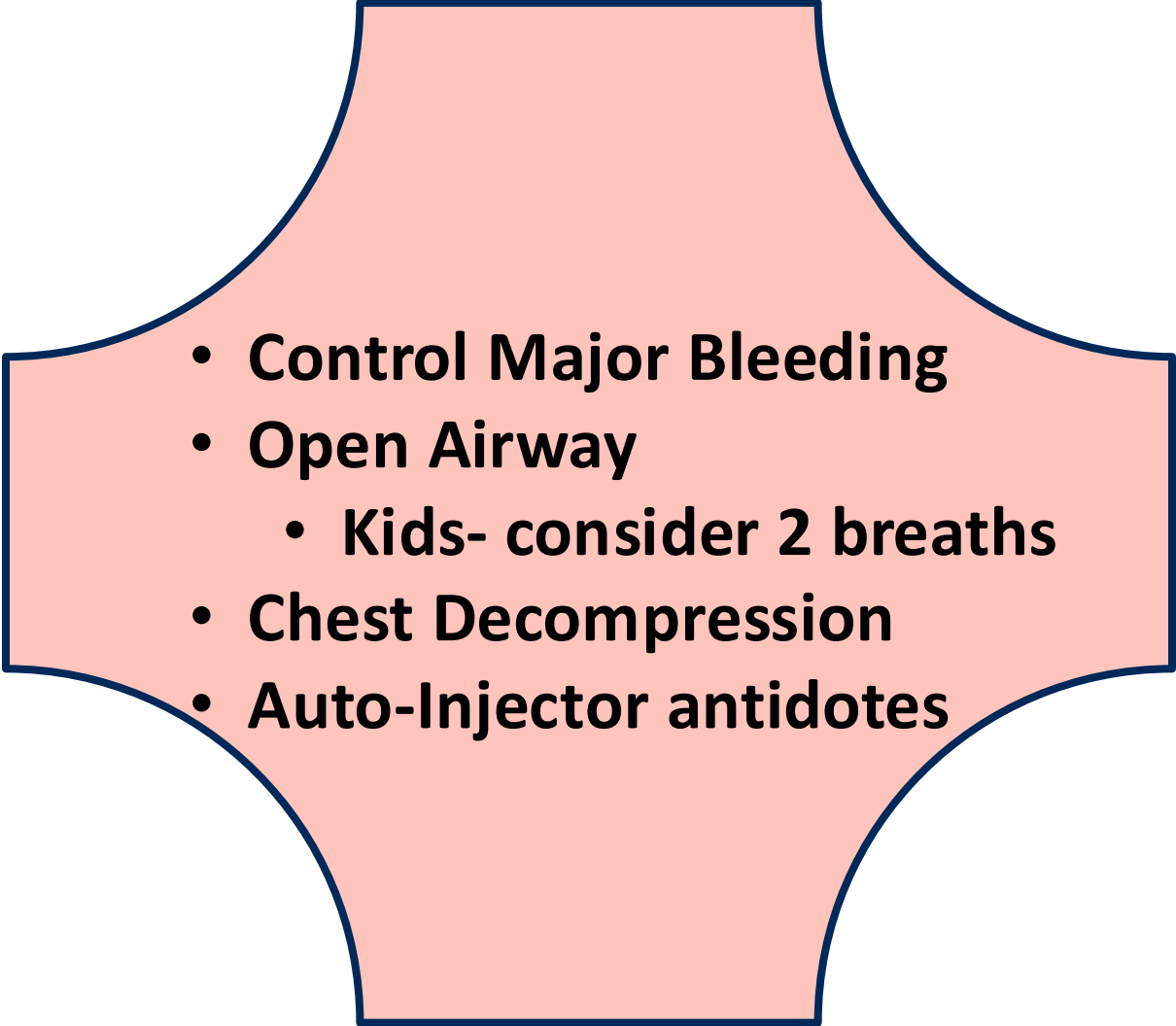
Step 2 - Assess: Individual Assessment

Lifesaving Interventions:

- Control major hemorrhage
- Open airway (if child consider 2 rescue breaths)
- Chest decompression
- Auto injector antidotes



Life Saving Interventions

- 
- **Control Major Bleeding**
 - **Open Airway**
 - **Kids- consider 2 breaths**
 - **Chest Decompression**
 - **Auto-Injector antidotes**

Treat/Transport: Five Categories

- **RED- Immediate**
- **YELLOW- Delayed**
- **GREEN- Minor**
- **GRAY- Expectant**
- **BLACK- Deceased**

Ways to Identify Patients

Triage Tags & Triage Tape

NY 565959 NY 565959

EYAC-AID[®] TRIAGE TAG

CONTAMINATION:
NO YES
Contaminated Uncontaminated

Respiration Yes No
Pulse ≥ 100 ≥ 100
Mental Status Con. Wt. Conf. Wt.
MVA + (injuries) (injuries) (injuries) (injuries)
Time Type BP Respiration
Time Drug Status Damage
Major Injuries
Description

Personal Information
Name
Address
City State Zip Home
Male Female Age Weight

DECEASED
IMMEDIATE
DELAYED
MINOR

NY 565959 NY 565959



Other Options- START Triage

A = No respirations

B = $RR > 30$

C = Cap $<2s$ / No Rad Pulse

D = Can't follow commands

Not green, red or black

Can walk away

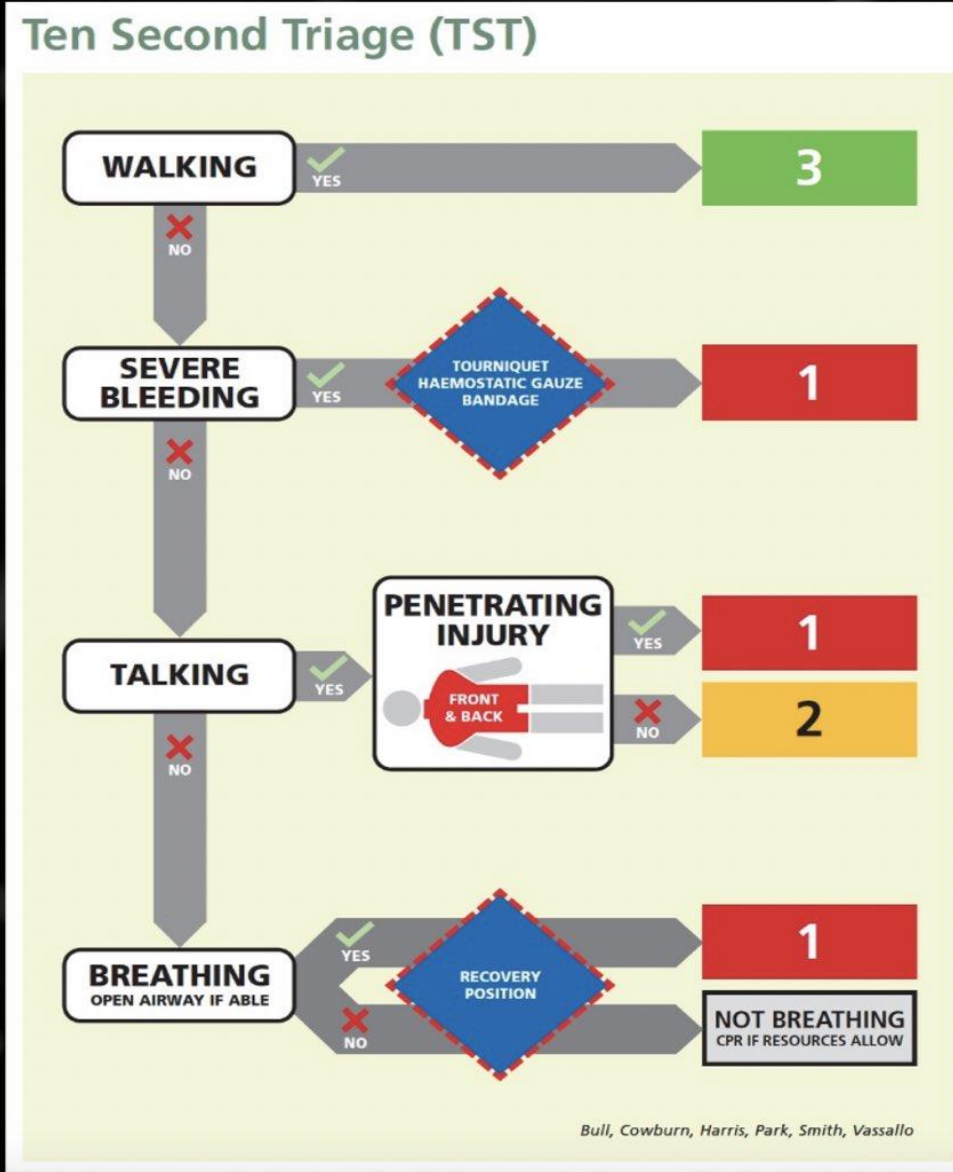
Other Options- 10-second Triage

Rapidly filters walking

No physiological measurements

Simple response check

Prioritises Unconscious



Pragmatic = 'real world' actions

Prioritises external bleeding

Prioritises central penetrating injury

Supports resus where able



PLAN ✓

PREPARE ✓

PERFORM ✓

“Remember- when disaster strikes,
the time to prepare has passed.”

~Steven Cyros



Questions?



kbh25@georgetown.edu

GEORGETOWN
UNIVERSITY



MedStar Health

Thank You