

# Common Bees of New England

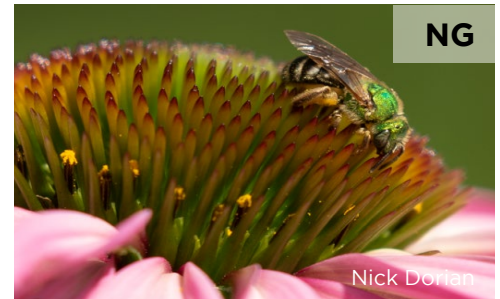
**Bumble bees**  
(*Bombus* spp.)



**Honey bees**  
(*Apis mellifera*)



**Metallic sweat bees**  
(*Agapostemon* spp.)



**Long-horned bees**  
(*Melissodes* spp.)



**Mason bees**  
(*Osmia* spp.)



**Leaf-cutter bees**  
(*Megachile* spp.)



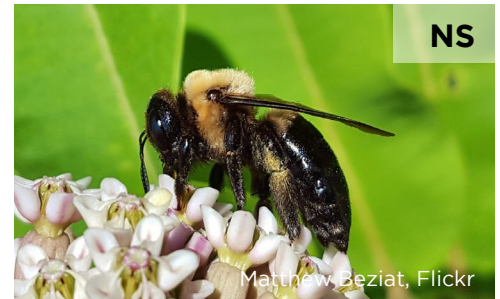
**Cuckoo bees**  
(*Nomada* spp.)



**Cellophane bees**  
(*Colletes* spp.)



**Eastern carpenter bees**  
(*Xylocopa virginica*)



N = native, E = exotic, NE = both native and exotic species of this group live in New England  
G = nests below ground, S = nests in cavities above ground, C = lays eggs in nests of other bees, H = uses man-made hives, B = uses bee hotels

## Did you know?

1. >350 species of bees live in New England
2. Most bees are solitary: they don't have a colony or make honey
3. Male bees cannot sting, and most native bees are not aggressive
4. Specialist bees collect pollen from only a few species of plants

## How to help bees:

- Grow native plants
- Leave some ground unmulched
- Don't apply pesticides
- Don't mow as often



Tufts  
Pollinator Initiative