



FALL 2023 INTERWOVEN™

SPRINGS|home
CREATIVE

SYNTHETIC & NATURAL FIBER SUBSTRATES



BRUGES

CONTENT: 100% LINEN
WIDTH: 60"
PRINTABLE WIDTH: 58"
WEIGHT: 6.75 OZ/YD² (229 GSM)
ABRASION: GRADE 3 @ 30,000+ WYZENBEEK
CROCKING: 4 - DRY; 3 - WET
FLAMMABILITY: CAL TB 117 — PASS
LIGHTFASTNESS: CLASS 4 FOR 40 HOURS
CLEANING CODE: WS
CARE INSTRUCTIONS: Spot clean with water and mild detergent. Blot the stain gently with a cloth dampened with this solution. Remove any residual foam or suds by repeating the procedure with water only.



CHARLOTTE

CONTENT: 100% POLYESTER
WIDTH: 57"
PRINTABLE WIDTH: 55"
WEIGHT: 6.88 OZ/YD² (233 GSM)
ABRASION: GRADE 3 @ 60,000+ WYZENBEEK
CROCKING: 4 - DRY; 3 - WET
FLAMMABILITY: NFPA 701 — PASS
 CAL TB 117 — PASS
LIGHTFASTNESS: CLASS 4 FOR 40 HOURS
CLEANING CODE: WS
CARE INSTRUCTIONS: Spot clean with water and mild detergent. Blot the stain gently with a cloth dampened with this solution. Remove any residual foam or suds by repeating the procedure with water only.



DONEGAL

CONTENT: 97% POLYESTER/3% LINEN
WIDTH: 56"
PRINTABLE WIDTH: 54"
WEIGHT: 14.56 OZ/YD² (491 GSM)
ABRASION: GRADE 5 @ 50,000+ WYZENBEEK
CROCKING: 4 - DRY; 4 - WET
FLAMMABILITY: CAL TB 117 — PASS
LIGHTFASTNESS: CLASS 4 FOR 40 HOURS
CLEANING CODE: S
CARE INSTRUCTIONS: Spot clean only with water-free dry-cleaning solvent.



FINE SATEEN

CONTENT: 100% COTTON
WIDTH: 58"
PRINTABLE WIDTH: 56"
WEIGHT: 4.72 OZ/YD² (160 GSM)
ABRASION: GRADE 3 @ 15,000+ WYZENBEEK
CROCKING: 4 - DRY; 3 - WET
FLAMMABILITY: CAL TB 117 — PASS
LIGHTFASTNESS: CLASS 4 FOR 40 HOURS
CLEANING CODE: WS
CARE INSTRUCTIONS: Spot clean with water and mild detergent. Blot the stain gently with a cloth dampened with this solution. Remove any residual foam or suds by repeating the procedure with water only.



HEAVY LINEN

CONTENT: 100% POLYESTER
WIDTH: 58"
PRINTABLE WIDTH: 56"
WEIGHT: 7.50 OZ/YD² (255 GSM)
ABRASION: GRADE 3 @ 40,000+ WYZENBEEK
CROCKING: 4 - DRY; 4 - WET
FLAMMABILITY: NFPA 701 — PASS
 CAL TB 117 — PASS
LIGHTFASTNESS: CLASS 4 FOR 40 HOURS
CLEANING CODE: WS
CARE INSTRUCTIONS: Spot clean with water and mild detergent. Blot the stain gently with a cloth dampened with this solution. Remove any residual foam or suds by repeating the procedure with water only.





HI LO

CONTENT: 69% POLYESTER/28% RAYON/
3% COTTON
WIDTH: 56"
PRINTABLE WIDTH: 54"
WEIGHT: 15.44 OZ/YD² (522 GSM)
ABRASION: GRADE 3 @ 50,000+
WYZENBEEK
CROCKING: 4 - DRY; 4 - WET
FLAMMABILITY: CAL TB 117 — PASS
LIGHTFASTNESS: CLASS 4 FOR 40 HOURS
CLEANING CODE: S
CARE INSTRUCTIONS: Spot clean only with
water-free dry-cleaning solvent.



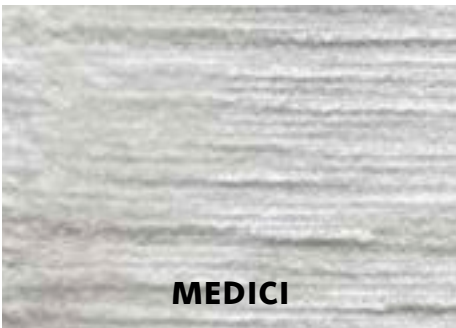
LEENANE

CONTENT: 97% COTTON/3% LINEN
WIDTH: 60"
PRINTABLE WIDTH: 58"
WEIGHT: 6.40 OZ/YD² (217 GSM)
ABRASION: GRADE 3 @ 20,000+ WYZENBEEK
CROCKING: 4 - DRY; 3 - WET
FLAMMABILITY: CAL TB 117 — PASS
LIGHTFASTNESS: CLASS 4 FOR 40 HOURS
CLEANING CODE: WS
CARE INSTRUCTIONS: Spot clean with water
and mild detergent. Blot the stain gently with
a cloth dampened with this solution. Remove
any residual foam or suds by repeating the
procedure with water only.



LUNA

CONTENT: 100% POLYESTER
WIDTH: 62"
PRINTABLE WIDTH: 60"
WEIGHT: 10.25 OZ/YD² (348 GSM)
ABRASION: GRADE 3 @ 50,000+ WYZENBEEK
CROCKING: 4.5 - DRY; 4 - WET
FLAMMABILITY: CAL TB 117 — PASS
LIGHTFASTNESS: CLASS 4 FOR 40 HOURS
CLEANING CODE: S
CARE INSTRUCTIONS: Spot clean only with
water-free dry-cleaning solvent.



MEDICI

CONTENT: 100% POLYESTER
WIDTH: 57"
PRINTABLE WIDTH: 55"
WEIGHT: 8.32 OZ/YD² (282 GSM)
ABRASION: GRADE 3 @ 45,000+ WYZENBEEK
CROCKING: 4 - DRY; 3 - WET
FLAMMABILITY: CAL TB 117 — PASS
LIGHTFASTNESS: CLASS 3 FOR 40 HOURS
CLEANING CODE: S
CARE INSTRUCTIONS: Spot clean only with
water-free dry-cleaning solvent.



MOHAIR

CONTENT: 100% POLYESTER
WIDTH: 58"
PRINTABLE WIDTH: 56"
WEIGHT: 9.86 OZ/YD² (328 GSM)
ABRASION: GRADE 4 @ 50,000+ WYZENBEEK
CROCKING: 4 - DRY; 4 - WET
FLAMMABILITY: CAL TB 117 — PASS
LIGHTFASTNESS: CLASS 4 FOR 40 HOURS
CLEANING CODE: S
CARE INSTRUCTIONS: Spot clean only with
water-free dry-cleaning solvent.



NEWPORT

CONTENT: 97% COTTON/3% LINEN
WIDTH: 60"
PRINTABLE WIDTH: 58"
WEIGHT: 7.44 OZ/YD² (252 GSM)
ABRASION: GRADE 3 @ 20,000+ WYZENBEEK
CROCKING: 4 - DRY; 3 - WET
FLAMMABILITY: CAL TB 117 — PASS
LIGHTFASTNESS: CLASS 4 FOR 40 HOURS
CLEANING CODE: WS
CARE INSTRUCTIONS: Spot clean with water
and mild detergent. Blot the stain gently with
a cloth dampened with this solution. Remove
any residual foam or suds by repeating the
procedure with water only.



OSTRICH

CONTENT: 100% POLYESTER
WIDTH: 58"
PRINTABLE WIDTH: 56"
WEIGHT: 9.92 OZ/YD² (336 GSM)
ABRASION: GRADE 3 @ 50,000+ WYZENBEEK
CROCKING: 4 - DRY; 4 - WET
FLAMMABILITY: CAL TB 117 — PASS
LIGHTFASTNESS: CLASS 4 FOR 40 HOURS
CLEANING CODE: S
CARE INSTRUCTIONS: Spot clean only with water-free dry-cleaning solvent.



PELLE

CONTENT: 100% POLYESTER
WIDTH: 56"
PRINTABLE WIDTH: 54"
WEIGHT: 7.5 OZ/YD² (254 GSM)
ABRASION: GRADE 3 @ 50,000+ WYZENBEEK
CROCKING: 4.5 - DRY; 4 - WET
FLAMMABILITY: CAL TB 117 — PASS
LIGHTFASTNESS: CLASS 4 FOR 40 HOURS
CLEANING CODE: S
CARE INSTRUCTIONS: Spot clean only with water-free dry-cleaning solvent.



RAFFIA

CONTENT: 100% POLYESTER
WIDTH: 56"
PRINTABLE WIDTH: 54"
WEIGHT: 6.7 OZ/YD² (227 GSM)
ABRASION: GRADE 3 @ 30,000+ WYZENBEEK
CROCKING: 4 - DRY; 3 - WET
FLAMMABILITY: CAL TB 117 — PASS
LIGHTFASTNESS: CLASS 4 FOR 40 HOURS
CLEANING CODE: WS
CARE INSTRUCTIONS: Spot clean with water and mild detergent. Blot the stain gently with a cloth dampened with this solution. Remove any residual foam or suds by repeating the procedure with water only.



SACKCLOTH

CONTENT: 85% POLYESTER/10% COTTON/
5% OTHER
WIDTH: 56"
PRINTABLE WIDTH: 54"
WEIGHT: 16.32 OZ/YD² (552 GSM)
ABRASION: GRADE 4 @ 50,000+ WYZENBEEK
CROCKING: 4 - DRY; 4 - WET
FLAMMABILITY: CAL TB 117 — PASS
LIGHTFASTNESS: CLASS 4 FOR 40 HOURS
CLEANING CODE: S
CARE INSTRUCTIONS: Spot clean only with water-free dry-cleaning solvent.



SPRINGS WHITE

CONTENT: 100% POLYESTER
WIDTH: 57"
PRINTABLE WIDTH: 55"
WEIGHT: 10.32 OZ/YD² (349 GSM)
ABRASION: GRADE 3 @ 50,000+ WYZENBEEK
CROCKING: 4 - DRY; 4 - WET
FLAMMABILITY: CAL TB 117 — PASS
LIGHTFASTNESS: CLASS 4 FOR 40 HOURS
CLEANING CODE: S
CARE INSTRUCTIONS: Spot clean only with water-free dry-cleaning solvent.



TRAPPER

CONTENT: 100% POLYESTER
WIDTH: 58"
PRINTABLE WIDTH: 56"
WEIGHT: 9.76 OZ/YD² (331 GSM)
ABRASION: GRADE 3 @ 50,000+ WYZENBEEK
CROCKING: 4.5 - DRY; 4.5 - WET
FLAMMABILITY: CAL TB 117 — PASS
LIGHTFASTNESS: CLASS 4 FOR 40 HOURS
CLEANING CODE: S
CARE INSTRUCTIONS: Spot clean only with water-free dry-cleaning solvent.







antiquarian



romantic renaissance

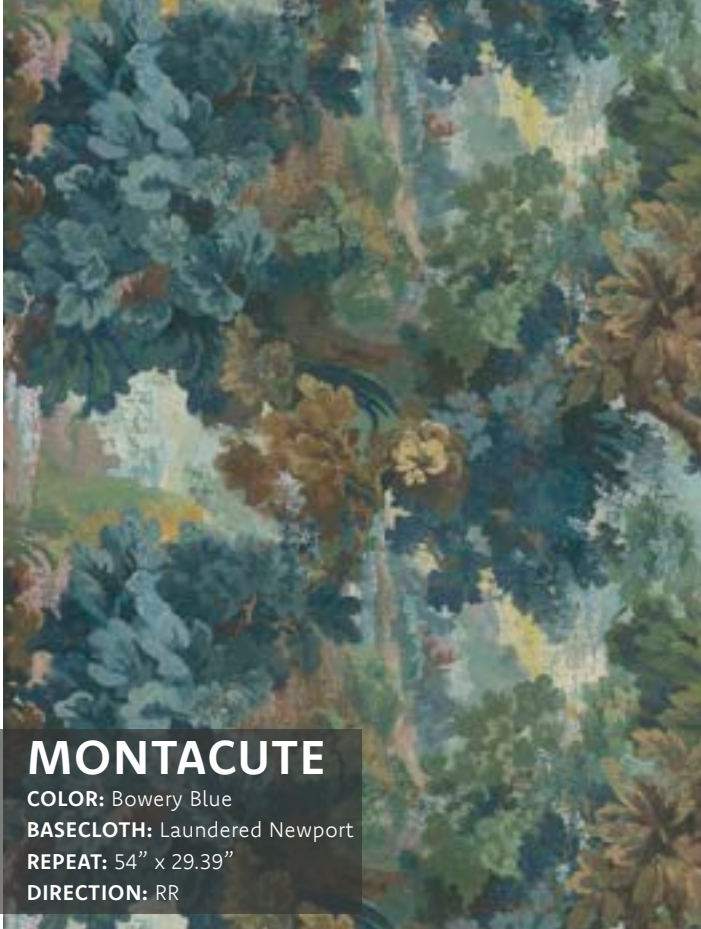


nature filled





OBSCURA



MONTACUTE

COLOR: Bowery Blue
BASECLOTH: Laundered Newport
REPEAT: 54" x 29.39"
DIRECTION: RR



COLOR: Hemlock



COLOR: Soulful



PLUMERA

COLOR: Mercer Blue
BASECLOTH: Medici & Mohair
REPEAT: 9" x 7.78"
DIRECTION: UTR



COLOR: Hemlock



COLOR: Terrain



COLOR: Soulful





JOURNEY

COLOR: Soulful
BASECLOTH: Donegal
REPEAT: 3.38" x 6.12"
DIRECTION: UTR



COLOR: Silt



COLOR: Nuance



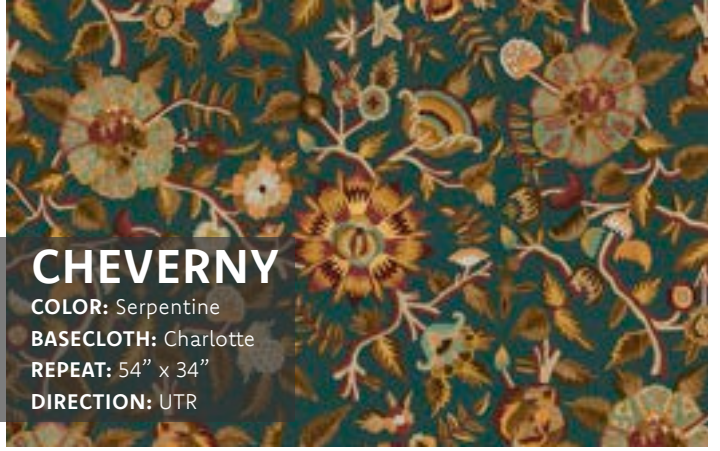
COLOR: Bowery Blue





LENMORE

COLOR: Bowers Blue
BASECLOTH: Donegal
REPEAT: 27" x 24.05"
DIRECTION: UTR



CHEVERNY

COLOR: Serpentine
BASECLOTH: Charlotte
REPEAT: 54" x 34"
DIRECTION: UTR



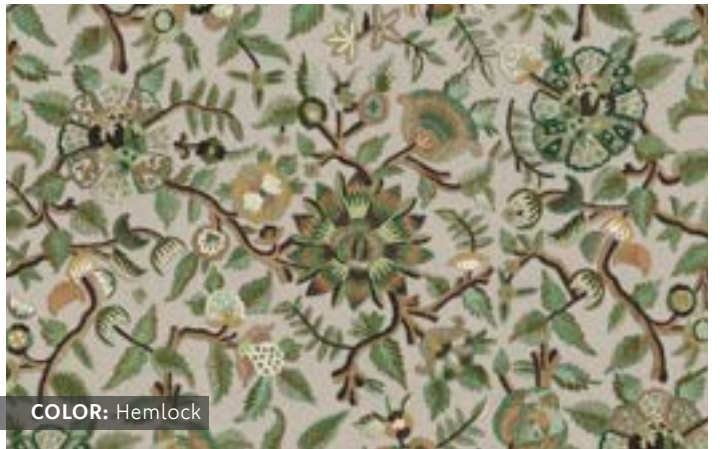
COLOR: Fig



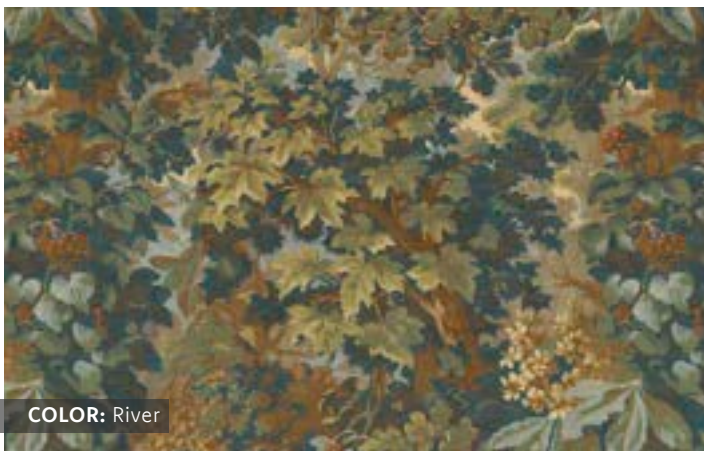
COLOR: Clove



COLOR: Hemlock



COLOR: Hemlock



COLOR: River



COLOR: Bowers Blue



COLOR: Mercer



COLOR: Smudge



COLOR: Rivington



FIESTA

COLOR: Silt
BASECLOTH: Bruges
REPEAT: 27" x 19.72"
DIRECTION: UTR



DANUM

COLOR: Hemlock
BASECLOTH: Bruges
REPEAT: 27" x 14.75"
DIRECTION: UTR



COLOR: Bowery Blue



COLOR: Fossil



COLOR: Obsidian



COLOR: Soulful



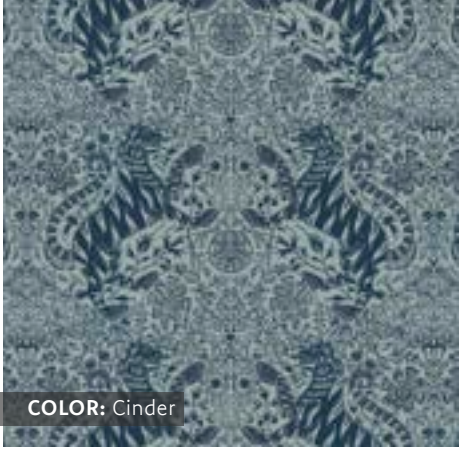


BENI

COLOR: Fig
BASECLOTH: Laundered Newport
REPEAT: 13.5" x 7.21"
DIRECTION: UTR



COLOR: Fossil



COLOR: Cinder



COLOR: Biome Green



COLOR: Obsidian



COLOR: Hemlock







VHAGAR

COLOR: Smudge
BASECLOTH: Medici
REPEAT: 18" x 18"
DIRECTION: UTR



BATAM

COLOR: Otter
BASECLOTH: Donegal
REPEAT: 13.5" x 27"
DIRECTION: UTR



COLOR: Reed



COLOR: Reed



COLOR: Bowery Blue



COLOR: Restful Sage



COMMON CURIOSITIES

idyllic charm



bucolic



bygone heirlooms





KOCHIN

COLOR: Cinder
BASECLOTH: Donegal
REPEAT: 27" x 32.8"
DIRECTION: UTR



COLOR: Bowery



COLOR: Otter



COLOR: Outback



COLOR: Bowery Blue



COLOR: Otter



COLOR: Cinder



CALLA

COLOR: Clove
BASECLOTH: Medici
REPEAT: 13.5" x 32.8"
DIRECTION: UTR





CALLIOPE

COLOR: Calcite
BASECLOTH: Medici
REPEAT: 18" x 56.5"
DIRECTION: UTR



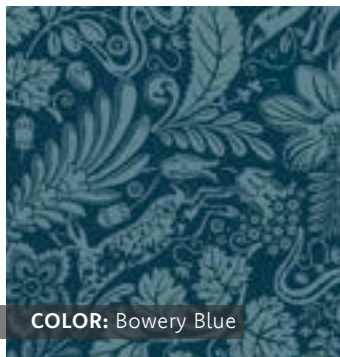
COLOR: Biome Green



COLOR: Clove



COLOR: Otter



COLOR: Bowery Blue



COLOR: Olive





JARA

COLOR: Ottanio Blue
BASECLOTH: Charlotte
REPEAT: 27" x 20.87"
DIRECTION: UTR



AMULETO

COLOR: Laguna
BASECLOTH: Charlotte
REPEAT: 9" x 6.75"
DIRECTION: UTR



DANTE

COLOR: Clary Sage
BASECLOTH: Trapper & Pelle
REPEAT: 27" x 24.26"
DIRECTION: UTR



COLOR: Greenery



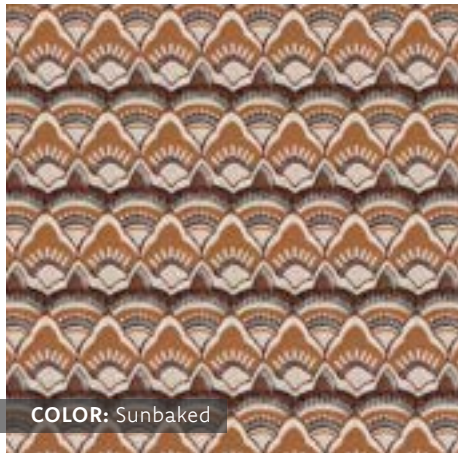
COLOR: Greenery



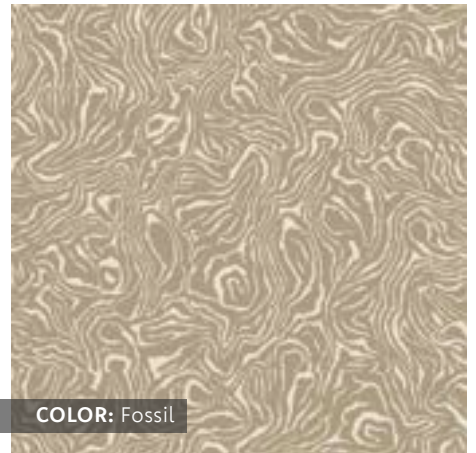
COLOR: Banquise



COLOR: Cherokee Red



COLOR: Sunbaked



COLOR: Fossil



COLOR: Biome Green



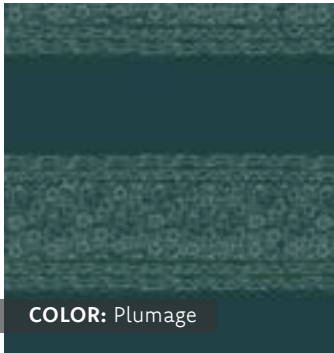
COLOR: Fossil



COLOR: Nuance



COLOR: Fig



COLOR: Plumage

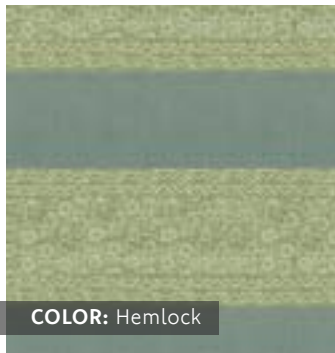


COLOR: Silt



OPHELIA STRIPE

COLOR: Outback
BASECLOTH: Laundered Newport
REPEAT: 13.5" x 5.4"
DIRECTION: RR

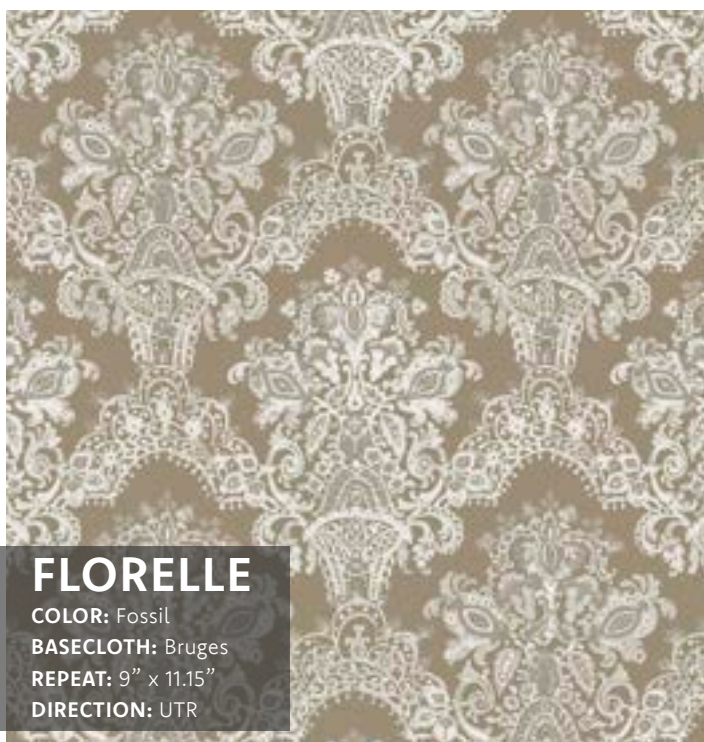


COLOR: Hemlock



COLOR: Lago

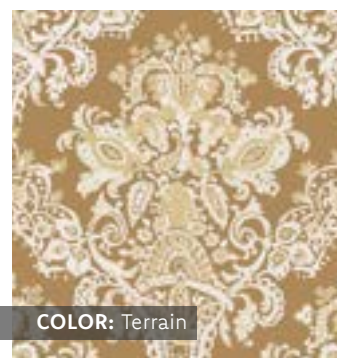




FLORELLE
 COLOR: Fossil
 BASECLOTH: Bruges
 REPEAT: 9" x 11.15"
 DIRECTION: UTR



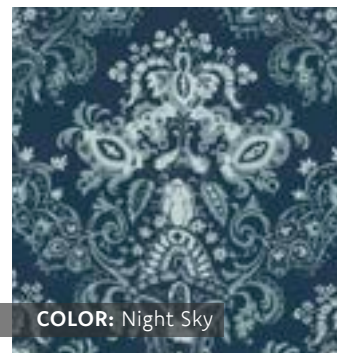
COLOR: Cherokee Red



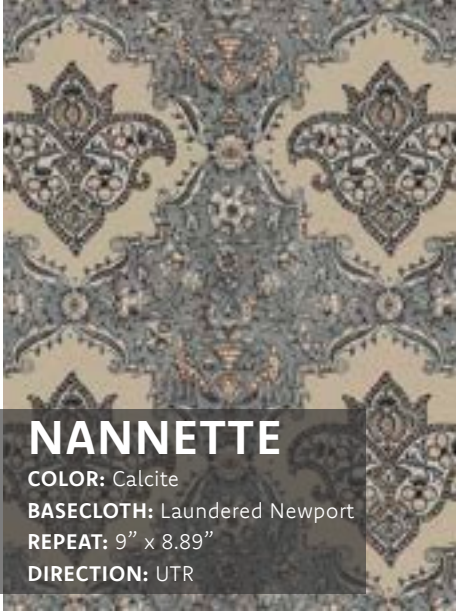
COLOR: Terrain



COLOR: Clary Sage



COLOR: Night Sky



NANNETTE

COLOR: Calcite
BASECLOTH: Laundered Newport
REPEAT: 9" x 8.89"
DIRECTION: UTR



COLOR: Biome Green



COLOR: Bowery Blue

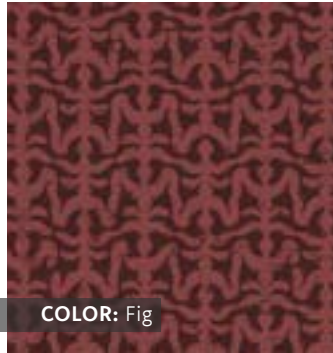


VASELL

COLOR: Night Sky
BASECLOTH: Laundered Newport
REPEAT: 6.75" x 6.75"
DIRECTION: UTR



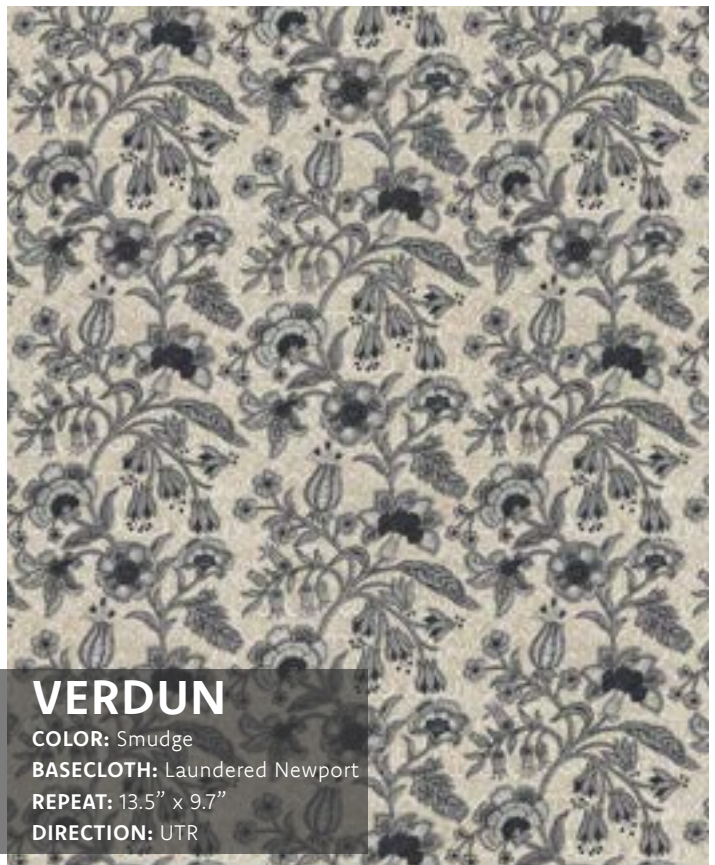
COLOR: Clary Sage



COLOR: Fig



COLOR: Silt



VERDUN

COLOR: Smudge
BASECLOTH: Laundered Newport
REPEAT: 13.5" x 9.7"
DIRECTION: UTR





macroscopic landscape



rhythmic pull

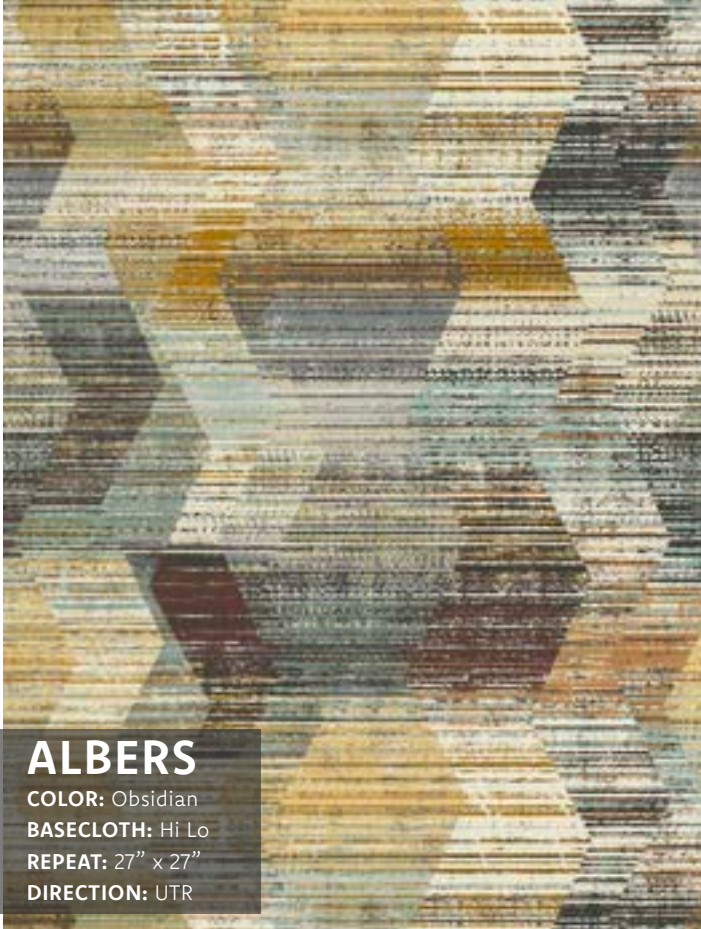


connecting forms





FUTURE FORMS

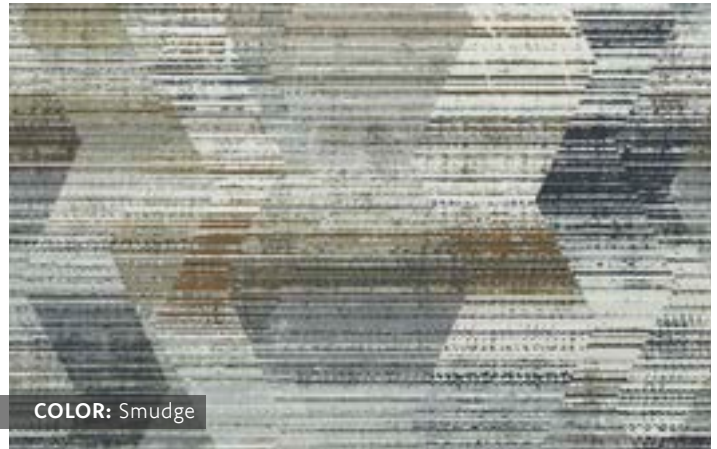


ALBERS

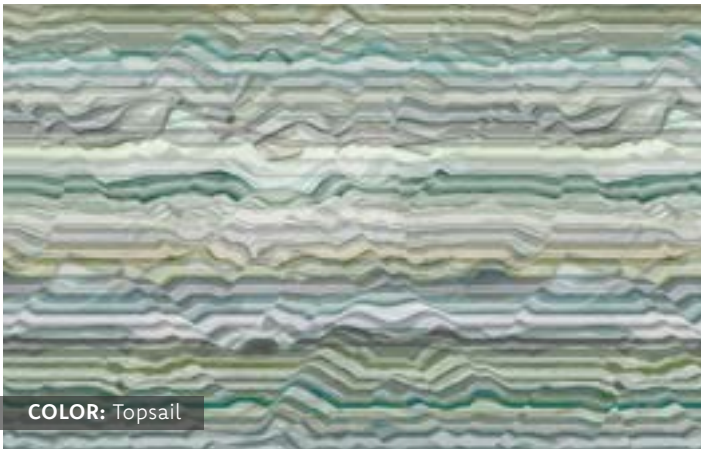
COLOR: Obsidian
BASECLOTH: Hi Lo
REPEAT: 27" x 27"
DIRECTION: UTR



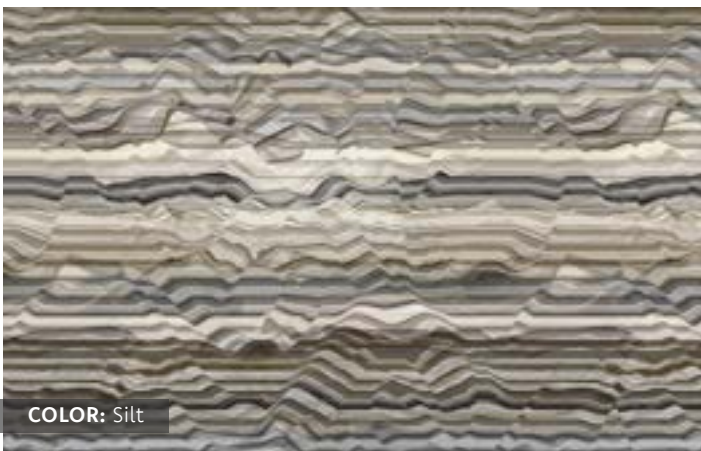
COLOR: Mercer Green



COLOR: Smudge



COLOR: Topsail



COLOR: Silt



VIENNE

COLOR: Obsidian
BASECLOTH: Trapper
REPEAT: 18" x 18"
DIRECTION: UTR





KATAN

COLOR: Obsidian

BASECLOTH: Hi Lo

REPEAT: 3.38" x 3.48"

DIRECTION: UTR



COLOR: Mercer Green



COLOR: Smudge







FOGGIA

COLOR: Mineral
BASECLOTH: Pelle
REPEAT: 27" x 27"
DIRECTION: UTR



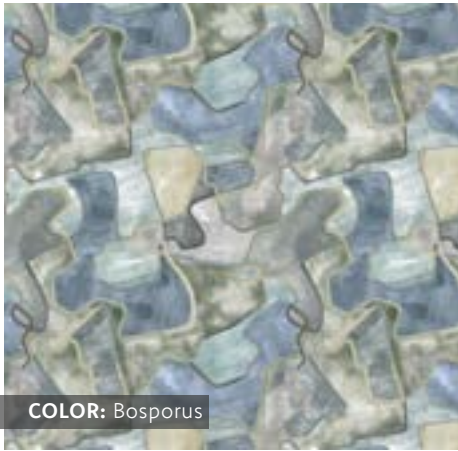
AURETA

COLOR: Desert Dusk
BASECLOTH: Donegal
REPEAT: 13.5" x 14.08"
DIRECTION: UTR



SANTORINI

COLOR: Desert Dusk
BASECLOTH: Ostrich
REPEAT: 9" x 9"
DIRECTION: UTR



COLOR: Bosporus



COLOR: Reed



COLOR: Lago



COLOR: Cimento



COLOR: Terrain



COLOR: Terrain



COLOR: Clary Sage



COLOR: Dusty Clay



SIBILLA

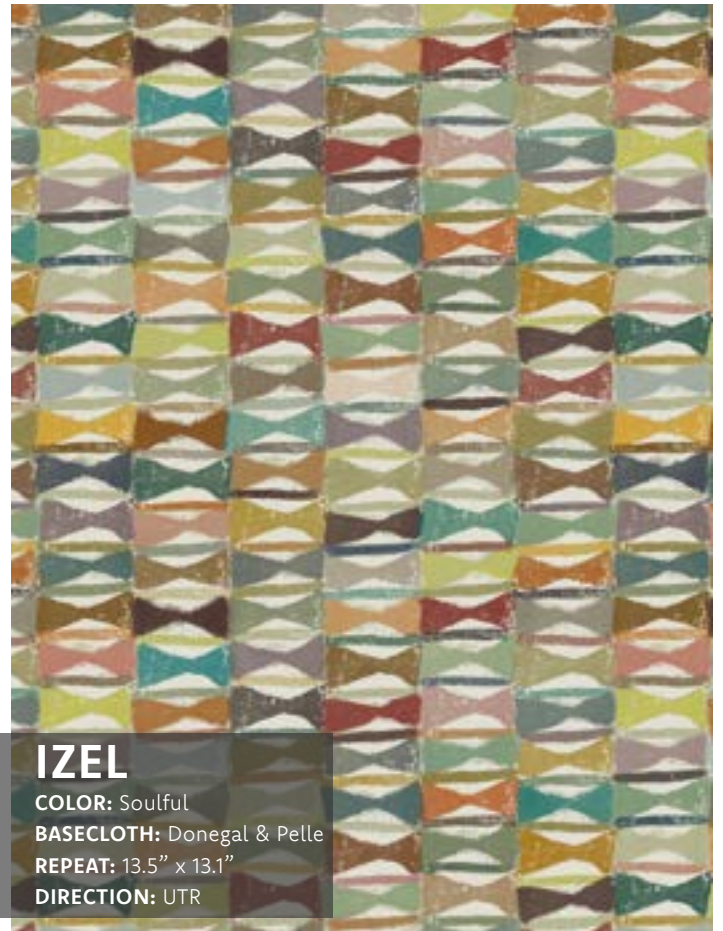
COLOR: Desert Dusk
BASECLOTH: Charlotte
REPEAT: 18" x 18"
DIRECTION: UTR



COLOR: Reed



COLOR: Clary Sage

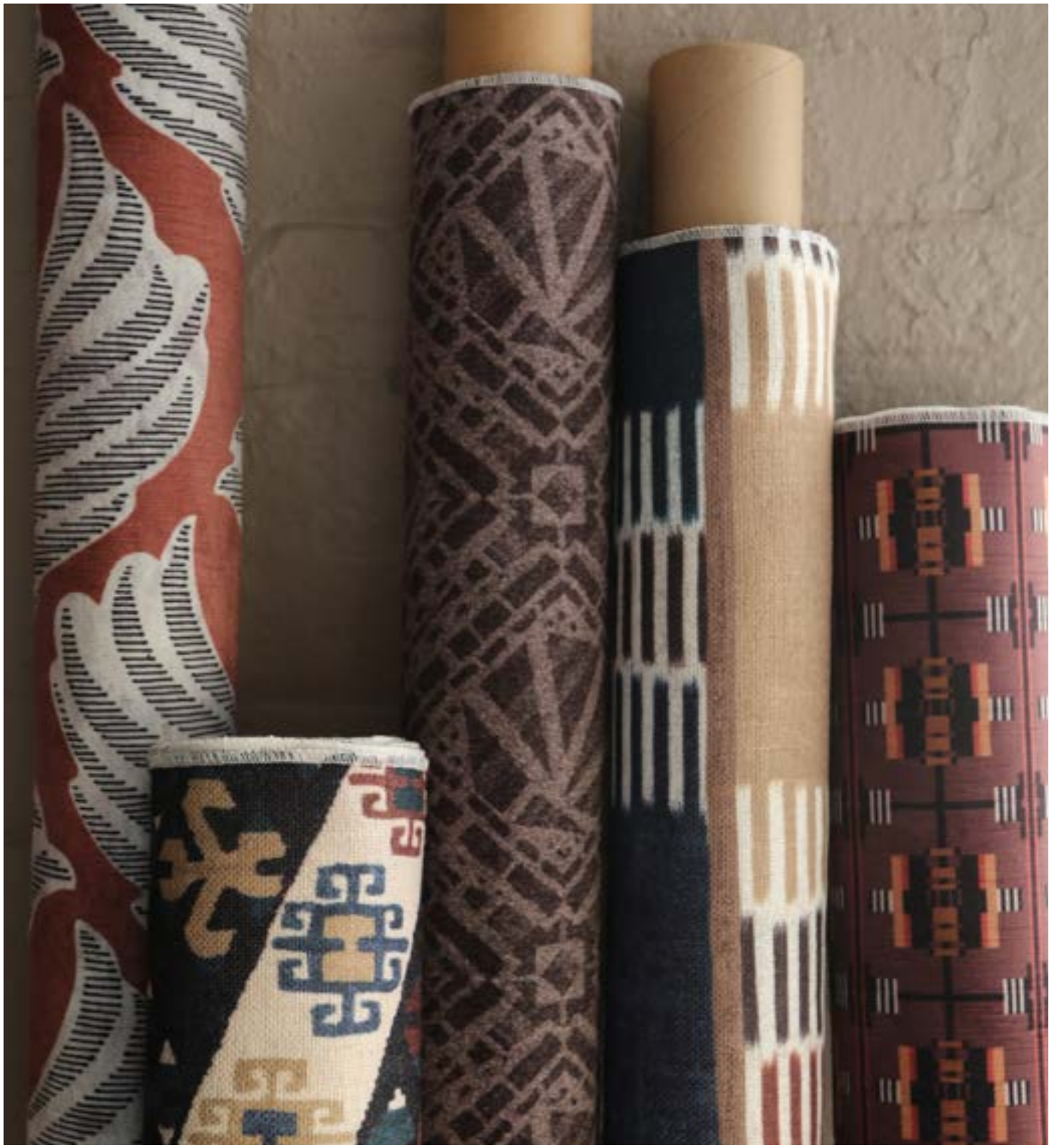


IZEL

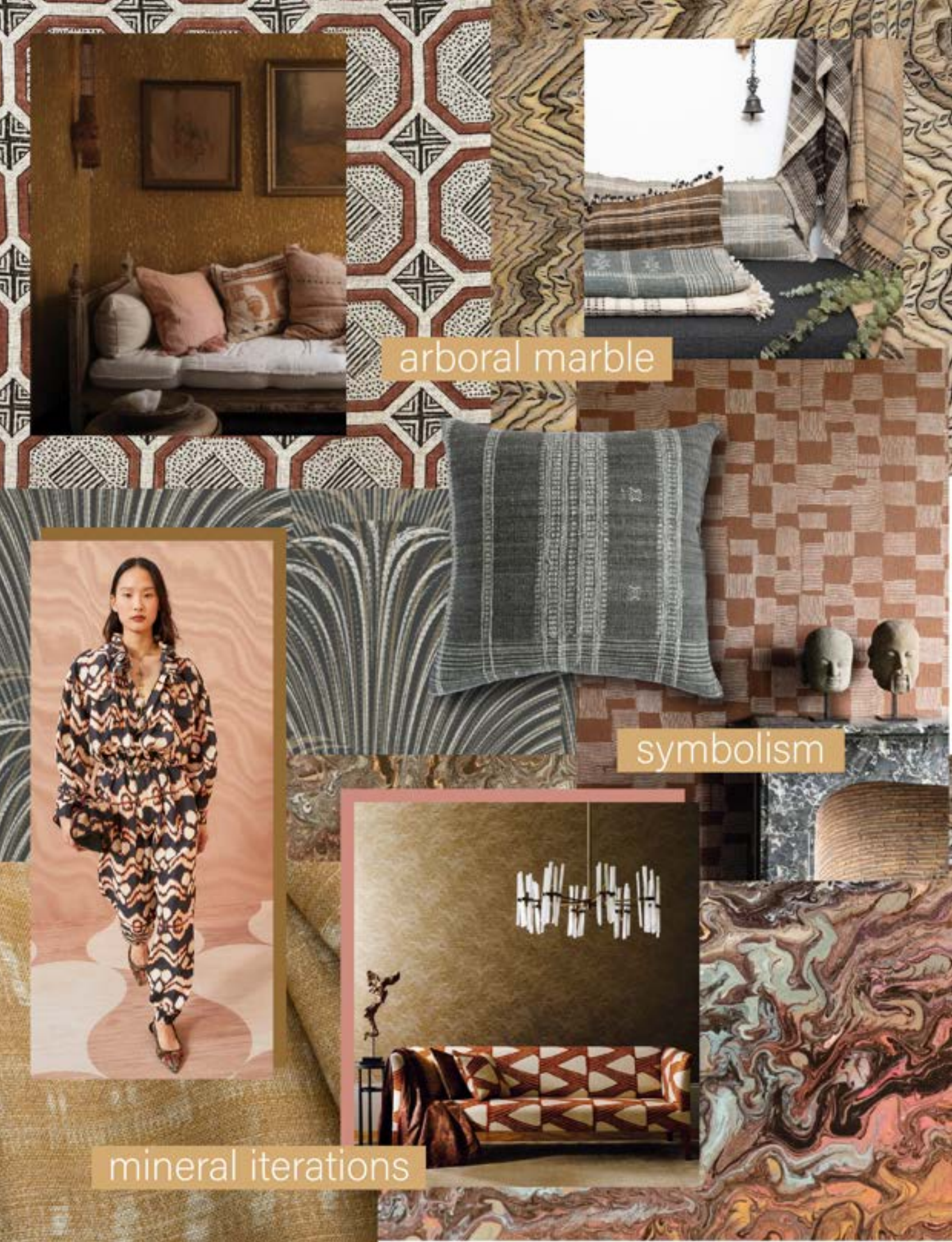
COLOR: Soulful
BASECLOTH: Donegal & Pelle
REPEAT: 13.5" x 13.1"
DIRECTION: UTR







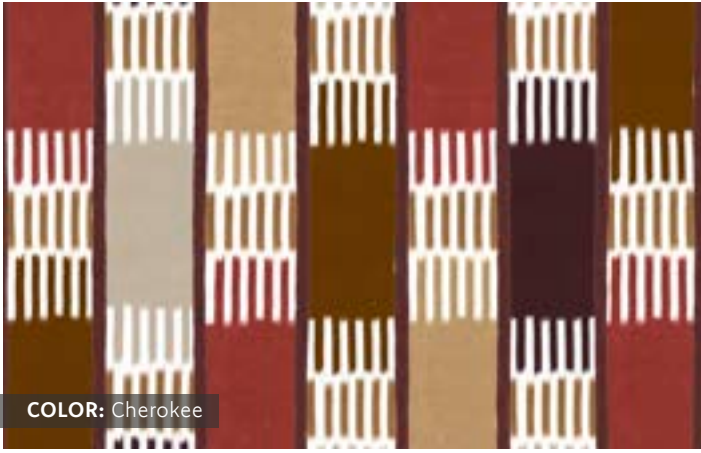
PRIMAL EMBRACE



arboreal marble

symbolism

mineral iterations



COLOR: Cherokee

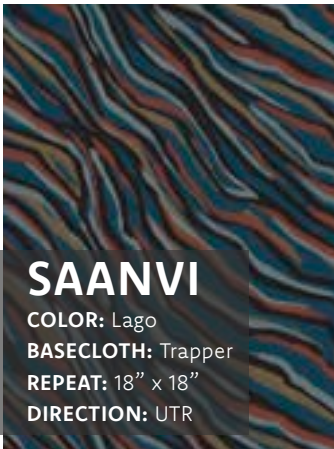


ONDINE

COLOR: Silt
BASECLOTH: Donegal
REPEAT: 27" x 24.9"
DIRECTION: UTR



COLOR: Oscuro



SAANVI

COLOR: Lago
BASECLOTH: Trapper
REPEAT: 18" x 18"
DIRECTION: UTR



COLOR: Fossil



COLOR: Cinder

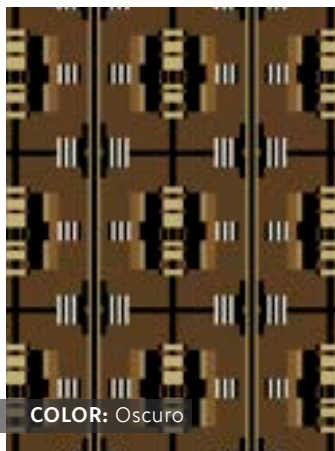


COLOR: Oscuro



STANZA

COLOR: Fig
BASECLOTH: Medici & Mohair
REPEAT: 3" x 3"
DIRECTION: UTR



COLOR: Oscuro



COLOR: Bowery



COLOR: Silt





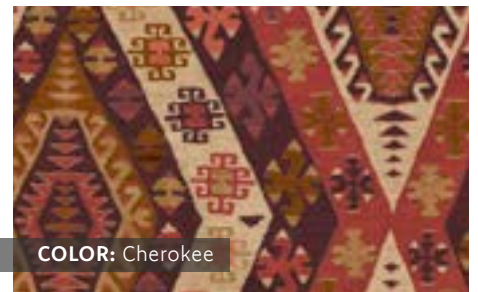
CONCETTA

COLOR: Silt

BASECLOTH: Donegal

REPEAT: 27" x 20.6"

DIRECTION: UTR



COLOR: Cherokee



COLOR: Clary Sage



COLOR: Smudge





NANDRA

COLOR: Night Sky
BASECLOTH: Sackcloth
REPEAT: 9" x 9.2"
DIRECTION: UTR



GRENANITE

COLOR: Bowers Blue
BASECLOTH: Luna
REPEAT: 27" x 18"
DIRECTION: UTR

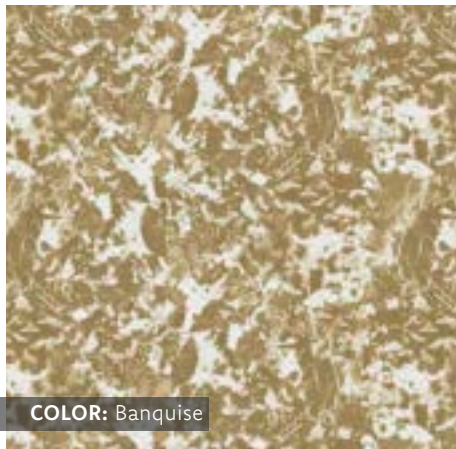


JARAWA

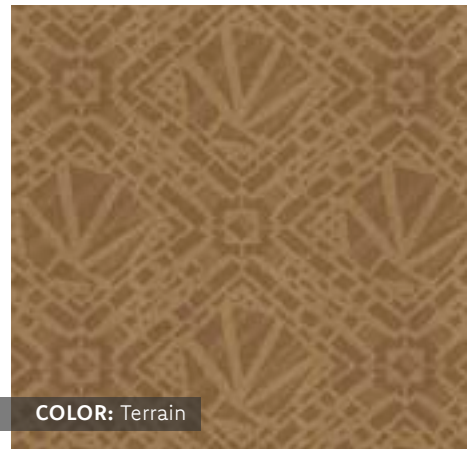
COLOR: Black Tan
BASECLOTH: Ostrich
REPEAT: 9" x 7.8"
DIRECTION: UTR



COLOR: Oscuro



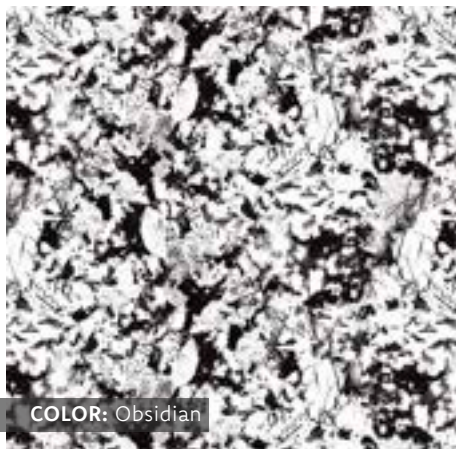
COLOR: Banquise



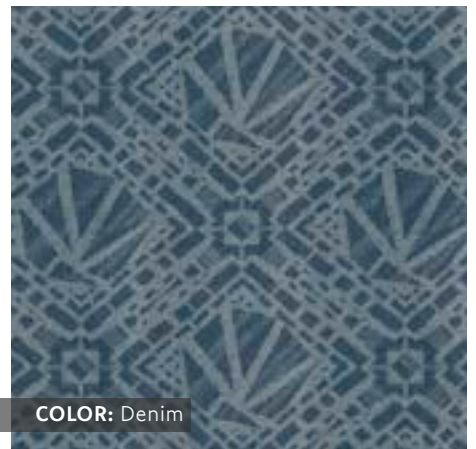
COLOR: Terrain



COLOR: Cinder



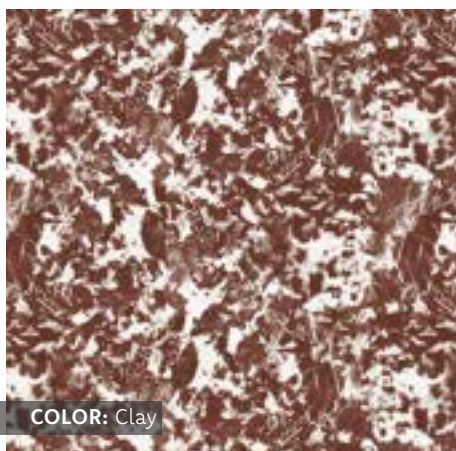
COLOR: Obsidian



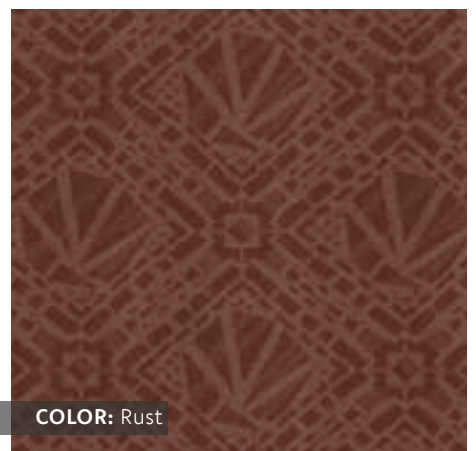
COLOR: Denim



COLOR: Fig



COLOR: Clay



COLOR: Rust



TREE OF DERAIN

COLOR: Rust
BASECLOTH: Medici
REPEAT: 18" x 26.3"
DIRECTION: UTR



COLOR: Banquise



COLOR: Oscuro



COLOR: Denim



COLOR: Cherokee



IZEL

COLOR: Banquise
BASECLOTH: Donegal
REPEAT: 13.5" x 13.1"
DIRECTION: UTR





PAPYRIFERA

COLOR: Fossil
BASECLOTH: Donegal & Pelle
REPEAT: 27" x 27"
DIRECTION: UTR



COLOR: Biome



COLOR: Clary Sage



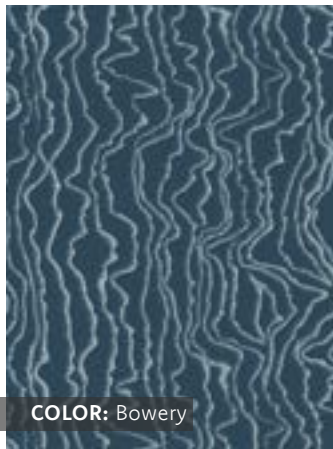
COLOR: Cinder



COLOR: Calcite Smudge



COLOR: Smudge



COLOR: Bowery



COLOR: Fig

biophilic injections



art deco revival

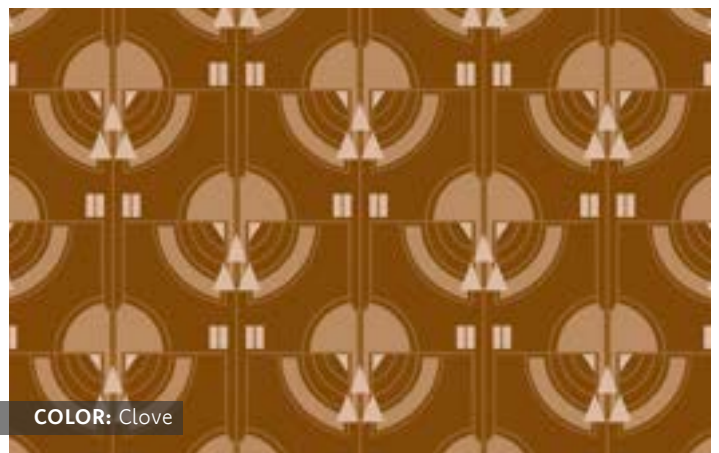


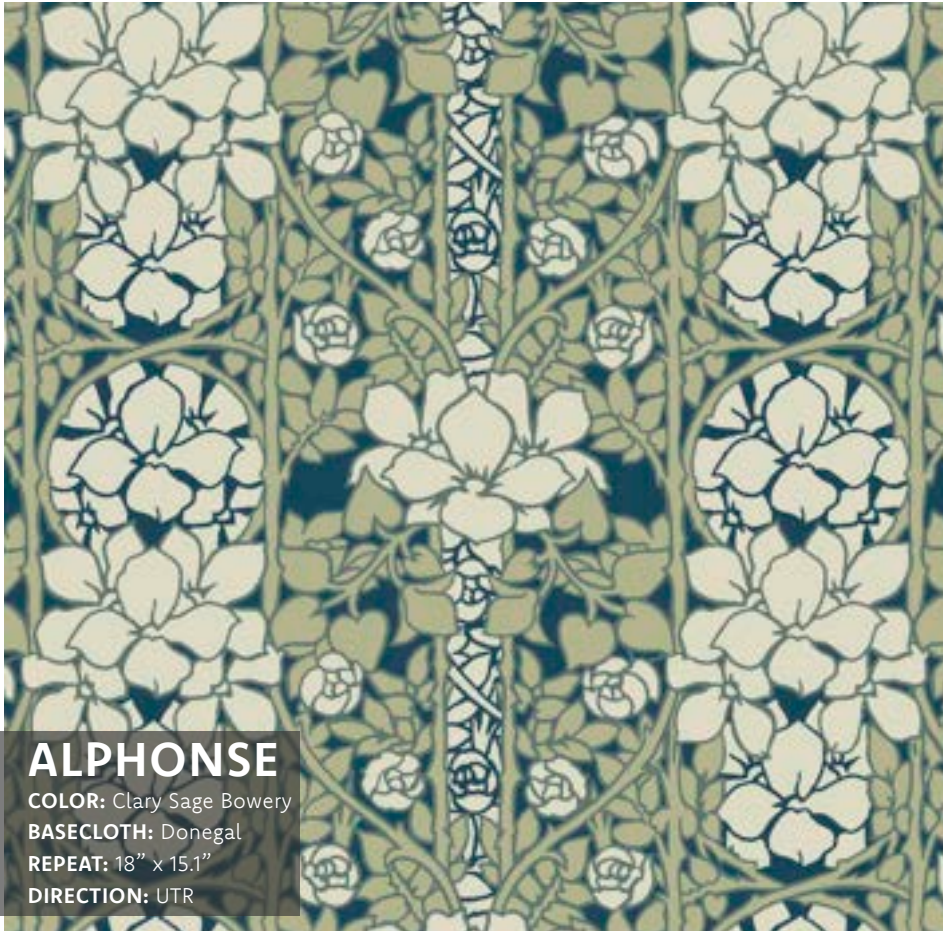
arched elements





MODERNISMO



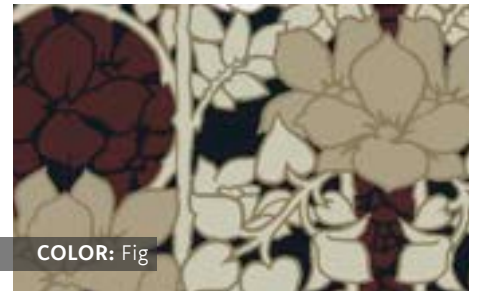


ALPHONSE

COLOR: Clary Sage Bowery
BASECLOTH: Donegal
REPEAT: 18" x 15.1"
DIRECTION: UTR



COLOR: Clove



COLOR: Fig



COLOR: Banquise



MEJA

COLOR: Clary Sage
BASECLOTH: Raffia
REPEAT: 13.5" x 13.48"
DIRECTION: UTR



COLOR: Clove



COLOR: Fig



COLOR: Lago Clove

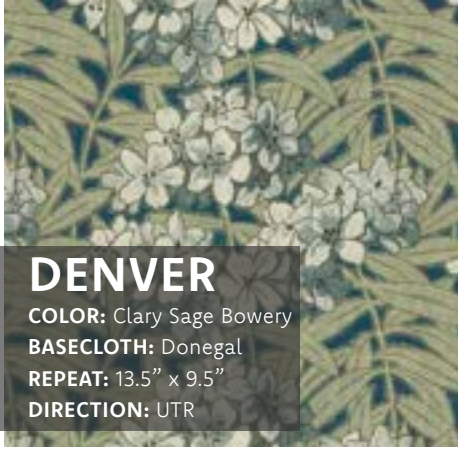


COLOR: Banquise



COLOR: Lago





DENVER

COLOR: Clary Sage Bowery
BASECLOTH: Donegal
REPEAT: 13.5" x 9.5"
DIRECTION: UTR



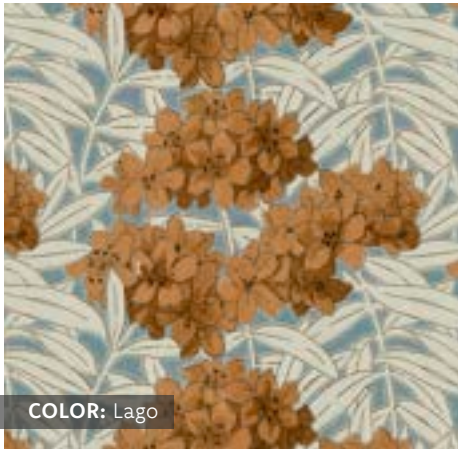
GRETA

COLOR: Clary Sage
BASECLOTH: Springs White
REPEAT: 13.5" x 9.7"
DIRECTION: UTR

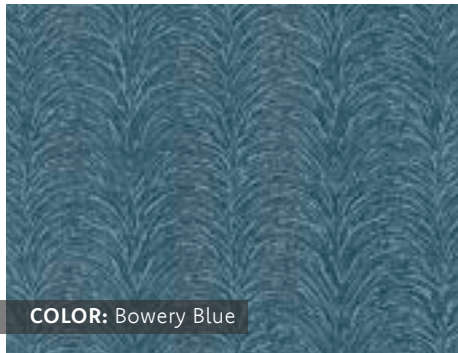


ELSIE

COLOR: Clary Sage
BASECLOTH: Medici
REPEAT: 9" x 10.1"
DIRECTION: UTR



COLOR: Lago



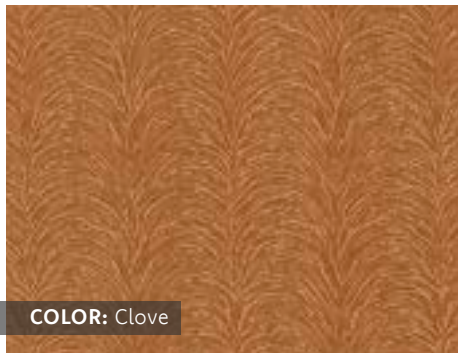
COLOR: Bowery Blue



COLOR: Lago



COLOR: Fig



COLOR: Clove



COLOR: Fig



COLOR: Banquise



COLOR: Fig



COLOR: Fossil



COLOR: Taupe



ENREJADO

COLOR: Clary Sage Bowery
BASECLOTH: Sackcloth
REPEAT: 4.5" x 6.4"
DIRECTION: UTR



NANTES

COLOR: Clary Sage
BASECLOTH: Pelle
REPEAT: 18" x 16.7"
DIRECTION: UTR



KEYA

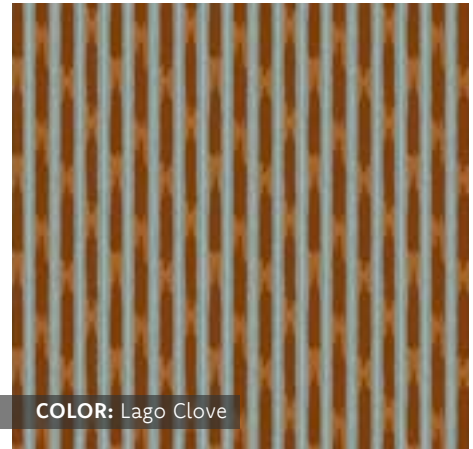
COLOR: Clary Sage Bowery
BASECLOTH: Ostrich
REPEAT: 1.3" x 1.3"
DIRECTION: UTR



COLOR: Lago



COLOR: Lago



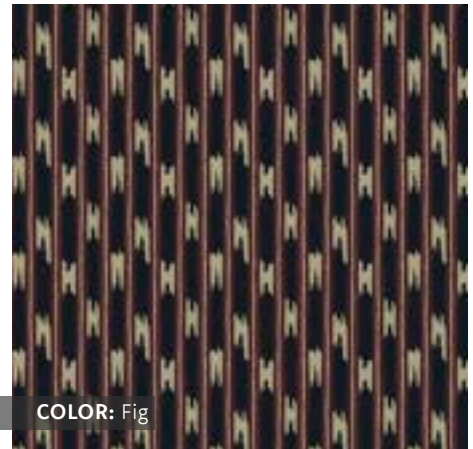
COLOR: Lago Clove



COLOR: Fig



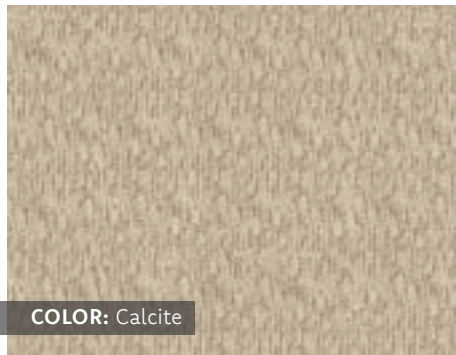
COLOR: Silt



COLOR: Fig



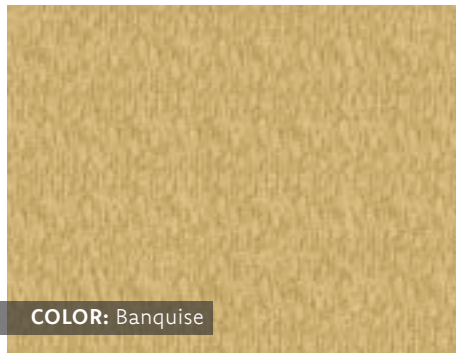
COLOR: Banquise



COLOR: Calcite



COLOR: Banquise



COLOR: Banquise







OUTDOOR SUBSTRATES



AWNING

CONTENT: 100% POLYESTER
WIDTH: 59"
PRINTABLE WIDTH: 57"
WEIGHT: 8.25 OZ/YD² (278 GSM)
ABRASION: GRADE 3 @ 50,000+ WYZENBEEK
CROCKING: 4 - DRY; 3 - WET
FLAMMABILITY: CAL TB 117 — PASS
LIGHTFASTNESS: CLASS 3 FOR 1.2K+ HOURS
CLEANING CODE: WS
CARE INSTRUCTIONS: Spot clean with water and mild detergent. Blot the stain gently with a cloth dampened with this solution. Remove any residual foam or suds by repeating the procedure with water only.



CHARLOTTE

CONTENT: 100% POLYESTER
WIDTH: 56"
PRINTABLE WIDTH: 54"
WEIGHT: 7.50 OZ/YD² (254 GSM)
ABRASION: GRADE 3 @ 60,000+ WYZENBEEK
CROCKING: 4 - DRY; 3 - WET
FLAMMABILITY: CAL TB 117 — PASS
LIGHTFASTNESS: CLASS 3 FOR 1.2K+ HOURS
CLEANING CODE: WS
CARE INSTRUCTIONS: Spot clean with water and mild detergent. Blot the stain gently with a cloth dampened with this solution. Remove any residual foam or suds by repeating the procedure with water only.



ECO CANVAS

CONTENT: 100% POLYESTER
WIDTH: 60"
PRINTABLE WIDTH: 58"
WEIGHT: 7.25 OZ/YD² (244 GSM)
ABRASION: GRADE 4 @ 50,000+ WYZENBEEK
CROCKING: 4 - DRY; 3 - WET
FLAMMABILITY: CAL TB 117 — PASS
LIGHTFASTNESS: CLASS 3 FOR 1.2K+ HOURS
CLEANING CODE: WS
CARE INSTRUCTIONS: Spot clean with water and mild detergent. Blot the stain gently with a cloth dampened with this solution. Remove any residual foam or suds by repeating the procedure with water only.



HEAVY LINEN

CONTENT: 100% POLYESTER
WIDTH: 56"
PRINTABLE WIDTH: 54"
WEIGHT: 7.50 OZ/YD² (255 GSM)
ABRASION: GRADE 3 @ 50,000+ WYZENBEEK
CROCKING: 4 - DRY; 3 - WET
FLAMMABILITY: CAL TB 117 — PASS
LIGHTFASTNESS: CLASS 3 FOR 1.2K+ HOURS
CLEANING CODE: WS
CARE INSTRUCTIONS: Spot clean with water and mild detergent. Blot the stain gently with a cloth dampened with this solution. Remove any residual foam or suds by repeating the procedure with water only.



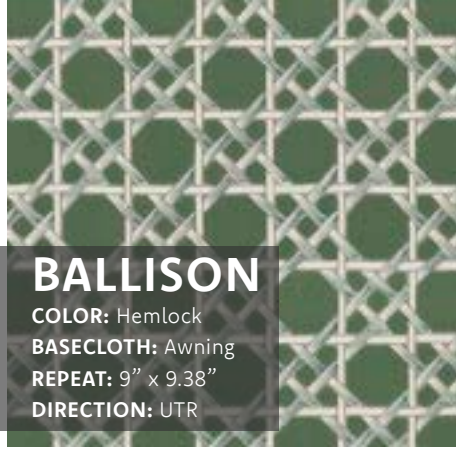
RAFFIA

CONTENT: 100% POLYESTER
WIDTH: 56"
PRINTABLE WIDTH: 54"
WEIGHT: 8 OZ/YD² (271 GSM)
ABRASION: GRADE 3 @ 50,000+ WYZENBEEK
CROCKING: 4 - DRY; 3 - WET
FLAMMABILITY: CAL TB 117 — PASS
LIGHTFASTNESS: CLASS 3 FOR 1.2K+ HOURS
CLEANING CODE: WS
CARE INSTRUCTIONS: Spot clean with water and mild detergent. Blot the stain gently with a cloth dampened with this solution. Remove any residual foam or suds by repeating the procedure with water only.



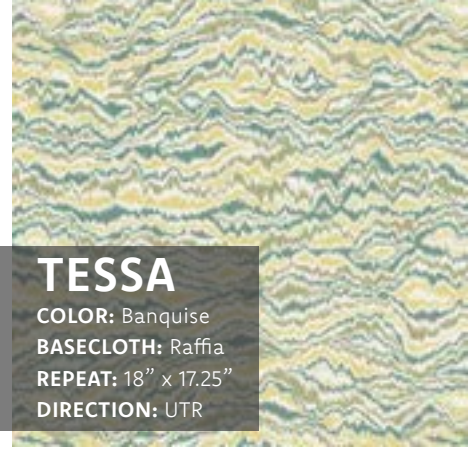
PRADO

COLOR: Lago
BASECLOTH: Charlotte
REPEAT: 18" x 30.41"
DIRECTION: UTR



BALLISON

COLOR: Hemlock
BASECLOTH: Awning
REPEAT: 9" x 9.38"
DIRECTION: UTR



TESSA

COLOR: Banquise
BASECLOTH: Raffia
REPEAT: 18" x 17.25"
DIRECTION: UTR



COLOR: Cadmium



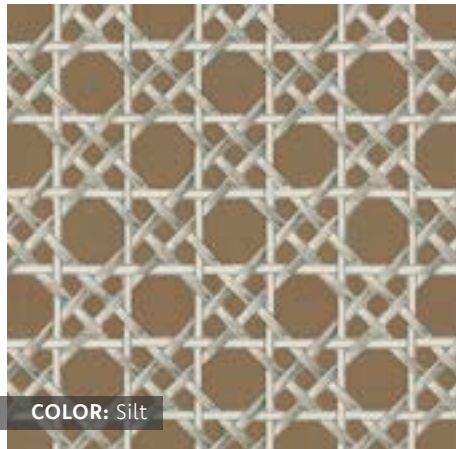
COLOR: Plumage



COLOR: Lake Placid



COLOR: Calcite



COLOR: Silt



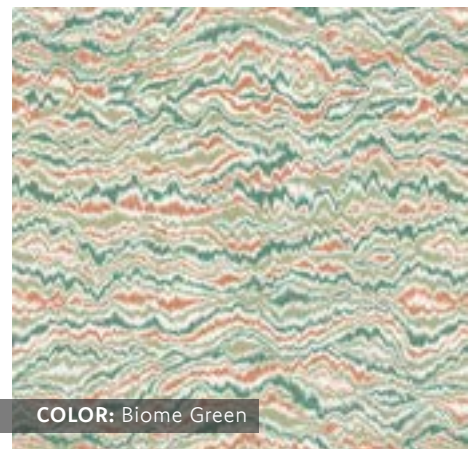
COLOR: Silt



COLOR: Fig



COLOR: Fig



COLOR: Biome Green





SELVIA

COLOR: Oscuro
BASECLOTH: Heavy Linen
REPEAT: 27" x 25.06"
DIRECTION: UTR



COLOR: Oscuro

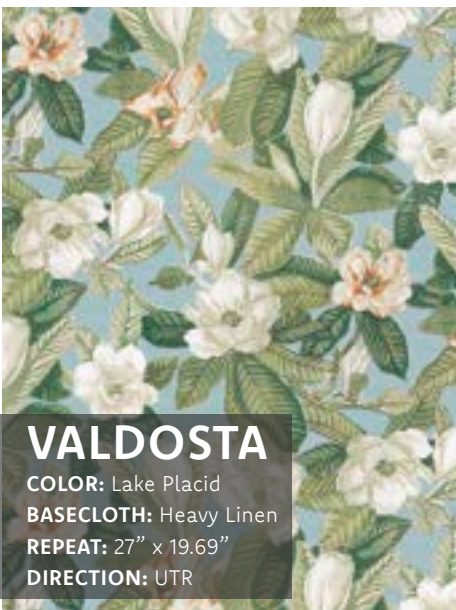


LAFETTE

COLOR: Mercer
BASECLOTH: Eco Canvas
REPEAT: 27" x 28.07"
DIRECTION: UTR



COLOR: Julep



VALDOSTA

COLOR: Lake Placid
BASECLOTH: Heavy Linen
REPEAT: 27" x 19.69"
DIRECTION: UTR




COLOR: Fossil



COLOR: Julep





For general inquiries, please contact
DecorativeFabrics@springscreative.com or for more
information, visit our website springscreative.com

For all design inquiries, please contact

ASHLYN BECK

Design Director

Ashlyn.Beck@springscreative.com

O - 803.324.6994

CATHY VALENT

Vice President Sales Special Accounts

Cathy.Valent@springscreative.com

O - 803.324.6818

C - 336.899.6419

SHARON BEVIER

Sales Representative—Southwest

Sharon.Bevier@springscreative.com

C - 972.342.6188

MARCI COHEN

Sales Representative—Northeast

Marci.Cohen@springscreative.com

O - 803.324.6475

C - 917.941.4240

For all Baxter Mill Archive inquiries, please contact

KATHY PHILLIPS

Chief Curator

Kathy.Phillips@springscreative.com

O - 803.324.6402

C - 803.367.1052



for more information, visit springscreative.com