



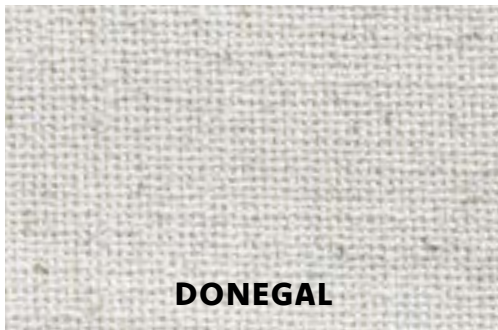
INTERWOVEN™

Spring 2023

SPRINGS | home
CREATIVE

OUR SUBSTRATES

Springs Creative offers a variety of substrates curated for use in upholstery, bedding and window treatments. Our substrates are sourced from around the world and can be digitally printed for use in the residential or hospitality markets.



DONEGAL

CONTENT: 92% POLYESTER/8% LINEN
WIDTH: 56"
PRINTABLE WIDTH: 54"
WEIGHT: 14.56 OZ/YD² (491 GSM)
ABRASION: GRADE 5 @ 30,000+ WYZENBEEK
CROCKING: 4 - DRY; 4 - WET
FLAMMABILITY: CAL TB 117 — PASS
LIGHTFASTNESS: CLASS 4 FOR 40 HOURS
CLEANING CODE: S
CARE INSTRUCTIONS: Spot clean only with water-free dry-cleaning solvent.



CHARLOTTE

CONTENT: 100% POLYESTER
WIDTH: 57"
PRINTABLE WIDTH: 55"
WEIGHT: 6.88 OZ/YD² (233 GSM)
ABRASION: GRADE 3 @ 50,000+ WYZENBEEK
CROCKING: 4 - DRY; 3 - WET
FLAMMABILITY: CAL TB 117 — PASS
LIGHTFASTNESS: CLASS 4 FOR 40 HOURS
CLEANING CODE: WS
CARE INSTRUCTIONS: Spot clean with water and mild detergent. Blot the stain gently with a cloth dampened with this solution. Remove any residual foam or suds by repeating the procedure with water only.



FINE SATEEN

CONTENT: 100% COTTON
WIDTH: 58"
PRINTABLE WIDTH: 56"
WEIGHT: 4.72 OZ/YD² (160 GSM)
ABRASION: GRADE 3 @ 15,000+ WYZENBEEK
CROCKING: 4 - DRY; 3 - WET
FLAMMABILITY: CAL TB 117 — PASS
LIGHTFASTNESS: CLASS 4 FOR 40 HOURS
CLEANING CODE: WS
CARE INSTRUCTIONS: Spot clean with water and mild detergent. Blot the stain gently with a cloth dampened with this solution. Remove any residual foam or suds by repeating the procedure with water only.





HEAVY LINEN

CONTENT: 100% POLYESTER
WIDTH: 58"
PRINTABLE WIDTH: 56"
WEIGHT: 7.50 OZ/YD² (255 GSM)
ABRASION: GRADE 3 @ 40,000+ WYZENBEEK
CROCKING: 4 - DRY; 4 - WET
FLAMMABILITY: CAL TB 117 — PASS
LIGHTFASTNESS: CLASS 4 FOR 40 HOURS
CLEANING CODE: WS
CARE INSTRUCTIONS: Spot clean with water and mild detergent. Blot the stain gently with a cloth dampened with this solution. Remove any residual foam or suds by repeating the procedure with water only.



HI LO

CONTENT: 69% POLYESTER/28% LINEN/3% COTTON
WIDTH: 56"
PRINTABLE WIDTH: 54"
WEIGHT: 15.44 OZ/YD² (522 GSM)
ABRASION: GRADE 5 @ 30,000+ WYZENBEEK
CROCKING: 4 - DRY; 4 - WET
FLAMMABILITY: CAL TB 117 — PASS
LIGHTFASTNESS: CLASS 4 FOR 40 HOURS
CLEANING CODE: S
CARE INSTRUCTIONS: Spot clean only with water-free dry-cleaning solvent.



LEENANE

CONTENT: 97% COTTON/3% LINEN
WIDTH: 60"
PRINTABLE WIDTH: 58"
WEIGHT: 6.40 OZ/YD² (217 GSM)
ABRASION: GRADE 3 @ 30,000+ WYZENBEEK
CROCKING: 4 - DRY; 3 - WET
FLAMMABILITY: CAL TB 117 — PASS
LIGHTFASTNESS: CLASS 4 FOR 40 HOURS
CLEANING CODE: WS
CARE INSTRUCTIONS: Spot clean with water and mild detergent. Blot the stain gently with a cloth dampened with this solution. Remove any residual foam or suds by repeating the procedure with water only.



MEDICI

CONTENT: 100% POLYESTER
WIDTH: 57"
PRINTABLE WIDTH: 55"
WEIGHT: 8.32 OZ/YD² (282 GSM)
ABRASION: GRADE 3 @ 40,000+ WYZENBEEK
CROCKING: 4 - DRY; 3 - WET
FLAMMABILITY: CAL TB 117 — PASS
LIGHTFASTNESS: CLASS 3 FOR 40 HOURS
CLEANING CODE: S
CARE INSTRUCTIONS: Spot clean only with water-free dry-cleaning solvent.



MOHAIR

CONTENT: 100% POLYESTER
WIDTH: 58"
PRINTABLE WIDTH: 56"
WEIGHT: 9.86 OZ/YD² (328 GSM)
ABRASION: GRADE 5 @ 30,000+ WYZENBEEK
CROCKING: 4 - DRY; 4 - WET
FLAMMABILITY: CAL TB 117 — PASS
LIGHTFASTNESS: CLASS 4 FOR 40 HOURS
CLEANING CODE: S
CARE INSTRUCTIONS: Spot clean only with water-free dry-cleaning solvent.



NEWPORT

CONTENT: 97% COTTON/3% LINEN
WIDTH: 60"
PRINTABLE WIDTH: 58"
WEIGHT: 7.44 OZ/YD² (252 GSM)
ABRASION: GRADE 3 @ 30,000+ WYZENBEEK
CROCKING: 4 - DRY; 3 - WET
FLAMMABILITY: CAL TB 117 — PASS
LIGHTFASTNESS: CLASS 4 FOR 40 HOURS
CLEANING CODE: WS
CARE INSTRUCTIONS: Spot clean with water and mild detergent. Blot the stain gently with a cloth dampened with this solution. Remove any residual foam or suds by repeating the procedure with water only.



OSTRICH

CONTENT: 100% POLYESTER
WIDTH: 58"
PRINTABLE WIDTH: 56"
WEIGHT: 9.92 OZ/YD² (336 GSM)
ABRASION: GRADE 5 @ 30,000+ WYZENBEEK
CROCKING: 4 - DRY; 4 - WET
FLAMMABILITY: CAL TB 117 — PASS
LIGHTFASTNESS: CLASS 4 FOR 40 HOURS
CLEANING CODE: WS
CARE INSTRUCTIONS: Spot clean with water and mild detergent. Blot the stain gently with a cloth dampened with this solution. Remove any residual foam or suds by repeating the procedure with water only.



PELLE

CONTENT: 100% POLYESTER
WIDTH: 56"
PRINTABLE WIDTH: 54"
WEIGHT: 7.08 OZ/YD² (240 GSM)
ABRASION: GRADE 3 @ 15,000+ WYZENBEEK
CROCKING: 4.5 - DRY; 4.5 - WET
FLAMMABILITY: CAL TB 117 — PASS
LIGHTFASTNESS: CLASS 4 FOR 40 HOURS
CLEANING CODE: S
CARE INSTRUCTIONS: Spot clean only with water-free dry-cleaning solvent.





RAFFIA

CONTENT: 100% POLYESTER
WIDTH: 56"
PRINTABLE WIDTH: 54"
WEIGHT: 6.7 OZ/YD² (227 GSM)
ABRASION: GRADE 4 @ 18,000+ WYZENBEEK
CROCKING: 4 - DRY; 3 - WET
FLAMMABILITY: CAL TB 117 — PASS
LIGHTFASTNESS: CLASS 4 FOR 40 HOURS
CLEANING CODE: WS
CARE INSTRUCTIONS: Spot clean with water and mild detergent. Blot the stain gently with a cloth dampened with this solution. Remove any residual foam or suds by repeating the procedure with water only.



SPRINGS WHITE

CONTENT: 100% POLYESTER
WIDTH: 57"
PRINTABLE WIDTH: 55"
WEIGHT: 10.32 OZ/YD² (349 GSM)
ABRASION: GRADE 5 @ 30,000+ WYZENBEEK
CROCKING: 4 - DRY; 4 - WET
FLAMMABILITY: CAL TB 117 — PASS
LIGHTFASTNESS: CLASS 4 FOR 40 HOURS
CLEANING CODE: S
CARE INSTRUCTIONS: Spot clean only with water-free dry-cleaning solvent.



TRAPPER

CONTENT: 100% POLYESTER
WIDTH: 58"
PRINTABLE WIDTH: 56"
WEIGHT: 9.76 OZ/YD² (331 GSM)
ABRASION: GRADE 5 @ 30,000+ WYZENBEEK
CROCKING: 4 - DRY; 5 - WET
FLAMMABILITY: CAL TB 117 — PASS
LIGHTFASTNESS: CLASS 4 FOR 40 HOURS
CLEANING CODE: S
CARE INSTRUCTIONS: Spot clean only with water-free dry-cleaning solvent.



cimento

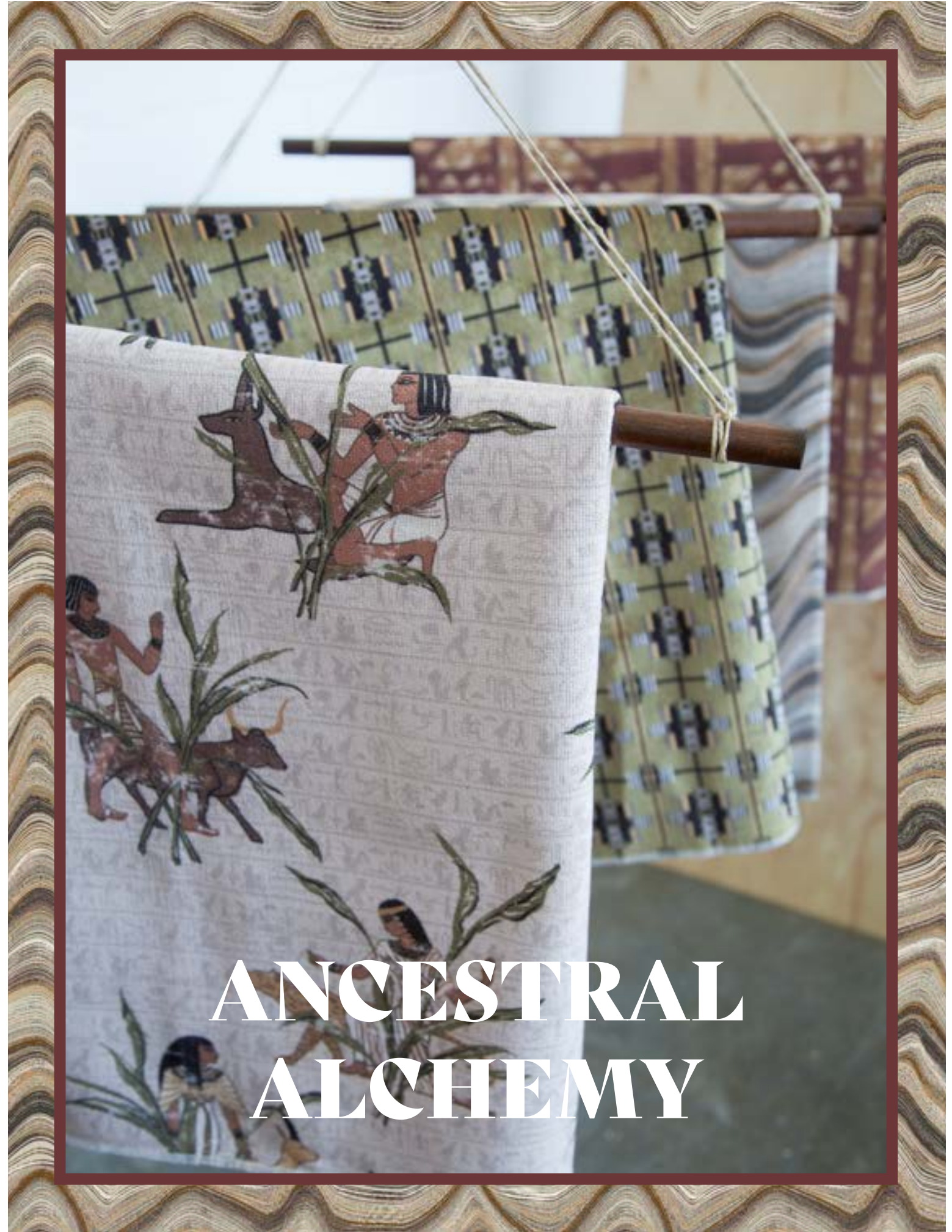


totemic inspiration



escapism





ANCESTRAL ALCHEMY



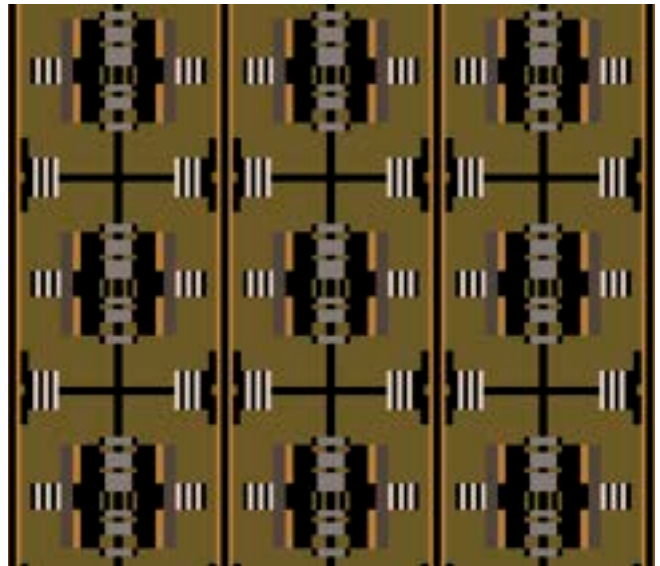
NILE

COLOR: Sunbaked
BASECLOTH: Donegal
REPEAT: 13.5" x 24"
DIRECTION: UTR



PRUNDIS

COLOR: Rojo
BASECLOTH: Mohair
REPEAT: 18" x 18"
DIRECTION: UTR



STANZA

COLOR: Greenery
BASECLOTH: Mohair
REPEAT: 3" x 3"
DIRECTION: UTR



FARO

COLOR: IndianSumClove
BASECLOTH: Donegal
REPEAT: 13.5" x 20.43"
DIRECTION: UTR





ARLES

COLOR: Clove
BASECLOTH: Mohair
REPEAT: 18" x 35.7"
DIRECTION: UTR



PRUNDIS

COLOR: Shipwreck
BASECLOTH: Mohair
REPEAT: 18" x 18"
DIRECTION: UTR



SAULT

COLOR: Oat
BASECLOTH: Medici
REPEAT: 5.4" x 7.473"
DIRECTION: UTR



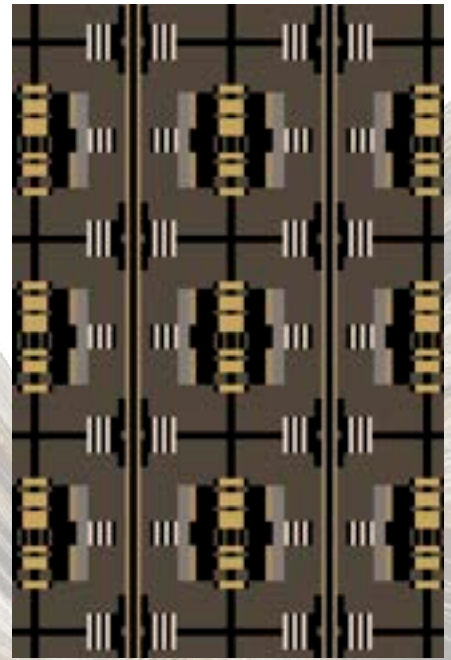
FARO

COLOR: Kohi
BASECLOTH: Donegal
REPEAT: 13.5" x 20.43"
DIRECTION: UTR



PEREGRINE

COLOR: Kohi
BASECLOTH: Kohi
REPEAT: 18" x 18"
DIRECTION: RR



STANZA

COLOR: Kohi
BASECLOTH: Mohair
REPEAT: 3" x 3"
DIRECTION: UTR



ARLES

COLOR: Sage
BASECLOTH: Mohair
REPEAT: 18" x 35.7"
DIRECTION: UTR



PIERRO

COLOR: Mummy
BASECLOTH: Donegal
REPEAT: 18" x 27"
DIRECTION: UTR





SIMKHAI

COLOR: Rust
BASECLOTH: Donegal
REPEAT: 4.5" x 6.34"
DIRECTION: UTR



MARIANA

COLOR: Desert
BASECLOTH: Donegal
REPEAT: 27" x 27"
DIRECTION: UTR



BEMBIEN

COLOR: Desert
BASECLOTH: Hi Lo
REPEAT: 9" x 7.507"
DIRECTION: UTR

NAUTICAL NARRATIVE





coastal vibe



crafted imperfections



block printing



ALMA

COLOR: Dried Flowers
BASECLOTH: Fine Sateen
REPEAT: 13.5" x 18"
DIRECTION: UTR



CHANLUU

COLOR: Indian Summer
BASECLOTH: Newport
REPEAT: 13.5" x 12.927"
DIRECTION: UTR



JOSAS

COLOR: Indian Summer
BASECLOTH: Fine Sateen
REPEAT: 27" x 24"
DIRECTION: UTR



OPHI

COLOR: Indian Summer
BASECLOTH: Newport
REPEAT: 13.5" x 9.857"
DIRECTION: UTR







JOSAS

COLOR: Lapis Lazuli
BASECLOTH: Fine Sateen
REPEAT: 27" x 24"
DIRECTION: UTR



BATAM

COLOR: Lapis
BASECLOTH: Donegal
REPEAT: 13.5" x 27"
DIRECTION: UTR



CHANLUU

COLOR: Lapis Lazuli
BASECLOTH: Newport
REPEAT: 13.5" x 12.927"
DIRECTION: UTR





ALMA

COLOR: Lapis
BASECLOTH: Fine Sateen
REPEAT: 13.5" x 18"
DIRECTION: UTR



OPHI

COLOR: Lapis Lazuli
BASECLOTH: Newport
REPEAT: 13.5" x 9.857"
DIRECTION: UTR



GANNI

COLOR: Sunbaked
BASECLOTH: Newport
REPEAT: 13.5" x 11.387"
DIRECTION: UTR



MARGIELA

COLOR: Albion
BASECLOTH: Newport
REPEAT: 2.2" x 2.827"
DIRECTION: UTR



LUQUILLO

COLOR: Greenery
BASECLOTH: Newport
REPEAT: 27" x 27"
DIRECTION: UTR



ALMA

COLOR: Reed
BASECLOTH: Fine Sateen
REPEAT: 13.5" x 18"
DIRECTION: UTR





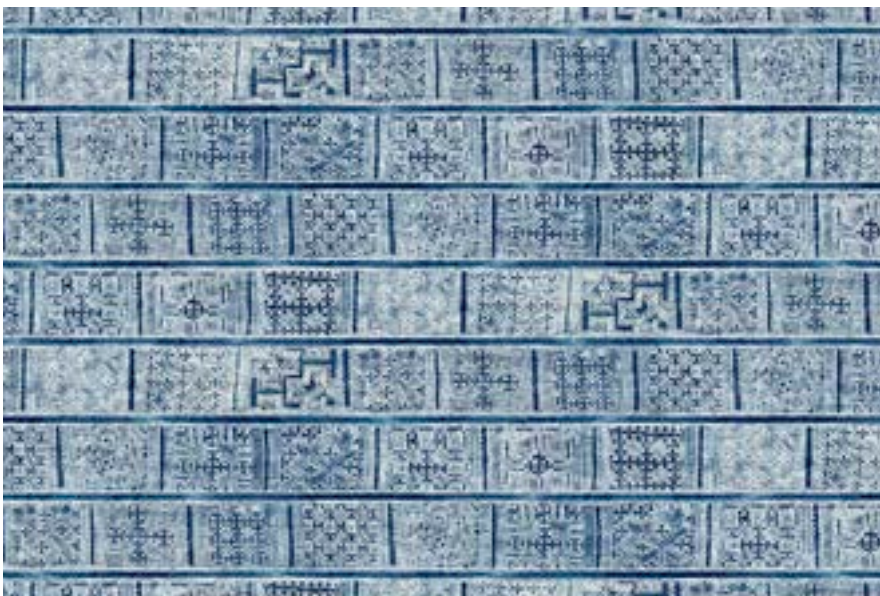
KOLMAR

COLOR: Tropedelic
BASECLOTH: Fine Sateen
REPEAT: 2.25" x 2.56"
DIRECTION: UTR



JOSAS

COLOR: Faintly
BASECLOTH: Fine Sateen
REPEAT: 27" x 24"
DIRECTION: UTR



MILO

COLOR: Indigo
BASECLOTH: Charlotte
REPEAT: 54" x 12.397"
DIRECTION: RR

inventive



micro-tiles



covetable classics



A collection of patterned textiles including a rug, pillows, and folded fabrics, with the word "REJUVENATION" overlaid in white serif font. The background features a large rug with a repeating zigzag pattern in shades of blue, grey, and orange. In the foreground, there are several pillows: one with a geometric pattern of circles and triangles in grey and white, and another with a bold, abstract design in white, grey, and orange. To the right, there are several folded pieces of fabric, including a solid grey one, a patterned one, and a striped one. A small potted plant with green succulent-like leaves is visible in the bottom right corner. The entire scene is framed by a thin brown border.

REJUVENATION





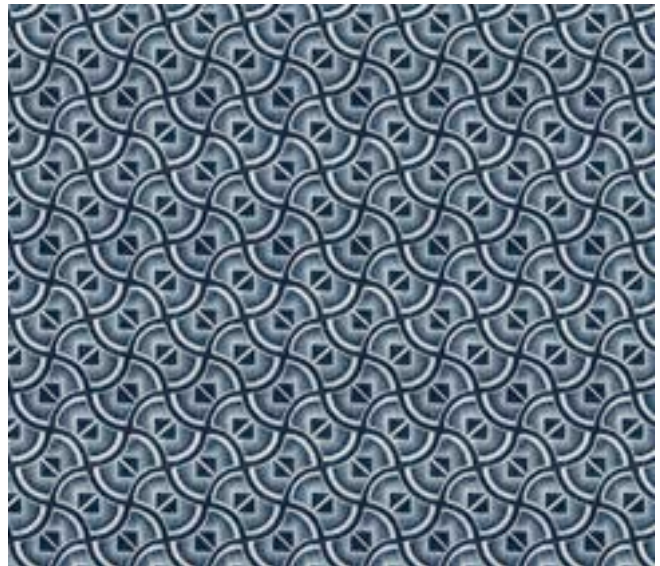
CHEVLOIT

COLOR: River
BASECLOTH: Donegal
REPEAT: 18" x 18"
DIRECTION: UTR



AVEDON

COLOR: Lapis
BASECLOTH: Donegal
REPEAT: 13.5" x 14.9"
DIRECTION: UTR



GISHI

COLOR: Lapis
BASECLOTH: Charlotte
REPEAT: 2.7" x 5.141"
DIRECTION: UTR



BINX

COLOR: Ashwood
BASECLOTH: Charlotte
REPEAT: 13.5" x 10.627"
DIRECTION: UTR



HAROM

COLOR: Gold
BASECLOTH: Springs White
REPEAT: 9" x 7.6"
DIRECTION: UTR



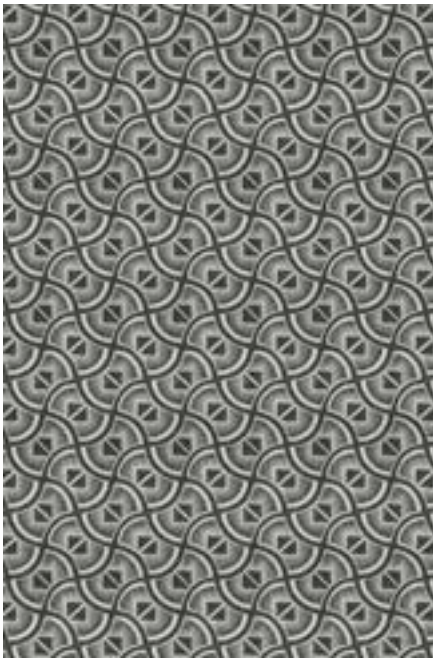
CHEVLOIT

COLOR: Fire Clay
BASECLOTH: Donegal
REPEAT: 18" x 18"
DIRECTION: UTR



GISHI

COLOR: Kohi
BASECLOTH: Charlotte
REPEAT: 2.7" x 5.141"
DIRECTION: UTR



GISHI

COLOR: Ebony
BASECLOTH: Charlotte
REPEAT: 2.7" x 5.141"
DIRECTION: UTR



AVEDON

COLOR: Ebony
BASECLOTH: Donegal
REPEAT: 13.5" x 14.9"
DIRECTION: UTR



BINX

COLOR: Otter
BASECLOTH: Charlotte
REPEAT: 13.5" x 10.627"
DIRECTION: UTR





HAROM

COLOR: Flax
BASECLOTH: Springs White
REPEAT: 9" x 7.6"
DIRECTION: UTR



DAEDALUS

COLOR: Reed
BASECLOTH: Charlotte
REPEAT: 13.5" x 11.5"
DIRECTION: UTR



KATAN

COLOR: Ashwood
BASECLOTH: Hi Lo
REPEAT: 3.4" x 3.5"
DIRECTION: UTR



CONOCERSE

romantic



dark woods



less quaint





ARBOR

COLOR: Greenery
BASECLOTH: Mohair
REPEAT: 6.75" x 12.1"
DIRECTION: UTR



VHAGER

COLOR: Reed
BASECLOTH: Medici
REPEAT: 18" x 18"
DIRECTION: UTR



CASSANDRA

COLOR: Otter Reed
BASECLOTH: Mohair
REPEAT: 27" x 17.5"
DIRECTION: UTR





XIRENA

COLOR: Albion
BASECLOTH: Charlotte
REPEAT: 5.45" x 1.597"
DIRECTION: RR



BATAM

COLOR: Restful Sage
BASECLOTH: Donegal
REPEAT: 13.5" x 27"
DIRECTION: UTR



ARBOR

COLOR: River
BASECLOTH: Mohair
REPEAT: 6.75" x 12.1"
DIRECTION: UTR







JUANA

COLOR: Basalt

BASECLOTH: Donegal

REPEAT: 13.5" x 24.85"

DIRECTION: UTR



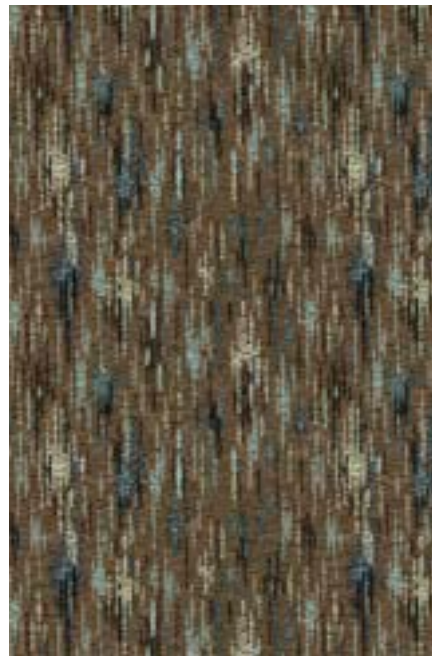
SWEENEY

COLOR: Sunbaked

BASECLOTH: Donegal

REPEAT: 6.75" x 7.247"

DIRECTION: UTR



MALONE

COLOR: Mummy

BASECLOTH: Ostrich

REPEAT: 6.75" x 6.813"

DIRECTION: UTR



XIRENA

COLOR: Sunbaked

BASECLOTH: Charlotte

REPEAT: 5.45" x 1.597"

DIRECTION: RR

intriguing abstracts

layers on layers



geometric volumes





**CREATIVE
RADICALISM**



REUEL

COLOR: Soulful
BASECLOTH: Medici
REPEAT: 18" x 18"
DIRECTION: UTR



SAULT

COLOR: Soulful
BASECLOTH: Medici
REPEAT: 5.4" x 7.473"
DIRECTION: UTR



KODIA

COLOR: Soulful
BASECLOTH: Trapper
REPEAT: 18" x 18"
DIRECTION: UTR





ARTEMIS

COLOR: Dried Flowers
BASECLOTH: Donegal
REPEAT: 18" x 21.935"
DIRECTION: UTR



HAWN

COLOR: Bosphorus
BASECLOTH: Mohair
REPEAT: 18" x 18"
DIRECTION: UTR



REUEL

COLOR: Mist
BASECLOTH: Medici
REPEAT: 18" x 18"
DIRECTION: UTR



FLOYD

COLOR: Mist
BASECLOTH: Hi Lo
REPEAT: 9" x 9"
DIRECTION: UTR



VEDA

COLOR: Kismet
BASECLOTH: Mohair
REPEAT: 18" x 27"
DIRECTION: UTR



NOMEL

COLOR: River
BASECLOTH: Donegal
REPEAT: 18" x 18"
DIRECTION: UTR



VEDA

COLOR: Bosphorus
BASECLOTH: Mohair
REPEAT: 18" x 27"
DIRECTION: UTR



CASTILLO

COLOR: Albion
BASECLOTH: Trapper
REPEAT: 18" x 24"
DIRECTION: UTR



ARTEMIS

COLOR: Basalt
BASECLOTH: Donegal
REPEAT: 18" x 21.935"
DIRECTION: UTR



KODIA

COLOR: Fire Clay
BASECLOTH: Trapper
REPEAT: 18" x 18"
DIRECTION: UTR



PLINTH

COLOR: Mink
BASECLOTH: Mohair
REPEAT: 27" x 37.243"
DIRECTION: UTR



NOMEL

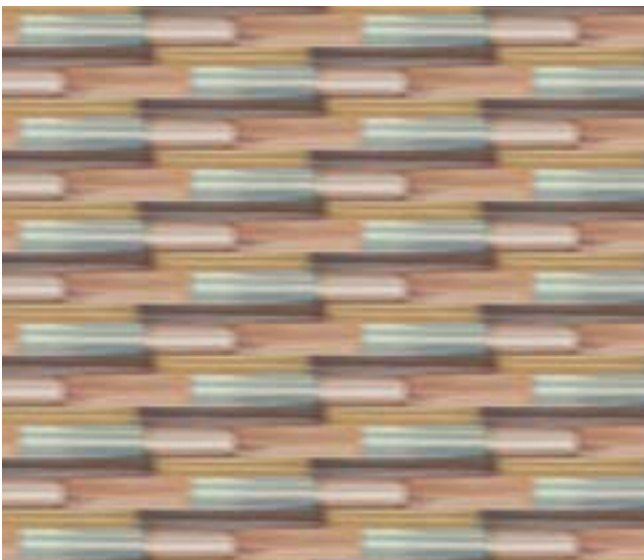
COLOR: Oat
BASECLOTH: Donegal
REPEAT: 18" x 18"
"DIRECTION: UTR





VEDA

COLOR: River
BASECLOTH: Mohair
REPEAT: 18" x 27"
DIRECTION: UTR



MELBOURNE

COLOR: Albion
BASECLOTH: Mohair
REPEAT: 9" x 2.7"
DIRECTION: RR



HAWN

COLOR: Sunbaked
BASECLOTH: Mohair
REPEAT: 18" x 18"
DIRECTION: UTR



CASTILLO

COLOR: Mummy
BASECLOTH: Trapper
REPEAT: 18" x 24"
DIRECTION: UTR

OUTDOOR SUBSTRATES

Springs Creative offers a variety of substrates curated for outdoor use. Our outdoor patterns are latex printed and finished with Springshield 2.0, a PFAs-Free soil and stain performance finish.



CHARLOTTE

CONTENT: 100% POLYESTER
WIDTH: 57"
PRINTABLE WIDTH: 55"
WEIGHT: 6.88 OZ/YD² (233 GSM)
ABRASION: GRADE 3 @ 60,000+ WYZENBEEK
CROCKING: 4.5 - DRY; 4.5 - WET
FLAMMABILITY: CAL TB 117 — PASS
LIGHTFASTNESS: CLASS 4 FOR 40 HOURS
CLEANING CODE: WS
CARE INSTRUCTIONS: Spot clean with water and mild detergent. Blot the stain gently with a cloth dampened with this solution. Remove any residual foam or suds by repeating the procedure with water only.



AWNING

CONTENT: 100% POLYESTER
WIDTH: 60"
PRINTABLE WIDTH: 58"
WEIGHT: 7.6 OZ/YD² (257.6 GSM)
ABRASION: GRADE 4 @ 50,000+ WYZENBEEK
CROCKING: 4 - DRY; 4 - WET
FLAMMABILITY: CAL TB 117 — PASS
LIGHTFASTNESS: CLASS 4 FOR 40 HOURS
CLEANING CODE: WS
CARE INSTRUCTIONS: Spot clean with water and mild detergent. Blot the stain gently with a cloth dampened with this solution. Remove any residual foam or suds by repeating the procedure with water only.



ECO CANVAS

CONTENT: 100% POLYESTER
WIDTH: 60"
PRINTABLE WIDTH: 58"
WEIGHT: 7.25 OZ/YD² (244 GSM)
ABRASION: GRADE 4 @ 40,000+ WYZENBEEK
CROCKING: 4 - DRY; 4 - WET
FLAMMABILITY: CAL TB 117 — PASS
LIGHTFASTNESS: CLASS 4 FOR 40 HOURS
CLEANING CODE: WS
CARE INSTRUCTIONS: Spot clean with water and mild detergent. Blot the stain gently with a cloth dampened with this solution. Remove any residual foam or suds by repeating the procedure with water only.





HEAVY LINEN

CONTENT: 100% POLYESTER
WIDTH: 58"
PRINTABLE WIDTH: 56"
WEIGHT: 7.50 OZ/YD² (255 GSM)
ABRASION: GRADE 3 @ 40,000+ WYZENBEEK
CROCKING: 4 - DRY; 4 - WET
FLAMMABILITY: CAL TB 117 — PASS
LIGHTFASTNESS: CLASS 4 FOR 40 HOURS
CLEANING CODE: WS
CARE INSTRUCTIONS: Spot clean with water and mild detergent. Blot the stain gently with a cloth dampened with this solution. Remove any residual foam or suds by repeating the procedure with water only.



RAFFIA

CONTENT: 100%
WIDTH: 56"
PRINTABLE WIDTH: 54"
WEIGHT: 6.7 OZ/YD² (227 GSM)
ABRASION: GRADE 3 @ 30,000+ WYZENBEEK
CROCKING: 4 - DRY; 3 - WET
FLAMMABILITY: CAL TB 117 — PASS
LIGHTFASTNESS: CLASS 4 FOR 40 HOURS
CLEANING CODE: WS
CARE INSTRUCTIONS: Spot clean with water and mild detergent. Blot the stain gently with a cloth dampened with this solution. Remove any residual foam or suds by repeating the procedure with water only.





BORDADO

COLOR: Sol Rising
BASECLOTH: Awning
REPEAT: 13.5" x 13.5"
DIRECTION: UTR



FARO

COLOR: Sol Rising
BASECLOTH: Heavy Linen
REPEAT: 13.5" x 20.43"
DIRECTION: UTR



CHEVLOIT

COLOR: Lapis
BASECLOTH: Raffia
REPEAT: 18" x 18"
DIRECTION: UTR



VHAGER

COLOR: Greenery
BASECLOTH: Charlotte
REPEAT: 18" x 18"
DIRECTION: UTR



CASSANDRA

COLOR: Extraneous
BASECLOTH: Raffia
REPEAT: 27" x 17.5"
DIRECTION: UTR



BINX

COLOR: Fire Clay
BASECLOTH: Eco Canvas
REPEAT: 13.5" x 10.627"
DIRECTION: UTR





SAULT

COLOR: Albion
BASECLOTH: Awning
REPEAT: 5.4" x 7.473"
DIRECTION: UTR



ALMA

COLOR: River
BASECLOTH: Charlotte
REPEAT: 13.5" x 18"
DIRECTION: UTR



LUQUILLO

COLOR: Bosporous
BASECLOTH: Raffia
REPEAT: 27" x 27"
DIRECTION: UTR



KODIA

COLOR: Lucite
BASECLOTH: Eco Canvas
REPEAT: 18" x 18"
DIRECTION: UTR



BORDADO


COLOR: River
BASECLOTH: Awning
REPEAT: 13.5" x 13.5"
DIRECTION: UTR



FARO

COLOR: River
BASECLOTH: Heavy Linen
REPEAT: 13.5" x 20.43"
DIRECTION: UTR





For general inquiries, please contact
DecorativeFabrics@springscreative.com or for more
information, visit our website springscreative.com

For all Baxter Mill Archive inquiries, please contact

KATHY PHILLIPS

Chief Curator

Kathy.Phillips@springscreative.com

O - 803-324-6402

C - 803-367-1052

For all design inquiries, please contact

ASHLYN BECK

Design Director

Ashlyn.Beck@springscreative.com

O - 803-324-6994

CATHY VALENT

Vice President Sales Special Accounts

Cathy.Valent@springscreative.com

O - 803-324-6818

C - 336-899-6419

SHARON BEVIER

Sales Representative—Southwest

Sharon.Bevier@springscreative.com

C - 972-342-6188

MARCI COHEN

Sales Representative—Northeast

Marci.Cohen@springscreative.com

O - 803-324-6475

C - 917-941-4240

