



SHOWTIME 2021

SPRINGS CREATIVE | home

OUR SUBSTRATES



CHARLOTTE

Content: 100% POLYESTER
Width: 57"
Printable Width: 55"
Weight: 6.88 OZ/YD² (233 GSM)
Abrasion: GRADE 3 @ 60,000+ WYZENBEEK
Crocking: 4.5 - DRY; 4.5 - WET
Flammability: CAL TB 117 — PASS
Lightfastness: CLASS 4 FOR 40 HOURS
Cleaning Code: WS
Care Instructions: Spot clean with water and mild detergent. Blot the stain gently with a cloth dampened with this solution. Remove any residual foam or suds by repeating the procedure with water only.



DONEGAL

Content: 92% POLYESTER/8% LINEN
Width: 56"
Printable Width: 54"
Weight: 14.56 OZ/YD² (491 GSM)
Abrasion: GRADE 5 @ 30,000+ WYZENBEEK
Crocking: 4 - DRY; 4 - WET
Flammability: CAL TB 117 — PASS
Lightfastness: CLASS 4 FOR 40 HOURS
Cleaning Code: S
Care Instructions: Spot clean only with water-free dry-cleaning solvent.



MOHAIR

Content: 100% POLYESTER
Width: 58"
Printable Width: 56"
Weight: 9.86 OZ/YD² (328 GSM)
Abrasion: GRADE 5 @ 30,000+ WYZENBEEK
Crocking: 4 - DRY; 4 - WET
Flammability: CAL TB 117 — PASS
Lightfastness: CLASS 4 FOR 40 HOURS
Cleaning Code: S
Care Instructions: Spot clean only with water-free dry-cleaning solvent.



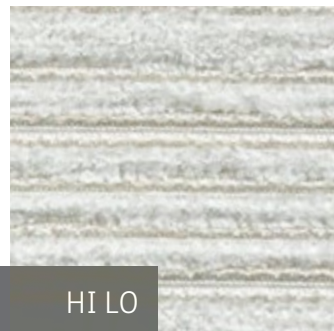
NEWPORT

Content: 97% COTTON/3% LINEN
Width: 60"
Printable Width: 58"
Weight: 7.44 OZ/YD² (252 GSM)
Abrasion: GRADE 4 @ 30,000+ WYZENBEEK
Crocking: 4 - DRY; 3 - WET
Flammability: CAL TB 117 — PASS
Lightfastness: CLASS 4 FOR 40 HOURS
Cleaning Code: WS
Care Instructions: Spot clean with water and mild detergent. Blot the stain gently with a cloth dampened with this solution. Remove any residual foam or suds by repeating the procedure with water only.



HEAVY LINEN

Content: 100% POLYESTER
Width: 58"
Printable Width: 56"
Weight: 7.54 OZ/YD² (255 GSM)
Abrasion: GRADE 4 @ 30,000+ WYZENBEEK
Crocking: 4 - DRY; 4 - WET
Flammability: NFPA 701 — PASS; CAL TB 117 — PASS
Lightfastness: CLASS 4 FOR 40 HOURS
Cleaning Code: WS
Care Instructions: Spot Clean with water and mild detergent. Blot the stain gently with a cloth dampened with this solution. Remove any residual foam or suds by repeating the procedure with water only.



HI LO

Content: 69% POLYESTER / 28% RAYON / 3% COTTON
Width: 56"
Printable Width: 54"
Weight: 15.44 OZ/YD² (522 GSM)
Abrasion: GRADE 5 @ 30,000+ WYZENBEEK
Crocking: 4 - DRY; 4 - WET
Flammability: CAL TB 117 — PASS
Lightfastness: CLASS 4 FOR 40 HOURS
Cleaning Code: WS
Care Instructions: Spot clean only with water-free dry-cleaning solvent.



OSTRICH

Content: 100% POLYESTER
Width: 58"
Printable Width: 56"
Weight: 9.92 OZ/YD² (336 GSM)
Abrasion: GRADE 5 @ 30,000+ WYZENBEEK
Crocking: 4 - DRY; 4 - WET
Flammability: CAL TB 117 — PASS
Lightfastness: CLASS 4 FOR 40 HOURS
Cleaning Code: WS
Care Instructions: Spot Clean with water and mild detergent. Blot the stain gently with a cloth dampened with this solution. Remove any residual foam or suds by repeating the procedure with water only.



RAFFIA

Content: 100% POLYESTER
Width: 56"
Printable Width: 54"
Weight: 8 OZ/YD² (271 GSM)
Abrasion: GRADE 4 @ 18,000+ WYZENBEEK
Crocking: 4 - DRY; 3 - WET
Flammability: CAL TB 117 — PASS
Lightfastness: CLASS 4 FOR 40 HOURS
Cleaning Code: W
Care Instructions: Spot clean with water and mild detergent. Blot the stain gently with a cloth dampened with this solution. Remove any residual foam or suds by repeating the procedure with water only.





SACKCLOTH

Content: 100% POLYESTER
Width: 56"
Printable Width: 54"
Weight: 16.32 OZ/YD² (552 GSM)
Abrasion: GRADE 5 @ 30,000+ WYZENBEEK
Crocking: 4 - DRY; 4 - WET
Flammability: CAL TB 117 — PASS
Lightfastness: CLASS 4 FOR 40 HOURS
Cleaning Code: S
Care Instructions: Spot clean only with water-free dry cleaning solvent.



SEAGRASS

Content: 100% POLYESTER
Width: 56"
Printable Width: 55"
Weight: 13.52 OZ/YD² (458 GSM)
Abrasion: GRADE 4 @ 30,000+ WYZENBEEK
Crocking: 4 - DRY; 4 - WET
Flammability: CAL TB 117 — PASS
Lightfastness: CLASS 4 FOR 40 HOURS
Cleaning Code: S
Care Instructions: Spot clean only with water-free dry-cleaning solvent.



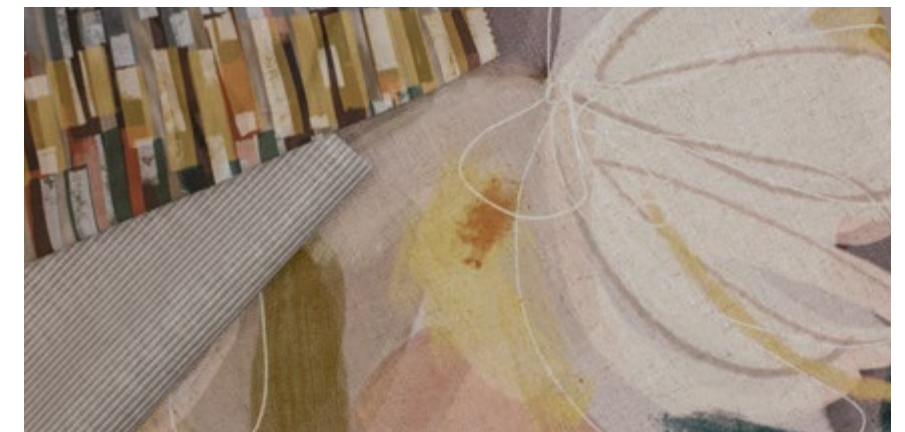
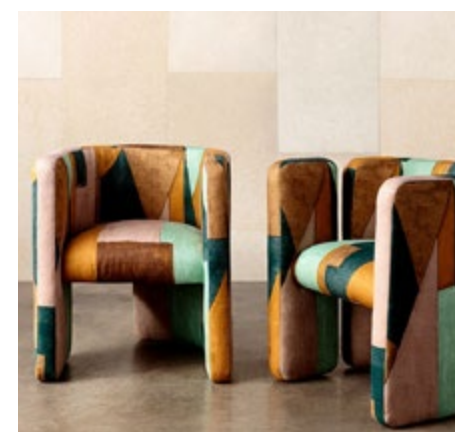
SPRINGS WHITE

Content: 100% POLYESTER
Width: 57"
Printable Width: 55"
Weight: 10.32 OZ/YD² (349 GSM)
Abrasion: GRADE 5 @ 30,000+ WYZENBEEK
Crocking: 4 - DRY; 4 - WET
Flammability: CAL TB 117 — PASS
Lightfastness: CLASS 4 FOR 40 HOURS
Cleaning Code: S
Care Instructions: Spot clean only with water-free dry-cleaning solvent.



TRAPPER

Content: 100% POLYESTER
Width: 58"
Printable Width: 56"
Weight: 9.76 OZ/YD² (331 GSM)
Abrasion: GRADE 5 @ 30,000+ WYZENBEEK
Crocking: 4 - DRY; 4 - WET
Flammability: CAL TB 117 — PASS
Lightfastness: CLASS 4 FOR 40 HOURS
Cleaning Code: S
Care Instructions: Spot clean only with water-free dry-cleaning solvent.



ABSTRACTIONS





AMBRE

Color: Archetype
Base Fabric: Trapper
Content: 100% Polyester
Width: 56" Abrasion: >30k Grade 5
Flammability: Cal 117, UFAC1
Cleaning: S
Repeat: 27" x 27"
Fabric Origin: Printed in USA



AMBRE

Color: Coral Light
Base Fabric: Trapper
Content: 100% Polyester
Width: 56" Abrasion: >30k Grade 5
Flammability: Cal 117, UFAC1
Cleaning: S
Repeat: 27" x 27"
Fabric Origin: Printed in USA



CAMU

Color: Ceramic
Base Fabric: Newport
Content: 97% Cotton, 3% Linen
Width: 60" Abrasion: >30k Grade 4
Flammability: Cal 117, UFAC1
Cleaning: WS
Repeat: 18" x 10.91"
Fabric Origin: Printed in USA



CAMU

Color: Credenza
Base Fabric: Newport
Content: 97% Cotton, 3% Linen
Width: 60" Abrasion: >30k Grade 4
Flammability: Cal 117, UFAC1
Cleaning: WS
Repeat: 18" x 10.91"
Fabric Origin: Printed in USA



AMBRE

Color: Leek
Base Fabric: Trapper
Content: 100% Polyester
Width: 56" Abrasion: >30k Grade 5
Flammability: Cal 117, UFAC1
Cleaning: S
Repeat: 27" x 27"
Fabric Origin: Printed in USA



AMBRE

Color: Moonlite
Base Fabric: Trapper
Content: 100% Polyester
Width: 56" Abrasion: >30k Grade 5
Flammability: Cal 117, UFAC1
Cleaning: S
Repeat: 27" x 27"
Fabric Origin: Printed in USA



CAMU

Color: Fendi
Base Fabric: Newport
Content: 97% Cotton, 3% Linen
Width: 60" Abrasion: >30k Grade 4
Flammability: Cal 117, UFAC1
Cleaning: WS
Repeat: 18" x 10.91"
Fabric Origin: Printed in USA



CAMU

Color: Natural
Base Fabric: Newport
Content: 97% Cotton, 3% Linen
Width: 60" Abrasion: >30k Grade 4
Flammability: Cal 117, UFAC1
Cleaning: WS
Repeat: 18" x 10.91"
Fabric Origin: Printed in USA





CASSIS

Color: Atmosphere
Base Fabric: Donegal
Content: 92% Polyester, 8% Linen
Width: 56" Abrasion: >30k Grade 5
Flammability: Cal 117, UFAC1
Cleaning: S
Repeat: 27" x 21.133"
Fabric Origin: Printed in USA



CASSIS

Color: Rust
Base Fabric: Donegal
Content: 92% Polyester, 8% Linen
Width: 56" Abrasion: >30k Grade 5
Flammability: Cal 117, UFAC1
Cleaning: S
Repeat: 27" x 21.133"
Fabric Origin: Printed in USA



LINDS

Color: Atmosphere
Base Fabric: Donegal
Content: 92% Polyester, 8% Linen
Width: 56" Abrasion: >30k Grade 5
Flammability: Cal 117, UFAC1
Cleaning: S
Repeat: 27" x 14.443"
Fabric Origin: Printed in USA



LINDS

Color: Credenza
Base Fabric: Donegal
Content: 92% Polyester, 8% Linen
Width: 56" Abrasion: >30k Grade 5
Flammability: Cal 117, UFAC1
Cleaning: S
Repeat: 27" x 14.443"
Fabric Origin: Printed in USA



GALANTES

Color: Ether Sage
Base Fabric: Charlotte
Content: 100% Polyester
Width: 55" Abrasion: 60k+ Grade 3
Flammability: Cal 117, UFAC1
Cleaning: WS
Repeat: 27" x 27"
Fabric Origin: Printed in USA



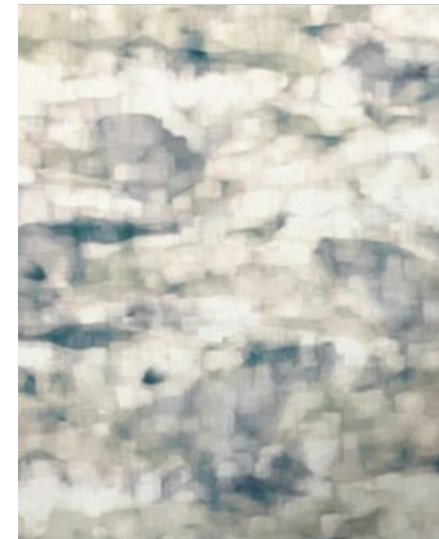
GALANTES

Color: Neutral
Base Fabric: Charlotte
Content: 100% Polyester
Width: 55" Abrasion: 60k+ Grade 3
Flammability: Cal 117, UFAC1
Cleaning: WS
Repeat: 27" x 27"
Fabric Origin: Printed in USA



GALANTES

Color: Vibe
Base Fabric: Charlotte
Content: 100% Polyester
Width: 55" Abrasion: 60k+ Grade 3
Flammability: Cal 117, UFAC1
Cleaning: WS
Repeat: 27" x 27"
Fabric Origin: Printed in USA



MYSTIC

Color: Ether Sage
Base Fabric: Charlotte
Content: 100% Polyester
Width: 55" Abrasion: 60k+ Grade 3
Flammability: Cal 117, UFAC1
Cleaning: WS
Repeat: 18" x 19.96"
Fabric Origin: Printed in USA



MYSTIC

Color: Neutral
Base Fabric: Charlotte
Content: 100% Polyester
Width: 55" Abrasion: 60k+ Grade 3
Flammability: Cal 117, UFAC1
Cleaning: WS
Repeat: 18" x 19.96"
Fabric Origin: Printed in USA



MYSTIC

Color: Vibe
Base Fabric: Charlotte
Content: 100% Polyester
Width: 55" Abrasion: 60k+ Grade 3
Flammability: Cal 117, UFAC1
Cleaning: WS
Repeat: 18" x 19.96"
Fabric Origin: Printed in USA





SUNBURY

Color: Ceramic
Base Fabric: Mohair
Content: 100% Polyester
Width: 58" Abrasion: >30k Grade 5
Flammability: Cal 117, UFAC1
Cleaning: S
Repeat: 18" x 26.33"
Fabric Origin: Printed in USA



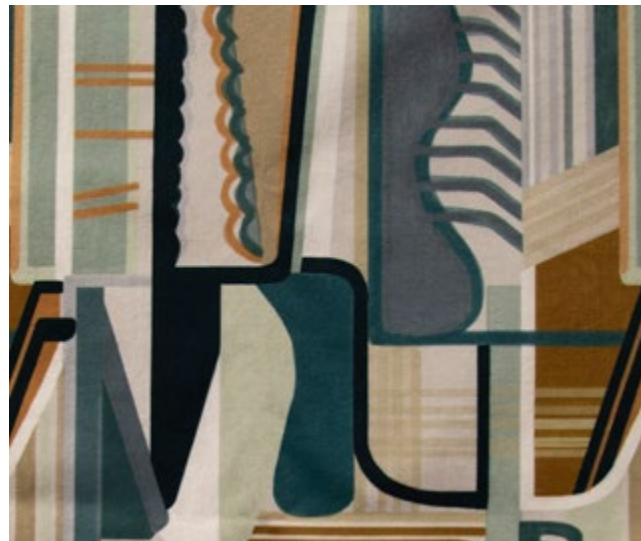
SUNBURY

Color: Coal
Base Fabric: Mohair
Content: 100% Polyester
Width: 58" Abrasion: >30k Grade 5
Flammability: Cal 117, UFAC1
Cleaning: S
Repeat: 18" x 26.33"
Fabric Origin: Printed in USA



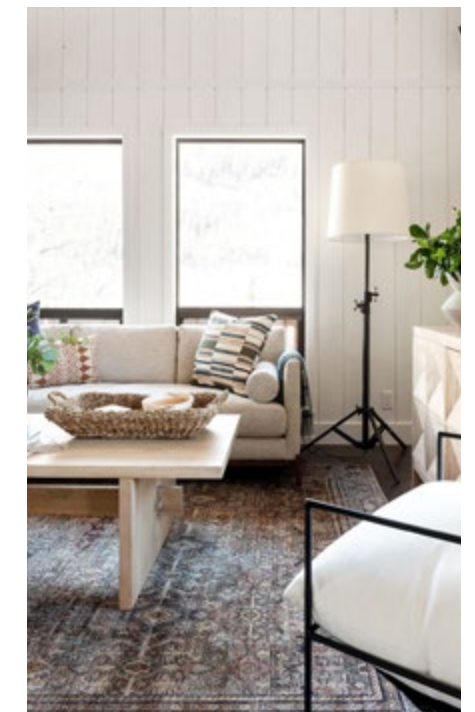
SUNBURY

Color: Credenza
Base Fabric: Mohair
Content: 100% Polyester
Width: 58" Abrasion: >30k Grade 5
Flammability: Cal 117, UFAC1
Cleaning: S
Repeat: 18" x 26.33"
Fabric Origin: Printed in USA



SUNBURY

Color: Ether
Base Fabric: Mohair
Content: 100% Polyester
Width: 58" Abrasion: >30k Grade 5
Flammability: Cal 117, UFAC1
Cleaning: S
Repeat: 18" x 26.33"
Fabric Origin: Printed in USA



INDUSTRIAL FARMHOUSE





BELFAST

Color: Ensign
Base Fabric: Charlotte
Content: 100% Polyester
Width: 55" Abrasion: 60k+ Grade 3
Flammability: Cal 117, UFAC1
Cleaning: WS
Repeat: 18" x 12.26"
Fabric Origin: Printed in USA



BELFAST

Color: Fog
Base Fabric: Charlotte
Content: 100% Polyester
Width: 55" Abrasion: 60k+ Grade 3
Flammability: Cal 117, UFAC1
Cleaning: WS
Repeat: 18" x 12.26"
Fabric Origin: Printed in USA



BELFAST

Color: Neutral
Base Fabric: Charlotte
Content: 100% Polyester
Width: 55" Abrasion: 60k+ Grade 3
Flammability: Cal 117, UFAC1
Cleaning: WS
Repeat: 18" x 12.26"
Fabric Origin: Printed in USA



MAXIMO

Color: Birch
Base Fabric: Ostrich
Content: 100% Polyester
Width: 58" Abrasion: >30k Grade 5
Flammability: Cal 117, UFAC1
Cleaning: S
Repeat: 4.5" x 9"
Fabric Origin: Printed in USA



MAXIMO

Color: Denim
Base Fabric: Ostrich
Content: 100% Polyester
Width: 58" Abrasion: >30k Grade 5
Flammability: Cal 117, UFAC1
Cleaning: S
Repeat: 4.5" x 9"
Fabric Origin: Printed in USA



MAXIMO

Color: Sage
Base Fabric: Ostrich
Content: 100% Polyester
Width: 58" Abrasion: >30k Grade 5
Flammability: Cal 117, UFAC1
Cleaning: S
Repeat: 4.5" x 9"
Fabric Origin: Printed in USA



BLOK

Color: Denim
Base Fabric: Donegal
Content: 92% Polyester, 8% Linen
Width: 56" Abrasion: >30k Grade 5
Flammability: Cal 117, UFAC1
Cleaning: S
Repeat: 27" x 21.133"
Fabric Origin: Printed in USA



BLOK

Color: Moss
Base Fabric: Donegal
Content: 92% Polyester, 8% Linen
Width: 56" Abrasion: >30k Grade 5
Flammability: Cal 117, UFAC1
Cleaning: S
Repeat: 27" x 21.133"
Fabric Origin: Printed in USA



BLOK

Color: Neutral
Base Fabric: Donegal
Content: 92% Polyester, 8% Linen
Width: 56" Abrasion: >30k Grade 5
Flammability: Cal 117, UFAC1
Cleaning: S
Repeat: 27" x 21.133"
Fabric Origin: Printed in USA



TURIN

Color: Ensign
Base Fabric: Charlotte
Content: 100% Polyester
Width: 55" Abrasion: 60k+ Grade 3
Flammability: Cal 117, UFAC1
Cleaning: WS
Repeat: 54" x 36"
Fabric Origin: Printed in USA



TURIN

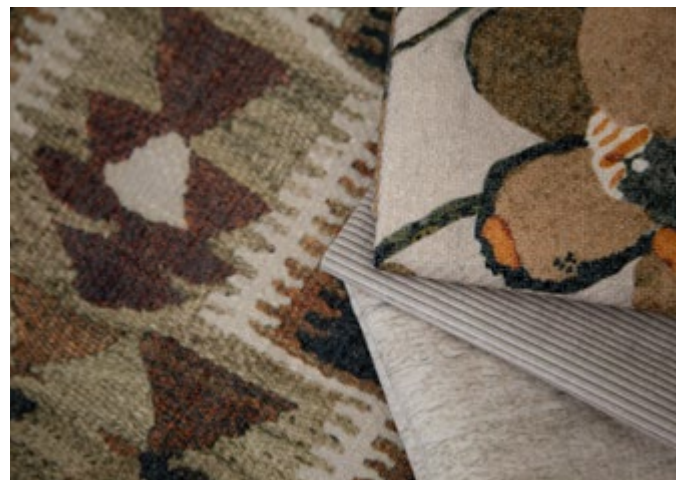
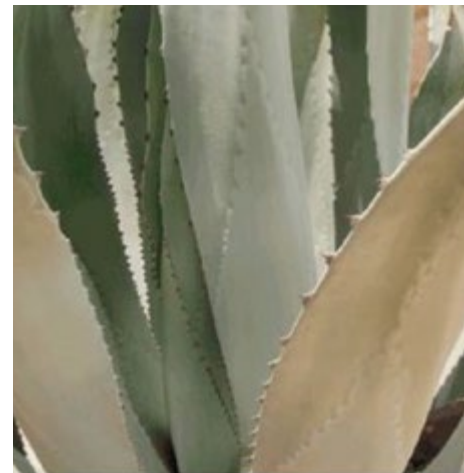
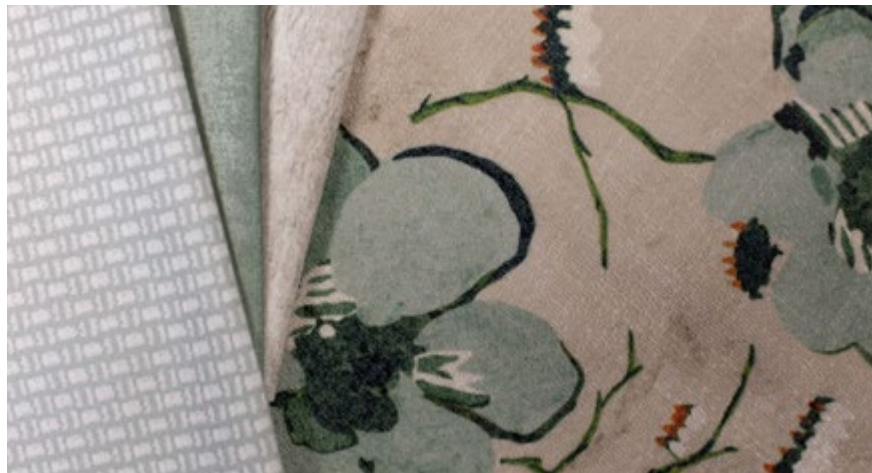
Color: Moss
Base Fabric: Charlotte
Content: 100% Polyester
Width: 55" Abrasion: 60k+ Grade 3
Flammability: Cal 117, UFAC1
Cleaning: WS
Repeat: 54" x 36"
Fabric Origin: Printed in USA



TURIN

Color: Neutral
Base Fabric: Charlotte
Content: 100% Polyester
Width: 55" Abrasion: 60k+ Grade 3
Flammability: Cal 117, UFAC1
Cleaning: WS
Repeat: 54" x 36"
Fabric Origin: Printed in USA





DESERT SONGS



KALAHARI

Color: Black Tan
Base Fabric: Sackcloth
Content: 100% Polyester
Width: 56" Abrasion: >30k Grade 5
Flammability: Cal 117, UFAC1
Cleaning: S
Repeat: 18" x 18.8"
Fabric Origin: Printed in USA



KALAHARI

Color: Denim
Base Fabric: Sackcloth
Content: 100% Polyester
Width: 56" Abrasion: >30k Grade 5
Flammability: Cal 117, UFAC1
Cleaning: S
Repeat: 18" x 18.8"
Fabric Origin: Printed in USA



KALAHARI

Color: Sierra
Base Fabric: Sackcloth
Content: 100% Polyester
Width: 56" Abrasion: >30k Grade 5
Flammability: Cal 117, UFAC1
Cleaning: S
Repeat: 18" x 18.8"
Fabric Origin: Printed in USA



LAREDO

Color: Longhorn
Base Fabric: Trapper
Content: 100% Polyester
Width: 56" Abrasion: >30k Grade 5
Flammability: Cal 117, UFAC1
Cleaning: S
Repeat: 27" x 27"
Fabric Origin: Printed in USA





RAMILLE

Color: Blue
Base Fabric: Donegal
Content: 92% Polyester, 8% Linen
Width: 56" Abrasion: >30k Grade 5
Flammability: Cal 117, UFAC1
Cleaning: S
Repeat: 27" x 21.133"
Fabric Origin: Printed in USA



RAMILLE

Color: Sand
Base Fabric: Donegal
Content: 92% Polyester, 8% Linen
Width: 56" Abrasion: >30k Grade 5
Flammability: Cal 117, UFAC1
Cleaning: S
Repeat: 27" x 21.133"
Fabric Origin: Printed in USA



STELLA

Color: Forest
Base Fabric: Sackcloth
Content: 100% Polyester
Width: 56" Abrasion: >30k Grade 5
Flammability: Cal 117, UFAC1
Cleaning: S
Repeat: 27" x 23.787"
Fabric Origin: Printed in USA



STELLA

Color: Frost
Base Fabric: Sackcloth
Content: 100% Polyester
Width: 56" Abrasion: >30k Grade 5
Flammability: Cal 117, UFAC1
Cleaning: S
Repeat: 27" x 23.787"
Fabric Origin: Printed in USA



RIFF

Color: Angora
Base Fabric: Mohair
Content: 100% Polyester
Width: 58" Abrasion: >30k Grade 5
Flammability: Cal 117, UFAC1
Cleaning: S
Repeat: 18" x 26.33"
Fabric Origin: Printed in USA



RIFF

Color: Atmosphere
Base Fabric: Mohair
Content: 100% Polyester
Width: 58" Abrasion: >30k Grade 5
Flammability: Cal 117, UFAC1
Cleaning: S
Repeat: 18" x 26.33"
Fabric Origin: Printed in USA



RIFF

Color: Neutral
Base Fabric: Mohair
Content: 100% Polyester
Width: 58" Abrasion: >30k Grade 5
Flammability: Cal 117, UFAC1
Cleaning: S
Repeat: 18" x 26.33"
Fabric Origin: Printed in USA



STELLA

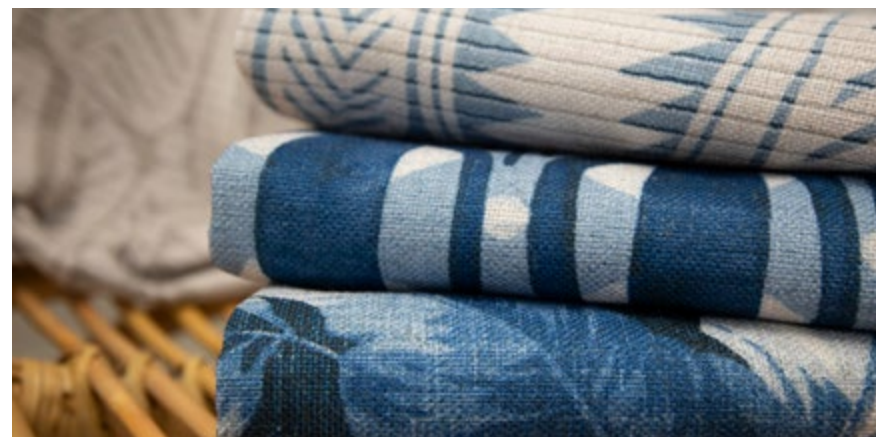
Color: Neutral
Base Fabric: Sackcloth
Content: 100% Polyester
Width: 56" Abrasion: >30k Grade 5
Flammability: Cal 117, UFAC1
Cleaning: S
Repeat: 27" x 23.787"
Fabric Origin: Printed in USA



STELLA

Color: Sage
Base Fabric: Sackcloth
Content: 100% Polyester
Width: 56" Abrasion: >30k Grade 5
Flammability: Cal 117, UFAC1
Cleaning: S
Repeat: 27" x 23.787"
Fabric Origin: Printed in USA





TROPICALIA



BALLINA

Color: Bombay Blush
 Base Fabric: Newport
 Content: 97% Cotton, 3% Linen
 Width: 60" Abrasion: >30k Grade 4
 Flammability: Cal 117, UFAC1
 Cleaning: WS
 Repeat: 27" x 36"
 Fabric Origin: Printed in USA



BALLINA

Color: Ether
 Base Fabric: Newport
 Content: 97% Cotton, 3% Linen
 Width: 60" Abrasion: >30k Grade 4
 Flammability: Cal 117, UFAC1
 Cleaning: WS
 Repeat: 27" x 36"
 Fabric Origin: Printed in USA



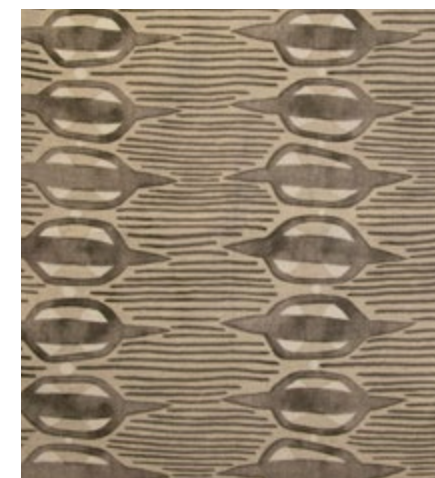
BALLINA

Color: Pearla
 Base Fabric: Newport
 Content: 97% Cotton, 3% Linen
 Width: 60" Abrasion: >30k Grade 4
 Flammability: Cal 117, UFAC1
 Cleaning: WS
 Repeat: 27" x 36"
 Fabric Origin: Printed in USA



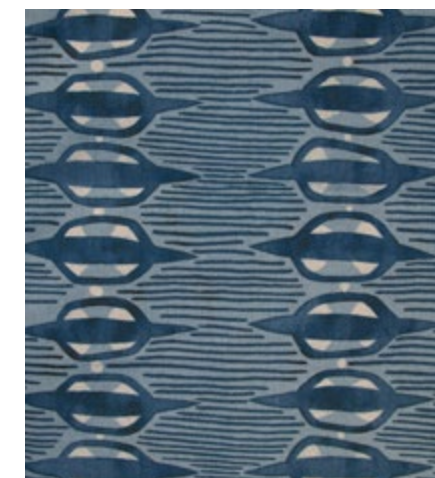
JAKOBSEN

Color: Bombay
 Base Fabric: Donegal
 Content: 92% Polyester, 8% Linen
 Width: 56" Abrasion: >30k Grade 5
 Flammability: Cal 117, UFAC1
 Cleaning: S
 Repeat: 27" x 17"
 Fabric Origin: Printed in USA



JAKOBSEN

Color: Cabana
 Base Fabric: Donegal
 Content: 92% Polyester, 8% Linen
 Width: 56" Abrasion: >30k Grade 5
 Flammability: Cal 117, UFAC1
 Cleaning: S
 Repeat: 27" x 17"
 Fabric Origin: Printed in USA



JAKOBSEN

Color: Denim
 Base Fabric: Donegal
 Content: 92% Polyester, 8% Linen
 Width: 56" Abrasion: >30k Grade 5
 Flammability: Cal 117, UFAC1
 Cleaning: S
 Repeat: 27" x 17"
 Fabric Origin: Printed in USA





MIAMI

Color: Bombay Griffen
Base Fabric: Donegal
Content: 92% Polyester, 8% Linen
Width: 56" Abrasion: >30k Grade 5
Flammability: Cal 117, UFAC1
Cleaning: S
Repeat: 27" x 25.127"
Fabric Origin: Printed in USA



MIAMI

Color: Cabana
Base Fabric: Donegal
Content: 92% Polyester, 8% Linen
Width: 56" Abrasion: >30k Grade 5
Flammability: Cal 117, UFAC1
Cleaning: S
Repeat: 27" x 25.127"
Fabric Origin: Printed in USA



MIAMI

Color: Indigo
Base Fabric: Donegal
Content: 92% Polyester, 8% Linen
Width: 56" Abrasion: >30k Grade 5
Flammability: Cal 117, UFAC1
Cleaning: S
Repeat: 27" x 25.127"
Fabric Origin: Printed in USA



SEQUOLA

Color: Angora
Base Fabric: Donegal
Content: 92% Polyester, 8% Linen
Width: 56" Abrasion: >30k Grade 5
Flammability: Cal 117, UFAC1
Cleaning: S
Repeat: 27" x 13.5"
Fabric Origin: Printed in USA



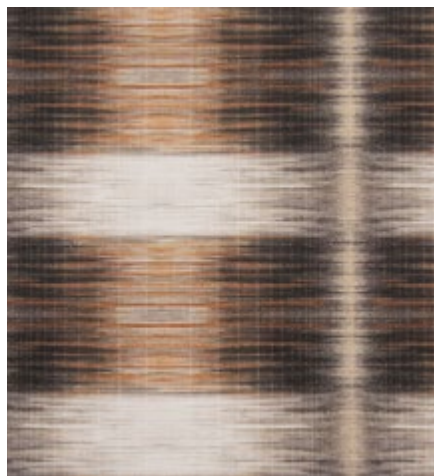
SEQUOLA

Color: Bombay Griffen
Base Fabric: Donegal
Content: 92% Polyester, 8% Linen
Width: 56" Abrasion: >30k Grade 5
Flammability: Cal 117, UFAC1
Cleaning: S
Repeat: 27" x 13.5"
Fabric Origin: Printed in USA



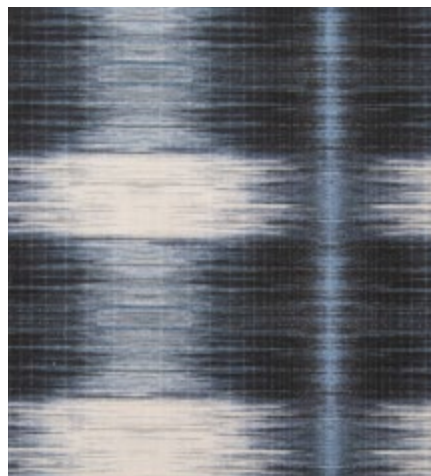
SEQUOLA

Color: Ensign
Base Fabric: Donegal
Content: 92% Polyester, 8% Linen
Width: 56" Abrasion: >30k Grade 5
Flammability: Cal 117, UFAC1
Cleaning: S
Repeat: 27" x 13.5"
Fabric Origin: Printed in USA



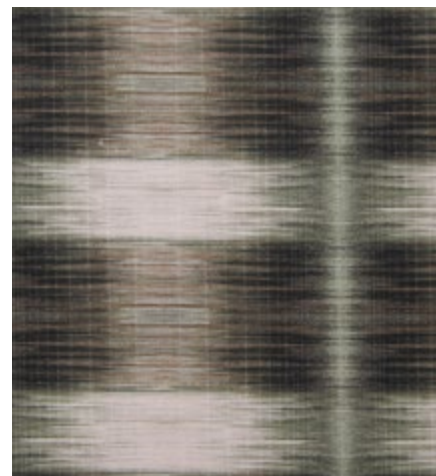
NEEDLE

Color: Bombay
Base Fabric: Newport
Content: 97% Cotton, 3% Linen
Width: 60" Abrasion: >30k Grade 4
Flammability: Cal 117, UFAC1
Cleaning: WS
Repeat: 6.75" x 4.477"
Fabric Origin: Printed in USA



NEEDLE

Color: Ink
Base Fabric: Newport
Content: 97% Cotton, 3% Linen
Width: 60" Abrasion: >30k Grade 4
Flammability: Cal 117, UFAC1
Cleaning: WS
Repeat: 6.75" x 4.477"
Fabric Origin: Printed in USA



NEEDLE

Color: Spruce
Base Fabric: Newport
Content: 97% Cotton, 3% Linen
Width: 60" Abrasion: >30k Grade 4
Flammability: Cal 117, UFAC1
Cleaning: WS
Repeat: 6.75" x 4.477"
Fabric Origin: Printed in USA



VALLANDRY

Color: Bombay
Base Fabric: Donegal
Content: 92% Polyester, 8% Linen
Width: 56" Abrasion: >30k Grade 5
Flammability: Cal 117, UFAC1
Cleaning: S
Repeat: 27" x 27"
Fabric Origin: Printed in USA



VALLANDRY

Color: Ivory
Base Fabric: Donegal
Content: 92% Polyester, 8% Linen
Width: 56" Abrasion: >30k Grade 5
Flammability: Cal 117, UFAC1
Cleaning: S
Repeat: 27" x 27"
Fabric Origin: Printed in USA



VALLANDRY

Color: Sea
Base Fabric: Donegal
Content: 92% Polyester, 8% Linen
Width: 56" Abrasion: >30k Grade 5
Flammability: Cal 117, UFAC1
Cleaning: S
Repeat: 27" x 27"
Fabric Origin: Printed in USA





HUDSON VALLEY



BUNNIES

Color: Fog
Base Fabric: Mohair
Content: 100% Polyester
Width: 58" Abrasion: >30k Grade 5
Flammability: Cal 117, UFAC1
Cleaning: S
Repeat: 6.75" x 5.3"
Fabric Origin: Printed in USA

BUNNIES

Color: Vintage
Base Fabric: Mohair
Content: 100% Polyester
Width: 58" Abrasion: >30k Grade 5
Flammability: Cal 117, UFAC1
Cleaning: S
Repeat: 6.75" x 5.3"
Fabric Origin: Printed in USA

HUDSON RUG

Color: Gray
Base Fabric: Seagrass
Content: 100%
Width: 56" Abrasion: >30k Grade 4
Flammability: Cal 117, UFAC1
Cleaning: S
Repeat: 18" x 19.877"
Fabric Origin: Printed in USA



KALUPTOS

Color: Alabaster
Base Fabric: Newport
Content: 97% Cotton, 3% Linen
Width: 60" Abrasion: >30k Grade 4
Flammability: Cal 117, UFAC1
Cleaning: WS
Repeat: 18" x 24.2"
Fabric Origin: Printed in USA

KALUPTOS

Color: Vintage
Base Fabric: Newport
Content: 97% Cotton, 3% Linen
Width: 60" Abrasion: >30k Grade 4
Flammability: Cal 117, UFAC1
Cleaning: WS
Repeat: 18" x 24.2"
Fabric Origin: Printed in USA





MAGALI

Color: Birch
Base Fabric: Donegal
Content: 92% Polyester, 8% Linen
Width: 56" Abrasion: >30k Grade 5
Flammability: Cal 117, UFAC1
Cleaning: S
Repeat: 27" x 32"
Fabric Origin: Printed in USA



MAGALI

Color: Spruce
Base Fabric: Donegal
Content: 92% Polyester, 8% Linen
Width: 56" Abrasion: >30k Grade 5
Flammability: Cal 117, UFAC1
Cleaning: S
Repeat: 27" x 32"
Fabric Origin: Printed in USA



ORLEANS

Color: Sand
Base Fabric: Mohair
Content: 100% Polyester
Width: 58" Abrasion: >30k Grade 5
Flammability: Cal 117, UFAC1
Cleaning: S
Repeat: 6.75" x 5.3"
Fabric Origin: Printed in USA



VALLI STRIPE

Color: Cream
Base Fabric: Mohair
Content: 100% Polyester
Width: 58" Abrasion: >30k Grade 5
Flammability: Cal 117, UFAC1
Cleaning: S
Repeat: 6.75" x 5.3"
Fabric Origin: Printed in USA



VALLI STRIPE

Color: Black
Base Fabric: Mohair
Content: 100% Polyester
Width: 58" Abrasion: >30k Grade 5
Flammability: Cal 117, UFAC1
Cleaning: S
Repeat: 6.75" x 5.3"
Fabric Origin: Printed in USA



OLMSTEAD

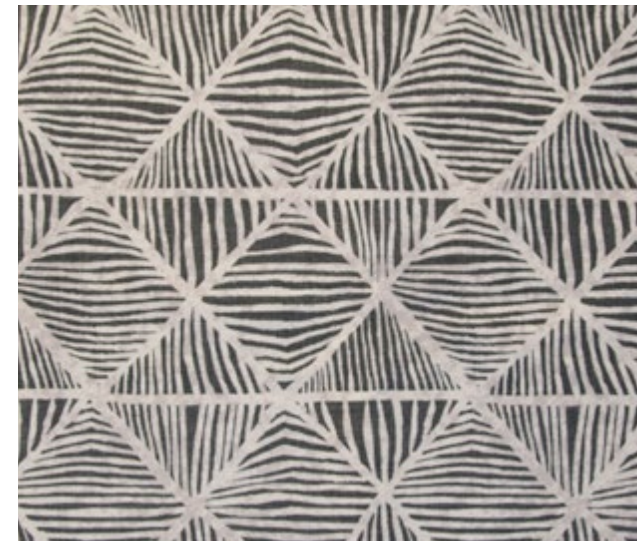
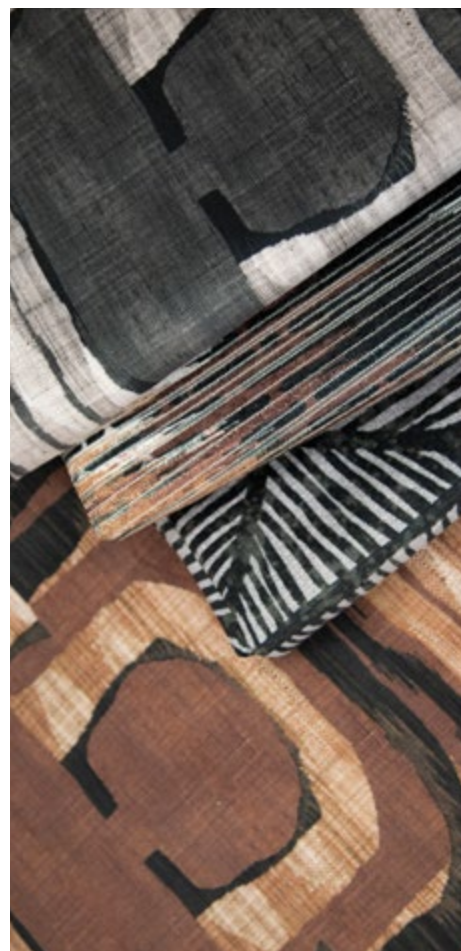
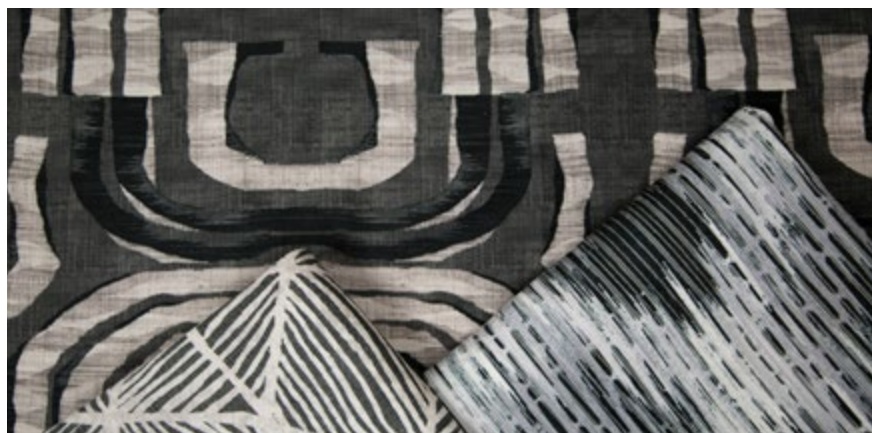
Color: Fog
Base Fabric: Mohair
Content: 100% Polyester
Width: 58" Abrasion: >30k Grade 5
Flammability: Cal 117, UFAC1
Cleaning: S
Repeat: 6.75" x 5.3"
Fabric Origin: Printed in USA



OLMSTEAD

Color: Vintage
Base Fabric: Mohair
Content: 100% Polyester
Width: 58" Abrasion: >30k Grade 5
Flammability: Cal 117, UFAC1
Cleaning: S
Repeat: 6.75" x 5.3"
Fabric Origin: Printed in USA





ANDONIS

Color: Ivory
 Base Fabric: Ostrich
 Content: 100% Polyester
 Width: 58" Abrasion: >30k Grade 5
 Flammability: Cal 117, UFAC1
 Cleaning: S
 Repeat: 13.5" x 22.5"
 Fabric Origin: Printed in USA

ANDONIS

Color: Raven
 Base Fabric: Ostrich
 Content: 100% Polyester
 Width: 58" Abrasion: >30k Grade 5
 Flammability: Cal 117, UFAC1
 Cleaning: S
 Repeat: 13.5" x 22.5"
 Fabric Origin: Printed in USA



KATRINA

Color: Charcoal
 Base Fabric: Springs White
 Content: 100% Polyester
 Width: 57" Abrasion: >30k Grade 5
 Flammability: Cal 117, UFAC1
 Cleaning: S
 Repeat: 13.5" x 21.8"
 Fabric Origin: Printed in USA

KATRINA

Color: Saddle
 Base Fabric: Springs White
 Content: 100% Polyester
 Width: 57" Abrasion: >30k Grade 5
 Flammability: Cal 117, UFAC1
 Cleaning: S
 Repeat: 13.5" x 21.8"
 Fabric Origin: Printed in USA

GEOMETRICS



