

The image shows three rolls of white fabric, likely for digital printing, stacked vertically. Each roll is wound around a brown cardboard core. The fabric has a fine, woven texture. A teal circular logo is overlaid on the top roll.

SPRINGS

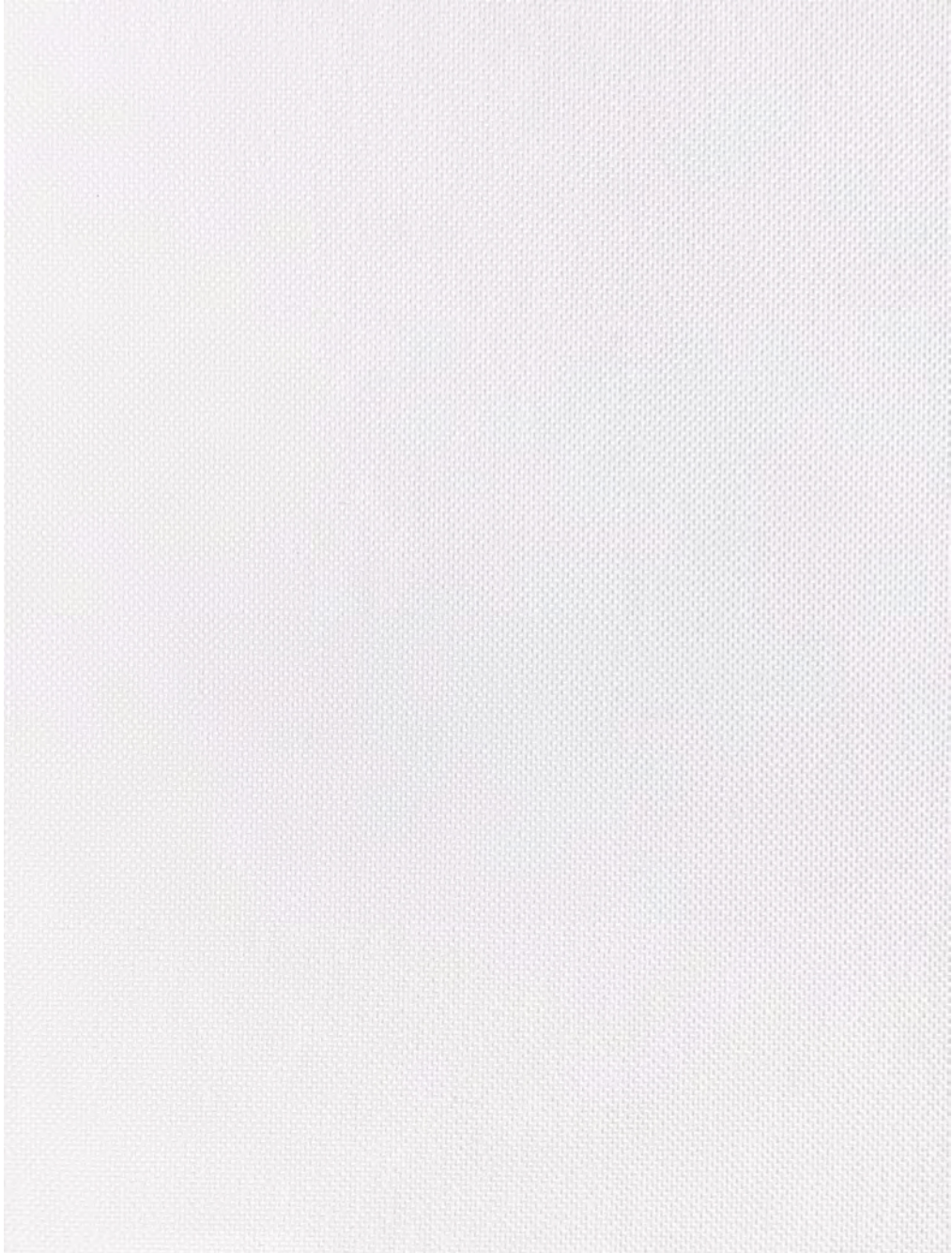


DIGITAL

substrates

AWNING

Synthetic Fibers



AWNING

Synthetic Fibers

Polyester with a classic look that will provide bright and vivid colors. Dimensional and crisp, useful for window, bedding and decorative applications.

CHARACTERISTICS

Fiber Content

100% Polyester

Width

60"

Printable Width

58"

Weight

7.6oz/yd² (257.6gsm)

PERFORMANCE

Abrasion

Grade 4 @60,000+
Wyzenbeek

Croaking

4 - Dry; 4 - Wet

Flammability

☒ NFPA 701- Pass
☀ Cal TB 117- Pass

Lightfastness

Class 4 For 40 Hours

CARE

Cleaning Code

WS

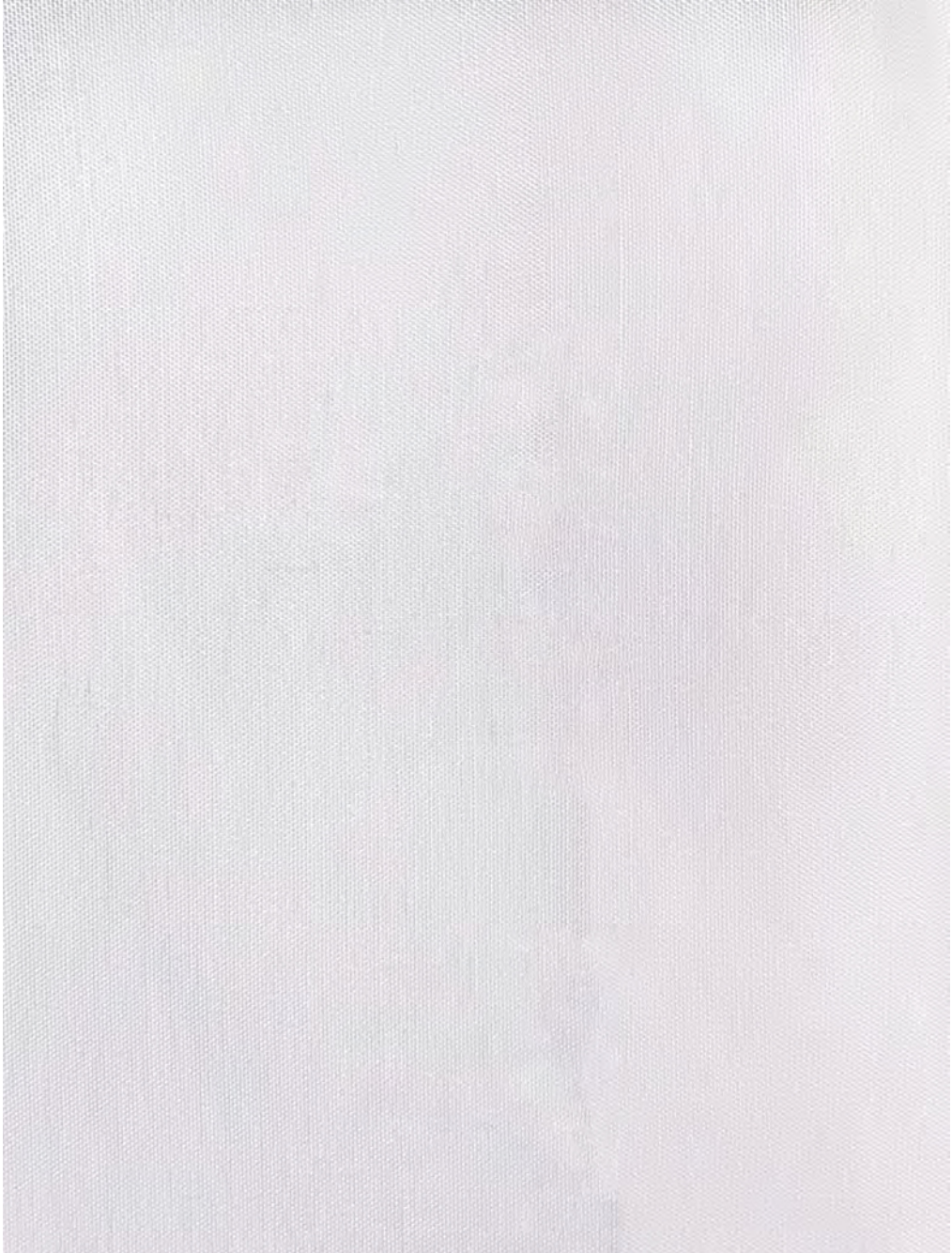
Care Instructions

Spot clean only with water and mild detergent. Blot the stain gently with a cloth dampened with this solution. Remove any residual foam or suds by repeating the procedure with water only.

— Rev 12.14.21 —

BATISTE WIDE

Synthetic Fibers



BATISTE WIDE

Synthetic Fibers

Great option for residential-hospitality-commercial drapes when more needed than plain sheer.

CHARACTERISTICS

Fiber Content

100%Polyester

Width

120"

Printable Width

118"

Weight

2.00 oz/yd² (68 gsm)

PERFORMANCE

Abrasion

Grade 4 @30,000+
Wyzenbeek

Croaking

4 - Dry; 4 - Wet

Flammability

NFPA 701- Pass
Cal TB 117- Pass

Lightfastness

Class 4 For 40 Hours

CARE

Cleaning Code

WS

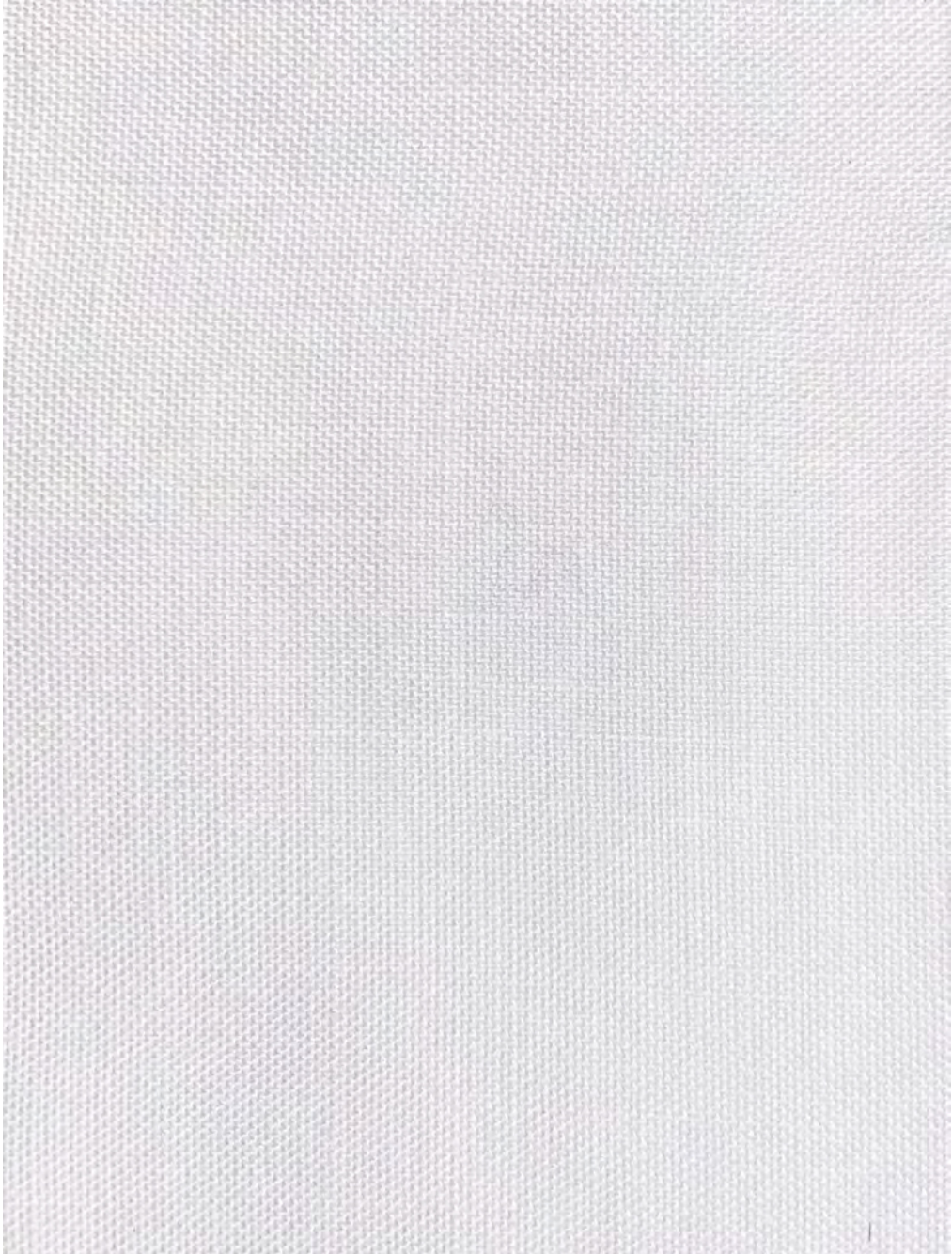
Care Instructions

Spot clean only with water and mild detergent. Blot the stain gently with a cloth dampened with this solution. Remove any residual foam or suds by repeating the procedure with water only.

— Rev 12.14.21 —

CHARLOTTE

Synthetic Fibers



Outdoor

CHARLOTTE

Synthetic Fibers

A soft and durable fabric with a truly natural look and feel. Adds visual appeal and dimension to any print. Suitable for upholstery, pillows, and accent pieces.

CHARACTERISTICS

Fiber Content

100% Polyester

Width

57"

Printable Width

55"

Weight

6.88 oz/yd² (233 gsm)

PERFORMANCE

Abrasion

Grade 3 @60,000+
Wyzenbeek

Croaking

4.5 - Dry; 4.5 - Wet

Flammability

Cal TB 117- Pass

Lightfastness

Class 4 For 40 Hours

CARE

Cleaning Code

WS

Care Instructions

Spot clean only with water and mild detergent. Blot the stain gently with a cloth dampened with this solution. Remove any residual foam or suds by repeating the procedure with water only.

— Rev 12.14.21 —

DONEGAL

Synthetic Fibers



DONEGAL

Synthetic Fibers

Donegal incorporates linen yarn with a polyester blend resembling a heavy linen. Performance with a natural feel. Suitable for upholstery, pillows, accents and drapery.

CHARACTERISTICS

Fiber Content

92%Polyester / 8% Linen

Width

56"

Printable Width

54"

Weight

14.56oz/yd² (491gsm)

PERFORMANCE

Abrasion

Grade 5 @30,000+
Wyzenbeek

Croaking

4 - Dry; 4 - Wet

Flammability

Cal TB 117- Pass

Lightfastness

Class 4 For 40 Hours

CARE

Cleaning Code

S

Care Instructions

Spot clean only with water-free dry-cleaning solvent.

— Rev 12.14.21 —

ECO CANVAS

Synthetic Fibers



ECO CANVAS

Synthetic Fibers

Perfect for a myriad of products when a GREEN story is desirable.

CHARACTERISTICS

Fiber Content

100%Polyester

Width

60"

Printable Width

58"

Weight

7.20oz/yd² (244 gsm)

PERFORMANCE

Abrasion

Grade 5 @30,000+
Wyzenbeek

Crocking

4 - Dry; 4 - Wet

Flammability



Lightfastness

Class 4 For 40 Hours

CARE

Cleaning Code

WS

Care Instructions

Spot clean only with water and mild detergent. Blot the stain gently with a cloth dampened with this solution. Remove any residual foam or suds by repeating the procedure with water only.

— Rev 12.14.21 —

EQUINOX (BLACKOUT)

Synthetic Fibers



EQUINOX (BLACKOUT)

Synthetic Fibers

There is no better product when a light block fabric is required.

CHARACTERISTICS

Fiber Content

100%Polyester

Width

58"

Printable Width

56"

Weight

9.76 oz/yd²(331gsm)

PERFORMANCE

Abrasion

Grade 4 @30,000+
Wyzenbeek

Croaking

4 - Dry; 4 - Wet

Flammability**Lightfastness**

Class 4 For 40 Hours

CARE

Cleaning Code

WS

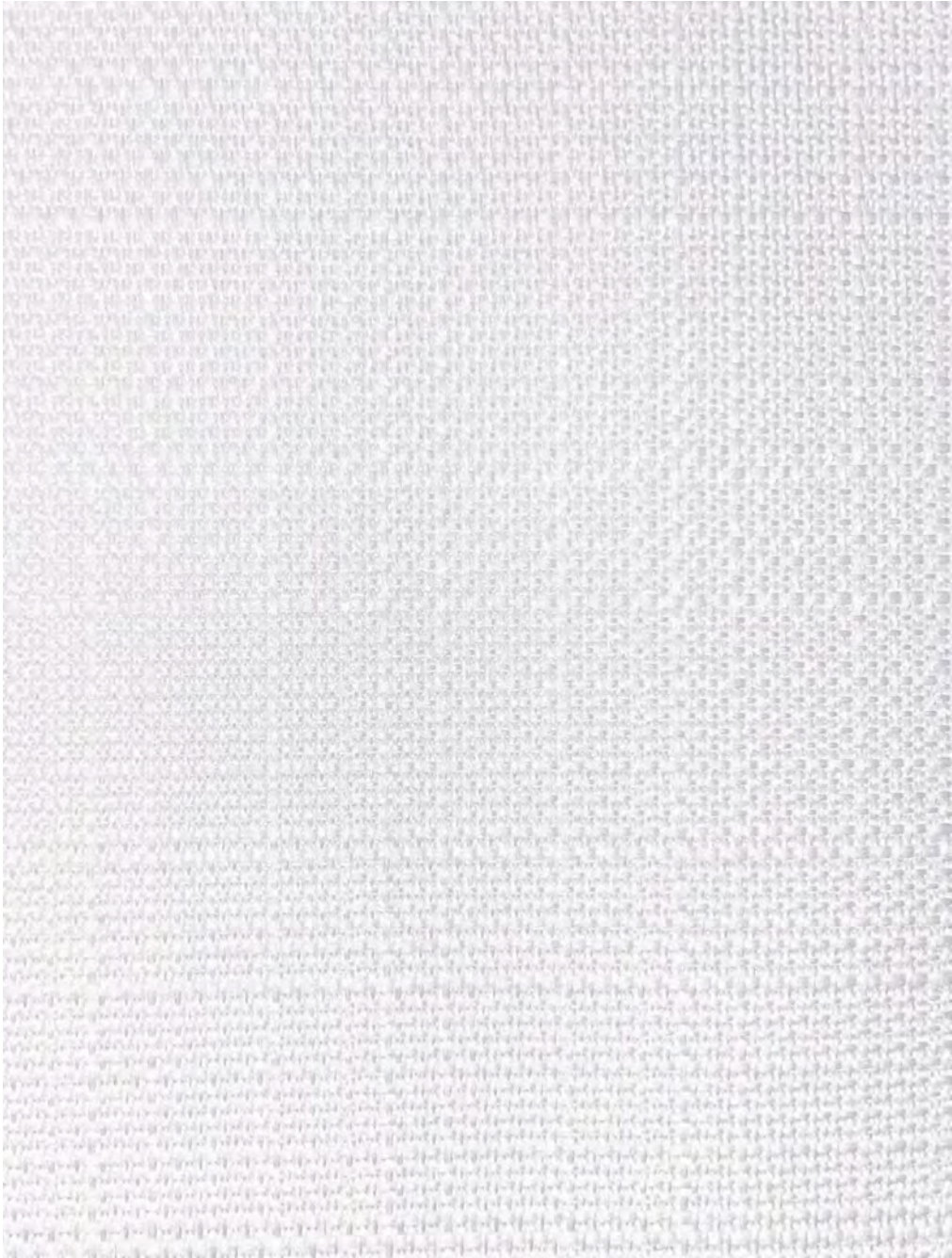
Care Instructions

Spot clean only with water and mild detergent. Blot the stain gently with a cloth dampened with this solution. Remove any residual foam or suds by repeating the procedure with water only.

— Rev 12.14.21 —

HEAVY LINEN

Synthetic Fibers



HEAVY LINEN

Synthetic Fibers

Multi purpose fabric suitable for commercial drapery, decorative pillows, and upholstery.

CHARACTERISTICS

Fiber Content

100%Polyester

Width

58"

Printable Width

56"

Weight

7.52oz/yd² (255 gsm)

PERFORMANCE

Abrasion

Grade 3 @30,000+
Wyzenbeek

Croaking

4 - Dry; 4 - Wet

Flammability

☒ NFPA 701- Pass
☀ Cal TB 117- Pass

Lightfastness

Class 4 For 40 Hours

CARE

Cleaning Code

WS

Care Instructions

Spot clean only with water and mild detergent. Blot the stain gently with a cloth dampened with this solution. Remove any residual foam or suds by repeating the procedure with water only.

— Rev 12.14.21 —

HILLO

Synthetic Fibers



HI LO

Synthetic Fibers

Luxurious dimensional chenille fabric designed to provide jacquard level complexity.

CHARACTERISTICS

Fiber Content

69% Polyester / 28%Rayon /
3%Cotton

Width

56"

Printable Width

54"

Weight

15.44oz/yd² (522 gsm)

PERFORMANCE

Abrasion

Grade 5 @30,000+
Wyzenbeek

Croaking

4 - Dry; 4 - Wet

Flammability

Cal TB 117- Pass

Lightfastness

Class 4 For 40 Hours

CARE

Cleaning Code

S

Care Instructions

Spot clean only with water-free dry cleaning solvent.

— Rev 12.14.21 —

MEDICI

Synthetic Fibers



MEDICI

Synthetic Fibers

A textured fabric designed for light furniture use.

CHARACTERISTICS

Fiber Content

100%Polyester

Width

57"

Printable Width

55"

Weight

8.52oz/yd² (282 gsm)

PERFORMANCE

Abrasion

Grade 3 @48,000
+ Wyzenbeek

Croaking

4.5 - Dry; 3 - Wet

Flammability

Cal TB 117- Pass

Class 3 For 40 Hours

CARE

Cleaning Code

S

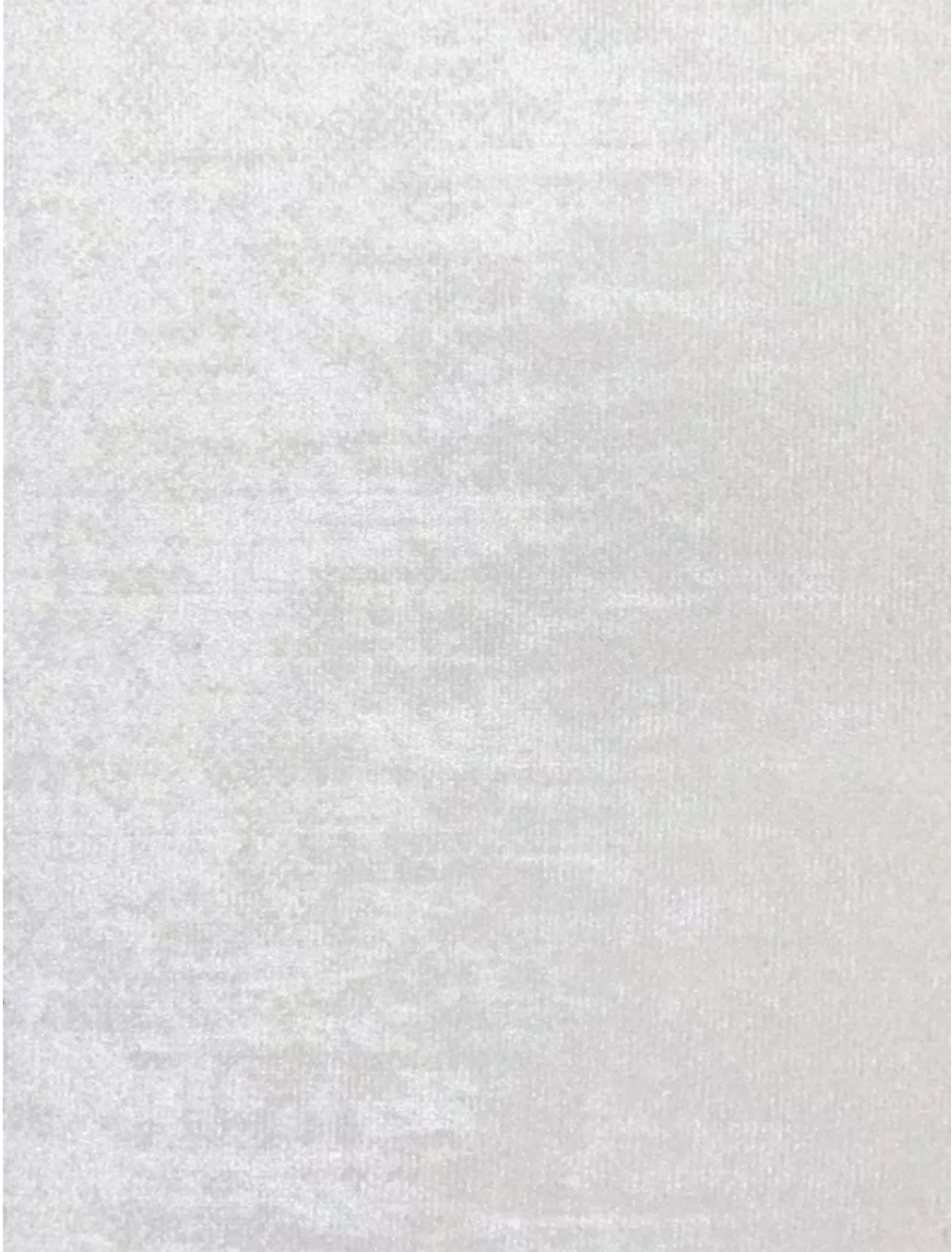
Care Instructions

Spot clean only with water-free dry cleaning solvent.

— Rev 12.14.21 —

MOHAIR

Synthetic Fibers



Commercial

MOHAIR

Synthetic Fibers

A high pile plush fabric. Velvety appearance and feel.

CHARACTERISTICS

Fiber Content

100% Polyester

Width

58"

Printable Width

56"

Weight

9.68 oz/yd² (328 gsm)

PERFORMANCE

Abrasion

Grade 5 @30,000+
Wyzenbeek

Croaking

4 - Dry; 5 - Wet

Flammability

NFPA 701- Pass
Cal TB 117- Pass

Lightfastness

Class 4 For 40 Hours

CARE

Cleaning Code

S

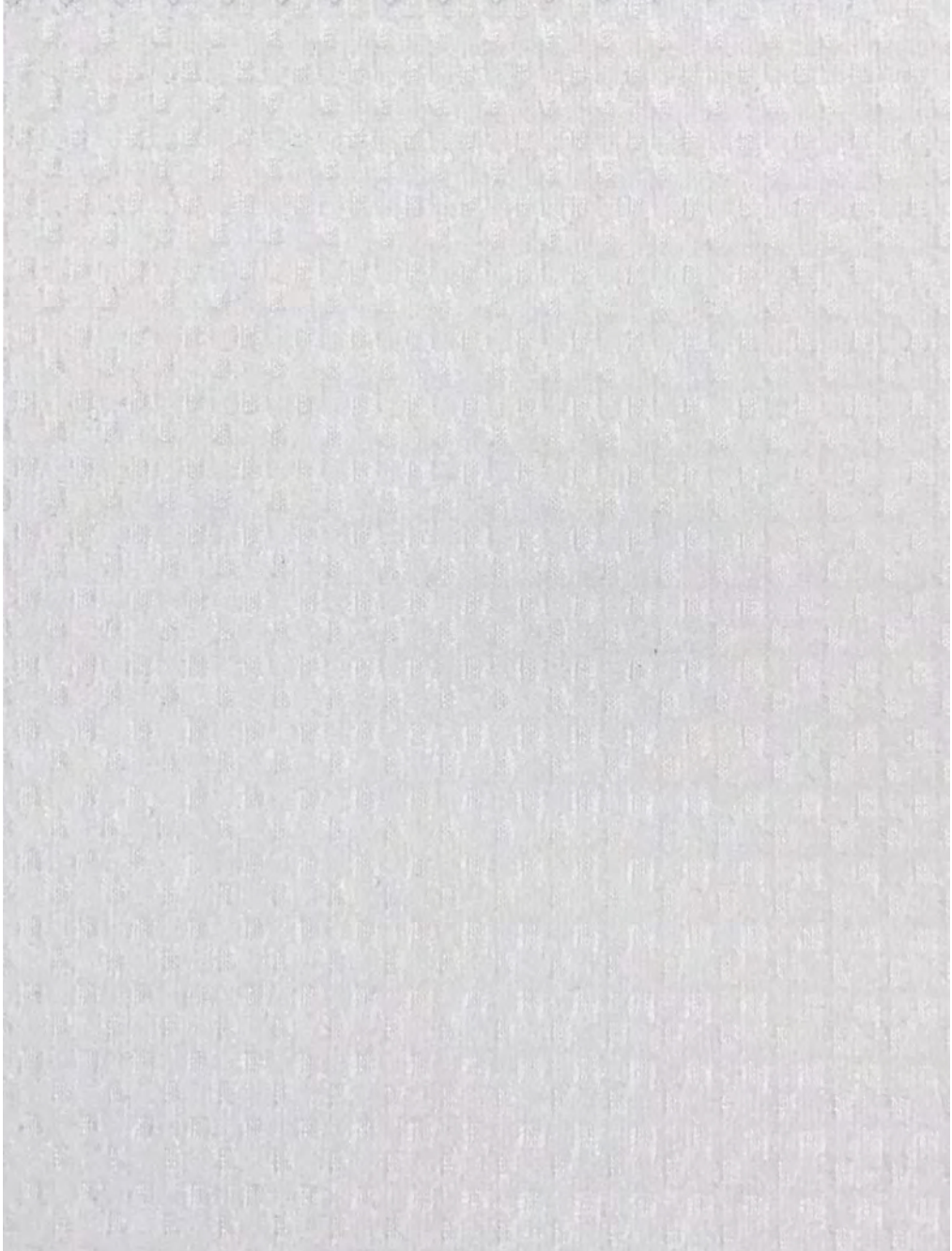
Care Instructions

Spot clean only with water-free dry cleaning solvent.

— Rev 12.14.21 —

OSTRICH

Synthetic Fibers



OSTRICH

Synthetic Fibers

Textural fabric adds interest to the hand and visual attributes.

CHARACTERISTICS

Fiber Content

100%Polyester

Width

58"

Printable Width

56"

Weight

9.92oz/yd² (336 gsm)

PERFORMANCE

Abrasion

Grade 5 @30,000+
Wyzenbeek

Croaking

4 - Dry; 4 - Wet

Flammability

Cal TB 117- Pass

Lightfastness

Class 4 For 40 Hours

CARE

Cleaning Code

S

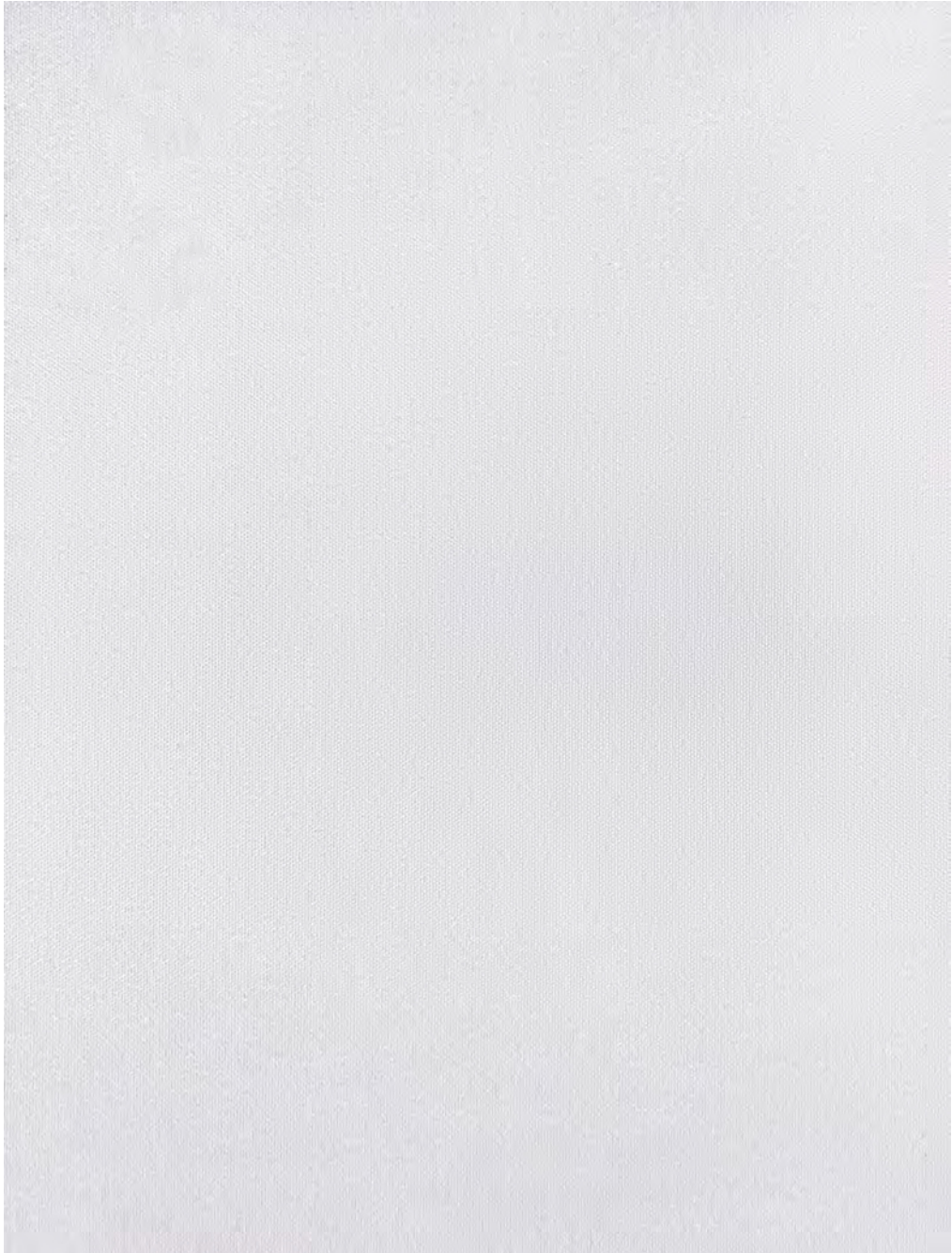
Care Instructions

Spot clean only with water-free dry cleaning solvent.

— Rev 12.14.21 —

PEACHSKIN WIDE

Synthetic Fibers



PEACHSKIN WIDE

Synthetic Fibers

Micro-fiber fabric that has been lightly sanded giving it a very soft feel.
Perfect for bedding and home dec projects.

CHARACTERISTICS

Fiber Content

100%Polyester

Width

120"

Printable Width

118"

Weight

2.96 oz/yd²(100gsm)

PERFORMANCE

Abrasion

Grade 5 @30,000+
Wyzenbeek

Crocking

4 - Dry; 4 - Wet

Flammability

Cal TB 117- Pass

Lightfastness

Class 4 For 40 Hours

CARE

Cleaning Code

W

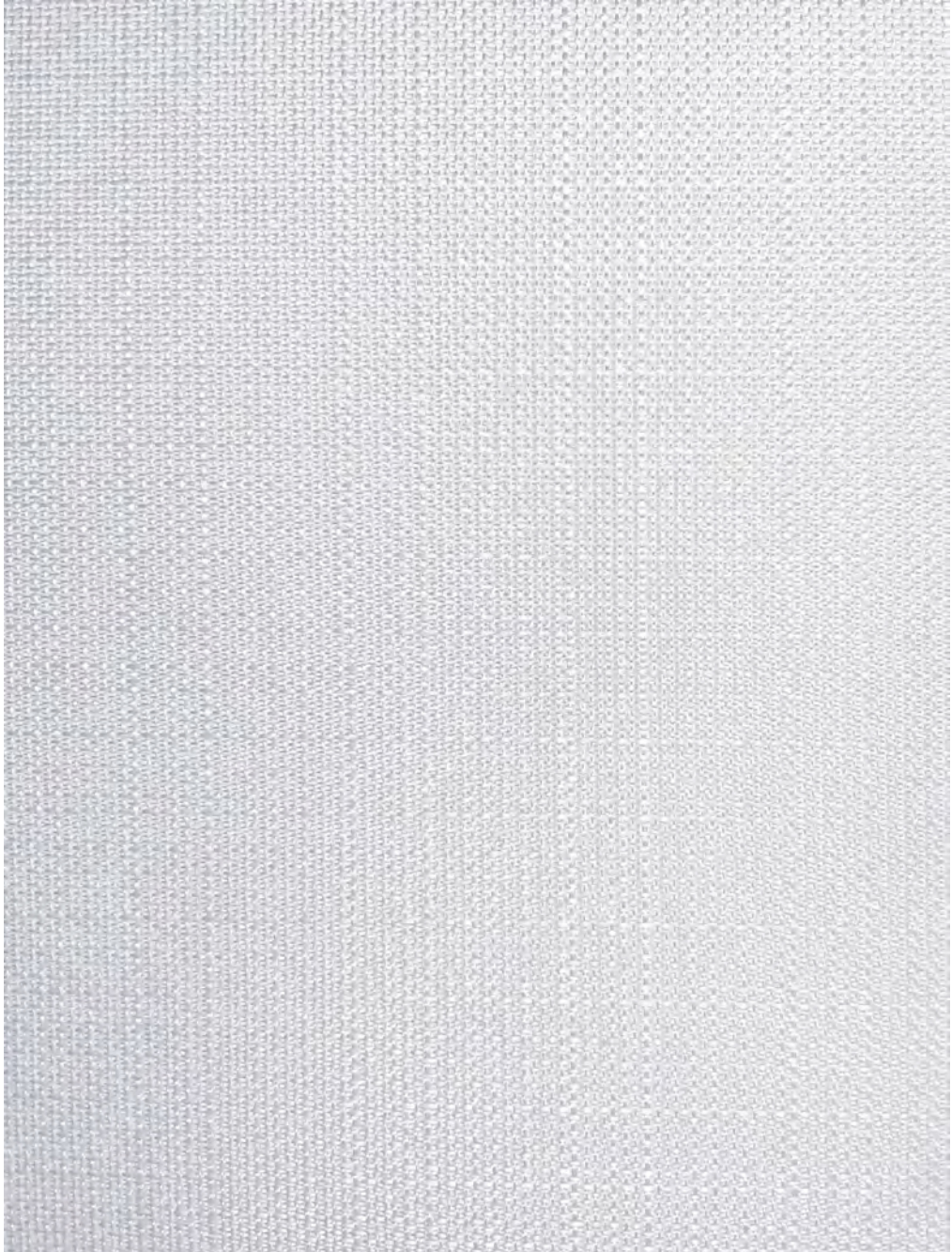
Care Instructions

Clean with a water-based cleanser. Do not use bleach or solvents. Cold water wash, tumble dry low. Remove promptly from dryer. Do not iron.

— Rev 12.14.21 —

PEBBLE

Synthetic Fibers



PEBBLE

Synthetic Fibers

Texture and light blocking technology combined for adding dimension and functionality.

CHARACTERISTICS

Fiber Content

100% Polyester

Width

60"

Printable Width

58"

Weight

13.04oz/yd² (441gsm)

PERFORMANCE

Abrasion**Crocking**

4 - Dry; 4 - Wet

Flammability**Lightfastness**

Class 4 For 40 Hours

CARE

Cleaning Code

WS

Care Instructions

Spot clean only with water and mild detergent. Blot the stain gently with a cloth dampened with this solution. Remove any residual foam or suds by repeating the procedure with water only.

— Rev 12.14.21 —

RAFFIA

Synthetic Fibers



Outdoor

RAFFIA

Synthetic Fibers

Woven raffia is derived from fiber in African Palm leaves. It creates a dimensional, irregular surface and is a popular decorative fabric. Raffia is a polyester version of the original providing performance texture at a popular price. Suitable for upholstery, pillows, accent pieces and drapery.

CHARACTERISTICS

Fiber Content

100%Polyester

Width

56"

Printable Width

54"

Weight

6.7 oz/yd² (227 gsm)

PERFORMANCE

Abrasion

Grade 4 @ 18,000+
Wyzenbeek

Croaking

4 - Dry; 3 - Wet

Flammability

Cal TB 117- Pass

Lightfastness

Class 4 For 40 Hours

CARE

Cleaning Code

W

Care Instructions

Clean with a water-based cleanser. Do not use bleach or solvents. Cold water wash, tumble dry low. Remove promptly from dryer. Do not iron.

— Rev 12.14.21 —

SACKCLOTH

Synthetic Fibers



SACKCLOTH

Synthetic Fibers

A heavy, multi-level, slubby twill that balances it's rugged look with a soft drapability. Suitable for upholstery, pillows and accent pieces.

CHARACTERISTICS

Fiber Content

100%Polyester

Width

56"

Printable Width

54"

Weight

16.32oz/yd² (552 gsm)

PERFORMANCE

Abrasion

Grade 4 @30,000+
Wyzenbeek

Croaking

4 - Dry; 4 - Wet

Flammability

Cal TB 117- Pass

Lightfastness

Class 4 For 40 Hours

CARE

Cleaning Code

S

Care Instructions

Spot clean only with water-free dry cleaning solvent.

— Rev 12.14.21 —

SAVANNAH WIDE

Synthetic Fibers



SAVANNAH WIDE

Synthetic Fibers

Excellent fabric for bedding-drapes with the option to print either side.
One side brush micro fiber, satin finish on the other.

CHARACTERISTICS

Fiber Content

100%Polyester

Width

118"

Printable Width

116"

Weight

5.92oz/yd² (201gsm)

PERFORMANCE

Abrasion

Grade 4 @30,000+
Wyzenbeek

Croaking

4 - Dry; 4 - Wet

Flammability

Cal TB 117- Pass

Lightfastness

Class 4 For 40 Hours

CARE

Cleaning Code

W

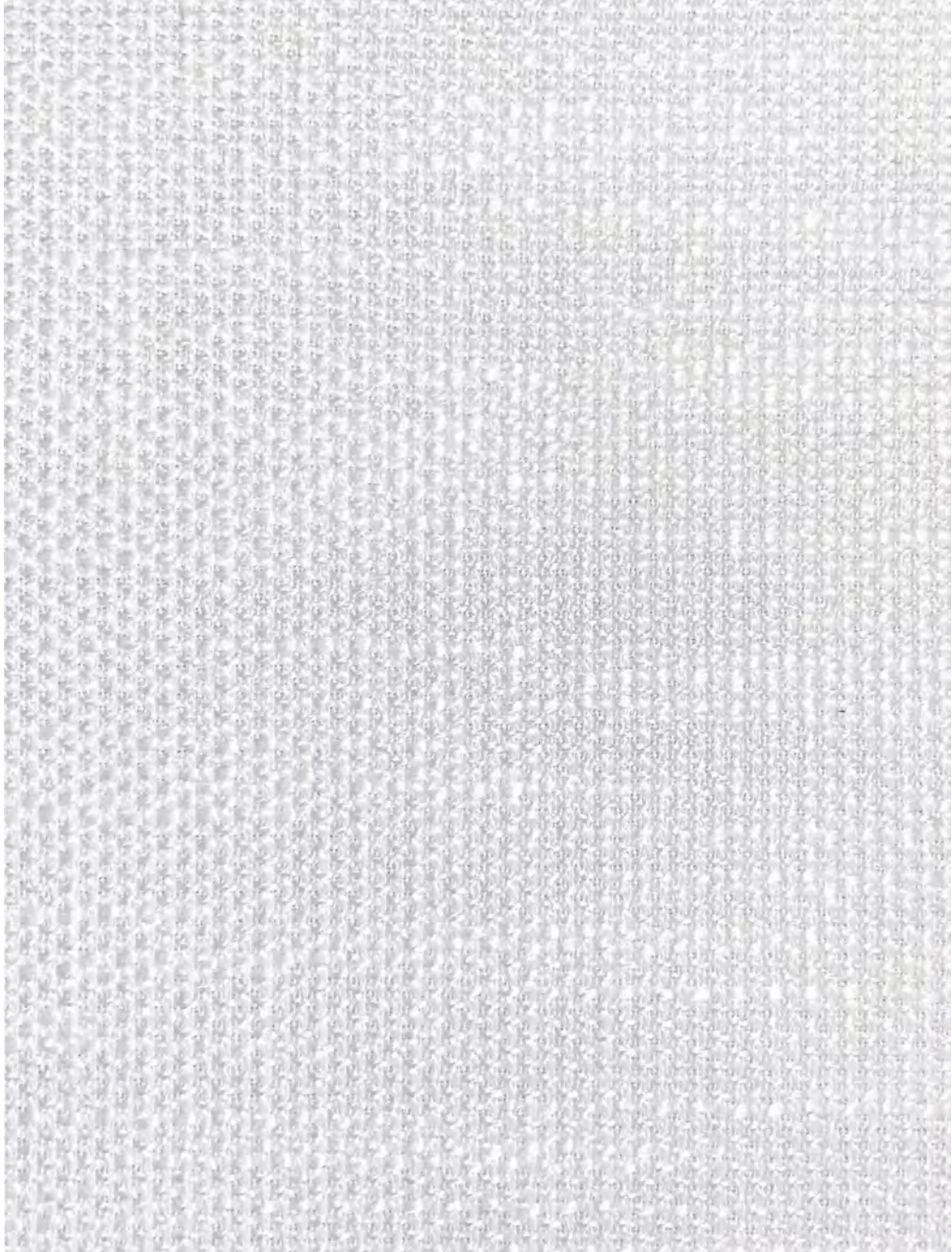
Care Instructions

Clean with a water-based cleanser. Do not use bleach or solvents. Cold water wash, tumble dry low. Remove promptly from dryer. Do not iron.

— Rev 12.14.21 —

SEAGRASS

Synthetic Fibers



SEAGRASS

Synthetic Fibers

A textural, dimensional woven cloth adds dimension to any printed design. Specifically developed for upholstery applications.

CHARACTERISTICS

Fiber Content

100%Polyester

Width

56"

Printable Width

54"

Weight

13.52oz/yd² (458 gsm)

PERFORMANCE

Abrasion

Grade 4 @30,000+
Wyzenbeek

Croaking

4 - Dry; 4 - Wet

Flammability

Cal TB 117- Pass

Lightfastness

Class 4 For 40 Hours

CARE

Cleaning Code

S

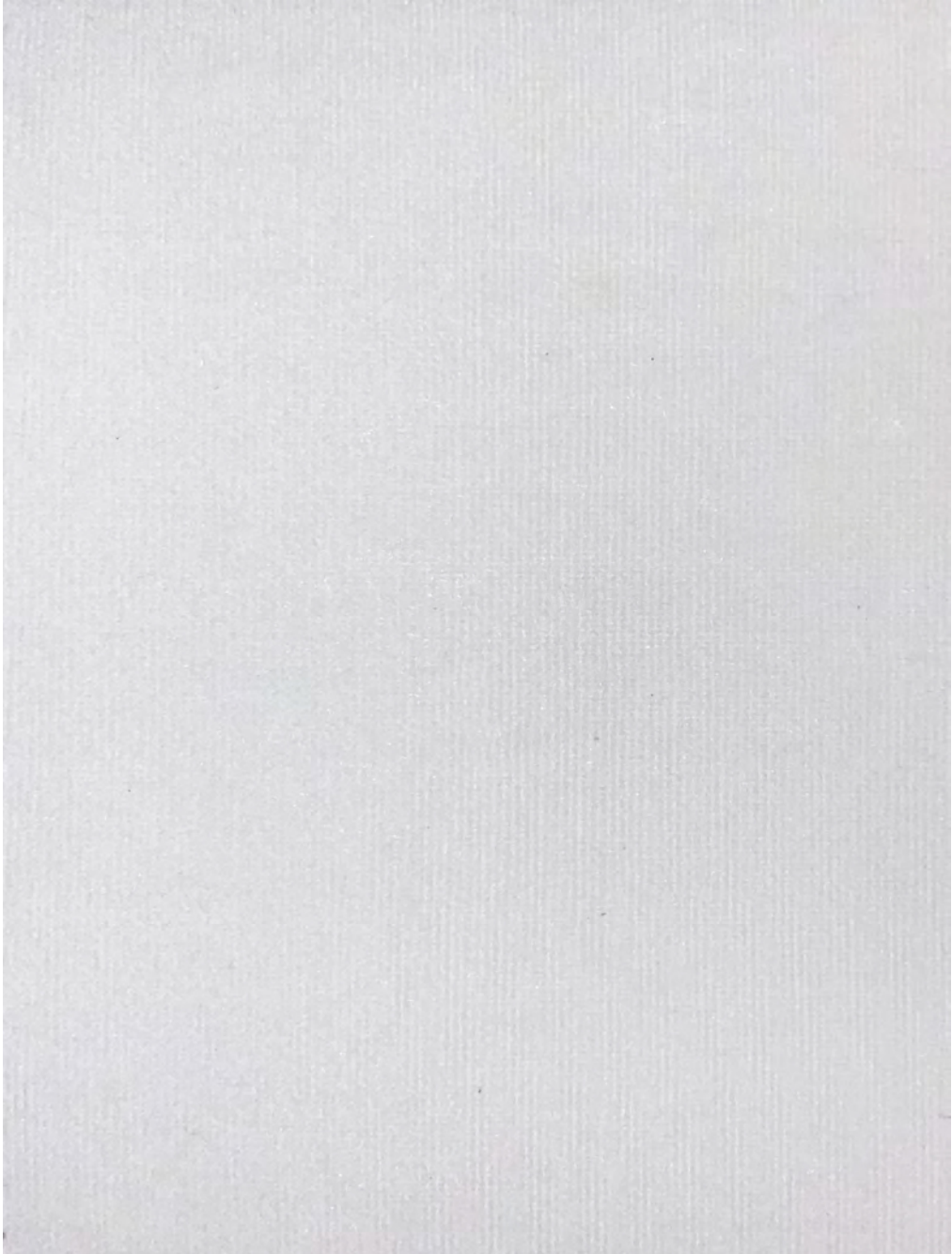
Care Instructions

Spot clean only with water-free dry cleaning solvent.

— Rev 12.14.21 —

SPRINGS WHITE

Synthetic Fibers



SPRINGS WHITE

Synthetic Fibers

Short pile textural fabric that provides crisp and clean images with softness and performance.

CHARACTERISTICS

Fiber Content

100%Polyester

Width

57"

Printable Width

55"

Weight

10.32oz/yd² (349 gsm)

PERFORMANCE

Abrasion

Grade 5 @30,000+
Wyzenbeek

Croaking

4 - Dry; 4 - Wet

Flammability

Cal TB 117- Pass

Lightfastness

Class 4 For 40 Hours

CARE

Cleaning Code

S

Care Instructions

Spot clean only with water-free dry cleaning solvent.

— Rev 12.14.21 —

TRAPPER

Synthetic Fibers



TRAPPER

Synthetic Fibers

Surface texture with the appearance of a hair on animal hide. Unique appearance with any type of design.

CHARACTERISTICS

Fiber Content

100%Polyester

Width

58"

Printable Width

56"

Weight

9.76 oz/yd²(331gsm)

PERFORMANCE

Abrasion

Grade 5 @30,000+
Wyzenbeek

Croaking

4 - Dry; 5 - Wet

Flammability

Cal TB 117- Pass

Lightfastness

Class 4 For 40 Hours

CARE

Cleaning Code

S

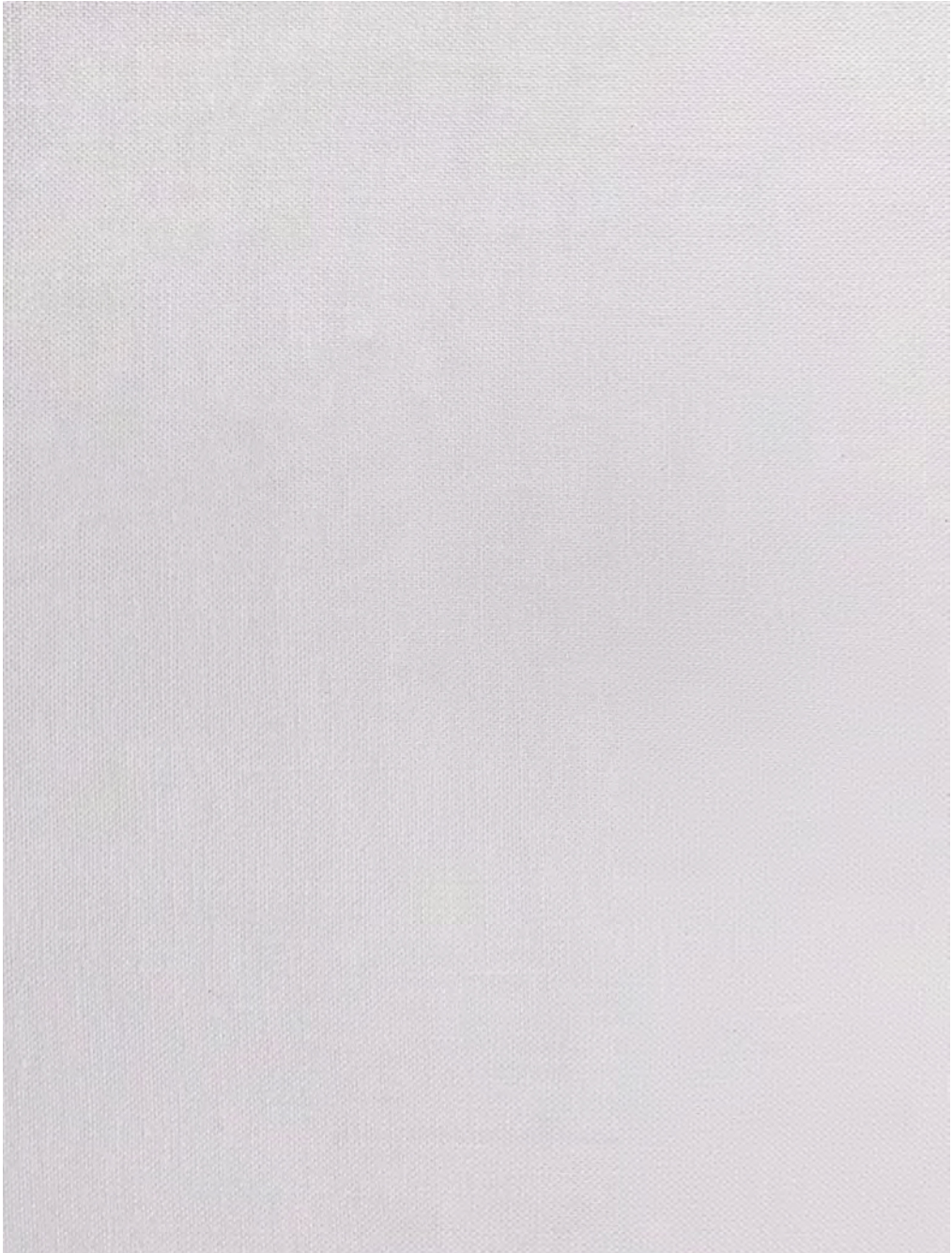
Care Instructions

Spot clean only with water-free dry cleaning solvent.

— Rev 12.14.21 —

COTTON 60x60

Natural Fibers



COTTON 60x60

Natural Fibers

A soft-handed versatile cotton, great for sewing apparel and accessories.

CHARACTERISTICS

Fiber Content

100% Cotton

Width

58"

Printable Width

56"

Weight

4.60 oz/yd² (156gsm)

PERFORMANCE

Abrasion

Grade 3 @ 10,000+
Wyzenbeek

Crocking

Flammability

Cal TB 117- Pass

Lightfastness

Class 4 For 40 Hours

CARE

Cleaning Code

W

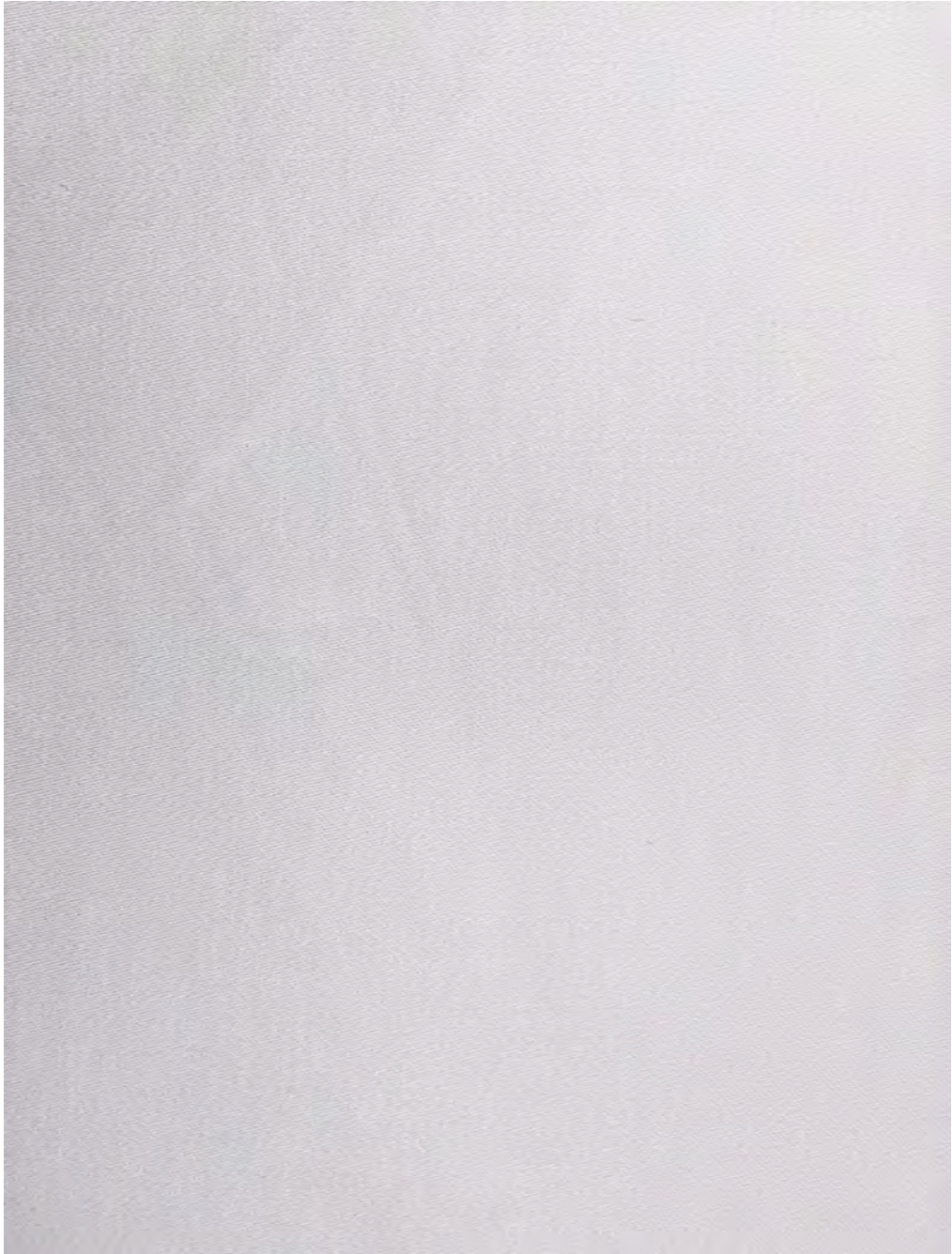
Care Instructions

Clean with a water-based cleanser. Do not use bleach or solvents. Cold water wash, tumble dry low. Remove promptly from dryer. Do not iron.

— Rev 12.14.21 —

FINE SATEEN

Natural Fibers



FINE SATEEN

Natural Fibers

Ultra-soft fabric with a subtle sheen making it perfect for a multitude of projects.

CHARACTERISTICS

Fiber Content

100% Cotton

Width

58"

Printable Width

55"

Weight

4.72 oz/yd² (160gsm)

PERFORMANCE

Abrasion

Crocking

Flammability

Cal TB 117- Pass

Lightfastness

Class 4 For 40 Hours

CARE

Cleaning Code

WS

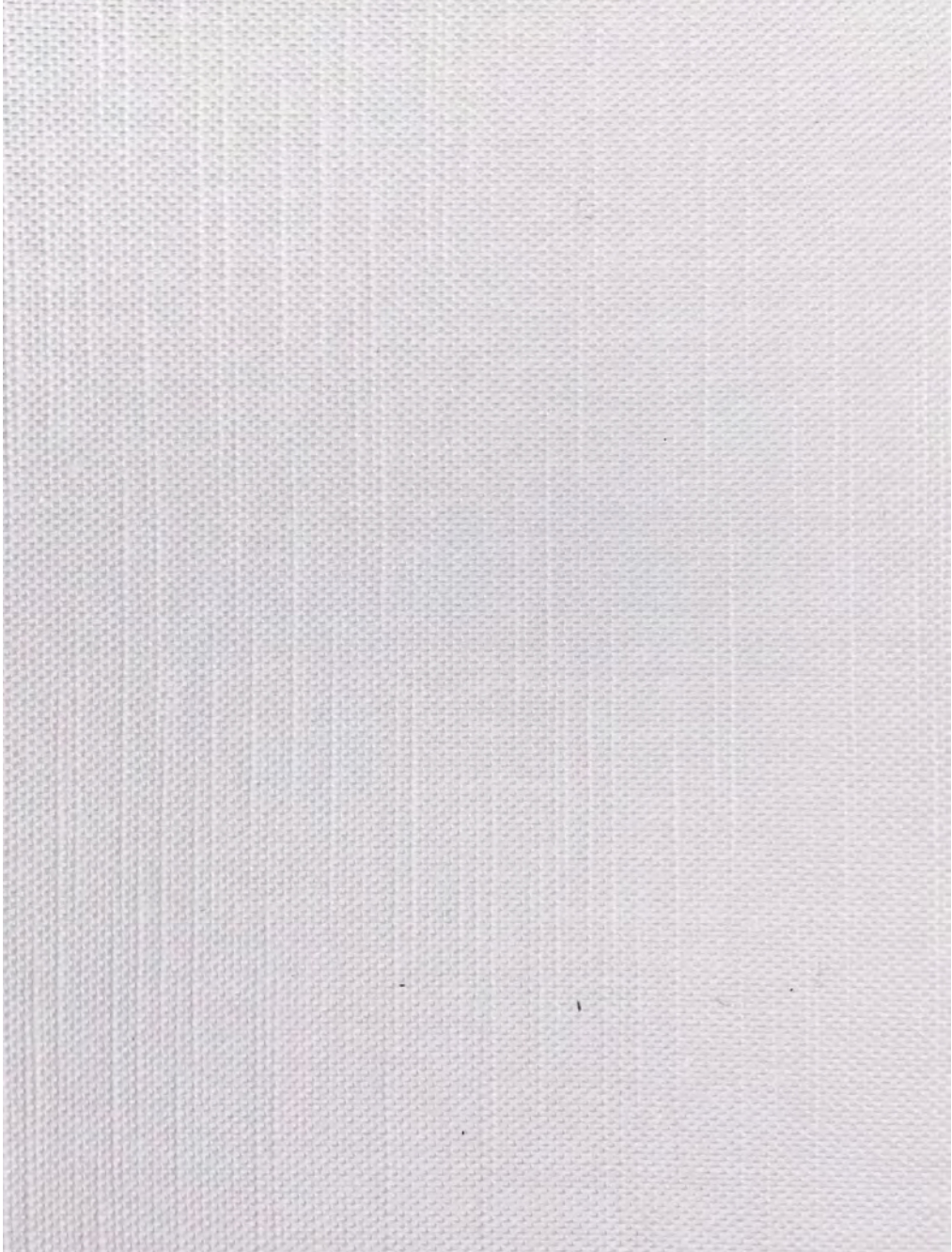
Care Instructions

Spot clean only with water and mild detergent. Blot the stain gently with a cloth dampened with this solution. Remove any residual foam or suds by repeating the procedure with water only.

— Rev 12.14.21 —

LEENANE

Natural Fibers



LEENANE

Natural Fibers

Newport's cousin with a more subtle slub texture. Also great for pillows and home dec accessories.

CHARACTERISTICS

Fiber Content

97% Cotton / 3% Linen

Width

60"

Printable Width

58"

Weight

6.40 oz/yd² (217gsm)

PERFORMANCE

Abrasion**Crocking****Flammability**

Cal TB 117- Pass

Lightfastness

Class 4 For 40 Hours

CARE

Cleaning Code

WS

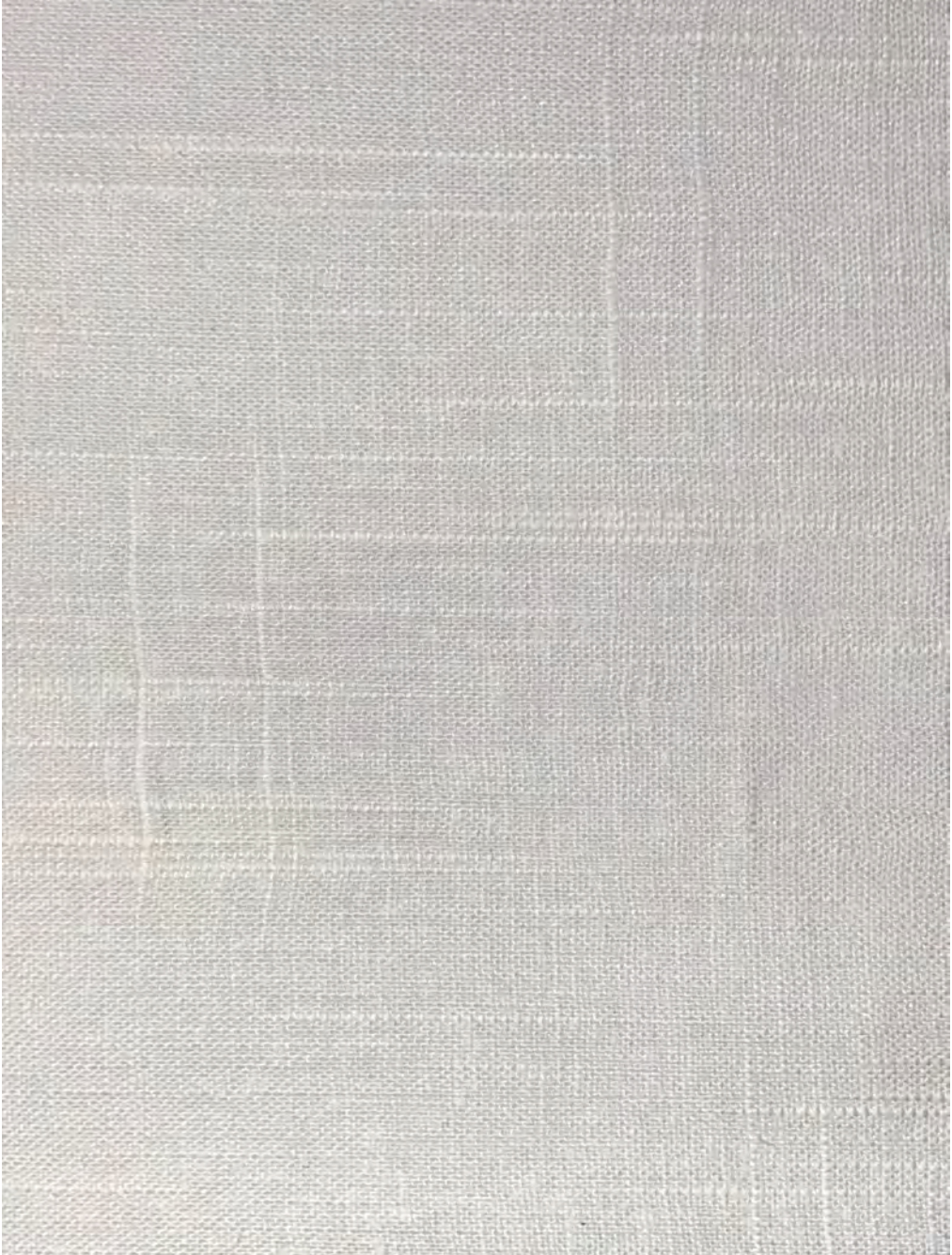
Care Instructions

Spot clean only with water and mild detergent. Blot the stain gently with a cloth dampened with this solution. Remove any residual foam or suds by repeating the procedure with water only.

— Rev 12.14.21 —

NEWPORT

Natural Fibers



NEWPORT

Natural Fibers

A cotton / linen fabric with slub textures in both warp and weft directions. Perfect for pillows and home dec accessories.

CHARACTERISTICS

Fiber Content

97% Cotton / 3% Linen

Width

60"

Printable Width

58"

Weight

7.44 oz/yd² (252gsm)

PERFORMANCE

Abrasion**Crocking****Flammability**

Cal TB 117- Pass

Lightfastness

Class 4 For 40 Hours

CARE

Cleaning Code

WS

Care Instructions

Spot clean only with water and mild detergent. Blot the stain gently with a cloth dampened with this solution. Remove any residual foam or suds by repeating the procedure with water only.

— Rev 12.14.21 —

AWNING

Synthetic Fibers

Polyester with a classic look that will provide bright and vivid colors. When treated with Springshield, it's useful for a variety of outdoor applications.

CHARACTERISTICS

Fiber Content

100% Polyester

Width

59"

Printable Width

56"

Weight

8.25 oz/yd² (278 gsm)

PERFORMANCE

Abrasion

Grade 3 @ 50,000+
Wyzenbeek

Crocking

4 - Dry; 3 - Wet

Flammability

Cal TB II7 - Pass

Lightfastness

Class 3 @ 1,200+ Hours

CARE

Cleaning Code

WS

Care Instructions

Spot clean only with water and mild detergent. Blot the stain gently with a cloth dampened with this solution. Remove any residual foam or suds by repeating the procedure with water only.

Rev 7.19.23

CHARLOTTE

Synthetic Fibers

A soft and durable fabric with a truly natural look and feel. Adds visual appeal and dimension to any print. When treated with Springshield, it's useful for a variety of outdoor applications.

CHARACTERISTICS

Fiber Content	Width	Printable Width	Weight
100% Polyester	56"	54"	7.50 oz/yd ² (254 gsm)

PERFORMANCE

Abrasion	Crocking	Flammability	Lightfastness
Grade 3 @ 60,000+ Wyzenbeek	4 - Dry; 3 - Wet	Cal TB II7 - Pass	Class 3 @ 1,200+ Hours

CARE

Cleaning Code

WS

Care Instructions

Spot clean only with water and mild detergent. Blot the stain gently with a cloth dampened with this solution. Remove any residual foam or suds by repeating the procedure with water only.

Rev 7.12.23

ECO CANVAS

Synthetic Fibers

Perfect for a myriad of products when a GREEN story is desirable. When treated with Springshield, it's useful for a variety of outdoor applications.

CHARACTERISTICS

Fiber Content

100% Polyester

Width

60"

Printable Width

58"

Weight

7.25 oz/yd² (244 gsm)

PERFORMANCE

Abrasion

Grade 4 @ 50,000+
Wyzenbeek

Crocking

4 - Dry; 3 - Wet

Flammability

NFPA 70I - Pass
Cal TB 117 - Pass

Lightfastness

Class 3 @ 1,200+ Hours

CARE

Cleaning Code

WS

Care Instructions

Spot clean only with water and mild detergent. Blot the stain gently with a cloth dampened with this solution. Remove any residual foam or suds by repeating the procedure with water only.

Rev 7.12.23

HEAVY LINEN

Synthetic Fibers

Multi-purpose fabric for drapes, bedding, and light furniture use. When treated with Springshield, it's useful for a variety of outdoor applications.

CHARACTERISTICS

Fiber Content	Width	Printable Width	Weight
100% Polyester	56"	54"	7.50 oz/yd ² (255 gsm)

PERFORMANCE

Abrasion	Crocking	Flammability	Lightfastness
Grade 3 @ 50,000+ Wyzenbeek	4 - Dry; 3 - Wet	Cal TB II7 - Pass	Class 3 @ 1,200+ Hours

CARE

Cleaning Code

WS

Care Instructions

Spot clean only with water and mild detergent. Blot the stain gently with a cloth dampened with this solution. Remove any residual foam or suds by repeating the procedure with water only.

Rev 7.12.23

RAFFIA

Synthetic Fibers

Raffia is a polyester version of the original African Palm woven raffia, providing performance texture at a popular price. It creates a dimensional, irregular surface and is a popular decorative fabric. Suitable for upholstery, pillows, accent pieces, and drapery. When treated with Springshield, it's useful for a variety of outdoor applications.

CHARACTERISTICS

Fiber Content

100% Polyester

Width

56"

Printable Width

54"

Weight

8 oz/yd² (271 gsm)

PERFORMANCE

Abrasion

Grade 3 @ 50,000+
Wyzenbeek

Crocking

4 - Dry; 3 - Wet

Flammability

Cal TB II7 - Pass

Lightfastness

Class 3 @ 1,200+ Hours

CARE

Cleaning Code

WS

Care Instructions

Spot clean only with water and mild detergent. Blot the stain gently with a cloth dampened with this solution. Remove any residual foam or suds by repeating the procedure with water only.

Rev 7.12.23



SPRINGS
DIGITAL



Rock Hill, SC | 29730

springs-digital.com

