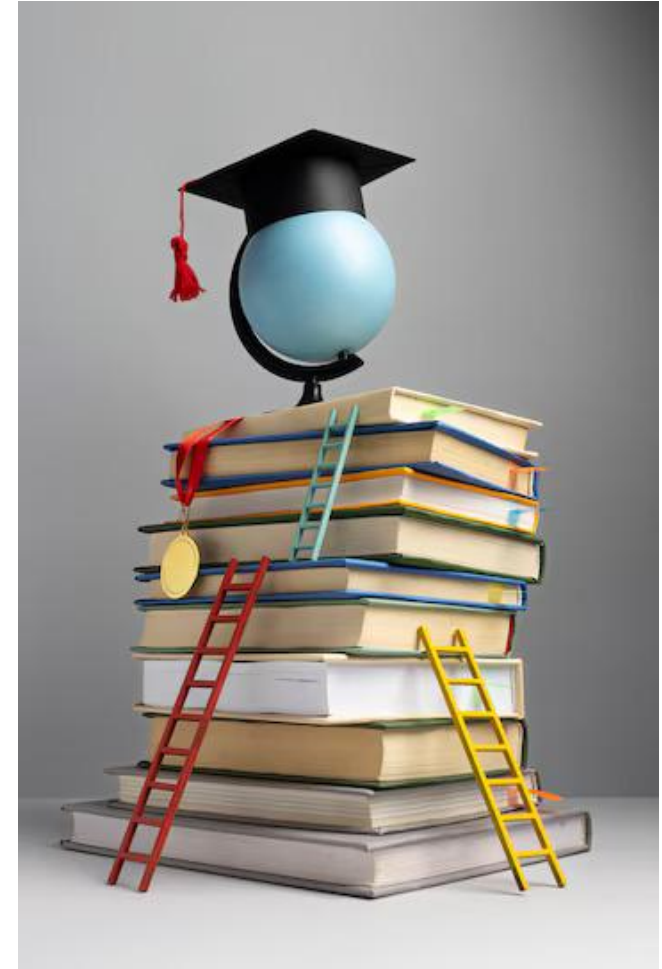


Over View

Pratidhee Foundation is established in the year 2020, is a charitable trust with the Motto of

“Equity in Health and Education”

dedicated to address Global Health disparities and connect the giver with the receiver and ultimately abiding to the Motto of Equity.



○ Objectives:

- Innovative Education Programs
- Integrated Theme-based Teachings
- Vocational Training
- To promote Health, Hygiene, Sanitation
- Women Empowerment Programs



Things we do....



- Provides Education support to the Underprivileged children
- Conducts Free Medical camps
- Organises Awareness campaigns to promote Health, Hygiene, Sanitation
- Enables Women Empowerment programs



Education support to the Underprivileged children



- To make Education accessible to all, irrespective of Child's socio economic status
- To provide Equal opportunity to learn and succeed

Conducts Free Medical camps

- To provide accessible healthcare by offering
- free medical consultations
- check-ups
- diagnostic services
- to people who might not have access to regular healthcare due to financial constraints



Organises Awareness campaigns to promote Health, Hygiene, Sanitation

- to create awareness about common health issues
- preventive measures
- healthy lifestyle choices
- including proper nutrition, exercise, and hygiene.



Pratidhee®
FOUNDATION

Enables Women Empowerment programs

- Enabling women to be
- Educationally
- Economically
- Physically
- Emotionally
- Politically
- Socially
- Culturally
- Empowered through various awareness campaigns, leadership programs and other activities



Pratidhee empowers female family members of Cancer affected patients through job-oriented courses, enabling them to achieve financial independence



Who are these children

- A unique initiative of Pratidhee Foundation focuses on children of **cancer-affected patients**.
- In cases where a patient succumbs to the illness, the foundation adopts their children, ensuring their education and healthcare needs are met.



Pratidhee[®]
FOUNDATION



Pratidhee **ADOPTED 120 CHILDREN**, mainly of Parents who are suffering by Cancer and supporting their Education and Health needs

Ways to Contribute?



Sponsor a Child's Education

- Contribute INR 18,450 to fully support one child's education for a year.

General Fund Contribution

- Any amount can be contributed to help multiple children receive the necessary support.

Corpus Fund for Long-Term Sustainability

- Donors can contribute to a Corpus Fund, ensuring sustained educational support for children impacted by cancer. The interest from the corpus will be utilized for ongoing expenses.

What are you contributing to?

We aim to raise INR 22,14,000 to support the education of 120 children



Breakdown of Educational Support (Per Child, Per Year)

- School Fees (Trust/NGO Schools per year): INR 12,000
- Uniforms (2 sets): INR 2,500
- Books & Stationery: INR 2,000
- Shoes: INR 850
- School Bag: INR 650
- Logistics and administrative Costs: INR 450

Total Cost Per Child: INR 18,450



What is the impact?

- Impact of Your Contribution:
- Ensures access to education for children affected by parental loss due to cancer.
- Provides emotional stability and encouragement to continue their education.
- Supports vocational training programs for families, empowering them to become self-sufficient.
- Helps create a secure and nurturing environment for children to thrive academically and socially.

Donations are eligible under 80G