



Community Magazine

Inside this issue

Deputy Chairman	2
Neighbourhood Watch	2
Neighbourhood Plan	3
Upwell Playing Field	3
Upwell Village Hall	4
Scouts	5
Greenfingers	6
Speedwatch	6
Fire Update	6
Of Dykes & Drains	8/9
LILY Events	9
TH Village Hall	10
Lakes End V Hall	10
Luncheon Club	12
Upwell Academy	13
Welle Cinema	14
Spinning & Weaving	14
UPC Accounts	16
UPC Meetings	16

UPWELL WEEKEND EVENT

UPWELL PLAYING FIELD - NEW ROAD (A1101) PE14 9AB

(Registered Charity 300425)

Saturday 8th July 6.00P.M. - 11.30P.M. **LIVE MUSIC** **LICENSED BAR AND BBQ**

PARTY IN THE PARK

Sunday 9th July 11.00A.M. - 4.00P.M.

CLASSIC VEHICLES - DISPLAYS - STALLS - BBQ - BAR



OVERNIGHT CAMPING AVAILABLE AT £5.00 PER PITCH
CLASSIC VEHICLE ENTRY IS FREE, PLEASE EMAIL clescokernow@yahoo.com TO COMPLETE AN ENTRY FORM

SATURDAY NIGHT - PARTY NIGHT!

6.00 P.M. - 11.30 P.M.

Dodgems, 50ft Ferris Wheel
Bouncy Castle, BBQ
Two Fully Licensed Bars

Music From:-
Al & Jules, Adlib,
Animal Bar, Sounds Familiar
and Out of Order

Admission - Adults £3.00 - Children under 16 go free!!

SUNDAY - ALL THE FUN OF THE FAYRE!

11.00 A.M. - 4.00 P.M.

Vintage and Classic cars
W.D.G.K
Emneth White Tigers Karate
Streetwise Upwell
Ryston Landrovers
BBQ, Licensed Bar, Tea and Cake,
Stocks, Bowling Alley
Ice Creams, Fun Dog Show,
Tug of War and Lots More!!

UPWELL WEEKEND EVENT

UPWELL PLAYING FIELD - NEW ROAD (A1101) PE14 9AB

(Registered Charity 300425)

Saturday 8th July 6.00P.M. - 11.30P.M. **LIVE MUSIC** **LICENSED BAR AND BBQ**

PARTY IN THE PARK

Sunday 9th July 11.00A.M. - 4.00P.M.

CLASSIC VEHICLES - DISPLAYS - STALLS - BBQ - BAR



OVERNIGHT CAMPING AVAILABLE AT £5.00 PER PITCH
CLASSIC VEHICLE ENTRY IS FREE, PLEASE EMAIL clescokernow@yahoo.com TO COMPLETE AN ENTRY FORM

**Copy Date for
September
edition:**

**Friday 1st
September**



FROM THE DEPUTY CHAIRMAN

Summer has arrived

(but no time for holidaying)!

Welcome to the Summer edition of our Parish Magazine, alas the normal opening commentary is interrupted as I do my best to fill in for Prue as she takes a well earned break.

As the sun finally disappears on yet another fantastic Bank Holiday weekend I've been contemplating the work we've done so far this year and the mountain of work that still remains. Thankfully the climbing

party is experienced, well disciplined and includes a number of dependable stalwarts who will help to share in the burden of our ambitions for the tasks ahead.

Our Parish Council AGM was held in May seeing Prue once again receive unanimous support in her election as Chairman for the coming year with myself being nominated and elected as Vice Chair for a second year, I'll confess to not quite knowing if it's an award for doing something well or a cynical punishment dished out by fellow councillors but needless to say I'll do my best to fulfil the role to the best of my abilities.

The bus shelter for the bus stop at the top of Townley Close is ready for delivery, we're waiting for Highways to organise a team to complete the new base and installation, fingers crossed this will be arriving very soon.

The new drainage in Newbridge Road appears to have finally been completed and at last the Trod has been installed along this section of road providing a safe pedestrian route.

A number of councillors from both Upwell and Outwell have continued to hold the Police to account in an effort to reduce the number of burglaries and other crimes in the Parish, this combined with the excellent work of Jane Sutton in hosting our Upwell and Outwell combined Neighbourhood Watch Facebook page:

<https://www.facebook.com/groups/upwelloutwellneighbourhoodwatch/>

appears to be having an effect with an increased police presence and a feeling of decreasing criminal activity.

Many of you will have noticed the unfortunate damage to railings opposite Tweeds Butchers, the council is working hard to ensure that these are repaired both quickly and in keeping with the existing railings, it's perhaps not as straight forward as it might at first seem as the existing railings are not readily available and Highways preference is for a more 'economic' solution. Needless to say the council is on the case.

Prominent in our forward planning is of course the Neighbourhood Plan which continues apace, our NP committee includes a mix of Parish Councillors and Non-Councillors who are eagerly consulting with members of the community through key community groups. Our quarterly Have Your Say meeting held in May at Three Holes included consultation on our NP with an excellent presentation provided by committee member Sue Lowe prompting some fantastic feedback from those who attended.

If you haven't heard from the Neighbourhood Plan team yet please don't panic, there will be lots of opportunities ahead for you to get involved and have your say on how you think Upwell should develop over the coming years.

To finish I'd like to remind everyone of the invaluable work which goes on throughout our Parish in organising and running events to raise funds for some of the amenities we have, whilst we all have busy lives and look forward to our summer holidays please do consider a trip to Lakes End to attend the Sunday Car Boot or Tuesday Auction or dropping in at one of the Three Holes Village Hall film presentations and of course the Thursday Car Boots at Upwell or the upcoming Yard Sale, Party in The Park and Summer Fayre.

The list of events is not exhaustive there are many other things going on as well and I'm sure that further details will be included in the latter pages of this magazine, remember that the events are organised by volunteers, just a short amount of your time is needed to show your support.

Richard Melton



**OUTWELL & UPWELL
NEIGHBOURHOOD WATCH**
WORKING TOWARDS A SAFER COMMUNITY

JUNE UPDATE

It gives me great pleasure to report that the scheme now has 495 members and is growing daily.

Neighbourhood Watch has never been more relevant or more necessary than it is today. Our communities, both real and virtual, rely more than ever on a close relationship between the public and the police and this great organisation does more than most to share the messages that keep us safe.

Not yet a member of Neighbourhood Watch?

There has never been a better time to join Neighbourhood Watch. We have distinctive window stickers, dedicated volunteers and up-to-date advice to help stop you being a victim of crime. Free updated Neighbourhood Watch stickers are currently available from Coversure Insurance office, The Crown Pub, Bloom & Wake filling station, Outwell Post Office, Lakesend Village Hall, and Upwell Playing field pavilion. Please show your support for the scheme and display a sticker prominently on your window or door. We now have six volunteers for the Outwell Speed Watch team and they will be shortly embarking on their training and once completed will be out and about in the village trying to mirror the excellent work that the Upwell Speed Watch team already do. Lakesend are also interested in setting up a team and if anyone is interested in volunteering please do let me know.

Thank you once again for your support, you have and will continue to make a real difference to our Neighbourhoods.

Jane Sutton

Outwell & Upwell Scheme Co-ordinator

Upwell Neighbourhood Plan

One of the unintended side effects of the recent General Election was that the Neighbourhood Plan legislation was rushed through before Parliament was prorogued. This means that a properly constituted Neighbourhood Plan is now a legal document which must be consulted and adhered to before any planning permission is granted in the area covered by the plan (i.e. Upwell Parish).

The Neighbourhood Plan sub-committee has met several times over the last 8 months. Indeed it now meets monthly on the 2nd Monday of the month in the Village Hall. These meetings are open to the public, if you want to make a specific point please turn up at 7:00pm. You may have to sit through a lot of tedious admin along the lines of "Who is going to talk to X, and when?", or "Has X written to the grant body?", but your questions or comments will be answered or noted as necessary. The group spent a whole Saturday receiving training on what is required of a Neighbourhood Plan, a day which despite the initial scepticism of some (myself included), proved to be extremely informative and useful.

We have now moved on to the necessary information gathering stage required to produce a Plan. This involves trawling through

Government statistics, researching such things as Listed buildings and other archaeological sites, and formally asking residents of the Plan area for their opinions of what they would like to see in the Plan.

As well as the Questionnaire that was produced at the tail end of last year, groups such as the Girls' Brigade, The Luncheon Club, The Welle Creek Trust, the Scouts, children at Upwell Academy, Three Holes Village Hall members, members of the local Internal Drainage Board etc, have been given a presentation on the Neighbourhood Plan followed by a question/answer session. If you belong to a group which you think might have an opinion which we have missed please contact Prue Lester and ask for us to visit you.

The next stage, currently scheduled for September or thereabouts will be for a series of public exhibitions of proposals for the actual Plan. After these have been held the actual Plan will be written.

Then sometime next year the Plan will be published and everyone in the Parish will be invited to vote whether it should be formally adopted,

Jeremy Teague

UPWELL PLAYING FIELD COMMITTEE

Registered Charity 300425

The fund-raising year kicked off with a Horse and Pony Show Easter Saturday, attendance good, weather reasonably good. Inhand judge was Carole Bartram and Ridden judge was Emma Scotney – they went on to judge Supreme Champion Pip Read with her Black and White Shire Mr Fox, and three year old Poppy Ireland was reserve Supreme Champion. Unfortunately, May 20th show was cancelled due to all the rain we had prior to the day, on H & S grounds, this was cancelled Friday afternoon – our next one is June 17th when the committee hope to see plenty of sunshine. Our judges for the day will be Paula Ryan judging inhand and Carole Bartram judging Ridden classes – first class starting at 9.30am. The committee have been fortunate to have Russell's Fresh Meats and Family Butchers sponsor our Supreme and Reserve Supreme rosettes and trophies for 2017. Sponsors for June show are Goldings Feeds, Gemma Newton Farrier, Roger Golding and sponsor of the Inhand and Ridden Championship is Neddy's Rug wash. Upwell Playing Field Committee Horse and Pony Show are fortunate to have Saracens Horse Feeds sponsorship for the season (local stockist is Goldings Animal Feeds Outwell).

Carboots have been busy – and the weather good – our pitch fees remain the same as previous years but refreshments have a very small increase in cost. Do pop in on a Thursday morning you may bag a bargain, very nice garden plants and fruit and veg.

A joint venture with Upwell Bowls and Upwell Hall the Horse Race evening will have been held on the 10th June – hopefully you will have supported this event by sponsoring a horse,

jockey or trainer. This event raised in the region of a £1,000 last year for the three organisations for ongoing maintenance etc.,

Our own "big" event is 8th and 9th July – Party in the Park is Saturday 8th, with music from various groups, BBQ, two bars, Dodgem cars Ferris wheel etc., admission will be £3 adults and children under 16 free (NOT £1 as previously advertised). The music starts at 6pm through to 11.30pm, **BRING YOUR OWN CHAIRS, NOT drink – IT WILL BE YOU CONTRAVENING THE LICENSING LAWS.** See you there.

Sunday 9th is our annual summer fayre day – with W.D.G.K., Vintage and classic vehicles, Henna Tattoos, Face painting, refreshments, stocks Fun Dog Show with rosettes, raffle, stalls, Bowls Club bar will be open - plus lots more! Time is 11.00am – 4pm

Over the last week or so Community Service/Unpaid Workers have been working around the Playing Field – and a very good job they have done. See my Facebook page with photos. They have painted our car park posts, cut hedges, dug over our garden, erected a fence to repair a hole in the hedge made by inconsiderate people who cannot be bothered to use the proper gate, strimmed the untidy area in the bottom corners and had a general tidy up. Without CS a lot of our work would not get done as we do not have the manpower. Tomorrow 6th (weather permitting) they hopefully will be painting our green storage container and installing a bright green litter bin kindly donated by Wisbech Lions – hopefully everyone will use it!

Ros Shorting

Upwell Village Hall News

Not much to report from Upwell Hall; we will have had the joint **Race Night** with Upwell Bowls and Upwell Playing Field Committee on Saturday 10th June. If you have not attended one of these you have missed out BIG time!.. Lots of fun and hopefully lots of money will have been raised for three local organisations that rely heavily on voluntary help from their committee members, both manually and financially.



Yard Sale 2nd July Hoping for sunshine, this will be the third year we have organised this event – main organisers Brian and Linda Carr have been busy collecting names and addresses – for just £5 per yard with all proceeds going to Upwell Hall. Some yard owners made over £100 last year – just clearing out sheds, cupboards and lofts of unwanted/unused items. All roads being used for the yard sale will be given to EPEGS for emergency services.



Gardeners' Question Time 3rd July
 After two years of waiting, we have received contact from BBC Radio 4 GQT – Gardeners' Question Time – tickets are £5 each, available from Brian Tweed or Ros (773604). Doors open 5:30pm, recording starts at 6:30pm. Tea Coffee and Biscuits will be available. I have no idea who will be on the panel.



This time of the year is the Wedding season – and children's parties and christenings. We have several booked plus all the weekly hirers still in full flow. Upwell Hall is an ideal venue if you want the charm of a vaulted ceiling for weddings, or a high ceiling for a bouncy castle! Fully licensed bar, able to provide seating at tables for 150/160 for wedding receptions etc. See the Line dancers enjoying their weekly session at Christmas! Diary date: Christmas Craft Fayre Sunday November 5th!

All enquiries for Upwell Hall bookings to Ros. Shorting on 01945 773604 or email: upwellhall@talktalk.net



Upwell Jazz Club 2017

Christchurch Community Centre (Sat Nav PE14 9LL)

Sunday 30th July

Guests: Derek Clenshaw – trombone
 Tom Melvin – vocals
 Nigel Portass – piano
 Dave Hawthorn – drums

This session sees the return of the ever-popular Derek Clenshaw on trombone and Tom Melvin on vocals performing an eclectic mix of laid-back standards from Burt Bacharach to Cole Porter.

We extend a warm welcome to Dave Hawthorn on drums for this session.

Bar, fresh rolls, crisps and savouries available
More information from Nigel Smith on 01945 773121
Time: 12.30pm - 2.45pm Admission: £5.00 Accompanied under-16s Free

Upwell Jazz Club 2017

Christchurch Community Centre (Sat Nav PE14 9LL)



Sunday 24th September

Guests: Tim Eyles – trumpet and vocals
 Nigel Portass – keyboard
 Dave Jackson – drums

A warm first-time welcome to Tim Eyles and Dave Jackson to Upwell Jazz Club. These two very experienced players will entertain you with both classics from the great jazz era and more modern compositions.

Time: 12.30pm - 2.45pm
Admission: £5.00 Accompanied under-16s Free
More information from Nigel Smith on 01945 773121
Bar, fresh rolls, crisps and savouries available



I am a patrol leader at 12th Wisbech Scouts and, as part of my personal challenge badge for my chief scout's gold award, I will be writing a report on what us scouts have been doing the past few months. Scouting offers a wide range of activities to young people from camping in the snow, to making s'mores! Whether it's camping, cooking, baking, climbing, taking day trips, movie making or playing wide games. Scouts has something for everyone. So come and see what we've been up to!

In February, the scouts went camping at Belchamps Scouts Activity Centre. When the scouts woke up in the morning, they were surprised by the white sheet covering their tents. It had snowed! Whether the weather was a good or bad thing is open to debate but they all had fun. The scouts had many activities available from tomahawk throwing, to driving a digger. Some of the more tolerant scouts even watched a live demonstration of squirrel and Pigeon skinning/plucking and cooking. They even got to try some afterwards! We all came together for the campfire where we sang campfire songs with other scout troops and we all had a great time.

The scouts also visited Fenrock bouldering centre where they got to scale the climbing wall with no ropes. There were no injuries, however, everybody's hands ached afterwards. The scouts learnt how to break their fall, should they ever unexpectedly come off the wall. All the scouts had a fantastic time and it is definitely somewhere they would like to visit in the future.

Some scouts attended a gliding trip where they had the opportunity to fly in a powered glider. All the scouts took control of the glider in the air and they all braved the flight for the 20 minutes at 3000 ft! The trip was part of the scout's air activities badge.

The scouts gathered at the Wisbech aviation museum to continue their air activities badge. They were able to explore the cockpit and nose of the planes and were also allowed to press as many buttons as they liked, much to their delight! The scouts learnt lots about the planes and their history and everyone had a great experience.

Also a special mention for a fellow scout Joseph, who was awarded his chief scout's gold award back in February. The award took skill and lots of determination completing each objective and it was a great achievement that he should be proud of.

So that's all and I hope you know more about scouts and understand a bit more about what we do. Fancy becoming a cub, scout or even a leader? Then come along and join us on Wednesday evenings [term time] from 6:00pm till 8:00pm at the Methodist Church Hall.



Chavi Sullivan (PL)



UPWELL FOSA

SUMMER FAYRE

ADULTS 50p SUNDAY 2ND JULY 12-4 PM KIDS FREE

UPWELL SCHOOL PLAYING FIELD

INFAIBLES STALLS RAFFLE VEHICLES CRAFTS GAMES BAR BBO REFRESHMENTS

PROCEEDS TO UPWELL ACADEMY LIVE ENTERTAINMENT CAR BOOT

Upwell Jazz Club 2017

Christchurch Community Centre (Sat Nav PE14 9LL)

Sunday 29th October

The Alan Norris Big Band 2017 Tour
New York, Paris, London, but mainly Christchurch

Following on from 2016's hugely successful one day tour of Three Holes the band are back to entertain you with a range of music from the Great American Songbook era through to contemporary big band concert numbers, complete with their singers.

More information from Nigel Smith on 01945 773121
Bar, fresh rolls, crisps and savouries available
Time: 12.30pm - 2.45pm Admission: £5.00 Accompanied under-16s Free

The UK's first guaranteed banjo-free jazz club

GREENFINGERS GARDENING CLUB

Today, believe it or not, is a very good day (June 1st). The sun shines, the birds sing and hopefully Daisy, our usual correspondent, will be home from hospital.

Our evening visit to Rachel's Plants at Tamar Nurseries was very pleasant. Following a short talk by Rachel's husband we now know what to do with the bugs attacking our precious plants (not a size 8 shoe) and most members went home having purchased well.

The outing on May 21st to Harlow Carr was a success. We all enjoyed the efforts made by RHS gardeners to create such

a beautiful place in which to wander.

On August 15th the club will celebrate 25 years of existence. The committee will be arranging a garden party but more on this to follow.

Meetings are held at 7.30 p.m. on the 3rd Tuesday of the month at Upwell Methodist Church Hall. New visitors/members are always welcome. Please phone me on 01945 772247 if any further information is required.

Val Payne

SPEEDWATCH UPDATE

You may have not noticed us out and about recently – there is only so much that three people can do, and we have had a bit of equipment trouble recently. However the latter has been fixed so we will be out upsetting the idiots and keeping the rest of you safe on the roads round Upwell again soon.

A group of people in Outwell have decided to set up a separate Speedwatch there – we wish them well. But for those of you who habitually speed through the villages watch out. There will soon be two Speedwatch Teams and a fixed camera recording you breaking the law: If you try hard you could lose your driving-license completely between one end of the villages and the other, as well as most of a month's salary!

Talking of the fixed camera, it has recently been discovered that one of the posts has been leaning heavily. Possibly the result of subsidence, possible as an act of vandalism. This has

given us the opportunity to re-site that particular post (and possibly some of the others), so just when the habitual speeders have got used to braking at a particular point we will be moving it!

Norfolk Police have recently announced that throughout June they will be running a special campaign looking out for Drunk and Drugged-drivers. Anyone stopped for any traffic offence will be given the opportunity to blow down the little tube!

That's it for this month: If you want to help keep your roads safe please phone either Bob or Jeremy (see advert for phone-numbers), and please remember to drive safely – the life you save may well be someone important to you!

Jeremy Teague



Outwell Fire Station Update

It has been a very positive month for us again at Outwell Fire Station. We have responded to three incidents in the last 10 days, two involving RTCs: one a significant one involving three elderly ladies who had collided with a stationary car near Ali's Kebabs which then flipped it on its side. A lot of resources responded to that with us to safely extricate them. We then had another RTC involving a car crashing into a field in Nordelph. Luckily only one of the five occupants was injured.

The third involved a family who put what they thought were cold BBQ embers onto a pile of rubbish next to a fence. As you can imagine this then ignited. We arrived to find two householders putting water on it from hosepipes to prevent the fence being ruined. So could I remind you all; during the summer season please ensure all bonfires and BBQs are totally extinguished before moving them.

Our availability is now in excess of 40%. I expect it to be up to 60% by then end of the summer holidays and then approximately 80% by Christmas. When you consider that only fourteen months ago, we only had an active crew of two, the threat of closure looming over us and station availability of just 2.5%, we are now starting to see the fruits of all our efforts. I now have an amazing hardworking and dedicated crew who will do us all proud.

You will see us within the community more in the coming months: attending both Beaupre Primary and Upwell Academy Schools' fetes, as well as performing various training exercises locally. So feel free to come say hello, especially if you know anybody who would be interested in joining our team.

Watch Manager Glen Gates Mob: 07946331359 Email: glen.gates@fire.norfolk.gov.uk

Outwell Fire Station, Churchfield Road, Outwell, PE14 8RL



Are you 65 or over? Need information or advice on things to do, getting out and about, staying safe and well or caring for someone, then...



Living Independently in Later Years
a directory of services, activities, advice and guidance for older people living in West Norfolk

Available online at www.asklily.org.uk
or by calling 01553 616200



Borough Council of
King's Lynn &
West Norfolk



YOUR SPEEDWATCH NEEDS YOU!



Fed up with people speeding through the villages?
Got a bit of time to spare?
Volunteer for the Speedwatch team:
The life you save may be someone you care about!

Phone Bob (01945 772356), Jeremy (01945 774256) or
e-mail Jeremy on upwellspeedwatch@gmail.com

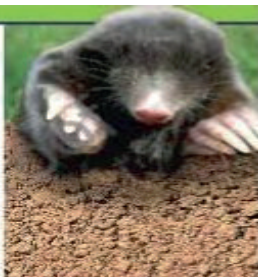
HAPPY WAGS



Dog Walking and at home pet feeding for cats, dogs, rabbits etc on a regular or one off basis in Upwell and Outwell area. Give Janet a call to discuss on 07771 885036.

www.dandjtransport.co.uk
AGGREGATE SUPPLIES
01354 740249

- SAND, GRAVEL, BALLAST
- GRANITE, BARK, SLATE
- TOPSOIL, LIMESTONE OPC
- BRICK BATS & TARMAC PLANINGS
- DELIVERD OR COLLECTED
- SAME DAY/NEXT DAY DELIVERY
- LOOSE OR BAGGED
- FROM 1 TONNETO 29 TONNES
- MUCK AWAY SERVICE



01354 740249

CHIROPODY & BEAUTY BY JOANNE SEATON

MSSch MBChA BABTAC HPC registered

- ❖ Over 25 years' experience
- ❖ A wide range of Beauty treatments available
- ❖ Luxury Chiropody treatment
- ❖ Neals Yard Remedies
- ❖ Award winning Matis skincare
- ❖ Candles & other quality gifts available

By Appointment Only

Villeneuve · Basin Road · Outwell

01945 774022 / 07881432379

joanne@villeneuve.plus.com

www.joanneseaton.co.uk

COULD YOU BENEFIT FROM INDEPENDENT FINANCIAL ADVICE?

If you can answer 'yes' to any of the following questions you could benefit from independent financial advice.

- 1 Could your savings and investments be working harder for you?
- 2 Are you worried you aren't paying enough attention to your plans for retirement?
- 3 Worried about the wellbeing of your family should the unexpected happen?
- 4 Have you taken out life assurance or an income protection policy in the last 5 years?
- 5 Have you invested money into an investment or pension without a review from the provider in the last 6 months?
- 6 Do you like the thought of a flexible advice service that can fit around your lifestyle and meet your needs?

Why not enjoy the peace of mind that comes from receiving jargon-free advice on the most appropriate financial products for your personal circumstances.

For a free initial meeting contact: **Colin Freer**

T. 07738 120256 F. 08452 991298 E. ColinFreer@thinkpositive.co.uk

Salts Road, West Walton, Wisbech, Cambs, PE14 7ED

The value of investments and pensions can fall as well as rise, and you could get back less than you invested.

Positive Solutions (Financial Services) Ltd, is authorised and regulated by the Financial Conduct Authority, Registered as a Limited Company in England and Wales No. 3276760. The Financial Conduct Authority does not regulate advice on some taxation matters.



OF DYKES AND DRAINS

Some visitors to this parish, and even, it seems, the odd incurious resident, do not know that until the 1600s the whole area was flooded every winter and often throughout most of the year. There was no solid dry land at all; just about the most that could be done agriculturally was the summer grazing of livestock, and then, only in good years. Attempting to live here, even on the higher ground, was only undertaken with the certainty of being flooded out from time to time (e.g. in the most extreme case the settlements of modern-day Welney, Lakesend and part of Three Holes had to be abandoned for a hundred years around 200AD). The altitude of the land is, if anything, lower now than it was then. Parts of the parish are below sea-level, and none of it is much higher.

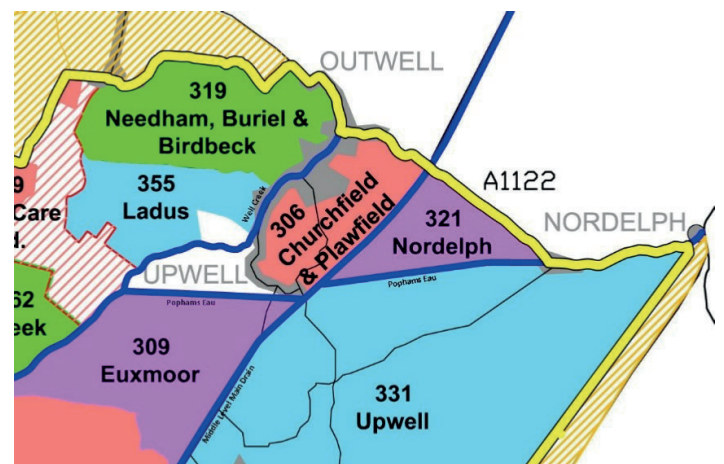
Although several attempts had been made to drain the area from the Roman period onwards, around 1620 a massive drainage scheme was embarked upon to fully drain the Fens. The result is that this has become an area of outstanding arable productivity due to the rich peats and alluvial silts which were deposited throughout thousands of years of flooding. Drainage was accomplished firstly by the building of banks, not only to keep out the sea (some of these date back to the 13th Century, such as Edge Bank between Outwell and Marshland), but also to confine the rivers – in the 1600s the Welney River (named the Old Croft River by the Ordnance Survey) was 100 yards wide in the summer and a mile wide in the winter where it ran through Upwell.

Banks were just a start: they helped stop inundations by the sea and the fluvial floods of rivers overflowing, but did not dry out the land. This was accomplished by the digging of innumerable man-made watercourses, ranging from the Popham's Eau (1608) and the Middle Level Main Drain (1850s) down to the dykes (as they are known by Fenmen – others call them ditches) which bordered virtually every field and plot of land. This became a massive drainage matrix, all carefully constructed so as to direct surface water to ever lower and larger watercourses and eventually out to sea. As the land dried it shrunk, the peat fens especially. Drainage by gravity was no longer possible – some of the land was now below sea level – and so water had to be pumped into the rivers. At first this was by wind pumps, then steam, then diesel and nowadays by electricity. All of the Middle Level, as far inland as Farcet near Peterborough, now has its surface water evacuated to the River Great Ouse and then to the sea by the massive pumps on the Middle Level Main Drain at Wiggshall St Germans. This is the second largest pumping station in Europe, capable of shifting 100 cubic metres of water per second. Thanks to this system, the Middle Level is termed a Defended Floodplain.

As the centuries went by the importance of some of the smaller dykes lessened: the overall system became so efficient that the land was no longer saturated and could absorb most of the normal precipitation (although locals still refer to February as Fill-Dyke). **However, we are currently undergoing climate change:** torrential downpours like that of August 8th 2014 will almost certainly become a more regular feature. That rain storm resulted in much localised flooding. The most affected areas included those that have lost their network of smaller dykes: many have been filled in over the years, deemed by the complacent to be no longer necessary. Even where these had been piped before being filled in (as they all should), the sudden volume did not have the capacity of the old dykes in which to collect before running off. There were of course other causes: for

example, flooding in Outwell was caused by a dumped three-piece suite blocking a Board Drain.

So, what do **THEY** do about flood prevention? Well, the Fens, as well as other parts of the UK, are divided into areas administered by Internal Drainage Boards. Upwell Parish falls within areas controlled by three: the **Churchfield and Plawfield, Needham and Laddus** (*the old Needham Burial and Birdbeck/Ladus areas are now combined*) and south of the Middle Level Main Drain, the **Upwell IDB**. All of these fall within the area administered by the Middle Level Commissioners, who are directly responsible for the main rivers and odd small areas not included in an IDB. All IDBs have Bye-laws and responsibilities - which can be seen on the MLC website www.middlelevel.co.uk. The Bye-laws among other things prohibit anyone from altering- or building within-nine metres of a Board Drain without MLC permission (20m in the case of a main river). The Bye-laws also prohibit any works within any watercourse – including Non-Board (or Private)

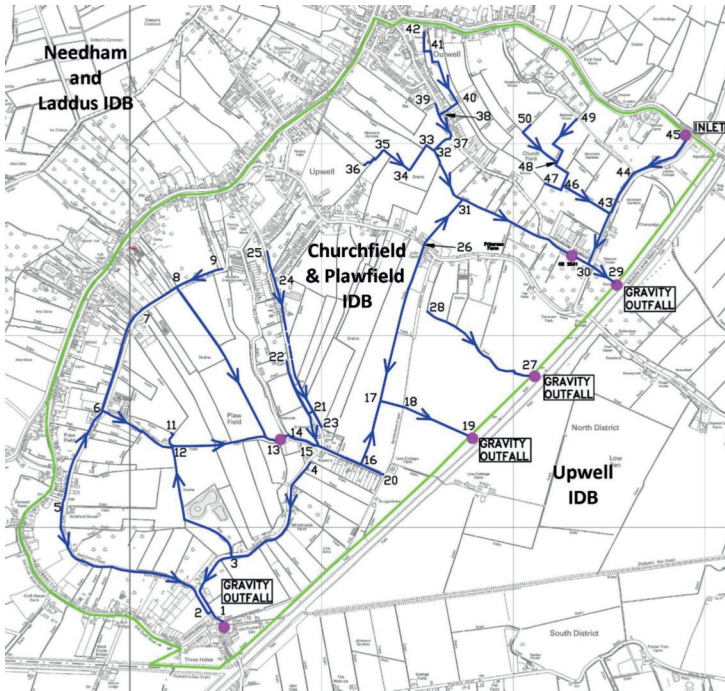


watercourses without the permission of the MLC and/or the IDB in whose District it falls.

The **Churchfield and Plawfield IDB** discharges surface water by gravity at four points into the Middle Level Main Drain (there is also a gravity inlet from the Well Creek should water need to be brought into the system) – see plan. The **Needham and Laddus IDB** has two gravity outfalls into the Old River Nene at March Riverside and two gravity inlets from the Well Creek, which is six feet higher. **Upwell IDB** covers more than twice the area of the other two combined and is much more complex topographically. Consequently, in addition to six gravity outfalls and one gravity inlet, it also has five pumping stations.

The IDBs are funded by land drainage rates on agricultural land, and where land is built upon, a Special Levy from the Borough Council Tax paid by all householders. To keep ratepayers' contributions to a minimum, the IDBs nowadays only maintain an essential arterial network of Board Drains – marked blue on the plan. Private drains (or dykes) are the responsibility of the landowner (in cases of different landowners on each side, responsibility is shared and the boundary is usually deemed to be the middle of the watercourse). It is the responsibility of a landowner to get his surface water to the nearest Board Drain from whence the IDB's responsibility begins. It is also the responsibility of the landowner not to obstruct the passage of his neighbours' water to a Board Drain. New developments, especially on green field sites, may well need carefully planned schemes to convey water to the nearest Board Drain. There is an

established procedure by which a scheme conforming to the Board's requirements can be agreed. Until the written agreement of the Board is obtained, the landowner – not the developer - will be in breach of the drainage bye-laws, which is a criminal offence.



Drainage Boards are non-statutory consultees in the planning legislation: although planning applicants are not forced to consult them, the eventual landowner will be in breach of the law unless they have a system conforming with the Board's requirements. Recent legislation includes the Water Framework Directive, with its requirement for SuDS (Sustainable Drainage Systems). These require forward planning for the maintenance of drainage systems into the future. **By far the simplest approach is for planning applicants to avail themselves of the pre- and/or post-application consultation service offered by the MLC.** Bear in mind that, for example, a soak-away system that conforms with Building Regulations will not necessarily comply with SuDS requirements. In any case, soak-aways are ineffective once the land around them is saturated.

LILY advisors visit community events

The popular LILY (Living Independently in Later Years) Advisors have now been out in the community for six months.

They have been having regular stands in all the libraries locally and have been out and about giving talks and taking information out all over West Norfolk and Swaffham.

They hold regular sessions in GP surgeries and hospitals and will also be having information stands in Alive Leisure Centres.

The 29 advisors are from four local charities; West Norfolk Befriending, West Norfolk Carers, West Norfolk Deaf Association and West Norfolk Mind and have a wealth of knowledge and experience.

They are also available for home visits to help older people, their families, friends and carers to find information, local organisations and social activities, using mobile technology.

Details of where the advisors will be can be found in the 'LILY in

Whilst it is obvious that building on a site will not increase the amount of rain falling on it, perhaps it is not so obvious that once water cannot permeate naturally into the whole of the surface area it will run off almost instantly and thus needs to get into a waterway system if local flooding is to be avoided. The most extreme example of this I can think of is that before Milton Keynes was built, it took heavy rain water 2-3 **weeks** to permeate the ground, get into rivers and find its way to the Ouse Washes at Earith. Now it takes 2-3 **days**, and the flood comes all at once instead of gradually – thus overwhelming the watercourses and resulting in instant flooding; whereas once we might have had just a rise and fall in river levels.

So, what is the message for the average householder? Consider that any dyke on your land was dug **by hand** a long time ago. Given the effort required, is it likely that our forebears would have done this out of anything but necessity? Every dyke was put there for a reason. It may be carrying your neighbours' water to a Board Drain even if it is not doing very much for your own land. It has a capacity far exceeding any pipe with which it might be replaced, and thus can be a useful temporary reservoir for storm water. You may not interfere at all with a Board Drain, and I suggest you think very seriously about the consequences of altering any private dyke.

If you do decide to pipe and fill or even place a culvert in a private dyke on your land, bear in mind the following:

- You need the written consent of the MLC/IDB before you start work. You are committing a criminal offence unless you have this consent. Application forms and guidance are on the MLC website as well as a plethora of information.
- If it is on your boundary it will usually be part-owned by your neighbour, whose agreement must be obtained. NB. Road verges are mostly owned by the County Council/Highways Authority, and they may count as neighbours.
- If it passes through your land you must obtain the agreement of those whose land it passes from and to.
- You must use pipe of a suitable diameter and material.

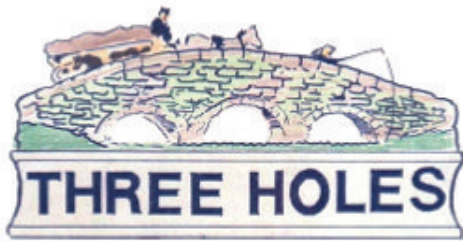
Steven Calton

your community' section of the LILY online directory.

LILY Advisor, Lorraine, from West Norfolk Deaf Association, said "People often say they are not old enough for LILY but when they see the wide range of information and all the social activities on the online directory they soon change their mind! They don't realise what support is available for them and they love that they can talk to us face to face."

The LILY online directory includes information on health, money matters, looking after someone, volunteering, dementia guidance and help for older people to continue living safely and independently in their own home.

To request a LILY Advisor to give a talk at a group, or to find out more about LILY, please call 01553 616200. The online directory can be found at www.asklily.org.uk



Three Holes Village Hall & Playing Field

Charity no. 304483

Main Road, Three Holes, PE14 9JR.

www.threeholesvillagehall00.org.uk

Why not hire

THREE HOLES VILLAGE HALL for your event?

Facilities include:

- Capacity of up to 200 people
- Stage
- Well-equipped, modern kitchen
- Digital projector, large, electric screen
- PA system, DVD player, CD player, Tuner, mic's, mixer, amplifier.
- Broadband/BT WiFi (ask for details)



More details available at:

www.threeholesvillagehall00.org.uk

Call 01945 773961, 01354 610316

We are delighted to say that, thanks to three grants given to the Hall, we will be able to make improvements to the men's toilets plus a spruce-up for the ladies! We were awarded £3000 by the Shelroy Trust, £1570 by the Love Norfolk Fund and £476 by the Norfolk Village Halls Fund.

Following thanks to the previous members, the new trustee committee was voted in at the AGM on 24th April. Thanks were given to Frank Humm who stood down as Chairman. Frank had been a trustee and the representative for the Upwell Parish Council for many years and his help and support has been much appreciated – he will be missed.

The new Trustee Committee members are Susan Lowe (Chair), Brian Ranger (Vice Chair), Helen Hartley (Secretary), Geoff Fox-Noble (Treasurer), Eddie Manning (Bookings Officer), Hilary Ranger (Welle Cinema Co-ordinator), Eileen Leeman (Acorn Club Rep), Rowan Fox Noble, Richard Melton and Brian Carr (Upwell Parish Council Rep). Pam Russell also attends meetings as Rep for the Short Mat Bowls Club.

Special thanks are due to all our volunteers for their ongoing help and support and particularly, now the growing season is here, to Andy Jackson and David Forth. Andy and David are helping out with the regular grass cutting on the playing field and around the hall.

Lakes End Village Hall – A Forgotten Gem

Far from forgotten in the minds of the Lakes End Village Hall Committee and their loyal band of willing volunteers who continue to work hard to maintain, update and improve their beloved hall. The list of tasks completed and those ahead seems endless but all seem to relish the challenge.

Hall users are increasing with regular events including Bingo being held on Saturday nights at 7pm, Lakes End Happy Circle every second Monday from 1330 and Auctions on Tuesdays with buyers viewing from midday. The hall is available to occasional hirers at just £45.00 per day for non-villagers and a reduced rate of £35.00 per day for residents of Lakes End.

Monday 10th July will see free cups of tea or coffee available to over 55's looking to meet up with others from Lakes End and surrounding villages, doors will open on the day at 10am and thereafter every other Monday.

Recent months have seen a newly refurbished Kitchen and The Norfolk Community Service Team agreeing to allocate the Hall hours to assist in some of the practical elements including general maintenance and decoration but it doesn't stop there, as the Committee continue to raise funds to enable the replacement of the Hall Roof and eagerly search for goal posts for the Lakes End Playing Field.

The Village Hall committee have for the first time in many years invited the Parish Council to hold their Monday 4th September Parish Council Meeting at Lakes End to show off their hard work and allow Lakes End villagers an opportunity to raise issues which specifically affect Lakes End residents.

If you're interested in hiring the hall, getting involved in helping the committee or want to know more about the work being done please contact Committee Chairman Dennis Martin on (01406) 363 443 or 07751 491 268.

To keep up to date with everything happening at Lakes End Village Hall please follow us on Facebook.

Sam Hester

Lakes End Village Hall & Playing Field Committee



THREE HOLES SHORT MAT BOWLS CLUB

Every Thursday 7pm to 9pm at Three Holes
Village Hall

Come and join us you'll be very welcome!

£3.50 includes tea/coffee

Tel. 01945 773561



HARNWELL ELECTRICAL LTD

Electrical Engineers & Contractors
Industrial, Domestic, Agricultural & Commercial Installations.



THE GRANARY, ST PETERS ROAD, UPWELL,
WISBECH, CAMBS PE14 9EH
Telephone: (01945) 773207

A's Florals
Funerals, Weddings & Special Occasion Flowers

07442017798
Email: angelamayes21@yahoo.co.uk

OFFERING SERVICE AND SUPPORT TO THE BRITISH FARMING INDUSTRY

STITCHER SYSTEMS - WEIGHING SYSTEMS
BAG PLACERS - PALLETISING SYSTEMS

AGRIMECH

WWW.AGRIMECH.CO.UK 01354 638 222



Upwell Royal British Legion

A new committee has been elected to run Upwell British Legion. We are offering the premises to groups and societies at a competitive rate.

Anniversary's, Weddings, Wakes, Christenings & Children's Parties, Bar & Separate Meeting Room

Please contact Alison on 07519949529 or Pauline on 01945 773276

Charity Number 219279



- Crime
- Family
- Property
- Employment
- Personal Injury
- Care for Elderly
- Dispute Resolution
- Wills, Probate & Trusts
- Company & Commercial

- Convenient town centre location
- Home visits may be available

mcp

SOLICITORS

Tel: 01945 464331

8 York Row, Wisbech, Norfolk PE13 1EF

www.mcp-law.co.uk

Crown Service Station (Outwell) Ltd

MOT's Servicing Repairs

Stuart, Kevin and Michael will be pleased to help you with any of your motoring problems. Give us a call or pop round.

We are now situated on Isle Road, Outwell, PE14 8TD

Class 4 & 7 MOT's now undertaken

01945 773553

garage@thecrownlodgehotel.co.uk

A.R. CLINGO FUNERAL DIRECTORS

- † Family Independent Business
- † Private Chapel of Rest
- † Personal Attention
- † 24 Hour Service

Full estimates given at all times

Pinfold House
St. Peter's Road
Upwell, Wisbech

Phone: 01945 772502

Golden Charter
Funeral Plans





DO YOU FEEL VULNERABLE OR ISOLATED?

DO YOU HAVE MOBILITY ISSUES OR ARE YOU PRONE TO FALLS?



Careline
COMMUNITY SERVICE

DO YOU FEEL SAFE & SECURE IN YOUR OWN HOME?

We provide Carelines, keysafes, and minor adaptations to reduce falls, keeping you safe and warm in your home. Ring today for a free home assessment.

Tel: 01553 760671
www.careline-cs.org.uk



OUTWELL AND UPWELL AGE CONCERN LUNCHEON CLUB

We meet once a fortnight at the Upwell Methodist Church, in Town Street. We start at 12.00. The club is for anyone over 60 years of age. We provide a dinner, a dessert and tea or coffee. The price is £5. You will make new friends and meet a lot of new people to talk to. We can provide transport if it is required. We have Raffles and Auctions to help with the cost of running the club.

If anyone is interested please contact:

Pearl Willcox 773566 or
Pauline Sheppard 772395 or
Liz Johnson 772673

YOU WILL BE GIVEN A VERY WARM WELCOME ESPECIALLY FOR NEW ARRIVALS TO OUR BEAUTIFUL VILLAGES.

G & B Superstore

Serving the Local Community
Town Street, Upwell PE14 9DF
Tel: 01945 773507

Opening Hours
Mon-Sun 5.30am- 10.00pm

Newspapers • Wines from the Beers
Alcohol & Beers • Groceries • Food to go
Lottery • Pay Point • Magazines • Cash Point

And local deliveries available now




To Rent Garden Allotments

The Parish Council has a number of garden allotments to rent on its Stonehouse Road site.

Rent is £7.50 per year
Call for more information

TEL: 01945 774272



DOMESTIC HEATING OIL

Quality comes as standard!



-  DOMESTIC HEATING OIL, GAS OIL & DERV
-  QUALITY SERVICE
-  EXCELLENT PRICES
-  PROMPT DELIVERY BY OUR FLEET OF 11 TANKERS
-  ESTABLISHED OVER 40 YEARS

CALL US FREE ON	PETERBOROUGH 0800 083 7861	HUNTINGDON 0800 083 7862	WISBECH 0800 083 7863	OUNDLE 0800 083 7864
------------------------	--------------------------------------	------------------------------------	---------------------------------	--------------------------------

WWW.SS-MOTORS.CO.UK AND ALL SURROUNDING AREAS

Academy Update

Summer Term

Tri -Golf

We had a brilliant result for our two Tri-Golf teams! Both teams took part in the SSP finals at KES. And both teams took second place in West Norfolk—Year 2 team in the KS1 event and Year 3/4 team in the KS2 event. Mrs Thorpe our PE Leader tells us that they all played extremely well and should be very proud of themselves! In her words, 'Once again, well done to both teams. You made me very proud of you all'.

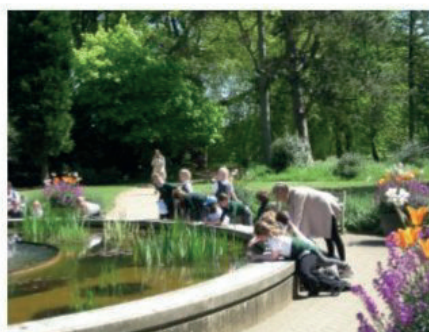
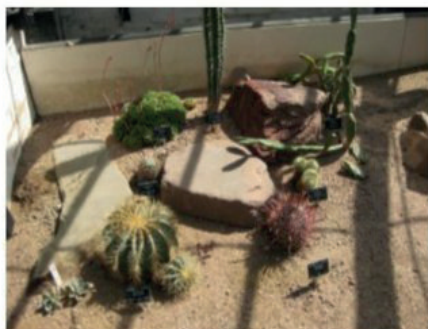


Ahoy there, me hearties!

We held a themed Pirate Day at Upwell Academy on the 18th May. The children had a fun filled day which was enjoyed by all and was packed with Pirate activities and included some wonderful pirate outfits, Pirate Sea Shanties, a Grumpy Pirate and a Pirate Lunch! All our staff were all given pirate names and were lead by our very own Captain Norman.

Trip to Botanic Gardens

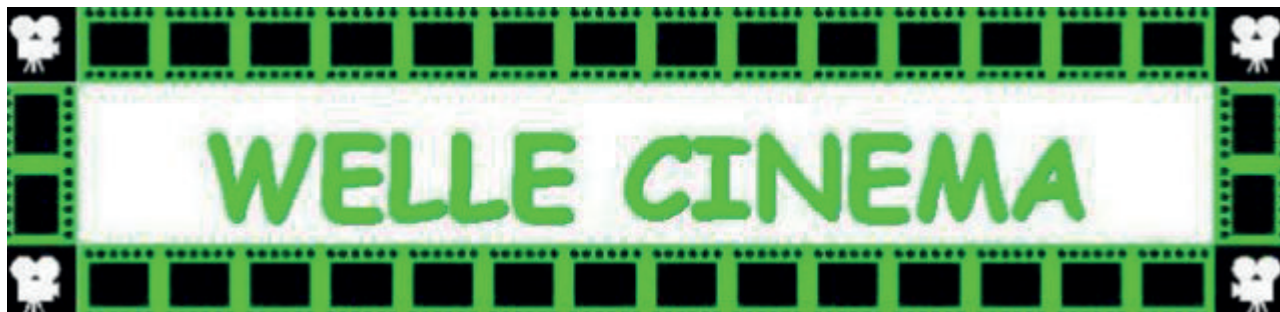
Our Classes Dahl and Ennis-Hill had a wonderful visit to Cambridge Botanic Gardens. They saw amazing plants and learnt how they have adapted to their environments. The cactus house and jungle plants were particular favourites with the children. It was the carnivorous plants that were the most fascinating. Both classes now have their own venus fly-traps called Snapper and Trevor!



Head Boy & Head Girl Election

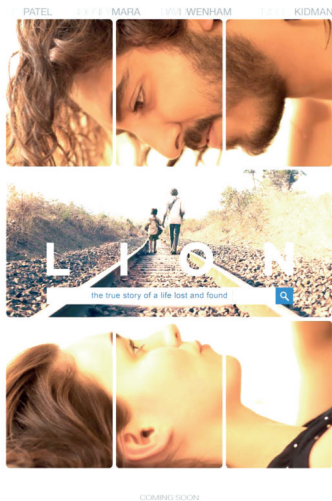
To find our Head Boy and Girl we are holding our own Upwell Academy Election. We are asking for our year 5 pupils to nominate themselves and design their own manifestos. Once we have all our candidates, we will be holding an official election and ballot which all our pupils will be voting in. Each child will have their own voting registration card and when election day arrives their own ballot papers. We will keep you up to date with our exciting election race!

2017
ELECTION



NO NEED TO BOOK

Admission is £3 per person. Doors open 30 minutes before screening commences. Refreshments and licensed bar available. Tel. 01945 773710 or 772824



Sunday 9th JULY 2pm **LION** (PG) doors open 1.30pm

Five year old Saroo gets lost on a train which takes him thousands of miles across India, away from home and family. Saroo must learn to survive alone in Kolkata, before ultimately being adopted by an Australian couple. Twenty-five years later, armed with only a handful of memories, his unwavering determination, and a revolutionary technology known as Google Earth, he sets out to find his lost family and finally return to his first home.

COMING SOON.....

Saturday 22nd JULY, 7pm: **BRIDGET JONES' BABY** (15)

Breaking up with Mark Darcy (Colin Firth) leaves Bridget Jones (Renée Zellweger) over 40 and single again. Feeling that she has everything under control, Jones decides to focus on her career as a top news producer. Suddenly, her love life comes back from the dead when she meets a dashing and handsome American named Jack (Patrick Dempsey). Things couldn't be better, until Bridget discovers that she is pregnant. Now, the befuddled mom-to-be must figure out if the proud papa is Mark or Jack.

Sunday 13th AUGUST, 2pm: **Britain on Film on Tour – RURAL LIFE** (U)

Discover the nation's vanished rural life on film. The British Film Institute has charted the changing countryside and rural life, highlighting activities, pursuits and traditions still surviving today, as well as customs, trades and skills that have since dwindled or disappeared.

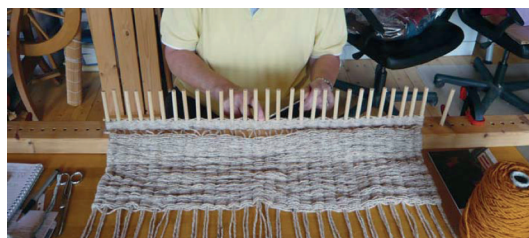
Saturday 19th AUGUST, 7pm: **T2 TRAINSPOTTING** (18)

First there was an opportunity, then there was a betrayal. Twenty years later, Mark Renton (Ewan McGregor) returns to the only place that he can ever call home. There waiting for him are old buddies Spud (Ewen Bremner), Sick Boy (Jonny Lee Miller) and Begbie (Robert Carlyle). Sorrow, loss, joy, vengeance, hatred, love, fear, regret, self-destruction and mortal danger are also

Upwell Spinning and Weaving Group

The Upwell Spinning and Weaving Group are now meeting each week on alternate Friday and Saturday mornings in Upwell, at 10am. Next meeting dates are:

- Friday 23 June
- Saturday 1 July
- Friday 7 July
- Saturday 15 July
- Friday 21 July
- Saturday 29 July



We are an informal group who enjoy not just spinning and weaving, but any fibre based craft, including knitting, crochet and felting. We also have occasional workshops on a range of skills and techniques.

For more information, and where we meet please contact Frances on 07980 742836.



Cambridgeshire Care

A HELPING HAND WHEN YOU NEED IT MOST

Care in the comfort of your own home from one of the larger independent companies established in 1995. We deliver Care all over East Anglia
 Maybe you are recovering from an operation and just need a little help around the house or maybe you require full time care for yourself or a loved one
 give Cambridgeshire Care a call and let us take care of you
 From our initial free, in depth assessment to the structuring and delivering of your bespoke care package - Cambridgeshire Care will help to guide you every step of the way.
 Please telephone for further information or advice

FREEPHONE 0800 7316502



5 Church Street
 Peterborough
 PE1 1XB

The only choice for homecare



Designers and makers of curtains, blinds and all soft furnishings

Diane Wilson

T: 01945 774330 M: 07732968547

West Hoathly, Main Road, Three Holes, Wisbech PE14 9JR

www.perfectchoice-softfurnishing.co.uk

diane@perfectchoice-softfurnishings.co.uk

Bramley House



Cattery

An exclusive twelve chalet holiday home where your pet will receive 5 Star care and attention

Call Angie on 01354 638071 or 07810 563 523
 E-Mail info@bramleyhousecattery.co.uk

GLEN STITTLE

Complete Bathroom Installations



General Plumbing
 Wall & Floor Tiling
 Kitchens Installed

07845 601076 - Day
 01945 773638 - Evening
www.glenstittle.co.uk

Brian Tweed

Family Butcher
 Town Street, Upwell.

Tel: 01945 773248

Fresh beef, pork, lamb and poultry.
 Our specialities are home made sausages and burgers.
 Home cooked ham, roast beef, roast pork and haslets.

Peter J Brown & Son Electrical Contractor

Est 1966

- Commercial and Domestic
- Installations and Maintenance
- Periodic Test and Inspections



Tel: 01945 773377 / 772368
 Mobile: 07860 293837

Navrad's OF UPWELL

GOOD FOOD - GOOD VALUE

Opening Hours

Monday	Closed
Tuesday	4.00pm - 9.00pm
Wednesday	4.00pm - 9.00pm
Thursday	4.00pm - 9.00pm
Friday	11.00am - 1.30pm 4.00pm - 9.00pm
Saturday	11.00am - 1.30pm 4.00pm - 9.00pm
Sunday	Closed

10% Discount Given On All Telephone Orders Over £18

105 School Road, Upwell, Wisbech
 (01945) 772398

UPWELL PARISH COUNCIL

Chairman:
Prue Lester 01945 772234

Deputy Chair:
Richard Melton 01945 771974

Councillors:

Brian Carr 774145
Chris Crofts 773519
Andrew Harrison 773735
Keith Harrison 772661
Frank Humm 773595
Jill Gooch 773301
David Pope 773054
Bill Pugh 773129
Chris Robinson 07836 606098
Jon Schultz 07860 483578
Ros Shorting 773604

Your Borough Councillors Are:
David Pope 01945 773054
Vivienne Spikings 01945 772248

Your County Councillor Is:
Harry Humphrey 01945 430539

Clerk:
Kate Bennett 01945 774272
upwellpc@googlemail.com
3 Sayers Crescent
Wisbech St. Mary
Cambs
PE13 4AS

Facebook Page:

[https://www.facebook.com/
search/upwell+parish/](https://www.facebook.com/search/upwell+parish/)

keywords search

Website

**Check out our
website:**

www.upwellparish.com

Twitter: @upwellparish

UPWELL PARISH COUNCIL Summary of Receipts & Payments year ending 31st March 2017

2015-2016 £		2016-2017 £
	RECEIPTS	
33567	Precept	33970
2733	Council Tax Support Grant	2330
17418	Allotments - Agricultural & Garden	17584
5462	Village Hall	7283
328	Bank interest	322
2570	Adverts/Newsletter	2490
8944	Other (inc. grants)	546
3509	VAT	3137
74531	TOTAL RECEIPTS	67662
	PAYMENTS	
7200	Salary	8584
120	Payroll	180
350	Expenses	217
402	Audit fees	428
417	Stationery	218
3761	Bank/Loans	3786
6622	Allotments	8076
6246	Parks & Playing Field car park & dog waste collection	7314
8110	Village Hall	10655
185	Security	22
35	Training	250
421	British Telecom	279
6657	Street lights	6928
2548	Insurance	2659
20	S137 payments	20
800	Donations	250
2620	Advertising/Newsletter	2778
391	Subscriptions	606
17589	Other (inc. grants)	7118
3137	VAT	2074
67631	TOTAL PAYMENTS	62442
32859	Opening Balance	28690
74531	Plus total receipts	67662
67631	Less Total Payments	62442
39759	Total transferred to Annual Return	33910
	Represented by	
27373	Unity Trust Account 20281171 - Tailored account	31976
1317	Unity Trust Account 20281184 - Tailored deposit	1629
11069	United Trust Business 3 year bond - 20087975	305
0	Unpresented cheques	0
39759		33910



Meeting Dates For 2017

Unless otherwise stated, all meetings will take place at Upwell Village Hall. The Press and Public are cordially invited to attend any meeting. Residents can address the Council at the start of the meeting but may only speak thereafter with the permission of the Chairman.

July 10th
THREE HOLES VILLAGE HALL
Full Council 7:00pm

August 7th
Full Council 7:00pm

September 4th
LAKES END VILLAGE HALL
Full Council 7:00pm

October 2nd
Full Council 7:00pm