

Spring 2013



Upwell Parish Council Community Magazine

Inside this issue :

Chairman's Letter	2
Clerk - Phone Number	2
Insulation Help	3
Heating Help	3
Beaver & Cub News	4
Scout News	5
Bridge Stores	5
Primary School News	6
Upwell Jazz Club	7
Rainwater Cisterns	8
BT Scam - Beware!	8
Upwell Playing Field	9
Street Wize Dance	10
WWI Memories	10
Gold Driver Scheme	12
Walk Upwell News	13
Three Holes Hall	15
Upwell Hall	15
Parish Council	16
Parish Assembly	16

April sees Upwell Gilbert & Sullivan Society celebrate their 43rd anniversary with a rousing performance of 'The Pirates of Penzance', at St Andrew's Methodist Church Hall, Outwell.

'Pirates' is one of the most popular of the 14 Gilbert and Sullivan collaborations, which were written between 1871 and 1896.

It tells the story of Frederic, a young pirate apprentice who is about to be freed from his indenture period. The honourable Frederic, who was mistakenly apprenticed to the pirates by his partially deaf nursemaid Ruth, has decided to leave the pirate life. Now a free man, Frederic leaves for the shore. Frederic, who has never seen a woman besides Ruth, instantly falls in love with Mabel, one of the daughters of Major-General Stanley.

Soon though, the pirates arrive and want to marry the rest of Major-General Stanley's daughters. Major-General Stanley enlists the help of the police to stop the pirates. Frederic desires to help Major-General Stanley and the police protect the ladies, but soon he discovers that, due to a technicality, he is still bound by duty to remain an apprentice to the pirates. All is well in the end when it is discovered that the pirates have noble blood and would in fact be suitable husbands for Major-General Stanley's daughters after all.

Upwell Gilbert and Sullivan Society was originally formed back in 1970 by Audrey Carnson, a local school teacher. In the late 60's she, and husband Stuart, formed a Youth Club based in Upwell Village Hall. Audrey had

always been interested in music and had produced large-scale productions at schools where she had worked. It was no surprise then that she soon had Upwell Youth Club members singing, initially, in the form of a concert party to entertain local groups and organisations, later travelling to outlying districts. She suggested that a complete

operetta might be attempted, and in 1970 our first production 'HMS Pinafore' was aired at Upwell Village Hall. The Society would go on to present their productions at other locations over the years, Upwell Youth Centre (former building behind Upwell Village Hall), and Upwell Secondary School, before returning to Upwell Village Hall, then Wisbech 'Angles Theatre', before finally arriving at its current venue, Outwell Methodist Church Hall.

**Upwell Gilbert and Sullivan Society
Presents**

THE PIRATES OF PENZANCE

Thursday 18th, Friday 19th and
Saturday 20th April 2013

Outwell Methodist Church at 7:30pm Adults- £7
Children- £4

Box Office: 01945 773070

Sadly, Audrey died in 2004 after completing 34 consecutive shows, a huge achievement..... but her legacy lives on.

The society owes its longevity to several factors: the enthusiasm, loyalty, dedication and love of singing of its members, some of whom took part in that first production and believe it or not, will be performing on stage in this latest production!

Stage Direction is by the talented John Hollands. With Musical Direction under the watchful eye and baton of Ted Skelton.

A first class evening's entertainment is guaranteed to all. Book your tickets early to avoid disappointment.





FROM THE CHAIRMAN

Dear All,

Welcome to the spring edition of your Community Magazine. Writing this letter it is still bitterly cold outside and I hope that by the time it reaches you Spring will be here at last.

By now you will have received your **Council Tax Bill** and have seen that the 'Upwell and Special Expenses' section has increased by 3.5%. The Parish Council voted not to

increase the Precept and this increment is due to additional charges by the Borough Council for maintaining the Cemetery, St Peter's Churchyard and for grass cutting through the villages. You will also have read that there have been changes to the way the tax base is calculated and this will mean that for some households maintaining the Precept at last year's level will result in a very small increase to the cost (about £2.00 at most).

It is becoming the norm for Parishes to be asked to fund projects, or at least contribute financially and we need to be in a position to do so when the need arises. One such scheme that we are actively investigating is the replacement of those **streetlights** that the Parish Council pay for with L.E.D. lights. Norfolk County Council have offered to pay 75% of the cost under a 'Parish Partnership Scheme' and I hope that shortly there will be a trial light installed in the village, probably on Church Bridge, so that we can assess the impact. L.E.D. lights are supposed to give better illumination for a much reduced energy consumption and with less maintenance, while reducing light pollution, so in theory this is an opportunity not to be missed. Once the trial light is up, there will be notices in all the usual places to say where it is and your comments will be welcome. Please contact the Clerk or me. Westcotec, who will be supplying this lighting, will give a presentation to the Parish Assembly.

Another project that is about to commence is the construction of a number of **affordable homes** for local people. These are finally to be built in Outwell and the consultation process about who will be eligible for

these homes has been protracted. Both Parish Councils have been trying to make sure that they will indeed be reserved for local people but have not been entirely successful in that there remains an option for them to be let to anyone who has lived within the Borough for 5 years. The best way to make sure the houses go to Parish residents is for anyone interested to apply as soon as possible and get on the list. The Clerk will have more information and application forms. Please don't delay.

There is a **new phone number** for Kate Cobley. Please see below. A phone call, on a trivial matter, to her home number at 10.30 on a Sunday evening was the last straw and the new number will be answered automatically. Please leave a message. Both Clerks can access the number remotely and your call will be responded to within 24 hours.

I have been asked to remind drivers about **parking at night**: parking facing against the traffic flow is not only an offence but dangerous. In the dark the front of a car can be very difficult to see and runs the risk of being hit by an approaching vehicle. Please park facing in the same direction as the traffic flow so that the red reflectors and yellow reflective number plate at the back of your car can easily be seen and a collision avoided. A final consideration is that if the worst did come to the worst, then at least it wouldn't be your fault!

Looking back to the previous magazine, one of the **grit bins** I mentioned that was installed on the Common, at the request of those who live along there, vanished even before N.C.C. Highways had time to fill it! If anyone happens to know where it has gone please let the Police know by phoning 101.

This magazine is packed with articles about **local clubs and societies**. It is a particular pleasure to read about the activities available to children and young people. Anyone who grumbles that 'there's nothing to do out here' should read on!

Lastly I would like to thank our advertisers for their invaluable support, those who have contributed to this magazine and once again, Steve Calton, for editing it.

With kind regards,

Prue Lester

NEW PHONE NUMBER FOR THE CLERK

01945 774272

**PLEASE LEAVE YOUR MESSAGE AND YOUR CALL WILL BE
RESPONDED TO WITHIN 24 HOURS**

INSULATION HELP FOR HOMEOWNERS

Rising fuel bills and colder weather mean it is more important than ever to get the most from the fuel you use to heat your home.

Insulating your hot water tank and heating pipes and fitting draught excluders can help to stop heat escaping and may help to reduce your heating bills.

Warm and Well in Norfolk provides and fits low level insulation, such as hot water tank jackets and pipe lagging, and draught excluders free of charge if you own and live in your home and are in receipt of one of the following benefits:

Pension Credit, Income Support or Income-based Jobseeker's Allowance, Employment Support Allowance (must include support component or work-related activity element), Child Tax Credit (income £15,860 or less), Working Tax Credit (income of £15,860 or less) or Council Tax Benefit (excludes single person discount).

To find out more please call 0344 800 8020.

LIMITED FUNDING AVAILABLE SO EARLY APPLICATION IS ADVISED.

This scheme is provided by



Warm and Well
in Norfolk

Borough Council of King's Lynn & West Norfolk



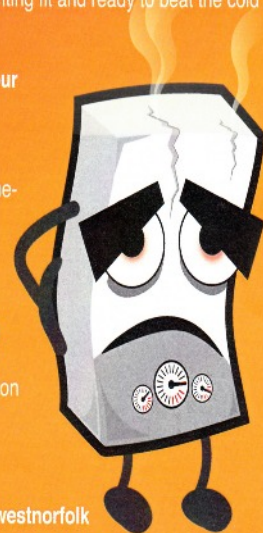
HEATING HELP FOR HOMEOWNERS

Heating your home could help you to stay healthier so it's important that your heating system is working at its best. An inefficient boiler could mean that you struggle to heat your home properly and can add to the cost of your fuel bills.

Warmer West Norfolk grants are available to replace or upgrade heating systems free of charge so that they're fighting fit and ready to beat the cold this winter.

To qualify you must own and live in your home and currently claim one of the following:

Pension Credit, Income Support or Income-based Jobseeker's Allowance, Employment and Support Allowance (must include support component or work-related activity element), Child Tax Credit (income £15,860 or less), Working Tax Credit (income of £15,860 or less) or Council Tax Benefit (excludes single person discount). To find out more



Call 01553 616461


Visit www.west-norfolk.gov.uk/warmerwestnorfolk

LIMITED FUNDING AVAILABLE SO EARLY APPLICATION IS ADVISED.

This scheme is delivered by the

Borough Council of King's Lynn & West Norfolk





GOOD FOOD - GOOD VALUE

Tuesday 4.00pm - 9.00pm

Wednesday 4.00pm - 9.00pm

Thursday 4.00pm - 9.00pm

Friday 11.00am - 1.30pm
4.00pm - 9.00pm

Saturday 11.00am - 1.30pm
4.00pm - 9.00pm

10% Discount given on ALL telephone orders over £12.00

105 School Road, Upwell, Wisbech
(01945) 772398

JUST WINDOWS
(01945) 474373

uPVC DOUBLE GLAZED WINDOWS

QUALITY AND VALUE

THE BARN
Collets Bridge, Elm

Telephone 01945 474373

Beaver News

We meet at Upwell Methodist Church on Wednesdays from 6.30pm - 8pm. At present we have 18 beavers all of who attend regularly.

We held a fun day in January which turned out to be a very enjoyable chocolatey time for all!!!

Since the Christmas break we have been working towards the Emergency Aid 1, ICT 1, Animal Care, Hobbies, and the Fitness challenge badges which all beavers should gain by the Easter holidays. We have also worked alongside the cubs



and scouts to put on a pantomime.

We welcome new children between the ages of 6 - 8 years but do operate a waiting list when necessary.

**For further information ring Deborah on
07513 993526.**

Cubs

In the run up to Christmas the Cubs spent two weeks preparing for the annual Christmas Fayre. This year was very special as we had all three sections there, (Beavers, Cubs and Scouts), for the first time. As part of their International badge the Scouts ran a French style cafe complete with French onion soup, while the Cubs and Beavers helped to run a selection of craft, homemade cakes, glitter globes and game stalls. For the first time this year we had a chocolate stall, which proved a huge hit. We had an amazing night and raised £420 for group funds - double the amount we have ever made before.

The following week we held a fancy dress Christmas Party complete with disco (thanks to Sally and Andy) with everyone enjoying the night at the last pack meeting of 2012.

January 9th was the first meeting of the New Year. The Cubs made dragster racing cars powered by mouse traps! These were quite fiddly to make so we had varied degrees of success, but most groups had theirs going by the end of the night.

The following week we all went to the Methodist Church with Rev David Ely as part of the My Faith activity badge. Rev Ely spoke to the Pack about the Church, his faith and beliefs and how Methodists differ from other religions. The Cubs enjoyed the time in the Church and went on to write a simple prayer on the back of a Noah's Ark they had drawn and coloured in.

On January 23rd. we held a Hobbies evening. Each of the Cubs brought in a Hobby and talked about it to the others. Hobbies ranged from a Uni-cycle to fossils and from pin art to pocket games consoles. Whatever hobbies are out there you can bet one of the Cubs is doing it!

By the time you read this our pantomime 'Jack and Jill in Wonderland' will have taken place. It's been 2 years since our last production and at the time of writing all 3 sections have been busy rehearsing for the big night.

If your child is interested in finding out more about the Scouting Movement, you can contact us on 12thwisbechscouts@gmail.com

AKELA

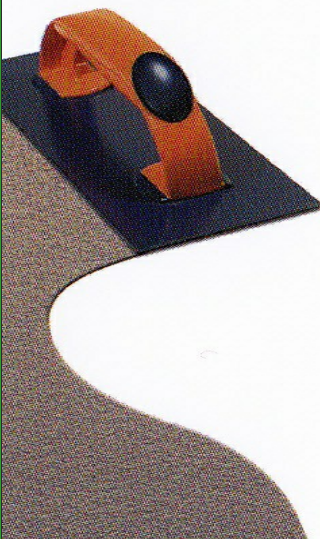


M BROWN PLASTERING

Quality Plastering

Tel: 01945 778 031
Mobile: 07775 783 172
07957 542 538

Email: mickleeds23@yahoo.com



Scouts News

The "new" Section of the 12th Wisbech Scout Group had a busy run up to the Christmas Fayre, at which they provided refreshments 'a la francaise' in their French Restaurant: Serving café au lait, tea, pastries and homemade onion soup. A lot of fun was had by all as well as raising much needed funds for the Group. Since then a leadership change has taken place. We would like to take this opportunity to say a big Thank You to Ian Winskill, for all the hard work and support he has given to the Group.

Since January Scouts have been busy working on various projects. They have taken part in team building activities and troop forums, where Scouts make joint decisions about what they would like to achieve in the next term. They have devised their own Code of Conduct and Action Plan, which means that they have nearly completed their Promise

Challenge. At the moment they are working hard to learn lines for the coming Group Pantomime, "Jack and Jill in Wonderland", written and directed by our very own Beryl Boyce. It is fair to say that everyone will have earned their Entertainer Badges!

After the Pantomime Scouts will work on their Model Maker Badges; this will involve building model cars from AirFix or Revell type kits, and then using solar power to make them ready for racing. We look forward to an exciting "Bring a Friend" evening on 13th March when the Cambridgeshire Search and Rescue Team will visit us. A short talk will be followed by lots of activities with a search and rescue basis for the Scouts to take part in. They are each invited to bring along a friend, so others can enjoy this great opportunity to find out what modern Scouting is all about.

Whilst refreshing and building on our first aid and map reading skills we will be getting closer to Easter: The last meeting before Easter will be special when, weather permitting, we will enjoy a hike with a treasure hunt and outside cooking to finish off our Guide badges.

After Easter we will concentrate on Survival Skills and outside activities.



A further "Bring a Friend" event will be our Survival Day Preparation afternoon on the 17th April, when we shall explore elements of bushcraft and survival. We will put these into practice on the 20th during our Survival Day at the Wolferton Scout Site on the Sandringham Estate. Shelter, Fire, Water and Food are the main themes during those 2 days. Building a shelter from materials available in the wild and lighting a fire to cook without pots and pans are just 2 of the things we will be doing.

The next event on our planner is our annual "Summer Camp" which is a joint 4 Nights Camping event with the 12th Wisbech Cubs. We are all very excited and looking forward to getting stuck into lots of new experiences with activities such as Crate Stacking, Climbing, Canoeing, Hiking, an Australian themed Day, a Camp Fire and lots of fun.

So all in all, Scouts keenly anticipate a busy few months and can't wait to continue the way they started - with lots of action and excitement.

We would like to invite anyone to visit us and join in the fun.

Scout Leader Anja

Assistant Scout Leaders Ash and Jess

**For information you can contact us on:
12thwisbechscoutgroup@gmail.com**



Bridge Stores – Our Shop at Three Holes

This very handy shop is run by Helena Knights and her family who have been there for almost sixteen years. It is a small convenience store selling pretty much everything we need in order to survive including groceries, papers, chocolates, alcohol, cigarettes and a good deal more. It is also a 'pay zone' outlet from where you can settle a variety of bills; health lottery tickets are on sale there too.



Earlier last year Helena turned part of the shop into a small area for serving teas, coffees and hot snacks – pies, pasties, bacon rolls and sausage sandwiches, sourcing all the meat used from a local butcher. This was begun on a trial basis, but has been so successful that they will soon be expanding the service to include hot soup and jacket potatoes. Helena is particularly keen to thank her customers, old and new, for their support; and I think these days we all appreciate having a store like this in a village. Long may it continue.

Sylvie Short

Upwell Community Primary School News

**What do hot air balloons, golden bears & pizza making have in common?
Answer: they all play a part in promoting excellent attendance at Upwell Community Primary school.**

Like all schools, Upwell community primary wants to see all its pupils at school every day to get the very best from their education. To this end a range of rewards are offered to whole classes & to individual children with excellent attendance.



Class attendance is there for all to see on this

colourful display. Each class has its own hot air balloon. The class with the best attendance for the week can watch their balloon soar high above the school & the other class balloons.



The class with the best attendance for the week is presented with the golden bear which is proudly displayed in class all the following week & the class register is carried around school in its own special golden box .



As a reward for the best class attendance over the last half term, Beacon class were excused lessons & spent a morning making their own pizzas--& then eating them.



A new reward has recently been added for individual children.

Each child who has 100% attendance for a week is given a raffle ticket. At the end of each half term period a raffle prize will be awarded to one child in key stage 1 & key stage 2.

The owners of the winning tickets will receive a £10 gift voucher to spend as they wish. This prize has been funded by FOSA (friends of school association).

Upwell Jazz Club

was started in April 2001 and was originally based in Upwell Village Hall.

At the time there were virtually no local venues offering jazz, for either punters or players and it was decided to start the Club to give both a venue and stage to aspiring local players of all abilities.

Over the years the Club has settled into a format of a regular back line with guest artistes on the front. The guests are mainly local (with some now coming in from places such as Saffron Walden, Diss and King's Lynn) and the style of jazz played is mainstream with some contemporary thrown in now and again for good measure, along with popular standards but perhaps played in a style or rhythm not originally intended. The band size varies from a trio to a sextet with a mix of both instrumentalists and vocalists.

The Club now meets at newly refurbished Three Holes Village Hall (on the A1101 between Welney and Wisbech) on the last Sunday of the month (except for August and December).

Admission is £5.00 per person (under 16's free) and there is a bar and fresh rolls made up on the day along with a selection of savouries.

**Up-to-date information can be found on our website: www.upwelljazzclub.co.uk
For further information please contact Nigel Smith on 1945 773121 or 07980 742835.**

Upwell Jazz Club 2013

Three Holes Village Hall (Sat Nav PE14 9JY)

Sunday 27th January
Heinz Hunt – Saxophone/flute
Derek Clenshaw – Trombone

Sunday 24th February
Pete Neighbour – Clarinet

Sunday 24th March
Myke Clifford – Saxophone/flute/vocals

Sunday 28th April
Heinz Hunt – Saxophone/flute
Helen Emery – Vocals

Sunday 26th May
Tom Melvin – Vocals
George King – Saxophone

Sunday 30th June
The Alan Norris Big Band

Sunday 28th July
Parisian Swing – Gypsy Jazz

Sunday 29th September
Colin Radford – Clarinet
Paul Hicks – Vocals

Sunday 27th October
Laurie Jacobs – Saxophone
John Pinney – Guitar

Sunday 1st December
Heinz Hunt – Saxophone
Derek Clenshaw – Trombone
Tom Melvin/Sue Ashdown – Vocals

Time: 12.30pm - 2.45pm - Admission £5.00 - Bar, fresh rolls, crisps and savouries available.

For more details contact Nigel Smith on 01945 773121 / ratamacue@btinternet.com

As advertised on "The Late Paul Barnes" BBC Radio Norfolk/Cambridgeshire - Sat 11.00pm/Sun 1.00am



**Manufacturers and
Installers of Quality
PVCu Windows,
Doors, Conservatories...
and more!**



SHOWROOM OPEN
7 DAYS A WEEK!



You can't buy better!!



**ALUMINIUM
WINDOWS &
BI-FOLD DOORS**

**20% OFF
PVCu FASCIA,
SOFFIT & GUTTERS**

- SHOWPARK AND SHOWROOM
- GREAT DEALS ON ALL PRODUCTS
- THE COMPLETE LOCAL PACKAGE

EXAMPLE **4 WINDOWS**
(C Rated)

INC. 5 OPENERS PLUS
A SOLID PVCu DOOR
from **£1850** INC fitting & VAT

TRUSTED, LOCAL & RELIABLE

We offer everything you'd expect from an established local home improvement company, only we do it better!

Discover the difference with a Super Seal conservatory!

We're the ONLY local manufacturer offering a fully suited, turnbuckle locking Shield roofing system - meaning your conservatory is more secure, more watertight and better by far!

BUY NOW and save £££'S!

Outstanding quality and truly excellent value - call now or visit our Showpark to discover more!

Amazing Deals on New Build and Self Build - call for details!

WISBECH
**01945
466400**



FREE | FREE | FREE | FREE
ADVICE | SURVEY | QUOTE | PHONE

0800 731 8322

www.super-seal.co.uk
222 Lynn Road, Wisbech PE13 3EE



KINGS LYNN
**01553
772277**

Rain-water Cisterns



This photo is of the water cistern that is under my patio, which would have been installed when the house was built, as there was no mains water in the village then. The size of the tank is 15' long x 3 ½' wide. As the tank is 8' deep even the arch allows me to stand up straight and I am 6' tall. You can clearly see the pipe that would have been connected to a standpipe on the surface. It is estimated that the tank could hold at least 6000 litres of water, which is the equivalent of 600 toilet flushes.

Prior to undertaking the reuse of the cistern I sent a water sample and a swab to Suffolk County Council

who charged me £76 to have the samples analysed. Although this may seem expensive they were by far the best price and very efficient. Sadly the results were a little worrying.

With the house being nearly 200 years old, it is safe to assume that the water cistern and the sewerage pipes may be the same. We believe that the age of the pipes means that deterioration may have caused slow leakage into the ground over the years and seeped into the tank which is only 8' away. Over the years this has meant that the ammonia levels have built up to a high enough level not to be safe to use or risk contaminating other sources of water.

Updating the waste pipes to their modern equivalents would possibly allow the contamination to wash out of the ground, but even with the amount of rain that we seem to have, this would take a couple of years to achieve but at least it is possible.

Maybe another article in the future could show the system in use and a huge drop in my water bill!!

David Williams

With many thanks to David for his very interesting letter. Has anyone else put their cistern back in to use? If so please let me know about your experience.

Prue Lester

BT Scam

This article was circulated by Frank Humm, who is the local Consumer Champion. Contact him on 01945 773595 or frankhumm@btinternet.com if you have concerns about a possible scam or mis-selling.

The following was sent to me by a Consumer Champion who received it as an email - and I am posting it for you ALL TO BE AWARE

Received a phone call from BT, informing me that he was disconnecting me because of an unpaid bill. He demanded payment immediately of £31.00 or it would be £118.00 to re-connect at a later date. The guy wasn't even fazed when I told him I was with Virgin Media, allegedly VM have to pay BT a percentage for line rental! I asked the guy's name - he gave me the very 'English' John Peacock with a very 'African' accent - & phone number -0800 0800 152. Obviously the fellow realized I didn't believe his story, so offered to demonstrate that he was from BT. I asked how & he told me to hang up & try phoning someone - he would disconnect my phone to prevent this. AND HE DID !! My phone was dead - no engaged tone, nothing - until he phoned me again. Very pleased with himself, he asked if that was enough proof that he was with BT. I asked how the payment was to be made & he said credit card, there & then. I said that I didn't know how he'd done it, but I had absolutely no intention of paying him, I didn't believe his name or that he worked for BT. He hung up. I dialled 1471 -number

withheld. I phoned his fictitious 0800 number - not recognized. So I phoned the police to let them know. I wasn't the first! It's only just started apparently, but it is escalating. Their advice was to let as many people as possible know of this scam. The fact that the phone does go off would probably convince some people it's real, so please make as many friends & family aware of this as possible. How is it done? This is good but not that clever. He gave the wrong number - it should have been 0800 800 152 which takes you through to BT Business. The cutting off of the line is very simple, he stays on the line with the mute button on and you can't dial out - but he can hear you trying. (This is because the person who initiates a call is the one to terminate it). When you stop trying he cuts off and immediately calls back. You could almost be convinced! The sad thing is that as it is so simple it will certainly fool many. By the way this is not about getting the cash as this would not get past merchant services - it is all about getting the credit card details which include the security number, to be used for larger purchases.

For your information OFCOM have published information relating to this type of scam on their website, which also gives advice on what to do if you suspect a call is fraudulent.

<http://consumers.ofcom.org.uk/2009/09/scam-alert-beware-of-bogus-callers/>

Upwell Playing Field Committee

Registered charity 300425

Oh what a lovely half-term week it has been so far (Tuesday) – the sun has shone; Mums and children have been in the play area, and some have used the skate ramps. Daffodils are peeping through the ground and spring is round the corner at last!

We will soon be advertising our weekly carboot sales which, weather permitting, start on 4th April. Sellers are welcome from 8am. (but not before 7.30am). Pitches cost £5.00. The maximum permitted vehicle size is transit van or similar. The sale of live or dead animal products is not allowed and pitch holders are requested to clear all of their own rubbish. Buyers are welcome from 9.00 am. The usual refreshments – tea, coffee, bacon rolls etc. – are available for all. The playing field will remain in use for football matches throughout April.

We welcome Outwell Swifts youngsters – Under 7s, 8s, 10s and 12s – led by Richard Melton and his team. (see photographs below). Matches are played on Saturdays and Sundays. Training is on Tuesday and Thursday evenings at the field 6pm – 7pm. (with lighting). It is possible that an adult team may use the main pitch from September; this is to be confirmed.

Pavilion news – The kitchen, toilets and function room are now open for use, but there is still some decorating to be completed. Flooring will be laid in the week commencing 4th March. Blinds are needed but unfortunately the piggy bank is virtually empty and work has come to a standstill. We are applying for funding for the changing facilities as you may have read in 'Welle-in-Touch.' Other funding applications will follow. Some crockery has been donated by village residents Mr and Mrs McKee; coffee mugs from the former Upwell Cricket

Club; a fire extinguisher from Gordon Moat. Upwell Playing Field Committee say "thank you for your support".

A programme of events is planned for the summer. Please do come along and support **YOUR** local playing field. The committee is working very hard to see the completion of the changing facilities which will be their legacy to the village.....and it could be yours too – every little helps!

Work to renovate the skate ramps will very soon be underway and has been funded from money raised by some of the boys and girls who use the ramps. Other fund raising events are in the pipeline for further renovations.

Our events list to date for the year 2013:

April 16th AGM.
 April 20th Horse and Pony Show with gymkhana.
 May 11th Dog Show
 June 15th Joint event with Upwell Hall – Buffet dance.*
 June 22nd Horse and Pony Show, Gymkhana and Clear round jumping.
 July 21st HOSTING – Greyhound Rescue Dog Show
 July 28th Summer Fayre, various attractions - for everyone, including childrens' races.*
 August 24th Horse and Pony Show, Gymkhana and Clear round jumping.
 October 5th Horse and Pony Show, Gymkhana
 October 26th Halloween Family Disco*
 November 22nd Table Top Tack sale in Upwell Hall
 December 13th Christmas Raffle*

*Raffle prizes will be required suitable for the time of year and occasion please.

Ros Shorting, UPF Secretary.



101 is now the number to call your local police.

In an emergency, always call 999

When should I call 101?

To report less urgent crime or disorder and for general police enquiries. For example;

- if your car has been stolen;
- if your property has been damaged;
- when you suspect drug use or dealing; or
- to give the police information about crime in your area.

Calls from landlines and mobile networks cost 15 pence per call.

If you are deaf or hard of hearing you can textphone 18001 101

Crown Copyright June 2011

www.police.uk/101

Unwanted furniture & electricals?

We'll collect them for **FREE** to help save lives

Call 0844 248 9157*
 or book online at
bhf.org.uk/collection

- Suites
- Lounge furniture
- Tables
- Beds
- Bedroom furniture
- TVs, DVD's & Hi-Fi's
- Washing machines
- Fridges
- Dishwashers
- Small electrical items

British Heart Foundation
 Furniture & Electrical Store
 6-7 High Street, Kings Lynn,
 PE30 1BX

We also offer a house clearance service (charges may apply).

BEATING HEART DISEASE TOGETHER

Please don't be disappointed if we are unable to accept items for reasons of safety or quality. Free collection on small items is at the discretion of the Store Manager. Our van drivers will make the final decision on any donations collected.
 *Call 0844 248 9157 for more information. Charities have no liability for any mobile phone use. Top speed capped at 110mph and max fuel usage 100%.



Street Wize Dance Group



Kate Smith runs Street Wize dance group every Monday evening in term time at Upwell Methodist Church.

The group has been running for over a year now and students have had the chance to perform at the Kings Lynn Corn Exchange and at the Arts Centre.

Kate trained as a dancer at the Leicester College of Performing Arts, gaining a distinction on a Diploma course awarded by Trinity College London and graduating in 2010. She has worked as a professional dancer all around the U.K. touring with the theatre show 'One Night in Vegas' and appearing in various other events and TV adverts.

Along side this she has been teaching for the last 6 years in a wide range of dance styles from ballet to street dance. After opening classes in Gaywood and Walpole she is thrilled to have a class in her home village of Upwell!

At Street Wize students learn new street dance routines every week. Kate says: 'In the last year I have seen so many students progress as dancers but best of all gain in confidence.'

Classes begin at 6.45 for under 11s and 7.45 for over 11s. All classes are an hour long and cost £3.00 per session. Kate is first aid trained, fully CRB checked and insured.

Street Wize are always on the look out for events to showcase our skills. Please contact us if you are planning an event and would like us to perform.



Visit us on facebook at

www.facebook.com/streetwizedance

Call Kate on 07845 823044

Or email on katelsmith1@hotmail.co.uk

Do you want: Help with your computer?

- would you like someone to:
- Fix your computer or recover lost speed?
- Set up a new computer for you, dispose of the old PC, after security wiping data?
- Sort out Internet connection and problems?
- Provide a course of lessons on using your computer for a range of activities?

Call outs to your home for problem solving - £45/hr
 Lessons on your own PC - four 1 hour lessons - £99
 Work on your PC at our workshop - only £30/hr*
*(collection and delivery - £45)

Call 01354 638683

info@pclifesupport.co.uk
www.pclifesupport.co.uk

more than 25 years
 supporting
 computer users



WORLD WAR 1 EXHIBITION OF MEMORABILIA

Next year is the centenary of WWI. The Wisbech & Fenland Museum has asked William Smith, author of 'Discovering Upwell' to find local material to be included in an exhibition in the museum. His area is the villages that used to make up the Town Of Welle. He is looking for interesting stories, pictures and artefacts.

If you think you could contribute, please contact him directly, either by email steamatic@steamatic.org.uk or phone 01945 772712

Otherwise please talk directly to the museum. The Contact there is Robert Bell.

Museum Square, Wisbech, Cambridgeshire PE13 1ES
 01945 583817 www.wisbechmuseum.org.uk/

HARNWELL ELECTRICAL LTD

Electrical Engineers & Contractors
Industrial, Domestic, Agricultural & Commercial Installations.



**THE GRANARY, ST PETERS ROAD, UPWELL,
WISBECH, CAMBS PE14 9EH**
Telephone: (01945) 773207

AGRIMECH SERVICES

Electrical and Mechanical Engineers

Service and repair of all makes of palletisers,
weighers, stitcher and conveyor systems
Design and build of control panels
Repairs and replacement of PLC controllers

www.agrimech.co.uk

Passion and dedication to agricultural automation

01354 638222 info@agrimech.co.uk

G & B Superstore

Serving the Local Community
Town Street, Upwell PE14 9DF
Tel: 01945 773507

Opening Hours

Mon-Sun 5.30am- 10.00pm

Newspapers • Wines from the Beers
Alcohol & Beers • Groceries • Food to go
Lottery • Pay Point • Magazines • Cash Point

And local deliveries available now

Just To Be...

Holistic therapies
Relaxing, Reviving,
Rejuvenating
Swedish Massage
Reflexology

Gift Vouchers Available
Flexible Appointments
Contact Jennie VTCT
Tel. 01945771954
Mob. 07719742839
Email justtobe@live.co.uk
www.justtobe.biz

FENLAND GARAGE DOORS

The area's most comprehensive range of manual and Automatic doors.
Plus repairs to all doors, and spares

**PROUD TO SAY MORE THAN HALF
OUR NEW CUSTOMERS COME TO US
BY RECOMMENDATION**

Wisbech 01945 640 004
March 01354 780 004

Please visit our new Bexwell Showroom
01366 382 815

www.fenlandgaragedoors.co.uk



8 York Row, Wisbech PE13 1EF
www.mcp-law.co.uk
01945 464331

Services provided:

**Family, Property, Crime, Commercial, Employment,
Personal Injury, Wills & Probate, Dispute Resolution**

Town centre location Fixed fees available
Home visits available on request



METCALFE COPEMAN & PETTEFAR SOLICITORS

Crown Service Station (Outwell) Ltd

MOT's Servicing Repairs

Stuart, Kevin and Michael will be pleased to help you with any of your motoring problems. Give us a call or pop round.

We are now situated on Isle Road, Outwell, PE14 8TD

Class 4 & 7 MOT's now undertaken

01945 773553

garage@thecrownlodgehotel.co.uk

A.R. CLINGO FUNERAL DIRECTORS

- † Family Independent Business
- † Private Chapel of Rest
- † Personal Attention
- † 24 Hour Service

Full estimates given at all times

Golden Charter
Funeral Plans

Pinfold House
St. Peter's Road
Upwell, Wisbech
Phone: 01945 772502



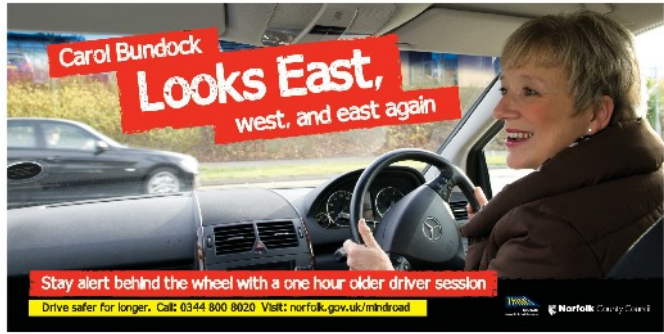
GOLD SCHEME FOR OLDER DRIVERS

Drive safer for longer

As drivers get older, some may become less confident on the road or have specific concerns about aspects of their driving, health or mobility. Norfolk County Council's Guidance for Older Drivers programme (GOLD) aims to keep older people driving safer for longer.

GOLD offers a one hour driver development session which is intended to help and advise. The session, which can be taken in the driver's own car, is designed to refresh skills and increase confidence. It is delivered by Driving Instructors who have been given specialist training.

Local TV presenter, Carol Bundock, is supporting the campaign and took a driver development session to check her driving skills were still as good as the day she passed her test.



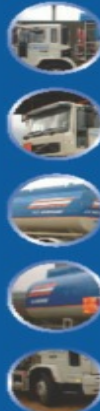
Carol enjoyed the experience and said: "The feedback I received was extremely informative and has helped me feel much more confident behind the wheel. I can't recommend it enough."

GOLD is open to anyone over 55 or anyone who has concerns about an elderly family member. For more information about GOLD, visit www.norfolk.gov.uk/mindroad or telephone 0344 800 8020.



DOMESTIC HEATING OIL

Quality comes as standard!



DOMESTIC HEATING OIL, GAS OIL & DERV

QUALITY SERVICE

EXCELLENT PRICES

PROMPT DELIVERY BY OUR FLEET OF 11 TANKERS

ESTABLISHED OVER 40 YEARS

CALL US FREE ON

PETERBOROUGH 0800 083 7861

HUNTINGDON 0800 083 7862

WISBECH 0800 083 7863

OUNDLE 0800 083 7864

WWW.SS-MOTORS.CO.UK

AND ALL SURROUNDING AREAS



Your friendly hairstylists and barbers!

Welcome to our ladies' salon and barber's shop. We're open for drop-in (as available) and by-appointment cuts and styles on:

Tue 9-5

Wed 9-12-ish

Thu 9-5 (later slots by prior appointment)

Fri 9-5

Sat 9-2-ish

Characteristics Hair Salons

Church Bridge, 59 Town Street

Upwell PE14 9DF

Tel. 01945 773468

W. Feary Painter & Decorator

Good Work At Reasonable Rates

No Job Too Small

Tel: 01945 583381
34 Clarence Road - Wisbech



WALK UPWELL NEWS

This programme of walks has been put together by the new committee who are now running the club and would be delighted to welcome new members. If you are interested please email the secretary, David Porter, at djporter49@btinternet.com

The new Chairman is David Nash who can be contacted by email at david.g.nash@talktalk.net or phone on 01945 773181.

Allan Gullon is now Treasurer: allanalex@live.co.uk or 01945 772354.

Local walks will generally use paths around the villages of Upwell and Outwell but can be adjusted on the day to meet the needs of the walkers present or the weather conditions.

Mid week walks are intended to be longer. For the longer walks water and other refreshment is advisable. Also, given we will be walking for a while, a picnic is recommended as a break will be essential.

PROGRAMME OF WALKS – March to July 2013

Date	Location	Approximate Length	Leader and Meeting point	Distance and Sat Nav Ref:	Grid Ref:
11 th March	Shouldham Warren	4.5 miles	David Nash 10.00am at VH	PE33 0DG 17miles c.30mins	TF679104
24 th March	Local Family Walk	2.5 – 3.5 miles	tba 12.30 at VH	Upwell Village Hall	
9 th April	Wimbotsham and Downham Market	7.5 miles	David Porter 10.00am at VH	Car park by the middle level – Stow Bridge	TF602062
28 th April	Local Family Walk	2.5 – 3.5 miles	tba 12.30 at VH	Upwell Village Hall	
1 st May	Evening Local Walk	c. 2.5miles	Prue Lester 6:30 pm at VH	Upwell Village Hall	
4 th May	Bawsey & Roydon Common	7.5 miles	David Nash 10.00 an at VH	PE32 1EU 21m 35mins	TF675198
22 nd May	Castle Acre	6 Miles	Allan Gullon 10.00am at VH	PE32 2AG 27m c. 45mins	TF817151
2 nd June	Local Family Walk	2.5 – 3.5 miles	tba 12.30 at VH	Upwell Village Hall	
3 rd June	Evening Local Walk	c. 2.5miles	Prue Lester 6:30 pm at VH	Upwell Village Hall	
17 th June	Sandringham	6.5 miles / 3.5miles Way marked but unguided	Allan Gullon 10.00am at VH	(near) PE35 6EH 26m c. 45min	TF695285
1 st July	Evening Local Walk	c. 2.5miles	Prue Lester 6:30 pm at VH	Upwell Village Hall	
7 th July	Local Family Walk	2.5 – 3.5 miles	tba 12.30 at VH	Upwell Village Hall	

COMPUTERS & LAPTOPS

TROUBLESHOOTERS

FOR ALL OF YOUR COMPUTING REQUIREMENTS
NEW & USED PC'S, LAPTOPS AND TABLETS
REPAIRS, SERVICE, MAINTENANCE,
BROADBAND, INTERNET, NETWORKING
RELIABLE, FAST, EFFICIENT SERVICE

NO CALL OUT CHARGE — NO FIX NO FEE

YOUR LOCAL

CERTIFIED ENGINEER — OVER 20 YEARS EXPERIENCE WITH

9 YEARS IN THE WISBECH AREA



Tel: 01945 780655 Mob: 07817592853



Cambridgeshire Care

A HELPING HAND WHEN YOU NEED IT MOST

Care in the comfort of your own home from one of the larger independent companies established in 1995. We deliver Care all over East Anglia

Maybe you are recovering from an operation and just need a little help around the house or maybe you require full time care for yourself or a loved one give Cambridgeshire Care a call and let us take care of you

From our initial free, in depth assessment to the structuring and delivering of your bespoke care package - Cambridgeshire Care will help to guide you every step of the way.

Please telephone for further information or advice

FREEPHONE 0800 7316502

5 Church Street
Peterborough
PE1 1XB



The only choice for homecare

Hayley Carter MCFHP MAFHP

Foot Health Practitioner



Complete service for all foot care needs in the privacy and comfort of your own home - Flexible hours including weekends and evenings - Registered member of the British Association of Foot Health Professionals

Tel: 01945 870860 or 07795 598068

Email: info@hayleycarter.com

Web: www.hayleycarter.com

Blended Monkey Crafts

Gifts



Unique

Hand-made

Affordable

One-off products made from wood, clay & silk
Hand-crafted & bespoke from our studios in Upwell

www.blendedmonkey.co.uk

GLEN STITTLE

Complete Bathroom Installations



General Plumbing
Wall & Floor Tiling
Kitchens Installed

07845 601076 - Day
01945 773638 - Evening
www.glenstittle.co.uk

Brian Tweed

Family Butcher
Town Street, Upwell.

Tel: 01945 773248

Fresh beef, pork, lamb and poultry.
Our specialities are home made sausages and burgers.
Home cooked ham, roast beef, roast pork and haslets.

Peter J Brown & Son Electrical Contractor

Est 1966

- Commercial and Domestic
- Installations and Maintenance
- Periodic Test and Inspections



Tel: 01945 773377 / 772368
Mobile: 07860 293837

Beauty Treatments by Jane

JESSICA*
Manicures & Pedicures



dermalogica® skin care system

N.V.Q. - o.p.i. - Babcac
Rose Cottage, Christchurch,
Telephone: 01354 638378

THREE HOLES VILLAGE HALL

The Hall looks beautiful when set up for **weddings and parties**. Hire costs are very competitive at £90 per day or a minimum hire fee of £30 (up to three hours Mon-Fri) and rates are negotiable for regular bookings. For more information call Eddie or Carol 01945 773961

There is now **broadband** up-and-running at the Hall and if you have your own BT WiFi/Openzone account you will be able to access this already. For more information see <http://www.btwifi.co.uk/find/directories.jsp>. For Hall users who are not existing BT WiFi/Openzone customers, vouchers for 90 minutes (£5) and 24 hours (£10) are now available for purchase - more information available from Sue 01945 772824.

The **Three Holes Village Hall and Playing Field Annual General Meeting** will take place at 7.00pm on Monday 29th April at the Hall. Everyone in the local community is welcome to attend. If you would like to stand as a committee member or find out more about what would be involved please contact Rita 01945 772226 or Sally 01945 773418.

Three Holes **Indoor Bowls Club** invite you to have a go at bowls at a taster session at the Hall on Thursday 14th March from 7.00pm until 9.00pm. Norfolk has already produced several world class bowls players so why don't you come and have a go - you could be another Norfolk champion! Children age 8+ wishing to join in should be accompanied by an adult. For more details contact Yvonne Drew 07716 421563. If you, by chance, cannot make the 'free, have a go session' on Thursday 14th March you are very welcome to come along any Thursday evening from 7.00pm until 9.00pm.

We are having a **Coronation Concert and Cakes** event at the Hall on the afternoon of Sunday 2nd June to celebrate the 60th anniversary of the Coronation of Queen Elizabeth II. Get ready for an afternoon of pomp, ceremony and flag waving with a brass (or silver) band and the very best of British home-made cakes. Keep a look out for more details in the near future.

160 Club 2012-13

Renewals are now being collected for the 160 Club monthly draw for the year Feb 2012 - Jan 2013. It costs £12.00 a year to be included the 12 monthly draws. The draws take place on the last Thursday of each month during the Three Holes Carpet Bowls session between 7.00 and 9.00pm held at the Hall. We would love some new competitors for this year's draw and invite you to approach any committee member to purchase a number for the year. If you would like any more information please ring Sally on 773418. Good luck to all our existing competitors and a very warm welcome to any new ones.

UPWELL VILLAGE HALL

Upwell Village Hall A.G.M. took place on Thursday 24th January 2013 and all Officers were voted in once more en bloc (surprise, surprise!)

Neil Morgan – Chairman

Ros Shorting – Vice Chair & Secretary

Amanda Williams – Treasurer

Margaret Morgan – Minutes Secretary

Thank you all for your invaluable help for another year.

Forthcoming Events:

Friday 22nd March – Lincs Ladies Fashion Show. Doors open 7pm for a 7.30pm start. Admission is £2.50 per person which includes a tea or coffee + biscuits. A large variety of ladies clothing, no seconds – all from high street stores such as M & S, Wallis, Next, Top Shop and many others. All garments sold at half price or less. Sizes: 8 to 24. Age range: 16 to 60+ Come on ladies; have a shopping night out without going to King's Lynn or Peterborough. Tickets can be bought from John Spikings (Butchers), Brian Tweed (Butchers) or any committee member.

Easter Sunday 31st March – Easter Fun Morning. 10am to noon. Free admission. Children and adults can enter the bonnet competition, and colouring contest with chocolate eggs being the star prizes. There will also be the egg hunt (weather permitting,) around the playing field; completed sheets receive a chocolate reward. Tea, coffee and various cakes/buns will be available to purchase on the day.

Saturday 22nd June – Race Night in conjunction with the Wisbech Lions. A fun evening not to be missed. You may leave with sore throats cheering your horses on to the finishing post and you might also leave with heavier pockets or purses if you are lucky enough to pick the winners. With £1 bets, an outsider is just what you may wish for. A truly fun filled evening, don't sit at home, come and join in!

Weekly Hall Sessions

Monday 2pm to 4pm Indoor Carpet Bowls
6.30pm to 7.30pm – Aerobics Class with Katie Hunt

Tuesday 10am to 11am Keep Fit Class with Sue Burt
6pm to 9pm Dog Training Classes with Willow Kelly

Wednesday 1.30pm to 4pm Weenies group

Thursday 2pm to 4pm Indoor Carpet Bowls
6pm to 9pm Upwell Ring Craft with Victoria Watkinson

If you would like to book the hall, please contact Dee Harrison on 01945 773735.

**UPWELL PARISH
COUNCIL**

**A QUALITY
COUNCIL FOR A
QUALITY SERVICE**

Chairman:
Prue Lester 01945 772234

Deputy Chair:
Andrew Harrison 01945 773735

Councillors:
Steven Calton 773544
Brian Carr 774145
Chris Crofts 773519
Jill Gooch 773301
Keith Harrison 772661
Margaret Hodgson 772898
Frank Humm 773595
David Pope 773054
Bill Pugh 773129
Chris Robinson 07836 606098
Ros Shorting 773604

Your Borough Councillors Are:
David Pope 01945 773054
Vivienne Spikings 01945 772248

Your County Councillor Is:
Harry Humphrey 01945 430539

Clerk:
Kate Cobby 01945 774272
upwellpc@googlemail.com
29 Listers Road
Upwell
PE14 9BW

Assistant Clerk:
Kate Bennett 01945 774272
katebennett@btinternet.com
7 Blundell Terrace
Station Road
Wisbech St. Mary
PE13 4US

We're on the Web!
www.upwellpc.co.uk



Parish Council Meetings

Unless otherwise stated, all meetings will take place at Upwell Village Hall. The Press and Public are cordially invited to attend any meeting. Residents can address the Council at the start of the meeting but may only speak thereafter with the permission of the Chairman.

April

8 th	Finance	6.30pm
8 th	Parish Assembly (see below)	7.00pm
8 th	Full Council	7.30pm
17 th	Environment & Leisure	6.15pm
17 th	Planning & Transportation	7.30pm

May

7 th	Finance	6.30pm
13 th	Annual Meeting of the Council	7.30pm
15 th	Environment & Leisure	6.15pm
15 th	Planning & Transportation	7.30pm

June

3 rd	Finance	6.30pm
3 rd	Full Council	7.30pm
19 th	Environment & Leisure	6.15pm
19 th	Planning & Transportation	7.30pm



Upwell Parish Council

Parish Assembly

Monday, 8th April 7.00pm Upwell Village Hall

This is a special meeting for the **Public** to hear reports from the Parish and County Council about activities this year.

Come along and meet your Parish Councillors. You can raise any issues you may have regarding the villages or ask about meetings, events or what the Parish Council does for residents.

LED Street Lighting Replacement Scheme - Come and hear about the new streetlights we are planning to install around the village to replace existing lamps.

Starts at 7.00pm prompt. A Full Council meeting will follow at 7.30pm.

**For more information, call the Clerk:
Kate Cobby on 01945 774272**

PERFECT CHOICE
Soft Furnishings By Diane
ROMC Fabrics Wallpapers Curtains Blinds Pelmet
Cushions Upholstery Bedding Poles Tracks
West Hoathly, Main Road, Three Holes, Wisbech, PE14 9JR
Tel: 01945 774330
www.perfectchoiceonline.net