

Winter 2014



Upwell Parish Council

Community Magazine

Inside this issue



QUALITY
PARISH
COUNCIL



FROM THE CHAIRMAN

Dear All,
Welcome to the winter edition of your Community Magazine. I would like to offer everyone best wishes, on behalf of all members of Upwell Parish Council, for Christmas and the New Year.

The crowd that attended the ceremony on Remembrance Sunday at the War Memorial made it clear just how important the Memorial is to the Community and it is good to

be able to report that the work to replant the rose borders should be finished by the time you receive this magazine. I would like to thank Councillors Keith and Andrew Harrison and Brian Carr for their (very) hard work, digging out the old topsoil and the Playing Field Committee for permission to spread this on their land. Fresh topsoil has been brought in and the new roses have been donated by Mike Harper, owner of Poplar Nurseries in Emneth, to whom I offer sincere thanks for his generosity.

I was very surprised to learn from Tony Davies' update on progress with the sale of the late Miss Blunt's property (which can be found elsewhere in this magazine) that a further 15 houses have been added, under the Borough Council's Local Development Framework Preferred Options, to the existing 60 proposed for Upwell and Outwell. Five of these will be on the late Miss Blunt's land, which will benefit the Blunt Family Trust. There will be enough space at the back of the property for the nature reserve she specified in her will. The remaining development will be on grade 1 agricultural land adjoining hers. A twist that requires explanation from the Borough is that the Parish Council's preferred option is the brownfield site that is next to this new Preferred Site! Upwell Parish Council had not been consulted and an attempt to find out why this decision was made without our knowledge and to extract further information on it from the Borough Council has, at the time of writing, run into a stone wall.

If you would like to comment on the Preferred Options: **There will be a further formal consultation on the L.D.F. from January 12th for six weeks. There will be no public meetings but comments can be submitted on a specific form that will be available from the B.C. and will go forward with the Plan to the Secretary of State for the Planning Inspectorate to initiate the Examination process. As soon as this form is available there will be a link to it on our website: www.upwellparish.com**

I know that Upwell are not the only Parish Council to feel strongly about the way in which the Preferred Options were arrived at and the Planning Inspectorate will certainly be made aware of our position.

If you have been trying to contact the Clerk on the 774272 phone number, there was a fault with the phone connection which has now been repaired. I'm sorry if this caused a problem for you. It took several attempts to find out what had gone wrong. Another way of contacting Kate and me is by email via the contacts page on the website.

HASTOE HOUSING UPDATE As I'm sure you're aware, construction of the new properties at Birdbeck Drive is progressing well. Hastoe are now expecting to complete in February. However, we currently expect the properties to be advertised through West Norfolk Homechoice in the week commencing 5th January. Bidding will open on Wednesday 7th January and close at 12pm on Monday 12th January. The properties will only be advertised once. Please note the date of advertisement may change, therefore, the best advice currently is that the properties will be advertised in the coming weeks and applicants should now start to check the website weekly.

It may also be advisable for anyone interested who isn't entirely sure whether they are on the housing register to contact West Norfolk Homechoice as soon as possible to make sure that their application is live.

With thanks to our Advertisers and Distributors, the copy date for the Spring edition of this magazine will be Friday March 6th 2015.

Kind regards,

Prue Lester



Have you ever been to a Village Yard Sale? NO, well you have missed out on an experience.

Village Yard Sales offer you an opportunity to look and buy things that are interesting, useful and the old saying 'one man's rubbish is another man's treasure' from cars to toys, beds, cots, clothes all-sorts of objects. You name it and it can be found at a Village Yard Sale.

It is good fun, and the great part about it is you do not have to leave your home. You only have to put the things you wish to sell in your front garden or

your driveway. Look around your home and see what you do not need any more, and make some money.

So, Upwell Villagers, why not join us on Sunday 7th June 2015 - 9.00 am to 2 p.m.

If you wish to take part in this event, please email:

lcarr182@btinternet.com or telephone Linda Carr 01945 774145 for more information.

This event can only take place if there are 30 homes or more taking part.

Price £5.00 per home (money raised going to Upwell Community Primary School and Upwell Village Hall).

Payment to be paid by 31st March 2015.

The Village Hall will be the focal point for people to purchase a map (20p), showing the houses that are taking part. people will be able use the facilities and buy tea/coffee - cakes.

Navrad's
OF UPWELL

GOOD FOOD - GOOD VALUE

Opening Hours

Monday	Closed
Tuesday	4.00pm - 9.00pm
Wednesday	4.00pm - 9.00pm
Thursday	4.00pm - 9.00pm
Friday	11.00am - 1.30pm 4.00pm - 9.00pm
Saturday	11.00am - 1.30pm 4.00pm - 9.00pm
Sunday	Closed

10% Discount Given On All Telephone Orders Over £16

**105 School Road, Upwell, Wisbech
(01945) 772398**

JUST WINDOWS
(01945) 474373

**uPVC DOUBLE
GLAZED WINDOWS**

QUALITY AND VALUE

THE BARN
Collets Bridge, Elm

Telephone 01945 474373

CHRISTMAS A WHILE AGO - SOME THOUGHTS AND RECOLLECTIONS.

I invited several local people to write down their childhood memories of Christmas and am not only grateful for their prompt responses, but delighted with the results. I hope they trigger some happy memories for you. I wish you all a Happy Christmas and a bright, prosperous, healthy New Year.

Sylvie Short.

1937. My Father died when I was a little girl, so Mother and I went to live in the family home in East London with Grandma and Grandpa, two bachelor Uncles, Charles and Sydney, maiden Aunt Winnie, Uncle George and Auntie Isabel – nine of us altogether! Christmas was a very happy time with such a big family. We all hung a sock up on the bedroom door and I usually got an apple, an orange, some sweets and a toy in mine. Mother and Grandma cooked the usual turkey and, of course, the famous Christmas pudding. Everything had to be washed up and put away before we would all go and get dressed in our Sunday best. After that we were allowed to go into the large front room where there was a lovely coal fire burning – one of my fondest memories. We listened to the King's speech at 3 o'clock and all had to stand up while it was on. Uncle Charles always bought me a new dress and Uncle Syd a new pair of shoes. This went on until I was fourteen years old and started work.

We had sandwiches, fruit, jelly and cake for tea and after tea Grandma used to dress me up as a fairy with tinsel in my hair, a wand and grease-proof paper for wings. Mother used to play the piano and we sang carols. We made paper chains out of sticky paper and had a Christmas tree covered with all sorts of weird decorations – made by hand, of course. Our crackers contained hats and we had various assorted nuts. I still have Grandpa's moustache cup and saucer always used on special days – including Christmas.

Margaret Barnard. (Barney)

Before the Second World War Christmas celebrations were relatively simple. In our case festivities were shared at three venues – our home on Christmas Day then at two Aunts, one on Boxing Day and another on New Year's Eve. Years in the thirties were quite frugal, so presents given were not expensive – often useful gifts (!) like socks and gloves, with perhaps cheap perfume for the ladies as a special treat. Children might find gifts from Father Christmas in their stockings – an orange and sweets with a cheap toy, made in Japan.

The meal on Christmas Day was rather special; we always had a goose, a once in a year treat then, with plenty of vegetables, Christmas pud to follow, beer for the adults and lemonade for the children. There were crackers on the table with party hats. While the women prepared the food the men would go off to the pub at midday and always arrived back late for the meal at 1.30. Words were

spoken! However, after a magnificent repast, all was forgiven and everyone gathered round the wireless to hear the King's message at 3 o'clock.

This was followed by all the men dozing off in their chairs for an afternoon nap. Cups of tea were served at 5 o'clock, then there were endless games of cards until midnight. It was not much fun for children then as the hours dragged by. Times are much better now!

Keith Bradley.

When I was young I remember all the family, including two Aunts and four Cousins, going to Granny's for the whole time from Christmas Eve until the day after Boxing Day. One of my memories was getting an annual from one Aunt and slippers from another, then the next year they would change around. I also remember tables of food – breakfast then huge dinners and a beautiful tea with meats including my favourite – chicken in white sauce. Then we had supper when the table was set again with a full stilton and some ham. We children were allowed Stone's ginger wine as a special treat.

Granny had a large farmhouse, so we kids had a lovely lounge of our own to play in. Woe betide us if we went into Granny's lounge where Dad and my Uncles would play 'nap' (a card game) until the early hours. Dad would drink Seeger's egg flip and Granny would have a little whiskey. Sleeping was a fun time with three girl Cousins all sleeping on the floor in the children's lounge. They were always fun times never to be forgotten.

Jill Clingo.

The atmosphere at Christmas nowadays is much different from what it was years ago when I was a child. My first hint that Christmas was on the way was about mid October when mother bought the dried fruit for the Christmas puddings and Christmas cake. Mother would start by soaking the fruit for the puddings in stout then she would mix the ingredients together and we would all have a stir. It would then be put into a basin, covered with a piece of linen and boiled. Next was the cake; the fruit was mostly soaked in some sherry then mixed up with flour, some glace cherries, peel, chopped nuts and then baked. Mother used to put the cake upside down in a cake tin, make some holes in the bottom of it with a knitting needle and then every few days feed it with a dessert spoon of brandy till it was ready to cover with marzipan and ice in time for Christmas. It was lethal!

Nearer to Christmas Day mother would start making other things – trifles, buns, cream horns etc. Then a day or two before Christmas she would cook a piece of ham, sometimes an ox-tongue and a piece of salt beef. I should not imagine many people do this today, they just buy it from a supermarket, but in those days it was all part of getting ready for Christmas.

Christmas Day you would be up early to see what presents you had got. Presents would be, if you was lucky, a

meccano set which you could add to on birthdays etc, one or two Dinky toys, a couple of annuals – (Beano, Dan Dare...), a game of monopoly or snakes and ladders and some sweets. (Girls would obviously have girl things). If you was really lucky you could get a train set, but they were a little bit expensive back then. There were no play stations, computer games or mobile phones in those days. Mother and Father used to be up early to prepare the food ready for dinner. First the cockerel would be stuffed and put in the oven, then the vegetables – potatoes, sprouts, carrots and parsnips – would be got ready for cooking. These were nearly always home-grown – no frozen veg back then. After that the fire would be lit in the front room ready for dinner with the family later on. The front room was only used at Christmas and on special occasions. Dinner would be served with all the trimmings, and the Christmas pud, made earlier, with a little brandy over the top and some custard would be enjoyed by all.

After dinner the table was cleared and the washing up done, then Mother and Father would sit in their arm chairs and probably have a sleep while I played with my toys and read an annual. After a bit we might all go for a walk to walk the dinner down, but we would be back in time to hear the Queen's speech on the wireless at 3 o'clock. There was no television at that time. Later on we would have tea which would be some of the ham, ox-tongue or salt beef with pickles and chutney – all home made – and some cheese. After that there would be trifles, fancy cakes, mince pies and then the Christmas cake – if you had any room left. For the rest of the evening we would chat and play some games till it was time to go to bed. A most enjoyable day!

Some thoughts on Christmas

I seemed to enjoy Christmas more years ago when I was young. I still enjoy it but it does not seem the same as it did; it seems more commercialised than it was and you get the impression that to enjoy Christmas you've got to buy as much stuff as possible. Some families still get together at Christmas, but a lot of people go travelling off, skiing and the like, which does not seem very Christmassy to me. It must be my age. In the small village where I lived as a child the people used to get together just before Christmas and have a party for the children in the Village Hall. They used to make trifles, jellies and cakes and we all used to go for our tea, then after that we would play games. At the end of the evening we would receive a small present. It was a good evening enjoyed by all; I don't think there has been anything like this for years.

All the best to everyone.

A local smallholder who has lived in Upwell for many years.

We miss the carol singers. We recall at least three groups visiting house to house – the Youth Club, St. Peter's Church and the Wives' Group – with lots of mince pies and punch consumed along the way! Each Church held a

Christmas party for the children which was lots of fun with games and prizes.

How was Christmas different? We enjoyed large family gatherings. We didn't have television to entertain us but we enjoyed family games such as cards, charades, town-country-river, and board games. My Cousin would play the piano and we all joined in a sing-a-long – great fun! Unfortunately television arrived on the scene and with it all the commercialism we see today. Wouldn't it be wonderful today if the start of Christmas celebrations began on 1st December and not the end of September? It was with great excitement that we decked our tree on Christmas Eve.

Mum would make the Christmas puddings weeks before and boil them in a copper which was heated with sticks and coal. We all got to help with stirring the puddings and looked forward to finding a silver sixpence in our piece on the big day. Mum also made the Christmas cake well before wrapping it very carefully and putting it in a drawer, not forgetting to add a little brandy from time to time to enrich it. Icing it was something else!!!

Dick and Anne Godfrey.

A New Pre-school for Upwell

Over the last few years, the governors and staff at Upwell Community Primary School have been made aware of a growing demand for pre-school provision in the village. Early Years advisors have approached us about considering the possibility. Hardly a week goes by without the school receiving an enquiry about pre-school places and sadly these families are often forced to look further afield for these services. Because of the lack of

pre-school provision, Upwell is far less attractive to young families when compared with our neighbouring villages. There is no doubt that many new homes are planned for Upwell in the coming years and if we are to attract young families to settle here, we have to offer comprehensive children's services.

A small steering group of governors and staff have been engaged in a feasibility study and have developed an outline business plan for the construction and management of a purpose built pre-school unit on the primary school site. It would be connected to the school by a linking corridor. This new building will provide places for children from three months through to school age. It is hoped to develop the services to include facilities for

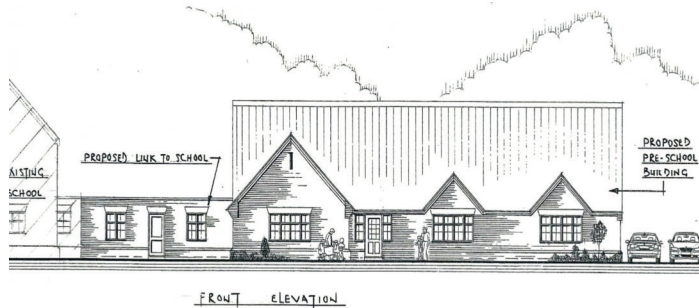
breakfast and after school clubs and to provide childcare during school holidays. Parts of the building could be used by other groups in the village.

We are now at the point where the steering group needs to grow into a committee capable of running a project of this size and complexity. Finding the funding for the project will be the greatest challenge and we will need to harness the expertise that undoubtedly exists in the community to turn these plans into a reality. We are looking for a small number of

people with the skills, knowledge and experience to be part of this committee. If you would like to become involved please contact the school office. There is a short questionnaire below which we would encourage you to complete and you can also find us on Facebook by searching 'A Preschool for Upwell'.

This is an ambitious project, but one that will bring enormous benefits to the village in terms of how attractive Upwell appears to young couples. It should ensure that not only the school but the whole village grows and prospers in the years ahead.

Remember Upwell Primary is a COMMUNITY school and this project is a COMMUNITY project. We hope that we can count on your support.



EXPLORING THE STONE AGE AT WISBECH MUSEUM

In Majestic Class we have been learning about the Stone Age. On 22nd October we visited Wisbech Museum where special Stone Age themed workshops were being held by museum staff, historians and archaeologists.

During the morning we took part in three activities. In one of the activities we went on a museum trail looking for artefacts on display that would help us to answer questions about the life and times of Stone Age people and animals. Some completed copies of the quiz are on display outside the classroom. We learnt how animals began to be used to help man and the development of tools.

Another of the morning activities was cave painting. We had to grind natural materials, chalk and charcoal, into powder and then mix it with water to make the paint. Then we used everyday objects such as sticks and feathers to scratch our designs onto our paintings.



The final morning activity involved handling real artefacts from the Stone Age. The enormous mammoth tooth was very impressive and almost too heavy to hold. Some of the artefacts were up to 400,000 years old so we learnt about careful handling.

In the afternoon there were a further 3 activities for us to enjoy. We found out about the different periods of the Stone Age. What was most fascinating was how man evolved over each of the periods and how new skills and much bigger brains changed the human way of life.

Also we made necklaces. We found out that bones and teeth from animals would often be used as the beads. Many of these teeth came from wolves and the dogs that Stone Age people were beginning to use to help them to hunt and farm.

On the whole it was a very practical day. After finding out about the different tools from the period, the children thoroughly enjoyed making Stone Age axes. Some of these are also on our display as a reminder of what a fantastic day of learning that we had.

We are very grateful to everyone involved in organising and supporting the visit to the museum.

Upwell Community Primary School



Learning and Caring Together

'Good in all areas'

[Ofsted 2013]



Would you like your children to attend a preschool that is attached to the primary school they will attend?

We would appreciate your time to complete this questionnaire in order for us to ascertain and meet future childcare and preschool education needs.

1. Please indicate what type of childcare you currently use or would like in the future.

Type of childcare	Currently Use	Would like
Before/After School Club		
Holiday Playscheme		
Childminder		
Day Nursery		
Pre School Playgroup		

2. Which days/times would you need childcare? Please tick session times required.

Term Time	7am – 9am	9am – 1pm	1pm – 3.30pm	3.30pm – 6pm
Monday				
Tuesday				
Wednesday				
Thursday				
Friday				

15. Would you like to be kept updated on the development?

Yes No

Name _____

Address _____

E-mail address _____

Please state the ages of your children _____

Thank you for taking the time to complete this questionnaire. Your answers will be strictly confidential. Please return this survey to: Upwell Primary School, Brian Tweed Butchers or Spikings Butchers.

For the purpose of research, we would like to be able to contact you again, to ensure that we are meeting the requirements of the parents/carers who will use our facility. Please tick this box if you do not wish to be contacted

Upwell Community Primary School, 61 School Road, Upwell, Wisbech, Cambs. PE14 9EW

Headteacher: Mr James McBurney.

Deputy Headteacher: Haidee Norman SENDCO: Joanne Norman

Tel: 01945 773220 Fax: 01945 774059

UPWELL PLAYING FIELD COMMITTEE

Registered charity 300425

Upwell Playing Field Committee has had a good year overall, with sponsorship for all of our pony shows and the summer fayre from local businesses. **Improvement and maintenance:** we have renewed all the seating around the field; the last of the skate ramps have been renewed and the kids say it is brilliant! The committee has also paved the access gate onto the field; this has been done for wheelchair users and Mums with buggies. Unfortunately there is no funding for further improvements in the car park. All work and materials were provided by our own fundraising and donations; the work was carried out by Norfolk and Suffolk Probation Service/Community Service, without whose help the above work could not have been done. We have had a good year with the **car boot sales**, booters travelling from Chatteris, Dersingham, Littleport and further. The weather was kind to us until we stopped at the end of October. They will resume 2nd April 2015 - same times - sellers 8am and buyers 9am - same price per pitch £5.00. Unfortunately the weather was not so good on **Summer Fayre** day 13th July: rain, rain and more rain, but those that did attend enjoyed themselves. The stall holders will be back in 2015. Due to local sponsorship it was not a total washout - and if you would like a stall or can provide an attraction contact Christine on 01945 774060

The Valentines Dance is booked for Saturday 14th February - the day itself! Raffle prizes are always welcome. Please drop them off with John Spikings or Upwell Post Office.

Pony Shows will resume Saturday 18th April with showing classes in hand and ridden plus some variations through the season.

THE GREEN FINGERS GARDENING CLUB

In the autumn I wrote that the plants had put on a glorious show but were beginning to look exhausted. However, because of the lovely sunshine and the mild weather the gardens have had another lease of life and even now at the end of November, there is still quite a lot of colour to be seen.

The club has had a good year with some excellent speakers and on the whole a good attendance at most of the meetings.

At the AGM Gail, the Treasurer, was able to report that our finances were healthy and the subscriptions would stay the same for the coming year. Gussie gave her chairman's report and asked for suggestions for the coming year. She once again stressed that we do need a Programme Secretary. She thanked all those who had supported and worked for the club during the past year. A vote of thanks was given by Mick on behalf of the members.

A discussion then took place on the election of a committee for the coming year. Some felt that by asking people face to face if they would like to be nominated it

Summer Fayre 2015 is booked for the 12th July and hopefully we will have a sunny day. Raffle tickets will be on sale prior to the summer fayre.

100 Club tickets will be on sale early next year: we run from June – May. Please contact Ros 01945 773604 or John Spikings 01945 773424 for tickets. A further event is planned later in the year with two other local organizations. Further details to follow.

We have suffered spates of **vandalism**. Please remind your children and grandchildren that **CCTV is working 24/7**. Parents have been spoken to but unfortunately no compensation for damage done. All incidents are reported to the police for further investigation.

To end this year our **Christmas Raffle** will be drawn on December 11th at The 5 Bells Inn. Raffle tickets are on sale in various shops in the village £1.00 per book. We are always looking for raffle prizes.

Upwell Playing Field Committee work extremely hard throughout the year to provide Upwell with an open space for leisure and thank the local community for their support.

Sponsors through the year:- Upwell Post Office, A D Hurst, Ray Wilson/K Griffiths, Fred Hartley Estates, G A Seaton Ltd., A R Clingo, Goldings Feeds, Masters & Co, Upwell & District Coaches, Fountain Foods, Russells Fresh Meats, Fen Fab Engineering, S W G Engineering, Kerry Motor Services, Balloon Print, and Robinson's Transport for removing all our garden rubbish and to anyone else I may have forgotten (sorry) and a BIG thank you to all.

*Merry Christmas and Happy Healthy New Year
From Upwell Playing Field Committee.*

was possible to get a more positive response than by just making a general announcement. However, the majority felt that as the present committee were all willing to be re-elected, it was unnecessary to have nominations from the floor. The present committee were then elected en bloc.

Several suggestions were put forward for the coming year and these will be discussed at future meeting.

The winner of the monthly competition was Jackie McCoy, Gussie Smith was second and Miriam Calton was third. Gussie congratulated Jackie and presented her with the trophy.

The final meeting of the year will be the Christmas Party on the 9th December.

The first meeting in January will be on the 20th. The speaker will be Peter Carter on the subject of Using Willow to Support Plants.

If you are interested in coming along as a visitor or new member please ring Gussie on 01945 7725486.

Daisy Hearnden

Are you 65 or over? Need information or advice on things to do, getting out and about, staying safe and well or caring for someone, then...

**ASK
LILY**



Living Independently in Later Years
a directory of services, activities, advice and guidance for older people living in West Norfolk

Available online at www.asklily.org.uk
or by calling 01553 616200



Borough Council of
King's Lynn &
West Norfolk



Lode Orchard Seasoned Hardwood Logs



01945 773279 or 07790 696036

AGRIMECH SERVICES

Electrical and Mechanical Engineers



UK SALES, SERVICE & SUPPORT

HELPING YOU MEET
THE CHALLENGES OF
CHANGING TIMES IN
BRITISH FARMING



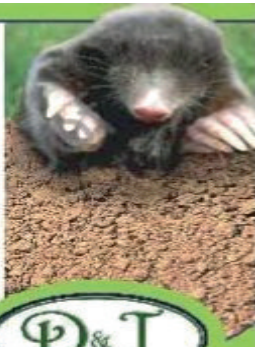
Passionate about machinery automation, completely dedicated to customer service

01354 638222
info@agrimech.co.uk
www.agrimech.co.uk

BAG STITCHER SYSTEMS
WEIGHING & PALLETISING EQUIPMENT
GRADING & HANDLING EQUIPMENT
PLC PROGRAMMING
SERVICE & REPAIRS

www.dandjtransport.co.uk
AG GREG ATE SUPPLIES
01354 740249

- SAND, GRAVEL, BALLAST
- GRANITE, BARK, SLATE
- TOPSOIL, LIMESTONE OPC
- BRICK BATS & TARMA C PLANINGS
- DELIVERD OR COLLECTED
- SAME DAY/NEXT DAY DELIVERY
- LOOSE OR BAGGED
- FROM 1 TONNETO 29 TONNES
- MUCK A WAY SERVICE



01354 740249

Upwell Computer Repairs

**Virus Removal - Upgrades - System Service -
New Machine setups - Wireless setups - Printer setups -
Call out repairs**

Phone - 01945 772717/07849 778525
E-mail - upwellcomputerrepairs@gmail.com

COULD YOU BENEFIT FROM INDEPENDENT FINANCIAL ADVICE?

If you can answer 'yes' to any of the following questions you could benefit from independent financial advice.

- 1 Could your savings and investments be working harder for you?
- 2 Are you worried you aren't paying enough attention to your plans for retirement?
- 3 Worried about the wellbeing of your family should the unexpected happen?
- 4 Have you taken out life assurance or an income protection policy in the last 5 years?
- 5 Have you invested money into an investment or pension without a review from the provider in the last 6 months?
- 6 Do you like the thought of a flexible advice service that can fit around your lifestyle and meet your needs?

Why not enjoy the peace of mind that comes from receiving jargon-free advice on the most appropriate financial products for your personal circumstances.

For a free initial meeting contact: **Colin Freer**

T. 07738 120256 F. 08452 991298 E. Colinfreer@thinkpositive.co.uk
Salts Road, West Walton, Wisbech, Cambs, PE14 7ED

The value of investments and pensions can fall as well as rise, and you could get back less than you invested.

Positive Solutions (Financial Services) Ltd. is authorised and regulated by the Financial Conduct Authority, Registered as a Limited Company in England and Wales No. 3276760. The Financial Conduct Authority does not regulate advice on some taxation matters.



HARNWELL ELECTRICAL LTD

Electrical Engineers & Contractors
Industrial, Domestic, Agricultural & Commercial
Installations.



THE GRANARY, ST PETERS ROAD, UPWELL,
WISBECH, CAMBS PE14 9EH
Telephone: (01945) 773207



FULL MARX
Affordable and effective
tuition in Mathematics

- * Inspiring and engaging lessons
- * Fully qualified and experienced tutor
- * Tuition from Level 2 up to A Level

Tel: 01945 773474 or 07759260443

Email: fullmarxtuition@gmail.com

Website: www.fullmarxtuition.vpweb.co.uk

G & B Superstore

Serving the Local Community
Town Street, Upwell PE14 9DF
Tel: 01945 773507

Opening Hours

Mon-Sun 5.30am- 10.00pm

Newspapers • Wines from the Beers
Alcohol & Beers • Groceries • Food to go
Lottery • Pay Point • Magazines • Cash Point

And local deliveries available now

AUCTION

AT THREE HOLES VILLAGE HALL

Every Friday, viewing all day.
Auction Starts at 6. Pm.

Bring in your unwanted items for auction from
7.30 a.m.

No Need to book.
Hot and Cold meals, snacks & drinks.
All day breakfasts from 11 a.m.

Postcode PE13 9JR

Phone Denny 07751 491268 or 01406 363433

Upwell Royal British Legion

A new committee has been elected to run Upwell
British Legion. We are offering the premises to
groups and societies at a competitive rate.

Anniversary's, Weddings, Wakes, Christenings &
Children's Parties, Bar & Separate Meeting Room

Please contact Alison on 07519949529 or

Pauline on 01945 773276

Charity Number 219279



8 York Row, Wisbech PE13 1EF
www.mcp-law.co.uk
01945 464331

Services provided:

**Family, Property, Crime, Commercial, Employment,
Personal Injury, Wills & Probate, Dispute Resolution**

Town centre location Fixed fees available
Home visits available on request



METCALFE COPEMAN & PETTEFAR SOLICITORS

Crown Service Station (Outwell) Ltd

MOT's Servicing Repairs

Stuart, Kevin and Michael will be pleased to help you with any of your
motoring problems. Give us a call or pop round.

We are now situated on Isle Road, Outwell, PE14 8TD

Class 4 & 7 MOT's now undertaken

01945 773553

garage@thecrownlodgehotel.co.uk

A.R. CLINGO FUNERAL DIRECTORS

- † Family Independent Business
- † Private Chapel of Rest
- † Personal Attention
- † 24 Hour Service

Full estimates given at all times

Golden Charter
Funeral Plans

Pinfold House
St. Peter's Road
Upwell, Wisbech
Phone: 01945 772502



RACHEL LUNN
HOLISTIC HEALTH & BEAUTY

- * REFLEXOLOGY
- * LAVA SHELL MASSAGE
- * STRESS THERAPY
- * INDIAN HEAD MASSAGE
- * HOPI EAR CANDLES
- * BEAUTY TREATMENTS

Home visits available by appointment

Rachel	Lunn	Babtac
Phone:	01945	772283
New Road, Upwell, PE14 9BP		

W. Feary
Painter & Decorator

Good Work At Reasonable Rates
No Job Too Small

Tel: 01945 583381
34 Clarence Road - Wisbech



DOMESTIC HEATING OIL

Quality comes as standard!



**DOMESTIC HEATING OIL,
 GAS OIL & DERV**



QUALITY SERVICE



EXCELLENT PRICES



**PROMPT DELIVERY BY OUR
 FLEET OF 11 TANKERS**



ESTABLISHED OVER 40 YEARS

**CALL US
 FREE ON**

**PETERBOROUGH
 0800 083 7861**

**HUNTINGDON
 0800 083 7862**

**WISBECH
 0800 083 7863**

**OUNDLE
 0800 083 7864**

WWW.SS-MOTORS.CO.UK

AND ALL SURROUNDING AREAS

Upwell Cemetery - Self Management or Borough Council?

Councillor David Pope suggested that we both set out thoughts on whether the Parish Council should take over the maintenance of the Cemetery; here are mine.

A Cemetery should be a place, to 'comfort those who mourn' in so far as it is possible; and where those who have departed this life can rest in peace, in a well-tended and respectful setting. The same goes for St Peter's Churchyard.

While I understand that the Borough Council are under great pressure financially, for most of this year our Cemetery has been a sorry mess! (Although St Peter's has been in a better state). The team visit at best every four weeks, sometimes not for six and in that time the grass and the weeds get out of hand. That's to say nothing of the overgrown laurels, the spoil stacked up at the far end, the rabbits undermining the fence, creeping buttercup, ground elder, dandelions seeding everywhere.... I could go on.

There is an issue which keeps cropping up at the monthly parish council meetings, regarding the maintenance and quality of care at both the cemetery and Upwell churchyard.

I have a vested interest as I am both a parish and borough councillor so therefore I get a more 'hands on approach,' especially as Mintlyn and Cemeteries are in my Portfolio area. Although this dissatisfaction by a parish councillor has been bubbling away all year, to such an extent that she has sought a quote from a private contractor to do the work, and take away the work from the borough council operatives. This is very short sighted, albeit that her quote, at the moment, is cheaper than what the borough council charges Upwell on its Special Expenses. Under government instruction, Special Expenses cannot be increased for at least two years by the borough, so therefore the work has to be done, regardless of cost, for the same price.

There seems to be an issue on the quality of workmanship. I would agree that during the Spring the standard of work did fall below what was expected. The borough council had three men off work, two through illness and one disciplinary. As these teams work to a tight schedule throughout the year it put pressure on the work force. The teams were made up and since then everything has gone to plan and the quality has improved.

I have lived and worked in Upwell for all of my life, and for the past 35 years, next to Upwell churchyard. I can honestly say that I have never seen it in better condition and both sites compare favourably with any other in West Norfolk. During that time I have seen parts of the church wall knocked down: if this was to happen under the new regime there could be a huge additional cost to the people of Upwell. The Church say it is the responsibility

Enough to say that I have found a contractor who maintains a large number of other Cemeteries in other local Parishes who will visit every two weeks, employs specialist teams who understand the sensitive nature of what is entailed, fully insured, he will offer a much higher standard of work and for a lesser cost. Figures from Mintlyn Crematorium indicate that over the last five years the revenue from Upwell far exceeds the amount the Borough Council spend on it and I would like to see those funds dedicated to our Churchyard and Cemetery, permitting a transformation from the sad and neglected place we see today to the one I described in my first paragraph.

Councillor Pope is of the opinion that taking it over may become a millstone round the necks of a future Parish Council, but I disagree. Virtually all the other Parish Councils manage their own and I don't see why Upwell should be any different. Where there's a will there's a way!

Prue Lester

of the borough to do the maintenance and I am grateful that this cost stands with the borough council, with a small charge on Upwell's Special Expenses.

The choice is that by taking it away from the borough the parish will assume overall responsibility for both sites. All additional work done by borough council operatives is free of charge to the local council tax payer. With a private contractor any extra work will be charged for. Already there is a wish list for extra work to be done and we have been told that they need to be priced up, this is on top of the contractual price. Again with the borough these jobs would be free of charge.

We must knock this idea on the head because there is a much larger issue ahead. If the parish council goes ahead with their proposal, the borough council will be relieved of their responsibilities and I have been given an assurance that no way in the future will they ever take them back again. It will be left entirely in the hands of the people of Upwell, and at what cost, forever more. This is just too big a step to take, which has risk, to leave to the future residents of Upwell.

At the moment there is limited enthusiasm to take this venture on, what happens in the future where budgets are further squeezed as to where on the list of priorities this will stand. If funds are tight it could fall back into a neglected state, which it has done in the past.

I urge all residents to voice their opinion and support the status quo, because at the moment we know what service we are getting and the alternative is the uncertainty of not knowing what is going to happen in the future.

David Pope

Parish Councillor

Borough Councillor for Upwell with Delph



Upwell Jazz Club 2014
Three Holes Village Hall (Sat Nav PE14 9JY)

Sunday 2nd November
Guests: Laurie Jacobs - sax
John Pini - guitar

A very welcome return visit to Upwell Jazz Club by Peterborough-based saxophonist Laurie Jacobs accompanied John Pini on guitar.

Backed on keyboards by Nigel Portass and Nigel Smith on drums.

Information from Nigel Smith on 01945 773121
Bar, fresh rolls, crisps and savouries available.
Time: 12.30pm – 2.45pm.
Admission: £5.00. Under-16s Free



Cambridgeshire Care

A HELPING HAND WHEN YOU NEED IT MOST

Care in the comfort of your own home from one of the larger independent companies established in 1995. We deliver Care all over East Anglia

Maybe you are recovering from an operation and just need a little help around the house or maybe you require full time care for yourself or a loved one give Cambridgeshire Care a call and let us take care of you

From our initial free, in depth assessment to the structuring and delivering of your bespoke care package - Cambridgeshire Care will help to guide you every step of the way.

Please telephone for further information or advice

FREEPHONE 0800 7316502



5 Church Street
Peterborough
PE1 1XB

The only choice for homecare

L HIGHBURY SCHOOL OF MOTORING L

- Learner Driver & Refresher Lessons
- Friendly, Female Instructor
- Intensive Courses
- Pass Plus Registered
- DSA Approved

MOBILE: 077233 20333

EMAIL: highburysom@gmail.com

Bramley House



Cattery

An exclusive ten chalet holiday home where your pet will receive 5 Star care and attention

Call Angie on 01354 638071 or 07810 563 523

GLEN STITTLE

Complete Bathroom Installations



General Plumbing
Wall & Floor Tiling
Kitchens Installed

07845 601076 - Day
01945 773638 - Evening
www.glenstittle.co.uk

Brian Tweed

Family Butcher
Town Street, Upwell.

Tel: 01945 773248

Fresh beef, pork, lamb and poultry.
Our specialities are home made sausages and burgers.
Home cooked ham, roast beef, roast pork and haslets.

Peter J Brown & Son Electrical Contractor

Est 1966

- Commercial and Domestic
- Installations and Maintenance
- Periodic Test and Inspections



Tel: 01945 773377 / 772368
Mobile: 07860 293837

Beauty Treatments by Jane

J
JESSICA*
Manicures &
Pedicures



dermalogica® skin
skin care system

N.V.Q. - o.p.i. - Babcac
Rose Cottage, Christchurch,
Telephone: 01354 638378

UPWELL PARISH
COUNCIL

A QUALITY
COUNCIL FOR A
QUALITY SERVICE

Chairman:
Prue Lester 01945 772234

Deputy Chair:
Jill Gooch 01945 773301

Councillors:

Steven Calton	773544
Brian Carr	774145
Chris Crofts	773519
Andrew Harrison	773735
Keith Harrison	772661
Margaret Hodgson	772898
Frank Humm	773595
David Pope	773054
Bill Pugh	773129
Chris Robinson	07836 606098
Ros Shorting	773604

Your Borough Councillors Are:
David Pope 01945 773054
Vivienne Spikings 01945 772248

Your County Councillor Is:
Harry Humphrey 01945 430539

Clerk:
Kate Bennett 01945 774272
upwellpc@googlemail.com
3 Sayers Crescent
Wisbech St. Mary
Cambs
PE13 4AS

New Website!!

Check out our new
website:

www.upwellparish.com



Upwell Parish Council

Meeting Dates For
2014/5

Unless otherwise stated, all meetings will take place at Upwell Village Hall. The Press and Public are cordially invited to attend any meeting. Residents can address the Council at the start of the meeting but may only speak thereafter with the permission of the Chairman.

October

6th Full Council 7.00pm

November

3rd Full Council 7.00pm

December

1st Full Council 7.00pm

January

5th Full Council 7.00pm

UPWELL PARISH
COUNCIL
CHRISTMAS LIGHTS
COMPETITION

THERE WILL BE A SINGLE TROPHY
AWARDED FOR THE MOST IMAGINATIVE
DISPLAY OF CHRISTMAS LIGHTS IN THE
PARISH;

ALL THREE VILLAGES,
UPWELL, THREE HOLES AND LAKES END
WILL BE INCLUDED
JUDGING WILL BE ON
THURSDAY 19TH DECEMBER

THERE IS NO NEED TO ENTER. ALL
DISPLAYS WHETHER AT DOMESTIC OR
BUSINESS PREMISES WILL BE
CONSIDERED

PERFECT CHOICE

Soft Furnishings By Diane

Fabrics Wallpapers Curtains Blinds Pelmet
Cushions Upholstery Bedding Poles Tracks

West Hoathly, Main Road, Three Holes, Wisbech, PE14 9JR

Tel: 01945 774330
www.perfectchoiceonline.net