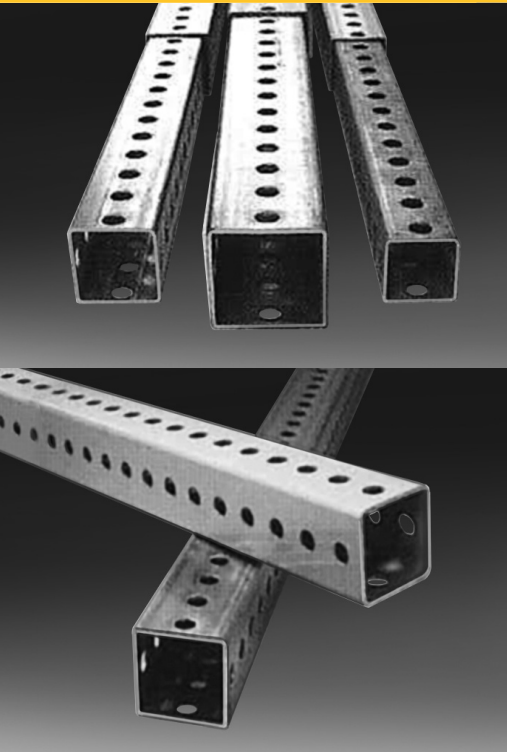


SQR-LOC[®] Perforated Sign Support

SIGN POSTS & SIGN SUPPORTS



SQR-LOC® Perforated Sign Support

MATERIAL

Steel posts conform to ASTM A653 Grade 50, Standard Specification for Steel Sheet, Zinc Coated (Galvanized) or Zinc-Iron Alloy Coated (Galvannealed) by the Hot-Dip Process.

SHAPE

The cross section on the sign support post is carbon steel tube formed to a square and welded directly in the corner by high frequency electric resistance welding and externally scarfed to match the corner radii.

FINISH

The galvanized part conforms to ASTM A653, G90, Structural Quality, Grade 50. The corner weld is zinc coated after scarfing. The galvanized post has a minimum 0.5 mil of clear acrylic polymer coating applied as a rust preventative.

HOLES

All four sides feature holes that are 7/16" diameter, ($\pm 1/64$ ") on one-inch centers through the entire length of the post. Holes are on the centerline of each side, in alignment with and opposite each other directly and diagonally.

TELESCOPING PROPERTIES

The finished post is straight and has a smooth, uniform finish. All consecutive sizes of square tubes telescope freely and for not less than ten feet of their length without the need to match any particular face to any other face. All holes and ends are free from burrs.

Specifications

Nominal Outside Dimension	Available Gauges (Nominal ASTM A924)			Squareness Tolerance	Twist Permissible in 3' Length	Outside Tolerances at Corners (All Sides)
	10 (.134")	12 (.109")	14 (.083")			
1-1/2" x 1-1/2"		X		$\pm .009$ "	.050"	$\pm .006$ "
1-3/4" x 1-3/4"		X	X	$\pm .011$ "	.062"	$\pm .008$ "
2" x 2"		X	X	$\pm .012$ "	.062"	$\pm .008$ "
2-1/4" x 2-1/4"		X	X	$\pm .014$ "	.062"	$\pm .010$ "
2-1/2" x 2-1/2"	X	X		$\pm .015$ "	.075"	$\pm .010$ "

Outside Dimensions: Measurements are made at least 2" from the end of the tube.

Wall Thickness: Permissible variation in wall thickness is $+.011$ ", $-.005$ ".

Length: The length of each post have a permissible length tolerance of $-1/8$ ", $+3/4$ ".

Convexity and Concavity: As measured in the center of the flat sides, do not exceed $\pm .010$ ", determined at the corner.

Corner Radii: Standard outside radii are $5/32$ ", with variation of $\pm 1/32$ ".

Straightness: Permissible variation in straightness is $3/16$ " in a 10 foot section.

DISTRIBUTED BY



2-23
WWW.VALTIR.COM
1.888.356.2363