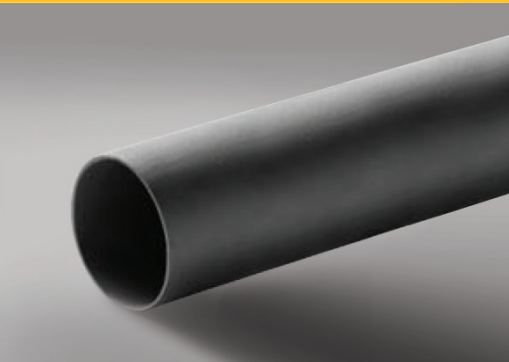


POZ-LOC[®] Round Sign Support

SIGN POSTS & SIGN SUPPORTS



POZ-LOC® Round Sign Support

TRAFFIC POST FEATURES

- Electric resistance welded from hot-dipped galvanized steel sheet conforming to ASTM specifications A-653-G90 commercial weight.
- Galvanized inside and out.
- Produced to ASTM A-787 specification for welded mechanical tubing.
- Clear acrylic protective coating.
- Available with electrostatic powder coating for years of additional life in five colors.
- Available in 2-3/8" diameter.

SOCKET AND WEDGE SYSTEM FEATURES

- POZ-LOC® Socket System is a cost effective way to install small signs without digging, concrete, threading, or nuts and bolts.
- Top of the socket is installed flush with the ground to help minimize damage to the socket system upon vehicle impact within NCHRP Report 350 crash test standards.
- Tested to NCHRP Report 350 and designed to AASHTO guidelines.

CORROSION RESISTANT AGAINST DAMAGING SUBSTANCES SUCH AS:

- Rust
- Chemicals
- Salt
- Fertilizers
- Insecticides
- Fungicides
- Motor oils
- Gasoline

POZ-LOC Post and Socket Assemblies

Post available from 8' to 16' in 1' increments

POZ-LOC Post Size	O.D.	Wall (Nominal)	Weight	Colors	Other Options
2"		0.055" (1.4 mm)	1.36 lb/ft (2.02 kg/m)	High-Visibility Yellow	Pre-Punched with 15-Hole Pattern
2"	2.375" (60.325 mm)	0.065" (1.65 mm)	1.60 lb/ft (2.38 kg/m)	Clear Coat	With Hot-dipped Galvanized
2"		0.080" (2.03 mm)	1.96 lb/ft (2.92 kg/m)	Interstate Green	Mounting Brackets (#206 100/box)
2"		0.095" (2.41 mm)	2.313 lb/ft (3.44 kg/m)	Transit Black	including nuts and bolts.
				National Park Brown	
				White	

DISTRIBUTED BY



WWW.VALTIR.COM
1.888.356.2363

11-22