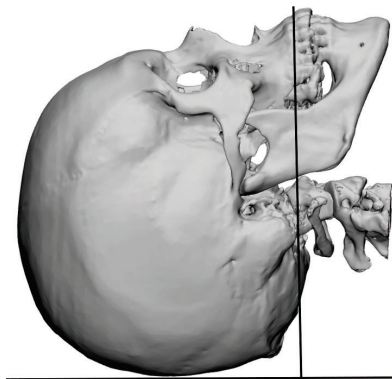




# CT SCAN PROTOCOL

**For the manufacturing of a Customized Skull Implant, Customized Craniofacial Implant, Fusion Skull Implant, or Fusion Craniofacial Implant.**

Accurate CT Scan data and having recent DICOM CT images that adhere to the guidelines and parameters listed below is critical in reducing turn-around-time, and providing the precise fit of Kelniam's custom cranial and craniofacial implants.



### Scanning Parameters

Acquisition	Axial/Helical
Field of View (FOV)	20-25cm
Gantry Tilt	0~
Occlusal Plane	Correct position of the patient
Spacing	$\leq 1.25\text{mm}$
Slice Thickness	$\leq 1.25\text{mm}$
Algorithm	Standard (not bone or detail)
MA	170/>280
Time	1-second





## **Scanning Guidelines**

- Stabilize the patient. The patient must remain completely still through the entire scan. If patient movement occurs the scan will need to be repeated to achieve a conforming scan.
- Include the entire defect plus 2cm above/below the area of interest.
- The Gantry tilt should be set to “0” and use the standard algorithm format.
- Archive the DICOM uncompressed image data (not raw data) to the accepted archive media listed for your scanner.
- Important position or details should be noted and an asymmetrical element of the patient to indicate left and/or right.

## **Accepted Media Types**

- PowerShare Image Sharing - Participating HUB Hospitals or imaging centers connected with Kelyniam.
- FTP/Web Upload Tool - Upload the patient-specific DICOM zip/compressed image files via our secured FTP/Web Upload Tool. Request via email at [info@kelyniam.com](mailto:info@kelyniam.com).
- CD - Mail CD with DICOM images to Kelyniam Global, Attn: CD Upload

## **Contact Information**

- 97 River Road  
Suite A  
Canton, Connecticut 06019, USA
- Toll Free: (800) 280-8192
- Fax: (501) 641-2000
- Email: [info@Kelyniam.com](mailto:info@Kelyniam.com)

