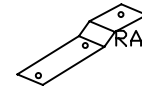
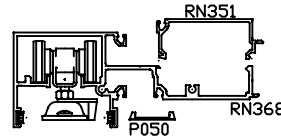
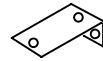


FLUSH SLIDER ASSEMBLY

Lay out pieces as shown then follow steps

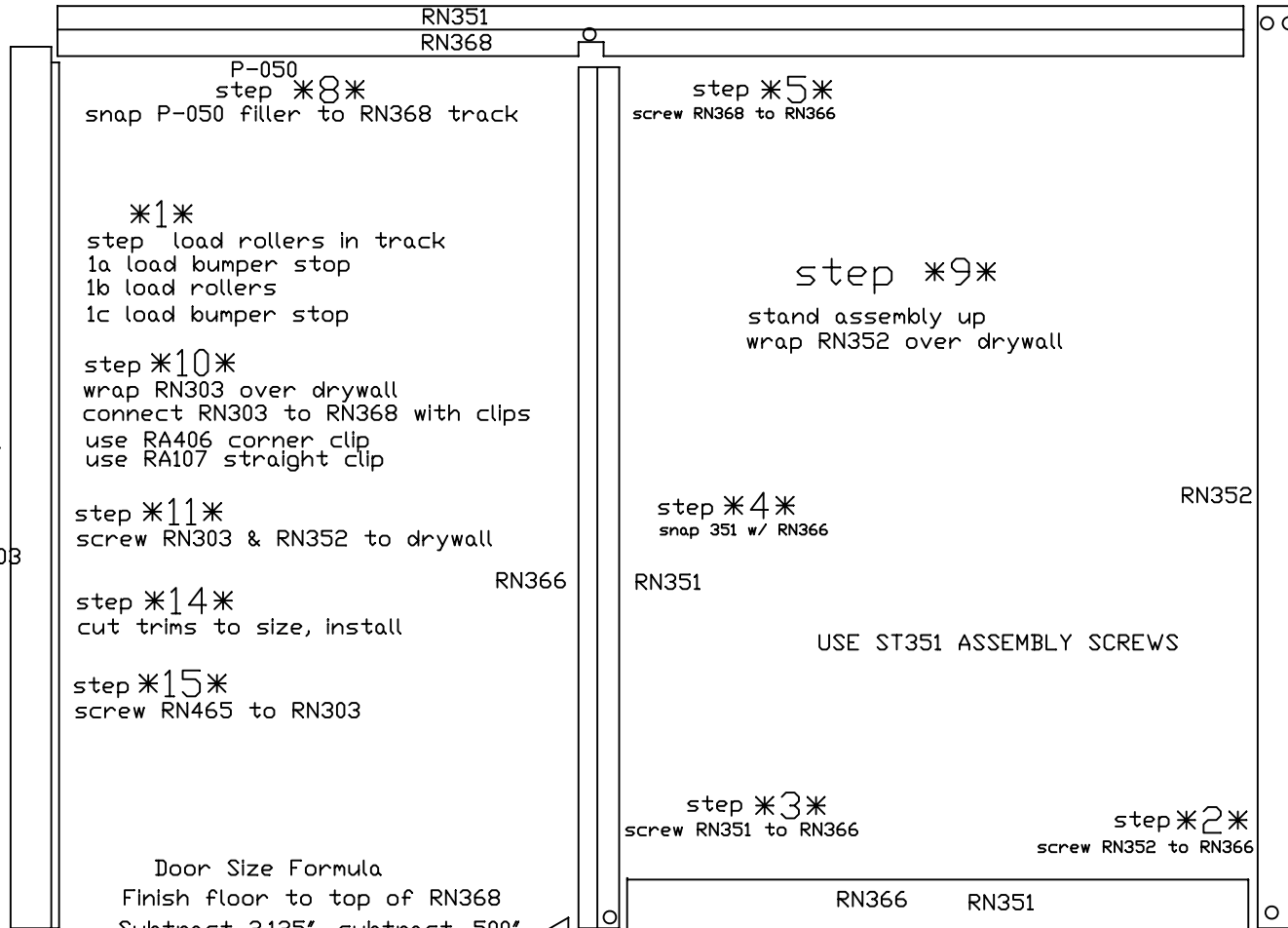
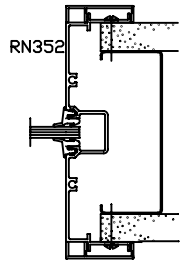
RA406 corner clip



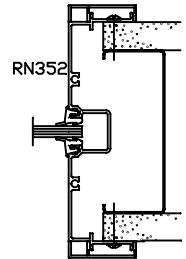
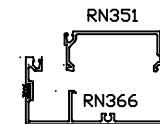
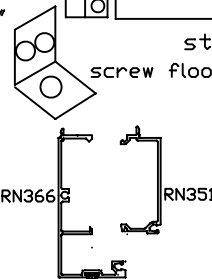
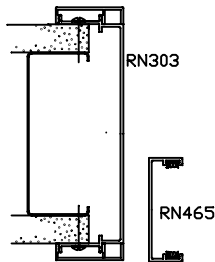
RA107 straight clip

step *7*
snap RN351 to RN368

step *6*
screw RN352 to RN368



step *13*
 13a hang door
 13b engage bottom of door over floor guide pin
 13c slide door to open and close adjust rollers if needed
 13d close lever handle on the roller plates



step *12*
screw floor guide to strike jamb