



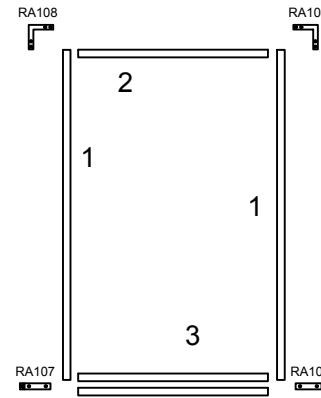
SOLUTIONS II Borrowed Light Full and Partial Height

FRAME MUST BE INSTALLED PLUMB AND SQUARE

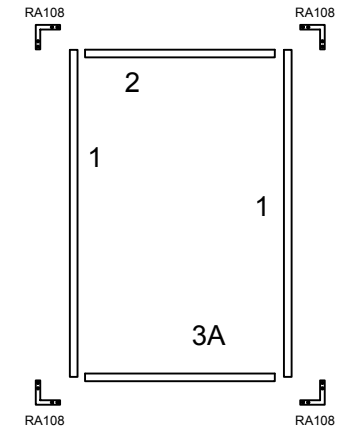
NOTE: TRIM REQUIRES FIELD NOTCHING AT EACH CLIP CONNECTION

General Installation Guidelines

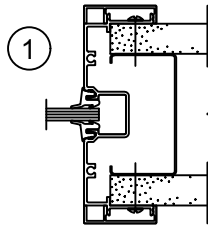
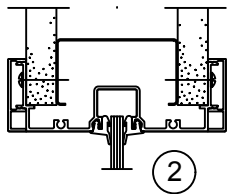
1. INSTALL VERTICALS OVER WALLS LOOSE
2. INSTALL HEADER OVER WALL, AND SET SILL CAN ON FLOOR. CENTER EACH IN WALL.
 - 2A INSTALL BASE OVER DRYWALL IN BETWEEN VERTICAL (PARTIAL HEIGHT)
3. PULL ONE VERTICAL TO HEADER AND ATTACH CORNER CLIP. LEVEL JAMBS AND HEADER AND ATTACH TO WALLS
4. SCREW SILL CAN AND BASE TO FLOOR
 - 4A SCREW SILL TO WALL (PARTIAL HEIGHT)
5. PULL OTHER JAMB TO HEADER AND SILL. ATTACH CLIPS TO CORNERS AND FASTEN JAMBS TO WALL.
6. INSTALL ONE SIDE OF VINYL. INSTALL GLASS AND REMOVABLE STOP AND FINISH GLAZING VINYL



FULL HEIGHT



PARTIAL HEIGHT



FULL HEIGHT
CUT FORMULA
HEAD AND SILL = DAYLIGHT OPENING
WALL JAMB = ROUGH OPENING - 3/8"

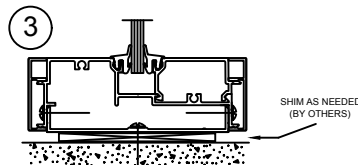
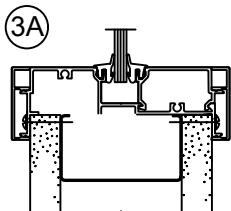
ROUGH OPENING
HEIGHT = DAYLIGHT OPENING + 3/4" + BASE HEIGHT
WIDTH = DAYLIGHT OPENING + 1-1/2"

INVERT STUDS AT VERTICALS, HEAD, AND BASE

PARTIAL HEIGHT
CUT FORMULA
HEAD AND SILL = DAYLIGHT OPENING
WALL JAMB = DAYLIGHT OPENING + 1-3/8"

ROUGH OPENING
HEIGHT = DAYLIGHT OPENING + 1-3/4"
WIDTH = DAYLIGHT OPENING + 1-1/2"

INVERT STUDS AT VERTICALS, HEAD, AND BASE

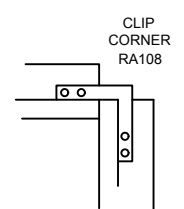
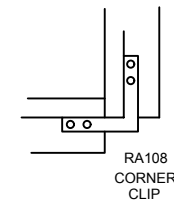
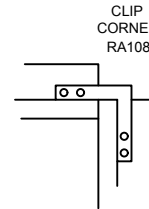
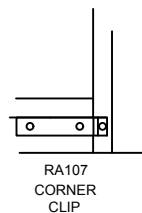


FULL HEIGHT SILL DETAIL

FULL HEIGHT HEAD DETAIL

PARTIAL HEIGHT SILL DETAIL

PARTIAL HEIGHT HEAD DETAIL



NOTE: CHECK WALL THICKNESS AND ROUGH OPENING DIMENSIONS, DO NOT PROCEED UNLESS THE DRYWALL IS WITHIN TOLERANCE.

NOT TO SCALE

REVISED 3/7/2017