

# BD-BIOCAST

MICROBIAL PLANT STIMULANT WITH ORGANIC ACID & AMINO ACID PROFILE

Broadcast or Side Band application | Rate: 32 oz per acre | Spring

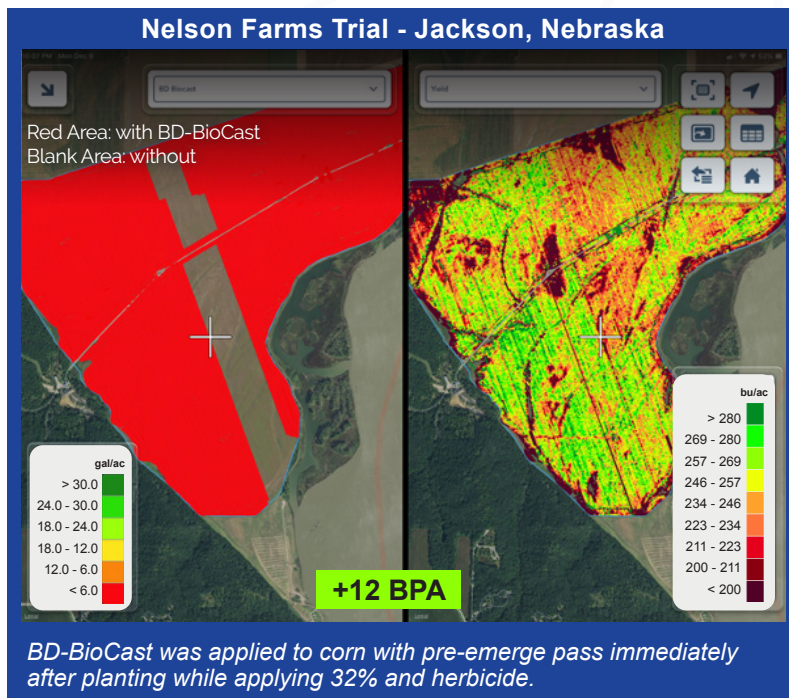
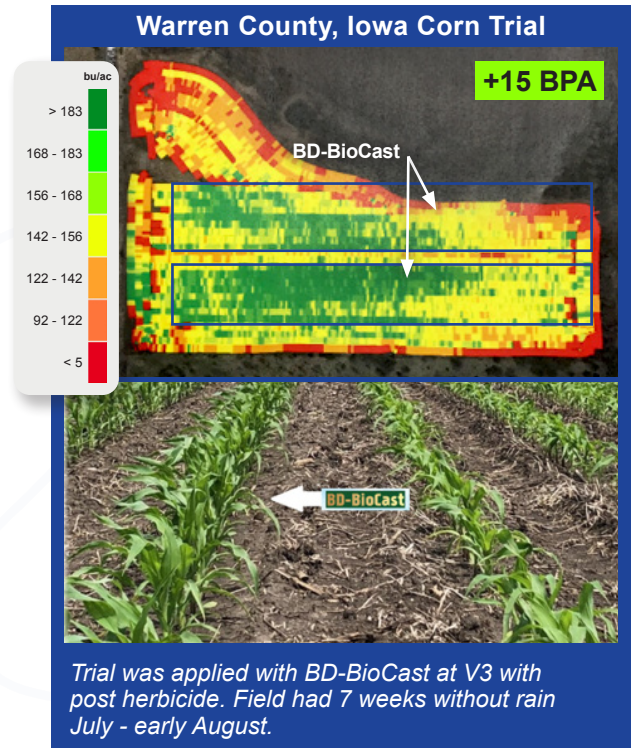


## The all-around plant performance champion. For every operation.

**BD-BioCast** contains all the beneficial microbe teams in ENVIRONOC 401, but amplified with the added benefit of organic acid profiles and amino acid profiles derived from plant protein hydrolysates. The robust team of microbes generate biological diversity in the soil to solubilize nutrients and provide continued sustenance, while the organic and amino acids help chelate micronutrients and encourage additional uptakes of key nutrition and H2O by the plant, leading to healthier, larger plants and increased yield potential.

**No in-furrow? No problem.** This product is specifically designed for broadcast or side band applications, so all growers can utilize the performance properties found in BD-BioCast.

**What you'll see.** Fields applied with BD-BioCast will see increased stand emergence and uniformity, enhanced crop vigor, larger and deeper root mass, and overall plant health through the reduction of plant stress due to environmental factors.



## AGRONOMIC WINS

### Sustained Biostimulant Release

Soil penetration ability allows for continual biostimulant sustenance to plant and soil.

### Plant Growth & Health

Healthy plant vigor, emergence, stand quality and uniformity to protect against plant stress factors.

### Carbon Source

Provides carbon that feeds plant and soil microbial population.

### Micronutrient Availability

Valuable organic acids chelate micronutrients to be taken up by the plant.

### Application Versatility

Designed for those who do not have in-furrow capabilities and can be used pre or post planting.



# BD-BIOCAST

MICROBIAL PLANT STIMULANT WITH ORGANIC ACID & AMINO ACID PROFILE

Broadcast or Side Band application | Rate: 32 oz per acre | Spring



## STORY COUNTY IOWA CORN TRIAL DATA





	Total Dry Yield (bu)	Avg. Dry Yield (bu/ac)	Wet Weight (lb)	Avg. Wet Weight (lb/ac)	Avg. Mstr (%)	Area Worked (ac)	
Untreated	3,239.63	223.97	197,570.8	13,659.12	21.95	14.46	= <b>+7.3 BPA</b>
Full Operation	64,051.57	214.43	3,934,743.39	13,172.61	22.39	298.7	
BioCast	1,550.1	231.26	94,474.15	14,094.73	21.9	6.7	





## The Versatility of BD-Biocast

Makes it the all-star for plant growth.

- Broadcast application
- Use for pre or post application
- Easy to add to other spray mixes
- Use on all crop types- corn, soybeans, wheat, forages, specialty crops, and more
- Option for those not fertilizing soybeans or other crops

### PROVEN RESULTS ON

...And More. Independent and institutional studies will continually be performed across a variety of plants and crops to advance the positive impact of BD-Biocast.

## Better Biology Performs

