



SWT-2500 Dual Radial Shockwave Device

# Conditions Treated

1. Ankle: Achilles Tendon
2. Arm: Golfer's Elbow
3. Arm: Tennis Elbow
4. Arthritis: Knee Arthritis
5. Back: Lower Back Pain
6. Back: Upper Back Pain
7. Foot: Morton's neuroma
8. Foot: Gout
9. Hand: Wrist Carpal Tunnel
10. Heel: Heel Spur
11. Heel: Plantar Fasciitis, Bone spur
12. Hip: Greater Trochanteric Pain – Bursitis
13. Jaw: TMD
14. Knee: Jumpers Knee
15. Knee: ACL Recovery
16. Leg: Hamstring
17. Lymph Nodes: Lymphedema
18. Neck: Multiple Pain Conditions
19. Osgood: Schlatter Disease
20. Shoulder: Calcified Tendonitis
21. Spine: Spinal cord injury, Scoliosis, Sacroiliitis, Coccydynia
22. Optional Treatment: Body: Cellulite
23. Optional Treatment: Sexual Wellness: Erectile dysfunction



# Benefits

- Low Cost compared to other Pneumatic Radial Shockwave Devices
- Low monthly Payment
- Quick ROI
- Brings in new patients
- Gives existing patients relief from chronic pain
- Gives your practice a renewed sense of purpose
- High Quality German engineered
- Easy operation
- Low maintenance cost
- 3-yr. warranty
- 50-Patient Shockwave Brochures
- 20-Tutorial videos
- 5-hr training video course with certificate
- 10" Tablet w/Holder for Portal
- Shockwave Education Portal
- Treatment Guidance Portal
- Clinical Trials Portal
- User & Maintenance Manual



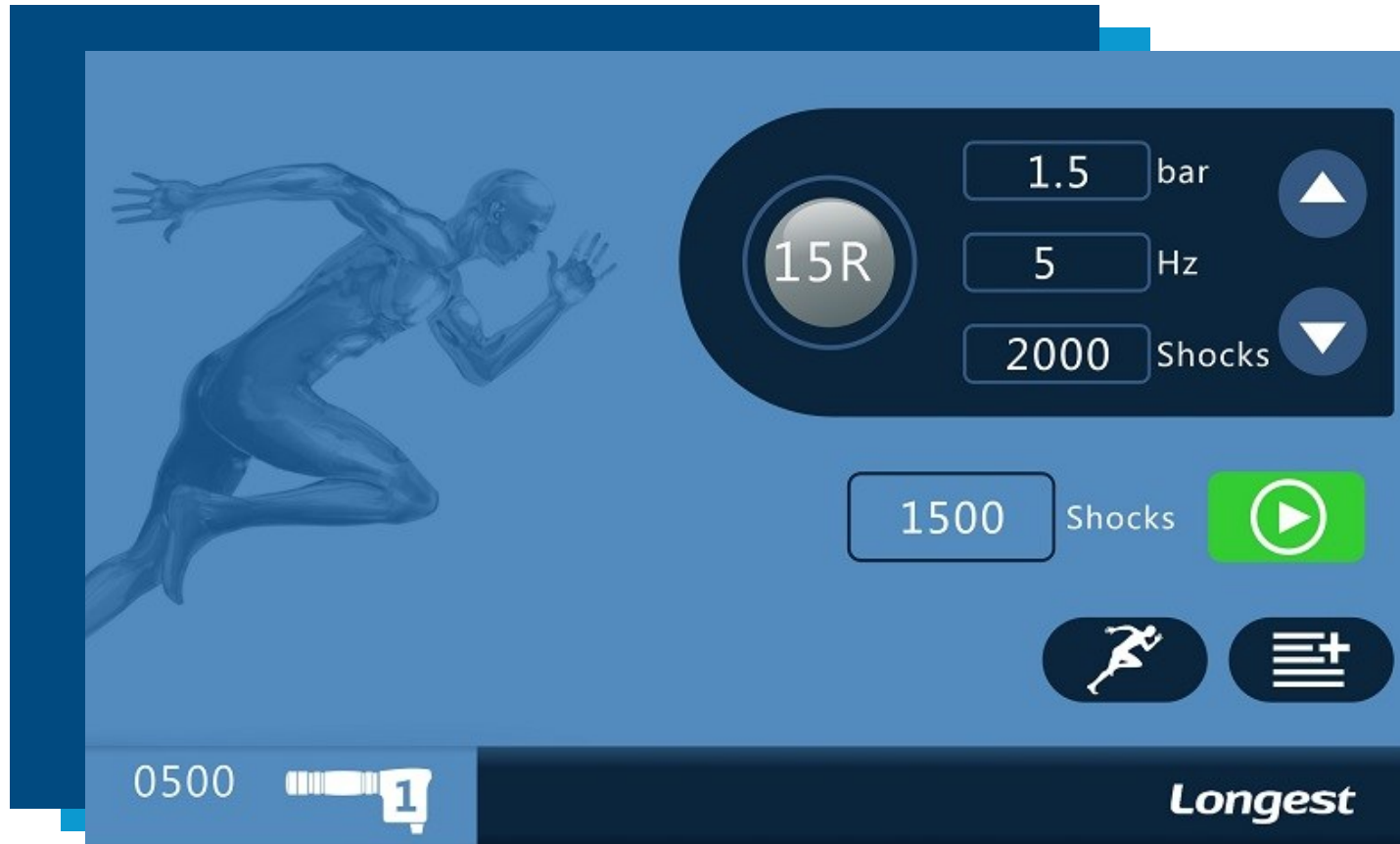
# Features

- Dual-channel design
- Pre-programmed protocols
- Silent built-in air compressor
- Vibration handpiece for muscle relaxation
- 3-Tier Work Cart
- 3-Transmitter heads
- 10" Tablet w/Holder for Education and Guidance Portal
- 7" color touch screen
- 10 languages support
- Ergonomic handpiece, 2-million shocks tested
- Rapid software update via USB port
- Support user file PDF download
- Certificates: CE, FDA, HC, TGA, NRTL, ISO 13485, MDSAP, CFS



# Features

## Easy Treatment Setting Touch Screen



# Features

---

## Comfortable Ergonomic Handpiece



# Features

## Easy Working Grip



# Features

Six Transmitter Heads to Treat Muscleskeletal, Erectile Dysfunction, and Cellulite conditions





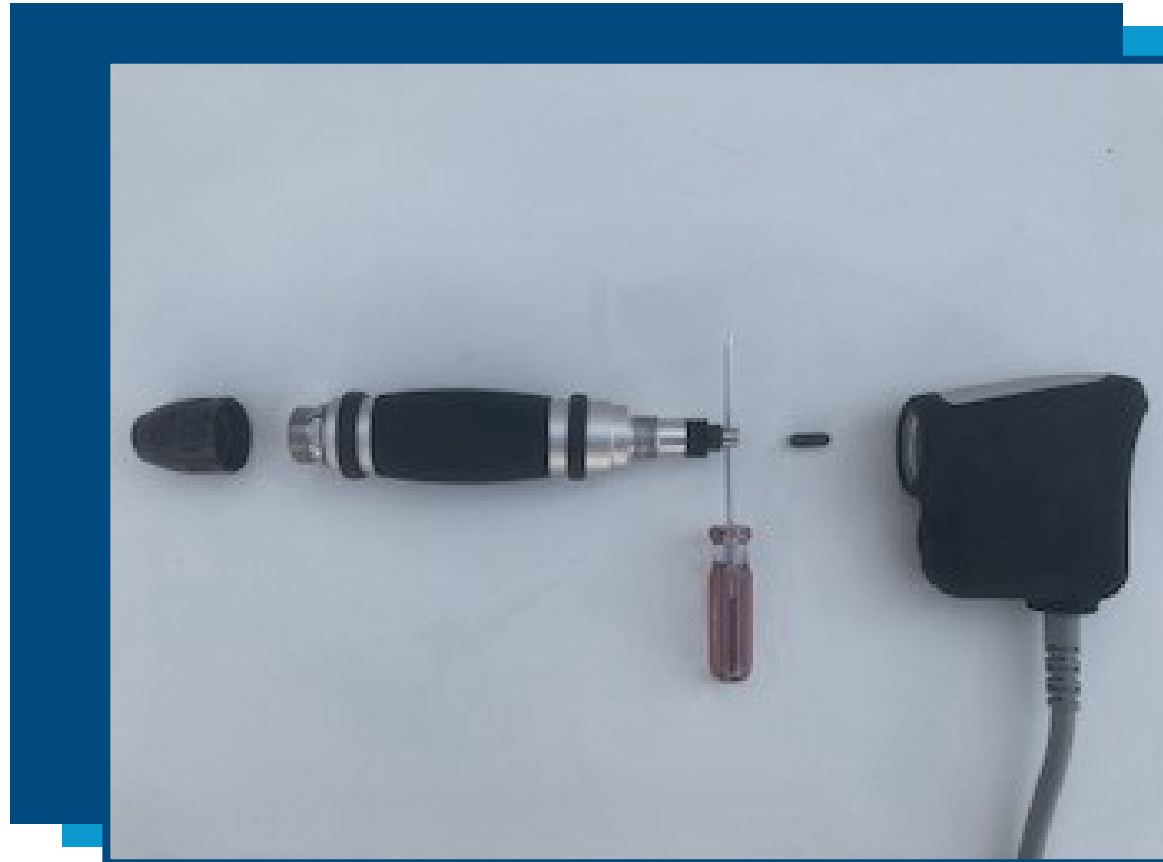
# Features

## Simple Low-Cost Maintenance



# Features

## Periodic Brush Cleaning and Lubrication of the Bullet Tube



# Features

## Work Handle and Transmitter Head Plastic Case



# Features

## 10" Tablet with Mounting Bracket for Educational Tablet



# Tablet Features

## Shockwave Education and Treatment Guidance Tablet

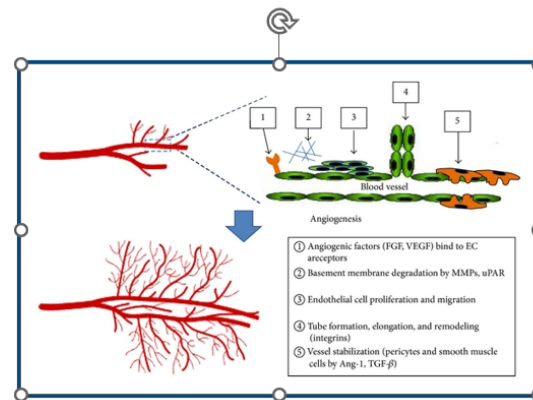


# Tablet Features

## How Shockwave Works

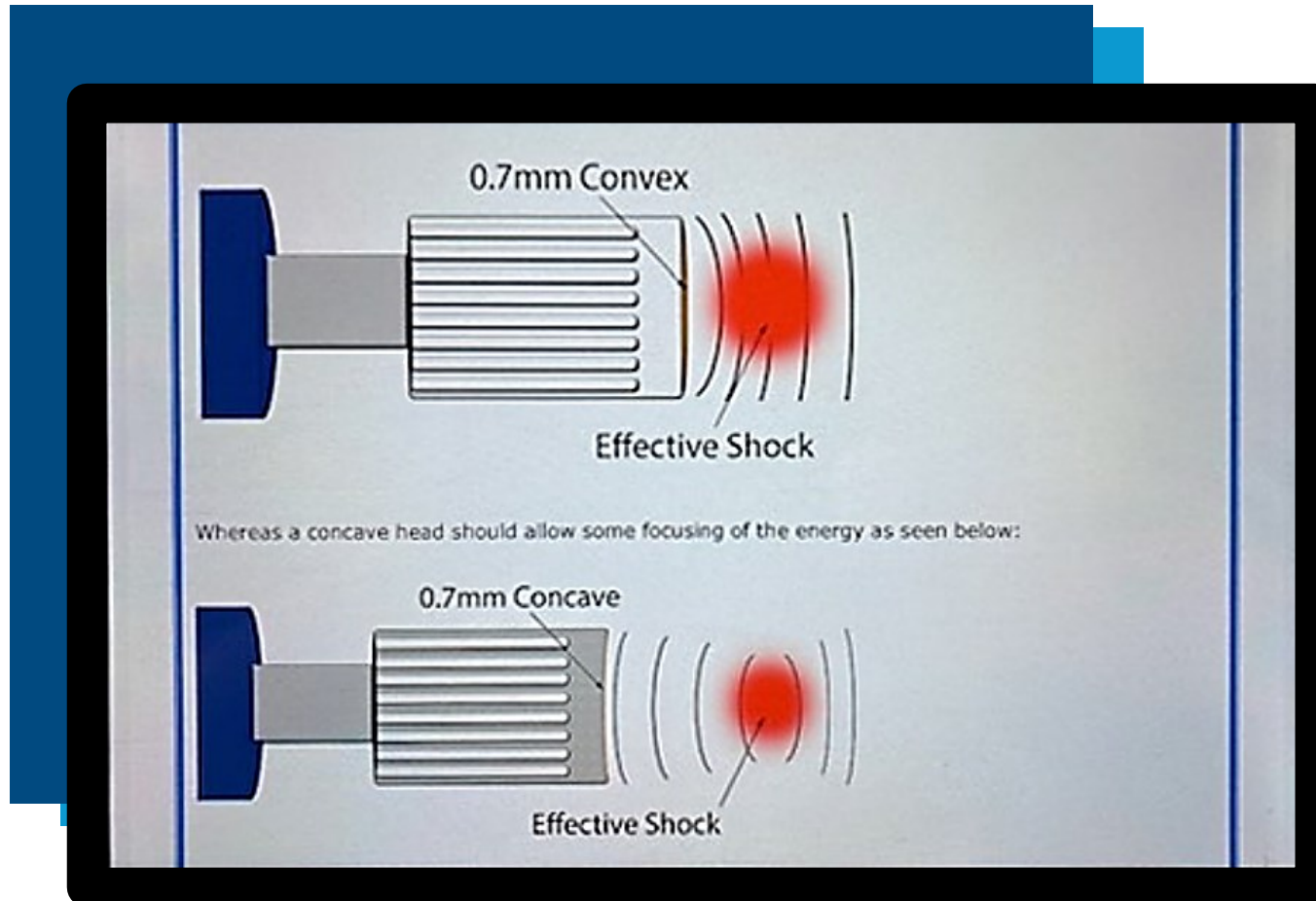
### Broader Effect of ESWT

- Destruction of Tissue
- Increase Healing / Blood Supply (angiogenesis)
- Pain Reduction



# Tablet Features

## Shockwave Education



# Tablet Features

## Treatment Guidance

### ACOUSTIC WAVE THERAPY

ANTI-AGING | REGENERATIVE | ALL-NATURAL HEALING

#### Shockwave Therapy for the Hand: Carpal Tunnel



**Symptoms:** Tingling or numbness. You may notice tingling and numbness in the fingers or hand. Usually the thumb and index, middle or ring fingers are affected. You may experience weakness in the hand and drop objects.

**Cause:** The pain is due to excess pressure in your wrist and on the median nerve. Inflammation can cause swelling. The most common cause of inflammation is an underlying medical condition

that causes swelling in the wrist, and sometimes obstructed blood flow. Some of the most frequent condition are: diabetes, thyroid dysfunction, fluid retention from pregnancy, high blood pressure, autoimmune disorders such as rheumatoid arthritis fractures or trauma to the wrist. Carpal tunnel syndrome can be made worse if the wrist is overextended repeatedly.



**Treatment Solution:** Treatment options for CTS consist of wrist splints, physical modalities, local



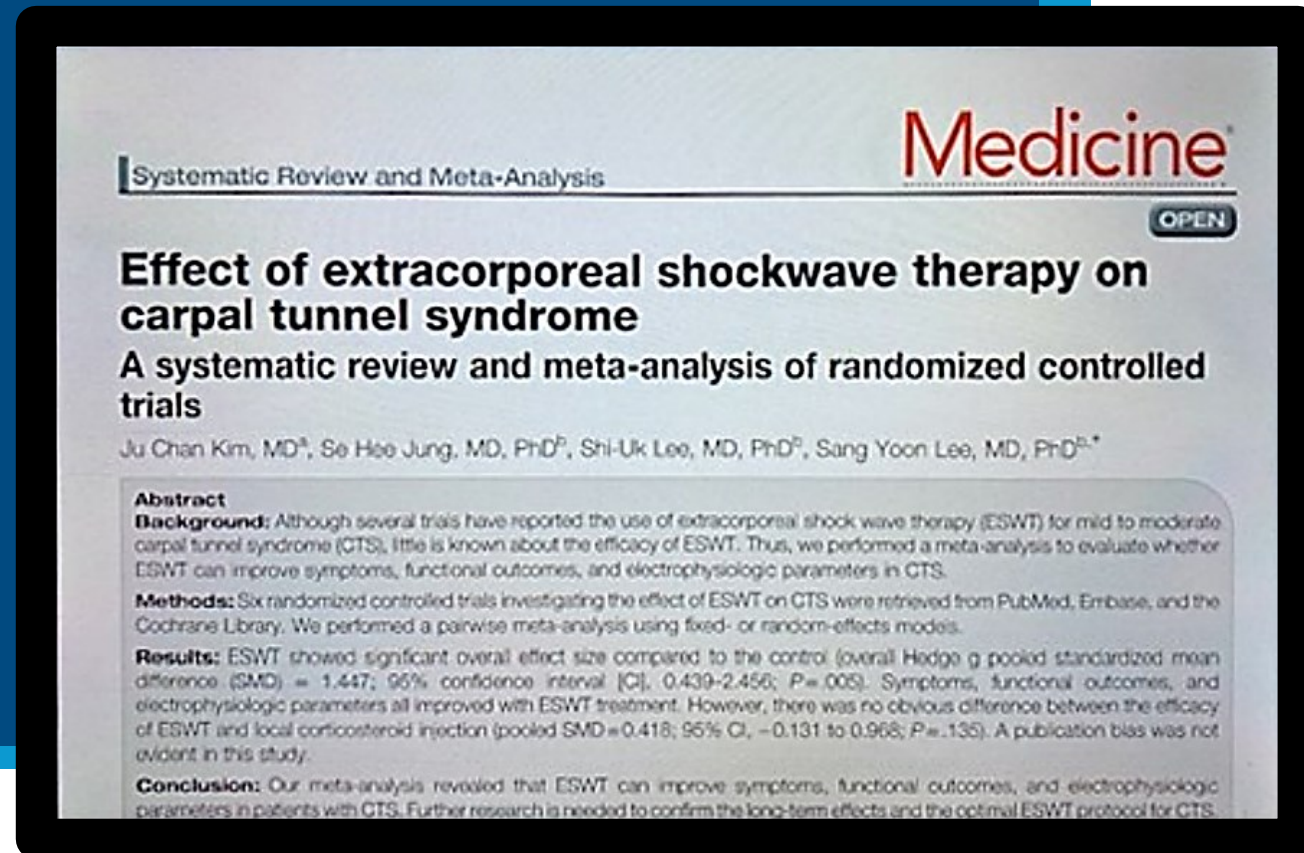
# Tablet Features

## Treatment Tutorial Videos



# Tablet Features

## Shockwave Clinical Trials



The image shows a tablet displaying a medical article abstract. The article is titled "Effect of extracorporeal shockwave therapy on carpal tunnel syndrome" and is a systematic review and meta-analysis of randomized controlled trials. The authors are Ju Chan Kim, MD<sup>a</sup>, Se Hee Jung, MD, PhD<sup>b</sup>, Shi-Uk Lee, MD, PhD<sup>b</sup>, and Sang Yoon Lee, MD, PhD<sup>a,\*</sup>. The abstract includes background, methods, results, and conclusion sections.

**Systematic Review and Meta-Analysis** **Medicine**<sup>®</sup>

**OPEN**

### Effect of extracorporeal shockwave therapy on carpal tunnel syndrome

#### A systematic review and meta-analysis of randomized controlled trials

Ju Chan Kim, MD<sup>a</sup>, Se Hee Jung, MD, PhD<sup>b</sup>, Shi-Uk Lee, MD, PhD<sup>b</sup>, Sang Yoon Lee, MD, PhD<sup>a,\*</sup>

**Abstract**

**Background:** Although several trials have reported the use of extracorporeal shock wave therapy (ESWT) for mild to moderate carpal tunnel syndrome (CTS), little is known about the efficacy of ESWT. Thus, we performed a meta-analysis to evaluate whether ESWT can improve symptoms, functional outcomes, and electrophysiologic parameters in CTS.

**Methods:** Six randomized controlled trials investigating the effect of ESWT on CTS were retrieved from PubMed, Embase, and the Cochrane Library. We performed a pairwise meta-analysis using fixed- or random-effects models.

**Results:** ESWT showed significant overall effect size compared to the control (overall Hedge g pooled standardized mean difference [SMD] = 1.447; 95% confidence interval [CI], 0.439-2.456;  $P = .005$ ). Symptoms, functional outcomes, and electrophysiologic parameters all improved with ESWT treatment. However, there was no obvious difference between the efficacy of ESWT and local corticosteroid injection (pooled SMD = 0.418; 95% CI, -0.131 to 0.968;  $P = .135$ ). A publication bias was not evident in this study.

**Conclusion:** Our meta-analysis revealed that ESWT can improve symptoms, functional outcomes, and electrophysiologic parameters in patients with CTS. Further research is needed to confirm the long-term effects and the optimal ESWT protocol for CTS.

# Tablet Features

## Marketing Materials

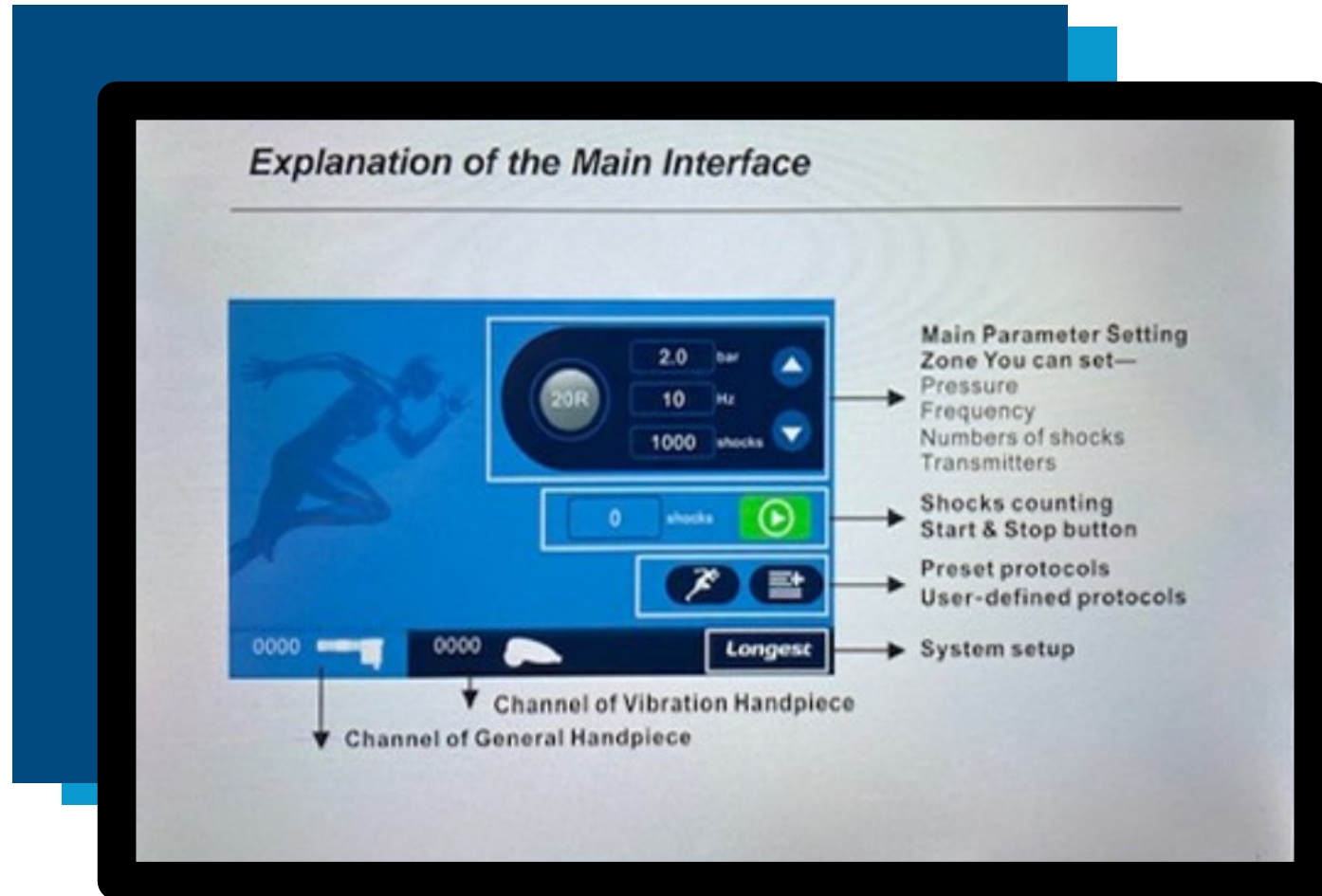
The image shows a tablet displaying a marketing page for Extracorporeal Shock Wave Therapy (ESWT). The page is divided into three columns:

- Getting Back to What You Love!**: Features a photo of a golfer in mid-swing on a green field. Below the photo is the text: "Would you like to get back to the activity you love, but it's just too painful?"
- Help Your Body Heal Itself!**: Features an anatomical diagram of a hand and wrist with callouts for "Tendonitis of the wrist" and "Carpal tunnel syndrome". Below the diagram is the text: "Extracorporeal Shock Wave Therapy (externally applied) physically stimulates the body's cells biologic response and healing mechanisms." and "The specificity of the response to the physical stimulus is cell dependent and leads to several biologic responses including:"
- Fast Easy Treatment!**: Features two photos showing a person receiving ESWT treatment on their arm and hand.

At the bottom of the second column, there is a bullet point: "◆ Reduction of inflammation and, as a result, pain."

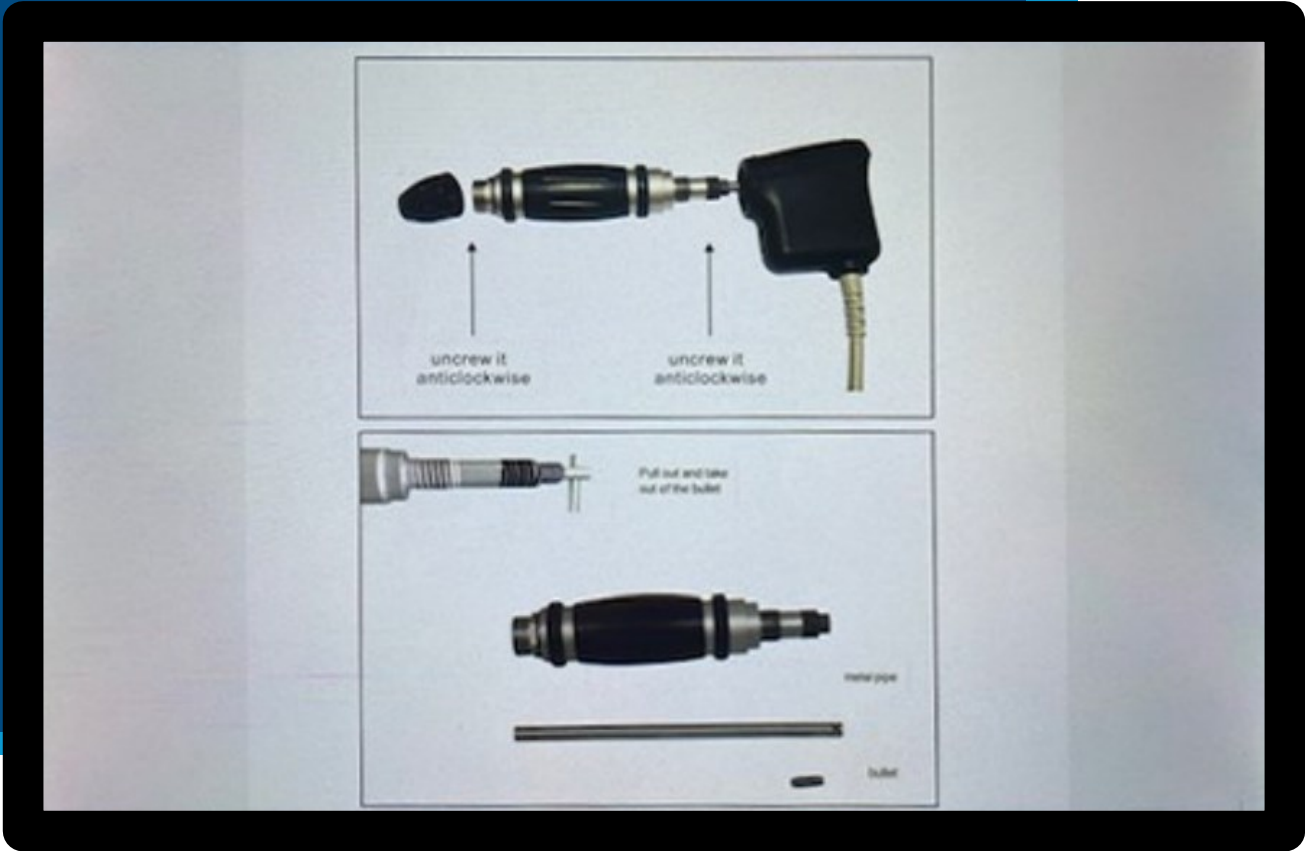
# Tablet Features

## SWT-2500 User Guide



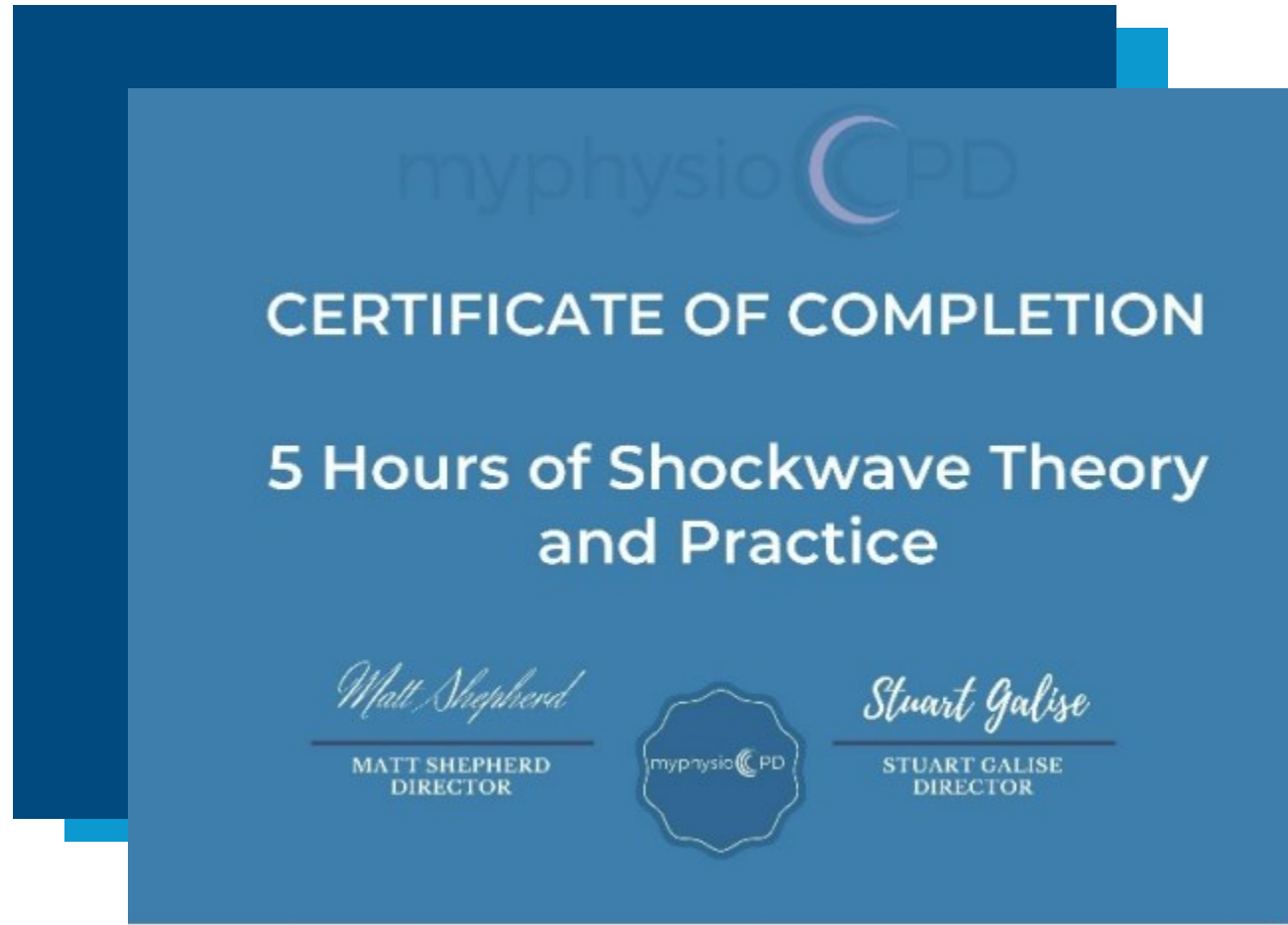
# Tablet Features

## SWT-2500 Maintenance



# Features

## Shockwave Therapy Certificate



# Testimonials

"I purchased the SWT-2500s Shockwave device. During the first week, I generated over \$2,500 in Shockwave treatment packages, and \$7,000 by the second week. My patients love it and are already recommending their friends and family to me for treatments. With just a few more treatment packages the machine will be paid for!"

Dr. Wohar - PA

# Testimonials

---

"I got the SWT-2500s shockwave device, and it is really helping my patients. I had a patient who had carpal tunnel for years. After only one treatment, his pain went away and has not come back. The Machine has delivered over 2-Million shocks with no real problems, and very little maintenance".

Dr. Phil Caylor - CA





Includes:

- SWT-2500 Dual Radial Shockwave
- 3-Tier Work Cart
- 3-Transmitter Heads
- Shockwave Education Tablet
- 50-Patient Tri-fold Brochures
- 3-yr. Warranty
- V-Transmitter

