

# FocusMasterPro

ELECTROMAGNETIC FOCUS SHOCKWAVE THERAPY

---



## Focus Shockwave Therapy



# FocusMasterPro

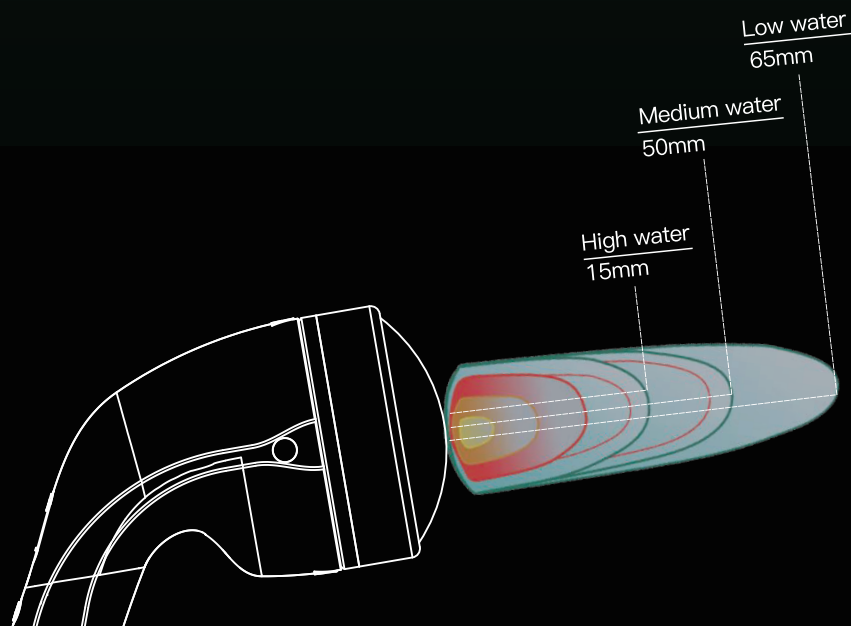
## ELECTROMAGNETIC FOCUS SHOCKWAVE THERAPY

### WHAT IS ELECTROMAGNETIC FOCUS SHOCKWAVE?

Electromagnetic focus shockwave technology is a newer generation technology. It discharges high-voltage electricity to the electric coil to form a powerful pulse electromagnetic field energy. The electromagnetic wave generates a deep shock wave in the water. Its advantage is that the output energy is extremely stable, the focal length is long, and the lifespan of the electromagnetic generator is also long-lasting and stable.

FocusMasterPro - can reach deeper tissue with more depth penetration than radial waves, focusing its output on more localized and deeper regions. The position of the applicator on the skin is minimally affected, limiting damage to the surface skin and underlying soft tissues (safer and more comfortable)

FocusMasterPro treats at defined spots within the body and is further adapted depending on the required depth. This accuracy feature makes Focused Shock Wave Therapy much better for treating deeper issues within the body.

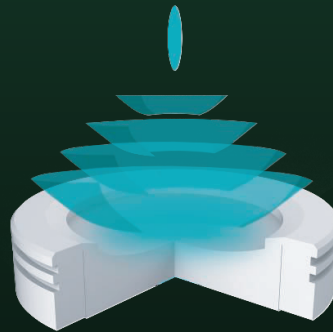


# FocusMasterPro

## ELECTROMAGNETIC FOCUS SHOCKWAVE THERAPY

### FocusMastePro - mechanism

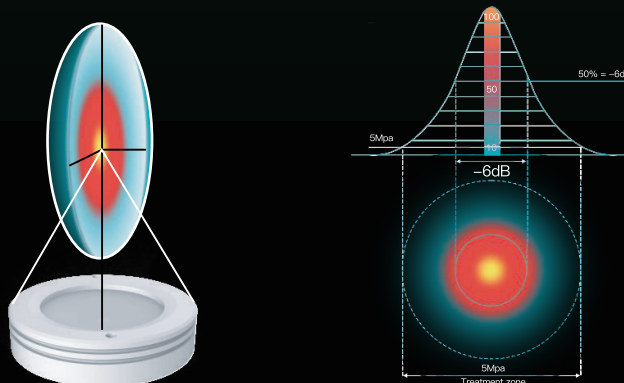
The electromagnetic shockwave is based on the physical principle of electromagnetic Induction. It enables very precise and highly sensitive dosing of the applied shock wave energy. The shock wave source uses a special coil to focus the shock waves. Shock waves are generated in water outside the body and then transmitted to the biological tissue.



Shock wave generation

### FocusMastePro - focal zone

The focal zone is the area of maximum energy intensity. Its size is basically independent of the selected energy level. By contrast, the size of the treatment zone depends on the selected energy level and is nonorally larger than the focal zone



Pressure distribution and focal zone

# FocusMasterPro

## ELECTROMAGNETIC FOCUS SHOCKWAVE THERAPY

### FocusMasterPro - penetration depth

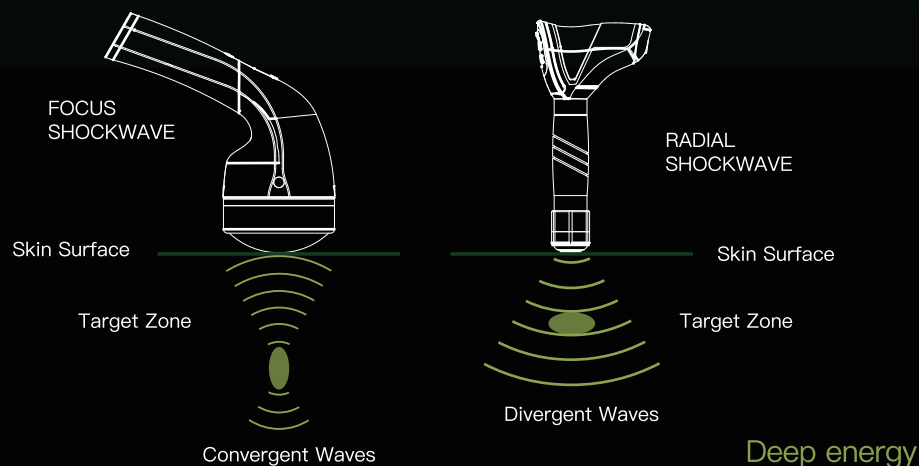
Dynamic penetration depth control. Adjust shock wave penetration depth by touch screen and energy levels by button on applicator. No need for gel pads.



Dynamic control

### FocusMasterPro - comfort treatment

Not only is the effectiveness better with Focused-ESWT, but since it penetrates deep into the tissue this means you don't stimulate the skin sensory network; this leads to a more comfortable session. And due to the comfort levels being better, higher doses can often be used.



# FocusMasterPro

## ELECTROMAGNETIC FOCUS SHOCKWAVE THERAPY

### RSWT VS FSWT



#### RADIAL SHOCKWAVE

##### Wave Action

Divergent Wave

##### Penetration Depth

0–35mm

##### Impulse

Slow

##### Effect

Superficial Mechanical

##### Target

Skin, muscle

##### Number of Treatments

More

##### Application Frequency

Twice a week

##### Treatment Duration

10 minutes

##### Usage Area

Physiotherapy,  
orthopaedics, sport  
medicine, aesthetics

##### More effective in

/



#### FOCUS SHOCKWAVE

##### Wave Action

Convergent Wave

##### Penetration Depth

0–65mm

##### Impulse

Fast

##### Effect

Deep Mechanical

##### Target

Skin, muscle, bones

##### Number of Treatments

Less

##### Application Frequency

Once a week

##### Treatment Duration

5 minutes

##### Usage Area

Physiotherapy, orthopaedics,  
sport medicine, urology,  
dermatology, cardiology,  
veterinary

##### More effective in

Erectile dysfunction,  
wound treatment

# FocusMasterPro

## ELECTROMAGNETIC FOCUS SHOCKWAVE THERAPY

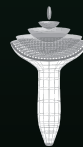
---

### FocusMastePro FEATURES

- Game-changing and affordable focus shockwave
- Wider clinical applications
- Well defined, precise focus perfect for diagnosis and therapy
- Wide range of energy settings with a pulse rate of up to 8 Hz
- 12.1 inch large touch screen
- User-friendly software with treatment protocols and preset parameters
- No gel pad
- Easy-to-operate handle with intensity adjustment buttons



SINGLE HANDLE



NO GEL PAD



PRECISE TREATMENT



CLINIC PROTOCOL



AUTO WATER CIRCULATION



LONG LASTING RESULTS

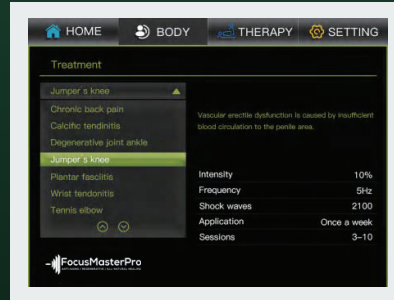
# FocusMasterPro

## ELECTROMAGNETIC FOCUS SHOCKWAVE THERAPY

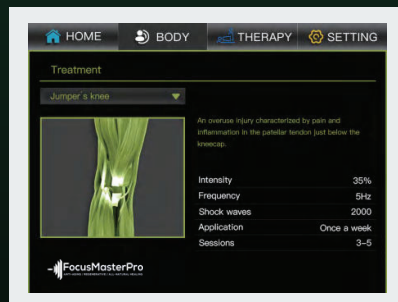
### FocusMastePro INTERFACE



➤ Easy to use



➤ Indications with treatment parameters



➤ Conditions protocol



### TECHNICAL DATA

Model:	FocusMasterPro
Power voltage	≤400W
Penetration depth	0–65mm
Frequency	1–4Hz
Pressure range	5–50MPa
Energy	0.26–0.39 mj/mm <sup>2</sup>
Voltage	100–110V or 220–240V
Applicator	1PCS
Screen size	12.1 inches
Dimensions	73*56.5*105CM
Net weight	55.5kg

# FocusMasterPro

## ELECTROMAGNETIC FOCUS SHOCKWAVE THERAPY

---







Call us: 800-448-5520  
Website: [www.Promeddevices.com](http://www.Promeddevices.com)

# PRO MEDICAL DEVICES

ANTI-AGING | REGENERATIVE | ALL-NATURAL HEALING

