

TECHNOLOGY
APPRENTICESHIP
PROGRAM

Supporting Apprentices:
Advancing and Accelerating Careers



WHY APPRENTICESHIP

IT IS IMPORTANT TO REMEMBER THAT WITHOUT FORMAL JOB EXPERIENCE, ONE MAY NEED ADDITIONAL SUPPORT TO SETTLE INTO THE WORKPLACE AND REACH THEIR POTENTIAL.

This leaves many entry level applicants behind in the application process in an enterprise environment due to the fact there is limited bandwidth and resources for **training** and **upskilling**.

Our **Technology Apprenticeship Program (TAP)** will bridge the gap to accelerate your career into the enterprise ecosystem by providing an opportunity to work with **world-class** organizations.

Through a **shared-responsibility model**, you will embark on a **structured and supported career development** journey and deliver purpose-driven work within a real-world environment.



Structured Career Development

We reinforce and supplement formal education with **market driven concepts** to support growth within an enterprise ecosystem.

Paving the Path Forward

We partner with our clients to pave **exclusive pathways into enterprise organizations** with highly coveted entry-level jobs to create a program for you to assess company culture and leadership within a nurturing environment.

Facilitate Next-Gen Growth

Accelerate the creation of skilled leaders, **promote creativity and unique perspectives** to solve complex industry problems.

Continuous Support

Our support teams **will help you with your career development** until the completion of your program both pre- and post-deployment on an engagement within a defined framework and with support tools.

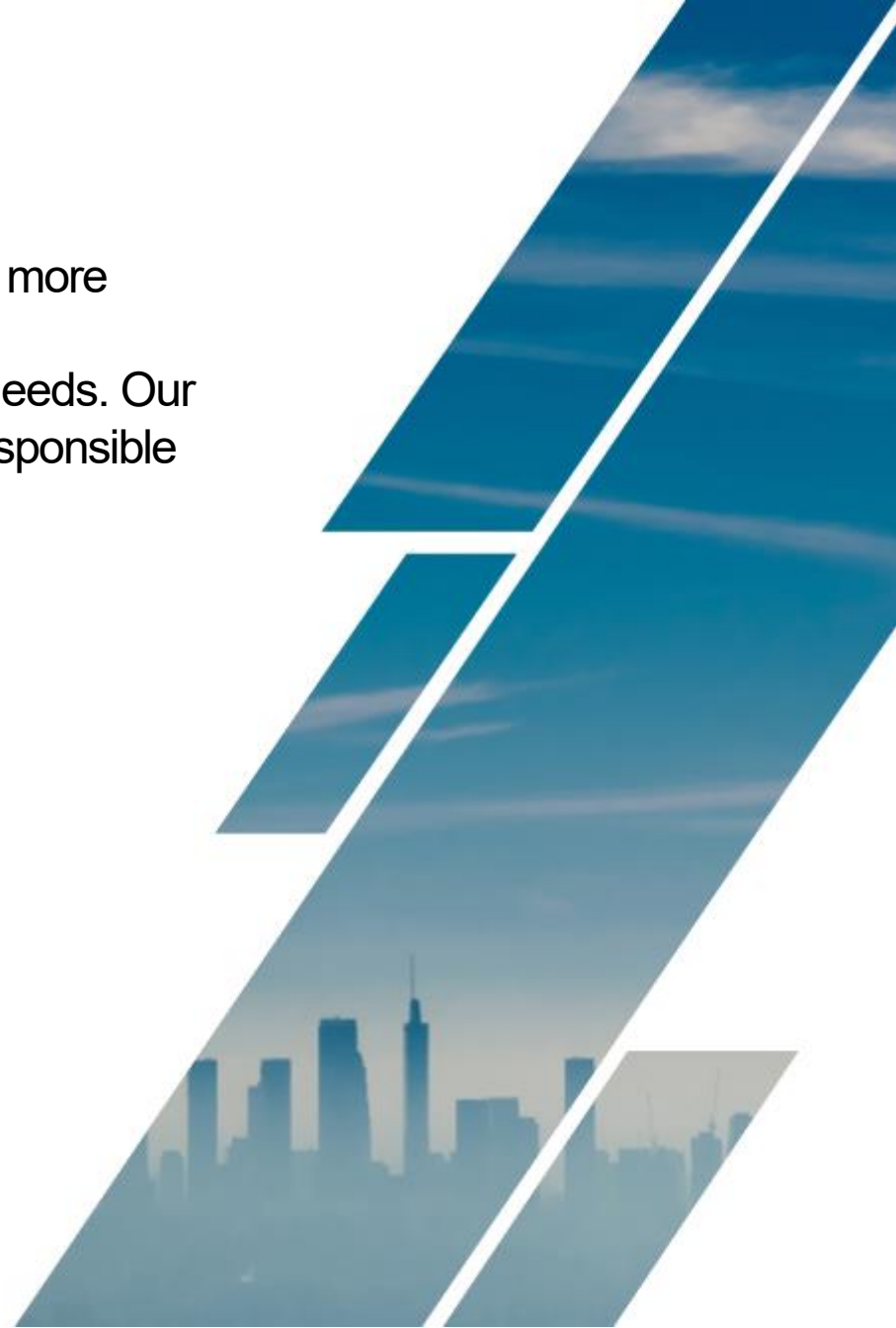


IMMERSIVE MENTORSHIP

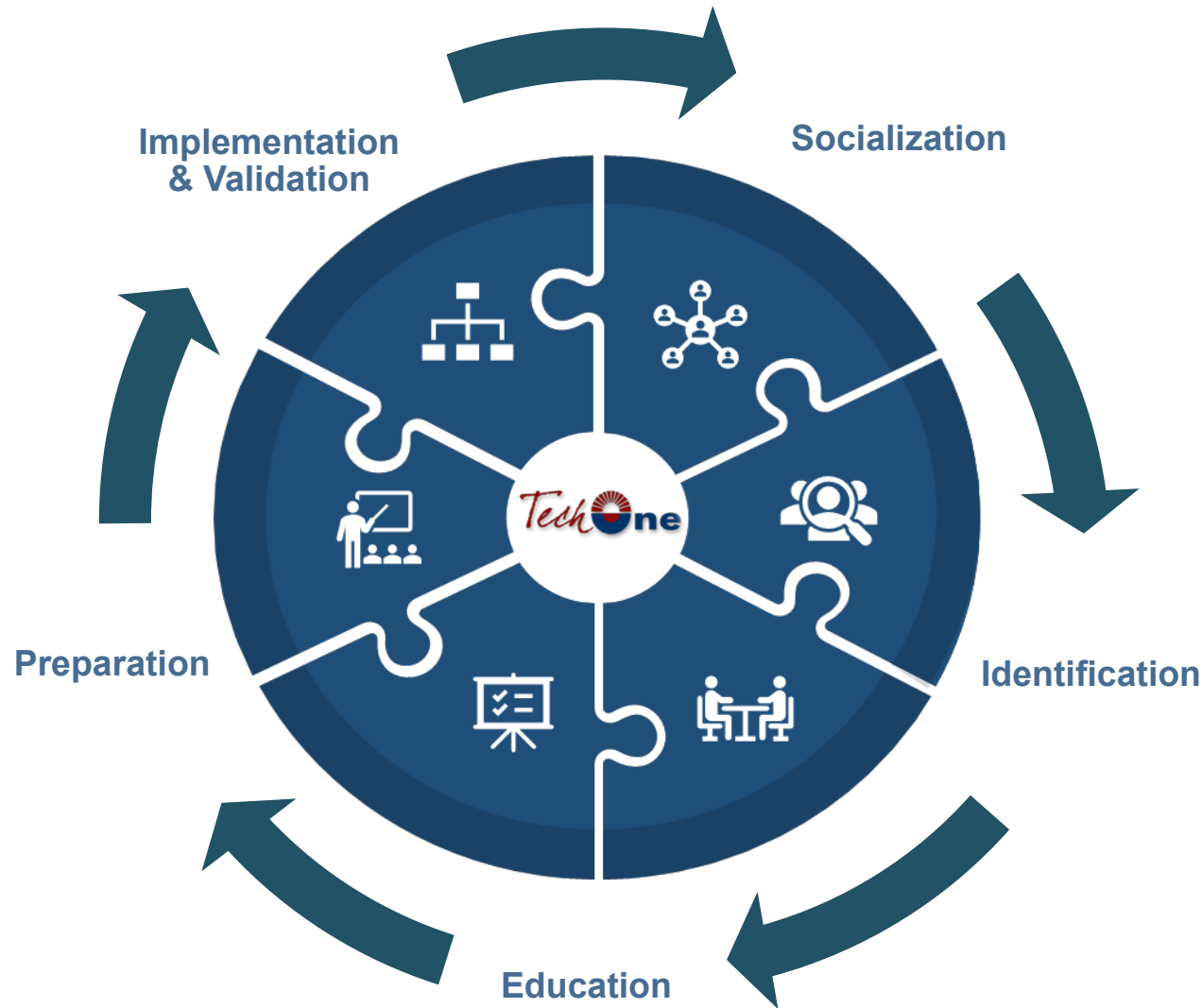
We provide weekly one-on-one check-ins with a mentor. This provides apprentices more opportunities to discuss their progress and to address any challenges they may be experiencing. Additionally, it helps client managers identify any additional support needs. Our mentorship is distinct and tailored to each role. Apprentices are provided a team responsible for personal development and success.

While even senior employees require a comprehensive assimilation, new apprentices may need some additional support to understand their role and the expectations of them in the workplace. In one's induction, we provide guidance and support for an apprentice to understand:

- Alignment of aptitude, attitude and company culture
- Roles, responsibilities, goals and objectives to complete their work effectively
- How their contribution impacts the broad-ranging mission



APPRENTICE JOURNEY



1. Socialization

- Partner & network with regional universities/colleges, alternative programs, & affiliations

2. Identification

- Continuous proprietary sourcing of candidates
- Multi-phase selection process
- Diversity and Inclusion initiative and representation

3. Education

- Tech One TAP Academy: introduce and reinforce capabilities and market driven concepts

4. Preparation

- Deployment planning & alignment with Client
- Selection and onboarding

5. Implementation

- Technical & workforce delivery
- Supplemental support & progress tracking

6. Validation

- Apprentice assessment & workforce transfer

ADDITIONAL RESOURCES AND ACCREDITATIONS

<https://des.az.gov/featured-story/arizona-it-apprenticeship-program-troubleshooting-employer-participation>

<https://techoneit.com/technology-apprenticeship-program/>

<https://www.linkedin.com/company/tech-one/>

<https://app.joinhandshake.com/employers/161781>

Contact Us Today!

Ian Speer | Talent Ambassador

✉ ian@techoneit.com

Jason Jaquez | Talent Ambassador

✉ Jason@techoneit.com

Paul Cozza | Executive Vice President

✉ PCozza@techoneit.com

 **(480) 449-3339**

Tech One IT | 1705 W University Dr. Suite #107 | Tempe, AZ 85281

www.techoneit.com 