



clearpath
marketing

clearpathmg.com
(206) 487-3010
info@clearpathmg.com

BACK TO
BUSINESS

Signage • Hand Sanitizer • Face Masks
+ more essential promotional products



BACK TO BUSINESS

The coronavirus pandemic forced businesses to close their offices, stores and most in-person operations, but as locations either have reopened or prepare to reopen their doors across the country, companies must gear up for a new normal that includes the use of face masks, educational signage and lots of hand sanitizer to stop the spread of COVID-19.

Finding the right products are key. Whether it's to keep employees and customers safe, or to share appreciation during these challenging times, this catalog will guide your search through the top promotional products for safely getting back to business.





TABLE OF CONTENTS

6 Protective Gear

Reusable Face Masks	7
Disposable Face Masks	11
Face Mask Ear Protectors	13
Gloves	13

14 Wellness

Thermometers	15
Hand Sanitizers	15
Back to Work Kit	19

20 Signage

Seat Sign	21
Floor Graphics	21
Decals	22
Flags	23
Barriers	23

24 Promo Essentials

Bags/Coolers	25
Umbrellas	25
Drinkware	26
Office	28
Tech	29
Magnets	29
Key Chains	31
Luggage Tags	31

32 Apparel

Caps	33
Tees	34
Hoodies	35
Price Index	36

Protective Gear



ANTIMICROBIAL NON-MEDICAL FACE MASK

- 4.3 oz. three-ply 100% ring spun cotton mask
- Machine washable up to 15 times
- Size: One size fits most
- Black, White

1
\$1.45 (blank)

Sold in packs of five



A

COTTON REUSABLE MASK

- Four-layer 100% cotton mask
- Non-medical use
- 95/5 cotton/spandex binding & ear loops
- Imprint Areas: Middle Center (default): 3.5" W x 2.25" H; Bottom Center: 3" W x 0.5" H; Side: 1.5" W x 1.5" H
- Charcoal, Lime Green, White & eight other colors available

100	250	500	1000
\$6.98	\$6.07	\$5.28	\$4.59



B

ADULT 100% COTTON TWO-PLY FACE MASK

- 100% combed ring spun cotton mask
- Single-needle rib binding & ear loops
- Non-medical use
- Size: Adult one size fits most
- Dimensions: 6.75" W x 4.625" H
- Imprint Areas: 3.5" W x 5.25" H; 2.5" W x 5" H (estimated)
- Black/Black, White/Black, White/White

1
\$1.89



C

SOLID 100% COTTON POPLIN REUSABLE THREE-PLY MASK

- 100% cotton poplin pleated mask with elastic ear loops
- Machine washable
- Non-medical grade
- Dimensions: 7" W x 3.75" H
- Imprint Area: 4" W x 1.25" H
- Black, Cream, Red

1000	5000	10000	20000
\$6.67	\$6.11	\$5.84	\$5.42



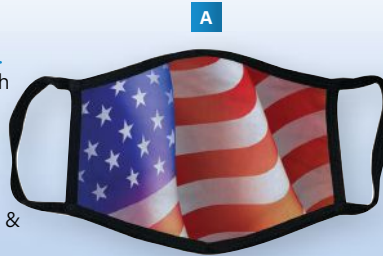
D

Protective Gear

DYE-SUBLIMATED THREE-LAYER MASK

- Two-layer 95/5 cotton/spandex with outer 93/7 polyester/spandex layer
- Dimensions: 7" W x 5" H
- Imprint Area: 7" W x 5" H
- Black
- Camo, Digital Camo, Flag, Rainbow & Tie-Dye stock patterns available

100	250	500
\$5.62	\$4.89	\$4.25



PATTERNED 100% COTTON POPLIN REUSABLE THREE-PLY MASK

- 100% cotton poplin pleated mask with elastic ear loops
- Machine washable
- Non-medical grade
- Dimensions: 7" W x 3.75" H
- Blue/White Dot, White/Blue Vertical Stripe, White/Yellow Horizontal Stripe & three other patterns available

24
\$10.25 (blank)

Sold in packs of two



RABBIT SKINS KIDS' 100% COTTON TWO-PLY FACE MASK

- 100% combed ring spun cotton mask
- Single needle rib binding & ear loops
- Non-medical use
- Size: Kids' one size fits most
- Dimensions: 6" W x 3.75" H
- Imprint Areas: 2.625" x 4.5"; 1.625" x 4" (estimated)
- Black/Black, White/Black, White/White

1
\$1.69



ECO YOUTH FACE MASK

- Two-ply eco performance 40% recycled poly, 30% recycled cotton, 30% cotton mask
- Made from about 500 mL recycled poly (RPET) water bottle
- Washable & breathable
- Size: One size fits most
- Black, Dark Heather Gray, Heather Red, Midnight Navy & three other colors

Call for Pricing



CDC Recommendation

Cloth face coverings should be worn in public settings where social distancing measures are difficult to maintain, such as grocery stores, pharmacies and gas stations.

TWO-PLY REUSABLE FACE MASK

- 4.2 oz. 52/48 Airlume combed ringspun cotton/polyester mask
- Shirring on nose & chin
- Fabric ear straps
- Sizes: S/M, M/L
- Black

Call for Pricing



TODDY ICE COOLING ACTIVE BAND

- Moisture wicking RapidCool Polymer band/neck gaiter
- Fully customizable
- More than a dozen ways to wear
- Dimensions: 10.5" W x 13" H
- Imprint Area: 22" W x 15.5" H

100	250	500	1000
\$9.07	\$8.16	\$7.35	\$6.61



ECO ADULT FACE MASK

- Two-ply eco performance 40% recycled poly, 30% recycled cotton, 30% cotton mask
- Washable & breathable
- Size: Adult one size fits most
- Imprint Area: 4.5" W x 7" H
- Black, Dark Heather Gray, Heather Black, Heather Red, Heavy Metal, Midnight Navy, White

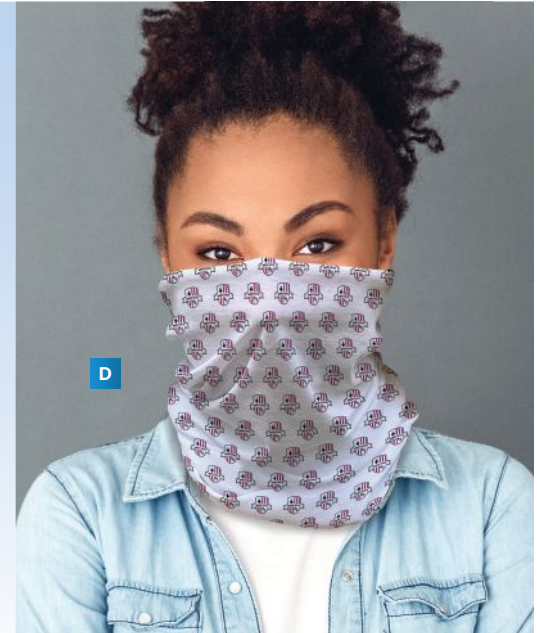
Call for Pricing



MULTIFUNCTIONAL WRAP

- 100% polyester tube wrap
- Fully customizable
- Can be worn on head or neck
- Dimensions: 19" W x 10" H
- Imprint Area: 19" W x 10" H

75	100	250	500
\$11.81	\$10.27	\$8.93	\$7.76



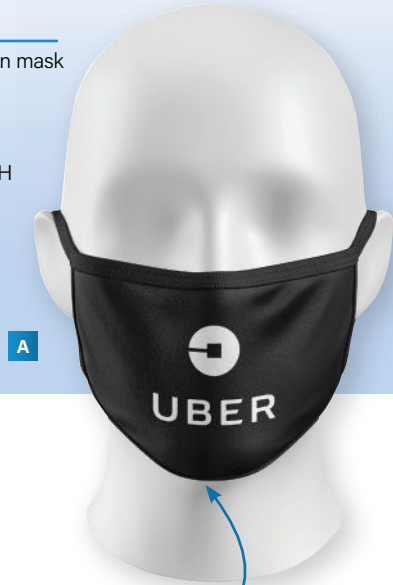
Protective Gear

BROOKLYN MASK

- Three-ply 95/5 polyester/cotton mask
- Washable & reusable
- U.S. made
- Size: Adult one size fits most
- Dimensions: 7.25" W x 4.9375" H
- Imprint Area: 4.75" W x 2.5" H
- Black

150

\$6.25



IMPRINTED FACE COVER WITH ELASTIC HEAD LOOP

- Polyester knit outer layer with fine cotton lining
- Dimensions: 8.75" W x 5.5" H
- Imprint Area: 8.5" W x 5" H

2500	5000	10000	25000
\$7.25	\$7.08	\$6.83	\$6.67



Case Study

Brooklyn Mask

Need: A grocery store needed several in-store giveaways for awareness month.

Result: These masks were given to customers upon entering the store to promote safety, awareness and social distancing. The masks brought customers to the store, and the customers put them on immediately. This increased the awareness and the store's dedication to the cause.

WASHABLE & REUSABLE MICROFIBER FACE MASK

- 210 GSM microfiber mask
- U.S. made
- Dimensions: 7.5" W x 4.25" H
- Imprint Area: 8.5" W x 8.5" H

250	500	1000	2500
\$5.00	\$4.50	\$4.00	\$3.50



THREE-LAYER REUSABLE CUSTOM FACE MASK



- Two-layer 100% polyester mask with nonwoven liner
- Adjustable nose bridge
- Reusable & washable
- Size: Adult
- Imprint Area: 3" W x 3" H
- White

12	25	50	100
\$9.99	\$9.49	\$9.29	\$9.19

LIGHTWEIGHT 100% AIRLUME COTTON FACE COVER

- 4.2 oz. 100% Airlume combed ring spun cotton mask
- Contoured design with raw edges & ear holes
- Disposable
- Size: One size fits all
- Black, Mauve, Navy, Storm, Tan

Call for Pricing



Disposable Fabric Cover

The single-ply, no-sew design means these masks are produced with zero human touch! They are intended to be worn for the day and disposed of.

DISPOSABLE THREE-PLY MASK

- Non-medical pleated mask
- Ear loops & adjustable nose clip
- Size: Adult
- Blue

100	250	500	1000
\$0.99	\$0.95	\$0.89	\$0.85 (blank)

A



B

DISPOSABLE THREE-PLY MASK

- 25 GSM filter layer mask
- Non-medical use

500	1000	2500	5000
\$1.61	\$1.40	\$1.22	\$1.06 (blank)

C



KN95 MASK

- Non-medical use mask
- Metal nose strip
- White

100	250	500	1000
\$7.30	\$6.35	\$5.52	\$4.80 (blank)

MASK EXTENDER EAR PROTECTION

- Silicone hook for face mask elastic bands to protect ears
- Flexible TPR material with notches allows adjustments for best fit
- Dimensions: 7.5" H
- Imprint Area: 2.5" W x 0.25" H
- Black, Blue, Lime Green, Orange, Purple, Red, White



A

250	500	1000	2500
\$1.04	\$0.90	\$0.78	\$0.68

FULL-COLOR FACE MASK STRAP HOOK & EARSAVER

- Gives ears break from prolonged elastic band wear
- Fully customizable
- Dimensions: 3" W x 0.25" H x 0.8" D
- Imprint Area: 3.04" W x 1.01" H

B



250
\$115

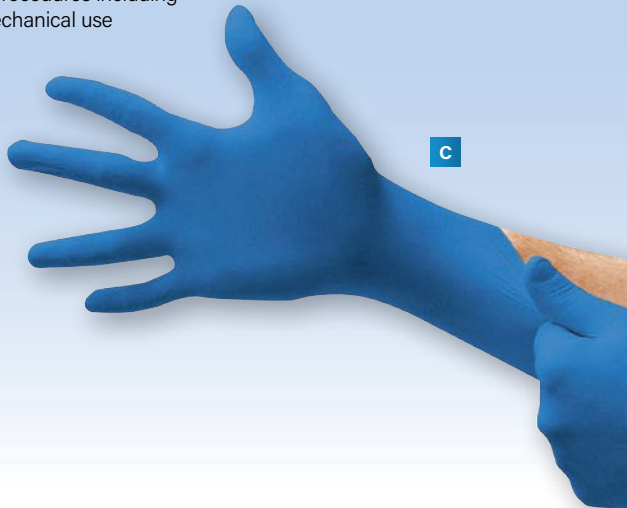
LATEX-FREE NITRILE GLOVE

- Strong, high-quality nitrile glove
- Medical grade designed for multipurpose procedures including chemical & mechanical use
- Sizes: S-XL
- Blue

10000

\$0.23 (blank)

Sold as singles



C

DISPOSABLE VINYL GLOVE

- Non-medical use glove
- Sizes: M-L
- Translucent White

100	200	500	1000
\$0.44	\$0.38	\$0.33	\$0.29 (blank)

Sold as singles

D



Wellness





CUSTOM HAND SANITIZER STAND

- Touchless hand sanitizer dispenser
- Holds 40 oz. antibacterial sanitizer gel (not included)
- Powered by four C batteries (not included)
- Dimensions: 59" H
- Imprint Area: 5.5" W x 7" H
- Light Gray/Black

6
\$216.00

REUSABLE FOREHEAD THERMOMETER

- Liquid crystal thermometer quickly displays core temperature
- Use indoors at room temperature
- Dimensions: 1.23" W x 2.7" H
- Imprint Area: Case Front: 1.125" W x 3.125" H; Case Back: 1.125" W x 2.5" H
- White

1008	2464	3696	5040
\$2.13	\$1.85	\$1.61	\$1.40



CDC Recommendation

Consider conducting daily employee health checks (e.g., temperature and symptom screening).



TOUCH-FREE INFRARED THERMOMETER

- Non-contact thermometer scans forehead
- Measures in Fahrenheit & Celsius
- Powered by two AAA batteries (not included)
- White/Blue

12	25	50	100
\$125.00	\$119.00	\$115.50	\$114.50 (blank)

8 OZ. TOP PUMP HAND SANITIZER

- Contains 70% alcohol
- Quickly kills germs, fungi & viruses
- FDA approved
- Clear

12	25	50	100
\$9.99	\$9.69	\$9.49	\$9.29 (blank)



8 OZ. HAND SANITIZER PUMP BOTTLE

- Contains 62% ethyl alcohol content
- Unscented antibacterial gel
- FDA approved
- Dimensions: 6" H
- Imprint Area: 1.5" W x 2.375" H
- Clear

48	96	144	288
\$10.48	\$9.11	\$7.92	\$6.89



10 OZ. HAND SANITIZER GEL

- Contains 62% alcohol
- Citrus-scented antibacterial hand sanitizer gel with pump dispenser
- Exceeds FDA standards
- Dimensions: 2" W x 6" H
- Imprint Area: 1.375" W x 2.5" H
- Clear

50	100	250	500
\$8.25	\$7.54	\$7.02	\$6.60



16 OZ. HAND SANITIZER PUMP BOTTLE

- Contains 62% ethyl alcohol content
- Unscented antibacterial gel
- FDA approved
- Dimensions: 7.5" H
- Imprint Area: 2" W x 2.625" H
- Clear

36	72	144	288
\$13.63	\$11.85	\$10.30	\$8.96



CDC Recommendation

If soap and water are not readily available, use a hand sanitizer that contains at least 60% alcohol.

Case Study

2 oz. Antibacterial Hand Sanitizer

Need: A restaurant wanted a U.S.-made product to promote its brand.

Result: The restaurant opted for an order of 5,000 hand sanitizers with full-color labels to hand out to dine-in patrons as well as those picking up takeout orders. The restaurant indicated this was the most successful client promotion it had done in the past five years, so it placed a second order for more sanitizers and added a coupon code for 10% off the next order.

A



2 OZ. ANTIBACTERIAL HAND SANITIZER

- Citrus-scented antibacterial gel
- Dimensions: 3.5" H x 1.5" Dia.
- Imprint Area: 4.75" H x 2.364" W
- Clear

150	250	500	1000
\$2.70	\$2.60	\$2.58	\$2.55

2 OZ. HAND SANITIZER

- 62% ethyl alcohol content
- Lightly scented antibacterial gel
- Meets FDA requirements
- Dimensions: 3.5" H
- Imprint Area: 0.9375" W x 1.4375" H
- Clear

100	250	500	1000
\$3.68	\$3.20	\$2.78	\$2.42

B



1 OZ. HAND SANITIZER

- 62% ethyl alcohol content
- Lightly scented antibacterial gel
- Meets FDA requirements
- Dimensions: 1.375" W x 3" H
- Imprint Areas: 0.59375" W x 1.28125" H; 1.375" W x 0.625" H
- Clear

100	250	500	1000
\$2.01	\$1.75	\$1.52	\$1.32

C



0.5 FL. OZ. INSTANT HAND SANITIZER GEL PACK

- Contains 62% ethyl alcohol to kill 99.9% of widespread germs
- Moisturizing aloe leaves skin soft, healthy & with no sticky residue
- U.S. made
- Dimensions: 2.364" W x 4.75" H
- Imprint Area: 4.76" W x 4.73" H

2500	25000	50000
\$0.99	\$0.97	\$0.95

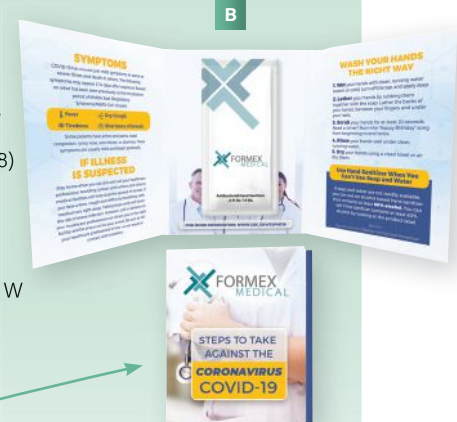


A

TEK BOOKLET 2 WITH 0.5 FL. OZ. INSTANT HAND SANITIZER GEL PACK

- Fully customizable double-fold booklet with sanitizer gel pack (A18)
- Dimensions: Booklet: 4.04" W x 5.231" H per panel; Gel Pack: 2.364" W x 4.75" H
- Imprint Areas: Booklet: 4.04" W x 5.231" H per panel; Gel Pack: 4.76" W x 4.73" H

2500	25000	50000
\$2.44	\$2.42	\$2.40



B

Case Study

Tek Booklet 2 with 0.5 fl. oz. Instant Hand Sanitizer Gel Pack

Need: A major insurance company wanted a product that could remind people how to stay safe during the coronavirus pandemic.

Result: The company sent this product in a mass mailer with a message about preparation for and steps to take against COVID-19. The campaign was so successful that the insurance company is making almost monthly repeat orders of 5,000 pieces to keep the promotion going.

1.7 OZ. HAND SANITIZER SPRAY BOTTLE

- Contains 80% ethyl alcohol content
- U.S.-made
- Unscented
- Meets FDA Requirements
- Dimensions: 4" H
- Imprint Area: 1.5" W x 1" H
- Clear

100	250	500	1000
\$3.68	\$3.20	\$2.78	\$2.42



C

Case Study

Essential Back to Work Kit

Need: A manufacturing facility needed back-to-work giveaways for 33,000 employees.

Result: The company gave a kit to each employee upon returning to work to promote awareness of staying safe and avoiding close contact. It was well-received, and each time employees use their masks and hand sanitizers, they are reminded of these important procedures.

A



ANTIBACTERIAL WET WIPE PACKET

- Contains benzalkonium chloride & light citrus scent (not an alcohol sanitizer)
- Packet includes 10 wipes
- Meets FDA requirements
- Dimensions: 6" W x 2.75" H
- Imprint Area: 2.5" W x 1.5" H
- White

250	500	1000	2500
\$2.36	\$2.05	\$1.78	\$1.55

HAND SOAP SHEETS IN COMPACT TRAVEL CASE

- Add water to dissolve a sheet
- 30 sheets per case
- Travel size
- Meets FDA requirements
- Dimensions: 1.75" W x 2.75" H x 0.5" D
- Imprint Areas: 0.875" W x 0.40625" H; 1" W x 0.5" H
- Clear, Translucent Blue



B

250	500	1000	2500
\$2.20	\$1.91	\$1.66	\$1.44

ESSENTIAL BACK TO WORK KIT

- Includes Brooklyn Mask (A10), 1 oz. antibacterial hand sanitizer & EVA bag
- Dimensions: Mask: 7.25" W x 4.9375" H; Hand Sanitizer: 3.5" H x 1" Dia.; Bag: 6.5" W x 4.5" H x 1.625" D
- Size: Mask: One size fits most adults
- Imprint Areas: Mask: 6.25" W x 3.9375" H; Hand Sanitizer: 3.16" W x 1.65" H; Bag: 3.5" W x 1.85" H
- Mask: Black; Hand Sanitizer & Bag: Clear

150	250	500	1000
\$10.25	\$10.05	\$10.00	\$9.95

C



Come in, we're
RE-OPENING
kindly please keep
SOCIAL-DISTANCING

Signage



RECTANGLE STAY SAFE FLOOR DECAL

- 6' apart stock design social distance vinyl floor decal
- Durable, non-slip laminate
- Dimensions: 15" W x 3.75" H
- Peacock Blue

12	25	50	125
\$8.60	\$5.60	\$4.40	\$2.67

CIRCLE STAY SAFE FLOOR DECAL

- 6' apart stock design social distance vinyl floor decal
- Durable, non-slip laminate
- Dimensions: 12" Dia.
- Fire Red

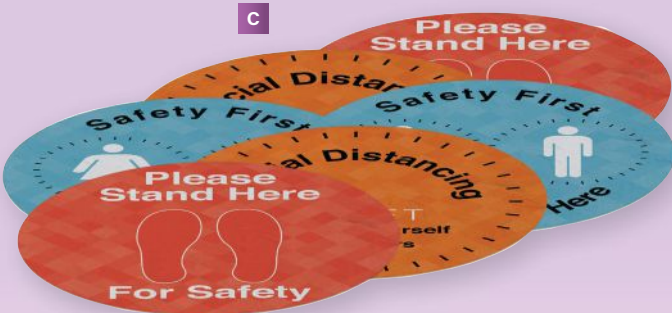
6	12	25	50
\$13.50	\$10.60	\$7.30	\$6.46



STOCK DESIGN SEAT SIGN

- White polyethylene sign
- Slips over chair back to promote social distancing
- Dimensions: 26" W x 16" H

25	50	125	250
\$3.60	\$2.60	\$1.80	\$1.46



12" INDOOR SURFACE GRIP CIRCLES

- Set of 6 textured-matte vinyl decals that work on a variety of surfaces
- Dimensions: 12" Dia.
- Imprint Area: 12" Dia.

1	2	6	12
\$80.00	\$77.60	\$75.20	\$72.80

CDC Recommendation

Use visual cues placed 6 feet apart to indicate where to stand or sit when physical barriers are not possible.

Signage

SQUARE STAY SAFE FLOOR DECAL

- 6' apart stock design social distance vinyl floor decal
- Durable, non-slip laminate
- Dimensions: 14" W x 12" H
- Peacock Blue

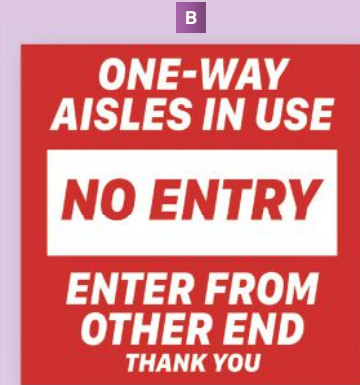
6	12	25	50
\$13.50	\$10.60	\$7.30	\$6.46



CUSTOM FLOOR DECAL

- Custom size vinyl floor decals
- Durable, non-slip laminate
- Dimensions: 144" W x 144" H to 175" W x 175" H
- Imprint Area: 144" W x 144" H to 175" W x 175" H

12	25	50	125
\$50.75	\$27.56	\$17.50	\$9.59



STOP THE SPREAD FLOOR GRAPHIC

- Floor graphic to promote social distancing
- Removable & repositionable
- Dimensions: 12" W x 6" H
- Red

25
\$5.00

Sold in packs of 25



STOP DID YOU WASH YOUR HANDS? GRAPHIC

- Octagon hand-washing reminder
- White vinyl label with shiny lamination
- Removable & repositionable
- Dimensions: 8" W x 8" H
- Red

10	25
\$2.30	\$1.32

Sold in packs of 10 & 25

CDC Recommendation

Post signs on how to stop the spread of COVID-19, properly wash hands, promote everyday protective measures and properly wear a face covering. Locations might include workplace entrances, meeting rooms, check-in areas, bathrooms, break rooms, locker rooms and waiting areas. Include signs for non-English speakers, as needed.

CDC Recommendation

Install transparent shields or other physical barriers where possible to separate employees and visitors where social distancing is not an option.

A



13' STREAMLINE BLADE SAIL SIGN KIT

- Single-sided blade-shape flag with steel scissor base & carrying case
- Welcome back employees or let customers know a business is open
- Dimensions: 43.5" W x 153" H x 23" D
- Imprint Area: 32" W x 125.625" H

1	2	6	12
\$316.00	\$307.00	\$291.00	\$281.00

Signage

PROTECTIVE COUNTER BARRIER

- Protective barrier reduces the amount of physical contact between employees & customers
- Includes clear window, removable feet & fasteners
- Dimensions: 24" W x 32" H
- Imprint Area: 17" W x 1.75" H

1	2	6	12
\$115.00	\$111.00	\$106.00	\$102.00

B



C



VINYL WALL BARRIER

- Easy-to-clean 13 oz. vinyl divider with lightweight aluminum frame
- Safely transform existing open spaces to comply with social distancing guidelines
- Dimensions: 60" W x 72" H
- Imprint Area: 60" W x 72" H

1	2	6	12
\$385.00	\$374.00	\$362.00	\$351.00

Promo Essentials



**GLENWOOD
NONWOVEN TOTE BAG**

- Two-tone bag with gray straps
- Front pocket & 7" gusset
- Includes ColorJet digital full-color inkjet imprint
- Dimensions: 18.9" W x 15.16" H
- Imprint Area: 5" W x 5.9" H
- Blue, Green, Purple, Red

150	500	1000	2500
\$3.29	\$3.19	\$3.09	\$2.99



A

**SPARTAN LUNCH
COOLER**

- Full-sized 600D poly lunch cooler
- Contrast piping & full-zip clamshell opening
- 12-can capacity
- Dimensions: 8.5" W x 10" H x 6.5" D
- Imprint Area: 4.5" W x 4" H
- Black, Orange, Red, Royal

50	100	250	500
\$9.08	\$8.92	\$8.75	\$8.58



B

C

**TOPAZ IMPORT
DYE-SUBLIMATED
TECHNICAL BACKPACK**

- Includes padded tablet & laptop sleeves (fits most 15" laptops)
- Deluxe organization panel with detachable keyring
- Adjustable, ergonomic shoulder straps
- Fully customizable
- TSA-compliant
- Dimensions: 11.5" W x 19.5" H x 7.5" D

1	10	25	50
\$123.00	\$67.15	\$64.37	\$61.57



MONSOON UMBRELLA

- Plus-sized 190T nylon canopy with vented panels
- Pistol grip rubber handle & matching sleeve with shoulder strap
- Manual open
- Dimensions: Arc: 62" Dia; Closed: 38.5" H
- Imprint Areas: Panel: 8" W x 6" H; Sleeve: 10" W x 1" H
- Black, Gray/Black, Hunter/White, Orange/White, Red/White, Royal/White

36
\$16.65



D

17 OZ. SLIM STAINLESS BOTTLE

- Keeps hot drinks hot for eight hours & cold drinks cold for up to 24 hours
- Reduces condensation
- Dimensions: 2.7" W (base) x 9.1" H
- Imprint Area: 8.4" W x 7.7" H
- Stainless Steel

25	300	1000
\$22.30	\$21.47	\$20.63



A

IBIZA 17 OZ. DOUBLE-WALL STAINLESS BOTTLE

- Double-wall insulated stainless steel bottle with wide spout
- Keeps drinks hot for 12 hours & cold for 24 hours
- Includes ColorJet full-color inkjet imprint with gloss UV clearcoat
- Dimensions: 2.8" W x 10.16" H
- Imprint Area: 8.807" W x 4" H
- Black, Chrome, White

48	96	288	576
\$11.99	\$11.49	\$10.99	\$10.49



B

SASA BOTTLE

- 22 oz. double-wall stainless steel thermal bottle with copper vacuum insulation
- Threaded stainless steel lid with bamboo accent
- Hand-wash recommended.
- Dimensions: 2.6875" W (base) x 10.25" H
- Imprint Areas: 2.5" W x 4" H or 2.5" W x 6.81" H per side; 8" W x 4" H or 9.11" W x 6.81" H wrap
- Black, Gray, Green, Navy, Red, White

36	72	144
\$14.95	\$13.95	\$12.95



C

Sales Tip

Sasa Bottle

Give thanks while keeping the front line hydrated with first responder stock art to reinforce appreciation.

24 OZ. WATER BOTTLE

- Double-wall insulated water bottle
- Keeps hot drinks hot & cold drinks cold
- Reduces condensation
- Dimensions: 3.3" W x 10.4" H
- Imprint Areas: 2" W x 3" H; 9.9" W x 7.9" H wrap
- Clear

50	300	1000
\$21.63	\$19.97	\$17.47



D

16 OZ. TUMBLER

A

- Double-wall insulated tumbler
- Keeps hot drinks hot & cold drinks cold
- Dimensions: 2.625" W (base) x 6" H
- Imprint Areas: 2" W x 3" H; 10.2" W x 6.2" H wrap
- Cantaloupe, Neo Mint, Purist Blue & eight other colors available

50	300	1000
\$14.97	\$13.30	\$11.63



24 OZ. TUMBLER

- Double-wall insulated tumbler
- Keeps hot drinks hot & cold drinks cold
- Dimensions: 2.625" W (base) x 7.875" H
- Imprint Areas: 2" W x 3" H; 11.9" W x 8" H wrap
- Amethyst Purple, Emerald Green, Quartz Black & eight other colors available

50	300	1000
\$18.30	\$16.63	\$14.97



B

TRITAN PINT

C

- 16 oz. single-wall Eastman Tritan pint
- Reusable & break resistant
- U.S. made
- Hand-wash recommended
- Dimensions: 2.1875" W (base) x 5.875" H
- Imprint Areas: 3" W x 3" H or 3" W x 5" H per side; 9" W x 3" H or 10" W x 5" H wrap
- Clear

60	120	180
\$6.17	\$5.17	\$4.17



12 OZ. STAINLESS TUMBLER

D

- Keeps hot drinks hot for six hours & cold drinks cold for 15 hours
- Reduces condensation
- Splash-proof, shatter-proof & easy-close lid
- Dimensions: 2" W (base) x 4.854" H
- Imprint Area: 12.2" W x 3" H
- Stainless Steel

25	300	1000
\$19.80	\$19.10	\$18.40



20 OZ. STAINLESS TUMBLER

- Keeps hot drinks hot for eight hours & cold drinks cold for 24 hours
- Reduces condensation
- Splash-proof, shatter-proof & easy-close lid
- Dimensions: 2.75" W (base) x 6.75" H
- Imprint Area: 9.9" W x 6.2" H
- Stainless Steel

25	300	1000
\$22.92	\$22.08	\$21.25



E

ANTIBACTERIAL STYLUS PEN

- Twist-action pen with stylus & rubber grip
- Antibacterial additive applied during production cycle to ensure efficacy
- Dimensions: 5.5" H
- Imprint Areas: 1.25" W x 0.5" H; 2" W x 0.21875" H
- Blue, Lime Green, Orange, Purple, Red, Black, Yellow.

250	500	1000	2500
\$1.14	\$0.99	\$0.86	\$0.75

A



ELITE WITH STYLUS

- Ballpoint pen/stylus with matching grip & clip
- Eversmooth hybrid ink available in black & blue
- Includes SimpliColor imprint
- Dimensions: 0.5" W x 6" H
- Imprint Area: 3.18" W x 1.6" H
- Black, Dark Blue, Green, Light Blue, Orange, Red, Pink, Purple, Yellow

250	1000	2500	5000
\$1.19	\$1.15	\$1.05	\$0.99

B



C

IPROTECT ANTIBACTERIAL PEN

- Plunger-action pen
- Antibacterial additive guarantees 99.9% protection against bacteria (applied during production cycle to ensure efficacy)
- Waterproof, scratch-proof & UV-proof
- Dimensions: 5.5" H
- Imprint Area: 1.5" W x 0.75" H
- Blue, Green, Orange, Purple, Red, White/Black

250	500	1000	2500
\$1.39	\$1.21	\$1.05	\$0.91



ANTIBACTERIAL DART PEN

- Plunger-action pen
- Antibacterial additive applied during production cycle to ensure efficacy
- Dimensions: 5.75" H
- Imprint Area: 1.75" W x 0.625" H
- Black, Blue, Lime Green, Pink, Purple, Red, Yellow

250	500	1000	2500
\$0.85	\$0.74	\$0.64	\$0.56

D



E

ANTIBACTERIAL SATIN PEN

- Rubberized aluminum plunger-action pen
- Antibacterial additive applied during production cycle to ensure efficacy
- Dimensions: 5.5" H
- Imprint Areas: 1.25" W x 0.5" H; 1" W x 0.21875" H
- Black, Blue, Lime Green, Orange, Purple, Red, Yellow

250	500	1000	2500
\$0.95	\$0.83	\$0.72	\$0.63



SUMO WRESTLER STRESS RELIEVER

- Squatting sumo wrestler
- Dimensions: 3.5" W x 4" H
- Imprint Areas: Front: 1" W x .75" H; Back: 1.5" W x 0.25" H

150	250	500	1000
\$3.24	\$3.17	\$2.96	\$2.69



MATTE RUBBER DUCK

- Not intended for use by children or pets
- Dimensions: 3.5" W x 3.5" H
- Imprint Area: 0.75" W x 0.5" H
- Blue, Gray, Orange, Pink

150	250	500	1000
\$1.93	\$1.84	\$1.71	\$1.60



STATE PAPERWEIGHT

- Cast stone paperweight
- Made in U.S.
- All 50 state shapes available
- Dimensions: 4" W x 0.75" H x 4" D (estimated)
- 95 colors available

25	50	100	250
\$14.90	\$11.55	\$11.00	\$10.40



STONE PAPERWEIGHT

- Cast stone paperweight
- Made in U.S.
- Dimensions: 3.5" W x 1" H x 2.75" D
- Imprint Area: 2" W x 1.5" H
- 95 colors available

25	50	100	250
\$13.85	\$10.50	\$10.00	\$9.45



Promo Essentials

OVAL CAR MAGNET

- Small oval outdoor-use vehicle magnet
- U.S. made
- Dimensions: 6" W x 4" H
- Imprint Area: 6" W x 4" H
- White

100	250	500	1000
\$3.03	\$1.54	\$1.30	\$0.96



A

DYE-SUBLIMATED FLIGHT FLAP PRO PHONE ACCESSORY

- Foldable neoprene & lycra phone/tablet holder
- Work-from-home & travel solution
- Fully customizable
- Dimensions: 5.25" W x 9.5" H
- Imprint Area: 4" W x 8" H

50	100	250	500
\$12.48	\$11.48	\$10.98	\$10.48



B

Sales Tip

Promote new safety protocols, updated hours or that your business has reopened.

REFRIGERATOR MAGNET

- 20 mil rectangle magnet with rounded corners
- U.S. made
- Dimensions: 4" W x 3.5" H
- Imprint Area: 4" W x 3.5" H
- White

250	500	1000	2500
\$0.64	\$0.58	\$0.48	\$0.40

C



We are open now and BACK TO WORK!

We will, of course, continue to protect our employees and our customers by following our state regulations on distancing and operational protections from COVID-19!

We are all in this together, and we WILL get through it!



A

SLIDER WRISTBAND/ LOOP WITH CINCH KEY TAG

- Soft vinyl key chain with large loop & cinch
- U.S. made
- Dimensions: 0.5" W x 5.812" H
- Imprint Area: 0.312" W x 8.125" H
- White

250	500	1000	2500
\$0.93	\$0.89	\$0.84	\$0.74

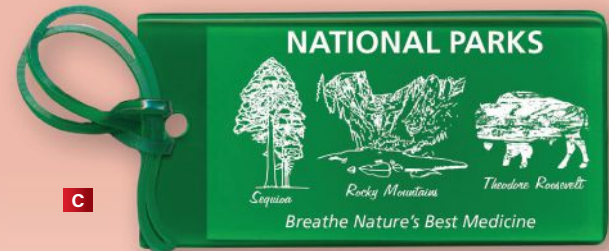


B

STANDARD OVAL KEY TAG

- Soft vinyl key chain with nickel-plated split key ring
- U.S. made
- Dimensions: 1.375" W x 2.125" H
- Imprint Area: 1.375" W x 2.125" H
- White

250	500	1000	2500
\$0.66	\$0.60	\$0.54	\$0.49



C

LUGGAGE TAG WITH BUSINESS CARD INSERT

- Luggage tag with pocket for business card
- U.S. made
- Dimensions: 2.25" W x 4" H
- Imprint Area: 1.75" W x 3.25" H
- 18 colors available

250	500	1000	2500
\$1.07	\$0.99	\$0.93	\$0.81

Apparel



OTTO SNAP SIX-PANEL MID-PROFILE SNAPBACK HAT

- 85/15 acrylic/wool twill flat-visor cap
- Plastic snap closure
- Size: One size fits most
- Imprint Area: 4" W x 1.75" H
- Aqua/Black, Navy, Orange/Royal & 22 other color combinations available

12	144	288	576
\$7.70	\$7.60	\$7.50	\$7.40



FIVE-PANEL HIGH-CROWN MESH-BACK TRUCKER HAT

- 100% polyester foam front & 100% nylon back cap
- Plastic snap closure
- Size: One size fits most
- Imprint Area: 4" W x 1.75" H
- Gold, Red, Turquoise & 19 other colors available

12	144	288	576
\$4.00	\$4.00	\$4.00	\$4.00



OTTO COMFY FIT SIX-PANEL LOW-PROFILE MESH-BACK TRUCKER HAT

- 100% cotton twill with stretchable 98/2 polyester/mesh back cap
- Plastic snap closure
- Size: One size fits most
- Imprint Area: 4" W x 1.75" H
- Black, Black/White, Charcoal Gray/Black, Navy/White, Red/Black, Royal/White

12	144	288	576
\$9.20	\$9.10	\$9.00	\$8.90



HEATHER SIX-PANEL LOW-PROFILE MESH-BACK TRUCKER HAT

- 70/28/2 polyester/rayon/spandex front with 100% polyester back cap
- Plastic snap closure
- Size: One size fits most
- Imprint Area: 4" W x 1.75" H
- Red/Heather Gray/White, Kelly/Heather Gray/Black & 23 other color combinations available

12	144	288	576
\$6.40	\$6.30	\$6.20	\$6.10

SIX-PANEL LOW-PROFILE MESH-BACK TRUCKER HAT

- 65/35 polyester/cotton front with 100% polyester back cap
- Plastic snap closure
- Size: One size fits most
- Imprint Area: 4" W x 1.75" H
- Black/Neon Pink, Red/Navy/White & 54 other color combinations available

12	144	288	576
\$6.00	\$5.90	\$5.80	\$5.70



DELTA DRI 30/1'S ADULT PERFORMANCE SHORT SLEEVE TEE

- 4.3 oz. 65/35 polyester/combed ringspun cotton tee
- Moisture wicking & antimicrobial
- Tear-away label
- Sizes: S-3XL
- Athletic Heather, Cardinal, Royal & 13 other colors available

1

\$6.92 (blank)



UNISEX IDEAL HEAVYWEIGHT CREW

- 5.6 oz. 20s 100% cotton tee
- Relaxed fit
- Tear-away label
- Sizes: XS-4XL
- Cool Blue, Graphite Black, Military Green & 16 other colors available

Call for Pricing



C

UNISEX CVC CREW

- 4.3 oz. 32s 60/40 combed ringspun cotton/polyester CVC jersey tee
- Tear-away label
- Sizes: XS-4XL
- Banana Cream, Purple Rush, Storm & 27 other colors available

Call for Pricing



UNISEX SUEDED TEE

- 4.2 oz. 52/48 Airlume combed ringspun cotton/poly tee
- Sueded jersey
- Retail fit
- Sizes: XS-2XL
- Deep Heather, Heather Mauve, Heather Peach & 22 other colors available

Call for Pricing



WOMEN'S JERSEY CROP TEE

- 100% Airlume combed ringspun cotton tee
- Oversized sleeves
- Relaxed body
- Sizes: S-L
- Black, Military Green, Mustard, Vintage White

Call for Pricing



DELTA FLEECE ADULT LIGHTWEIGHT HOODIE

- 7 oz. 75/25 cotton/polyester fleece hoodie with front pouch
- 1X1 rib cuffs & bottom band with spandex
- Tear-away label
- Sizes: S-3XL
- Athletic Navy, Heliconia Pink, Safety Green & 11 other colors available

1
\$1704 (blank)



WOMEN'S CROPPED FLEECE HOODIE

- 7 oz. 52/48 combed ringspun cotton/poly fleece hoodie
- Dropped shoulder & raw hem
- Sizes: S-2XL
- Black, Dark Gray Heather, Heather Dust, Military Green, Peach, Storm, White

Call for Pricing



Price Index

Product Price ...Page

Less than \$1.00

Latex-Free Nitrile Glove.....	\$0.23	13
Disposable Vinyl Glove.....	\$0.44	13
Refrigerator Magnet.....	\$0.64	30
Standard Oval Key Tag.....	\$0.66	31
Antibacterial Dart Pen.....	\$0.85	28
Slider Wristband/Loop with Cinch Key Tag.....	\$0.93	31
Antibacterial Satin Pen.....	\$0.95	28
0.5 fl. oz. Instant Hand Sanitizer Gel Pack.....	\$0.99	18
Disposable Three-Ply Mask.....	\$0.99	12

\$1.01-\$5.00

Mask Extender Ear Protection.....	\$1.04	13
Luggage Tag with Business Card Insert.....	\$1.07	31
Antibacterial Stylus Pen.....	\$1.14	28
Full-Color Face Mask Strap Hook & Earsaver.....	\$1.15	13
Elite with Stylus.....	\$1.19	28
iPROTECT Antibacterial Pen.....	\$1.39	28
Antimicrobial Non-Medical Face Mask.....	\$1.45	7
Disposable Three-Ply Mask.....	\$1.61	12
Rabbit Skins Kids' 100% Cotton Two-Ply Face Mask.....	\$1.69	8
Adult 100% Cotton Two-Ply Face Mask.....	\$1.89	7
Matte Rubber Duck.....	\$1.93	29
1 oz. Hand Sanitizer.....	\$2.01	17
Reusable Forehead Thermometer.....	\$2.13	15
Hand Soap Sheets in Compact Travel Case.....	\$2.20	19
Stop Did You Wash Your Hands? Graphic.....	\$2.30	22
Antibacterial Wet Wipe Packet.....	\$2.36	19
Tek Booklet 2 with 0.5 fl. oz. Instant Hand Sanitizer Gel Pack.....	\$2.44	18
2 oz. Antibacterial Hand Sanitizer.....	\$2.70	17
Oval Car Magnet.....	\$3.03	30
Sumo Wrestler Stress Reliever.....	\$3.24	29
Glenwood Nonwoven Tote Bag.....	\$3.29	25
Stock Design Seat Sign.....	\$3.60	21
1.7 oz. Hand Sanitizer Spray Bottle.....	\$3.68	18

Product Price ...Page

2 oz. Hand Sanitizer.....	\$3.68	17
Five-Panel High-Crown Mesh-Back Trucker Hat.....	\$4.00	33
Stop the Spread Floor Graphic.....	\$5.00	22
Washable & Reusable Microfiber Face Mask.....	\$5.00	11

\$5.01-\$10.00

Dye-Sublimated Three-Layer Mask.....	\$5.62	8
Six-Panel Low-Profile Mesh-Back Trucker Hat.....	\$6.00	33
Tritan Pint.....	\$6.17	27
Brooklyn Mask.....	\$6.25	10
Heather Six-Panel Low-Profile Mesh-Back Trucker Hat.....	\$6.40	33
Solid 100% Cotton Poplin Reusable Three-Ply Mask.....	\$6.67	7
Delta Dri 30/1's Adult Performance Short Sleeve Tee.....	\$6.92	34
Cotton Reusable Mask.....	\$6.98	7
Imprinted Face Cover with Elastic Head Loop.....	\$7.25	10
KN95 Mask.....	\$7.30	12
OTTO Snap Six-Panel Mid-Profile Snapback Hat.....	\$7.70	33
10 oz. Hand Sanitizer Gel.....	\$8.25	16
Rectangle Stay Safe Floor Decal.....	\$8.60	21
Toddy ICE Cooling Active Band.....	\$9.07	9
Spartan Lunch Cooler.....	\$9.08	25
OTTO Comfy Fit Six-Panel Low-Profile Mesh-Back Trucker Hat.....	\$9.20	33
8 oz. Top Pump Hand Sanitizer.....	\$9.99	16
Three-Layer Reusable Custom Face Mask.....	\$9.99	11

\$10.01-\$25.00

Patterned 100% Cotton Poplin Reusable Three-Ply Mask.....	\$10.25	8
Essential Back to Work Kit.....	\$10.25	19
8 oz. Hand Sanitizer Pump Bottle.....	\$10.48	16
Multifunctional Wrap.....	\$11.81	9

Product Price ...Page

Ibiza 17 oz. Double-Wall Stainless Bottle.....	\$11.99	26
Dye-Sublimated Flight Flap Pro Phone Accessory.....	\$12.48	30
Circle Stay Safe Floor Decal.....	\$13.50	21
Square Stay Safe Floor Decal.....	\$13.50	22
16 oz. Hand Sanitizer Pump Bottle.....	\$13.63	16
Stone Paperweight.....	\$13.85	29
State Paperweight.....	\$14.90	29
Sasa Bottle.....	\$14.95	26
16 oz. Tumbler.....	\$14.97	27
Monsoon Umbrella.....	\$16.65	25
Delta Fleece Adult Lightweight Hoodie.....	\$17.04	35
24 oz. Tumbler.....	\$18.30	27
12 oz. Stainless Tumbler.....	\$19.80	27
24 oz. Water Bottle.....	\$21.63	26
17 oz. Slim Stainless Bottle.....	\$22.30	26
20 oz. Stainless Tumbler.....	\$22.92	27

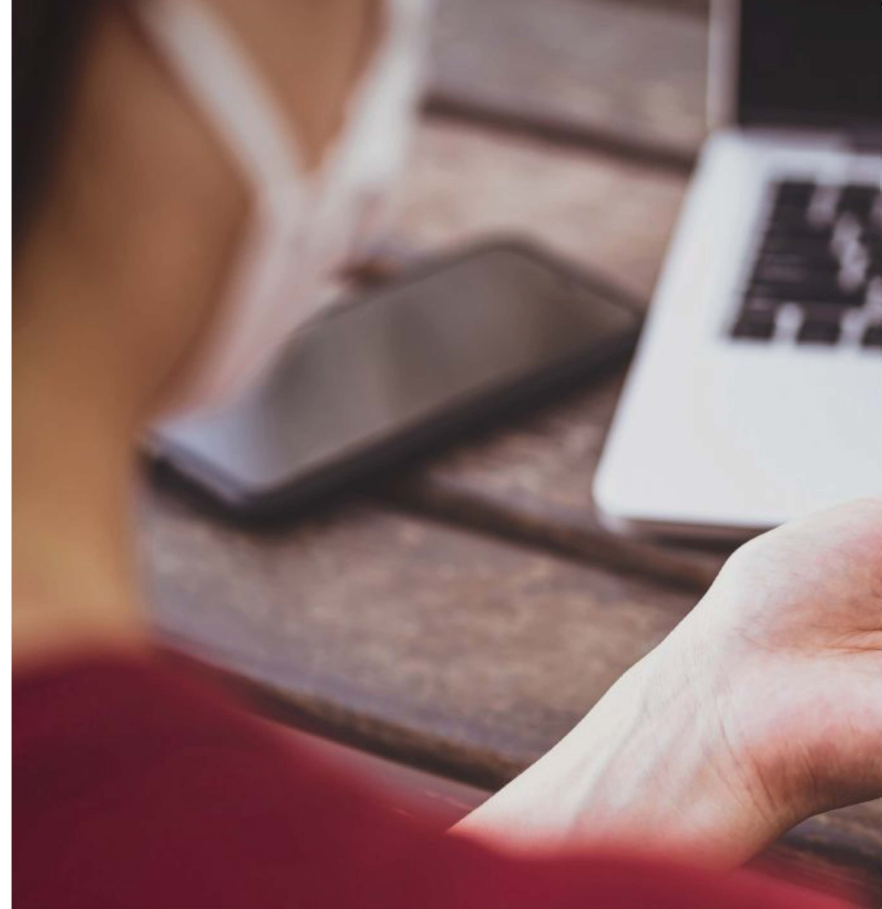
More Than \$50.01

Custom Floor Decal.....	\$50.75	22
12" Indoor Surface Grip Circles (set of 6).....	\$80.00	21
Protective Counter Barrier.....	\$115.00	23
Topaz Import Dye-Sublimated Technical Backpack.....	\$123.00	25
Touch-Free Infrared Thermometer.....	\$125.00	15
Custom Hand Sanitizer Stand.....	\$216.00	15
13' Streamline Blade Sail Sign Kit.....	\$316.00	23
Vinyl Wall Barrier.....	\$385.00	23

Call for Pricing

Eco Adult Face Mask.....	9
Eco Youth Face Mask.....	8
Lightweight 100% Airlume Cotton Face Cover.....	11
Two-Ply Reusable Face Mask.....	9
Unisex CVC Crew.....	34
Unisex Ideal Heavyweight Crew.....	34
Unisex Sueded Tee.....	35
Women's Cropped Fleece Hoodie.....	35
Women's Jersey Crop Tee.....	35





A blue promotional banner for Clearpath Marketing. On the left is a blue tumbler with a white logo. In the center is the "clearpath marketing" logo, with "clearpath" in a large, bold, lowercase font and "marketing" in a smaller font below it, separated by horizontal lines. Below the logo are the website "clearpathmg.com", the phone number "(206) 487-3010", and the email "info@clearpathmg.com". On the right side of the banner is a row of seven pens in various shades of blue and purple, each with the "Wishcare Hospital" logo on the barrel.

clearpath
marketing

clearpathmg.com
(206) 487-3010
info@clearpathmg.com

