

RVE

1901

**REMINGTON
& VERNICK
ENGINEERS**

9 ALLEN STREET
TOMS RIVER, NJ 08753
(732) 286-9220, FAX (732) 505-8416
WEB SITE ADDRESS : WWW.RVE.COM
Certification of Authorization: 24 GA 28003300
-ENGINEERING EXCELLENCE-

ALAN B. DITTENHOFER
NJ PROFESSIONAL ENGINEER LIC. No. 37672

PLANS WHICH DO NOT BEAR
AN EMBOSSED SEAL ARE NOT VALID.

ALL DOCUMENTS PREPARED BY REMINGTON & VERNICK ENGINEERS AND AFFILIATES ARE INSTRUMENTS OF SERVICE IN RESPECT OF THE PROJECT. THEY ARE NOT INTENDED OR REPRESENTED TO BE SUITABLE FOR REUSE BY OWNER OR OTHERS ON EXTENSIONS OF THE PROJECT OR ON ANY OTHER PROJECT. ANY REUSE WITHOUT WRITTEN VERIFICATION OR ADAPTATION BY REMINGTON & VERNICK ENGINEERS AND AFFILIATES FOR THE SPECIFIC PURPOSE INTENDED WILL BE AT OWNERS SOLE RISK AND WITHOUT LIABILITY OR LEGAL EXPOSURE TO REMINGTON & VERNICK ENGINEERS AND AFFILIATES. OWNER SHALL INDEMNIFY AND HOLD HARMLESS REMINGTON & VERNICK ENGINEERS AND AFFILIATES FROM ALL CLAIMS, DAMAGES, LOSSES AND EXPENSES ARISING OUT OF OR RESULTING THEREFROM.

No.	REVISION	DATE	BY (initials)

PLAN SHEET (1)

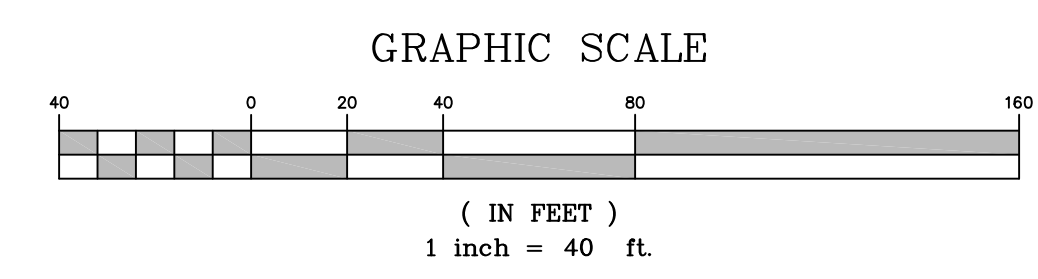
BOROUGH OF OCEAN GATE
H.M.G.P. WAVE ENERGY DISSIPATION
AND FLOOD MITIGATION
BOROUGH OF OCEAN GATE OCEAN COUNTY NEW JERSEY

DRAWN BY: JK / PS	DESIGN BY: PH	CHECKED BY: PH	SCALE: AS SHOWN
DATE: 7-15-20	SHEET No.: 1 of 6		
JOB No.: 1522-U-029			
N:\DRAW\Ocean Gate\1522U029\U029-PLANS			



Fill Elevation depth Table

Number	Minimum Elevation	Maximum Elevation	Color
1	-4.000	-3.000	Red
2	-3.000	-2.000	Orange
3	-2.000	-1.000	Yellow
4	-1.000	0.000	Light Green
5	0.000	1.000	Green
6	1.000	2.000	Light Blue
7	2.000	3.000	Blue
8	3.000	4.000	Dark Blue
9	4.000	5.000	Indigo
10	5.000	6.000	Violet
11	6.000	7.000	Dark Purple

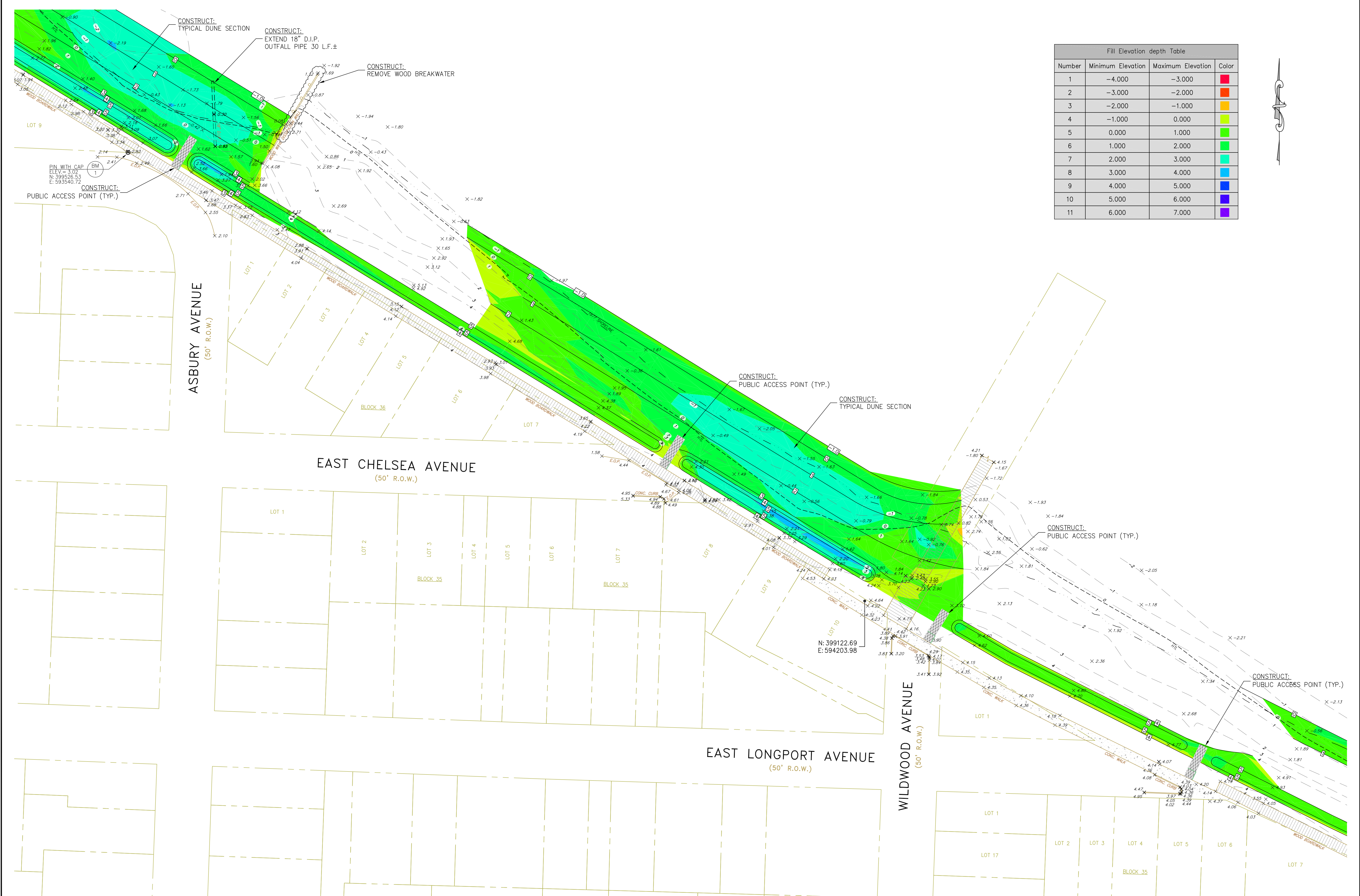
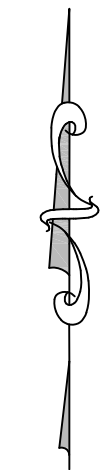


LEGEND

--- WETLANDS LINE	----- HIGH TIDE LINE (HTL) ELEV. +0.21
--- MEAN HIGHER HIGH TIDE (MHHW)	----- MEAN HIGH WATER LINE (MHW) ELEV. +0.10
--- 1977 TIDELANDS CLAIM LINE	----- MEAN TIDE LEVEL ELEV. -0.08
--- PROPOSED WAVE DISSIPATION WALL	----- MEAN LOW WATER LINE (MLWL) ELEV. -0.25
--- PROPOSED MINOR CONTOUR	----- MEAN LOWER LOW WATER (MLLW) ELEV. -0.30
--- PROPOSED MAJOR CONTOUR	

- SURVEY NOTES:**
- THE HORIZONTAL DATUM IS BASED ON NAD-1983 (GRID COORDINATES) AND THE VERTICAL DATUM IS BASED ON NAVD-1988 (ADD 1.17 FEET TO THESE ELEVATIONS TO CONVERT TO NGVD-1929 DATUM).
 - PROPERTY AND RIGHT-OF-WAY LINES SHOWN ON THESE PLANS ARE APPROXIMATE LOCATIONS BASED ON THE CURRENT TAX MAPS OF THE BOROUGH OF OCEAN GATE, OCEAN COUNTY, NEW JERSEY. PROPERTY AND RIGHT-OF-WAY LINES ARE SHOWN FOR GRAPHICAL INFORMATION ONLY AND HAVE NOT BEEN FIELD VERIFIED.
 - EXISTING TOPOGRAPHIC CONDITIONS WERE SURVEYED BY REMINGTON & VERNICK ENGINEERS UNDER THE SUPERVISION OF CHARLES E. ADAMSON, N.J.P.L.S. LICENSE NO. 42627. THE SURVEY WORK WAS COMPLETED ON DECEMBER 6, 2016.

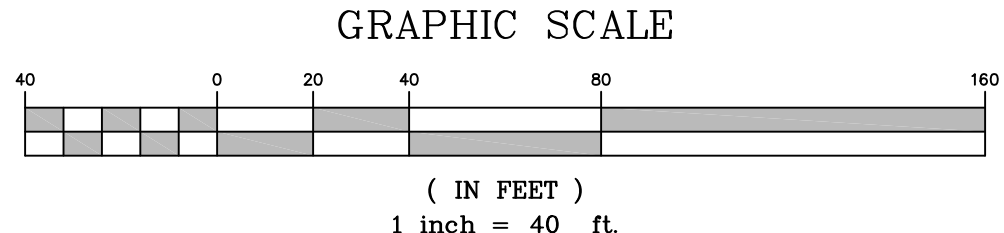
Fill Elevation depth Table			
Number	Minimum Elevation	Maximum Elevation	Color
1	-4.000	-3.000	Red
2	-3.000	-2.000	Orange
3	-2.000	-1.000	Yellow
4	-1.000	0.000	Light Green
5	0.000	1.000	Green
6	1.000	2.000	Light Blue
7	2.000	3.000	Blue
8	3.000	4.000	Dark Blue
9	4.000	5.000	Dark Purple
10	5.000	6.000	Black
11	6.000	7.000	Black



LEGEND

— — — — —	WETLANDS LINE
- - - - -	MEAN HIGHER HIGH TIDE (MHHW)
- · - · - ·	1977 TIDELANDS CLAIM LINE
— — — — —	PROPOSED WAVE DISSIPATION WALL
- - - - -	PROPOSED MINOR CONTOUR
- - - - -	PROPOSED MAJOR CONTOUR

SOLID LINE	WETLANDS LINE	ELEV. +0.21
DASHED LINE	MEAN HIGH WATER LINE (MHW)	ELEV. +0.10
DASHED LINE	MEAN TIDE LEVEL	ELEV. -0.08
DASHED LINE	MEAN LOW WATER LINE (MLW)	ELEV. -0.25
DASHED LINE	MEAN LOWER LOW WATER (MLLW)	ELEV. -0.30



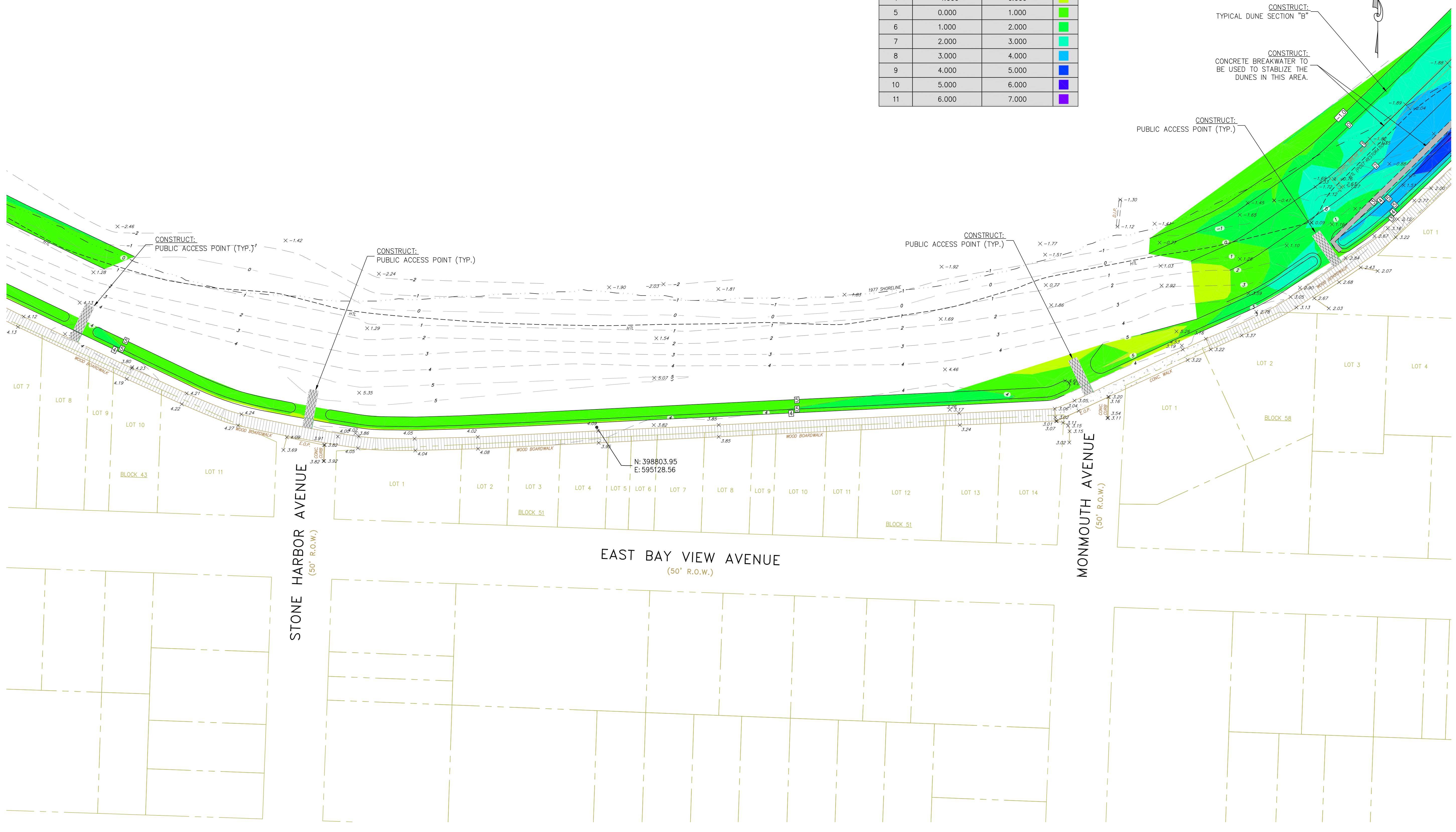
- SURVEY NOTES:**
- THE HORIZONTAL DATUM IS BASED ON NAD-1983 (GRID COORDINATES) AND THE VERTICAL DATUM IS BASED ON NAVD-1988 (ADD 1.17 FEET TO THESE ELEVATIONS TO CONVERT TO NGVD-1929 DATUM).
 - PROPERTY AND RIGHT-OF-WAY LINES SHOWN ON THESE PLANS ARE APPROXIMATE LOCATIONS BASED ON THE CURRENT TAX MAPS OF THE BOROUGH OF OCEAN GATE, OCEAN COUNTY, NEW JERSEY. PROPERTY AND RIGHT-OF-WAY LINES ARE SHOWN FOR GRAPHICAL INFORMATION ONLY AND HAVE NOT BEEN FIELD VERIFIED.
 - EXISTING TOPOGRAPHIC CONDITIONS WERE SURVEYED BY REMINGTON & VERNICK ENGINEERS UNDER THE SUPERVISION OF CHARLES E. ADAMSON, N.J.P.L.S. LICENSE NO. 42627. THE SURVEY WORK WAS COMPLETED ON DECEMBER 6, 2016.

PLANS WHICH DO NOT BEAR AN EMBOSSED SEAL ARE NOT VALID.
 ALL DOCUMENTS PREPARED BY REMINGTON & VERNICK ENGINEERS AND AFFILIATES ARE INSTRUMENTS OF SERVICE IN RESPECT OF THE PROJECT. THEY ARE NOT INTENDED OR REPRESENTED TO BE SUITABLE FOR REUSE BY OWNER OR OTHERS ON EXTENSIONS OF THE PROJECT OR ON ANY OTHER PROJECT. ANY REUSE WITHOUT WRITTEN VERIFICATION OR ADAPTATION BY REMINGTON & VERNICK ENGINEERS AND AFFILIATES FOR THE SPECIFIC PURPOSE INTENDED WILL BE AT OWNERS SOLE RISK AND WITHOUT LIABILITY OR LEGAL EXPOSURE TO REMINGTON & VERNICK ENGINEERS AND AFFILIATES. OWNER SHALL INDEMNIFY AND HOLD HARMLESS REMINGTON & VERNICK ENGINEERS AND AFFILIATES FROM ALL CLAIMS, DAMAGES, LOSSES AND EXPENSES ARISING OUT OF OR RESULTING THEREFROM.

NO.	REVISION	DATE	BY	CHKD.

PLAN SHEET (2)
 BOROUGH OF OCEAN GATE
H.M.G.P. WAVE ENERGY DISSIPATION AND FLOOD MITIGATION
 BOROUGH OF OCEAN GATE OCEAN COUNTY NEW JERSEY
 N:\DRAW\Ocean Gate\1522U029\U029-PLANS.dwg 7/15/2020 8:47:59 PM

Fill Elevation depth Table			
Number	Minimum Elevation	Maximum Elevation	Color
1	-4.000	-3.000	Red
2	-3.000	-2.000	Orange
3	-2.000	-1.000	Yellow
4	-1.000	0.000	Light Green
5	0.000	1.000	Green
6	1.000	2.000	Light Blue
7	2.000	3.000	Blue
8	3.000	4.000	Dark Blue
9	4.000	5.000	Indigo
10	5.000	6.000	Violet
11	6.000	7.000	Dark Purple



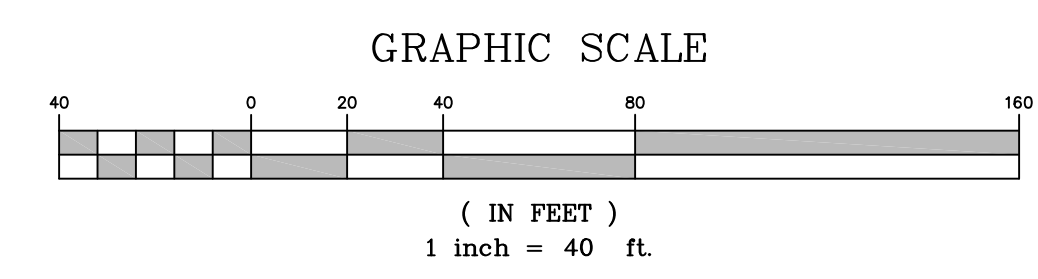
CONSTRUCT:
TYPICAL DUNE SECTION "B"

CONSTRUCT:
CONCRETE BREAKWATER TO BE USED TO STABILIZE THE DUNES IN THIS AREA.

CONSTRUCT:
PUBLIC ACCESS POINT (TYP.)

LEGEND	
	WETLANDS LINE
	MEAN HIGHER HIGH TIDE (MHHW)
	1977 TIDELANDS CLAIM LINE
	PROPOSED WAVE DISSIPATION WALL
	PROPOSED MINOR CONTOUR
	PROPOSED MAJOR CONTOUR

HIGH TIDE LINE (HTL)	ELEV. +0.21
MEAN HIGH WATER LINE (MHWL)	ELEV. +0.10
MEAN TIDE LEVEL	ELEV. -0.08
MEAN LOW WATER LINE (MLWL)	ELEV. -0.25
MEAN LOWER LOW WATER (MLLW)	ELEV. -0.30



- SURVEY NOTES:**
1. THE HORIZONTAL DATUM IS BASED ON NAD-1983 (GRID COORDINATES) AND THE VERTICAL DATUM IS BASED ON NAVD-1988 (ADD 1.17 FEET TO THESE ELEVATIONS TO CONVERT TO NGVD-1929 DATUM).
 2. PROPERTY AND RIGHT-OF-WAY LINES SHOWN ON THESE PLANS ARE APPROXIMATE LOCATIONS BASED ON THE CURRENT TAX MAPS OF THE BOROUGH OF OCEAN GATE, OCEAN COUNTY, NEW JERSEY. PROPERTY AND RIGHT-OF-WAY LINES ARE SHOWN FOR GRAPHICAL INFORMATION ONLY AND HAVE NOT BEEN FIELD VERIFIED.
 3. EXISTING TOPOGRAPHIC CONDITIONS WERE SURVEYED BY REMINGTON & VERNICK ENGINEERS UNDER THE SUPERVISION OF CHARLES E. ADAMSON, N.J.P.L.S. LICENSE NO. 42627. THE SURVEY WORK WAS COMPLETED ON DECEMBER 6, 2016.

REMINGTON & VERNICK ENGINEERS
9 ALLEN STREET
TOMS RIVER, NJ 08753
(732) 286-9220, FAX (732) 505-8416
WEB SITE ADDRESS: WWW.RVE.COM
Certification of Authorization: 24 GA 28003300
-ENGINEERING EXCELLENCE-

ALAN B. DITTENHOFER
NJ PROFESSIONAL ENGINEER LIC. No. 37672

PLANS WHICH DO NOT BEAR AN EMBOSSED SEAL ARE NOT VALID.

ALL DOCUMENTS PREPARED BY REMINGTON & VERNICK ENGINEERS AND AFFILIATES ARE INSTRUMENTS OF SERVICE IN RESPECT OF THE PROJECT. THEY ARE NOT INTENDED OR REPRESENTED TO BE SUITABLE FOR REUSE BY OWNER OR OTHERS ON EXTENSIONS OF THE PROJECT OR ON ANY OTHER PROJECT. ANY REUSE WITHOUT WRITTEN VERIFICATION OR ADAPTATION BY REMINGTON & VERNICK ENGINEERS AND AFFILIATES FOR THE SPECIFIC PURPOSE INTENDED WILL BE AT OWNERS SOLE RISK AND WITHOUT LIABILITY OR LEGAL EXPOSURE TO REMINGTON & VERNICK ENGINEERS AND AFFILIATES. AND OWNERS SHALL INDEMNIFY AND HOLD HARMLESS REMINGTON & VERNICK ENGINEERS AND AFFILIATES FROM ALL CLAIMS, DAMAGES, LOSSES AND EXPENSES ARISING OUT OF OR RESULTING THEREFROM.

NO.	REVISION	DATE	BY (I/C)

PLAN SHEET (3)

BOROUGH OF OCEAN GATE
H.M.G.P. WAVE ENERGY DISSIPATION AND FLOOD MITIGATION
BOROUGH OF OCEAN GATE OCEAN COUNTY NEW JERSEY

DATE: 7-15-20
JOB NO: 1522-U-029

SCALE: AS SHOWN
SHEET NO: 3 of 6

N:\DRAW\Ocean Gate\1522U029\U029-PLANS

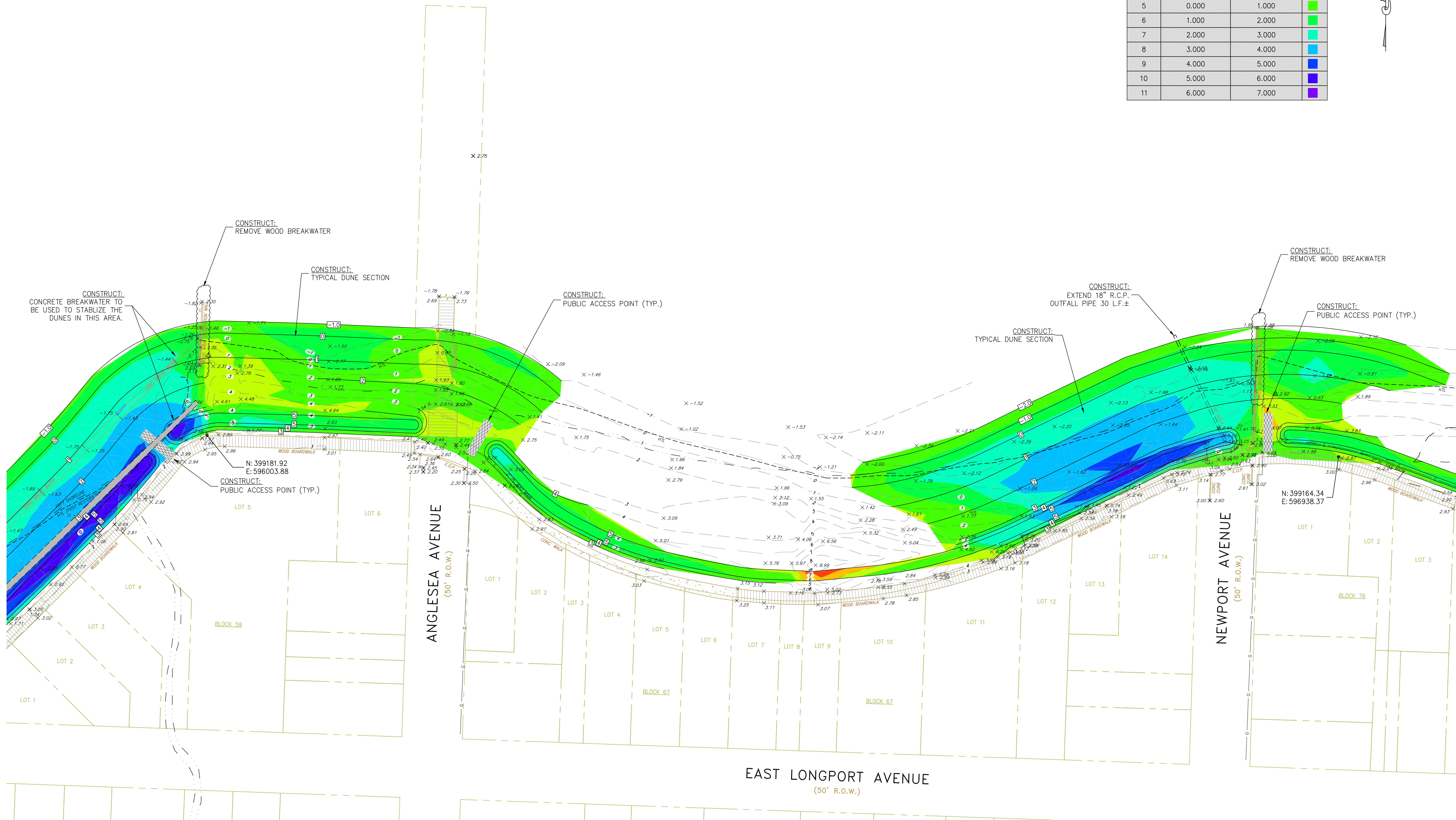
RVE

1901

REMINGTON & VERNICK ENGINEERS

9 ALLEN STREET
TOMS RIVER, NJ 08753
(732) 286-9220, FAX (732) 505-8416
WEB SITE ADDRESS : WWW.RVE.COM
Certification of Authorization: 24 GA 28003300
-ENGINEERING EXCELLENCE-ALAN B. DITTENHOFER
NJ PROFESSIONAL ENGINEER LIC. No. 37672

Number	Minimum Elevation	Maximum Elevation	Color
1	-4.000	-3.000	Red
2	-3.000	-2.000	Orange
3	-2.000	-1.000	Yellow
4	-1.000	0.000	Light Green
5	0.000	1.000	Green
6	1.000	2.000	Light Blue
7	2.000	3.000	Blue
8	3.000	4.000	Dark Blue
9	4.000	5.000	Dark Purple
10	5.000	6.000	Purple
11	6.000	7.000	Dark Purple



PLANS WHICH DO NOT BEAR AN EMBOSSED SEAL ARE NOT VALID.

ALL DOCUMENTS PREPARED BY REMINGTON & VERNICK ENGINEERS AND AFFILIATES ARE INSTRUMENTS OF SERVICE IN RESPECT OF THE PROJECT. THEY ARE NOT INTENDED OR REPRESENTED TO BE SUITABLE FOR REUSE BY OWNER OR OTHERS ON EXTENSIONS OF THE PROJECT OR ON ANY OTHER PROJECT. ANY REUSE WITHOUT WRITTEN VERIFICATION OR ADAPTATION BY REMINGTON & VERNICK ENGINEERS AND AFFILIATES FOR THE SPECIFIC PURPOSE INTENDED WILL BE AT OWNERS SOLE RISK AND WITHOUT LIABILITY OR LEGAL EXPOSURE TO REMINGTON & VERNICK ENGINEERS AND AFFILIATES. OWNER SHALL INDEMNIFY AND HOLD HARMLESS REMINGTON & VERNICK ENGINEERS AND AFFILIATES FROM ALL CLAIMS, DAMAGES, LOSSES AND EXPENSES ARISING OUT OF OR RESULTING THEREFROM.

NO.	REVISION	DATE	BY/CHK

PLAN SHEET (4)

BOROUGH OF OCEAN GATE
H.M.G.P. WAVE ENERGY DISSIPATION
AND FLOOD MITIGATION
OCEAN COUNTY
NEW JERSEYBOROUGH OF OCEAN GATE
OCEAN COUNTY
NEW JERSEY

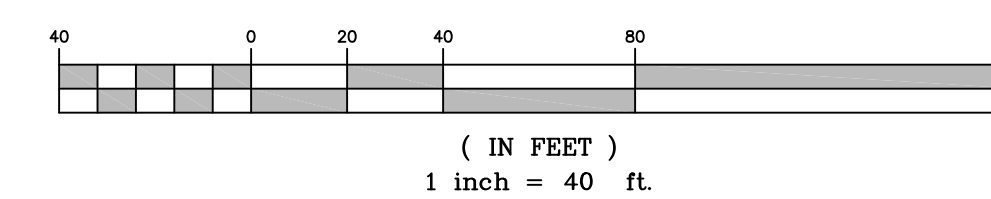
N:\URAW\Ocean Gate\1522\029\U029-PLANS.dwg 7/15/2020 3:48:10 PM

LEGEND

	WETLANDS LINE
	MEAN HIGHER HIGH TIDE (MHHW)
	1977 TIDELANDS CLAIM LINE
	PROPOSED WAVE DISSIPATION WALL
	PROPOSED MINOR CONTOUR
	PROPOSED MAJOR CONTOUR

	HIGH TIDE LINE (HTL)	ELEV. +0.21
	MEAN HIGH WATER LINE (MHW)	ELEV. +0.10
	MEAN TIDE LEVEL	ELEV. -0.08
	MEAN LOW WATER LINE (MLWL)	ELEV. -0.25
	MEAN LOWER LOW WATER (MLLW)	ELEV. -0.30

GRAPHIC SCALE

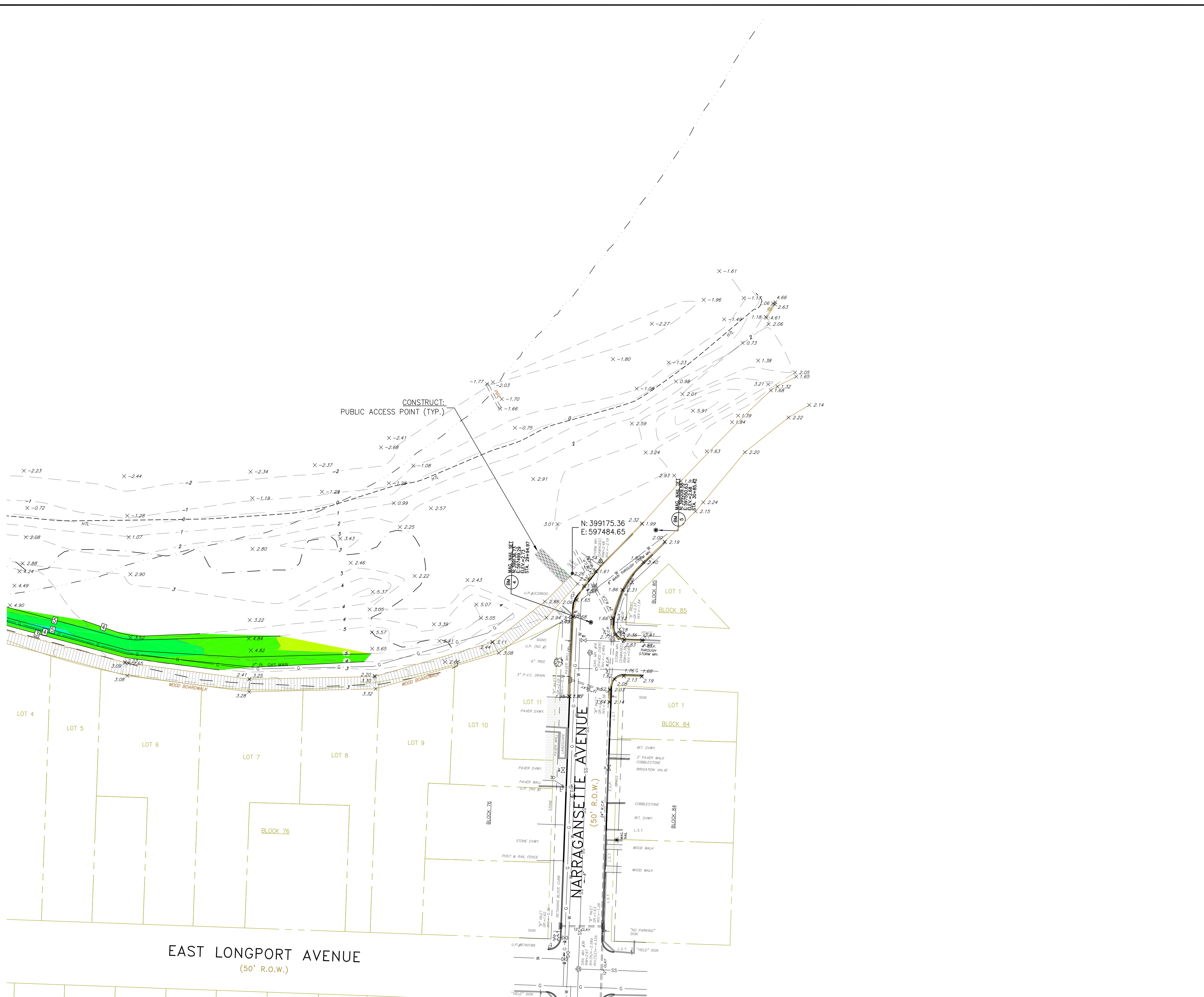
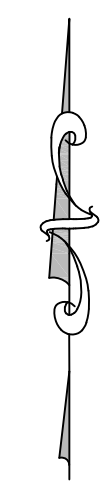


SURVEY NOTES:

- THE HORIZONTAL DATUM IS BASED ON NAD-1983 (GRID COORDINATES) AND THE VERTICAL DATUM IS BASED ON NAVD-1988 (ADD 1.17 FEET TO THESE ELEVATIONS TO CONVERT TO NGVD-1929 DATUM).
- PROPERTY AND RIGHT-OF-WAY LINES SHOWN ON THESE PLANS ARE APPROXIMATE LOCATIONS BASED ON THE CURRENT TAX MAPS OF THE BOROUGH OF OCEAN GATE, OCEAN COUNTY, NEW JERSEY. PROPERTY AND RIGHT-OF-WAY LINES ARE SHOWN FOR GRAPHICAL INFORMATION ONLY AND HAVE NOT BEEN FIELD VERIFIED.
- EXISTING TOPOGRAPHIC CONDITIONS WERE SURVEYED BY REMINGTON & VERNICK ENGINEERS UNDER THE SUPERVISION OF CHARLES E. ADAMSON, N.J.P.L.S. LICENSE NO. 42627. THE SURVEY WORK WAS COMPLETED ON DECEMBER 6, 2016.

DATE	SCALE	SHEET No.
7-15-20	AS SHOWN	4 OF 6
1522-U-029		

N:\URAW\Ocean Gate\1522\029\U029-PLANS



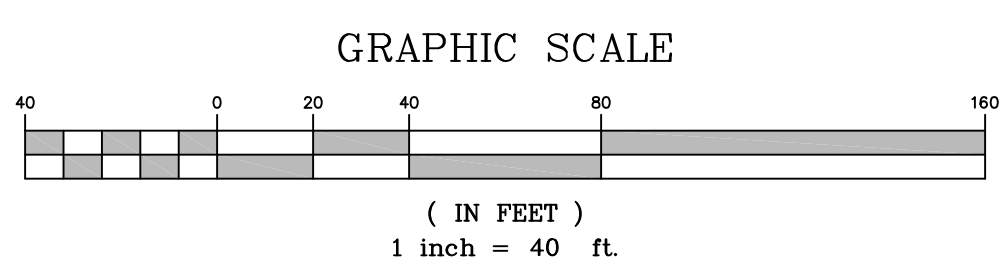
CONSTRUCT:
PUBLIC ACCESS POINT (TYP.)

EAST LONGPORT AVENUE
(50' R.O.W.)

LEGEND

— — — — —	WETLANDS LINE	— — — — —	HIGH TIDE LINE (HTL)	ELEV. +0.21
-----	MEAN HIGHER HIGH TIDE (MHHW)	-----	MEAN HIGH WATER LINE (MHWL)	ELEV. +0.10
- - - - -	1977 TIDELANDS CLAIM LINE	-----	MEAN TIDE LEVEL	ELEV. -0.08
----	PROPOSED WAVE DISSIPATION WALL	-----	MEAN LOW WATER LINE (MLWL)	ELEV. -0.25
-----	PROPOSED MINOR CONTOUR	-----	MEAN LOWER LOW WATER (MLLW)	ELEV. -0.30
-----	PROPOSED MAJOR CONTOUR			

Number	Minimum Elevation	Maximum Elevation	Color
1	-4.000	-3.000	Red
2	-3.000	-2.000	Orange
3	-2.000	-1.000	Yellow
4	-1.000	0.000	Light Green
5	0.000	1.000	Green
6	1.000	2.000	Light Blue
7	2.000	3.000	Blue
8	3.000	4.000	Dark Blue
9	4.000	5.000	Indigo
10	5.000	6.000	Violet
11	6.000	7.000	Purple



SURVEY NOTES:

- THE HORIZONTAL DATUM IS BASED ON NAD-1983 (GRID COORDINATES) AND THE VERTICAL DATUM IS BASED ON NAVD-1988 (ADD 1.17 FEET TO THESE ELEVATIONS TO CONVERT TO NGVD-1929 DATUM).
- PROPERTY AND RIGHT-OF-WAY LINES SHOWN ON THESE PLANS ARE APPROXIMATE LOCATIONS BASED ON THE CURRENT TAX MAPS OF THE BOROUGH OF OCEAN GATE, OCEAN COUNTY, NEW JERSEY. PROPERTY AND RIGHT-OF-WAY LINES ARE SHOWN FOR GRAPHICAL INFORMATION ONLY AND HAVE NOT BEEN FIELD VERIFIED.
- EXISTING TOPOGRAPHIC CONDITIONS WERE SURVEYED BY REMINGTON & VERNICK ENGINEERS UNDER THE SUPERVISION OF CHARLES E. ADAMSON, N.J.P.L.S. LICENSE NO. 42627. THE SURVEY WORK WAS COMPLETED ON DECEMBER 6, 2016.

REMINGTON & VERNICK ENGINEERS
9 ALLEN STREET
TOMS RIVER, NJ 08753
(732) 286-9220, FAX (732) 505-8416
WEB SITE ADDRESS : WWW.RVE.COM
Certification of Authorization: 24 GA 28003300
-ENGINEERING EXCELLENCE-

ALAN B. DITTENHOFER
NJ PROFESSIONAL ENGINEER LIC. No. 37672

PLANS WHICH DO NOT BEAR AN EMBOSSED SEAL ARE NOT VALID.

ALL DOCUMENTS PREPARED BY REMINGTON & VERNICK ENGINEERS AND AFFILIATES ARE INSTRUMENTS OF SERVICE IN RESPECT OF THE PROJECT. THEY ARE NOT INTENDED OR REPRESENTED TO BE SUITABLE FOR REUSE BY OWNER OR OTHERS ON EXTENSIONS OF THE PROJECT OR ON ANY OTHER PROJECT. ANY REUSE WITHOUT WRITTEN VERIFICATION OR ADAPTATION BY REMINGTON & VERNICK ENGINEERS AND AFFILIATES FOR THE SPECIFIC PURPOSE INTENDED WILL BE AT OWNERS SOLE RISK AND WITHOUT LIABILITY OR LEGAL EXPOSURE TO REMINGTON & VERNICK ENGINEERS AND AFFILIATES. OWNER SHALL INDEMNIFY AND HOLD HARMLESS REMINGTON & VERNICK ENGINEERS AND AFFILIATES FROM ALL CLAIMS, DAMAGES, LOSSES AND EXPENSES ARISING OUT OF OR RESULTING THEREFROM.

NO.	REVISION	DATE	BY/CHK

PLAN SHEET (5)

BOROUGH OF OCEAN GATE
H.M.G.P. WAVE ENERGY DISSIPATION AND FLOOD MITIGATION
BOROUGH OF OCEAN GATE OCEAN COUNTY NEW JERSEY

DATE: 7-15-20
JOB NO.: 1522-U-029
SHEET NO.: 5 of 6

N:\DRAW\Ocean Gate\1522U029\U029-PLANS.dwg 7/15/2020 3:48:15 PM



REMINGTON & VERNICK ENGINEERS
 9 ALLEN STREET
 TOMS RIVER, NJ 08753
 (732) 286-9220, FAX (732) 505-8416
 WEB SITE ADDRESS: WWW.RVE.COM
 Certification of Authorization: 24 GA 28003300
 -ENGINEERING EXCELLENCE-

ALAN B. DITTENHOFER
 NJ PROFESSIONAL ENGINEER LIC. No. 37672

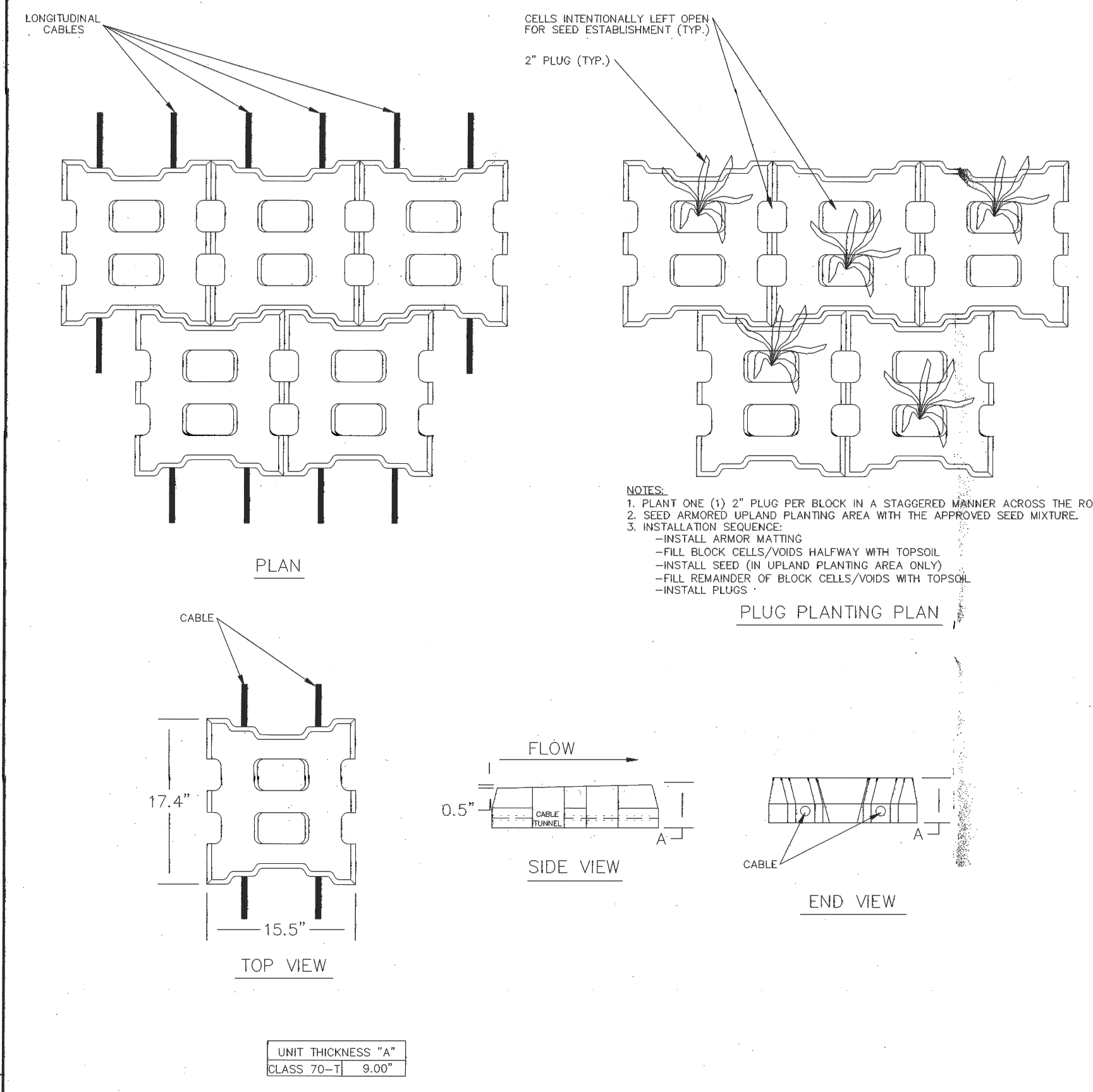
PLANS WHICH DO NOT BEAR AN EMBOSSED SEAL ARE NOT VALID.

ALL DOCUMENTS PREPARED BY REMINGTON & VERNICK ENGINEERS AND AFFILIATES ARE INSTRUMENTS OF SERVICE IN RESPECT OF THE PROJECT. THEY ARE NOT INTENDED OR REPRESENTED TO BE SUITABLE FOR REUSE BY OWNER OR OTHERS ON EXTENSIONS OF THE PROJECT OR ON ANY OTHER PROJECT. ANY REUSE WITHOUT WRITTEN VERIFICATION OR ADAPTATION BY REMINGTON & VERNICK ENGINEERS AND AFFILIATES FOR THE SPECIFIC PURPOSE INTENDED WILL BE AT OWNERS SOLE RISK AND WITHOUT LIABILITY OR LEGAL EXPOSURE TO REMINGTON & VERNICK ENGINEERS AND AFFILIATES. AND OWNER SHALL INDEMNIFY AND HOLD HARMLESS REMINGTON & VERNICK ENGINEERS AND AFFILIATES FROM ALL CLAIMS, DAMAGES, LOSSES AND EXPENSES ARISING OUT OF OR RESULTING THEREFROM.

NO.	REVISION	DATE	BY (CHK)

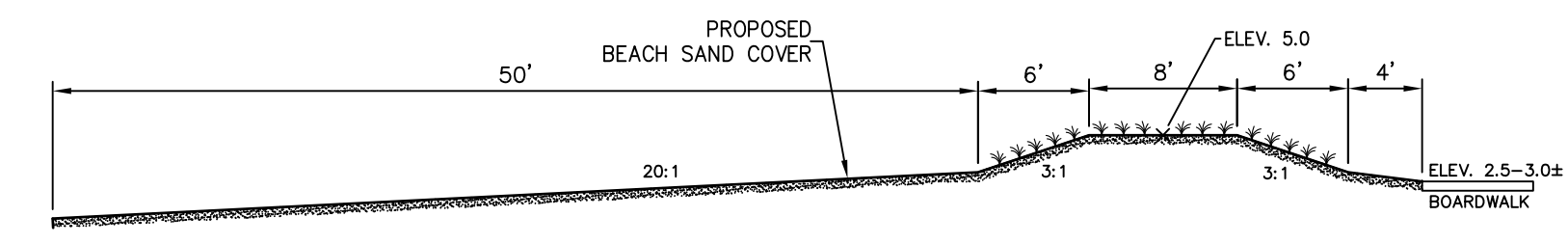
DETAILS
 BOROUGH OF OCEAN GATE
H.M.G.P. WAVE ENERGY DISSIPATION AND FLOOD MITIGATION
 BOROUGH OF OCEAN GATE OCEAN COUNTY NEW JERSEY

DRAWN BY: JK / PS DESIGN BY: PH CHECKED BY: PH SCALE: AS SHOWN
 DATE: 7 - 15 - 20 SHEET No.: 6 of 6
 JOB No.: 1522-U-029
 N:\DRAW\Ocean Gate\1522U029\U029-PLANS

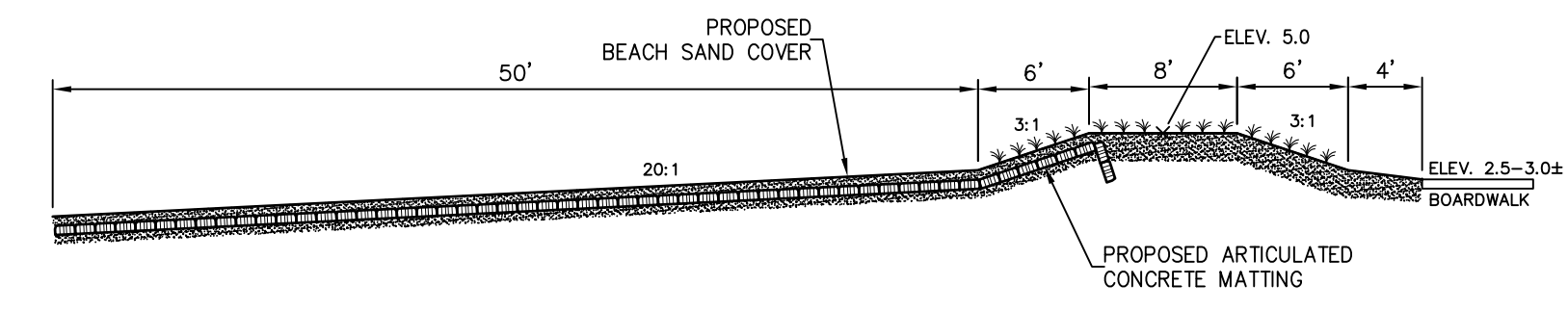


NOTE:
 1. ARMOR BLOCKS TO BE ARMORFLEX OPEN CELL BLOCK 70-T BY CONTECH OR APPROVED EQUAL.

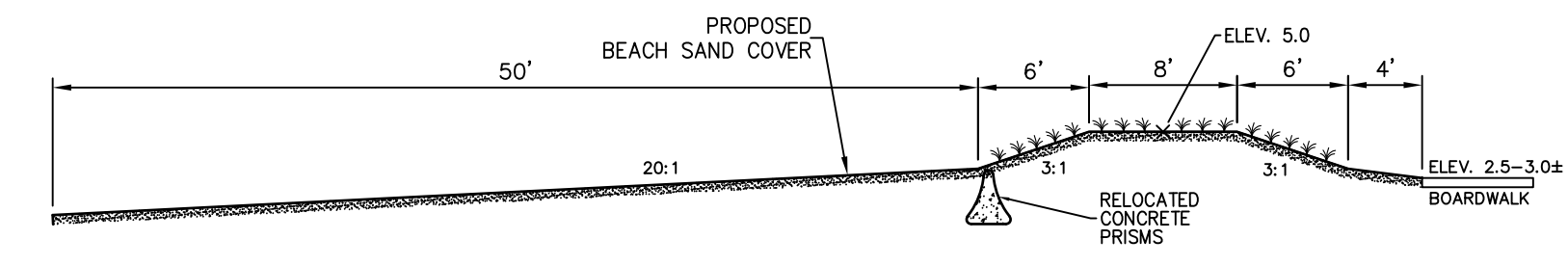
ARTICULATED MATTING DETAIL
 N.T.S.



TYPICAL DUNE SECTION
 SCALE: 1"=10'



TYPICAL DUNE SECTION "A"
 SCALE: 1"=10'



TYPICAL DUNE SECTION "B"
 SCALE: 1"=10'

N:\DRAW\Ocean Gate\1522U029\U029-PLANS.dwg 7/16/2020 10:24:17 AM