

To install Microsoft SQL Server Express Edition (Updated 09/23/2025)

1. Navigate to the link:

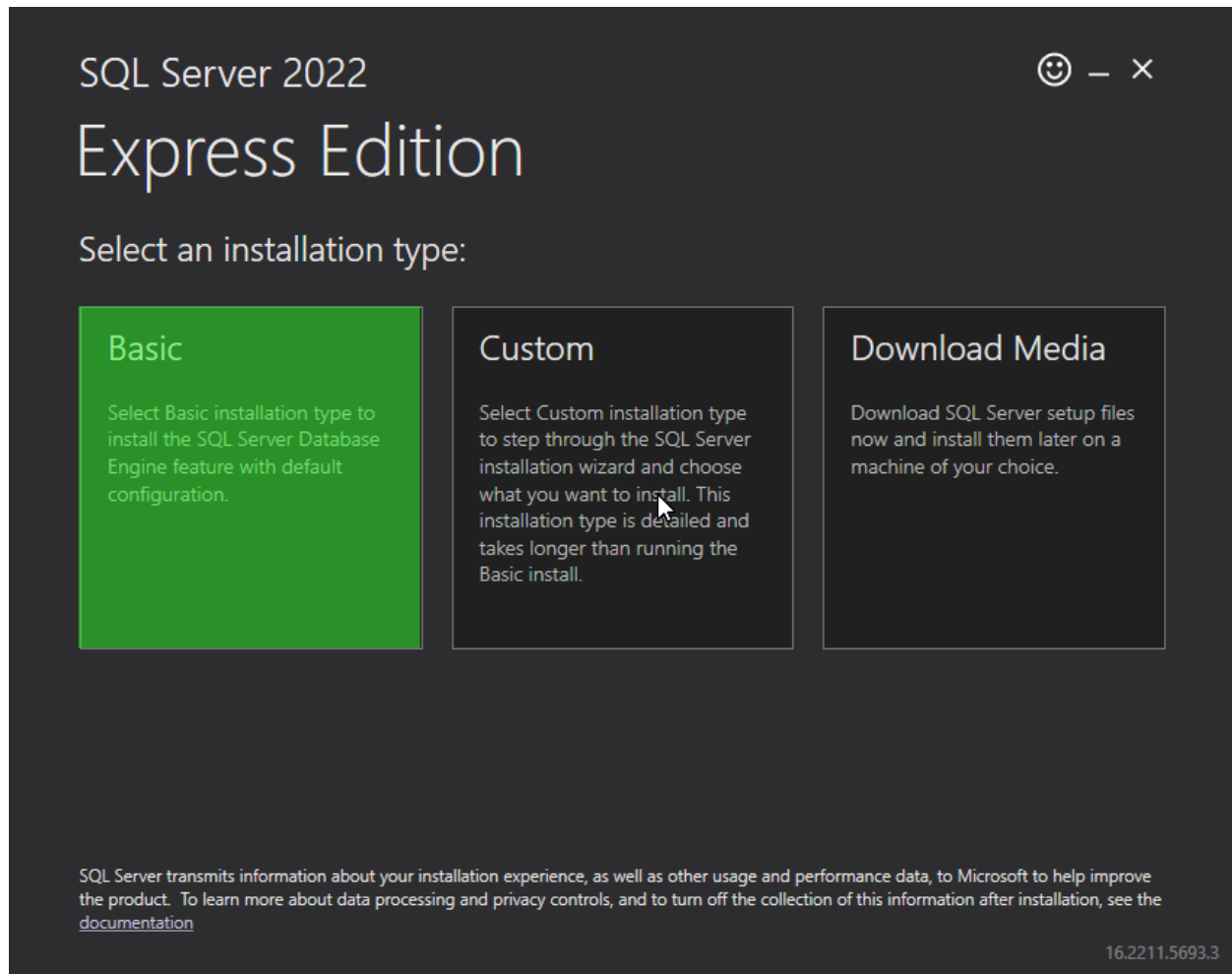
<https://go.microsoft.com/fwlink/p/?linkid=2216019&clcid=0x409&culture=en-us&country=us>



SQL2022-SSEI-Expr.
exe

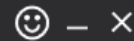
This will download the most recent copy of SQL Server Express Edition for you.

2. If a security warning pops up, click OK to proceed.



Select BASIC at this step.

SQL Server 2022



Express Edition

Microsoft SQL Server License Terms

YOU MUST ACCEPT THE SOFTWARE LICENSE TERMS. SEE BELOW. Please read the full license terms provided at (aka.ms/useterms).

DATA COLLECTION. The software may collect information about you and your use of the software and send that to Microsoft. Microsoft may use this information to provide services and improve Microsoft's products and services. Your opt-out rights, if any, are described in the product documentation. Some features in the software may enable collection of data from users of your applications that access or use the software. If you use these features to enable data collection in your applications, you must comply with applicable law, including getting any required user consent, and maintain a prominent privacy policy that accurately informs users about how you use, collect, and share their data. You can learn more about Microsoft's data collection and use in the product documentation and the Microsoft Privacy Statement at <https://go.microsoft.com/fwlink/?LinkId=521839>. You agree to comply with all applicable provisions of the Microsoft Privacy Statement including the SQL Server privacy supplement: <http://go.microsoft.com/fwlink/?linkid=868444>

MICROSOFT SOFTWARE LICENSE TERMS
MICROSOFT SQL SERVER

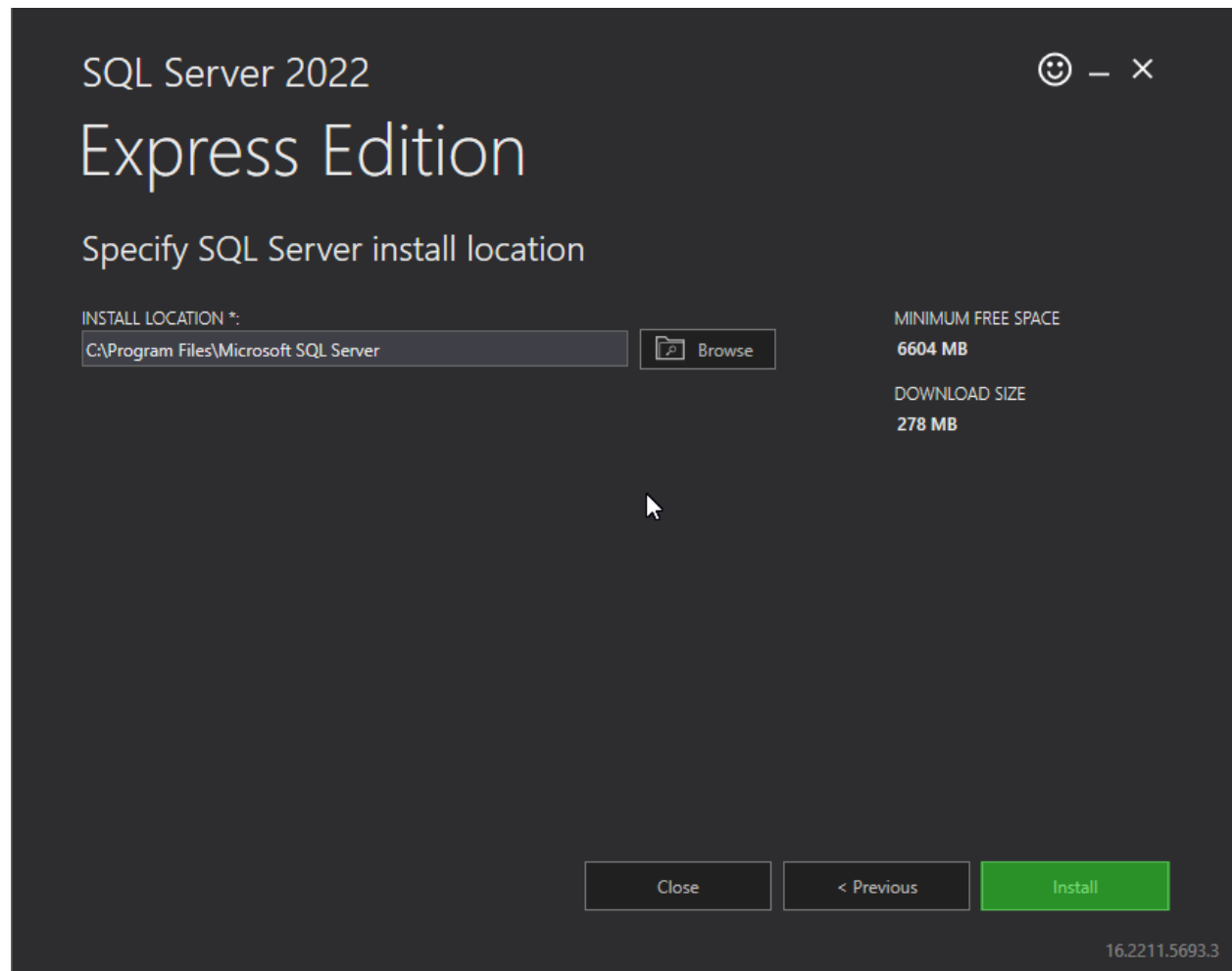
By clicking the "Accept" button, I acknowledge that I accept the License Terms and [Privacy Statement](#)

< Previous

Accept

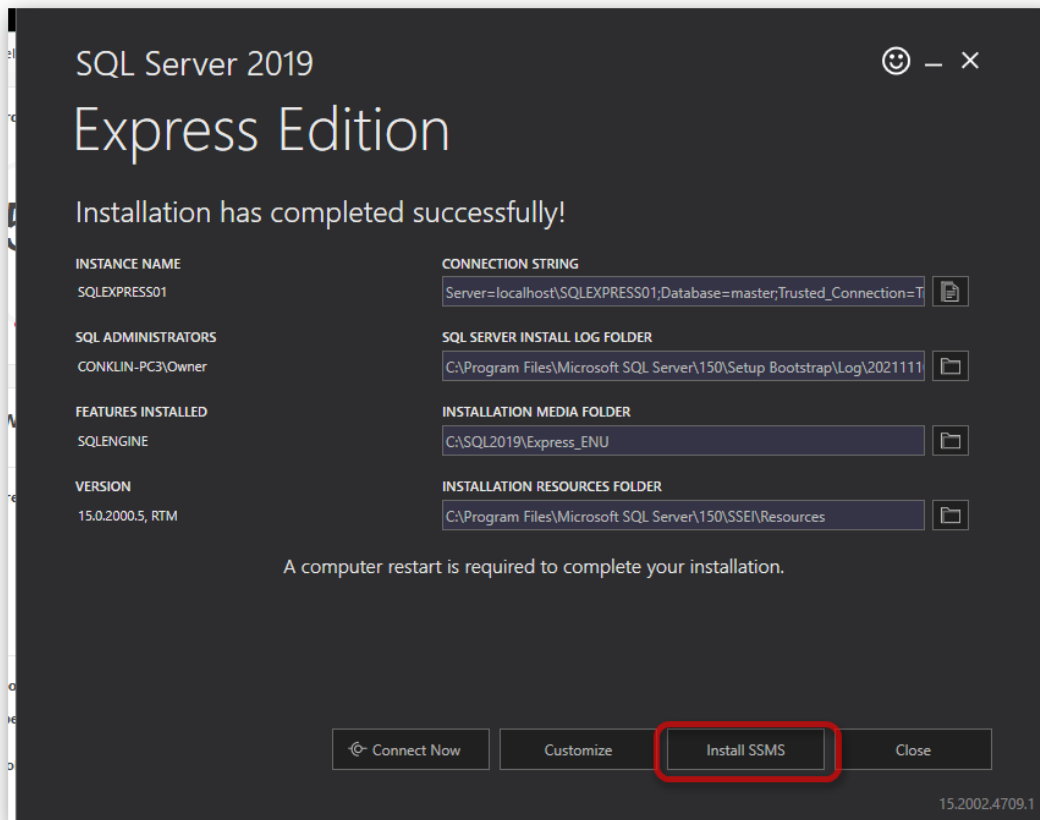
16.2211.5693.3

Click on the "Accept" button.




Click on the “Install” button.


Once the installation is completed you will see the window below. Click on the **Install SSMS** (SQL Server Management Studio) button to install the program we need to work with SQL Code.



Restart your computer before installing the next file. Download the file, but run it after you have rebooted.

Download SQL Server Management Studio (SSMS)


11/01/2021 • 7 minutes to read •  +33

Applies to:  SQL Server (all supported versions)  Azure SQL Database  Azure SQL Managed Instance  Azure Synapse Analytics

SQL Server Management Studio (SSMS) is an integrated environment for managing any SQL infrastructure, from SQL Server to Azure SQL Database. SSMS provides tools to configure, monitor, and administer instances of SQL Server and databases. Use SSMS to deploy, monitor, and upgrade the data-tier components used by your applications, and build queries and scripts.

Use SSMS to query, design, and manage your databases and data warehouses, wherever they are - on your local computer, or in the cloud.

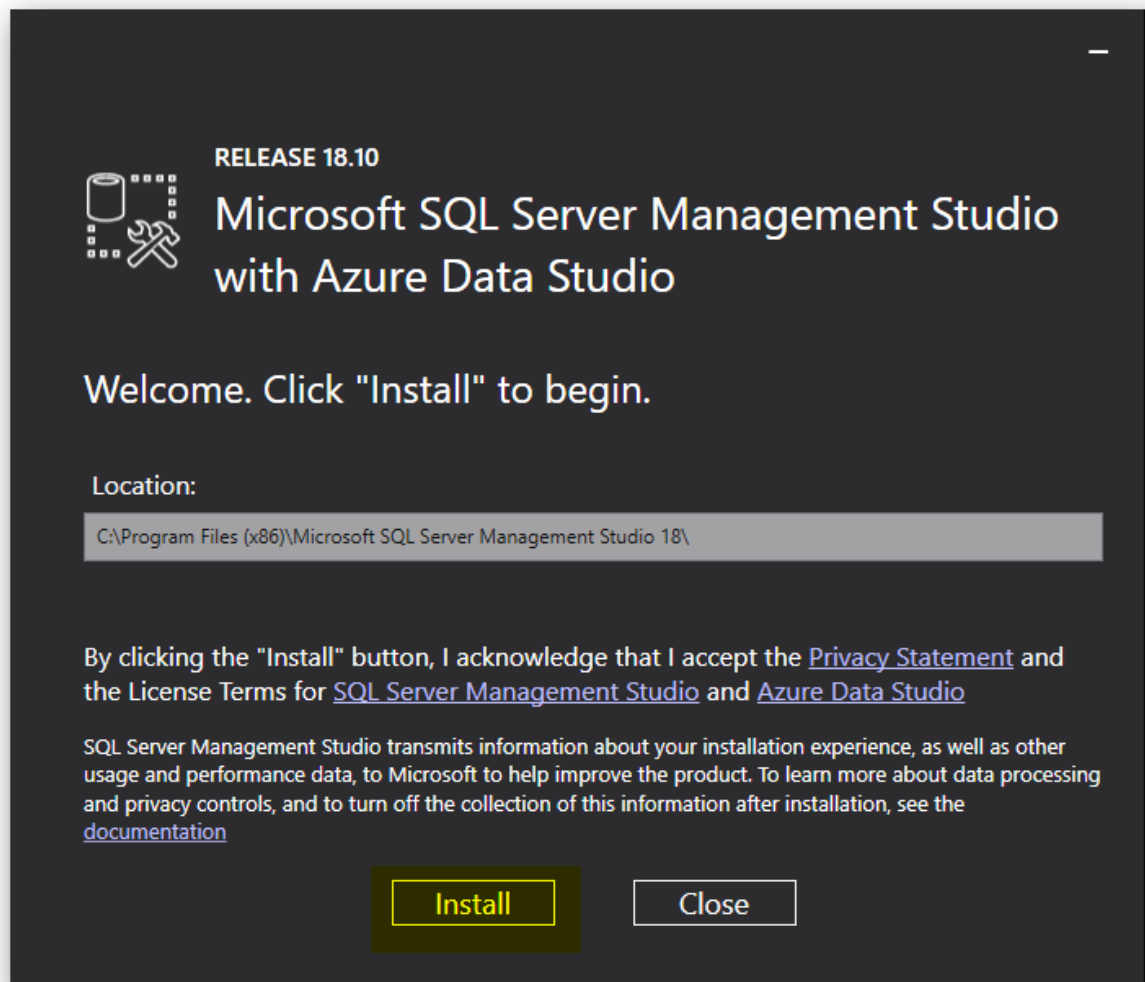
Download SSMS

 [Free Download for SQL Server Management Studio \(SSMS\) 18.10 !\[\]\(29658d981ebdf5edc259074cbf6110e0_img.jpg\)](#)

SSMS 18.10 is the latest general availability (GA) version. If you have a previous GA version of SSMS 18 installed, installing SSMS 18.10 upgrades it to 18.10.

- Release number: 18.10
- Build number: 15.0.18390.0
- Release date: October 5, 2021

Click on the link to download SSMS and run the install. (The version number may be different since Microsoft has posted newer, updated versions)

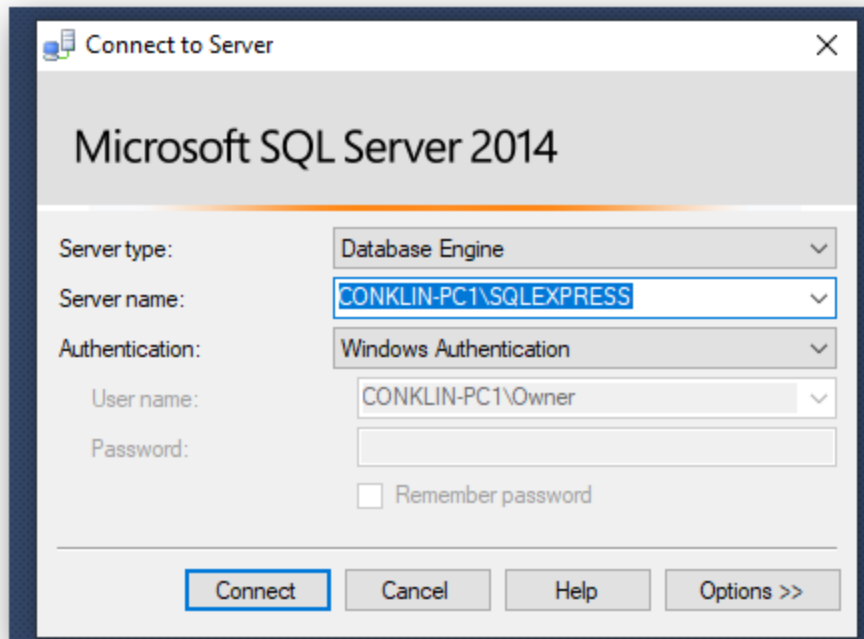


Click the Install button to load the program to your computer.

3. There will be several programs installed as part of this install. The one you really need to ensure you have is the Microsoft SQL Server Management Studio.



4. Once installed and when you open the application you should see a screen like this.



During the install, it should have created the server on your computer and should populate here; if not try clicking on the down arrow to see if it is listed. Simply click on the “Connect” button to connect. You will then be presented with the following window. ****If you don’t see a server name in the box simply type in your computer name which shows in the User Name field minus the \Owner. Replace that with \SQLEXPRESS**

The server’s name will be **your computer name** and SQLEXPRESS, as shown. (*This screenshot is showing my computer name, and that will be different for you.*)

