

# STAINLESS STEEL PRESSURE TANKS

PET-10N/MN - PET-30N/MN -PET-50N/MN (MAX. 7.0 BAR)



## FEATURES

- Stainless steel container, polished inside
- PET 10 (10 lt.), PET 30 (30 lt.), PET 50 (50 lt.)
- N: without pneumatic agitator
- M : with pneumatic agitator
- Second material connection (optional)
- No additional lubrication of drive required
- All models conform to ATEX

## Technical Data

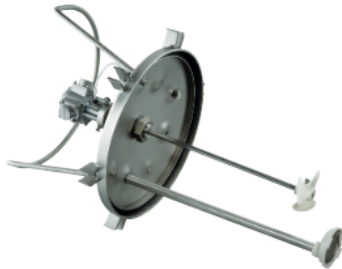
• Max.Working Pressure:	7 bar (100 psi)			
• Air inlet Joint:	G 1/4" M			
• Fluid outlet Joint:	G 3/8" M			
• Working Temperature:	5~40 °C			
• Mass:	PET 10 N	15.3 Kg	PET 10 MN	17.5 Kg
	PET 30 N	20.4 Kg	PET 30 MN	22.6 Kg
	PET 50 N	15.3 Kg	PET 50 MN	28.2 Kg
• Dimensions:	PET 10 N /-10 MN		540 x 330 mm	
	PET 30 N /-30 MN		710 x 415 mm	
	PET 50 N /-50 MN		810 x 470 mm	

## Order Information | PET-10 - PET-30 - PET-50

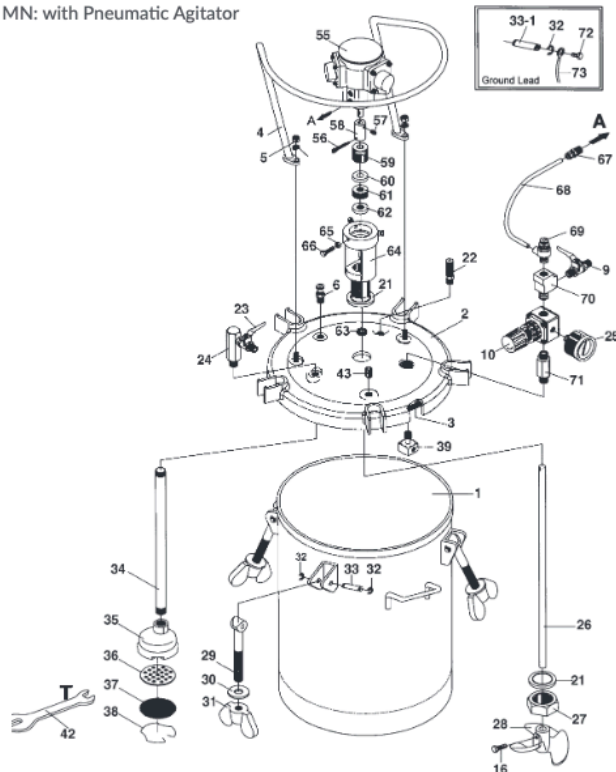
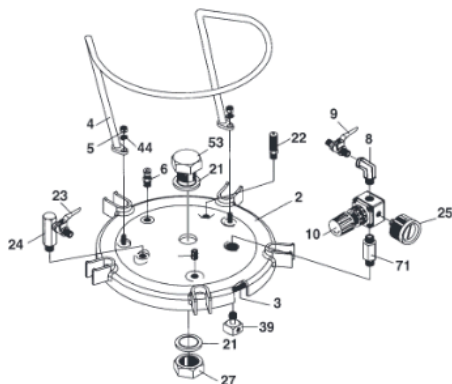
PET Series	10 lt.	30 lt.	50 lt.	€
PET-10N	14972600	-	-	1.702,20
PET-10MN with pneumatic agitator	14972620	-	-	2.267,70
PET-30N	-	14972630	-	2.327,20
PET-30MN with pneumatic agitator	-	14972650	-	2.886,60
PET-50N	-	-	14972660	2.755,70
PET-50MN with pneumatic agitator	-	-	14972680	3.321,20

MN: with Pneumatic Agitator

Pneumatic Agitator - AM-6B  
Operating pressure: 1+1.5 bar  
Air consumption: 15 Liter/min,  
Max. air inlet pressure: 7.0bar



N: without Pneumatic Agitator



## Paint pressure tank (Paint tank) PT series

For continuous painting of a single color, the paint pressure tank is very convenient.

It is available in both manual and automatic models equipped with a mixer to prevent the paint from settling.

High pressure paint tank is suitable for painting high viscosity paints or adhesives as max pressure is high and fluid outlet pressure is lower.

### Manual mixing

Type		For ordinary paint				
Model		PT-10D	PT-20D	PT-40D	PT-60D	PT-80D
Capacity(Max/Min)		10ℓ (8.4ℓ/2.6ℓ)	20ℓ (18.8ℓ/4.9ℓ)	40ℓ (35.6ℓ/10.7ℓ)	60ℓ (52.6ℓ/10.7ℓ)	80ℓ (68.8ℓ/10.9ℓ)
Max pressure		0.34MPa			0.18MPa	
Operation temperature		5~40℃				
Air inlet		G1/4B (PF1/4male)				
Air outlet		G1/4B (PF1/4male)				
Paint outlet		G3/8B (PF3/8male)×1			G3/8B (PF3/8male)×2	
Paint filter		60mesh				
L×W×H		315×315×547mm	310×390×652mm	460×465×700mm	500×465×885mm	500×465×1,045mm
Approx.mass		13kg	20kg	27kg	35kg	39kg
Model of Paint Regulator		RR-56B				
Options	Inner container	PTC-10W (6ℓ)	PTC-20W (14ℓ)	PTC-40W (28ℓ)	PTC-60W (46ℓ)	PTC-80W (62ℓ)
	Caster base	—	HG-6B	HG-5B		
	Paint intermediate filter	TF-71:100mesh				

### Automatic mixing

Type		For ordinary paint				
Model		PT-10DM	PT-20DM	PT-40DM	PT-60DM	PT-80DM
Capacity(Max/Min)		10ℓ (8.4ℓ/2.6ℓ)	20ℓ (18.8ℓ/4.9ℓ)	40ℓ (35.6ℓ/10.7ℓ)	60ℓ (52.6ℓ/10.7ℓ)	80ℓ (68.8ℓ/10.9ℓ)
Max pressure		0.34MPa		0.18MPa		
Operation temperature		5~40℃				
Air inlet		G1/4B (PF1/4male)				
Air outlet		G1/4B (PF1/4male)				
Paint outlet		G3/8B (PF3/8male)×1		G3/8B (PF3/8male)×2		
Paint filter		60mesh		70mesh		
L×W×H		315×315×470mm	310×390×590mm	460×465×648mm	500×465×828mm	500×465×1,000mm
Approx.mass		14kg	23kg	31kg	38kg	42kg
Model of Paint Regulator		RR-56B				
Model of Air motor		AM-5C	AM-3C			
Options	Inner container	PTC-10W (6ℓ)	PTC-20W (14ℓ)	PTC-40W (28ℓ)	PTC-60W (46ℓ)	PTC-80W (62ℓ)
	Paint intermediate filter	TF-71:100mesh				



water base paint	
PT-10DW	PT-20DW
10ℓ (8.4ℓ/2.6ℓ)	20ℓ (18.8ℓ/4.9ℓ)
0.34MPa	
5~40°C	
G1/4B (PF1/4male)	
G1/4B (PF1/4male)	
G3/8B (PF3/8male)×1	
70mesh	
315×315×547mm	310×390×652mm
13kg	20kg
RR-56B	
PTC-10W (6ℓ)	PTC-20W (14ℓ)
—	HG-6B
—	

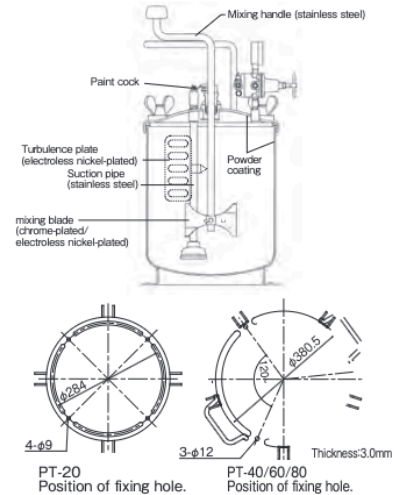
### Paint tank for water base paint

- ① Interior wall has been treated to resist rust where it contacts paint. Powder coating on interior wall and two-component urethane coating on inner surface of lid. Inner containers of stainless steel are also available.
- ② Mixing handle, suction pipe, and bolts which become submerged in paint are stainless steel.
- ③ Suction filter body, turbulence plate, support band, and fastening bands are electroless nickel-plate.
- ④ Manual mixing blade is chrome-plate and automatic mixing blade is electroless nickel-plated.

### Inner container

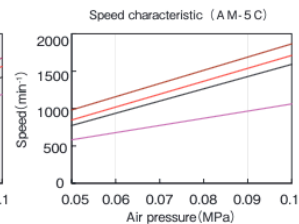
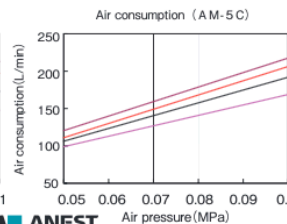
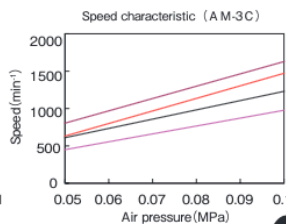
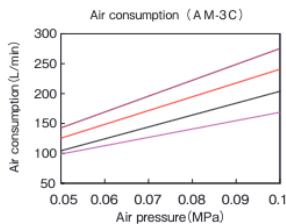
This container is used inside the paint pressure tank and is useful for work requiring frequent color change.

### Caster base



Inner container

water base paint				
PT-10DMW	PT-20DMW	PT-40DMW	PT-60DMW	PT-80DMW
10ℓ(8.4ℓ/2.6ℓ)	20ℓ(18.8ℓ/4.9ℓ)	40ℓ(35.6ℓ/10.7ℓ)	60ℓ(52.6ℓ/10.7ℓ)	80ℓ(68.8ℓ/10.9ℓ)
0.34MPa		0.18MPa		
5~40℃				
G1/4B (PF1/4male)				
G1/4B (PF1/4male)				
G3/8B (PF3/8male)×1		G3/8B (PF3/8male)×2		
70mesh				
315×315×470mm	310×390×590mm	460×465×648mm	500×465×828mm	500×465×1,000mm
14kg	23kg	31kg	38kg	42kg
RR-56B				
AM-5C	AM-3C			
PTC-10W (6ℓ)	PTC-20W (14ℓ)	PTC-40W (28ℓ)	PTC-60W (46ℓ)	PTC-80W (62ℓ)
—				



## Stainless Steel Pressure Tank (Paint tank type)

Model	COT-10	COT-20B	COT-10HL	COT-20BHL	COT-3M	COT-10M	COT-20BM	COT-10P
Actual usable capacity L	10	25	10	25	3	10	25	6
Mixing type	Not included		Manual mixing		Automatic mixing (air motored)			Not included
Air regulator	Attached							
Max pressure MPa	0.4(Safety Valve・Relief valve)							
Operation temperature ℃	5~40							
Liquid outlet	G3/8							
Air inlet	G1/4							
Outlet air connection	—							G1/4
Liquid filter	40				Not included	40		Not included
Internal surface	Mirror polished							—
Inner container L	PTC-10W (6) (Option)	PTC-20W (14) (Option)	Disabled		Disabled	PTC-10W (6) (Option)	PTC-20W (14) (Option)	Attached (Mirror polished)
Model of air motor	Not included				AM-7	AM-6B(		Not included
Level gauge	Not included		Attached		Not included			
Dimensions (L×W×H) mm	360×360×435	420×420×670	360×360×585	420×420×755	230×230×490	360×360×505	420×420×670	310×310×565
Mass kg	11.5	18.5	14	21	6.7	15	22	11.6



COT-3M



COT-10HL



COT-20B

In case of using in foreign countries besides Japan, make sure specs meet to regulations of each destination.

### Features



- COT-3M
- COT-10/10M/10HL
- COT-20B/20BM/20BHL

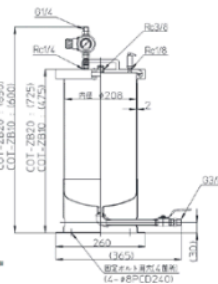
Cleaning efficiency is improved due to mirror polished interior surface.

## Stainless Steel Pressure Tank (Bottom-port type)



COT-ZB10

COT-ZB20



Model	COT-ZB10	COT-ZB20
Normal usable capacity L	10	17
Max working pressure MPa	0.5	
Operating temperature range °C	5 ~ 40	
Air inlet	G1/4(M)	
Fluid outlet	G3/8(M)	
Surface finishing	Mirror polished	
質量 kg	13	21

### ●Features

Suitable to apply high viscosity material.  
Air does not come into fluid passage even if removing lid when resupplying material. It does not need taking air out from fluid passage before restarting working.

### Usage

Adhesive:Applying adhesive for furniture assembly. Abrasive:Applying buffing abrasive.  
Sealant:Applying liquid gasket.  
Paint:For supplying tank for hardener of two component paint.

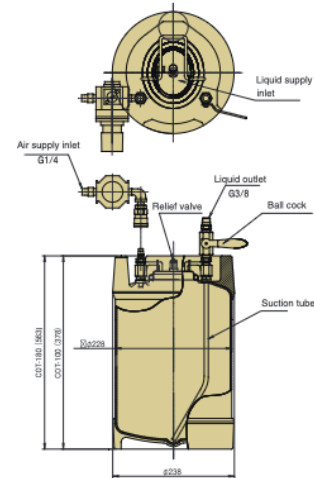
## Stainless Steel Pressure Tank (Vessel type)

Model	COT-100	COT-180
Capacity (In use)	10	18
Dimensions	height 378×φ238	height 563×φ238
Mass of main body	4.7	5.2
Tank material	SUS304	
Lid packing material	fluorine rubber (solvent-resistant)	
Air regulator	attached	
Maximum operating pressure	0.5	
Liquid outlet	G3/8 ( with ball valve	
Air Inlet	G1/4	



COT-100

Dimensional drawing



For oversea use, make sure that these products must be in accordance with the law and/or safety standard of the country.

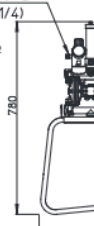
## Special Diaphragm Pump for Adhesive

Model	CGP-90EN
mPa·s Viscosity range	200~30,000
MPa Operating pressure range	0.15~0.6
mL Output/Cycle	50
min Max. cycle	200
L/min Max. output	10
kW Required compressor For pump	0.4~0.75

作動エア用入口  
Inlet for  
operating air  
G1/4(PF1/4)



スプレーガン用空気出口  
Air outlet  
for Spray gun  
G1/4(PF1/4)



ドレンホース  
Drain hose  
92.5  
(ドレンホース長さ)



### Features

- 1 Pulsation chamber Reducing fluctuation of flow caused by pulsation
- 2 Air regulator for gun attached  
Only one air line needed.
- 3 Suction pipe with camlock connection.  
Able to put suction pipe into 18 liter square can directly.

## Adhesive Application System

Spray gun for adhesive



PHF-620  
Fluorine liner hose

Stainless steel tank



Nitrogen gas filling

Nitrogen gas generator



It is possible to extend working life of moisture-curing adhesive using Nitrogen gas filling. Able to propose application equipment from atomization and supply of adhesive to factory air.