



Experts In Dental Suction

BaseVac Vacuum Systems deliver unrivaled suction performance for the most challenging vacuum applications.



Upgrading from a Wet Vac to a Dry Vac? Better Go BaseVac



www.basevacdental.com



905.828.6301



info@basevacdental.com

100% Oil & Water Free

Save on water costs. No oil changes or oily exhaust residue.

Industry Leading Suction Performance

Adjustable vacuum up to 25" Hg

Works with 1" Dia or Smaller Pipes

Replace wet vacuums without replacing in-floor plumbing.

5-Year Warranty

Unlimited hour hassle-free warranty.

Dry Vacuum Systems

100% Oil & Water Free | Industry Leading Suction 10"Hg-25"Hg | Rotary Vane Technology



Model #	2M4.25	1HD4.25	1HD4.40	2HD4.25	2HD4.40	3HD4.40	2SUR4.25	2SUR4.40
Max Users	2.5	2.5	4	5 (2x2.5)	8 (2x4)	12 (3x4)	5-8 Surgical Outlets	10-16 Surgical Outlets
Suction Power (Adjustable)	10-25 "Hg	10-25 "Hg	10-25 "Hg	10-25 "Hg	10-25 "Hg	10-25 "Hg	18-25 "Hg	18-25 "Hg
Power (Hp)	1.2 Hp	1.2 Hp	2 Hp	2 x 1.2 Hp	2 x 2 Hp	3 x 2 Hp	2 x 1.2 Hp	2 x 2.0 Hp
Power (Amps)	6.9 A	6.9 A	10.5 A	13.8 A (2 x 6.9A)	21 A (2 x 10.5A)	31.5A (3 x 10.5A)	13.8 A (2 x 6.9A)	21 A (2 x 10.5A)
Electrical* (Min - Max)	230V, 1 Phase (207-253V)	230V, 1 Phase (207-253V)	230V, 1 Phase (207-253V)	230V, 1 Phase (207-253V)	230V, 1 Phase (207-253V)	230V, 1 Phase (207-253V)	230V, 1 Phase (207-253V)	230V, 1 Phase (207-253V)
Noise Level	67 dBA	67 dBA	69 dBA	70 dBA	72 dBA	75 dBA	70 dBA	72 dBA
Dimensions	L 17" x W 17" x H 39"	L 28" x W 18" x H 19"	L 28" x W 18" x H 19"	L 28" x W 18" x H 38"	L 28" x W 18" x H 38"	L 28" x W 18" x H 72"	L 35" x W 25" x H 36"	L 35" x W 25" x H 36"
Weight (lbs)	98 lbs	94 lbs	121 lbs	2 x 94 lbs	2 x 121 lbs	3 x 121 lbs	275 lbs	295 lbs
Air Water Separator	Built-In	Included	Included	Included	Included	Included	N/A	N/A
Min Vacuum Lines	1/2"	1/2"	1/2"	1/2"	1/2"	1/2"	1/2"	1/2"
# of Motors	1	1	1	2	2	3	2	2
Upgradeable	No	Yes	Yes	Yes	Yes	Yes	No	No
Buck-Boosts (Optional)	1	1	1	2	2	3	2	2

Oil-Free Compressors

Operating PSI: 70-100 | Oil-less Air Compressors | PERMA-DRY Air Purification | Quiet Operation



Model #	S0.75	S1.5	S2.0	S1.5E & S2.0E	D1.5	D2.0
Users	1.5	3	4	Same as Non-Enclosure Model	6	8
Operatories	2	3-4	3-5	Same as Non-Enclosure Model	5-7	8-10
CFM @ 80PSI	3.1	5	6.5	Same as Non-Enclosure Model	10	14
Power (hp)	0.75 hp	1.5 hp	2 hp	Same as Non-Enclosure Model	2 x 1.5 hp	2 x 2 hp
Power (Amps)	7.8 A	8.5 A	9 A	Same as Non-Enclosure Model	17 A	18 A
Electrical	115V / 1 / 60Hz	220V / 1 / 60Hz	220V / 1 / 60Hz	Same as Non-Enclosure Model	220V / 1 / 60Hz	220V / 1 / 60Hz
Dimensions	L 26" x W 20" x H 25"	L 26" x W 24" x H 30"	L 26" x W 24" x H 30"	L 29" x W 23" x H 32"	L 35" x W 24" x H 36"	L 35" x W 24" x H 36"
Noise Level	70 dBA	72 dBA	74 dBA	54 dBA	74 dBA	74 dBA
Weight (lbs)	110 lbs	132 lbs	154 lbs	Varies	231 lbs	242 lbs
Tank	6 Gal.	13 Gal.	13 Gal.	13 Gal.	20 Gal.	20 Gal.
Silent Option (-20 dBA)	Yes	Yes	Yes	N/A	No	No

Equipment Room Packages

Easy Installation | Industry Leading Suction | 5-Year Warranty



4 User

- 1HD4.25 Vacuum
- S2.0 Compressor
- Solmetex Hg5
- Remote Switch
- Buck Boost Transformer



4 User+

- 1HD4.40 Vacuum
- D1.5 Compressor
- Solmetex Hg5
- Remote Switch
- Buck Boost Transformer



6 User

- 2HD4.25 Vacuum
- D1.5 Compressor
- Solmetex Hg5
- Remote Switch
- Buck Boost Transformers



6+ User

- 2HD4.40 Vacuum
- D1.5 Compressor
- Solmetex Hg5
- Remote Switch
- Buck Boost Transformers



8 User

- 2HD4.40 Vacuum
- D2.0 Compressor
- Solmetex Hg5
- Remote Switch
- Buck Boost Transformers

BaseVac Testimonials

BaseVac is trusted by top professionals across North America



BaseVac offered a unique design for my specific application. Now thanks to their team, our suction is stronger, more consistent, and more efficient than it has ever been before."

Dr. Anna Fromzel

Stamford Family Dental
Stamford, CT



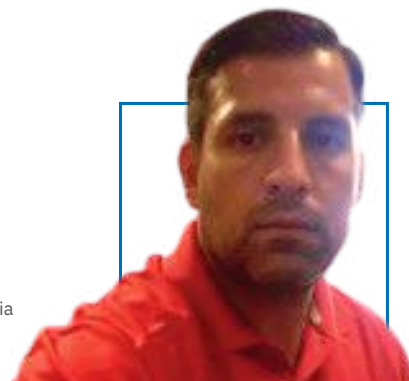
Dr. Ali Miamee

Reston Family Dental
Reston, VA

"The four years of powerful vacuum and air we received is why I only trust BaseVac Dental systems in my mechanical room."

Amir Schinnar

Director of Facilities
University of Pennsylvania



"Honestly they are great. Up to this point, I have had zero issues. They work. They do the job. We've had alternatives but so far, BaseVac has outperformed all of those."

**Ask us about including a BaseVac system
in your ultimate mechanical room!**



REPAIR AND SERVICES

www.mmerepair.com

1-877-956-0444 | sales@mmerepair.com