

# **KICK-OFF MEETING FOR FIRE MOU PARTNERSHIP**

---

**February 2 – 3, 2016**

## **MEETING SUMMARY**

*Prepared by the Center for Collaborative Policy,  
California State University, Sacramento*

## Table of Contents

### Press Conference / Preparation Meeting for Fire MOU Partnership

|                        |   |
|------------------------|---|
| Opening Remarks.....   | 2 |
| Press Conference ..... | 3 |

### Kick-Off Meeting for Fire MOU Partnership

#### Day 1

|                                      |   |
|--------------------------------------|---|
| Opening Remarks.....                 | 3 |
| Implementation Issues.....           | 3 |
| The MOU Partnership Work Groups..... | 4 |
| Steering Committee .....             | 5 |
| Wrap-Up.....                         | 6 |

#### Day 2

|                                |    |
|--------------------------------|----|
| Opening Remarks.....           | 7  |
| Operating Protocols .....      | 8  |
| Monitoring and Reporting ..... | 10 |
| Work Group Action Plans.....   | 10 |
| Wrap-Up and Next Steps .....   | 11 |

### List of Appendices:

- A - List of Attendees
- B - Impediments to Prescribed Fire Use
- C - Fire MOU Group Functions and Suggested Governance Structure (Day 1)
- D - Outreach Work Group – Charge & Priority Tasks
- E - Policy Work Group – Charge & Priority Tasks
- F - Capacity Work Group – Charge & Priority Tasks
- G - Additional Possible Work Group Members
- H - Steering Committee – Charge & Priority Tasks
- I - Fire MOU Revised Governance Structure (Day 2)

# Press Conference / Preparation Meeting for Fire MOU Partnership

**Meeting Objective:** Prepare for, and conduct, a telephonic press conference on the Partnership.

**Twitter Information:** #RxFire; #CAWater; #Forests; #Sierra; #Collaboration @SacState; @Wilderness; @R5\_Fire\_News; @CAL\_FIRE; @FireAviationNPS; @CAsWatershed; @USFS\_r5; @CALFIRE\_Chief; @Nature\_Fire; @SierraClubCA

## Opening Remarks

Randy Moore (Regional Forester, US Forest Service [USFS]), Ken Pimlott (Director, CA Department of Forestry and Fire Protection [CAL FIRE]), and Craig Thomas (Conservation Director, Sierra Forest Legacy [SFL]) offered opening remarks to kick off the meeting, and then all participants had an opportunity to add insights. Collectively, they observed that:

- “Something is changing,” in the sense that key parties are coming into alignment to get traction on the goal of increased use of fire to achieve ecological and other management goals.
- Keys to success include:
  - Holding a very clear intent as to use of the “right fire” in the “right place” and at the “right time”; and
  - Achieving consistency across partner efforts (or if we differ, do so with an understanding of where and why we differ).
- If we engage in effective collaboration on this issue, we eventually should be able to pursue this objective as a way of doing business – i.e., in maintenance mode – and serve as a model for others working on similar challenges.
- Challenges include:
  - Gaining community support/understanding (especially regarding natural ignitions)
  - Messaging (safety, public resources)
  - Potential disagreements among the partners (talk -- early!)
  - Leveraging our commonalities
  - Enlisting the cooperation of private landowners
  - Getting our respective organizations shifted and aligned on increasing use of fire
  - The magnitude of the acreage needing attention

## Press Conference

MOU partner representatives and press and public affairs personnel for USFS and CAL FIRE prepared for and conducted a telephonic press conference on the kick-off of the Fire MOU Partnership. Afterwards, they reflected on the press conference, noting that they stayed on message, and responses from listeners were on point. Six reporters were on the conference line and asked only a couple of questions. One question pertained to whether the recent major fires spurred the MOU formation; an MOU partner representative had responded that the MOU Partnership has been in the works for many years, but the recent fires underscore the necessity for the Partnership.

---

# Kick-Off Meeting for the Fire MOU Partnership

## — Day 1 —

**Meeting Objective:** Reach agreement on initial elements of the Memorandum of Understanding (MOU) Implementation Plan (e.g., Steering Committee composition, Work Groups needed, timeline, operating protocols, communications)

**Meeting Attendees:** Please see Appendix A.

## Opening Remarks

Participants shared hopes and concerns with respect to the MOU kick-off meeting, such as:

- Aligned outreach and communication is an integral pillar for the MOU Partnership. Tailoring a given message to suit our various organizations' missions is fine, but it is crucial that all of the partners support the same overarching messages.
- During this meeting, participants should identify who else should be at the table and work towards expanding the Partnership.

## Implementation Issues

Dr. Marci DuPraw (Senior Facilitator, Center for Collaborative Policy [CCP]) reviewed the agreed-upon functions and strategies in the MOU, as follows:

1. Stakeholder Engagement
2. Minimize Barriers to Fire Use through:
  - a. Improved smoke management coordination
  - b. Public education and outreach
3. Increased Fire Use Capacity through Expanded:
  - a. Training Opportunities
  - b. Resource Sharing

## The MOU Partnership Work Groups

In order to determine the number and focus of Work Groups needed to implement the MOU, Dr. DuPraw asked participants to identify issues and challenges that will need to be addressed during implementation. One attendee provided a list of nine major impediments identified by the National Coalition of Prescribed Fire Councils, Inc. The group then listed seven additional issues. The combined list can be found in Appendix B.

Participants identified linkages among the listed issues to consolidate topics together under four major categories – 1) outreach and education; 2) policy; 3) capacity; and 4) technical information. Participants ultimately decided to form three Work Groups, mirroring categories 1-3. They agreed that the whole effort must be informed by scientific and technical information and expertise (category 4), but their intention is to draw upon various experts as needed rather than establishing a formal technical advisory committee at this time; participants thought of this concept as including a “bull pen” of available technical experts as well as a library or archive of relevant scientific literature. Appendix C lists the functions of each group and diagrams this initial governance structure (governance structure was somewhat revised on Day 2).

Other themes in the discussion included:

- **Ubiquitous themes and principles.** Certain issues were deemed to be more pervasive through the whole MOU effort (e.g., successful implementation of the MOU requires major agency culture shifts).
  - The group supported **science-based management decisions** and **adaptive management** as core principles for the MOU.
- **Building the Story.** Work groups will help create a narrative about past practices that lead to the current need for managed fire on the landscape, current conditions, the desired future condition, and the opportunities and constraints associated with achieving that vision (The group discussed this issue in greater depth on Day 2).
- **Evaluating Policies.** Work groups may assess proposed policies and engage in related educational efforts related to achieving the purpose of the MOU. However, some of the partners may be unable to offer formal/public recommendations or endorsements of particular policies for legal reasons.
- **Feedback Loops and Reporting.** Feedback loops should be explicitly integrated into the implementation effort to help ensure accountability and continuous progress toward the MOU’s objectives. Reporting will also help keep high-level members of agencies/organizations aware of the progress in implementing the MOU. The Tree Mortality Task Force (TMTF) reporting structure could serve as a template.
- **MOU’s Scope.** All signatories must support MOU efforts. We should focus our initial efforts on immediate and achievable actions to demonstrate progress. We may choose to do some things that are not explicitly stated in the MOU, as long as they are consistent with the framework established by the MOU.

- **Information Needed From Technical Experts:**
  - Landscape vulnerability to fire exclusion
  - Historical fire regimes (e.g., fire frequency, number of acres)

The group agreed on the following as it relates to the MOU Partnership Work Groups (Appendices D through G provide the information listed below for each Work Group):

- Charge/range of topics that each of the three Work Groups should address
- Priority actions for each Work Group
- Possible members for each Work Group
- Work Group Co-Leads (one representative each from a non-governmental organization (NGO), State agency, and Federal agency) and next steps for the Co-Leads
- Additional candidates to recruit onto Work Groups for whom it is unclear at this time which Work Group would be the best fit (Appendix G)

## **Steering Committee**

*(Discussed on Day 1 and Day 2)*

### Charge

The group charged the Steering Committee with carrying out the will of the Partnership.

They agreed that this should include:

- Managing the logistics needed to sustain the MOU Partnership
- Managing and directing where the group is going and its internal priorities (e.g., maintaining the focus on the MOU objectives (vs. individual/organizational agendas) and setting priorities for the Work Groups)
- Coordinating development of the Partnership’s messaging and media efforts

### Membership

Participants agreed that the Steering Committee should have a composition that reflected a 1:1 ratio of agency to NGO representatives, and there should be one agency Co-Chair and one NGO Co-Chair. As shown below, they agreed on: a) the four agencies and four NGOs that should have representation on the Steering Committee; the eight specific individuals who will represent each of those organizations; and the two Co-Chairs:

#### **Agencies**

- US Forest Service – Rob Griffith
- National Park Service (NPS) – Robin Wills
- CAL FIRE – Helge Eng
- Sierra Nevada Conservancy (SNC) – Jim Branham

#### **NGOs**

- Sierra Forest Legacy – Craig Thomas
- The Wilderness Society (TWS) – Stan Van Velsor
- The Nature Conservancy (TNC) – Ed Smith
- Center of Biological Diversity (CBD) – Justin Augustine

**Steering Committee Co-Chairs:** Craig Thomas (SFL) and Rob Griffith (USFS)

Appendix H outlines the Steering Committee's charge, tasks, leadership, membership, and next steps.

### **Wrap-Up**

Craig Thomas thanked attendees for a productive first day.

## – Day 2 –

### Opening Remarks

Marci DuPraw reviewed the agenda and loose ends identified in Day 1 that would need to be addressed during Day 2. She then invited participants to share general questions, comments, and/or suggestions pertaining to the Fire MOU Partnership. Highlights of the discussion were as follows:

- **Considerations as the MOU partners Move Forward.** A few participants expressed that the group should:
  - Incorporate a sense of urgency into the action plans to maintain momentum for action and keep the media and the public’s attention and awareness.
  - Remember that each MOU partner organization will be contributing to carrying out the MOU objectives, but our impact will be strongest where we work in concert with one another
  - Show tangible progress in 9 months
- **Articulating partners’ Shared Goal With Respect to Increased Use of Fire – e.g., How *Much More*?** Participants discussed what they should aim for in terms of the amount of increased use of fire, both so that have a unified message for use with external parties and so that they can measure their progress. Brainstormed options included:
  - Aim for a percent increase (of acres burned) over a certain number of years
  - Aim for a certain number of ecologically-significant acres burned
    - Identify the number of acres in a particular area that needs fire
    - ½ - 1 million ecologically-significant acres (via natural ignition and prescribed) statewide
    - Are the target numbers realistic?
  - Describe desired ecological outcomes
  - Address the emissions debt – 3.9 million acres backlog
  - Affect policy change (Evaluate, develop supporting materials; NOT to develop recommendations or positions as MOU)
  - Advance outreach and communication
    - Indicators/metrics: positive media response, MOU partners, number of contacts on outreach or networking lists, etc.
  - Increase funding sources
  - Identify both short term and long term goals

The group recognized that each of their respective organizations probably have its own numeric goal, and it may not be necessary or advisable to try to get them to agree on that number. Instead, partners agreed that the Steering Committee should develop a background paper describing the need for fire on the landscape.

- The Steering Committee Co-Chairs should first gather the background information to describe the ecological need; the public health and safety needs will then need to be added. Entities/programs such as the California



Fire Science Consortium and CAL FIRE's Fire and Resource Assessment Program may have useful information.

- Once the MOU Partnership has the story, scientists can provide the data that give the story greater specificity and emphasis.
- The story needs to be personable and heartfelt to capture people's attention.
- A consistent challenge is that some agencies are reluctant to report a fire's ecological benefits that also caused major damages.

## Operating Protocols

The group agreed to the following steps to develop the operating protocols/charter:

### Decision Making

- **Draft Charter.** Sue Britting (SFL) will develop the draft charter by tailoring the Dinkey Collaborative Forest Landscape Restoration Project's Charter to reflect the purposes of the MOU and this meeting's discussions.
- **How Identify Common Ground?** MOU partners should reach consensus on positions regarding how the partners will overcome barriers and the content of supporting materials such as case statements.
  - NOTE - MOU Partnership will not endorse or recommend policies (MOU partners can advocate independently of the MOU)
- **What if We Differ?** Aim for consensus on key issues.
  - All MOU signatories should approve primary messages
- **Dispute Resolution Procedure.** Steering Committee Co-Chairs will draft a procedure based on the meeting summary and draft charter; develop/propose process recommendations to Steering Committee. If a conflict arises, the Co-Chairs will seek to facilitate problem-solving efforts. The Dinkey charter may contain a procedure that would be suitable if those initial efforts fail. As a last resort, there is a termination clause in the MOU enabling any partner to drop out of the Partnership.
- **Changes to the MOU.** If a partner wants to propose a change to the MOU (e.g., expand the MOU's scope), partners will discuss it. MOU changes must be supported by all MOU signatories.

### Adding partners

- **Must Support The MOU's Main Goal.** Prospective partners must support increased use of fire and be aligned with MOU purposes. If the party can endorse the MOU's purpose, they are "in" as a partner.
- **MOU Keeper.** USFS is the keeper of the MOU document and will manage the process for adding/removing partners (e.g., getting the signature, date, and contact information; sending the contact package; telling the rest of the partners)
  - Refer potential new partners to Rob Griffith (USFS) to join
- **Online/Automatic Form.** Consider an online endorsement form (where the person will automatically be added to the distribution list for receiving Partnership news).

- **Non-Signatories – Cooperators Group.** Participants agreed to form a Cooperators Group for key parties who cannot or choose not to explicitly endorse increased use of fire but who can:
  - Serve as a sounding board for the Partnership
  - Be available to confer one-on-one with MOU partners or as a group
  - Meet in person or virtually to assist the partners in achieving the MOU objectives

Appendix I reflects this revision to the MOU governance structure diagram in Appendix C.

### Other Key Roles

- **Work Group Procedures.** Who schedules, plans, runs, and documents meetings?
  - Work Group Co-Leads – plan, run, and document Work Group meetings
  - Work Groups should determine their own meeting frequency
    - Meetings should be more frequent than quarterly
    - Meetings should align with Steering Committee’s schedule
- **Steering Committee Procedures.** Who schedules, plans, runs, and documents meetings?
  - Steering Committee Co-Chairs will develop a proposed approach for carrying out these functions
  - Steering Committee will meeting quarterly (two meetings in person, two via conference call)
- **All MOU partners.** All MOU partners should initially meet twice a year in person.
  - All-partner meetings should occur on the same day as -- or close to -- Steering Committee in-person meetings (can be separate meetings to retain a manageable group size for decision-making purposes)
- **Replacement Procedure.** Term limits?
  - Steering Committee Co-Chairs—partners will either elect or re-affirm Steering Committee Co-Chairs annually by two-thirds vote of Steering Committee members
  - Work Group Co-Leads do not need a formal replacement procedure
  - E-mail voting is okay
  - Establish proxy process (e.g., identify alternates)
- **Facilitation Support.** A professional facilitator would help the initial year of the Fire MOU efforts.

### Interacting with the Media

- **Standard Messages.** The MOU partners (through the Steering Committee) can develop standard affirmative messages. Once approved, you can use without undergoing the vetting process.
- **Use Disclaimer.** Be clear you are not speaking for the MOU partners unless you have explicitly received approval from the Steering Committee to do so.
- **Emergency Media Questions.** Direct emergency media questions to individual organization’s press contacts.

## Monitoring and Reporting

Participants agreed to the following:

- **Fire MOU website.** The group would like to establish an internal website to serve as a portal for sharing information among MOU partners. SFL is willing to house the domain, create the initial structure, and conduct minimal maintenance (e.g., managing access) without partner compensation.<sup>1</sup> The portal might contain:
  - Meeting schedules via Google Calendar
  - Folders for MOU founding documents, the Steering Committee, each Work Group (progress reports), Science Library, and Outreach documents
- **Measuring progress.** Work groups will propose appropriate metrics for measuring progress on their key action items to the Steering Committee for review/approval.
- **Reporting process.** Work groups could upload progress reports to the MOU portal rather than through e-mail. The Steering Committee will review and discuss Work Groups' progress at Steering Committee meetings.

## Work Group Action Plans

Participants agreed that Work Groups should use the Work Group charge and priority actions identified by the Steering Committee (Appendices D through F) to develop their respective contributions to a 2-year action plan. The work plan should have both short and long term actions (the charge may suffice as the long-term actions). A participant suggested action plans should provide a medium-level of detail for tasks and avoid over-specificity. Another participant noted that if a Work Group completes its action plan ahead of schedule, the group should proceed with other tasks embodied in its charge. Participants outlined the topics that they would like Work Group Co-Leads to cover in the start-up call for each Work Group, as follows:

### Work Group 1<sup>st</sup> Call Agenda Items

- A. Review/add member organizations and 1 or more tasks
- B. Identify how they will measure progress on tasks, and who will do this
- C. Develop a mechanism for reporting the Work Group's progress to the Steering Committee and MOU partners
- D. Develop a meeting schedule (aligned with the Steering Committee's meeting schedule)
- E. Agree on who will document Work Group discussions (e.g., 1 Co-Lead facilitates, and the other Co-Lead documents the meeting)
- F. Identify any support needs or resources (make this a standing agenda item)

---

<sup>1</sup> MOU currently does not authorize exchange of funds between MOU partners; the group can create a new agreement if needed.

## Wrap-Up and Next Steps

### Fire MOU Next Steps

#### Individual Tasks

1. Sue Britting (SFL) will develop the draft charter based on Feb 2-3 discussions and the Dinkey charter template. Ms. Britting will send it to the Steering Committee for feedback before the June meeting.
2. Nick Goulette (Northern California Prescribed Fire Council) will send the TMTF work plan to Marci DuPraw (CCP) to serve as a template for Work Groups' action plans.
  - a. CCP will disseminate the TMTF work plan to the Work Group Co-Leads.
3. CCP will confer with USFS to determine if CCP can provide facilitation services for future Fire MOU efforts under CCP's current in-kind commitment to the USFS.

#### Work Groups

1. Refer to Appendices D through F for tasks specific to each Work Group.
2. Work group Co-Leads will:
  - a. Recruit their Work Group members
    - i. Refer to Appendix G for additional possible Work Group members
  - b. Schedule a conference call
  - c. Within 3 months, send proposed actions (both short and long term) to the Steering Committee to review and package into a draft 2-year action plan for distribution to the full MOU Partnership group.

#### Steering Committee

1. Refer to Appendix H for tasks specific to the Steering Committee.
2. Steering Committee Co-Chairs will develop a background paper as soon as possible articulating the need for increased use of fire to achieve ecological and other management objectives.
3. The Steering Committee and the full MOU Partnership (including any new partners) will meet in early June.

#### MOU partners

1. Each MOU partner should come to the June meeting with information on:
  - a. What does the land in my region need with respect to use of fire to achieve ecological and other management objectives?
  - b. What is my agency/organization currently doing that supports the MOU objectives?
  - c. How can we be better understand the gap between current efforts and what the landscape needs (leveraging existing efforts to minimize barriers and increase capacity)?
  - d. How do we measure/report progress?

#### Announcements

- Nick Goulette encouraged participants to attend and spread the word about the Northern California Prescribed Fire's annual meeting March 24-25 in Lake County. Approximately 100-200 people are expected to attend, and many of the topics are relevant to the Fire MOU.

### Closing Comments

Craig Thomas and Rob Griffith thanked participants for their time and dedication in working out the first steps for the Fire MOU Partnership. The Partnership reflects many years of hard work to assemble such a diverse and comprehensive group in one room. Mr. Thomas emphasized the need to keep the Fire MOU in the limelight and maintain the group's momentum.

## Appendix A

### Attendance Day 1

| FIRST         | LAST       | AFFILIATION  |
|---------------|------------|--|
| 1. Justin     | Augustine  | Center for Biological Diversity                    |
| 2. Liz        | Berger     | US Forest Service                                  |
| 3. Daniel     | Berlant    | CAL FIRE   |
| 4. Jerry      | Bird       | US Forest Service                                  |
| 5. Jim        | Branham    | Sierra Nevada Conservancy                          |
| 6. Susan      | Britting   | Sierra Forest Legacy                               |
| 7. Helge      | Eng        | CAL FIRE   |
| 8. Nic        | Enstice    | Sierra Nevada Conservancy                          |
| 9. Pamela     | Flick      | Southern Sierra Prescribed Fire Council            |
| 10. Stanton   | Florea     | US Forest Service                                  |
| 11. Stephanie | Gomes      | US Forest Service                                  |
| 12. Nick      | Goulette   | Northern CA Prescribed Fire Council                |
| 13. Rob       | Griffith   | US Forest Service                                  |
| 14. Matt      | Johnson    | National Park Service                              |
| 15. Brittney  | Kovich     | Sierra Nevada Conservancy                          |
| 16. Shawna    | Legarza    | US Forest Service, Pacific Southwest Region        |
| 17. Scott     | McClellan  | CAL FIRE   |
| 18. Steve     | Mietz      | National Park Service                              |
| 19. Randy     | Moore      | US Forest Service                                  |
| 20. Brian     | Nowicki    | Center for Biological Diversity                    |
| 21. Ken       | Pimlott    | CAL FIRE   |
| 22. Edward    | Smith      | The Nature Conservancy                             |
| 23. Brent     | Skaggs     | USFS, Sequoia National Forest                      |
| 24. Craig     | Thomas     | Sierra Forest Legacy                               |
| 25. Janet     | Upton      | CAL FIRE   |
| 26. Stan      | Van Velsor | The Wilderness Society                             |
| 27. Jeanne    | Wade Evans | US Forest Service                                  |
| 28. Marci     | DuPraw     | Center for Collaborative Policy, Facilitator       |
| 29. Stephanie | Horii      | Center for Collaborative Policy, Asst. Facilitator |

## Appendix A

### Attendance Day 2

| FIRST         | LAST       | AFFILIATION  |
|---------------|------------|--|
| 1. Jim        | Branham    | Sierra Nevada Conservancy                          |
| 2. Susan      | Britting   | Sierra Forest Legacy                               |
| 3. Nic        | Enstice    | Sierra Nevada Conservancy                          |
| 4. Nick       | Goulette   | Northern CA Prescribed Fire Council                |
| 5. Rob        | Griffith   | US Forest Service                                  |
| 6. Matt       | Johnson    | National Park Service                              |
| 7. Edward     | Smith      | The Nature Conservancy                             |
| 8. Brent      | Skaggs     | USFS, Sequoia National Forest                      |
| 9. Craig      | Thomas     | Sierra Forest Legacy                               |
| 10. Stan      | Van Velsor | The Wilderness Society                             |
| 11. Marci     | DuPraw     | Center for Collaborative Policy, Facilitator       |
| 12. Stephanie | Horii      | Center for Collaborative Policy, Asst. Facilitator |

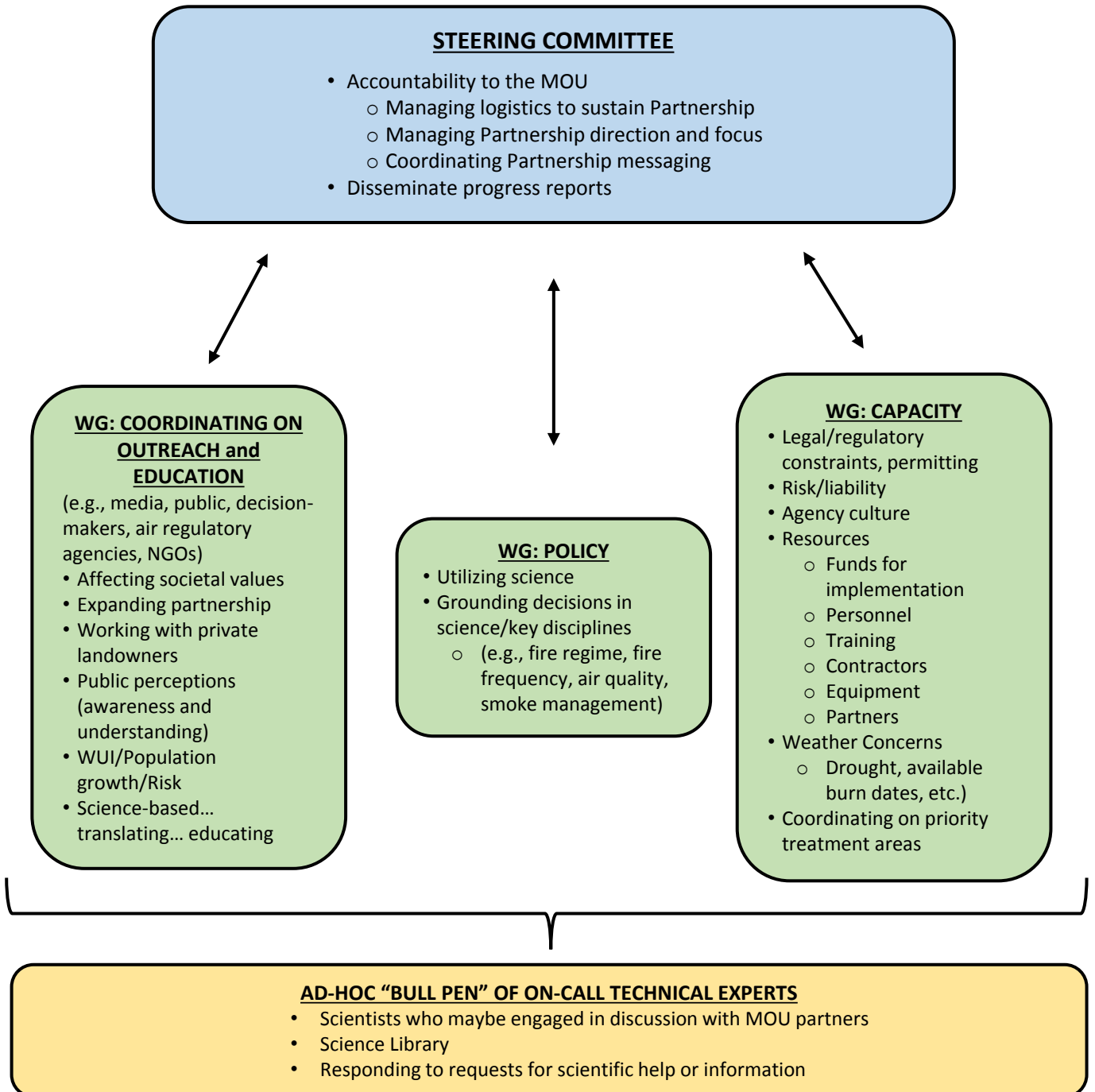
## Appendix B

| <b>Prescribed Fire Use Impediments/Issues</b>  |   |
|--|---|
| <b>LEGEND:</b>   |   |
| <b>Black font</b> – Categories from the 2015 National Prescribed Fire Use Survey Report, Coalition of Prescribed Fire Councils, Inc. |   |
| <b>Blue Font</b> – Additional categories identified during morning discussions of the Fire MOU Kick Off meeting 2/2/16               |   |
| <b>1. Capacity Concerns</b>  | Limited personnel, training, private contractor availability, Partnerships, equipment   |
| <b>2. Weather Concerns</b>   | Narrow burn windows, drought, available burn days   |
| <b>3. Air Quality/Smoke Management Concerns</b>  | Visibility, nuisance, emission impacts  |
| <b>4. Resource Concerns</b>  | Limited funding, high implementation costs  |
| <b>5. Public Perception Concerns</b>   | Lack of public understanding/acceptance   |
| <b>6. Liability/Insurance Concerns</b>   | Landowner liability, insurance availability and/or cost   |
| <b>7. Permitting/Legal Concerns</b>  | State law, burn bans, local restrictions, NEPA process, ESA   |
| <b>8. WUI/Population Growth Concerns</b>   | Urbanization, influx of new residents   |
| <b>9. Low Priority</b>   | Agency or landowner priority, too difficult   |
| <b>10. Coordinating on Outreach and Education</b>  | Targeted for: Media, public, decision-makers, policy-makers, air regulatory agencies, NGOs  |
| <b>11. Expanding the Partnership</b>   | E.g., Air quality agencies  |
| <b>12. Coordinating/Prioritizing Treatment Areas</b>   |   |
| <b>13. Agency Culture/Turning “Ships”</b>  |   |
| <b>14. Need Accountability for Feedback Loops/Commitment to Learning (Adaptive Management)</b>                                       | Monitoring, reporting; science and social perceptions; political/social/ecology   |
| <b>15. Working with Private Land Owners</b>  |   |
| <b>16. Science</b>   | Translating, utilizing, educating, grounding decisions in it (Fire regime, frequency, air quality science)<br>Relates to Outreach |



## Fire MOU Group Functions and Suggested Governance Structure (Day 1)

*Increasing the use of fire to meet ecological and other management objectives*



## Appendix D Fire MOU Partnership | Outreach Work Group

### Charge & Priority Tasks

#### PRINCIPLES

*Management decisions informed by science  
Adaptive management (Social; Ecological)*

#### Leadership

##### Co-Leads

- NGO – Craig Thomas (SFL)
- Fed – Rob Griffith (USFS)
- Media Team:
  - Janet Upton (CAL FIRE)
  - Stephanie Gomes (USFS)
  - Brittany Kovich (SNC)

##### Additional Possible Members

- Placer County District – Ann Hobbs
- CARB – Dar Mim

#### Work Group Charge

- Conduct targeted outreach to regulatory agencies, health entities, NGOs, etc.
- Broaden public support for increasing fire use through joint action
- Outreach to impacted communities to educate and notify/warn
  - Consideration of unintended consequences on communities – e.g., Recreational income for businesses (economic impacts)
  - Explanation of why an event is happening
  - Information on how to protect selves
- Establish dialogue with concerned entities (e.g., health folks)
- Increase partners (beyond the regular groups)
  - How identify whom to invite on rolling basis?
  - Who reaches out/How?
  - Can more organizations join Steering Committee? How?
    - Default “No.” Explain how the current structure serves all.
- Develop agreed-upon definitions, terms, messages, etc.
- Explore options on external web-based mechanisms for outreach.
- Consider establishing an online/automatic MOU endorsement form.
- Develop canned messaging for particular situations (e.g., fire event) that requires quick response turnaround.
- Collect partners’ approved, standard affirmative messages you can use without vetting with the entire MOU group.

#### Next Steps for Work Group Co-Leads

1. Recruit working group members
2. Schedule conference call
3. Within 3 months, send proposed actions to Steering Committee to review / package up into draft action plan for distribution to full MOU partnership group

#### Priority Actions Assigned to This Work Group by Steering Committee

- Action 1 – Reach out to air quality agencies (District, State, Fed) – invite their participation (leveraging TMTF efforts)
  - Identify players
  - Identify questions
  - Figure out if/how we can dovetail with the TMTF work
- Action 2 – Media Team – Build 2016 shared communications plan
  - Wildfire Awareness Week - Invite California Air Resources Board participation

# Fire MOU Partnership | Policy Work Group

## Charge & Priority Tasks

### PRINCIPLES

*Management decisions informed by science*

*Adaptive management (Social; Ecological)*

### Leadership

#### Co-Leads

- NGO – Craig Thomas (SFL)
- State – Jim Branham / Nic Enstice (SNC)
- Federal – Robin Wills (NPS)

### Additional Possible Members

- ARB – Klaus Scott
- USFS – Leland Tarnay
- USFS – Trent Proctor/Ricardo Cisneros
- Private landowners – Larry Camp
- Cattlemen’s Association
- California Range Coalition (Nick G has 2 names)
- Central Coast Prescribed Fire Council

### Work Group Charge

- Identify policy conflict with our MOU purpose
- Identify proposed policies that would conflict with other existing policies, regulations, etc.
- Evaluate and make recommendations to partnership regarding possible joint/individual responses
- Identify positive policy/frameworks that can anchor our work together
- Hone our understanding of key barriers/key bottle neck areas
- Identify and implement actions that we could do to get policies in alignment with MOU

(NOTE - wherever ‘policy’ is mentioned above, it includes funding-related policies)

### Next Steps for Work Group Co-Leads

1. Recruit working group members
2. Schedule conference call
3. Within 3 months, send proposed actions to Steering Committee to review / package up into draft action plan for distribution to full MOU partnership group

### Priority Actions Assigned to This Work Group by Steering Committee

- Action 1 – Identify/define key bottlenecks/obstacles to increase fire use...at what level are they best addressed? (Differentiate between obstacles related to prescribed vs. naturally ignited fire)

# Fire MOU Partnership | Capacity Work Group

## Charge & Priority Tasks

### PRINCIPLES

*Management decisions informed by science*

*Adaptive management (Social; Ecological)*

### Leadership

#### Co-Leads

- NGO – Nick Goulette (N CA Prescribed Fire Council)
- State – Helge Eng (CAL FIRE)
- Federal – Brent Skaggs (USFS)

### Additional Possible Members

- USFS – Jamie Tripp
- UC Davis - Malcolm North
- CAL FIRE – Brett Gouvea
- Southern California Edison – Rich Bagley

### Work Group Charge

- Identify resources needed to reach priority ecological outcomes and how to secure those resources
  - Link to Policy Workgroup (“Hone our understanding of key barriers and bottlenecks”)
- Inventory and Identify opportunities for novel and/or expanded training and resource sharing;
  - Identify what to model that is replicable.
  - Leverage our respective resources and authorities
  - How work across agencies
  - What resource-sharing mechanisms and Partnership tools we can use
- Identify agency constraints on use of fire
  - Variability within agency
  - Perception of risk/liability
  - Access to information
- Identify promising opportunities for increased fire use

### Next Steps for Work Group Co-Leads

1. Recruit working group members
2. Schedule conference call
3. Within 3 months, send proposed actions to Steering Committee to review / package up into draft action plan for distribution to full MOU partnership group

### Priority Actions Assigned to This Work Group by Steering Committee

- Action 1 – Inventory opportunities for expanded training and resource sharing
- Action 2 – Identify promising opportunities for increased fire use (and why, to support thinking / learning regarding replicability)

**ADDITIONAL POSSIBLE MEMBERS for WORK GROUPS**

- California Air Pollution Control Officers – ex. Alan Abs (Policy Work Group?)
- Humboldt State Univ – Erin Kelly (Policy Work Group?)
- Tribes
- Fire Management Officers/USFS
- Fires Safe Council
- Extension
- RCD's
- RCRC – Stacy Heaton
- UC Berkeley – Scott Stephens
- Other Fire Scientists

# Fire MOU Partnership | Steering Committee

## Charge & Priority Tasks

### PRINCIPLES

*Management decisions informed by science  
Adaptive management (Social; Ecological)*

### Tasks Outlined in MOU

- Identify Approaches and activities
- Establish meeting schedule
- Create action plan (review/update biannually with other interested partners)

### Additional Tasks

- Ensure accountability to the MOU
  - Managing the logistics needed to sustain the MOU Partnership
  - Managing and directing where the group is going and its internal priorities (e.g., maintaining the focus on the MOU objectives (vs. individual/organizational agendas) and setting priorities for the Work Groups)
  - Coordinating development of the Partnership's messaging and media efforts
- Disseminate progress reports (possibly e-newsletter format)

### Leadership

Steering Committee Co-Chairs: Craig Thomas (SFL) & Rob Griffith (USFS)

### Membership

Equal # of Government and NGO representatives:

- **4 Government Agencies – CAL FIRE, SNC, USFS, NPS**
  - CAL FIRE – Helge Eng
  - USFS – Rob Griffith
  - SNC – Jim Branham
  - NPS – Robin Wills
- **4 NGOs – TWS, SFL, TNC, CBD**
  - TWS – Stan Van Velsor
  - SFL – Craig Thomas
  - TNC – Ed Smith
  - CBD – Justin Augustine

### Next Steps

- Organize next meeting of Steering Committee / other interested MOU partners, & possible new partners for early June
- Develop story regarding historic/ecological fire regime –
  - Where are we now... who can do what to get things back in balance...
  - Define achievable future condition – what it is, how to get there
  - Link to outreach workgroup

# Fire MOU Revised Governance Structure (Day 2)

*Increasing the use of fire to meet ecological and other management objectives*

