

X-TREME™

48K19X

PARTS MANUAL



Table of Contents

| | |
|---|-------|
| ■ QUICK REFERENCE GUIDE FOR 48K19X..... | A - 1 |
| ■ DECK COMPONENTS | B - 1 |
| ■ DECK LIFT COMPONENTS | C - 1 |
| ■ FRAME COMPONENTS..... | D - 1 |
| ■ DRIVE COMPONENTS | E - 1 |
| ■ CONTROL COMPONENTS | |
| LINKAGE PARTS..... | F - 1 |
| RIGHT HAND CONTROL BOX PARTS | F - 3 |
| LEFT HAND CONTROL BOX PARTS | F - 5 |
| ■ BRAKE COMPONENTS | |
| RIGHT HAND SIDE | G - 1 |
| LEFT HAND SIDE..... | G - 3 |
| ■ HYDRO COMPONENTS | H - 1 |
| ■ FUEL COMPONENTS | I - 1 |
| ■ ELECTRICAL SCHEMATICS..... | J - 1 |
| ■ DECAL LIST..... | K - 1 |
| ■ BLANK NOTE PAGES | L - 1 |

48K19X

Engine

19hp Kawasaki electric FH601V-CS26

Blades

483035 16" blade
483049 16" mulch blade
483050 16" super hi-lift blade

Belts

483053 blade drive belt
423272 pump drive belt

Tires

533091 wheel/tire assy
533092 drive tire (23x8.5X12)
533094 rim w/ valvestem
523280 front caster complete
123049 tire (13x5x6 front caster)

Spindles

583106 spindle assy comp.
583111 housing
363350 bearing
583112 shaft
583113 brg. Spacer tube

Transmission

583325 wheel motor TJ0230US080AAAJ **Seal Kit # 583520**
533079 hydro pump BDP-10A w/ RTN **Seal Kit # 533107**
423361 hydro filter

***synthetic hydro oil capacity approx. 2.7 qts.

Throttle 363352

Choke 423153

Wire Harness 423351

Safety Module 423030

Electrical Components

423027 Ignition Switch
422150 Starter Relay
523034 Park Brake Switch
593041 Neutral Switch
523031 PTO Switch
523030 Seat Switch
523283 Hour Meter

Clutch 423285

Torque Specs

65 ft-lbs blade bolt
90 ft-lbs nut on top of spindle
50 ft-lbs clutch bolt
175-200 ft-lbs wheel motor axle nut

Pulleys

423231 pump drive pulley
523328 tensioner pulley-pump belt
533052 pump pulley
533114 tensioner pulley-blade drive belt
523329 stationary idler pulley-deck
483078 pulley-blade spindle

Front Caster Bearings

533086 bearing

Brakes

592094 wheel hub-shoe brake
533032 drum brake link
423310 brake drum
423276 brake shoe
423281 brake spring

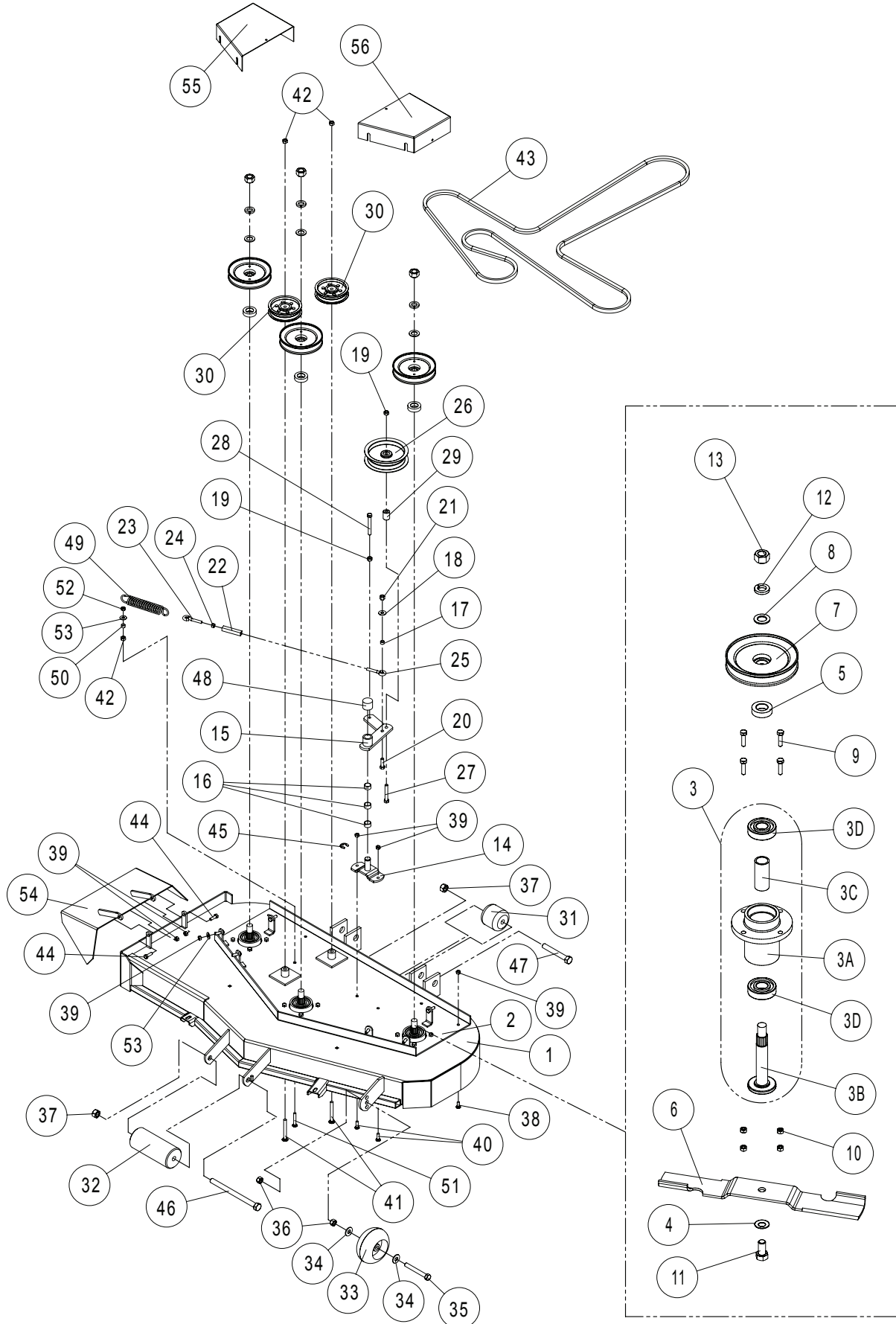
Seat

583077 seat complete w/ tracks
583089 seat cushion
583090 back cushion
593097 molded arm rest

Muffler 533058

Gasket 483098

Deck Components





Deck Components

| # | PART NO. | QTY. | DESCRIPTION |
|----|----------|------|--------------------------|
| 1 | 532052 | 1 | X48 DECK WELDMENT |
| 2 | 532054 | 1 | X48 SUB PLATE WLDMNT |
| 3 | 583106 | 3 | BLADE SPINDLE ASSY |
| 3A | 583111 | 3 | SPINDLE HOUSING |
| 3B | 583112 | 3 | SPINDLE SHAFT |
| 3C | 583113 | 3 | BEARING SPACER TUBE |
| 3D | 363350 | 6 | BEARING - BLADE SPINDLE |
| 4 | 583108 | 3 | 5/8 DISC SPRING WASHER |
| 5 | 583110 | 3 | PULLEY SPACER |
| 6 | 483035 | 3 | 16" BLADE |
| 7 | 483078 | 3 | 5.75 HEX PULLEY |
| 8 | 105269 | 3 | 3/4 SAE FLAT WASHER |
| 9 | 100274 | 12 | 5/16-18 X 1-1/4 HHCS |
| 10 | 104256 | 12 | 5/16-18 NYLOC NUT |
| 11 | 100355 | 3 | 5/8-11 X 1-1/4 HHCS |
| 12 | 105010 | 3 | 3/4 LOCK WASHER |
| 13 | 104511 | 3 | 3/4-16 HEX NUT |
| 14 | 522104 | 1 | OFFSET PIVOT |
| 15 | 422108 | 1 | IDLER ARM W/BUSHINGS |
| 16 | 363089 | 3 | BRONZE BUSHINGS |
| 17 | 363174 | 1 | EYE BOLT SPACER |
| 18 | 105260 | 1 | 3/8 STD FLAT WASHER |
| 19 | 109007 | 2 | 3/8-16 WHIZ LOCK NUT |
| 20 | 100293 | 1 | 3/8-16 X 1-1/4 HHCS |
| 21 | 104257 | 1 | 3/8-16 NYLOC NUT |
| 22 | 363172 | 1 | TURNBUCKLE BODY |
| 23 | 363080 | 1 | RIGHT EYEBOLT |
| 24 | 109001 | 1 | 5/16-18 WHIZLOCK NUT |
| 25 | 363082 | 1 | EYEBOLT-LEFT |
| 26 | 533114 | 1 | ENGAGEMENT IDLER |
| 27 | 100298 | 1 | 3/8-16 X 2-1/2 HHCS |
| 28 | 100300 | 1 | 3/8-16 X 3 HHCS |
| 29 | 523277 | 1 | IDLER SPACER |
| 30 | 523329 | 2 | FLOATING IDLER - FLAT |
| 31 | 523084 | 1 | REAR DECK ROLLER |
| 32 | 603023 | 1 | FRONT ANT-SCALP ROLLER |
| 33 | 423023 | 1 | DECK ROLLER |
| 34 | 105264 | 2 | 1/2 STD FLAT WASHER |
| 35 | 100335 | 1 | 1/2-13 X 4 HHCS |
| 36 | 104509 | 2 | 1/2-13 HEX NUT |
| 37 | 104261 | 2 | 5/8-11 HEX NUT |
| 38 | 107503 | 1 | 5/16-18 X 3/4 CARR. HEAD |
| 39 | 104256 | 6 | 5/16-18 NYLOC NUT |

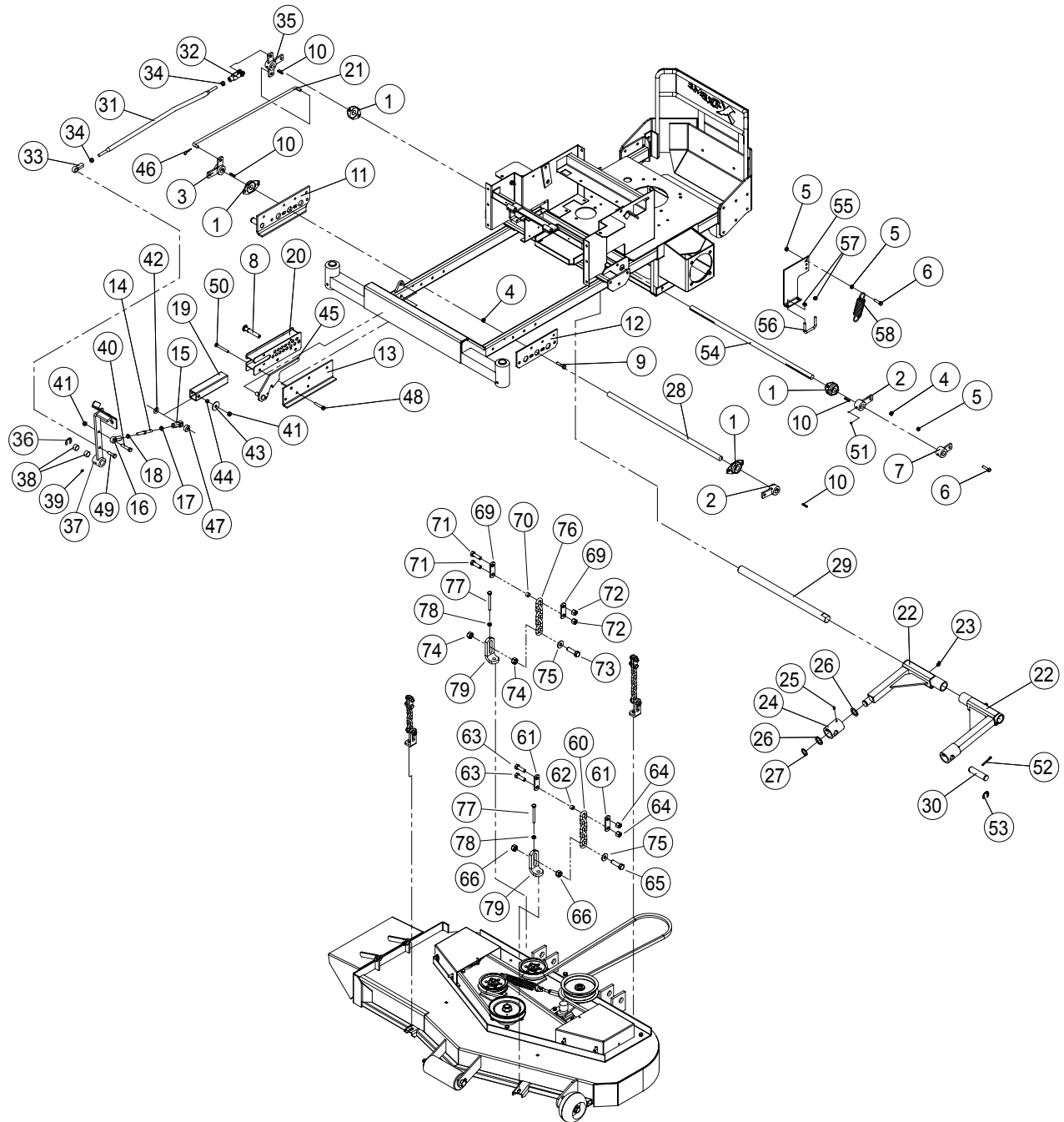


Deck Components

| # | PART NO. | QTY. | DESCRIPTION |
|----|----------|------|------------------------------|
| 40 | 107509 | 2 | 5/16-18 x 1 CARRIAGE BOLT |
| 41 | 107506 | 2 | 3/8-16 X 3-1/4 CARRIAGE BOLT |
| 42 | 109007 | 3 | 3/8-16 WHIZ LOCK NUT |
| 43 | 483053 | 1 | DECK DRIVE BELT |
| 44 | 100273 | 2 | 5/16-18 X 1 HHCS |
| 45 | 108509 | 1 | 3/4 E-RING |
| 46 | 100351 | 1 | 5/8-11 X 8-1/2 HHCS |
| 47 | 100346 | 1 | 5/8-11 X 4-1/2 HHCS |
| 48 | 103009 | 1 | CAPLUG 1-1/4 |
| 49 | 523327 | 1 | FLOATING IDLER SPRING |
| 50 | 363174 | 1 | EYE BOLT SPACER |
| 51 | 107508 | 1 | 5/16-18 X 2 CARRIAGE BOLT |
| 52 | 109001 | 1 | 5/16-18 WHIZLOCK NUT |
| 53 | 105258 | 2 | 5/16 STD FLAT WASHER |
| 54 | 582025 | 1 | GRASS DEFLECTOR WLDMNT |
| 55 | 532056 | 1 | X48 RH BELT COVER |
| 56 | 532058 | 1 | X48 LH BELT COVER |

X-TREME48

Deck Lift Components





Deck Lift Components

| # | PART NO. | QTY. | DESCRIPTION |
|----|----------|------|--------------------------------------|
| 1 | 423140 | 4 | 3/4 2 BOLT BEARING |
| 2 | 422041 | 2 | DECK LIFT ARM |
| 3 | 422043 | 1 | DECK LIFT CRANK |
| 4 | 104256 | 2 | 5/16 NYLOCK NUT |
| 5 | 109001 | 3 | 5/16-18 WHIZLOCK NUT |
| 6 | 100274 | 2 | 5/16-18 X 1-1/4 HHCS |
| 7 | 422056 | 1 | SPRING ASSIST ARM |
| 8 | 109036 | 1 | DECK HEIGHT PIN |
| 9 | 100275 | 1 | 5/16-18 X 1 1/2 HHCS |
| 10 | 107255 | 4 | 3/16 X 3/16 X 1 MACHINE KEY |
| 11 | 422128 | 1 | LIFT MOUNT |
| 12 | 423344 | 1 | LH LIFT MOUNT |
| 13 | 423322 | 1 | HEIGHT GAGE MOUNT |
| 14 | 343158 | 1 | FOOT PEDAL LINK |
| 15 | 523104 | 1 | ROD END RH 3/8 |
| 16 | 343160 | 1 | ROD END LHF 3/8 |
| 17 | 104754 | 1 | 3/8-24 HEX JAM NUT |
| 18 | 109037 | 1 | 3/8-24 LH HEX JAM NUT |
| 19 | 343093 | 1 | DECK HEIGHT TUBE |
| 20 | 342016 | 1 | HEIGHT CONTROL |
| 21 | 523474 | 1 | DECK LIFT ROD |
| 22 | 532008 | 1 | DECK ARM WELDMENT |
| 23 | 111008 | 2 | 1/4-28 TAPER THREAD - 90 DEGREE ZERK |
| 24 | 823074 | 1 | DECK ARM SWIVEL |
| 25 | 111004 | 1 | 1/4-28 ZERK |
| 26 | 823015 | 2 | DECK ARM WASHER RAW |
| 27 | 108502 | 1 | 1.0 EXTERNAL SNAP RING |
| 28 | 533010 | 1 | LIFT SHAFT- FRONT |
| 29 | 823050 | 1 | DECK ARM SHAFT |
| 30 | 823333 | 2 | DECK ATTACH PIN |
| 31 | 533060 | 1 | DECK LIFT ROD |
| 32 | 533083 | 1 | CLEVIS END - 1/2" |
| 33 | 533084 | 1 | ROD END - 1/2" |
| 34 | 104755 | 2 | 1/2-20 JAM NUT |
| 35 | 532036 | 1 | DECK LIFT HUB |
| 36 | 108509 | 1 | E-RING 3/4 DIA. |
| 37 | 532034 | 1 | DECK LIFT PEDAL |
| 38 | 363089 | 2 | BRONZE BUSHINGS |
| 39 | 111004 | 1 | 1/4-28 ZERK |
| 40 | 100295 | 1 | 3/8-16 X 1-3/4 HHCS |
| 41 | 104257 | 2 | 3/8-16 NYLOCK NUT |
| 42 | 105260 | 1 | 3/8 STANDARD FLAT WASHER |
| 43 | 483019 | 1 | RT. HAND IDLER WASHER |

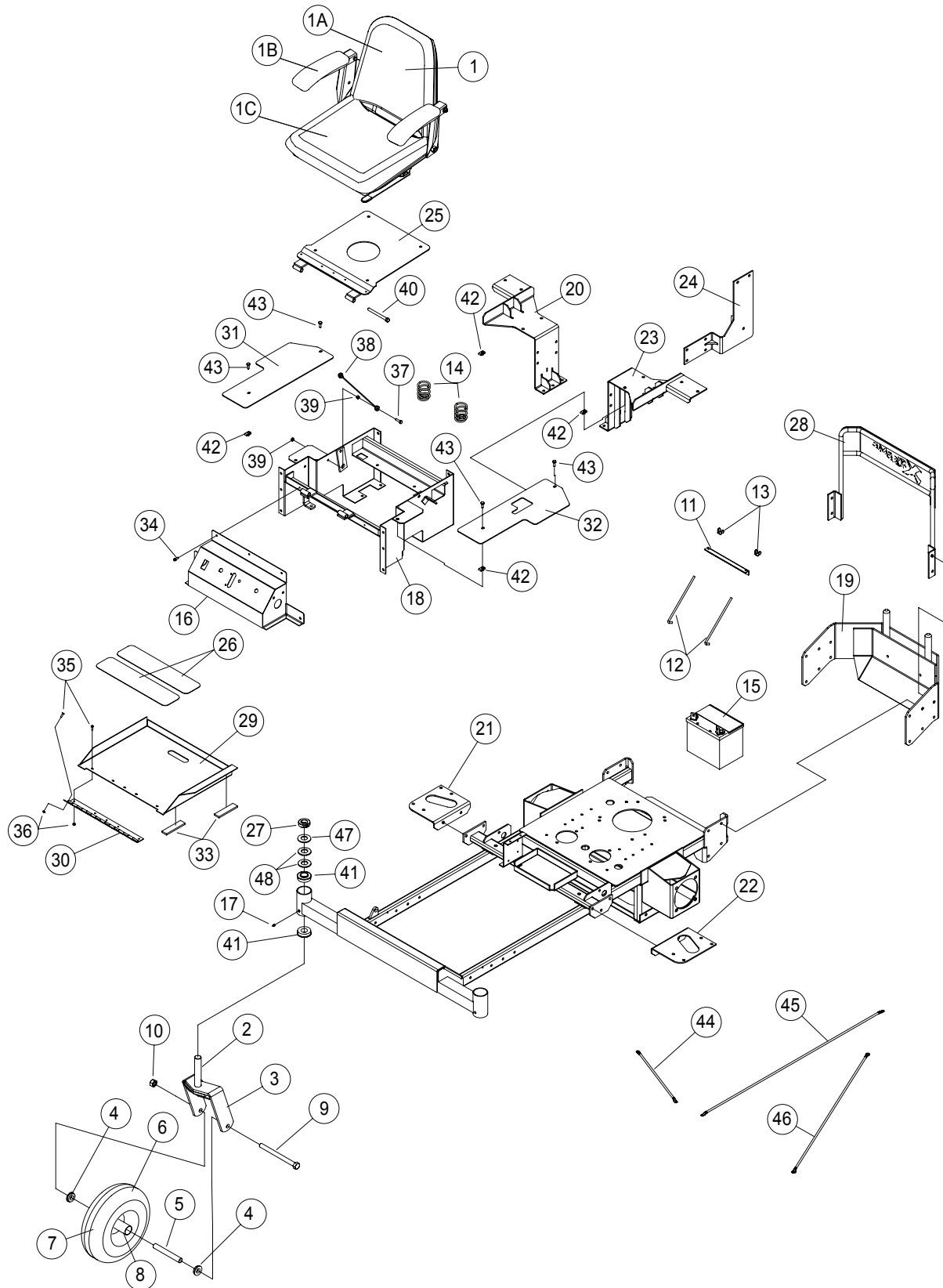


Deck Lift Components

| # | PART NO. | QTY. | DESCRIPTION |
|----|----------|------|--------------------------|
| 44 | 363174 | 1 | EYE BOLT SPACER |
| 45 | 532032 | 1 | LIFT LOCK WELDMENT |
| 46 | 363165 | 1 | #3 HAIRPIN COTTOR |
| 47 | 483017 | 1 | RH IDLER SPACER |
| 48 | 100276 | 1 | 5/16-18 X 1-3/4 HHCS |
| 49 | 100293 | 1 | 3/8-16 x 1 1/4 HHCS |
| 50 | 100279 | 1 | 5/16-18 X 2-1/2 HHCS |
| 51 | 103292 | 1 | 1/4-28 SETSCREW |
| 52 | 106778 | 2 | 3/16 X 1-1/2 COTTER PIN |
| 53 | 108510 | 2 | 7/8 E-RING |
| 54 | 423096 | 1 | REAR DECK LIFT SHAFT |
| 55 | 423382 | 1 | SPRING MOUNT |
| 56 | 523375 | 1 | U-BOLT SQ. 2" |
| 57 | 104256 | 2 | 5/16-18 NYLOCK |
| 58 | 523327 | 1 | FLOATING IDLER SPRING |
| 59 | 423358 | 1 | DECK LIFT ANGLE |
| 60 | 423359 | 1 | FRONT CHAIN |
| 61 | 423356 | 2 | LIFT CHAIN LINK |
| 62 | 363174 | 1 | EYE BOLT SPACER |
| 63 | 100293 | 2 | 3/8-16 x 1 1/4 HHCS |
| 64 | 104257 | 2 | 3/8-16 NYLOCK NUT |
| 65 | 100311 | 1 | 7/16-14 X 1-1/2 |
| 66 | 109027 | 2 | 7/16-14 WHIZLOCK NUT |
| 67 | 105260 | 1 | 3/8 STANDARD FLAT WASHER |
| 68 | 423358 | 1 | DECK LIFT ANGLE |
| 69 | 423356 | 2 | LIFT CHAIN LINK |
| 70 | 363174 | 1 | EYE BOLT SPACER |
| 71 | 100293 | 2 | 3/8-16 x 1 1/4 HHCS |
| 72 | 104257 | 2 | 3/8-16 NYLOCK NUT |
| 73 | 100311 | 1 | 7/16-14 X 1-1/2 |
| 74 | 109027 | 2 | 7/16-14 WHIZLOCK NUT |
| 75 | 105260 | 1 | 3/8 STANDARD FLAT WASHER |
| 76 | 423360 | 1 | REAR CHAIN |
| 77 | 100008 | 4 | 1/4-20 X 2 HHCS |
| 78 | 104758 | 4 | 1/4-20 HEX JAM NUT |
| 79 | 533112 | 4 | ADJUSTABLE CHAIN MOUNT |

X-TREME48

Frame Components





Frame Components

| # | PART NO. | QTY. | DESCRIPTION |
|----|----------|------|---------------------------------|
| 1 | 583077 | 1 | SEAT LT. GREY W/ TRACK |
| 1A | 583090 | -- | BACK SEAT CUSHION |
| 1B | 593097 | -- | MOLDED ARM REST |
| 1C | 583089 | -- | SEAT CUSHION |
| 2 | ----- | -- | N/A |
| 3 | 522097 | 1 | 13" STRUT WELDMENT |
| 4 | 533086 | 2 | BEARING-FRONT WHEEL 3/4 BALL |
| 5 | 523098 | 1 | LARGE AXLE TUBE |
| 6 | 523280 | 1 | FRONT WHEEL COMPLETE |
| 7 | 123049 | 1 | TIRE (13 X 5 X 6) |
| 8 | 533078 | 1 | FRONT CASTER RIM |
| 9 | 100349 | 1 | 5/8-11 X 7-1/2 HHCS |
| 10 | 104261 | 1 | 5/8-11 HEX NUT |
| 11 | 423011 | 1 | HOLD DOWN ANGLE |
| 12 | 423172 | 2 | BATTERY HOLD DOWN RODS |
| 13 | 109012 | 2 | 1/4 WING NUT |
| 14 | 523278 | 2 | SEAT SPRING |
| 15 | 423142 | 1 | BATTERY, U1-9 |
| 16 | 422148 | 1 | CONTROL PANEL - Z |
| 17 | 111001 | 1 | 1/8 NPT STRAIGHT ZERK |
| 18 | 532012 | 1 | SEAT FRAME WLDMNT - PNTD |
| 19 | 532016 | 1 | REAR GUARD |
| 20 | 532022 | 1 | RH REAR TANK MOUNT |
| 21 | 533042 | 1 | FRONT TANK PLATE RH |
| 22 | 533044 | 1 | FRONT TANK PLATE LH |
| 23 | 532024 | 1 | LH REAR TANK MOUNT |
| 24 | 422136 | 1 | OIL TANK MOUNT |
| 25 | 422132 | 1 | SEAT PLATE |
| 26 | 343110 | 3 | STEP TREAD - Z34 |
| 27 | 363145 | 2 | 1" CLAMP COLLAR |
| 28 | 532010 | 1 | AC GUARD WELDMENT |
| 29 | 533026 | 1 | FOOT PLATE |
| 30 | 523105 | 1 | HINGE |
| 31 | 533046 | 1 | RH SEAT PANEL |
| 32 | 533048 | 1 | LH SEAT PANEL |
| 33 | 363201 | 2 | GAS TANK PAD |
| 34 | 102000 | 1 | SELF TAPPING SCREW #12-24 X 5/8 |
| 35 | 101039 | 2 | #10-24 X 5/8 PAN HD. SCREW |
| 36 | 104252 | 2 | #10 NYLOCK NUT |
| 37 | 100004 | 1 | 1/4-20 x 1 HHCS |
| 38 | 523044 | 1 | SEAT CABLE |
| 39 | 109000 | 2 | 1/4-20 WHIZ LOCK NUT |
| 40 | 100303 | 1 | 3/8-16 X 4 HHCS |

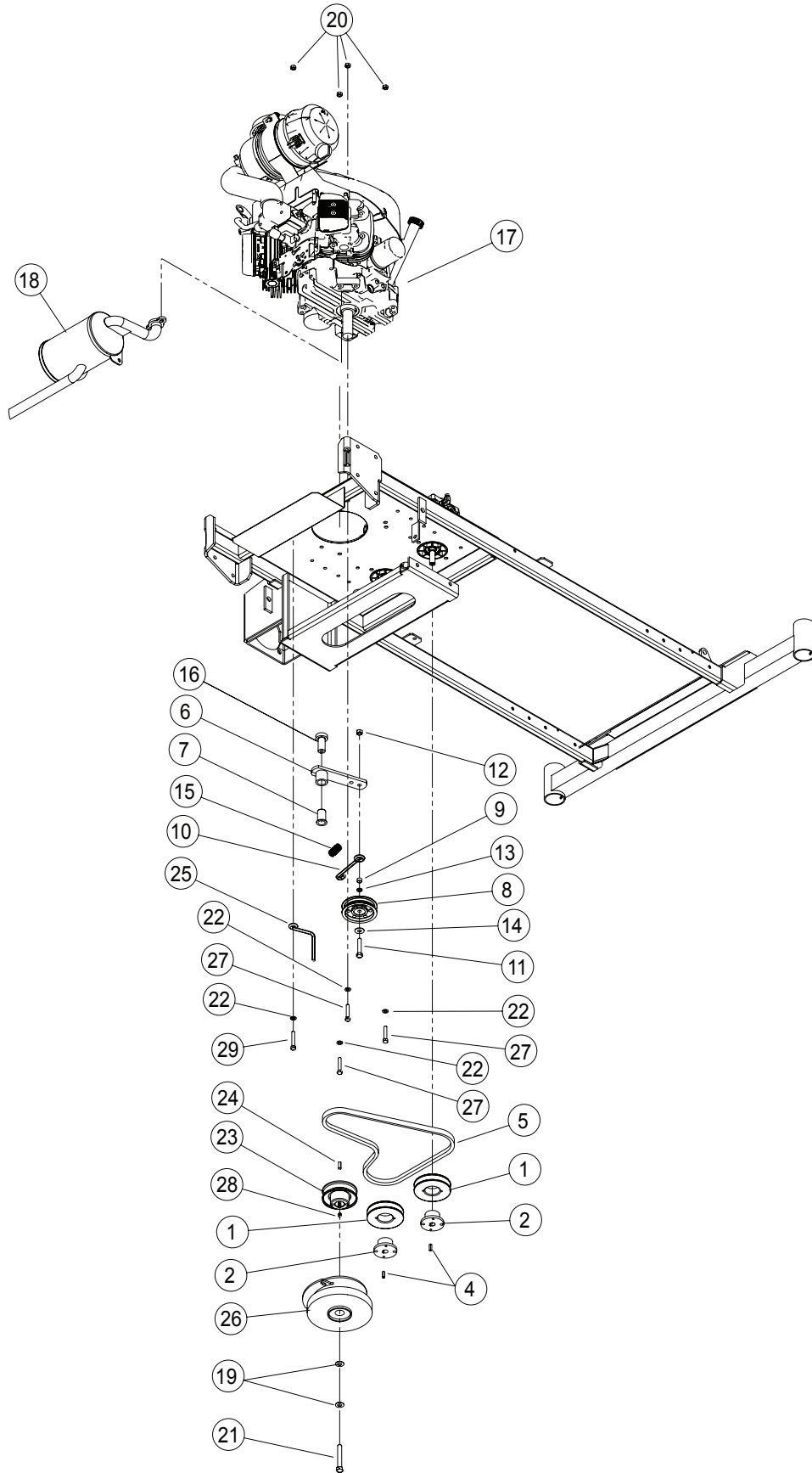


Frame Components

| # | PART NO. | QTY. | DESCRIPTION |
|----|----------|------|------------------------|
| 41 | 363187 | 4 | 7/8 FLANGE BEARING |
| 42 | 109015 | 4 | 1/4-20 NUT CLIP |
| 43 | 100252 | 4 | 1/4-20 X 3/4 HHCS |
| 44 | 423116 | 1 | POSITIVE CABLE - SHORT |
| 45 | 423117 | 1 | POSITIVE CABLE - LONG |
| 46 | 423118 | 1 | NEGATIVE CABLE |
| 47 | 583171 | 2 | CASTER WASHER |
| 48 | 105501 | 4 | WAVY WASHER |

X-TREME48

Drive Components

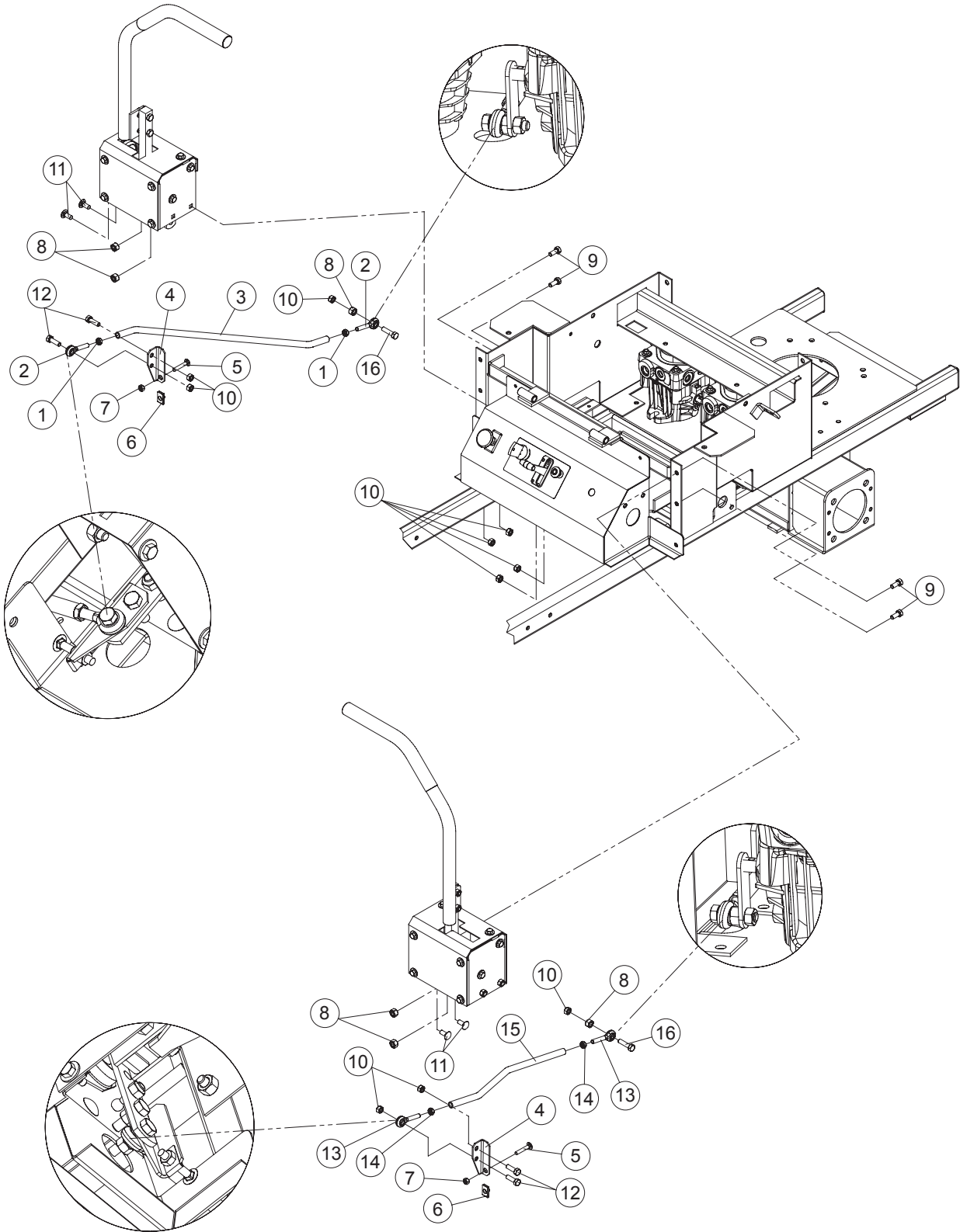




Drive Components

| # | PART NO. | QTY. | DESCRIPTION |
|----|----------|------|---------------------------|
| 1 | 533052 | 2 | PUMP PULLEY |
| 2 | 423178 | 2 | 15MM TAPER HUB |
| 3 | 453074 | 4 | 90° ADAPTER |
| 4 | 453102 | 2 | PUMP KEY |
| 5 | 423272 | 1 | PUMP DRIVE BELT |
| 6 | 422025 | 1 | TENSIONER W/ BUSHING |
| 7 | 523111 | 1 | 3/4 PLASTIC BUSHING |
| 8 | 523328 | 1 | FLAT IDLER |
| 9 | 363174 | 1 | EYE BOLT SPACER |
| 10 | 423122 | 1 | PUMP TENSION ROD |
| 11 | 100296 | 1 | 3/8-16 X 2 HHCS |
| 12 | 109007 | 1 | 3/8-16 WHIZ LOCK NUT |
| 13 | 105005 | 1 | 3/8 LOCK WASHER |
| 14 | 105260 | 1 | 3/8 STANDARD FLAT WASHER |
| 15 | 553007 | 1 | IDLER SPRING |
| 16 | 423175 | 1 | IDLER PIVOT |
| 17 | N/A | 1 | ENGINE |
| 18 | 533058 | 1 | MUFFLER - 23/25 KAW |
| 19 | 423069 | 2 | 7/16 DISC SPRING WASHER |
| 20 | 104256 | 4 | 5/16-18 NYLOCK |
| 21 | 100536 | 1 | 7/16-20 X 3 HHCS |
| 22 | 363226 | 4 | 5/16 DISC SPRING WASHER |
| 23 | 423231 | 1 | DRIVE PULLEY – PUMP |
| 24 | 107258 | 1 | 1/4 X 1/4 X 3/4 MACH. KEY |
| 25 | 373070 | 1 | BELT GUIDE - LONG |
| 26 | 423285 | 1 | ELECTRIC CLUTCH |
| 27 | 100276 | 3 | 5/16-18 X 1-3/4 HHCS |
| 28 | 103293 | 1 | 5/16-18 SET SCREW |
| 29 | 100277 | 1 | 5/16-18 X 2 HHCS |

Control Components - Linkage

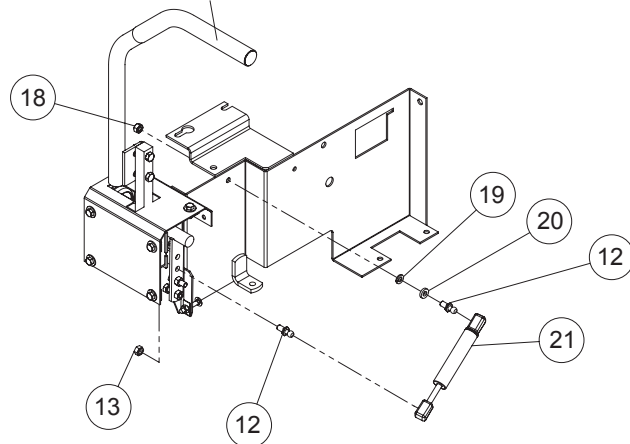
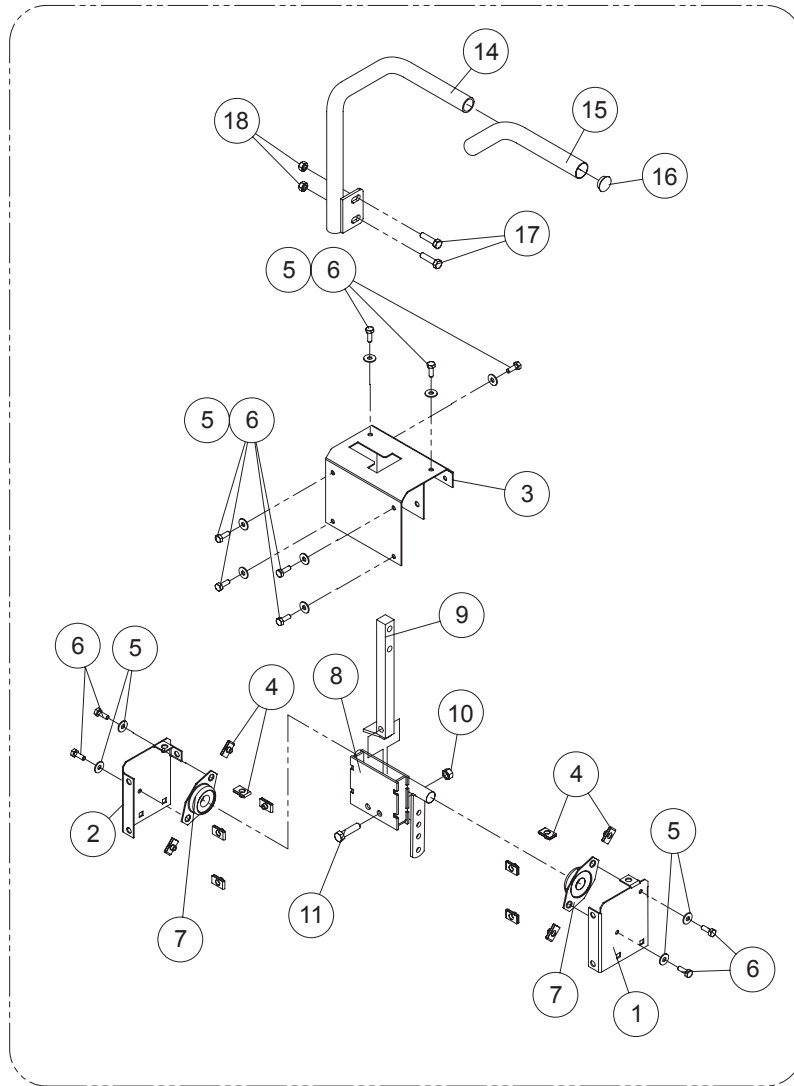




Control Components - Linkage

| # | PART NO. | QTY. | DESCRIPTION |
|----|----------|------|-----------------------------|
| 1 | 104752 | 2 | 5/16-24 JAM NUT |
| 2 | 453082 | 2 | 5/16 ROD END |
| 3 | 423318 | 1 | CONTROL LINK - RH |
| 4 | 423376 | 2 | LEVER STOP ANGLE |
| 5 | 107523 | 2 | 1/4-20 x 1-1/2 CARR HD BOLT |
| 6 | 109015 | 2 | 1/4-20 NUT CLIP |
| 7 | 109000 | 2 | 1/4-20 WHIZ LOCK NUT |
| 8 | 104256 | 7 | 5/16 NYLOCK NUT |
| 9 | 100271 | 4 | 5/16-18 X 3/4 HHCS |
| 10 | 104256 | 10 | 5/16-18 WHIZLOCK |
| 11 | 107503 | 4 | 5/16-18 X 3/4 CARR BOLT |
| 12 | 100273 | 4 | 5/16-18 X 1 HHCS |
| 13 | 453082 | 2 | 5/16 ROD END |
| 14 | 104752 | 2 | 5/16-24 JAM NUT |
| 15 | 423317 | 1 | CONTROL LINK - LH |
| 16 | 100274 | 2 | 5/16-18 X 1-1/4 HHCS |

Control Components - RH Handles

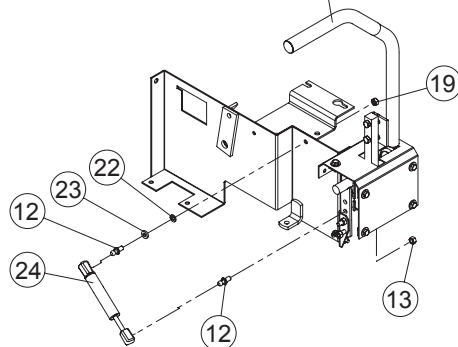
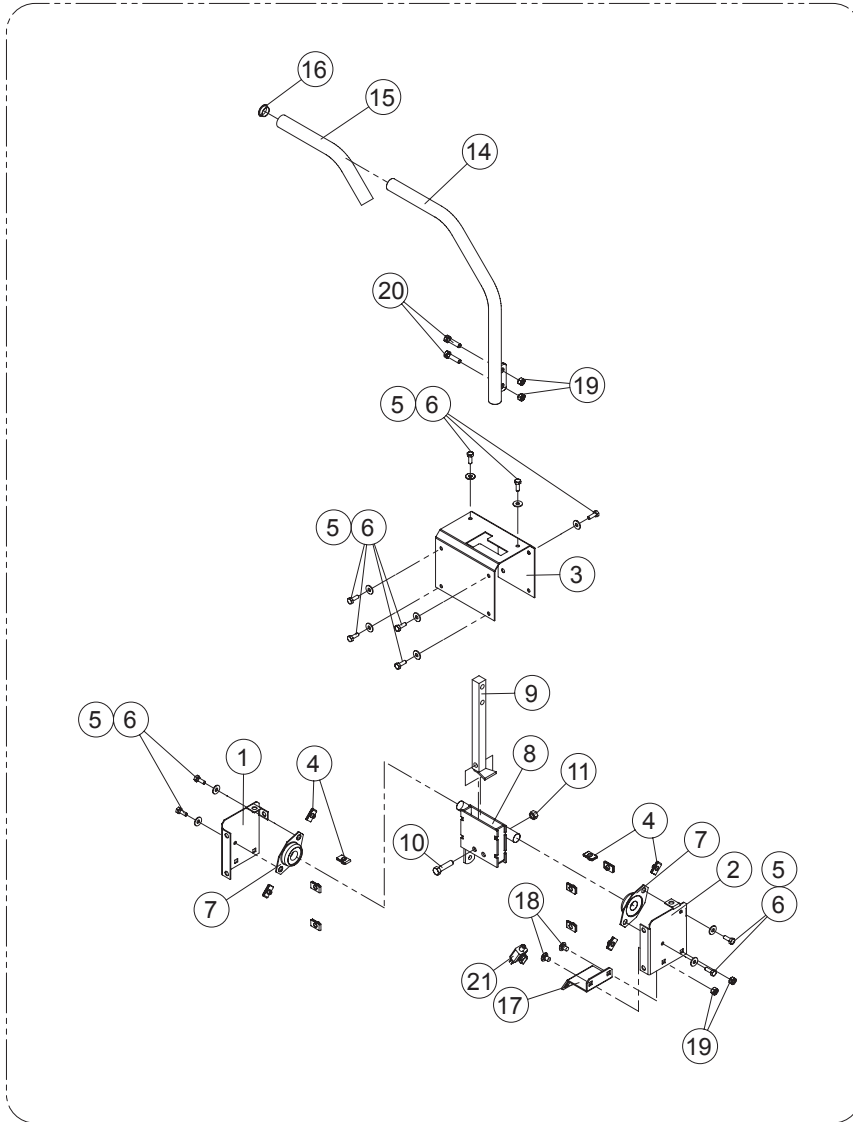




Control Components - RH Handles

| # | PART NO. | QTY. | DESCRIPTION |
|----|----------|------|------------------------------|
| 1 | 593028 | 1 | LH CONTROL COVER |
| 2 | 593026 | 1 | RH CONTROL COVER |
| 3 | 593022 | 1 | RH CONTROL MOUNT |
| 4 | 109015 | 11 | 1/4-20 NUT CLIP |
| 5 | 105004 | 11 | 1/4 STD. LOCKWASHER |
| 6 | 100252 | 11 | 1/4-20 X 3/4 HHCS |
| 7 | 423140 | 2 | 3/4" 2 BOLT BEARING |
| 8 | 592024 | 1 | CONTROL PIVOT RIGHT |
| 9 | 592060 | 1 | HANDLE BAR w / STOP WELDMENT |
| 10 | 104257 | 1 | 3/8-16 NYLOCK |
| 11 | 100294 | 1 | 3/8-16 - 1-1/2 HHCS |
| 12 | 823221 | 2 | 10 MM BALL STUD |
| 13 | 104256 | 2 | 5/16-18 NYLOC NUT |
| 14 | 592041 | 1 | HANDLE RH w / GRIP |
| 15 | 523032 | 1 | HANDLE GRIP |
| 16 | 523033 | 1 | HANDLE PLUG |
| 17 | 100274 | 2 | 5/16-18 X 1-1/4 HHCS |
| 18 | 109001 | 2 | 5/16-18 WHIZLOCK NUT |
| 19 | 105005 | 1 | 5/16 LOCKWASHER - HEAVY |
| 20 | 253075 | 1 | CABLE ANCHOR SPACER |
| 21 | 823201 | 1 | ANTI BUCK CYLINDER |

Control Components - LH Handles

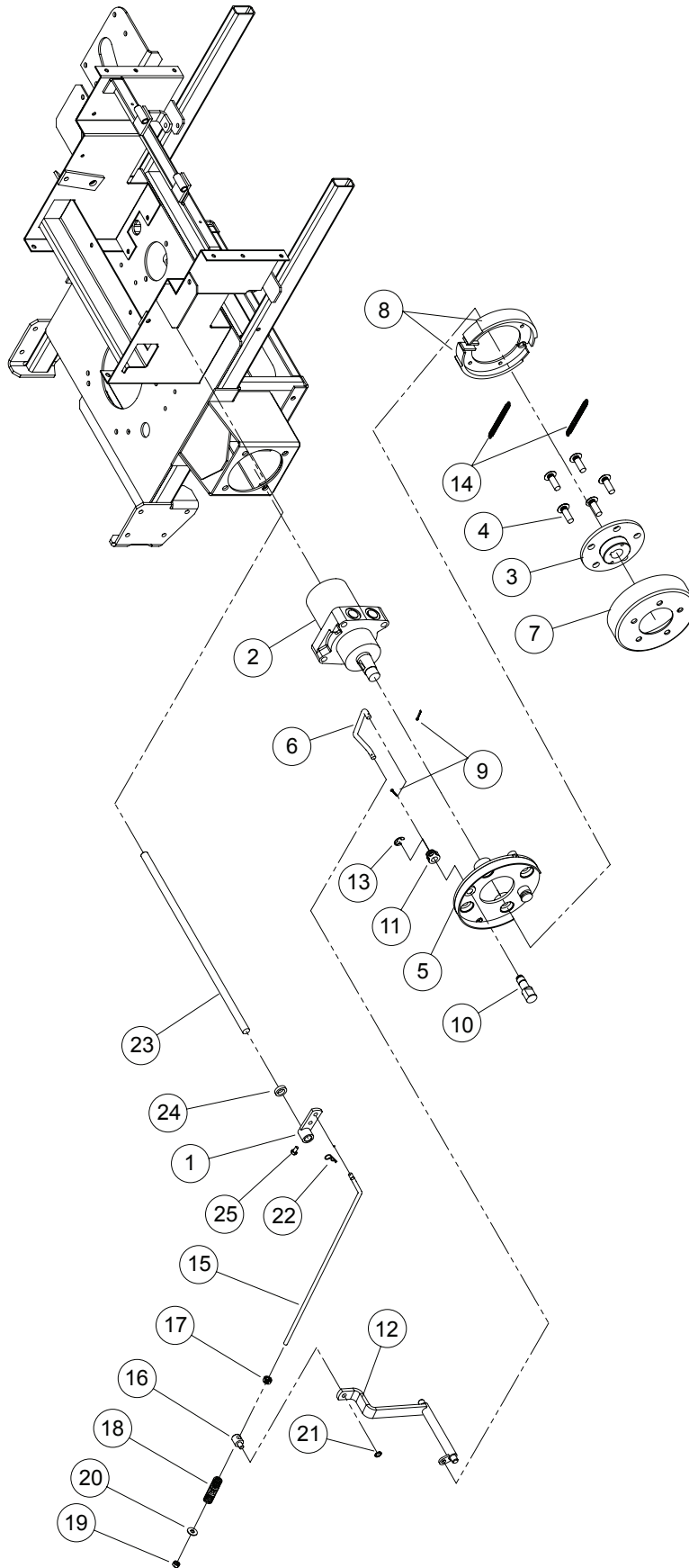




Control Components - LH Handles

| # | PART NO. | QTY. | DESCRIPTION |
|----|----------|------|-----------------------------|
| 1 | 593026 | 1 | RH CONTROL COVER |
| 2 | 593028 | 1 | LH CONTROL COVER |
| 3 | 593024 | 1 | LH CONTROL MOUNT |
| 4 | 109015 | 11 | 1/4-20 NUT CLIP |
| 5 | 105004 | 11 | 1/4 STD. LOCKWASHER |
| 6 | 100252 | 11 | 1/4-20 X 3/4 HHCS |
| 7 | 423140 | 2 | 3/4" 2 BOLT BEARING |
| 8 | 592026 | 1 | CONTROL PIVOT LEFT |
| 9 | 592060 | 1 | HANDLE BAR w / STOP WELDMNT |
| 10 | 100294 | 1 | 3/8-16 - 1-1/2 HHCS |
| 11 | 104257 | 1 | 3/8-16 NYLOCK |
| 12 | 823221 | 2 | 10 MM BALL STUD |
| 13 | 104256 | 2 | 5/16-18 NYLOC NUT |
| 14 | 592042 | 1 | HANDLE LH w / GRIP |
| 15 | 523032 | 1 | HANDLE GRIP |
| 16 | 523033 | 1 | HANDLE PLUG |
| 17 | 593048 | 1 | SWITCH MOUNT - NEUTRAL |
| 18 | 107519 | 2 | 5/16-18 X 1/2 CARR BOLT |
| 19 | 109001 | 4 | 5/16-18 WHIZLOCK NUT |
| 20 | 100274 | 2 | 5/16-18 X 1-1/4 HHCS |
| 21 | 593041 | 1 | NEUTRAL SWITCH |
| 22 | 105005 | 1 | 5/16 LOCKWASHER - HEAVY |
| 23 | 253075 | 1 | CABLE ANCHOR SPACER |
| 24 | 823201 | 1 | ANTI BUCK CYLINDER |

Brake Components - Right Hand

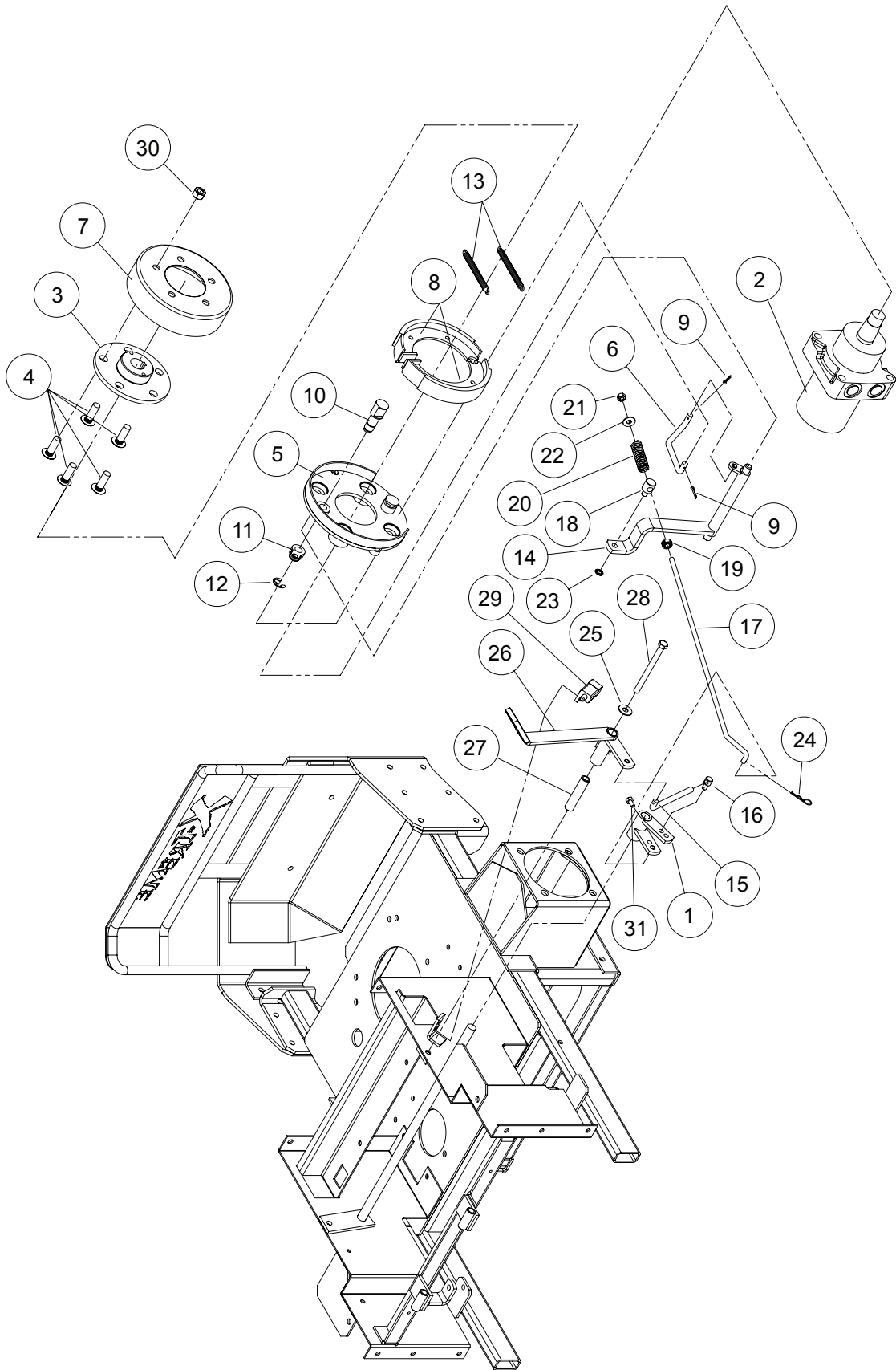




Brake Components - Right Hand

| # | PART NO. | QTY. | DESCRIPTION |
|----|----------|------|----------------------------------|
| 1 | 422049 | 1 | BRAKE CRANK WLDMNT - PLATED |
| 2 | 583325 | 1 | WHEEL MOTOR |
| 3 | 592094 | 1 | WHEEL HUB – SHOE BRAKE |
| 4 | 103031 | 5 | 1/2-20 X 1 3/8 UNF PRESS IN STUD |
| 5 | 592062 | 1 | BACKPLATE - DRUM |
| 6 | 533032 | 1 | SHOE BRAKE LINK |
| 7 | 423310 | 1 | BRAKE DRUM – 180 |
| 8 | 423276 | 2 | BRAKE SHOE |
| 9 | 106753 | 2 | 3/32 X 3/4 COTTER PIN |
| 10 | 423296 | 1 | BRAKE CAM |
| 11 | 423308 | 1 | BRAKE CAM ARM |
| 12 | 532026 | 1 | BRAKE CONTROL - RH |
| 13 | 108500 | 1 | E-RING FOR 5/8 DIA. |
| 14 | 423281 | 2 | BRAKE SPRING |
| 15 | 423128 | 1 | PARK BRAKE LINK |
| 16 | 423130 | 1 | PARK BRAKE SWIVEL |
| 17 | 523112 | 1 | 5/16 CLAMP COLLAR |
| 18 | 523024 | 1 | SPRING |
| 19 | 104256 | 1 | 5/16 NYLOCK NUT |
| 20 | 105258 | 1 | 5/16 FLAT WASHER |
| 21 | 363177 | 1 | 3/8 PUSH NUT |
| 22 | 363165 | 1 | #3 HAIRPIN COTTOR |
| 23 | 423368 | 1 | BRAKE CROSS SHAFT |
| 24 | 363170 | 1 | BLADE SPACER |
| 25 | 100501 | 1 | 1/4-28 X 1/2 HHCS |

Brake Components - Left Hand

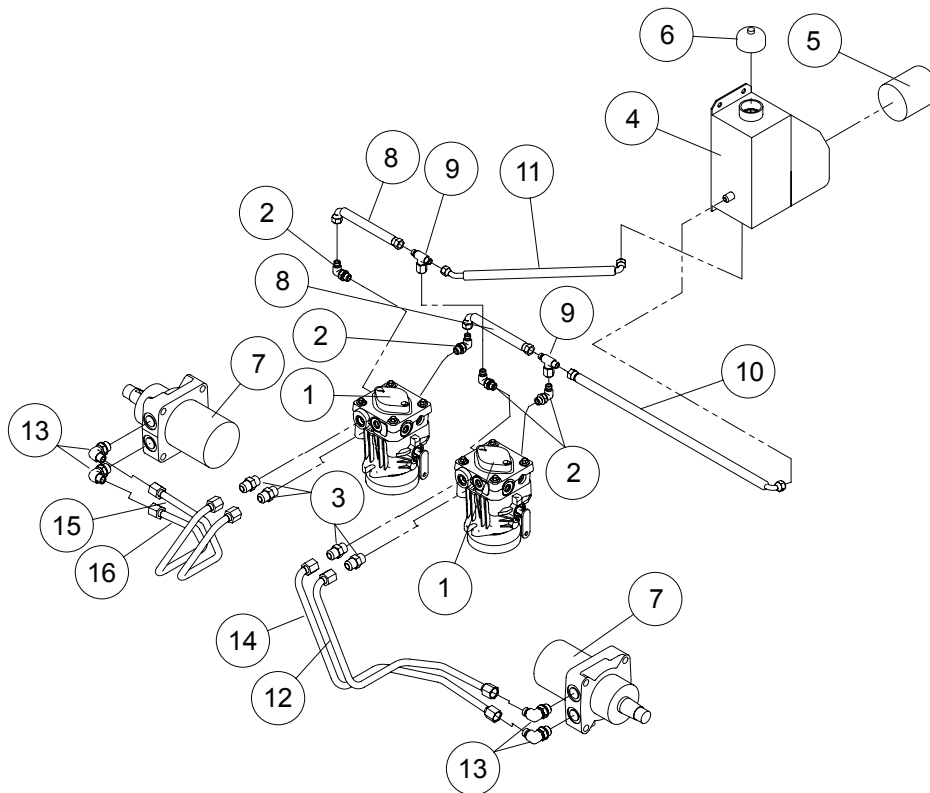


Brake Components - Left Hand

| # | PART NO. | QTY. | DESCRIPTION |
|----|----------|------|----------------------------------|
| 1 | 422146 | 1 | PARK BRAKE CRANK |
| 2 | 583325 | 1 | WHEEL MOTOR |
| 3 | 592094 | 1 | WHEEL HUB – SHOE BRAKE |
| 4 | 103031 | 5 | 1/2-20 X 1 3/8 UNF PRESS IN STUD |
| 5 | 592062 | 1 | BACKPLATE - DRUM |
| 6 | 533032 | 1 | SHOE BRAKE LINK |
| 7 | 423310 | 1 | BRAKE DRUM – 180 |
| 8 | 423276 | 2 | BRAKE SHOE |
| 9 | 106753 | 2 | 3/32 X 3/4 COTTER PIN |
| 10 | 423296 | 1 | BRAKE CAM |
| 11 | 423308 | 1 | BRAKE CAM ARM |
| 12 | 108500 | 1 | E-RING FOR 5/8 DIA. |
| 13 | 423281 | 2 | BRAKE SPRING |
| 14 | 532028 | 1 | BRAKE CONTROL - LH |
| 15 | 423350 | 1 | BRAKE LINK |
| 16 | 363029 | 1 | .312 ROD SWIVEL |
| 17 | 423128 | 1 | PARK BRAKE LINK |
| 18 | 423130 | 1 | PARK BRAKE SWIVEL |
| 19 | 523112 | 1 | 5/16 CLAMP COLLAR |
| 20 | 523024 | 1 | SPRING |
| 21 | 104256 | 1 | 5/16 NYLOCK NUT |
| 22 | 105258 | 1 | 5/16 FLAT WASHER |
| 23 | 363177 | 1 | 3/8 PUSH NUT |
| 24 | 363165 | 1 | #3 HAIRPIN COTTOR |
| 25 | 105260 | 1 | 3/8 STANDARD FLAT WASHER |
| 26 | 422086 | 1 | Z- PARK LEVER W/GRIP |
| 27 | 363105 | 1 | IDLER BUSHING |
| 28 | 100305 | 1 | 3/8-16 X 4-1/2 HHCS |
| 29 | 523034 | 1 | PARK BRAKE SWITCH |
| 30 | 103023 | 1 | 1/2-20 LUG NUT |
| 31 | 100501 | 1 | 1/4-28 X 1/2 HHCS |

Hydro Components

| # | PART NO. | QTY. | DESCRIPTION |
|----|----------|------|------------------------|
| 1 | 533079 | 2 | PUMP W/RTN - PARKER |
| 2 | 453074 | 4 | 90° ADAPTER |
| 3 | 583126 | 4 | STRAIGHT ADAPTER |
| 4 | 423307 | 1 | OIL TANK |
| 5 | 423361 | 1 | OIL FILTER |
| 6 | 583406 | 1 | OIL TANK CAP |
| 7 | 583325 | 2 | WHEEL MOTOR |
| 8 | 453127 | 2 | PUMP TO PUMP FEED LINE |
| 9 | 453106 | 2 | SWIVEL TEE |
| 10 | 593073 | 1 | HOSE RETURN |
| 11 | 423373 | 1 | PUMP FEED LINE - Z |
| 12 | 533113 | 1 | RUBBER LINE L. OUTSIDE |
| 13 | 523058 | 4 | RETURN ADAPTER |
| 14 | 533113 | 1 | RUBBER LINE L. INSIDE |
| 15 | 533113 | 1 | RUBBER LINE R. INSIDE |
| 16 | 533113 | 1 | RUBBER LINE R. OUTSIDE |

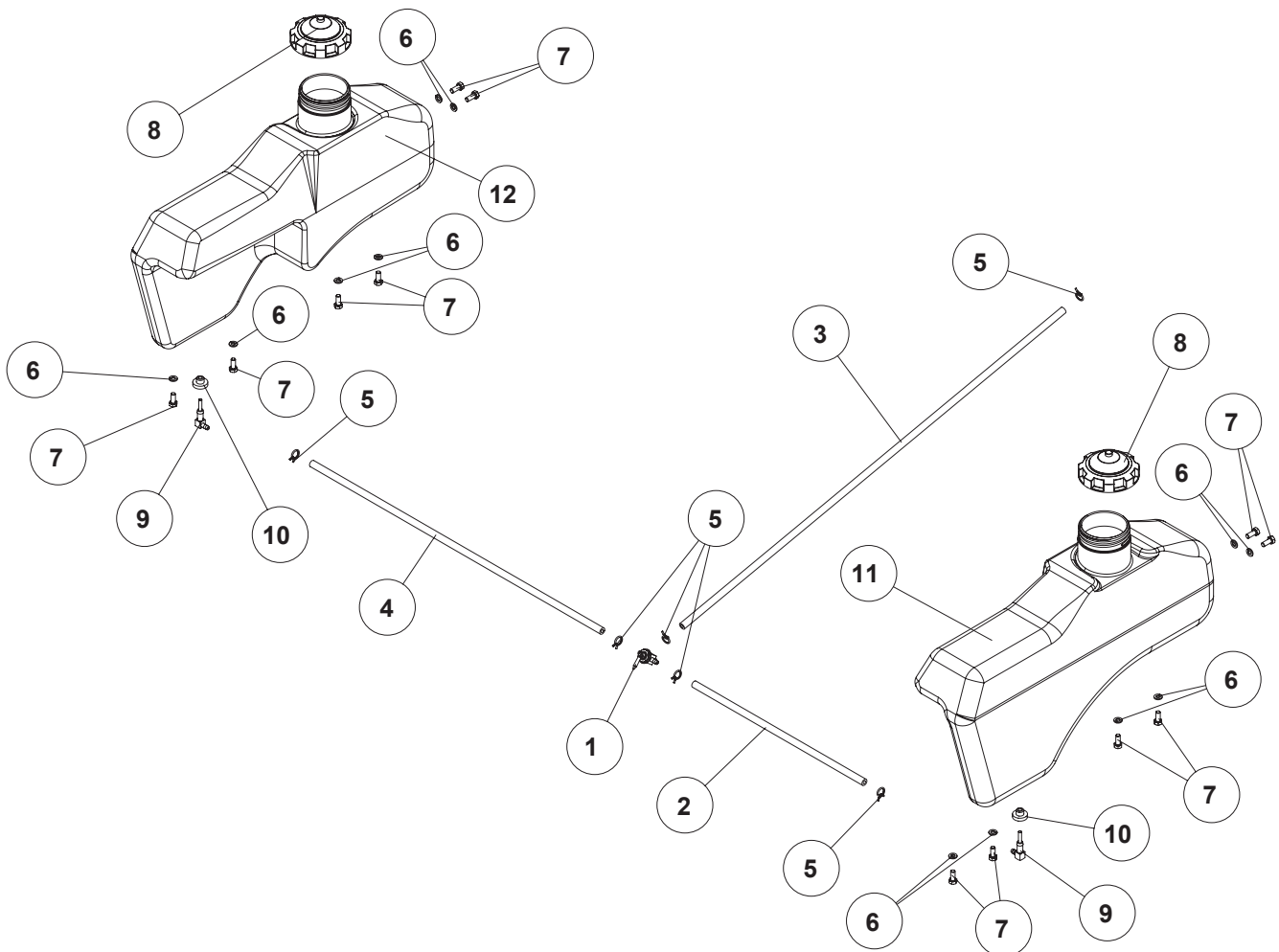


Fuel Components

| # | PART NO. | QTY. | DESCRIPTION |
|----|----------|------|-----------------------|
| 1 | 583050 | 1 | FUEL VALVE |
| 2 | 533085 | 1 | FUEL LINE - 21 1/2" |
| 3 | 583185 | 1 | FUEL LINE - 39" |
| 4 | 583186 | 1 | FUEL LINE - 29" |
| 5 | 363098 | 6 | FUEL LINE CLAMP |
| 6 | 105005 | 12 | 5/16 LOCK WASHER |
| 7 | 100271 | 12 | 5/16-18 X 3/4 HHCS |
| 8 | 823179 | 2 | FUEL CAP - LARGE |
| 9 | 583183 | 2 | FUEL TANK ADAPTER |
| 10 | 393042 | 2 | VALVE GROMMET |
| 11 | 533019 | 1 | FUEL TANK / FENDER LH |
| 12 | 533018 | 1 | RH FUEL TANK |

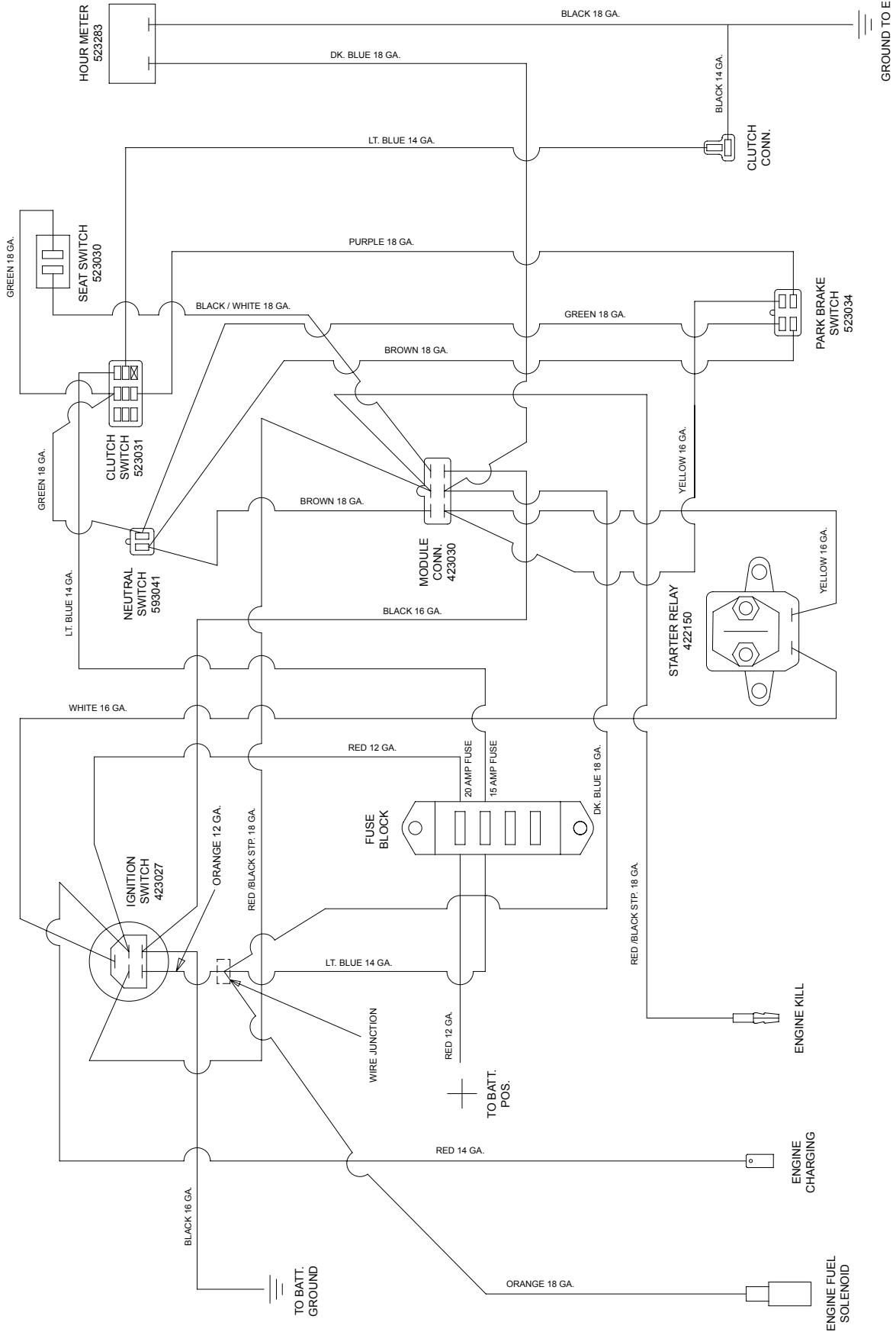
NOTE:

- A:** THERE ARE NO REPLACEMENT DECALS FOR TANKS. DUE TO THEIR MOLDED INTO THE TANK.



ENCORE PART # 423351
 WIRE HARNESS FOR 42K17Z ; 17 HP KAWASAKI
 WIRE HARNESS FOR 48K19Z ; 19 HP KAWASAKI
 WIRE HARNESS FOR 48K19X ; 19 HP KAWASAKI
 WIRE HARNESS FOR 52K21Z ; 21 HP KAWASAKI
 WIRE HARNESS FOR 52K23X ; 23 HP KAWASAKI

WIRE HARNESS FOR 60K25Z ; 25 HP KAWASAKI
 WIRE HARNESS FOR 60K25X ; 25 HP KAWASAKI



X-TREME48

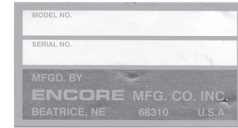
Decal List



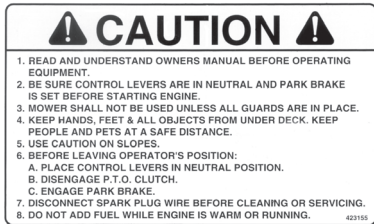
1



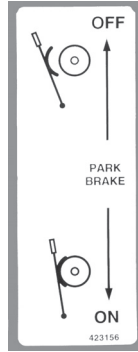
2



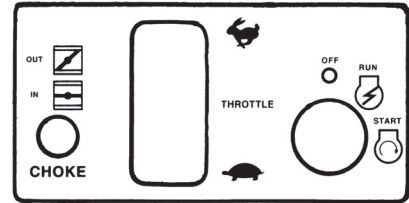
3



4



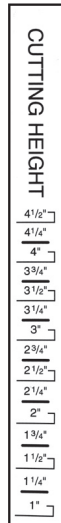
5



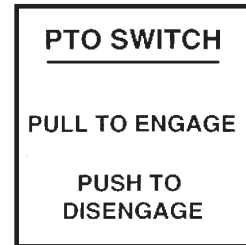
6



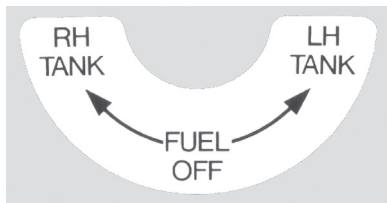
7



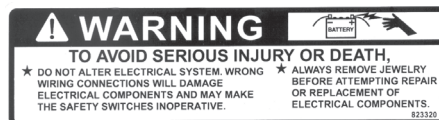
8



9



10



11



12

X-TREME⁴⁸

Decal List

| # | PART NO. | QTY. | DESCRIPTION |
|----|----------|------|-----------------------|
| 1 | 363001 | 1 | CAUTION DECAL |
| 2 | 363023 | 2 | DANGER DECAL |
| 3 | 363026 | 1 | SERIAL NO. PLATE |
| 4 | 423155 | 1 | RIDER CAUTION DECAL |
| 5 | 423156 | 1 | PARK LEVER DECAL |
| 6 | 423197 | 1 | CONTROL DECAL |
| 7 | 423354 | 1 | OIL DECAL - SYN. |
| 8 | 423379 | 1 | CUT GAGE DECAL |
| 9 | 523021 | 1 | PTO DECAL |
| 10 | 583023 | 1 | LABEL - FUEL VALVE |
| 11 | 823320 | 1 | BATTERY WARNING DECAL |
| 12 | 533087 | 1 | FRONT X48 LABEL |
| 13 | 423196 | 1 | BELT ROUTING DECAL |

Notes

Notes

