

X-TREME™

52K23X

PARTS MANUAL



Table of Contents

■ QUICK REFERENCE GUIDE FOR 52K23X.....	A - 1
■ DECK COMPONENTS	B - 1
■ DECK LIFT COMPONENTS	C - 1
■ FRAME COMPONENTS.....	D - 1
■ DRIVE COMPONENTS	E - 1
■ CONTROL COMPONENTS	
LINKAGE PARTS.....	F - 1
RIGHT HAND CONTROL BOX PARTS	F - 3
LEFT HAND CONTROL BOX PARTS	F - 5
■ BRAKE COMPONENTS	
RIGHT HAND SIDE	G - 1
LEFT HAND SIDE.....	G - 3
■ HYDRO COMPONENTS	H - 1
■ FUEL COMPONENTS	I - 1
■ ELECTRICAL SCHEMATICS.....	J - 1
■ DECAL LIST.....	K - 1
■ BLANK NOTE PAGES	L - 1

52K23X

Engine

23hp Kawasaki electric FH680V-CS28

Blades

823004 18"blade
363293 18" low lift blade
823353 18" mulch blade
523449 18" super hi-lift blade

Belts

523472 blade drive belt
423272 pump drive belt

Tires

533024 wheel/tire assy
533069 drive tire (23x9.5X12)
583058 rim w/ valvestem
523280 front caster complete
123049 tire (13x5x6 front caster)

Spindles

583106 spindle assy comp.
583111 housing
363350 bearing
583112 shaft
583113 brg. Spacer tube

Transmission

583325 wheel motor TJ0230US080AAAJ **Seal Kit # 583520**
533153 pump - HG w/RN SV Seal Kit # H-70525
423361 hydro filter

***synthetic hydro oil capacity approx. 2.7 qts.

Throttle 363352

Choke 423153

Wire Harness 423351

Safety Module 423030

Electrical Components

423027 Ignition Switch
422150 Starter Relay
523034 Park Brake Switch
593041 Neutral Switch
523031 PTO Switch
523030 Seat Switch
523283 Hour Meter

Clutch 603078

Torque Specs

65 ft-lbs blade bolt
90 ft-lbs nut on top of spindle
50 ft-lbs clutch bolt
175-200 ft-lbs wheel motor axle nut

Pulleys

423231 pump drive pulley
523328 tensioner pulley-pump belt
533052 pump pulley
533114 tensioner pulley-blade drive belt
373068 stationary idler pulley-deck
523496 pulley-blade spindle

Front Caster Bearings

533086 bearing

Brakes

592094 wheel hub-shoe brake
533032 drum brake link
423310 brake drum
423276 brake shoe
423281 brake spring

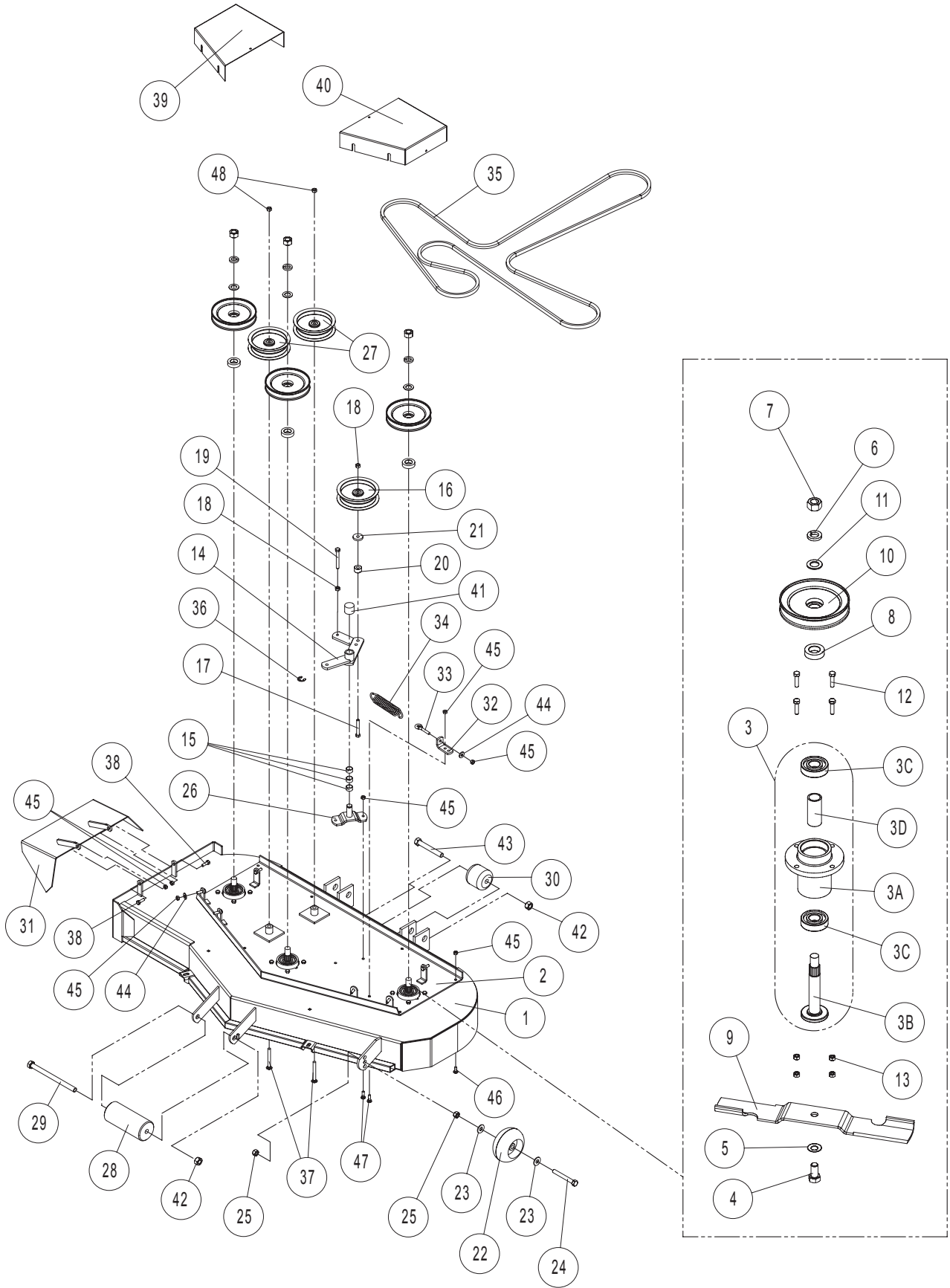
Seat

583077 seat complete w/ tracks
583089 seat cushion
583090 back cushion
593097 molded arm rest

Muffler 533058

Gasket 483098

X-TREME⁵² Deck Components





Deck Components

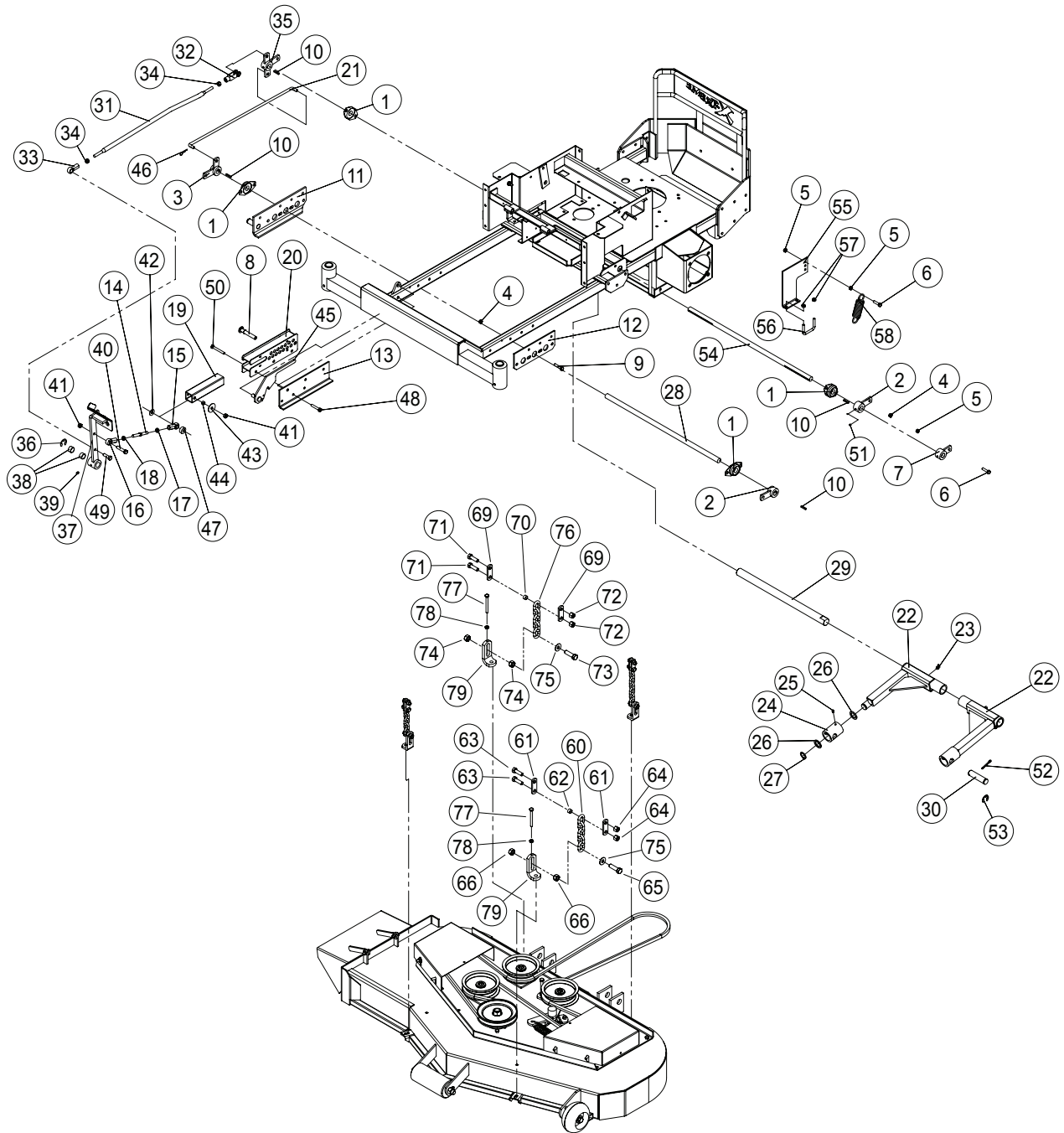
#	PART NO.	QTY.	DESCRIPTION
1	532004	1	X52 MOWER DECK
2	532006	1	SUB PLATE X52
3	583106	3	BLADE SPINDLE ASSY
3A	583111	3	SPINDLE HOUSING
3B	583112	3	SPINDLE SHAFT
3C	363350	6	BEARING - BLADE SPINDLE
3D	583113	3	BEARING SPACER TUBE
4	100355	3	5/8-11 X 1-1/4 HHCS
5	583108	3	5/8 DISC SPRING WASHER
6	105010	3	3/4 LOCK WASHER
7	104511	3	3/4-16 HEX NUT
8	583110	3	PULLEY SPACER
9	823004	3	18" HI LIFT BLADE
10	523496	3	6.25" HEX PULLEY
11	105269	3	3/4 SAE FLAT WASHER
12	100274	12	5/16-18 X 1-1/4 HHCS
13	104256	12	5/16-18 NYLOC NUT
14	522164	1	Z-DECK TENSIONER W/ BSHNGS
15	363089	3	BRONZE BUSHINGS
16	533114	1	ENGAGEMENT IDLER
17	100298	1	3/8-16 X 2-1/2 HHCS
18	109007	2	3/8-16 WHIZ LOCK NUT
19	100300	1	3/8-16 X 3 HHCS
20	823309	1	FRAME SPACER
21	373089	1	RETAINING WASHER
22	423023	1	DECK ROLLER
23	105264	2	1/2 STD FLAT WASHER
24	100335	1	1/2-13 X 4 HHCS
25	104509	2	1/2-13 HEX NUT
26	522104	1	OFFSET PIVOT
27	373068	2	ENGAGEMENT IDLER
28	603023	1	FRONT ANT-SCALP ROLLER
29	100351	1	5/8-11 X 8-1/2 HHCS
30	523084	1	REAR DECK ROLLER
31	582025	1	GRASS DEFLECTOR W/LDMNT
32	523094	1	SPRING MOUNT
33	363080	1	RIGHT EYEBOLT
34	523327	1	FLOATING IDLER SPRING
35	523472	1	DECK DRIVE BELT
36	108509	1	3/4 E-RING
37	107506	2	3/8-16 X 3-1/4 CARRIAGE BOLT
38	100273	2	5/16-18 X 1 HHCS
39	532018	1	X52 RH BELT COVER



Deck Components

#	PART NO.	QTY.	DESCRIPTION
40	532020	1	X52 LH BELT COVER
41	103009	1	CAPLUG 1-1/4
42	104261	2	5/8-11 HEX NUT
43	100346	1	5/8-11 X 4-1/2 HHCS
44	105258	2	5/16 STD FLAT WASHER
45	104256	7	5/16-18 NYLOC NUT
46	107503	1	5/16-18 X 3/4 CARR. HEAD
47	107509	2	5/16-18 x 1 CARR. BOLT
48	109007	2	3/8-16 WHIZ LOCK NUT

X-TREME⁵² Deck Lift Components





Deck Lift Components

#	PART NO.	QTY.	DESCRIPTION
1	423140	4	3/4 2 BOLT BEARING
2	422041	2	DECK LIFT ARM
3	422043	1	DECK LIFT CRANK
4	104256	2	5/16 NYLOCK NUT
5	109001	3	5/16-18 WHIZLOCK NUT
6	100274	2	5/16-18 X 1-1/4 HHCS
7	422056	1	SPRING ASSIST ARM
8	109036	1	DECK HEIGHT PIN
9	100275	1	5/16-18 X 1 1/2 HHCS
10	107255	4	3/16 X 3/16 X 1 MACHINE KEY
11	422128	1	LIFT MOUNT
12	423344	1	LH LIFT MOUNT
13	423322	1	HEIGHT GAGE MOUNT
14	343158	1	FOOT PEDAL LINK
15	523104	1	ROD END RH 3/8
16	343160	1	ROD END LHF 3/8
17	104754	1	3/8-24 HEX JAM NUT
18	109037	1	3/8-24 LH HEX JAM NUT
19	343093	1	DECK HEIGHT TUBE
20	342016	1	HEIGHT CONTROL
21	523474	1	DECK LIFT ROD
22	532008	1	DECK ARM WELDMENT
23	111008	2	1/4-28 TAPER THREAD - 90 DEGREE ZERK
24	823074	1	DECK ARM SWIVEL
25	111004	1	1/4-28 ZERK
26	823015	2	DECK ARM WASHER RAW
27	108502	1	1.0 EXTERNAL SNAP RING
28	533010	1	LIFT SHAFT- FRONT
29	823050	1	DECK ARM SHAFT
30	823333	2	DECK ATTACH PIN
31	533060	1	DECK LIFT ROD (SEE NOTE 1 BEFORE ORDERING)
32	363192	1	LARGE YOKE (3/8")
32A	533083	1	CLEVIS END - 1/2"
33	423353	1	OFFSET ROD END (3/8")
33A	533084	1	ROD END - 1/2"
34	109008	2	3/8-24 WHIZLOCK NUT
34A	104755	2	1/2-20 JAM NUT
35	532036	1	DECK LIFT HUB
36	108509	1	E-RING 3/4 DIA.
37	532034	1	DECK LIFT PEDAL
38	363089	2	BRONZE BUSHINGS
39	111004	1	1/4-28 ZERK
40	100295	1	3/8-16 X 1-3/4 HHCS



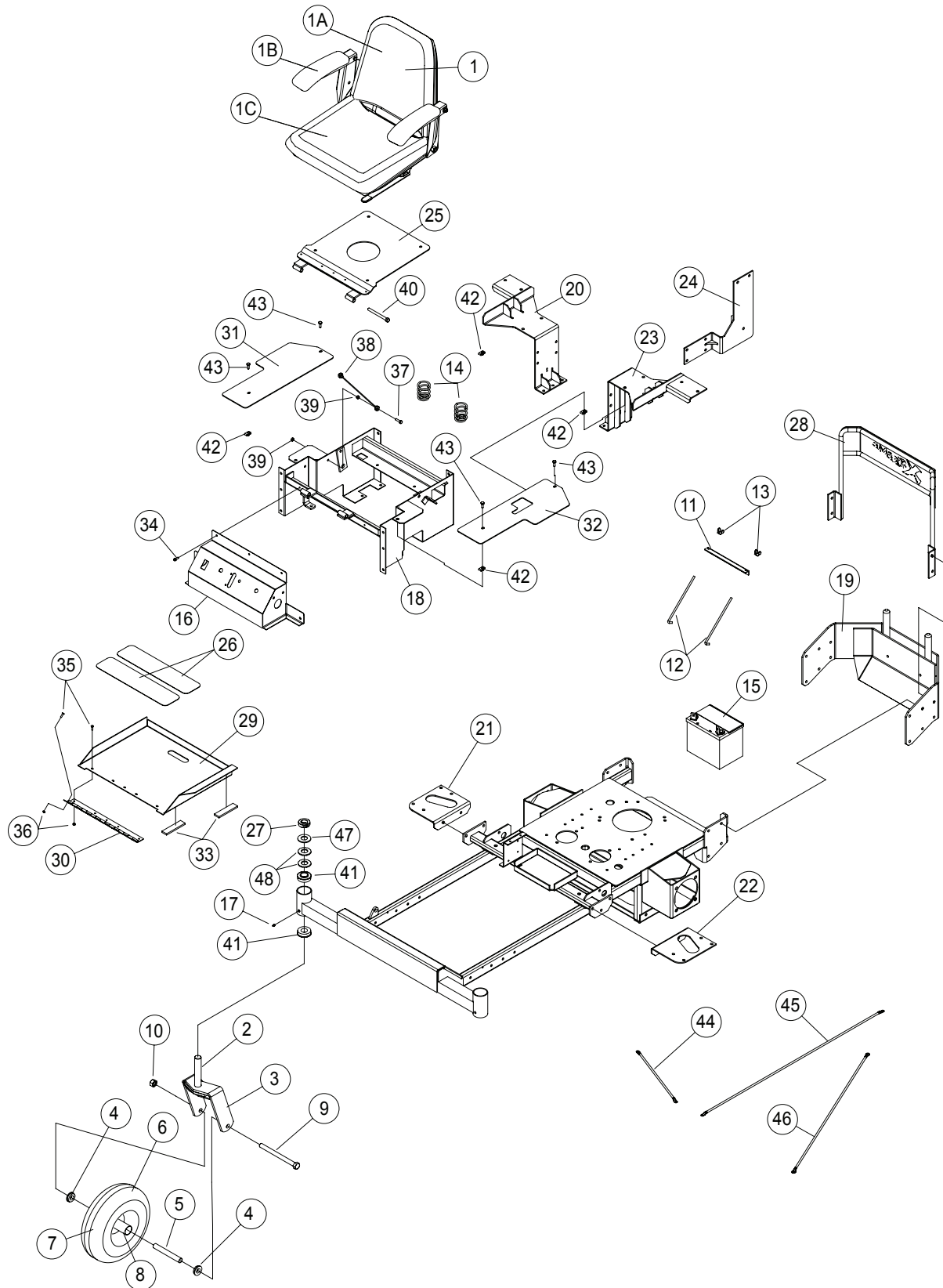
Deck Lift Components

#	PART NO.	QTY.	DESCRIPTION
41	104257	2	3/8-16 NYLOCK NUT
42	105260	1	3/8 STANDARD FLAT WASHER
43	483019	1	RT. HAND IDLER WASHER
44	363174	1	EYE BOLT SPACER
45	532032	1	LIFT LOCK WELDMENT
46	363165	1	#3 HAIRPIN COTTOR
47	483017	1	RH IDLER SPACER
48	100276	1	5/16-18 X 1-3/4 HHCS
49	100293	1	3/8-16 x 1 1/4 HHCS
50	100279	1	5/16-18 X 2-1/2 HHCS
51	103292	1	1/4-28 SETSCREW
52	106778	2	3/16 X 1-1/2 COTTER PIN
53	108510	2	7/8 E-RING
54	423096	1	REAR DECK LIFT SHAFT
55	423382	1	SPRING MOUNT
56	523375	1	U-BOLT SQ. 2"
57	104256	2	5/16-18 NYLOCK
58	523327	1	FLOATING IDLER SPRING
59	423358	1	DECK LIFT ANGLE
60	423359	1	FRONT CHAIN
61	423356	2	LIFT CHAIN LINK
62	363174	1	EYE BOLT SPACER
63	100293	2	3/8-16 x 1 1/4 HHCS
64	104257	2	3/8-16 NYLOCK NUT
65	100311	1	7/16-14 X 1-1/2
66	109027	2	7/16-14 WHIZLOCK NUT
67	105260	1	3/8 STANDARD FLAT WASHER
68	423358	1	DECK LIFT ANGLE
69	423356	2	LIFT CHAIN LINK
70	363174	1	EYE BOLT SPACER
71	100293	2	3/8-16 x 1 1/4 HHCS
72	104257	2	3/8-16 NYLOCK NUT
73	100311	1	7/16-14 X 1-1/2
74	109027	2	7/16-14 WHIZLOCK NUT
75	105260	1	3/8 STANDARD FLAT WASHER
76	423360	1	REAR CHAIN
77	100008	4	1/4-20 X 2 HHCS
78	104758	4	1/4-20 HEX JAM NUT
79	533112	4	ADJUSTABLE CHAIN MOUNT

NOTE:

- 1 UNITS WITH SERIAL NUMBER BELOW 50242, WILL ALSO NEED TO ORDER ITEM 32A (533083), ITEM 33A (533084), & 2 OF ITEM 34A (104755)

X-TREME⁵² Frame Components





Frame Components

#	PART NO.	QTY.	DESCRIPTION
1	583077	1	SEAT LT. GREY W/ TRACK
1A	583090	--	BACK SEAT CUSHION
1B	593097	--	MOLDED ARM REST
1C	583089	--	SEAT CUSHION
2	-----	--	N/A
3	522097	1	13" STRUT WELDMENT
4	533086	2	BEARING-FRONT WHEEL 3/4 BALL
5	523098	1	LARGE AXLE TUBE
6	523280	1	FRONT WHEEL COMPLETE
7	123049	1	TIRE (13 X 5 X 6)
8	533078	1	FRONT CASTER RIM
9	100349	1	5/8-11 X 7-1/2 HHCS
10	104261	1	5/8-11 HEX NUT
11	423011	1	HOLD DOWN ANGLE
12	423172	2	BATTERY HOLD DOWN RODS
13	109012	2	1/4 WING NUT
14	523278	2	SEAT SPRING
15	423142	1	BATTERY, U1-9
16	422148	1	CONTROL PANEL - Z
17	111001	1	1/8 NPT STRAIGHT ZERK
18	532012	1	SEAT FRAME WLDMNT - PNTD
19	532016	1	REAR GUARD
20	532022	1	RH REAR TANK MOUNT
21	533042	1	FRONT TANK PLATE RH
22	533044	1	FRONT TANK PLATE LH
23	532024	1	LH REAR TANK MOUNT
24	422136	1	OIL TANK MOUNT
25	422132	1	SEAT PLATE
26	343110	3	STEP TREAD - Z34
27	363145	2	1" CLAMP COLLAR
28	532010	1	AC GUARD WELDMENT
29	533026	1	FOOT PLATE
30	523105	1	HINGE
31	533046	1	RH SEAT PANEL
32	533048	1	LH SEAT PANEL
33	363201	2	GAS TANK PAD
34	102000	1	SELF TAPPING SCREW #12-24 X 5/8
35	101039	2	#10-24 X 5/8 PAN HD. SCREW
36	104252	2	#10 NYLOCK NUT
37	100004	1	1/4-20 x 1 HHCS
38	523044	1	SEAT CABLE
39	109000	2	1/4-20 WHIZ LOCK NUT
40	100303	1	3/8-16 X 4 HHCS

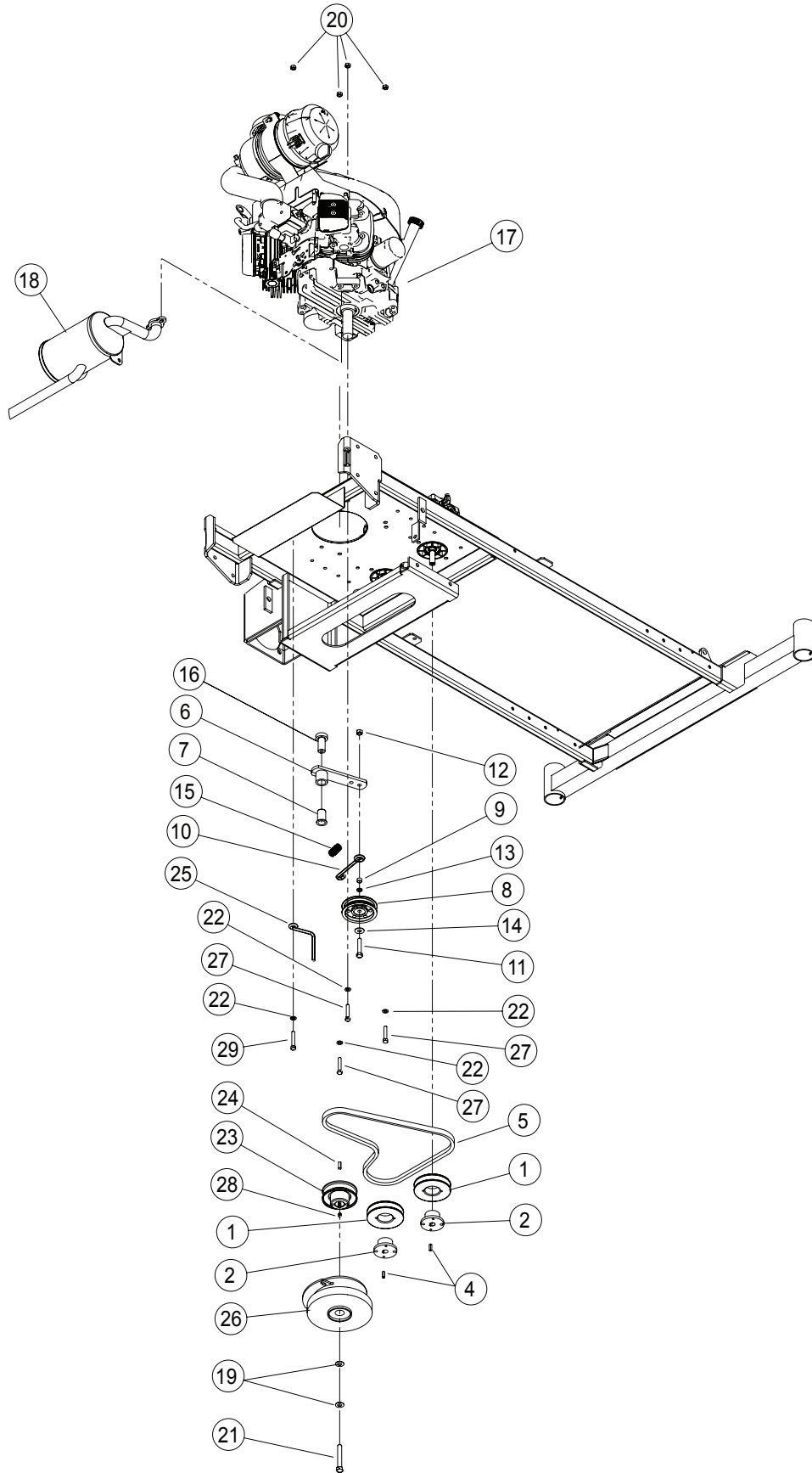


Frame Components

#	PART NO.	QTY.	DESCRIPTION
41	363187	4	7/8 FLANGE BEARING
42	109015	4	1/4-20 NUT CLIP
43	100252	4	1/4-20 X 3/4 HHCS
44	423116	1	POSITIVE CABLE - SHORT
45	423117	1	POSITIVE CABLE - LONG
46	423118	1	NEGATIVE CABLE
47	583171	2	CASTER WASHER
48	105501	4	WAVY WASHER

X-TREME52

Drive Components

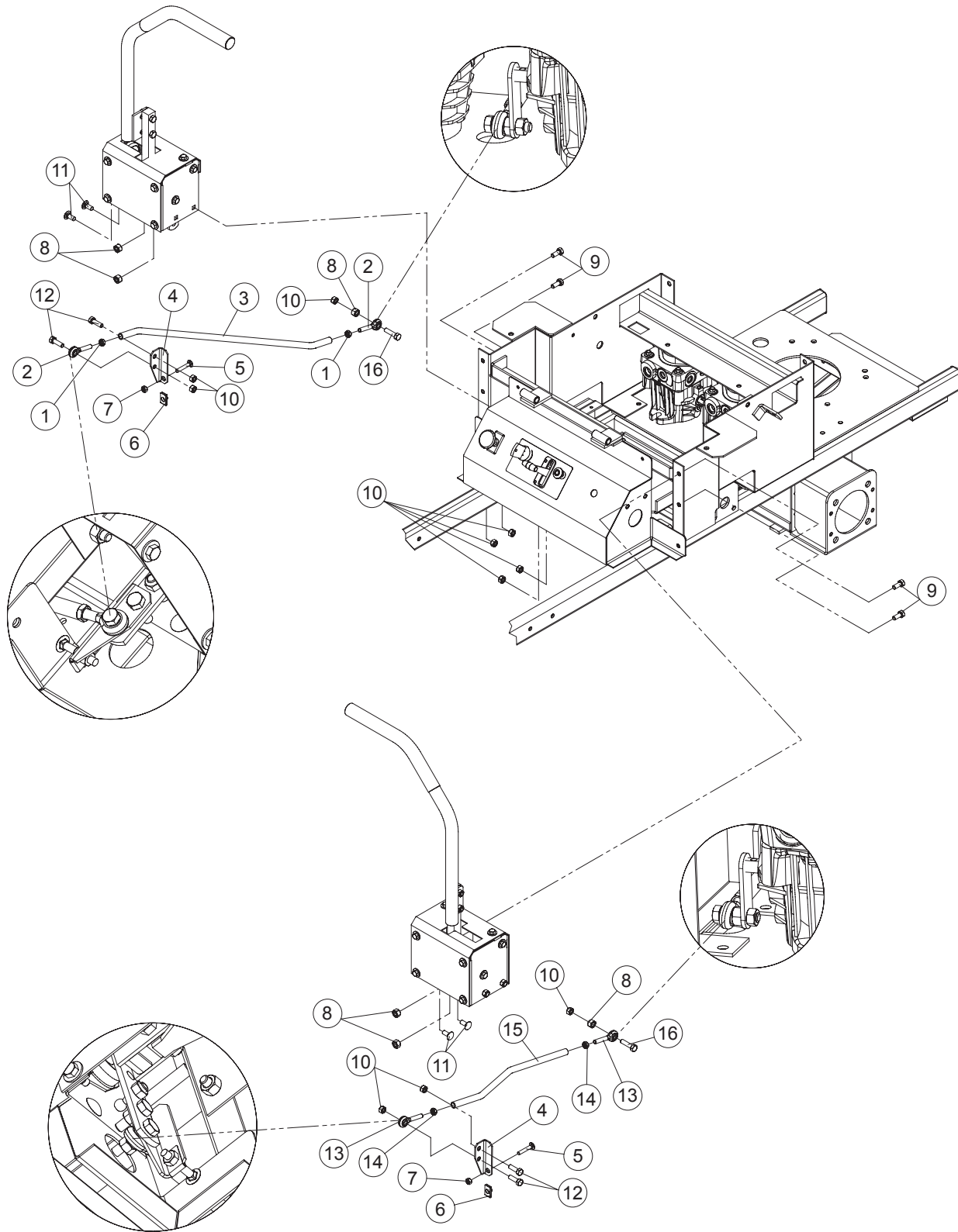




Drive Components

#	PART NO.	QTY.	DESCRIPTION
1	533052	2	PUMP PULLEY
2	423178	2	15MM TAPER HUB
3	453074	4	90° ADAPTER
4	453102	2	PUMP KEY
5	423272	1	PUMP DRIVE BELT
6	422025	1	TENSIONER W/ BUSHING
7	523111	1	3/4 PLASTIC BUSHING
8	523328	1	FLAT IDLER
9	363174	1	EYE BOLT SPACER
10	423122	1	PUMP TENSION ROD
11	100296	1	3/8-16 X 2 HHCS
12	109007	1	3/8-16 WHIZ LOCK NUT
13	105005	1	3/8 LOCK WASHER
14	105260	1	3/8 STANDARD FLAT WASHER
15	553007	1	IDLER SPRING
16	423175	1	IDLER PIVOT
17	N/A	1	ENGINE
18	533058	1	MUFFLER - 23/25 KAW
19	423069	2	7/16 DISC SPRING WASHER
20	104256	4	5/16-18 NYLOCK
21	100536	1	7/16-20 X 3 HHCS
22	363226	4	5/16 DISC SPRING WASHER
23	423231	1	DRIVE PULLEY – PUMP
24	107258	1	1/4 X 1/4 X 3/4 MACH. KEY
25	373070	1	BELT GUIDE - LONG
26	603078	1	ELECTRIC CLUTCH – 200 FT LBS
27	100276	3	5/16-18 X 1-3/4 HHCS
28	103293	1	5/16-18 SET SCREW
29	100277	1	5/16-18 X 2 HHCS

Control Components - Linkage

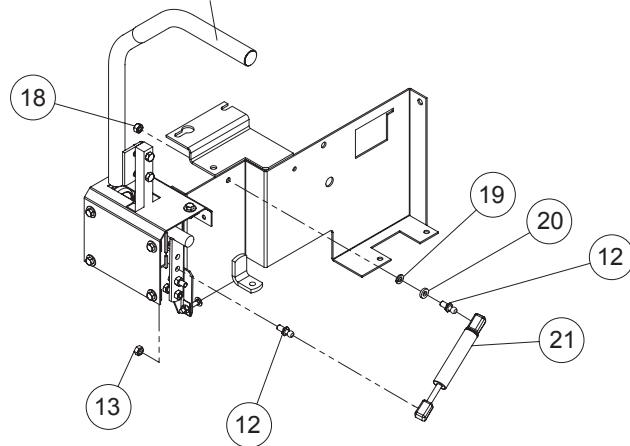
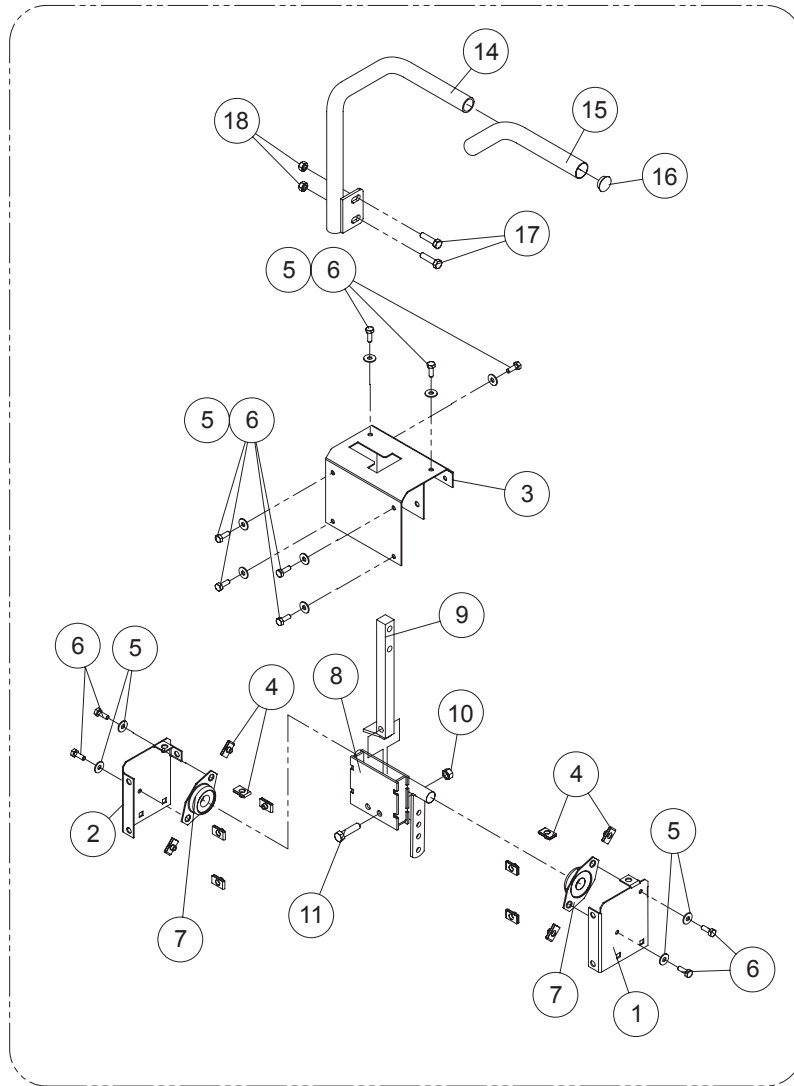




Control Components - Linkage

#	PART NO.	QTY.	DESCRIPTION
1	104752	2	5/16-24 JAM NUT
2	453082	2	5/16 ROD END
3	423318	1	CONTROL LINK - RH
4	423376	2	LEVER STOP ANGLE
5	107523	2	1/4-20 x 1-1/2 CARR HD BOLT
6	109015	2	1/4-20 NUT CLIP
7	109000	2	1/4-20 WHIZ LOCK NUT
8	104256	7	5/16 NYLOCK NUT
9	100271	4	5/16-18 X 3/4 HHCS
10	104256	10	5/16-18 WHIZLOCK
11	107503	4	5/16-18 X 3/4 CARR BOLT
12	100273	4	5/16-18 X 1 HHCS
13	453082	2	5/16 ROD END
14	104752	2	5/16-24 JAM NUT
15	423317	1	CONTROL LINK - LH
16	100274	2	5/16-18 X 1-1/4 HHCS

Control Components - RH Handles

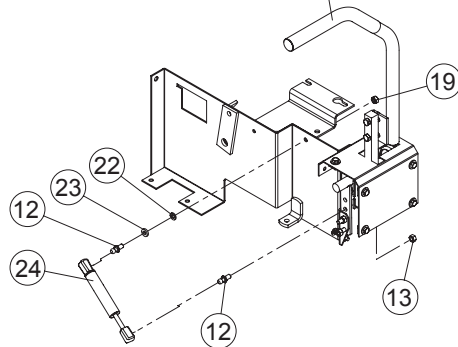
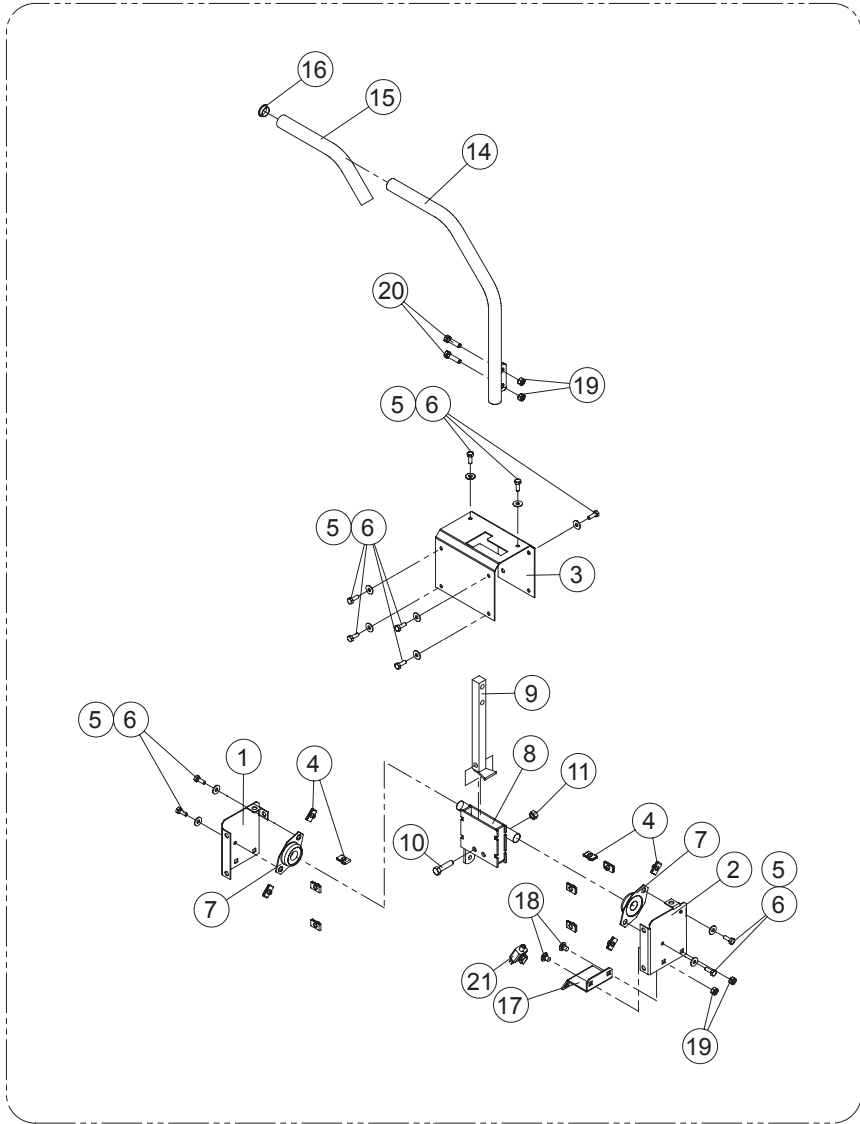




Control Components - RH Handles

#	PART NO.	QTY.	DESCRIPTION
1	593028	1	LH CONTROL COVER
2	593026	1	RH CONTROL COVER
3	593022	1	RH CONTROL MOUNT
4	109015	11	1/4-20 NUT CLIP
5	105004	11	1/4 STD. LOCKWASHER
6	100252	11	1/4-20 X 3/4 HHCS
7	423140	2	3/4" 2 BOLT BEARING
8	592024	1	CONTROL PIVOT RIGHT
9	592060	1	HANDLE BAR w / STOP WELDMENT
10	104257	1	3/8-16 NYLOCK
11	100294	1	3/8-16 - 1-1/2 HHCS
12	823221	2	10 MM BALL STUD
13	104256	2	5/16-18 NYLOC NUT
14	592041	1	HANDLE RH W / GRIP
15	523032	1	HANDLE GRIP
16	523033	1	HANDLE PLUG
17	100274	2	5/16-18 X 1-1/4 HHCS
18	109001	2	5/16-18 WHIZLOCK NUT
19	105005	1	5/16 LOCKWASHER - HEAVY
20	253075	1	CABLE ANCHOR SPACER
21	823201	1	ANTI BUCK CYLINDER

Control Components - LH Handles

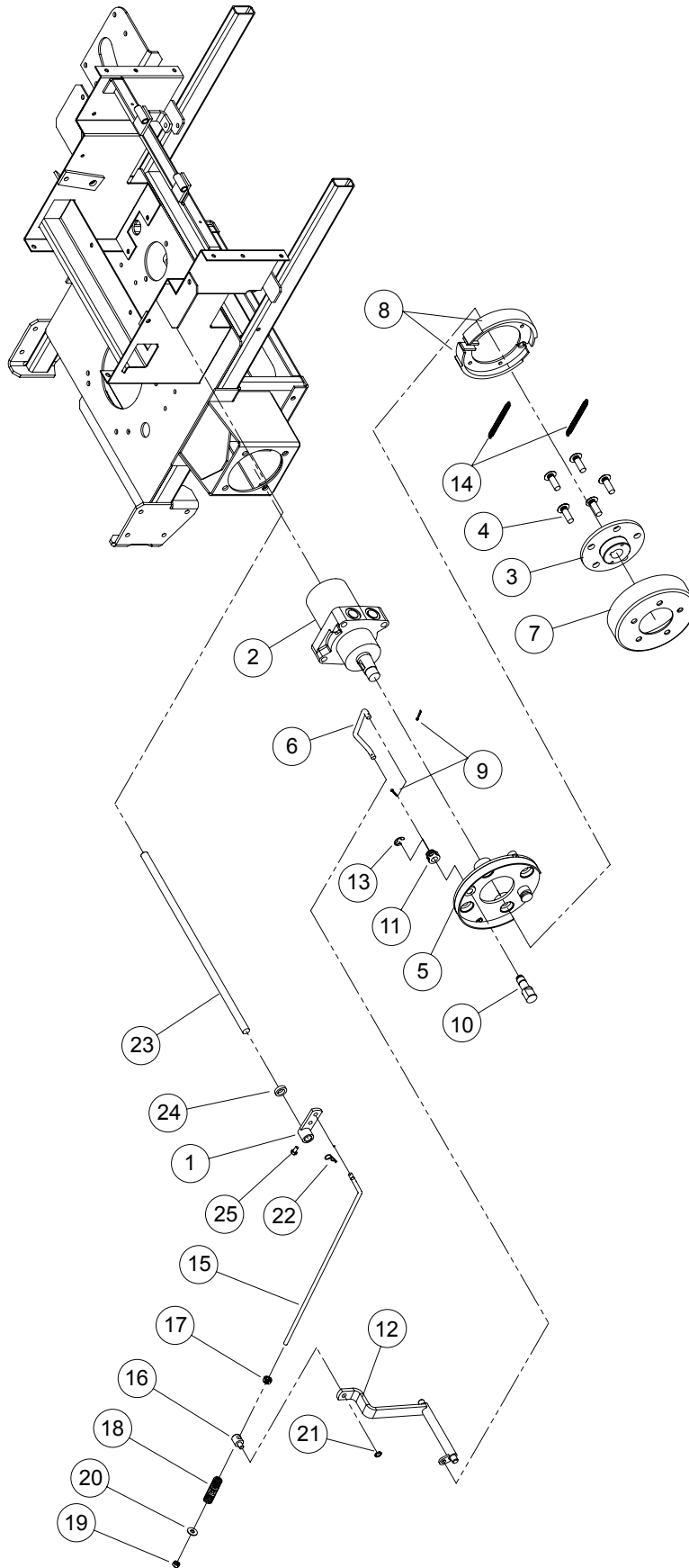




Control Components - LH Handles

#	PART NO.	QTY.	DESCRIPTION
1	593026	1	RH CONTROL COVER
2	593028	1	LH CONTROL COVER
3	593024	1	LH CONTROL MOUNT
4	109015	11	1/4-20 NUT CLIP
5	105004	11	1/4 STD. LOCKWASHER
6	100252	11	1/4-20 X 3/4 HHCS
7	423140	2	3/4" 2 BOLT BEARING
8	592026	1	CONTROL PIVOT LEFT
9	592060	1	HANDLE BAR W / STOP WELDMNT
10	100294	1	3/8-16 - 1-1/2 HHCS
11	104257	1	3/8-16 NYLOCK
12	823221	2	10 MM BALL STUD
13	104256	2	5/16-18 NYLOC NUT
14	592042	1	HANDLE LH W / GRIP
15	523032	1	HANDLE GRIP
16	523033	1	HANDLE PLUG
17	593048	1	SWITCH MOUNT - NEUTRAL
18	107519	2	5/16-18 X 1/2 CARR BOLT
19	109001	4	5/16-18 WHIZLOCK NUT
20	100274	2	5/16-18 X 1-1/4 HHCS
21	593041	1	NEUTRAL SWITCH
22	105005	1	5/16 LOCKWASHER - HEAVY
23	253075	1	CABLE ANCHOR SPACER
24	823201	1	ANTI BUCK CYLINDER

Brake Components - Right Hand

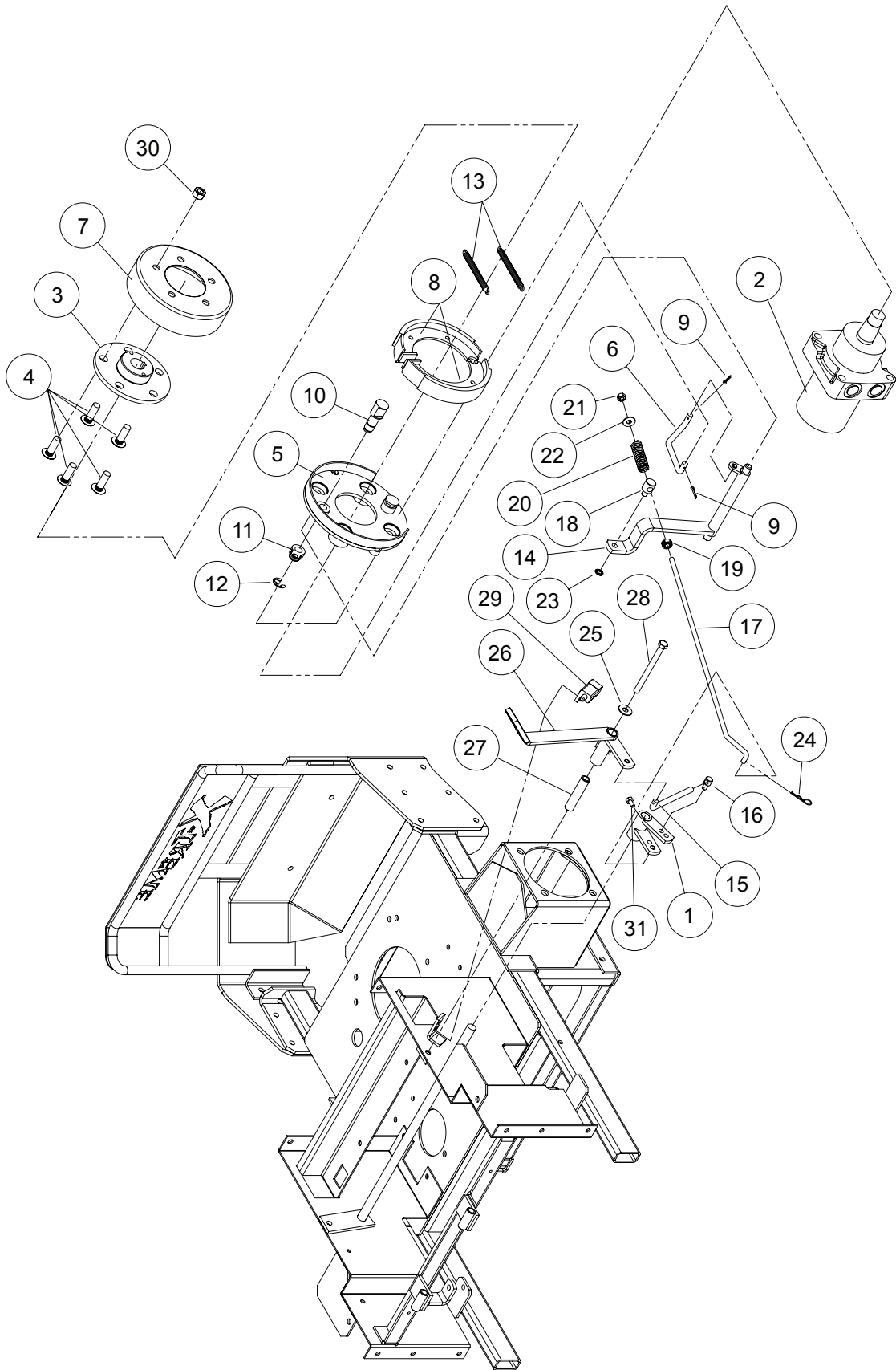




Brake Components - Right Hand

#	PART NO.	QTY.	DESCRIPTION
1	422049	1	BRAKE CRANK WLDMNT - PLATED
2	583325	1	WHEEL MOTOR
3	592094	1	WHEEL HUB – SHOE BRAKE
4	103031	5	1/2-20 X 1 3/8 UNF PRESS IN STUD
5	592062	1	BACKPLATE - DRUM
6	533032	1	SHOE BRAKE LINK
7	423310	1	BRAKE DRUM – 180
8	423276	2	BRAKE SHOE
9	106753	2	3/32 X 3/4 COTTER PIN
10	423296	1	BRAKE CAM
11	423308	1	BRAKE CAM ARM
12	532026	1	BRAKE CONTROL - RH
13	108500	1	E-RING FOR 5/8 DIA.
14	423281	2	BRAKE SPRING
15	423128	1	PARK BRAKE LINK
16	423130	1	PARK BRAKE SWIVEL
17	523112	1	5/16 CLAMP COLLAR
18	523024	1	SPRING
19	104256	1	5/16 NYLOCK NUT
20	105258	1	5/16 FLAT WASHER
21	363177	1	3/8 PUSH NUT
22	363165	1	#3 HAIRPIN COTTOR
23	423368	1	BRAKE CROSS SHAFT
24	363170	1	BLADE SPACER
25	100501	1	1/4-28 X 1/2 HHCS

Brake Components - Left Hand



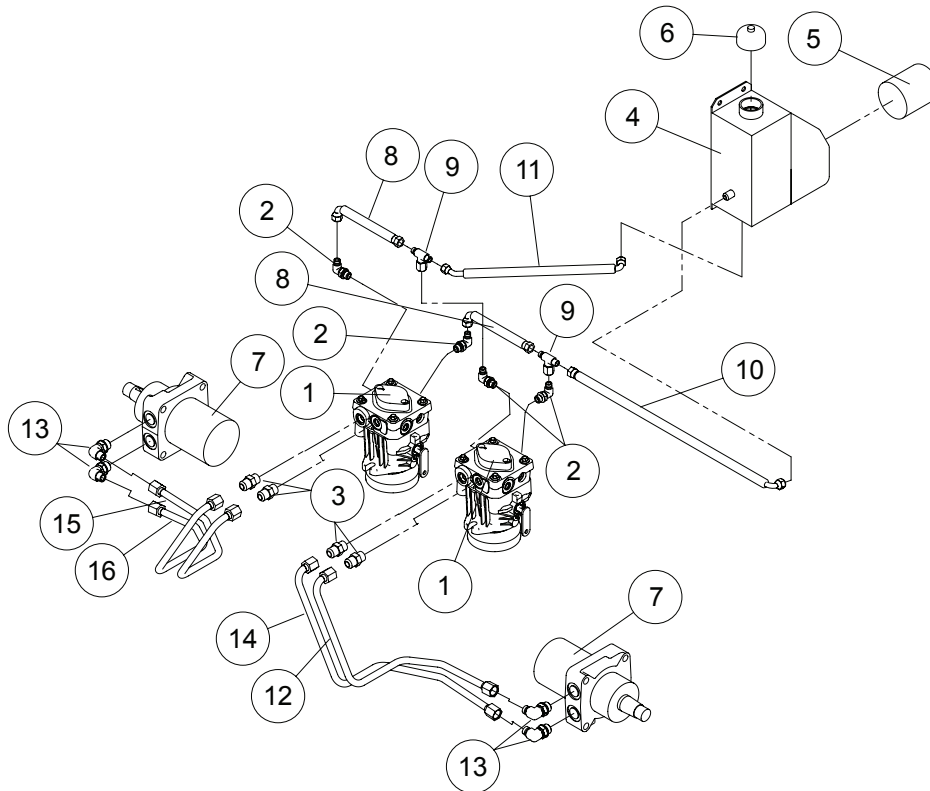


Brake Components - Left Hand

#	PART NO.	QTY.	DESCRIPTION
1	422146	1	PARK BRAKE CRANK
2	583325	1	WHEEL MOTOR
3	592094	1	WHEEL HUB – SHOE BRAKE
4	103031	5	1/2-20 X 1 3/8 UNF PRESS IN STUD
5	592062	1	BACKPLATE - DRUM
6	533032	1	SHOE BRAKE LINK
7	423310	1	BRAKE DRUM – 180
8	423276	2	BRAKE SHOE
9	106753	2	3/32 X 3/4 COTTER PIN
10	423296	1	BRAKE CAM
11	423308	1	BRAKE CAM ARM
12	108500	1	E-RING FOR 5/8 DIA.
13	423281	2	BRAKE SPRING
14	532028	1	BRAKE CONTROL - LH
15	423350	1	BRAKE LINK
16	363029	1	.312 ROD SWIVEL
17	423128	1	PARK BRAKE LINK
18	423130	1	PARK BRAKE SWIVEL
19	523112	1	5/16 CLAMP COLLAR
20	523024	1	SPRING
21	104256	1	5/16 NYLOCK NUT
22	105258	1	5/16 FLAT WASHER
23	363177	1	3/8 PUSH NUT
24	363165	1	#3 HAIRPIN COTTOR
25	105260	1	3/8 STANDARD FLAT WASHER
26	422086	1	Z- PARK LEVER W/GRIP
27	363105	1	IDLER BUSHING
28	100305	1	3/8-16 X 4-1/2 HHCS
29	523034	1	PARK BRAKE SWITCH
30	103023	1	1/2-20 LUG NUT
31	100501	1	1/4-28 X 1/2 HHCS

Hydro Components

#	PART NO.	QTY.	DESCRIPTION
1	533153	2	PUMP - HG W/RTN SV
2	453074	4	90° ADAPTER
3	583126	4	STRAIGHT ADAPTER
4	423307	1	OIL TANK
5	423361	1	OIL FILTER
6	583406	1	OIL TANK CAP
7	583325	2	WHEEL MOTOR
8	453127	2	PUMP TO PUMP FEED LINE
9	453106	2	SWIVEL TEE
10	593073	1	HOSE RETURN
11	423373	1	PUMP FEED LINE - Z
12	533113	1	RUBBER LINE L. OUTSIDE
13	523058	4	RETURN ADAPTER
14	533113	1	RUBBER LINE L. INSIDE
15	533113	1	RUBBER LINE R. INSIDE
16	533113	1	RUBBER LINE R. OUTSIDE

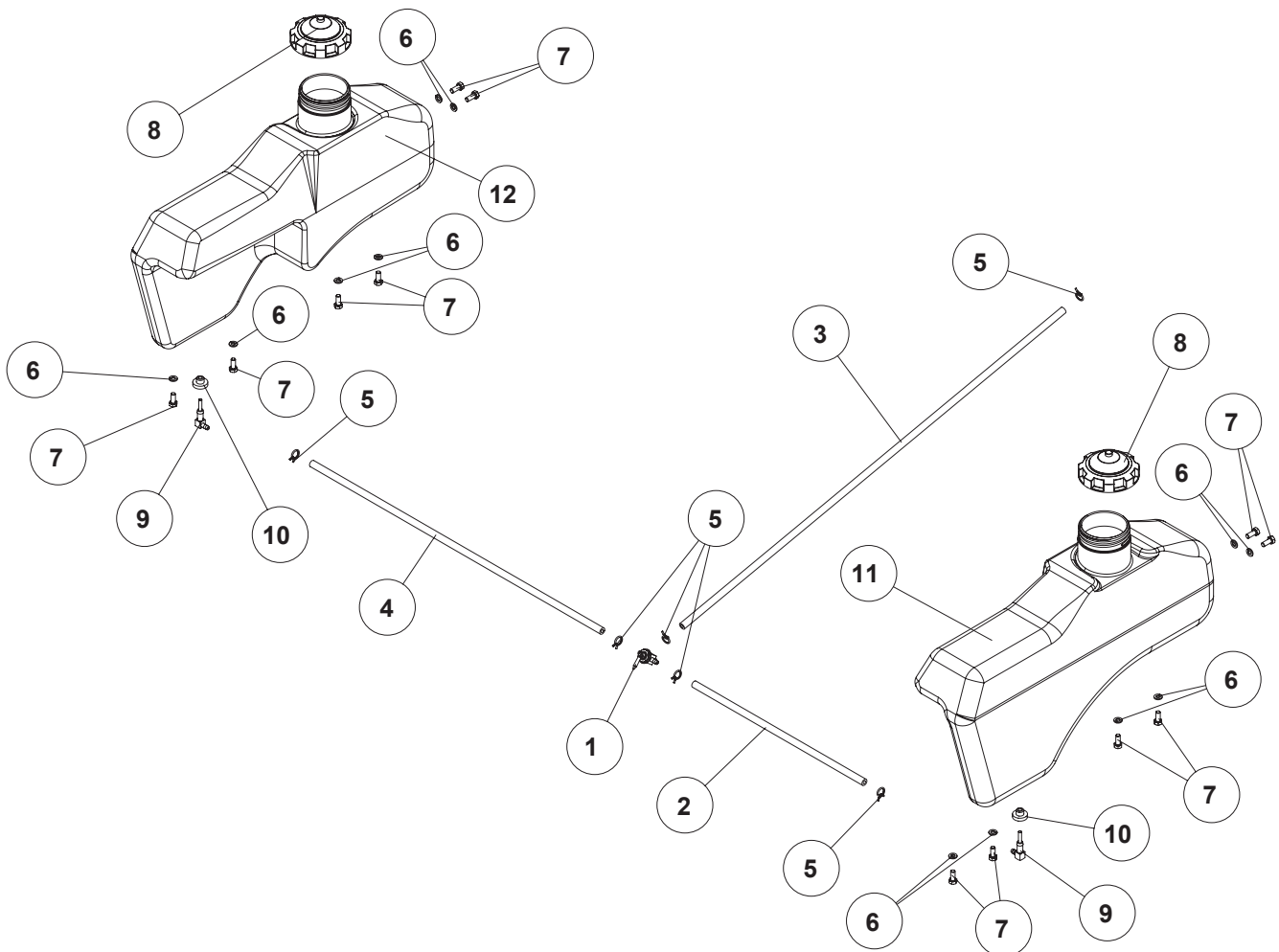


Fuel Components

#	PART NO.	QTY.	DESCRIPTION
1	583050	1	FUEL VALVE
2	533085	1	FUEL LINE - 21 1/2"
3	583185	1	FUEL LINE - 39"
4	583186	1	FUEL LINE - 29"
5	363098	6	FUEL LINE CLAMP
6	105005	12	5/16 LOCK WASHER
7	100271	12	5/16-18 X 3/4 HHCS
8	823179	2	FUEL CAP - LARGE
9	583183	2	FUEL TANK ADAPTER
10	393042	2	VALVE GROMMET
11	533019	1	FUEL TANK / FENDER LH
12	533018	1	RH FUEL TANK

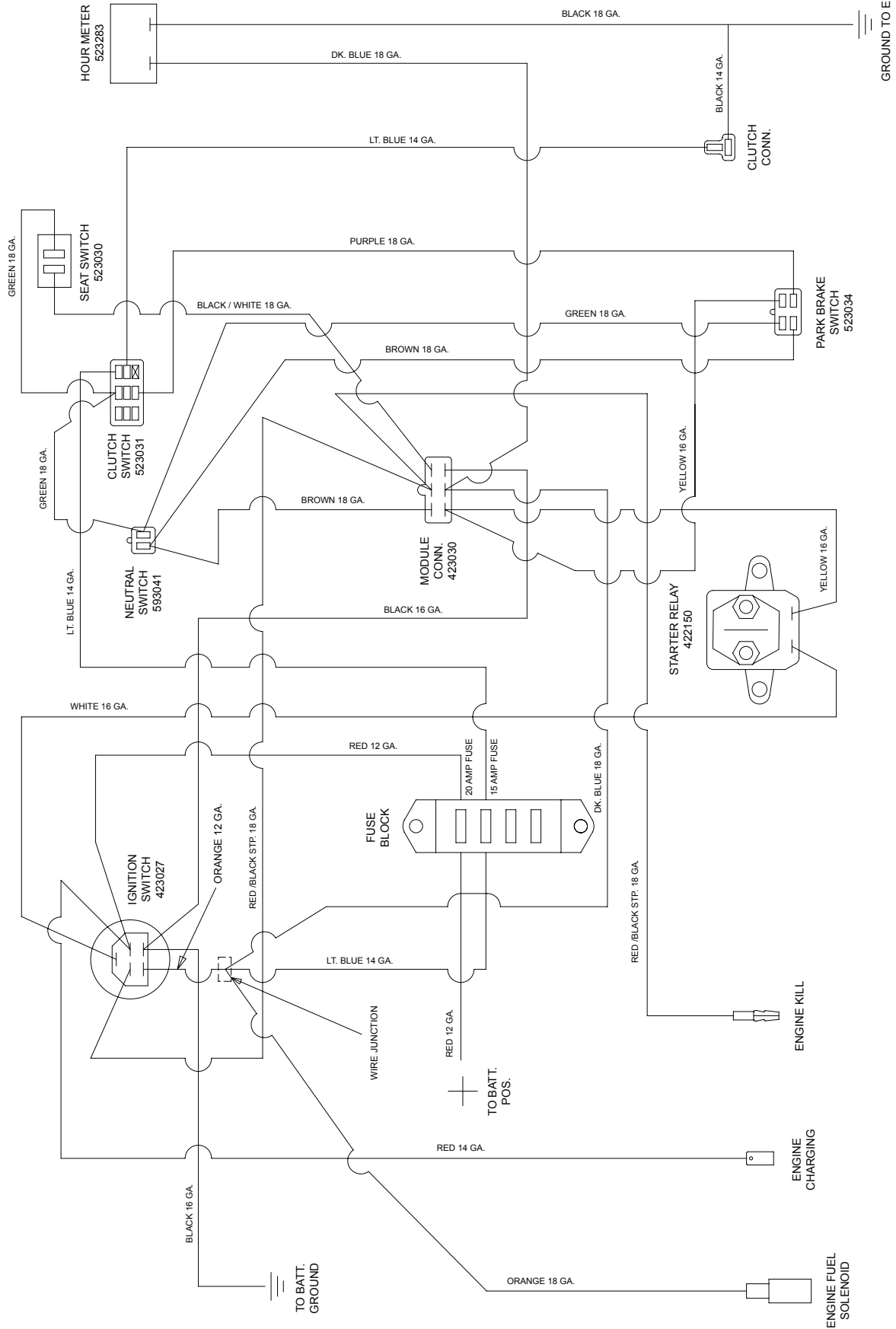
NOTE:

- A:** THERE ARE NO REPLACEMENT DECALS FOR TANKS. DUE TO THEIR MOLDED INTO THE TANK.



ENCORE PART # 423351
 WIRE HARNESS FOR 42K17Z ; 17 HP KAWASAKI
 WIRE HARNESS FOR 48K19Z ; 19 HP KAWASAKI
 WIRE HARNESS FOR 48K19X ; 19 HP KAWASAKI
 WIRE HARNESS FOR 52K21Z ; 21 HP KAWASAKI
 WIRE HARNESS FOR 52K23X ; 23 HP KAWASAKI

WIRE HARNESS FOR 60K25Z ; 25 HP KAWASAKI
 WIRE HARNESS FOR 60K25X ; 25 HP KAWASAKI



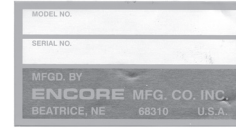
X-TREME⁵² Decal List



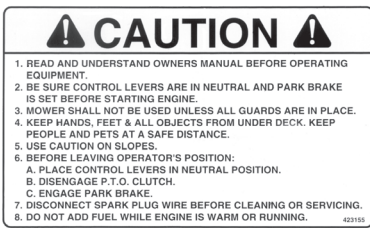
1



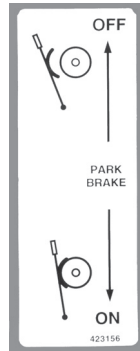
2



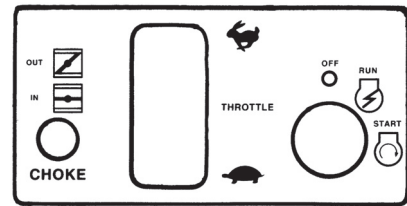
3



4



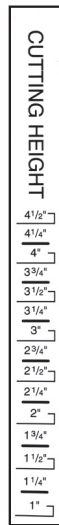
5



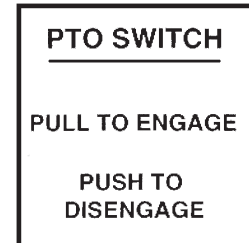
6



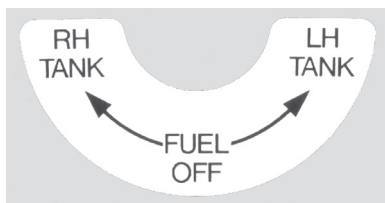
7



8



9



10



11



12

X-TREME⁵²

Decal List

#	PART NO.	QTY.	DESCRIPTION
1	363001	1	CAUTION DECAL
2	363023	2	DANGER DECAL
3	363026	1	SERIAL NO. PLATE
4	423155	1	RIDER CAUTION DECAL
5	423156	1	PARK LEVER DECAL
6	423197	1	CONTROL DECAL
7	423354	1	OIL DECAL - SYN.
8	423379	1	CUT GAGE DECAL
9	523021	1	PTO DECAL
10	583023	1	LABEL - FUEL VALVE
11	823320	1	BATTERY WARNING DECAL
12	533057	1	FRONT X52 LABEL
13	423196	1	BELT ROUTING DECAL

Notes

Notes

