



ENCORE

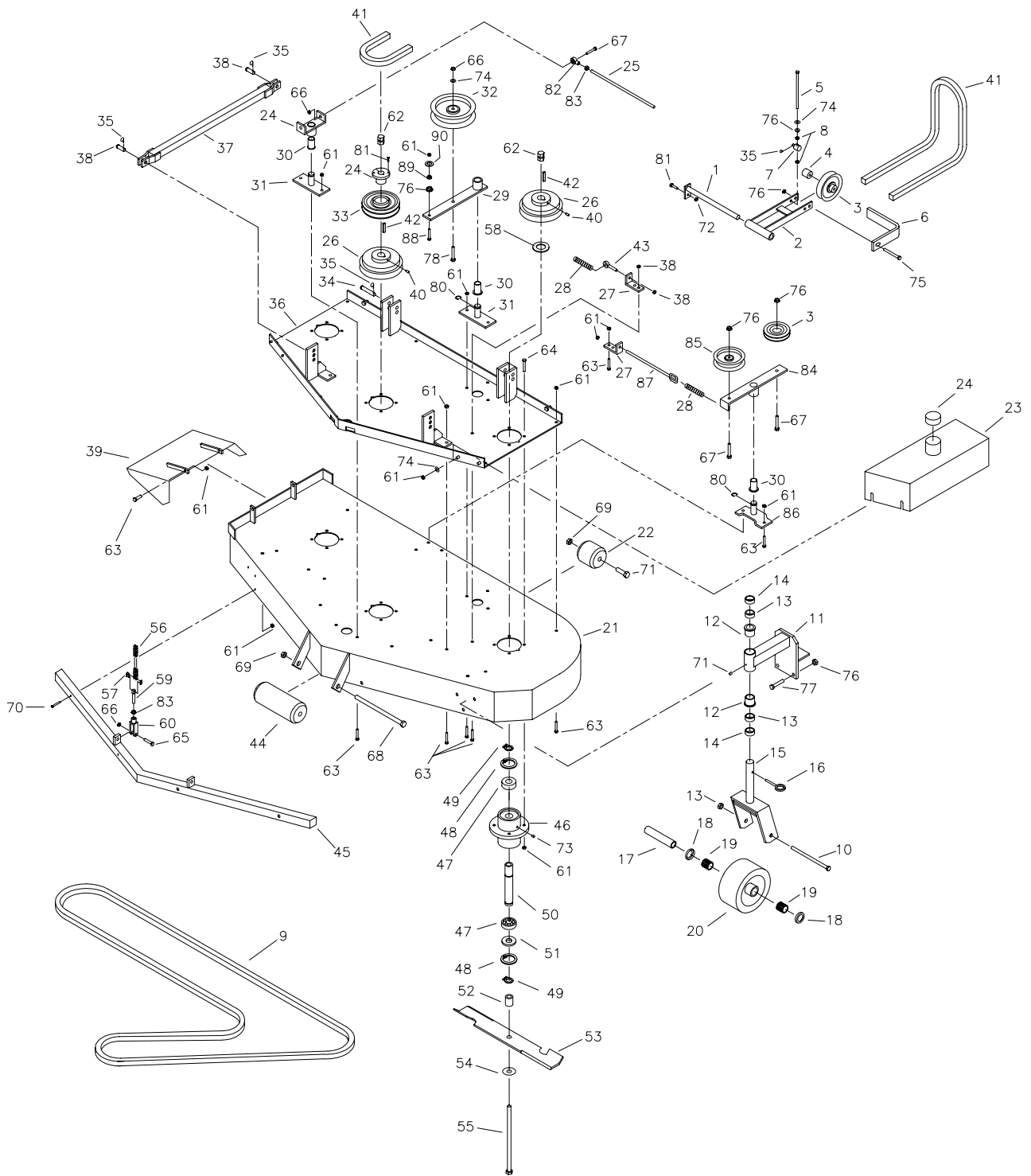
MANUFACTURING CO. INC.

PRO-Line RIDER

61K555G

**PARTS
MANUAL**

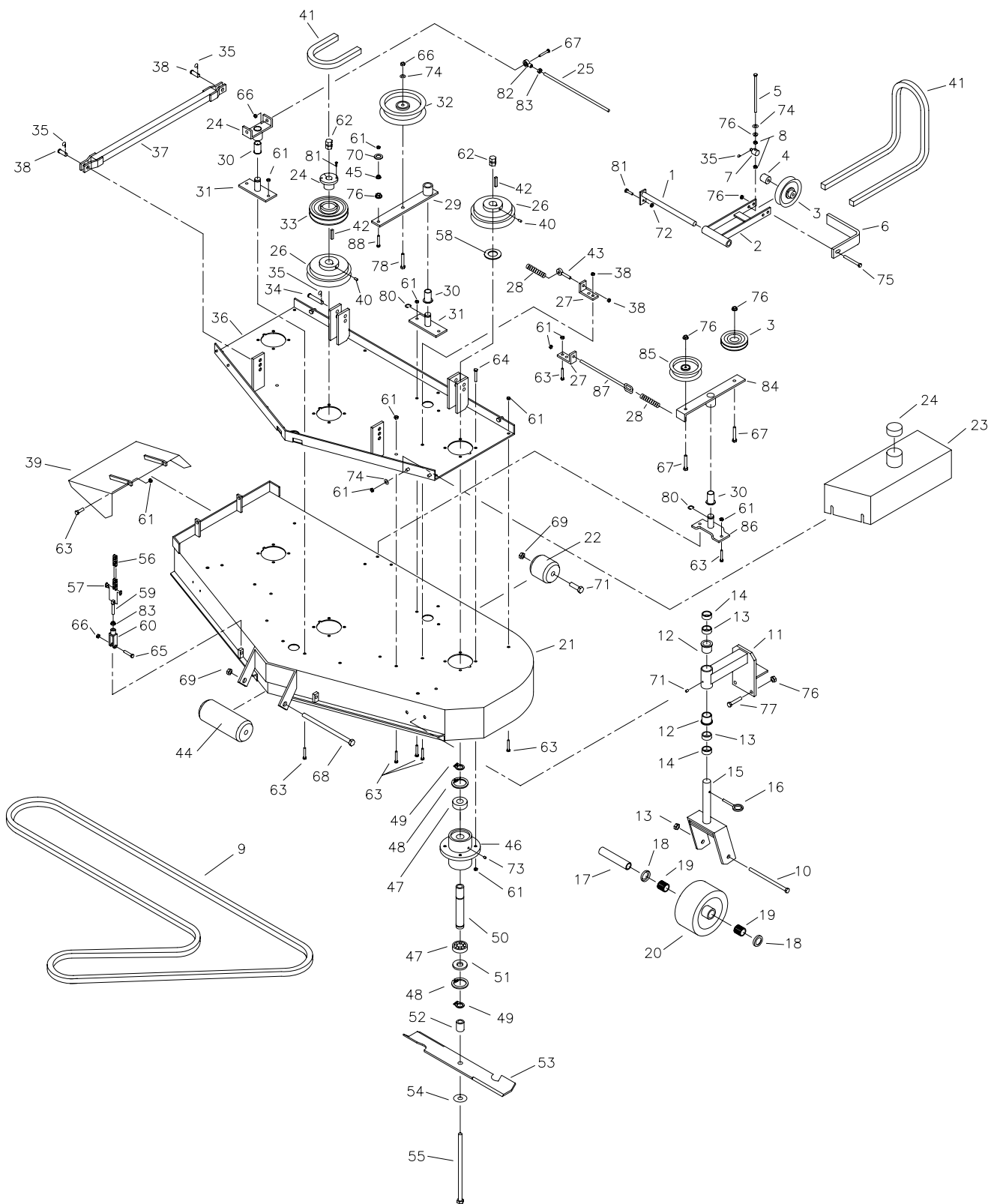




52" DECK ASSEMBLY

| # | P/N | QTY | DESCRIPTION | # | P/N | QTY | DESCRIPTION |
|----|---------|-----|-----------------------------|----|--------|-----|---------------------------|
| 1 | 522080 | 1 | PIVOT ROD - MULE DRIVE | 47 | 363350 | 6 | BEARING - BLADE SPINDLE |
| 2 | 522078 | 2 | MULE DRIVE | 48 | 108506 | 6 | RETAINING RING - LARGE |
| 3 | 523325 | 2 | DECK DRIVE IDLER PULLEY | 49 | 108507 | 6 | RETAINING RING - 1" |
| 4 | 523277 | 2 | IDLER SPACER | 50 | 363058 | 3 | BLADE SPINDLE |
| 5 | 523276 | 2 | ADJUSTING BOLT | 51 | 363060 | 3 | DUST CAP |
| 6 | 523320 | 2 | BELT GUIDE | 52 | 373086 | 3 | BLADE SPACER |
| 7 | 523128 | 2 | TENSIONER SWIVEL | 53 | 363291 | 3 | 18" BLADE |
| 8 | 104753 | 4 | 3/8" - 16 JAM NUT | 54 | 105268 | 3 | 5/8" FLAT WASHER |
| 9 | 523108 | 1 | BLADE BELT | 55 | 100353 | 3 | 5/8" X 9 1/2" HHCS (GR 5) |
| 10 | 100339 | 1 | 1/2" - 13 X HHCS | 56 | 523121 | 2 | CHAIN |
| 11 | 322007 | 1 | CASTER SUPPORT W/BUSHING | 57 | 523123 | 2 | CONNECTOR LINK |
| 12 | 363007 | 2 | FLANGE BEARING | 58 | 363121 | 3 | 1" WHEEL WASHER |
| 13 | 104259 | 1 | 1/2" - 13 NYLOC NUT | 59 | 523125 | 2 | ANCHOR STUD |
| 14 | 363006 | 4 | SPACER | 60 | 363192 | 2 | LARGE YOKE |
| 15 | 522022 | 1 | DECK STRUT | 61 | 104256 | 32 | 5/16" - 18 NYLOC NUT |
| 16 | 109020 | 1 | QUICK PIN | 62 | 104510 | 3 | BLADE NUT |
| 17 | 363307 | 1 | AXLE TUBE | 63 | 100273 | 21 | 5/16" - 18 X 1" HHCS |
| 18 | 363011 | 2 | END CAP | 64 | 100274 | 16 | 5/16" - 18 X 1 1/4" HHCS |
| 19 | 362012 | 2 | ROLLER BEARING | 65 | 100294 | 2 | 3/8" - 16 X 1 1/2" HHCS |
| 20 | 523432 | 1 | DECK CASTER WHEEL | 66 | 104257 | 1 | 3/8" NYLOC NUT |
| 21 | 522004 | 1 | 52" DECK | 67 | 100295 | 6 | 3/8" - 16 X 1 3/4" HHCS |
| 22 | 523084 | 2 | REAR DECK ROLLER | 68 | 100352 | 1 | 5/8" X 9" HHCS |
| 23 | 522012 | 1 | RH BELT SHIELD | 69 | 104261 | 1 | 5/8" NYLOC NUT |
| | 522014 | 1 | LH BELT SHIELD | 70 | 100276 | 4 | 5/16" - 18 X 1 3/4" HHCS |
| 24 | 363217 | 1 | TAPER LOCK HUB - 25 MM | 71 | 100346 | 2 | 5/8" - 11 X 4 1/2" HHCS |
| 25 | 523103 | 1 | LINK WATTS | 72 | 104255 | 1 | 1/4" - 20 NYLOC NUT |
| 26 | 523095 | 3 | OFF-SET PULLEY | 73 | 111002 | 3 | 5/16" DRIVE ZERK |
| 27 | 523094 | 2 | SPRING MOUNT DECK | 74 | 105260 | 10 | 3/8" FLAT WASHER |
| 28 | 523327 | 2 | IDLER SPRING | 75 | 100302 | 2 | 3/8" - 16 X 3 1/2" HHCS |
| 29 | 522016 | 1 | IDLER ARM | 76 | 109007 | 11 | 3/8" - 16 WHIZLOCK |
| 30 | 523111 | 3 | 3/4" FLANGE BUSHING | 77 | 100292 | 6 | 3/8" - 16 X 1 HHCS |
| 31 | 522104 | 2 | OFF-SET PIVOT MOUNT | 78 | 100296 | 1 | 3/8" - 16 X 2 HHCS |
| 32 | 363264 | 1 | ENGAGEMENT IDLER | 79 | 111001 | 1 | GREASE ZERK |
| 33 | 523096 | 1 | 5" TAPER LOCK SHEAVE | 80 | 108509 | 2 | E-RING |
| 34 | 523242 | 2 | 7/16" CLEVIS PIN - LONG | 81 | 100252 | 1 | 1/4" - 20 X 3/4" HHCS |
| 35 | 523244 | 4 | # 3 HAIR PIN COTTER | 82 | 523104 | 4 | ROD END - WATTS |
| 36 | 522008 | 1 | 52" SUB-PLATE | 83 | 109008 | 4 | 3/8" - 24 WHIZLOCK |
| 37 | 522040 | 2 | DECK ARM WELDMENT | 84 | 522101 | 1 | IDLER ARM |
| 38 | 523243 | 4 | 7/16" CLEVIS PIN - SHORT | 85 | 523329 | 1 | FLAT IDLER |
| 39 | 482017 | 1 | GRASS DEFLECTOR | 86 | 522104 | 1 | IDLER PIVOT |
| 40 | 103293 | 3 | 5/16" - 18 X 3/8" SET SCREW | 87 | 453080 | 1 | ROD STOP |
| 41 | 523107X | 1 | DECK DRIVE BELT | 88 | 100275 | 1 | 5/16" - 16 X 1 1/2" HHCS |
| 42 | 363242 | 3 | BLADE SPINDLE KEY | 89 | 109001 | 1 | 5/16" - 16 WHIZLOCK |
| 43 | 363080 | 1 | RIGHT HAND EYE BOLT | 90 | 105258 | 1 | 5/16" FLAT WASHER |
| 44 | 603023 | 1 | ANTI-SCALP ROLLER | 91 | 523324 | | 4" DECK IDLER |
| 45 | 522099 | 1 | BUMPER | | | | |
| 46 | 363053 | 3 | BLADE SPINDLE HOUSING | | | | |

Notes:



61" DECK ASSEMBLY

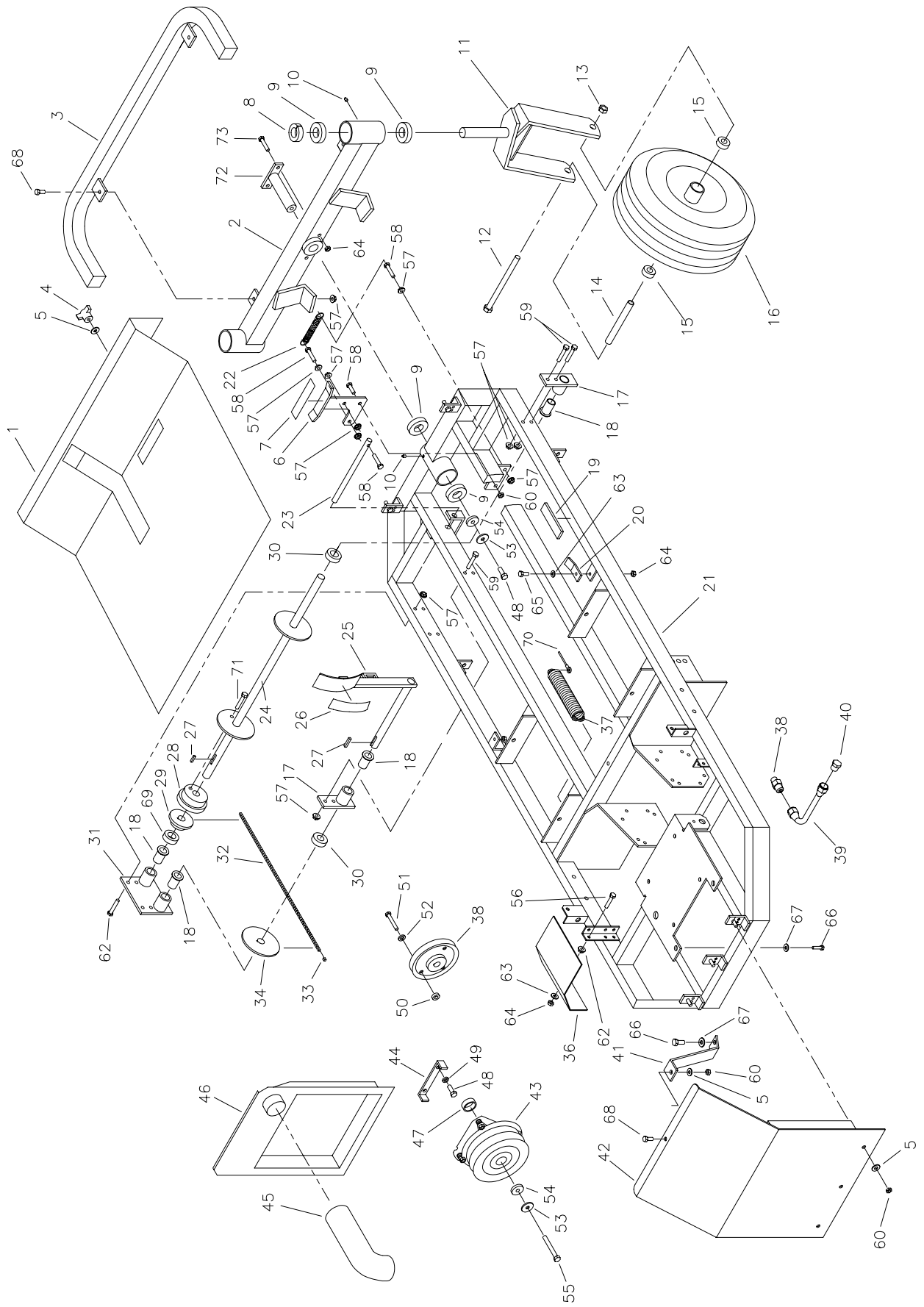
| # | P/N | QTY | DESCRIPTION | # | P/N | QTY | DESCRIPTION |
|----|---------|-----|-----------------------------|----|--------|-----|------------------------------|
| 1 | 522080 | 1 | PIVOT ROD - MULE DRIVE | 46 | 363053 | 3 | BLADE SPINDLE HOUSING |
| 2 | 522078 | 2 | MULE DRIVE | 47 | 363350 | 6 | BEARING - BLADE SPINDLE |
| 3 | 523325 | 2 | DECK DRIVE IDLER PULLEY | 48 | 108506 | 6 | RETAINING RING - LARGE |
| 4 | 523277 | 2 | IDLER SPACER | 49 | 108507 | 6 | RETAINING RING - 1" |
| 5 | 523276 | 2 | ADJUSTING BOLT | 50 | 363058 | 3 | BLADE SPINDLE |
| 6 | 523320 | 2 | BELT GUIDE | 51 | 363060 | 3 | DUST CAP |
| 7 | 523128 | 2 | TENSIONER SWIVEL | 52 | 373086 | 3 | BLADE SPACER |
| 8 | 104753 | 4 | 3/8" - 16 JAM NUT | 53 | 603041 | 3 | 20" BLADE |
| 9 | 603050 | 1 | BLADE BELT | 54 | 105268 | 3 | 5/8" FLAT WASHER |
| 10 | 100339 | 1 | 1/2" - 13 X 6" HHCS | 55 | 100353 | 3 | 5/8" X 9 1/2" HHCS (GR 5) |
| 11 | 322007 | 1 | CASTER SUPPORT W/BUSHING | 56 | 523121 | 2 | CHAIN |
| 12 | 363007 | 2 | FLANGE BEARING | 57 | 523123 | 2 | CONNECTOR LINK |
| 13 | 104259 | 1 | 1/2" - 13 NYLOC NUT | 58 | 363121 | 3 | 1" WHEEL WASHER |
| 14 | 363006 | 4 | SPACER | 59 | 523125 | 2 | ANCHOR STUD |
| 15 | 522022 | 1 | DECK STRUT | 60 | 363192 | 2 | LARGE YOKE |
| 16 | 109020 | 1 | QUICK PIN | 61 | 104256 | 32 | 5/16" - 18 NYLOC NUT |
| 17 | 363307 | 1 | AXLE TUBE | 62 | 104510 | 3 | BLADE NUT |
| 18 | 363011 | 2 | END CAP | 63 | 100273 | 21 | 5/16" - 18 X 1 HHCS |
| 19 | 362012 | 2 | ROLLER BEARING | 64 | 100274 | 16 | 5/16" - 18 X 1 1/4" HHCS |
| 20 | 523432 | 1 | DECK CASTER WHEEL | 65 | 100294 | 2 | 3/8" - 16 X 1 1/2" HHCS |
| 21 | 602014 | 1 | 61" DECK | 66 | 104257 | 1 | 3/8" NYLOC NUT |
| 22 | 523084 | 2 | REAR DECK ROLLER | 67 | 100295 | 6 | 3/8" - 16 X 1 3/4" HHCS |
| 23 | 602021 | 1 | RH BELT SHIELD | 68 | 100352 | 1 | 5/8" X 9" HHCS |
| | 602019 | 1 | LH BELT SHIELD | 69 | 104261 | 1 | 5/8" NYLOC NUT |
| 24 | 363217 | 1 | TAPER LOCK HUB - 25 MM | 70 | 105258 | 1 | 5/16" FLAT WASHER |
| 25 | 523103 | 2 | LINK WATTS | 71 | 100346 | 2 | 5/8" - 11 X 4 1/2" HHCS |
| 26 | 523095 | 3 | OFF-SET PULLEY | 72 | 104255 | 1 | 1/4" - 20 NYLOC NUT |
| 27 | 523094 | 2 | SPRING MOUNT DECK | 73 | 111002 | 3 | 5/16" DRIVE ZERK |
| 28 | 523327 | 2 | IDLER SPRING | 74 | 105260 | 10 | 3/8" FLAT WASHER |
| 29 | 522016 | 1 | IDLER ARM | 75 | 100302 | 2 | 3/8" - 16 X 3 1/2" HHCS |
| 30 | 523111 | 3 | 3/4" FLANGE BUSHING | 76 | 109007 | 11 | 3/8" - 16 WHIZLOCK |
| 31 | 362024 | 2 | IDLER PIVOT ASSEMBLY | 77 | 100292 | 6 | 3/8" - 16 X 1" HHCS |
| 32 | 363264 | 1 | ENGAGEMENT IDLER | 78 | 100296 | 1 | 3/8" - 16 X 2" HHCS |
| 33 | 363216 | 1 | 5 3/4" TAPER LOCK SHEAVE | 79 | 111001 | 1 | GREASE ZERK |
| 34 | 523242 | 2 | 7/16" CLEVIS PIN | 80 | 108509 | 2 | E-RING |
| 35 | 523244 | 4 | # 3 HAIR PIN COTTER | 81 | 100252 | 1 | 1/4" - 20 X 3/4" HHCS |
| 36 | 602016 | 1 | 61" SUB-PLATE | 82 | 523104 | 4 | ROD END - WATTS |
| 37 | 522040 | 2 | DECK ARM WELDMENT | 83 | 109008 | 4 | 3/8" - 24 WHIZLOCK |
| 38 | 523243 | 4 | SHORT CLEVIS PIN | 84 | 522101 | 1 | IDLER ARM FLOATING W/BUSHING |
| 39 | 482017 | 1 | GRASS DEFLECTOR | 85 | 523329 | 1 | FLAT IDLER |
| 40 | 103293 | 3 | 5/16" - 18 X 3/8" SET SCREW | 86 | 522104 | 1 | IDLER PIVOT |
| 41 | 523349X | 1 | DECK DRIVE BELT | 87 | 453080 | 1 | ROD STOP |
| 42 | 363242 | 3 | BLADE SPINDLE KEY | 88 | 100275 | 1 | 5/16" - 16 X 1 1/2" HHCS |
| 43 | 363080 | 1 | RIGHT HAND EYE BOLT | 89 | 523324 | 1 | 4" DECK IDLER |
| 44 | 603023 | 1 | ANTI-SCALP ROLLER | 90 | 522020 | | CENTER ARM - WATTS |
| 45 | 109001 | 1 | 5/16" - 16 WHIZLOCK | | | | |

Notes:

SEAT FRAME ASSEMBLY

| # | P/N | QTY | DESCRIPTION | # | P/N | QTY | DESCRIPTION |
|----|--------|-----|-----------------------------|----|--------|-----|--------------------------------|
| 1 | 523029 | 1 | RIDER SEAT | 46 | 523014 | 1 | HOURLY METER MOUNT |
| 2 | 523149 | 1 | ARM REST KIT | 47 | 363098 | 4 | GAS LINE CLAMP |
| 3 | 523030 | 1 | SEAT SWITCH | 48 | 523028 | 4 | ASSIST SPRING |
| 4 | 523212 | 1 | SEAT FRAME PANEL | 49 | 253054 | 1 | POLY SPACER |
| 5 | 522092 | 1 | SEAT PANEL | 50 | 522082 | 1 | PARK SIDE ROD WELDMENT |
| 6 | 523105 | 1 | SEAT HINGE | 51 | 102000 | 20 | #12 - 24 X 5" THREAD CUT SCREW |
| 7 | 523031 | 1 | PTO SWITCH | 52 | 523151 | 1 | PARK ROD - SHORT |
| 8 | 523299 | 1 | PARK LEVER BRACKET | 53 | 363165 | 4 | HAIR PIN COTTER |
| 9 | 522034 | 1 | RIGHT FENDER | 54 | 363029 | 1 | 5/16" ROD SWIVEL |
| 10 | 523044 | 1 | SEAT CABLE | 55 | 109001 | 7 | 5/16" WHIZLOCK NUT |
| 11 | 523114 | 2 | ASSIST ROD | 56 | 523153 | 1 | PARK ROD - LONG |
| 12 | 523028 | 4 | ASSIST SPRING | 57 | 522046 | 1 | SEAT FRAME WELDMENT |
| 13 | 523017 | 2 | HANDLE | 58 | 523159 | 1 | PARK LEVER GRIP |
| 14 | 523032 | 2 | HANDLE GRIP | 59 | 523283 | 1 | HOURLY METER |
| 15 | 523033 | 2 | HANDLE PLUG | 60 | 523310 | 2 | TANK TO PUMP HOSE |
| 16 | 363257 | 2 | CAP/PLASTIC TANK | 61 | | | |
| 17 | 523019 | 2 | EDGE TRIM | 62 | 523309 | 1 | TANK OUTLET ADAPTER |
| 18 | 522036 | 1 | LEFT FENDER | 63 | 453043 | 1 | SUCTION SCREEN |
| 19 | 523222 | 2 | CONTROL LEVER ANGLE | 64 | 103019 | 1 | .50 NPT PLUG |
| 20 | 522095 | 1 | LH HANDLE PIVOT ROD | 65 | 523050 | 1 | BATTERY |
| | 522060 | 1 | RH HANDLE PIVOT ROD | 66 | 523054 | 1 | BATTERY BOLT |
| 21 | 522061 | 2 | BI-DIRECTIONAL BLOCK W/ZERK | 67 | 523053 | 1 | BATTERY HOLD DOWN |
| 22 | 523220 | 1 | LH TANK MOUNT | 68 | 100294 | 6 | 3/8" - 16 X 1 1/2" HHCS |
| | 523218 | 1 | RH TANK MOUNT | 69 | 104257 | 8 | 3/8" - 16 NYLOC NUT |
| 23 | 363302 | 2 | FUEL TANK W/INSERTS | 70 | 523112 | 4 | 5/16" CLAMP COLLAR |
| 24 | 523069 | 1 | RETURN LINE ASSEMBLY | 71 | 363159 | 4 | BUSHING |
| 25 | 523073 | 1 | TANK RETURN ADAPTER | 72 | 523036 | 3 | WARNING LIGHT |
| 26 | 523039 | 2 | FUEL ADAPTER | 73 | 101039 | 8 | #10 - 24 X 5/8" MACHINE SCREW |
| 27 | 363269 | 2 | FUEL VALVE CLAMP | 74 | 104252 | 8 | #10 - 24 NYLOC NUT |
| 28 | 523185 | 8 | 5/16" FUEL CLAMP | 75 | 363024 | 4 | COMPRESSION SPRING |
| 29 | 523040 | 1 | FUEL SHUT-OFF | 76 | 105006 | 4 | 3/8" LOCK WASHER |
| 30 | 363272 | 2 | 10" KOHLER FUEL LINE | 77 | 100303 | 2 | 3/8" - 16 X 4" HHCS |
| 31 | 523048 | 1 | VALVE FUEL LINE | 78 | 100254 | 2 | 1/4" - 20 X 1" HHCS |
| 32 | 523046 | 1 | LH FUEL LINE | 79 | 109000 | 4 | 1/4" - 20 WHIZLOCK NUT |
| 33 | 363032 | 1 | FUEL FILTER | 80 | 100271 | 4 | 5/16" - 18 X 3/4" HHCS |
| 34 | 523041 | 1 | 5/16" TEE (FUEL) | 81 | 100274 | 2 | 5/16" - 18 X 1 1/4" HHCS |
| 35 | 523045 | 1 | RH FUEL LINE | 82 | 111001 | 1 | 1/8" NPT STRAIGHT ZERK |
| 36 | 453046 | 1 | OIL TANK | 83 | 105256 | 8 | 1/4" STANDARD FLAT WASHER |
| 37 | 523047 | 1 | CENTER FUEL LINE | 84 | 100254 | 8 | 1/4" - 20 X 1" HHCS |
| 38 | 453042 | 1 | OIL TANK CAP | 85 | 105004 | 8 | 1/4" LOCK WASHER |
| 39 | 523034 | 1 | PARK SWITCH | 86 | 105258 | 3 | 5/16" STANDARD FLAT WASHER |
| 40 | 522066 | 1 | PARK ROD HUB | 87 | 104259 | 2 | 1/2" - 13 NYLOC NUT |
| 41 | 363208 | 1 | OPC SWITCH | 88 | 105008 | 2 | 1/2" LOCKWASHER |
| 42 | 363087 | 1 | TRANSMISSION SHAFT SPACER | 89 | 100275 | 3 | 5/16" - 18 X 1 1/2" HHCS |
| 43 | 523278 | 3 | SEAT SPRING | 90 | 523051 | 1 | POSITIVE CABLE - BATTERY |
| 44 | | | | 91 | 523052 | 1 | NEGATIVE CABLE - BATTERY |
| 45 | 104256 | 3 | 5/16" NYLOC NUT | | | | |

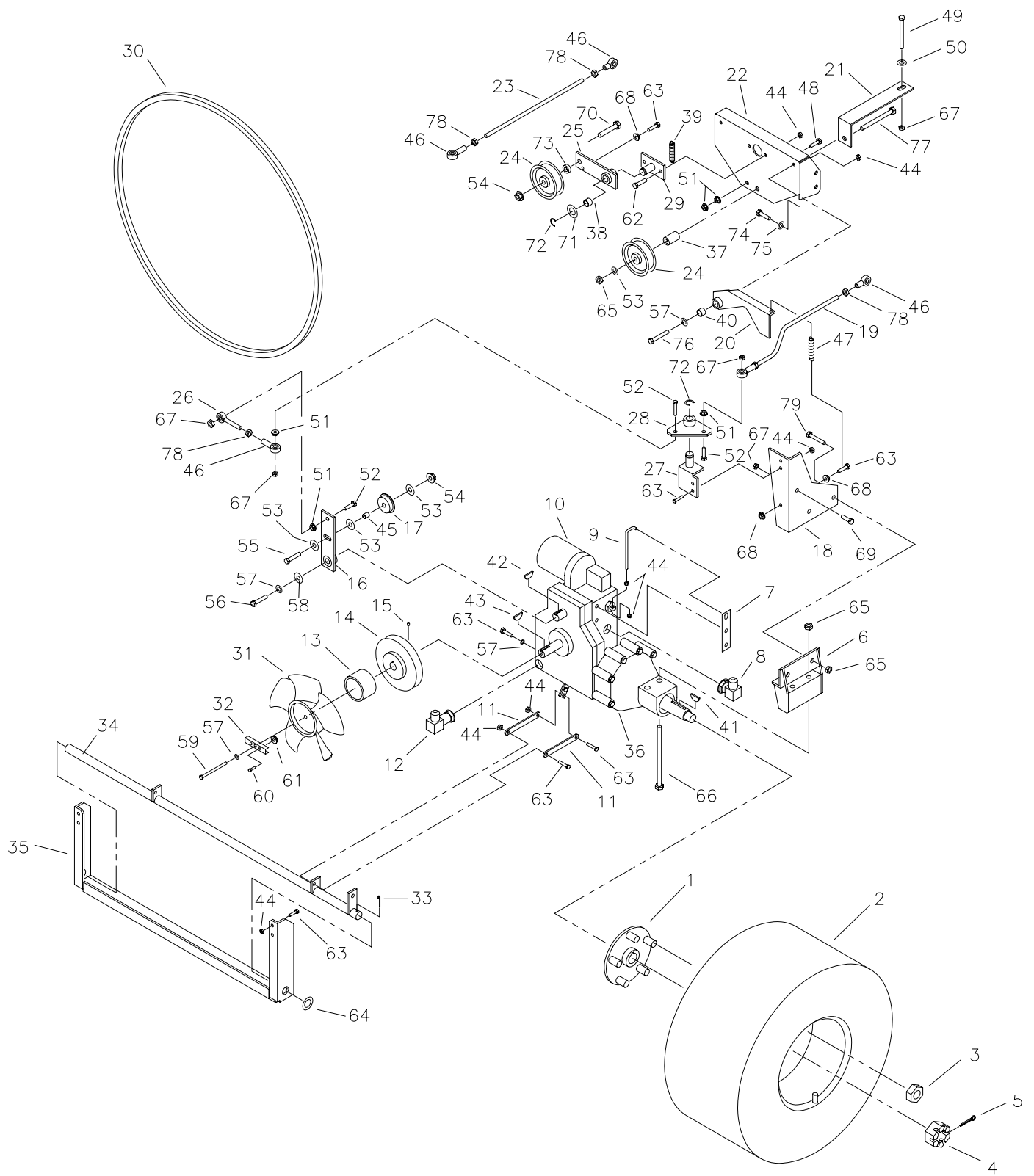
Notes:



MAIN FRAME ASSEMBLY

| # | P/N | QTY | DESCRIPTION | # | P/N | QTY | DESCRIPTION |
|----|--------|-----|----------------------------|----|--------|-----|-----------------------------|
| 1 | 523210 | 1 | FLOOR PAN | 38 | 523063 | 1 | ENGINE DRAIN ADAPTOR |
| 2 | 522109 | 1 | ROCKER AXLE WITH BEARING | 39 | 523064 | 1 | ENGINE DRAIN LINE |
| | 522108 | 1 | ROCK AXLE W/BEARING & PIN | 40 | 523065 | 1 | ENGINE DRAIN PLUG |
| 3 | 522032 | 1 | FRONT BUMPER | 41 | 523214 | 1 | ENGINE COVER STRAP |
| 4 | 753028 | 2 | KNOB | 42 | 522090 | 1 | ENGINE CLUTCH COVER |
| 5 | 105258 | 6 | 5/16" STANDARD FLAT WASHER | 43 | 523025 | 1 | ELECTRIC CLUTCH |
| 6 | 522074 | 1 | LOCK PEDAL WELDMENT | 44 | 523332 | 1 | CLUTCH STOP |
| 7 | 523062 | 1 | LOCK PEDAL THREAD | 45 | 523055 | 1 | SCREEN TUBE |
| 8 | 363145 | 2 | 1" CLAMP COLLAR | 46 | 522086 | 1 | KAWASAKI ENGINE SCREEN TUBE |
| 9 | 363187 | 6 | DRIVE WHEEL BEARING | 47 | 523322 | 1 | CLUTCH SPACER |
| 10 | 111005 | 2 | GREASE ZERK | 48 | 100292 | 3 | 3/8" - 16 X 1" HHCS |
| 11 | 522097 | 2 | 13" STRUT | 49 | 105006 | 1 | 3/8" LOCKWASHER |
| 12 | 100348 | 1 | 5/8" - 11 X 7" HHCS | 50 | 363097 | 3 | TURNBUCKLE SPACER |
| 13 | 104261 | 1 | 5/8" - 11 NYLOC NUT | 51 | 109022 | 3 | 8 M - 1.25 X 50 MM HHCS |
| 14 | 523098 | 1 | AXLE TUBE | 52 | 105005 | 3 | 5/16" LOCKWASHER |
| 15 | 523302 | 2 | WHEEL BEARING | 53 | 753027 | 2 | 3/8" DISC SPRING WASHER |
| 16 | 523280 | 1 | FRONT WHEEL COMPLETE | 54 | 373089 | 2 | RETAINING WASHER |
| 17 | 522025 | 2 | LIFT MOUNT | 55 | 109019 | 1 | 10 M - 1.5 X 30 MM HHCS |
| 18 | 523111 | 4 | 3/4" PLASTIC BUSHING | 56 | 100255 | 1 | 1/4" - 20 X 1 1/4" HHCS |
| 19 | 363201 | 4 | FUEL TANK PAD | 57 | 109001 | 11 | 5/16" - 18 WHIZLOC NUT |
| 20 | 323697 | 2 | SELF FORMING CLIP | 58 | 100274 | 2 | 5/16" - 18 X 1 1/4" HHCS |
| 21 | 522042 | 1 | FRAME WELDMENT | 59 | 100276 | 8 | 5/16" - 18 X 1 3/4" HHCS |
| 22 | 363117 | 1 | TENSION SPRING | 60 | 104250 | 5 | 5/16" - 18 NYLOC NUT |
| 23 | 523005 | 1 | LOCK ROD | 61 | 100004 | 2 | 1/4" - 20 X 1" HHTB |
| 24 | 522064 | 1 | MAIN LIFT SHAFT | 62 | 109000 | 2 | 1/4" - 20 WHIZLOCK NUT |
| 25 | 522028 | 1 | LIFT PEDAL WELDMENT | 63 | 105256 | 2 | 1/4" STANDARD FLAT WASHER |
| 26 | 523061 | 1 | LIFT PEDAL THREAD | 64 | 104255 | 4 | 1/4" - 20 NYLOC NUT |
| 27 | 107255 | 2 | MACHINE KEY | 65 | 100252 | 2 | 1/4" - 20 X 3/4" HHCS |
| 28 | 523012 | 1 | TENSION HUB | 66 | 109018 | 4 | 8 M - 1.25 X 25 MM HHCS |
| 29 | 523119 | 1 | SMALL SPROCKET W/HUB | 67 | 363226 | 4 | DISC SPRING WASHER |
| 30 | 523138 | 2 | 3/4" CLAMP COLLAR | 68 | 100273 | 4 | 5/16" - 18 X 1" HHCS |
| 31 | 522084 | 1 | LIFT MOUNT PLATE WELDMENT | 69 | 363006 | 1 | CASTER SPACER |
| 32 | 523122 | 1 | LIFT CHAIN | 70 | 523043 | 1 | LIFT CABLE |
| 33 | 523123 | 1 | CONNECTOR LINK | 71 | 100271 | 1 | 5/16" - 18 X 3/4" HHCS |
| 34 | 523120 | 1 | LARGE SPROCKET W/HUB | 72 | 522106 | 1 | ROCKER AXLE PIN |
| 35 | 523289 | 1 | HYDRO DRIVE PULLEY | 73 | 100260 | 2 | 1/4" - 20 X 2 1/2" HHCS |
| 36 | 523216 | 2 | FAN COVER | 74 | 523049 | 1 | RADIATOR OVERFLOW HOSE |
| 37 | 523109 | 1 | LIFT TENSION SPRING | | | | |

Notes:



HYDROSTATIC AXLE ASSEMBLY

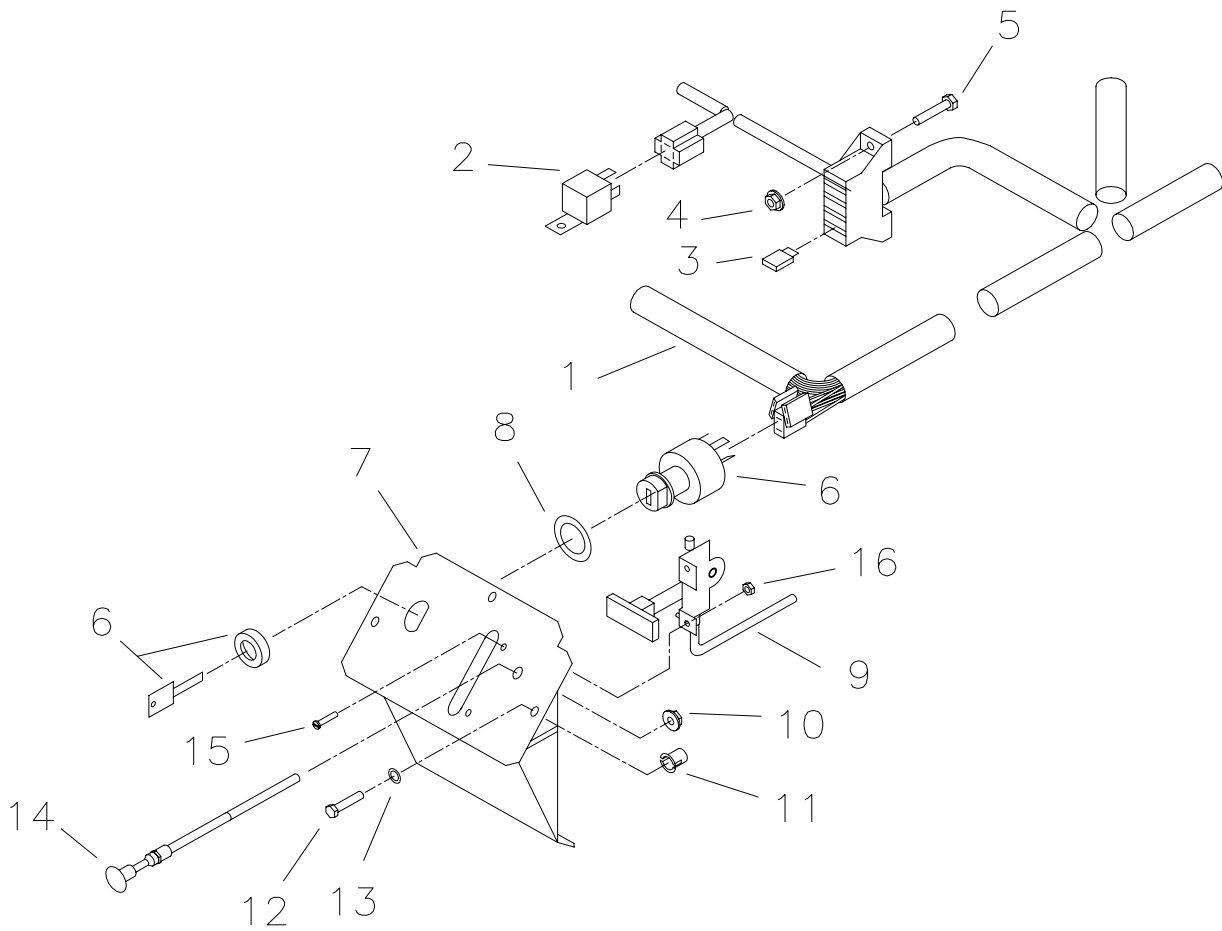
| # | P/N | QTY | DESCRIPTION | # | P/N | QTY | DESCRIPTION |
|----|--------|-----|-----------------------------|----|--------|-----|---------------------------|
| 1 | 453064 | 2 | WHEEL HUB | 37 | 523277 | 1 | IDLER SPACER |
| 2 | 523306 | 2 | 20" WHEEL & TIRE | 38 | 253059 | 1 | ENGAGEMENT BUSHING |
| | 523290 | 2 | RIM WITH VALVE STEM | 39 | 523048 | 1 | PUMP IDLER SPRING |
| | 523291 | 2 | 20" TIRE | 40 | 523144 | 2 | NEUTRAL PIVOT BUSHING |
| 3 | 103023 | 10 | 1/2" - 20 UNF LUG NUT | 41 | 107012 | 2 | 1/4 X 1" WOODRUFF KEY |
| 4 | 104511 | 2 | 3/4" - 16 UNF HEX NUT | 42 | 107003 | 2 | 1/8 X 1/2" WOODRUFF KEY |
| 5 | 106763 | 2 | 1/8" X 1 1/4" COTTER PIN | 43 | 107008 | 2 | 3/16 X 5/8" WOODRUFF KEY |
| 6 | 522038 | 2 | AXLE MOUNT | 44 | 104255 | 8 | 1/4" - 20 NYLOC NUT |
| 7 | 523262 | 2 | COAST TAB | 45 | 523143 | 2 | BEARING SPACER |
| 8 | 523058 | 2 | RETURN ADAPTOR | 46 | 453081 | | .312 ROD END (F) |
| 9 | 523264 | 2 | COAST LOCK | 47 | 363117 | 2 | TENSION SPRING |
| 10 | 523303 | 2 | OIL FILTER - TRANSAXLE | 48 | 100301 | 1 | 3/8" - 16 X 3 1/4" HHCS |
| 11 | 523155 | 4 | PARK LINK | 49 | 100280 | 1 | 5/16" - 18 X 2 3/4" HHCS |
| 12 | 523060 | 1 | RH FEED ADAPTOR | 50 | 105257 | 1 | 5/16" FLAT WASHER |
| | 523059 | 1 | LH FEED ADAPTOR | 51 | 109001 | 4 | 5/16" - 18 WHIZLOCK |
| 13 | 523070 | 2 | FAN HUB | 52 | 100274 | 6 | 5/16" - 18 X 1 1/4" HHTB |
| 14 | 523289 | 2 | HYDROSTAT DRIVE PULLEY | 53 | 105260 | 6 | 3/8" STANDARD FLAT WASHER |
| 15 | 103293 | 2 | 5/16" - 18 X 3/8" SET SCREW | 54 | 109007 | 2 | 3/8" - 16 WHIZLOCK NUT |
| 16 | 522049 | 2 | PUMP ARM | 55 | 100293 | 2 | 3/8" - 16 X 1 1/4" HHCS |
| 17 | 523142 | 2 | NEUTRAL BEARING | 56 | 100005 | 2 | 1/4" - 20 X 1 1/4" HHCS |
| 18 | 523252 | 1 | BELL CRANK RISER - LH | 57 | 105004 | 10 | 1/4" LOCKWASHER |
| | 523254 | 1 | BELL CRANK RISER - RH | 58 | 253025 | 2 | RETAINING WASHER |
| 19 | 523157 | 1 | CONTROL ROD - RH | 59 | 100260 | 2 | 1/4" - 20 X 2 1/2" HHCS |
| 20 | 522051 | 1 | RH NEUTRAL ARM | 60 | 109009 | 2 | #10 - 24 X 3/4" HHCS |
| | 522053 | 1 | LH NEUTRAL ARM | 61 | 109006 | 2 | #10 - 24 WHIZLOCK NUT |
| 21 | 523260 | 1 | MID FRAME BRACE | 62 | 100004 | 2 | 1/4" - 20 X 1" HHTB |
| 22 | 522076 | 1 | HYDRO MID FRAME | 63 | 100252 | 8 | 1/4 - 20 X 3/4" HHCS |
| 23 | 454012 | 1 | UPPER CONTROL LINK ASSBLY | 64 | 105269 | 1 | 3/4" FLAT WASHER SAE |
| 24 | 363169 | 2 | SMALL IDLER | 65 | 104257 | 9 | 3/8" - 16 NYLOC NUT |
| 25 | 252017 | 1 | ENGAGEMENT ARM W/BUSHING | 66 | 100306 | 4 | 3/8" - 16 X 5" HHCS |
| | 252011 | 1 | ENGAGEMENT ARM ONLY | 67 | 104256 | 4 | 5/16" - 18 HEX NYLOC NUT |
| 26 | 453082 | 2 | 5/16" ROD END (M) | 68 | 109000 | 6 | 1/4" - 20 WHIZLOCK NUT |
| 27 | 522068 | 1 | BELL CRANK MOUNT - LH | 69 | 100271 | 2 | 5/16" - 18 X 3/4" HHCS |
| | 522070 | 1 | BELL CRANK MOUNT - RH | 70 | 100296 | 1 | 3/8" - 16 X 2 HHCS |
| 28 | 523241 | 2 | BELL CRANK CONTROL | 71 | 105267 | 1 | 5/8" FLAT WASHER SAE |
| 29 | 362033 | 1 | BELL CRANK MOUNT | 72 | 108500 | 3 | 5/8" - E- RING |
| 30 | 523106 | 1 | PUMP BELT | 73 | 363097 | 1 | TURNBUCKLE SPACER |
| 31 | 523323 | 2 | HYDRO FAN | 74 | 100271 | 4 | 5/16" - 18 X 3/4" HHCS |
| 32 | 523092 | 2 | FAN RETAINER | 75 | 105005 | 4 | 5/16" LOCKWASHER |
| 33 | 106763 | 1 | 1/8 X 1 1/4" COTTER PIN | 76 | 100256 | 2 | 1/4" - 20 X 1 1/2" HHCS |
| 34 | 522058 | 1 | PARK SHAFT | 77 | 100301 | 1 | 3/8" - 16 X 3 1/4" HHCS |
| 35 | 522044 | 1 | LOWER FAN GUARD | 78 | 104752 | 6 | 5/16" - 24 JAM NUT |
| 36 | 523026 | 1 | HYDRO TRANSAXLE - RH | 79 | 100296 | 4 | 3/16" - 16 X 2" HHCS |
| | 523027 | 1 | HYDRO TRANSAXLE - LH | | | | |

Notes:

CONTROL ASSEMBLY

| # | P/N | QTY | DESCRIPTION | # | P/N | QTY | DESCRIPTION |
|---|--------|-----|-----------------------|----|--------|-----|-------------------------------|
| 1 | 523284 | 1 | WIRE HARNESS | 9 | 523038 | 1 | THROTTLE CABLE |
| 2 | 523042 | 2 | RELAY | 10 | 109008 | 1 | 3/8" - 24 WHIZLOCK NUT |
| 3 | 523147 | 1 | 10 AMP FUSE | 11 | 753037 | 4 | NUT RETAINER |
| | 523146 | 1 | 15 AMP FUSE | 12 | 100004 | 4 | 1/4" - 20 X 1" HHTB |
| | 523145 | 1 | 20 AMP FUSE | 13 | 105004 | 4 | 1/4" LOCK WASHER |
| 4 | 109006 | 1 | #10 - 24 WHIZLOCK NUT | 14 | 523037 | 1 | CHOKE CABLE |
| 5 | 109009 | 2 | #10 - 24 X 3/4" HHCS | 15 | 101039 | 2 | #10 - 24 X 5/8" MACHINE SCREW |
| 6 | 523035 | 1 | IGNITION SWITCH | 16 | 104252 | 2 | #10 - 24 HEX NYLOC NUT |
| 7 | 523208 | 1 | CONTROL PANEL | 17 | 523313 | 1 | KEY |
| 8 | 523286 | 1 | SWITCH RETAINER | | | | |

Notes:





PTO ASSEMBLY

| # | P/N | QTY | DESCRIPTION | # | P/N | QTY | DESCRIPTION |
|----|--------|-----|----------------------------|----|--------|-----|----------------------------|
| 1 | 523366 | 1 | GEAR BOX BELT | 28 | 523327 | 2 | IDLER SPRING |
| 2 | 105005 | 4 | 5/16" LOCK WASHER | 29 | 522016 | 1 | IDLER ARM |
| 3 | 105258 | 6 | 5/16" STANDARD FLAT WASHER | 30 | 523111 | 3 | 3/4" PLASTIC BUSHING |
| 4 | 522121 | 1 | GEAR BOX SUPPORT | 31 | 523324 | 1 | 4" IDLER - DECK |
| 5 | 523314 | 1 | GEAR BOX | 32 | 36364 | 1 | ENGAGEMENT IDLER |
| 6 | 523416 | 1 | YOKE SHAFT | 33 | 363216 | 3 | TAPER LOCK SHEAVE |
| 7 | 523417 | 1 | YOKE TUBE | 34 | 523242 | 2 | CLEVIS PIN - LONG |
| 8 | 103295 | 4 | 3/8" - 16 X 1/2" SETSCREW | 35 | 523244 | 4 | #3 HAIR PIN COTTER |
| 9 | 523108 | 1 | BLADE BELT | 36 | 522008 | 1 | 52" SUB-PLATE |
| 10 | 100339 | 1 | 1/2" - 13 X 6" HHCS | 37 | 522040 | 2 | DECK ARM WELDMENT |
| 11 | 322007 | 1 | CASTER SUPPORT W/BUSHING | 38 | 523243 | 4 | CLEVIS PIN - SHORT |
| 12 | 363007 | 2 | FLANGE BEARING | 39 | 482017 | 1 | GRASS DEFLECTOR |
| 13 | 104259 | 1 | 1/2" - 13 NYLOC NUT | 40 | 103293 | 6 | 5/16" - 18 X 3/8" SETSCREW |
| 14 | 363006 | 4 | SPACER | 41 | 100274 | 6 | 5/16" - 18 X 1 1/4" HHCS |
| 15 | 522022 | 1 | DECK STRUT | 42 | 363242 | 3 | BLADE SPINDLE KEY |
| 16 | 109020 | 1 | 7/16 X 1 3/4" QUICK PIN | 43 | 363080 | 1 | RIGHT HAND EYE BOLT |
| 17 | 363307 | 2 | AXLE TUBE | 44 | 603023 | 1 | ANTI-SCALP ROLLER |
| 18 | 523434 | 4 | OIL LITE BUSHING | 45 | 109001 | 1 | 5/16" - 16 WHIZLOCK |
| 19 | 523433 | 2 | ROLLER BEARING | 46 | 363053 | 3 | BLADE SPINDLE HOUSING |
| 20 | 523432 | 2 | DECK CASTER WHEEL | 47 | 363350 | 6 | BALL BEARINGS |
| 21 | 522004 | 1 | 52' DECK | 48 | 108509 | 6 | RETAINING RING - LARGE |
| 22 | 523084 | 2 | REAR DECK ROLLER | 49 | 108507 | 6 | RETAINING RING - 1" |
| 23 | 522012 | 1 | BELT SHIELD - RH | 50 | 363058 | 3 | BLADE SPINDLE |
| | 522014 | 1 | BELT SHIELD - LH | 51 | 363060 | 3 | DUST CAP |
| 24 | 363215 | 3 | TAPER LOCK HUB | 52 | 373086 | 3 | BLADE SPACER |
| 25 | 523103 | 2 | WATTS LINK | 53 | 363291 | 3 | 18" BLADE |
| 26 | 523095 | 3 | OFF SET PULLEY | 54 | 105268 | 3 | 5/8" FLAT WASHER |
| 27 | 523094 | 1 | SPRING MOUNT DECK | 55 | 100353 | 3 | 5/8" X 9 1/2" HHCS - DECK |

Notes:

PTO ASSEMBLY

| # | P/N | QTY | DESCRIPTION | # | P/N | QTY | DESCRIPTION |
|----|--------|-----|--------------------------|-----|--------|-----|---------------------------|
| 56 | 523121 | 2 | CHAIN | 82 | 523104 | 4 | ROD END - WATTS |
| 57 | 523123 | 2 | CONNECTOR LINK | 83 | 109008 | 4 | 3/8" - 24 WHIZLOCK NUT |
| 58 | 363121 | 3 | 1" WHEEL WASHER | 84 | 522119 | 1 | DECK TENSIONER WELDMENT |
| 59 | 523125 | 2 | ANCHOR STUD | 85 | 523329 | 1 | FLAT IDLER |
| 60 | 363192 | 2 | LARGE YOKE | 86 | 522104 | 1 | IDLER PIVOT |
| 61 | 104256 | 34 | 5/16" - 18 NYLOC NUT | 87 | 523360 | 1 | SPRING HOOK |
| 62 | 104510 | 3 | BLADE NUT | 88 | 100275 | 1 | 5/16" - 16 X 1 1/2" HHCS |
| 63 | 100273 | 21 | 5/16" - 18 X 1" HHCS | 89 | 523355 | 1 | 1" POWER SHAFT |
| 64 | 100274 | 16 | 5/16" - 18 X 1 1/4" HHCS | 90 | 522123 | 1 | POWER SHAFT MOUNT |
| 65 | 100294 | 2 | 3/8" 16 X 1 1/2" HHCS | 91 | 523365 | 1 | CLUTCH BELT |
| 66 | 104257 | 1 | 3/8" NYLOC NUT | 92 | 104257 | | 3/8" - 16 NYLOC NUT |
| 67 | 100295 | | 3/8" - 16 X 1 3/4" HHCS | 93 | 523362 | 1 | CLUTCH TENSION ROD |
| 68 | 100352 | 1 | 5/8" X 9" HHCS | 94 | 363097 | 2 | TURNBUCKLE SPACER |
| 69 | 104261 | 1 | 5/8" NYLOC NUT | 95 | 522117 | 1 | CLUTCH TENSIONER WELDMENT |
| 70 | 100301 | 2 | 3/8" - 16 X 3 1/4 HHCS | 96 | 363177 | 1 | 3/8" PUSH NUT |
| 71 | 100346 | 2 | 5/8" - 11 X 4 1/2" HHCS | 97 | 105260 | | 3/8" FLAT WASHER |
| 72 | 523426 | 2 | 1" BALL BEARING | 98 | 100298 | | 3/8" - 16 X 2 1/2" HHCS |
| 73 | 111002 | 3 | 3/16" DRIVE ZERK | 99 | 523364 | 1 | CLUTCH TENSIONER PULLEY |
| 74 | 105260 | 10 | 3/8" FLAT WASHER | 100 | 253075 | 2 | SPACER |
| 75 | 523357 | 2 | SHAFT BEARING | 101 | 100297 | 2 | 3/8" - 16 X 2 1/4" HHCS |
| 76 | 109007 | 11 | 3/8" - 16 WHIZLOCK NUT | 102 | 373089 | 2 | RETAINING WASHER |
| 77 | 100292 | 6 | 3/8" - 16 X 1" HHCS | 103 | 523415 | X | CROSS (U JOINT) |
| 78 | 100296 | 1 | 3/8" - 16 X 2 HHCS | 104 | 523414 | X | 1" YOKE |
| 79 | 111001 | 1 | GREASE ZERK | 105 | 523418 | X | 3/4" YOKE |
| 80 | 108509 | 2 | E-RING | 106 | 523356 | X | DRIVE SHAFT KIT COMPLETE |
| 81 | 100252 | 1 | 1/4" - 20 X 3/4" HHCS | | | | |

Notes:

RIDER DECAL LIST

| P/N | QTY | DESCRIPTION |
|--------|-----|-----------------------------|
| 363001 | 1 | CAUTION - DISCHARGE |
| 363023 | 2 | DANGER DECAL |
| 363038 | 1 | CAUTION - INSTRUCTION LABEL |
| 363214 | 1 | PRO-LINE DECAL |
| 363232 | 1 | ENCORE LOGO |
| 363290 | 2 | REFUELING CAUTION LABEL |
| 453009 | 2 | ENCORE W/LOGO |
| 453010 | 1 | OIL LABLE |
| 523018 | 1 | IGNITION SWITCH DECAL |
| 523021 | 1 | PTO DECAL |
| 523023 | 1 | PARK BRAKE DECAL |
| 523020 | 1 | LIGHT DECAL |
| 523160 | 1 | THROTTLE DECAL |
| 523301 | 1 | LIFT ASSIST DECAL |
| 523257 | 2 | TENSION DECAL |

Belts for Pro-Line Riders

Belts Required for 52K550R **without** Lift Kit

| | |
|---------|------------------|
| 523108 | Blade Drive Belt |
| 523107X | Deck Drive Belt |
| 523106 | Pump Drive Belt |

Belts Required for 52K555G **without** Lift Kit

| | |
|--------|--------------|
| 523365 | Clutch Belt |
| 523366 | Gearbox Belt |

Belts Required for 52K550R **with** Lift Kit

| | |
|---------|------------------|
| 523108 | Blade Drive Belt |
| 523349X | Deck Drive Belt |
| 523348 | Pump Drive Belt |

Belt Required for 52K555G **with** Lift Kit

| | |
|--------|--------------|
| 523374 | Clutch Belt |
| 523366 | Gearbox Belt |

Belts Required for 61K550R **without** Lift Kit

| | |
|---------|------------------|
| 603050 | Blade Drive Belt |
| 523349X | Deck Drive Belt |
| 523106 | Pump Drive Belt |

Belts Required for 61K550R **with** Lift Kit

| | |
|---------|------------------|
| 603050 | Blade Drive Belt |
| 603053X | Deck Drive Belt |
| 523348 | Pump Drive Belt |

Belts Required for 61K555G **without** Lift Kit

| | |
|--------|--------------|
| 523365 | Clutch Belt |
| 603054 | Gearbox Belt |

Belts Required for 61K555G **with** Lift Kit

| | |
|--------|--------------|
| 523374 | Clutch Belt |
| 603054 | Gearbox Belt |

CONVERSION SHEET EATON to ENCORE

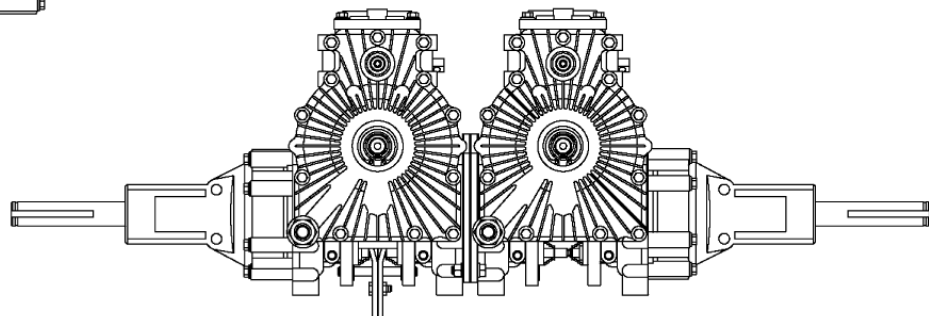
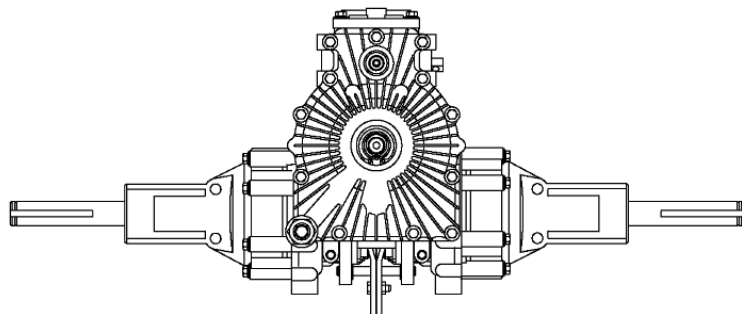
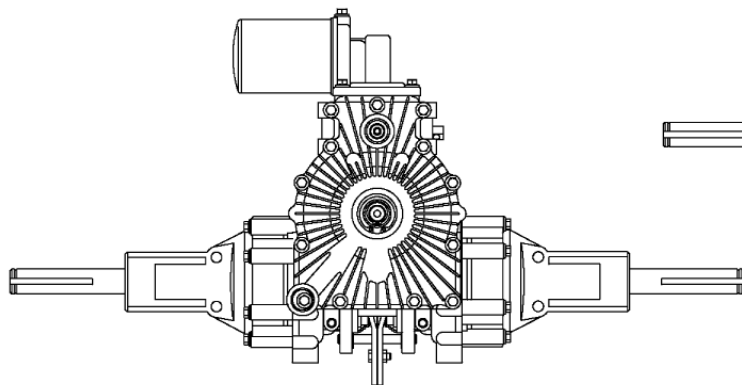
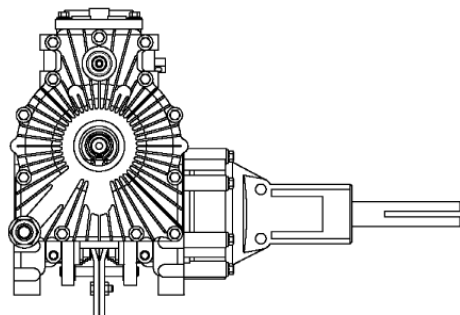
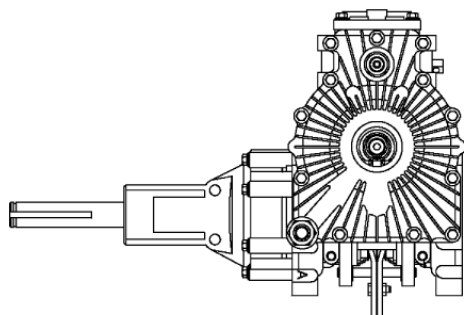
| ENCORE PART # | DESCRIPTION | EATON PART # | ENCORE PART # | DESCRIPTION | EATON PART # |
|------------------|---------------------------|-----------------|------------------|---------------------|-----------------|
| 523303 | OIL FILTER - TRANSAXLE | --- | 523400 | PRIMARY GEAR | 106174 |
| 523304 | AXLE SEAL | 103960 | 523401 | PLANET GEAR | 106167 |
| 523305 | AXLE ASSY | 106215-002 | 523402 | SUN GEAR SECOND | 104984 |
| 523381 | PUMP ROTOR | 106939 | 523403 | SECONDARY CARRIER | 106137 |
| 523382 | CAM RING | 106937 | 523404 | PLANET GEAR SECOND | 106204 |
| 523383 | CONTROL SHAFT | 104935 | 523405 | QUAD SEAL | 106450 |
| 523384 | DUMP VALVE SPRING | 104684 | 523406 | RELIEF VALVE SPRING | 104421 |
| 523385 | DUMP VALVE BRACKET | 105660 | 523407 | RELIEF BALL | 95881-038 |
| 523386 | ORDER P/N 523497 & 523498 | 106054 | 523408 | SEAL INPUT SHAFT | 93955 |
| 523387 | COVER GASKET | 105327 | 523409 | SHAFT INPUT S/A | 106073 |
| 523388 | O-RING DUMP VALVE | 8761-013 | 523410 | BEARING AXLE | 104928 |
| 523389 | AXLE HOUSING GASKET | 106129 | 523411 | OUTPUT AXLE SHAFT | 109216-002 |
| 523390 | FILTER BASE GASKET | 104392 | 523419 | SEAL SHAFT | 103960 |
| 523391 | FILTER BASE (L) | 104386 | 523420 | RETAINING RING 1" | 103983-098 |
| 523392 | FELT GASKET | 106784 | 523431 | PUMP COVER ASSY S/A | 106071 |
| 523393 | REACTION PLATE | 106414 | 523466 | O-RING - DAMPER | UNKNOWN |
| 523394 | BACK UP PLATE | 106104 | 523468 | BACK-UP RING | UNKNOWN |
| 523395 | DRIVE | 104107 | 523469 | PISTON (EATON) | 104962 |
| 523396 | MOTOR ROTOR | 108109 | 523491 | CONTROL SHAFT SEAL | 93891 or 93895 |
| 523397 | INSERT | 103621 | 523026 | RH HYDROSTAT | 771-064 |
| 523398 | RING GEAR | 106027 | 523027 | LH HYDROSTAT | 771-063 |
| 523399 | SUN GEAR FIRST | 104338 | 523514 | WEARPLATE | 111304 |

Note:

The above parts are the only parts Encore has for service parts for the Eaton Transaxle. Any parts not listed you will need to contact Eaton Directly.

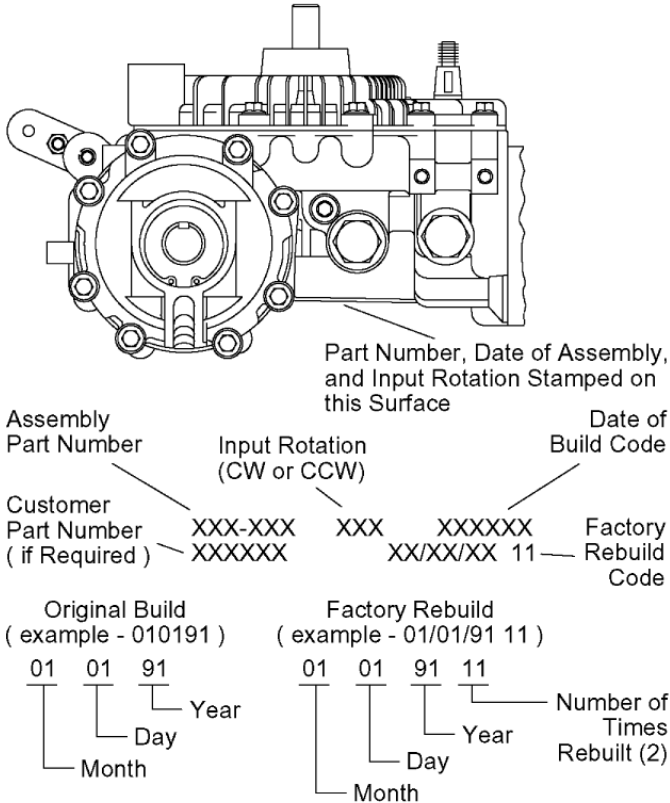


Repair Information



751, 851, 771, and 781 Transaxle

1 The following repair information applies to the Eaton 751, 851, 771, and 781 series hydrostatic transaxles.



2 The transaxle identification information is located opposite the input shaft, on the back of the housing assembly.

3 The build code of the transaxles identifies the month, day and year of the transaxle manufacture. This information is found in the same area as the identification code.

4 When ordering replacement parts for a transaxle, the part(s) order must include the part name, part number, quantity of parts and also the transaxle model number, input rotation and date code.

Transaxles 751, 851, 771, and 781

5 The following procedures describe complete and disassembly and reassembly of the transaxle.

The level of cleanliness maintained while servicing the transaxle could affect its perfor-

mance. Work in a clean area. After disassembly, wash all parts with clean solvent and blow the parts dry with air. Inspect all mating surfaces. Replace any damaged parts that could cause internal leakage. Do not use grit paper, files or grinders on finished parts.

Note: Whenever a transaxle is disassembled, our recommendation is to replace all seals. Lubricate the new seals with petroleum jelly before installation. Use only clean, recommended hydraulic fluid on the finished surfaces at reassembly.

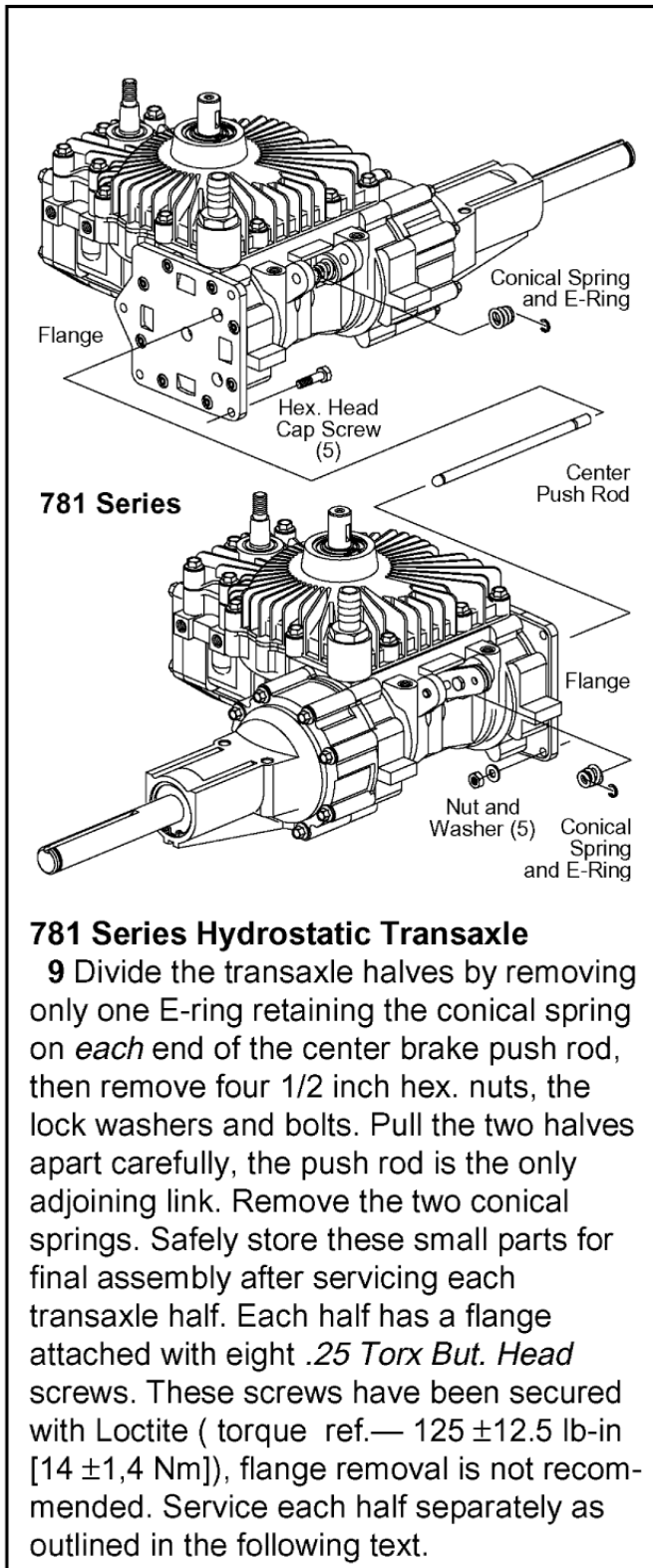
6 The following tools are required for disassembly and reassembly of the transaxle.

- 3/8 in. Socket or End Wrench
- 1 in. Socket or End Wrench
- Ratchet Wrench
- Torque Wrench 300 lb-in [34 Nm]
- 5/32 Hex Wrench
- Small screwdriver (4 in [102 mm] to 6 in. [150 mm] long)
- No. 5 or 7 Internal Retaining Ring Pliers
- No. 4 or 5 External Retaining Ring Pliers
- 6 in. [150 mm] or 8 In. [200 mm] C-clamp
- Piece of Pipe or Hydraulic Tubing (1 in. O.D. x 6 inches long)
- Piece of Pipe or Hydraulic Tubing (1-1/8 in. [29 mm] O.D. x 6 in. [150 mm] long)
- Small Arbor or Hydraulic Press
- 3 or 4 Large Rubber Bands
- Light Petroleum Jelly (such as Vaseline)

7 Seal all open ports before cleaning. Thoroughly clean the transaxle exterior.

Transaxle with Charge Pump
8 After draining the transaxle, use your hand or a filter wrench to remove the filter from the filter base.

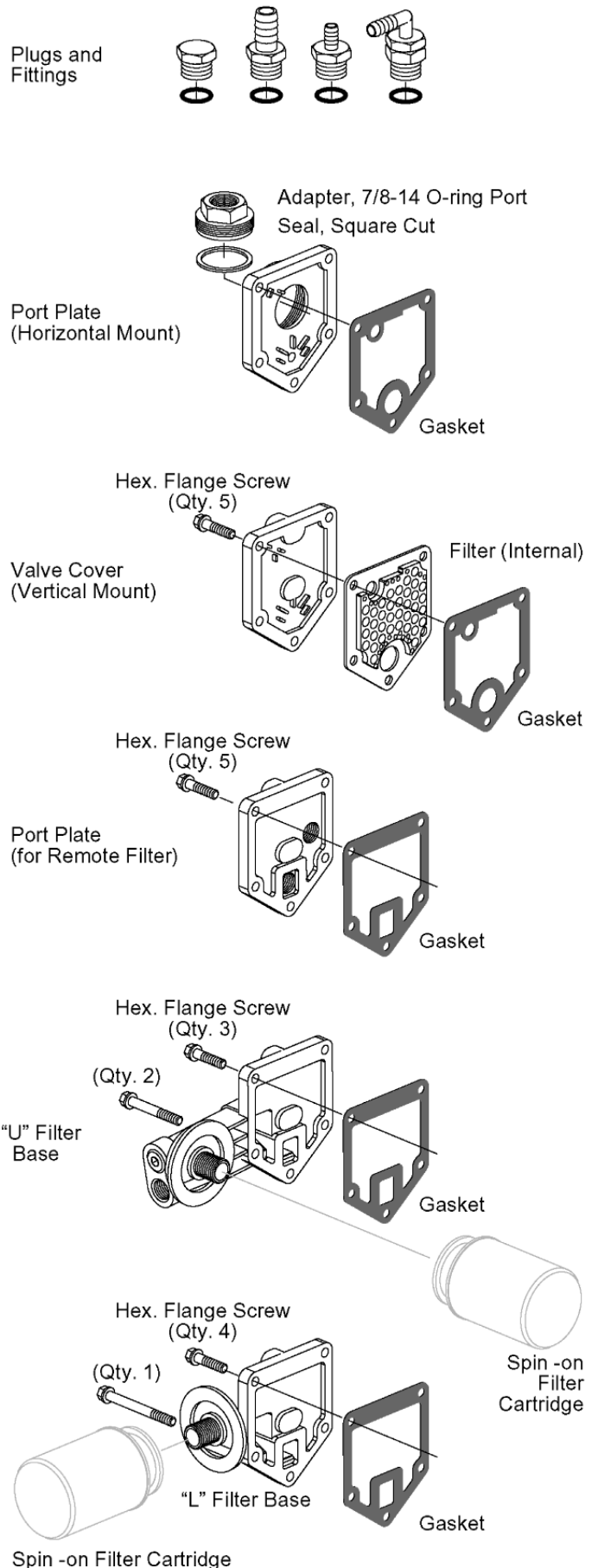
Note: It is best to drain the transaxle through the case drain port with the input shaft in the down position.

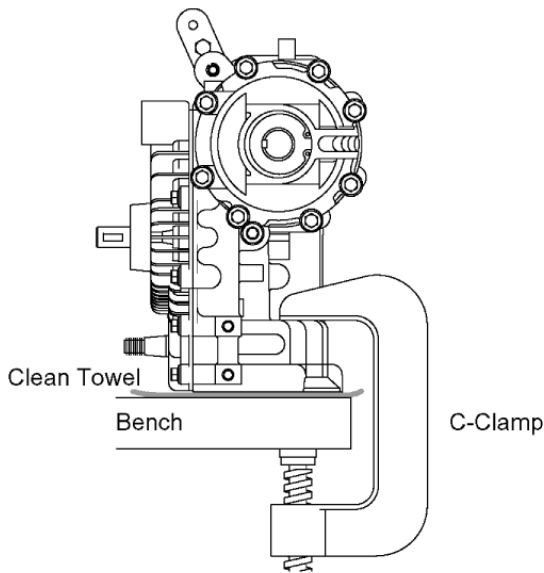


- 10** Using a 3/8 inch socket or end wrench, remove the cap screws from ...
 ... filter base.
 ... valve cover and internal filter.
 ... port plate.

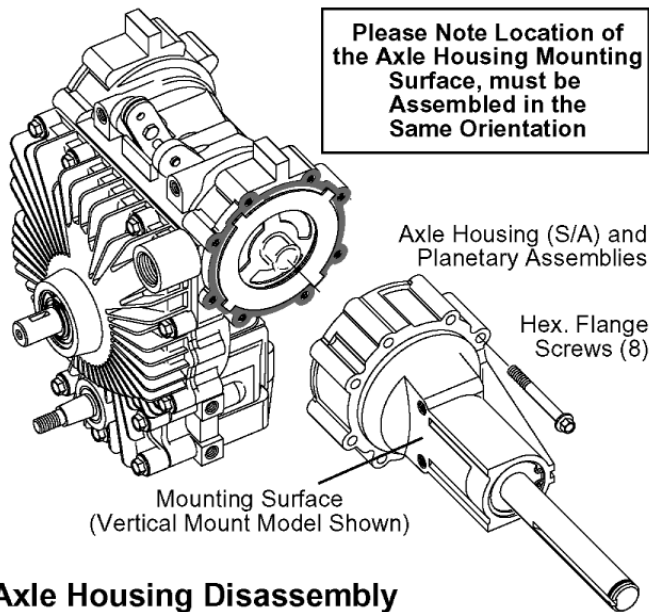
11 Remove gasket.

Note: This gasket may be on the part just removed or on the housing assembly.





12 Position transaxle with this gasket surface toward the bench. Place a clean towel between the transaxle and the bench. This towel protects the sealing surface from possible damage during repositioning. Use a 6 inch [150 mm] to 8 inch [200 mm] C-clamp to secure the transaxle to a suitable work surface. Be careful not to over tighten the C-clamp when securing the transaxle.

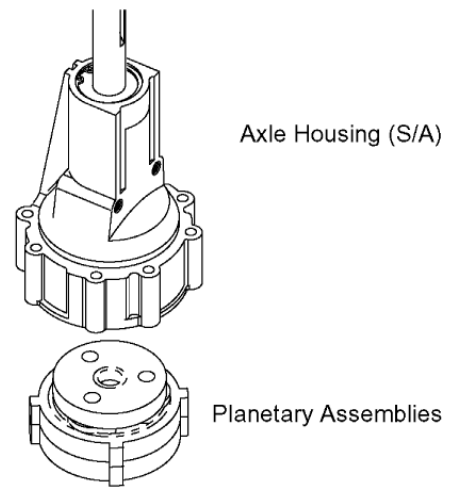


Axle Housing Disassembly

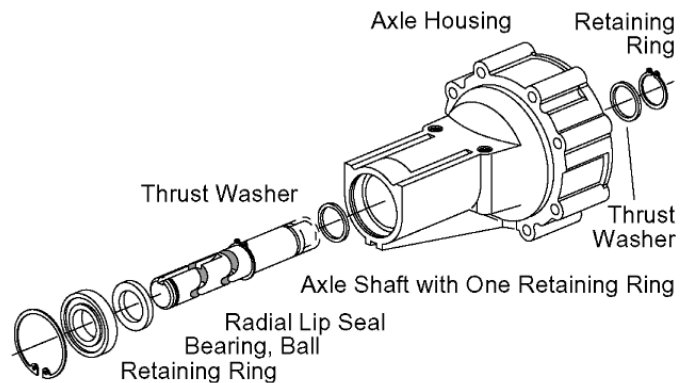
13 With the transaxle secure, use a 3/8 inch socket or end wrench to remove the flange screws from one (A-side or B-side) axle housing assembly.

14 After removing the flange screws, carefully remove the axle housing assembly from the housing assembly.

Caution: Retain the planetary assemblies in the axle housing assembly during removal.



15 To disassemble the axle housing assembly, carefully position the axle housing assembly on a clean flat surface, then separate axle housing from the planetary assemblies as shown.



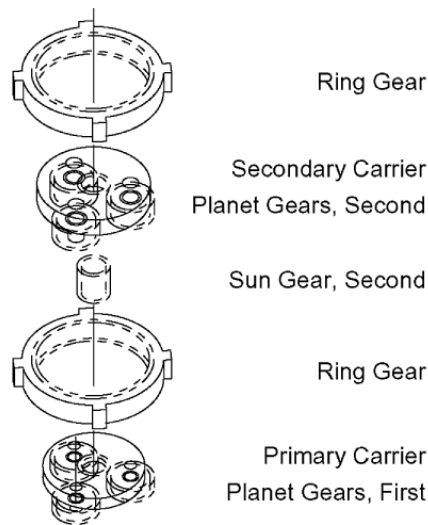
16 Position the axle housing assembly with the output end of the axle shaft in the up position. Using a No. 5 or 7 internal retaining ring pliers, remove the ball bearing retaining ring from the axle housing.

17 Re-position the axle housing with the splined end of the axle in the up position. Using a No. 4 or 5 external retaining ring pliers, remove the retaining ring and thrust washer from the axle shaft.

18 Remove the axle from the axle housing by using a small press or by tapping the splined end of the axle shaft with a plastic head hammer. This will dislodge the seal and bearing from the axle housing.

19 After separating the axle shaft from the axle housing, remove the ball bearing, seal and thrust washer from the axle shaft. The thrust washer may be in the axle housing.

Note: The retaining ring remaining on the axle shaft need not be removed.



20 To disassemble the planetary assemblies for inspection and cleaning, first remove the ring gear (from the secondary carrier/ planet gears).

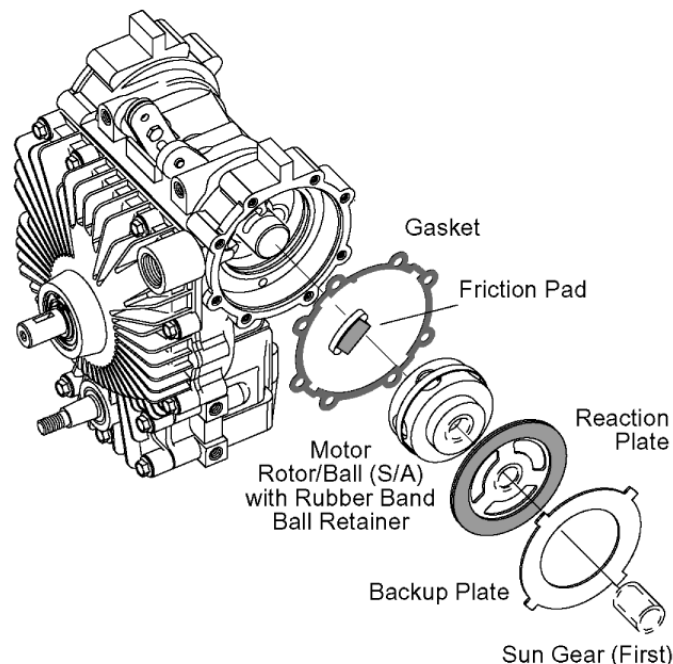
21 Next, putting a slight squeeze on the secondary carrier planet gears, remove the three secondary planet gears, and carrier.

22 Turn the assembly over and remove the secondary planet gears for inspection and cleaning.

23 Remove the sun gear and remaining ring gear.

24 Again, putting a slight squeeze on the remaining carrier planet gears, remove planet gears, and carrier from the backup plate.

25 Shown above are both the primary and secondary carrier assemblies. The planet gears may be removed for inspection and cleaning.



26 Next, remove the reaction plate from the primary sun gear.

27 Remove the primary sun gear from the motor rotor assembly.

28 Remove the small friction brake pad assembly from its recessed pocket located in the axle housing.

29 Shown in previous drawing are the three major parts used in the Eaton transaxle wet brake assembly, the friction pad assembly, reaction plate and backup plate. When the brake is applied, the rotating reaction plate is squeezed between the stationary friction pad and the backup plate.

30 Remove the axle housing assembly gasket.

Note: This gasket may have remained on the axle housing.

31 Normally any further disassembly of the brake levers, push rods and etc. is not necessary nor recommended. The brake lever shims located between the two brake levers is used to adjust the brake lever movement. This adjustment was made during the initial transaxle assembly.

Note: Standard single handle brake arrangement shown.

Motor Rotor Disassembly

32 Important: Be extremely careful when removing the motor rotor assembly. The ball pistons are spring loaded in the bores and must remain intact because each ball piston is matched to its respective bore.

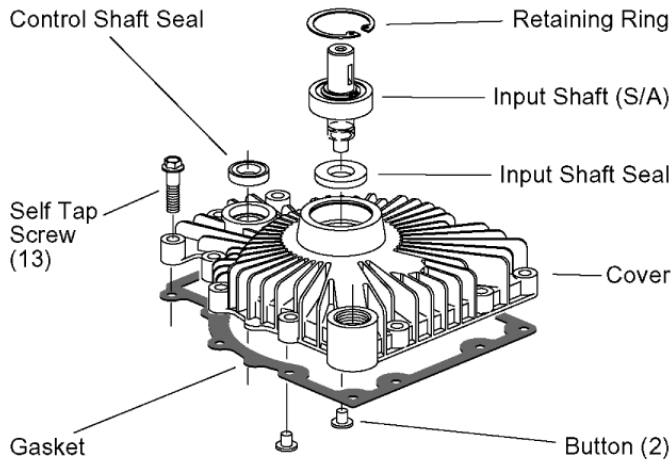
The best way to remove the motor rotor assembly is to place a separate motor race on top of the existing motor race in the housing assembly. Hold the separate race securely in position. Then carefully pull the motor rotor assembly outward until the ball pistons are fully engaged in the groove located in the center of the separate race. Carefully remove the rotor assembly and race together as a set, handling the motor rotor assembly only.

Note: If a separate motor race is not available, work a wide rubber band around the outside of the motor rotor to hold the ball pistons in their bores.

33 It is essential that the ball pistons be retained in their bores during handling. This is

especially true for the motor rotor(s), as the motor ball pistons are spring loaded in the bores.

Note: The remaining transaxle axle housing assembly, if applicable, can be serviced at this time (ref. steps 12-34) .



34 Reposition the housing assembly. Using a 3/8 inch socket or end wrench, remove the self tap screws from the cover assembly.

Note: One self tap screw is located in the case drain port.

35 With all self tap screws removed (13), carefully separate and remove the cover from the housing assembly.

36 Turn the cover assembly over and remove the two buttons.

Note: These two buttons may have dropped out into the housing assembly during removal of the cover.

37 Turn the cover assembly back over and using a No. 5 or 7 internal retaining ring pliers, remove the input shaft retaining ring.

38 Reposition and support the cover allowing room for shaft removal. With the input shaft in the down position, use a plastic head hammer or press to remove the input shaft assembly from the cover.

39 No further disassembly of the shaft and bearing assembly is required as they are serviced as an assembly.

40 Using a screwdriver or similar tool, drive the input shaft seal from the cover.

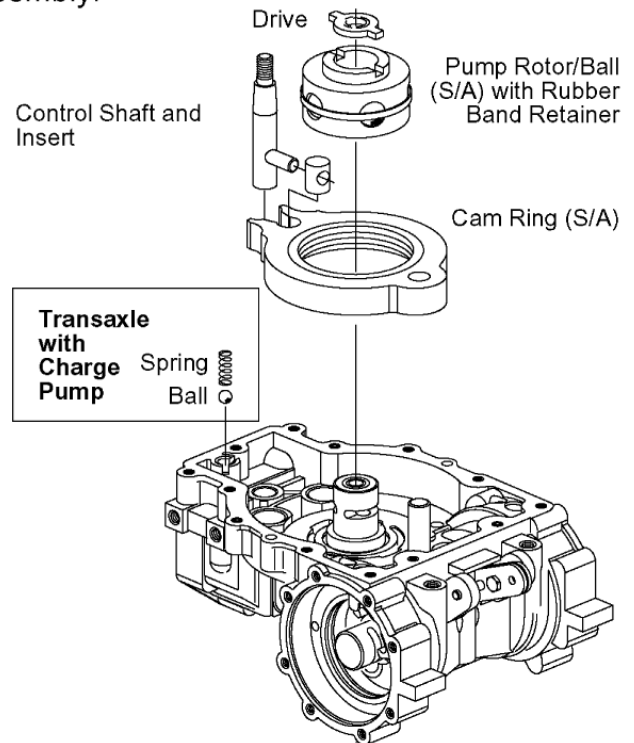
41 To remove the control shaft seal, reposition the cover. Using a small screwdriver or similar

tool, pry the control shaft seal from the cover.

42 Remove the cover gasket from the housing.

Note: The gasket may have remained on the cover.

43 Remove the drive from the pump rotor assembly.



Transaxle with Charge Pump

44 Remove the charge pressure relief valve spring from the housing.

45 Using a pencil magnet or similar tool, remove the charge pressure relief ball from its seat in the housing.

46 Remove the control shaft and insert from the housing and cam ring assembly.

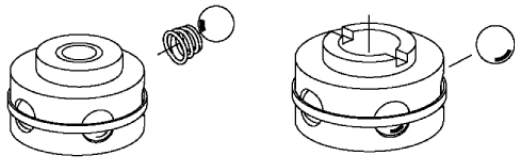
47 Remove the cam ring insert from the control shaft.

48 Remove the cam ring assembly from the housing.

49 Carefully remove the pump rotor assembly from the housing, making sure the ball pistons are not dislodged from their bores.

Important: It is essential that the pump rotor assembly remain intact during handling as each ball piston is matched to its respective bore.

50 Install a wide rubber band around the pump rotor to retain the ball pistons in their bores.



Motor Rotor/Ball (S/A)

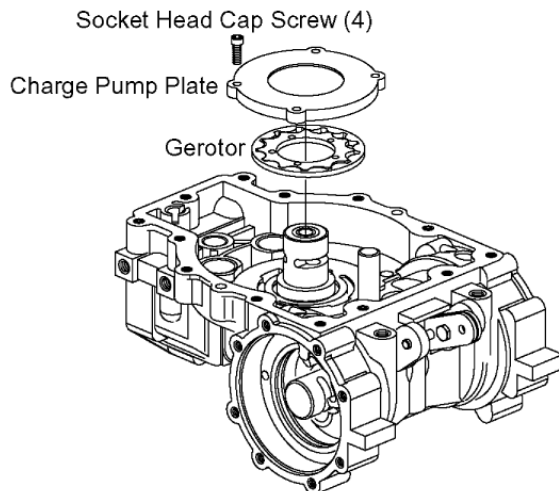
Pump Rotor/Ball (S/A)

Pump and Motor Rotor Inspection

51 Disassemble and inspect the rotor assembly in the following manner. Remove the piston balls from the rotor, one at a time, working clockwise from the letter stamped in the rotor face. Place the piston balls in a prepared container (use a container such as an egg carton or ice cube tray to hold the balls).

Note: The balls must be replaced in the same bores from which they were removed because they are all select fit.

Check for broken or collapsed springs in the motor rotor. When broken or collapsed springs are found with no other irregularities, the springs may be replaced individually without replacing the complete motor rotor assembly. Inspect the piston balls. They must be smooth and completely free of any irregularities. Inspect the rotor bores, rotor bushing and pintle journals for irregularities or excessive clearance. The ball piston to rotor bore clearance is select fit electronically from .0002 inch [.005 mm] to .0006 inch [.015 mm]. When irregularities are noted, replace the complete rotor assembly. Install the ball pistons in their matching bores. Hold them in place with a rubber band or separate race.



Transaxle with Charge Pump

52 To inspect the charge pump assembly,

use a 5/32 hex key to remove the cap screws from the charge pump plate.

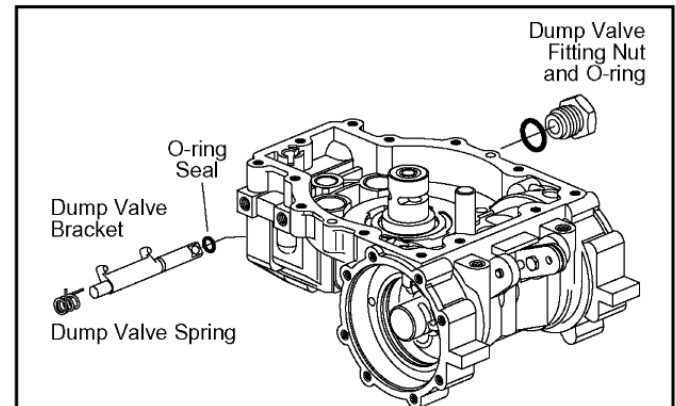
53 Remove the charge pump plate from the housing.

54 Remove the charge pump gerotor from the housing.

55 The pump and motor journals and cam ring dowel cannot be removed once they have been installed in the housing.

Note: Inspect the pump and motor journals for any irregularities. If any are found, the housing must be replaced.

56 In most cases, we do not recommend removal of the dampening pistons for inspection or cleaning. Normal flushing should be all that is required for cleaning.



Transaxle with Dump Valve

57 To remove the dump valve assembly, first use a 1 inch socket or end wrench to remove the dump valve nut from the housing.

58 Remove the o-ring from the dump valve nut.

59 After removing the dump valve nut, remove the dump valve bracket and spring from the housing by sliding them over and lifting upward.

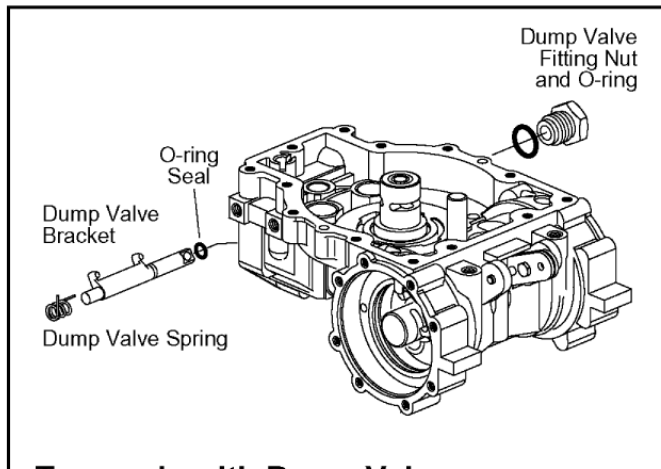
60 Remove the spring from the dump valve bracket.

61 Remove the o-ring from the dump valve bracket.

62 We do not recommend removal of the check valve assemblies for inspection or cleaning. Once again, normal flushing should be all that is required to clean the check valves.

Transaxle Reassembly

63 Before reassembling the transaxle, clean all parts and assemblies with clean solvent and blow them dry with compressed air. Inspect and replace all scratched or damaged parts. Replace all gaskets, seals and seal rings. Lubricate all seals with petroleum jelly (Vaseline) for retention during assembly. Freely lubricate all bearings and finished part surfaces with clean hydraulic fluid to provide lubrication at start-up.



Transaxle with Dump Valve

64 To reassemble the dump valve, first lubricate and install the o-ring in the groove located in the dump valve bracket.

65 Install the spring on the dump valve bracket. It should be installed with the right angle bend of the spring pointing inward, as shown here.

66 Install the spring and dump valve bracket in the housing.

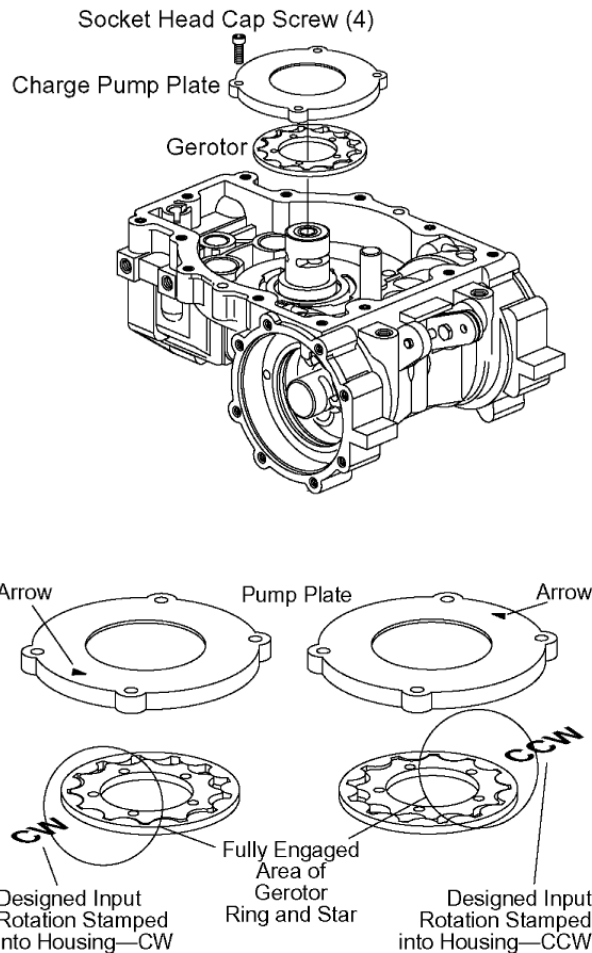
67 The spring is properly positioned when the longest leg points toward the check valve assembly.

68 Lubricate and install the o-ring around the dump valve nut.

69 Install the nut over the dump valve bracket, into the housing.

Note: Make sure you do not damage the dump valve o-ring during installation.

70 Using a 1 inch socket or end wrench, torque the dump valve nut to 150 lb-in [17 Nm].



Transaxle with Charge Pump

71 Install the gerotor on the housing.

Note: The gerotor ring and star have been marked with a dot on each, the ring and star can be placed with these marks up or down but both marks should be on the same side.

72 For easier assembly, rotate the gerotor outer ring to fully engage with the inner star. The fully engaged side of the gerotor should point towards the designed input rotation (CW or CCW as noted on the housing).

Note: The designed input rotation is stamped on the back side of the housing and also next to the gerotor on the inside.

73 Freely lubricate the gerotor with clean hydraulic fluid to provide lubrication at start-up.

74 The charge pump plate has a small arrow cast into the outer face of the plate.

At assembly, this arrow must face toward the input rotation designated in the housing.

Note: High pressure charge pump—gerotor and plate is a matched set and is not sold separately. Class II gerotor and plate are not a matched set.

75 Aligning the rotation arrow with the input rotation, install the pump plate over the gerotor.

76 Install the four cap screws in the pump plate finger tight.

77 The bottom side of the pump rotor assembly incorporates five drive pins. At assembly, these pins must be engaged with the inner star of the charge pump gerotor.

78 Lubricate and install the pump rotor assembly on the pump journal, engaging the drive pins with the inner star of the gerotor.

79 Rotate the pump rotor assembly several times to center the pump plate on the gerotor.

While continuing to rotate the pump rotor assembly, alternately tighten the charge pump plate cap screws to 49 lb-in [6 Nm].

80 Remove the rubber band from the pump rotor assembly. Install the cam ring assembly in the housing with the flush side of the cam ring facing outward.

81 Install the cam ring insert on the control shaft pivot dowel.

82 Install the control shaft assembly, first aligning the cam ring insert with the cam ring assembly and then with the housing.

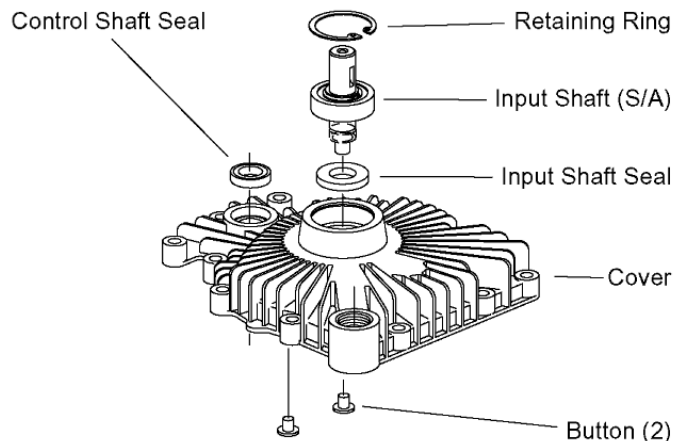
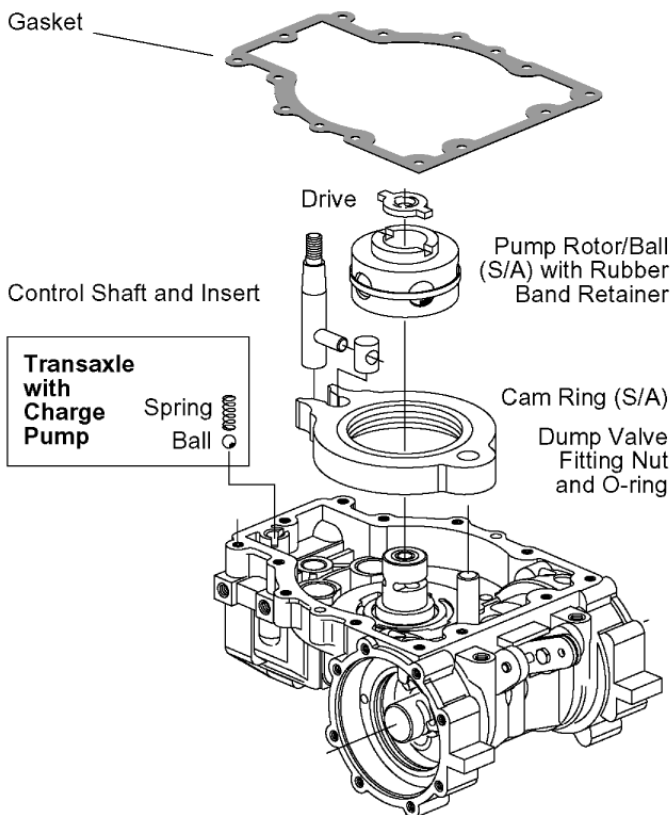
Transaxle with Charge Pump

83 Drop the charge pressure relief valve ball in its bore.

84 Install the charge pressure relief valve spring in its bore.

85 Install the drive in the pump rotor assembly.

86 Install the cover gasket on the housing assembly.



Cover Reassembly

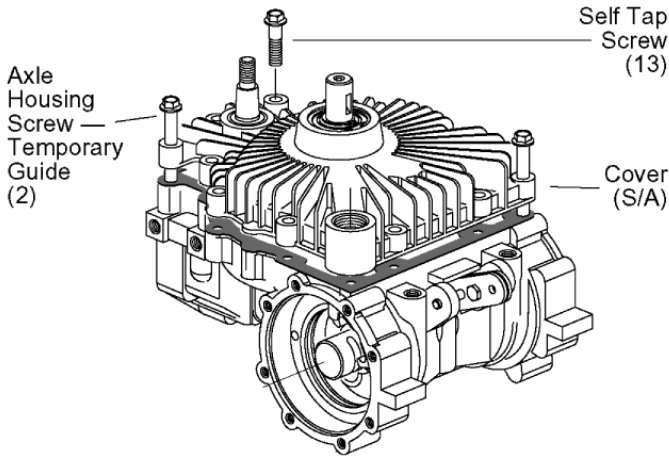
87 Lubricate and install the control shaft oil seal with the seal lip pointing inward. Press or drive the seal into the seal counterbore.

88 Lubricate and install the input shaft seal with the seal lip pointing inward. Press or drive the seal into the counterbore.

89 Press or drive the input shaft assembly into the cover.

90 Install the input shaft assembly retaining ring, making sure it is firmly seated in the retaining ring groove.

91 To help retain the buttons during assembly, apply a small amount of petroleum jelly to them. Install the buttons in the holes located in the cover assembly.



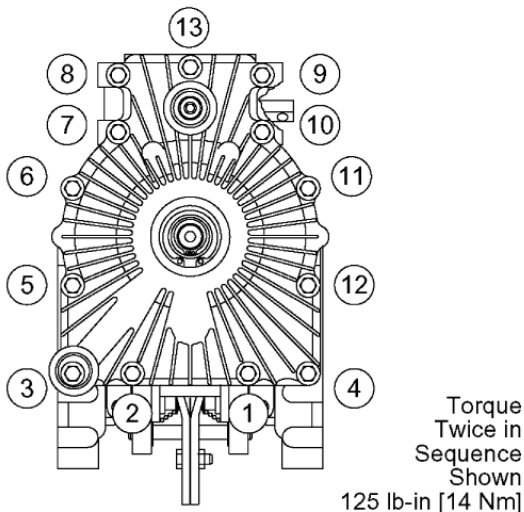
92 Install the cover assembly by carefully aligning it with the control shaft, cam ring pivot dowel and pump rotor drive.

Transaxle with Charge Pump

Caution: During installation of the cover assembly, be careful not to dislodge the charge pressure relief valve from its bore.

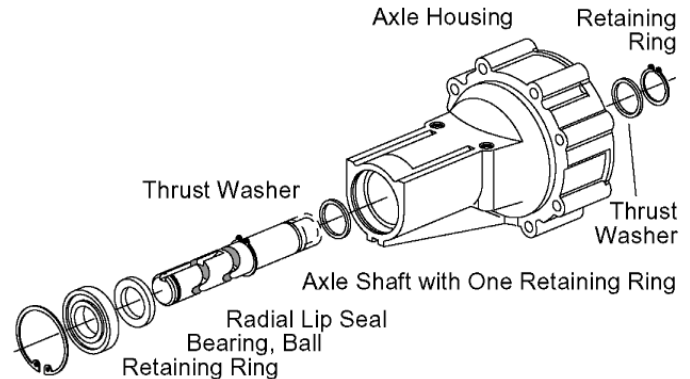
Note: Two axle housing flange screws may be used to help retain the cover, gasket and housing in position during assembly.

93 After engaging the control shaft and pivot dowel in the cover assembly, carefully rotate the input shaft to engage the pump rotor drive. When all mating parts are aligned and engaged, the cover assembly should fall into position on the housing assembly.



94 With the cover assembly in the proper position, remove the two alignment flange

screws (if used) and install the self tap screws (13), and alternately tighten to 125 lb-in [14 Nm]. Torque each screw a second time to compensate for gasket compression set.



Axle Housing Reassembly (one axle housing or two, use the same procedure for each).

95 Lubricate and install the thrust washer in the axle housing.

96 Lubricate and install the axle shaft into the axle housing.

97 Reposition the axle housing with the output end of axle pointing downward. Install the inner thrust washer and axle shaft retaining ring.

Important: The round-cornered side or die-rolled side of the retaining ring must point toward the axle housing.

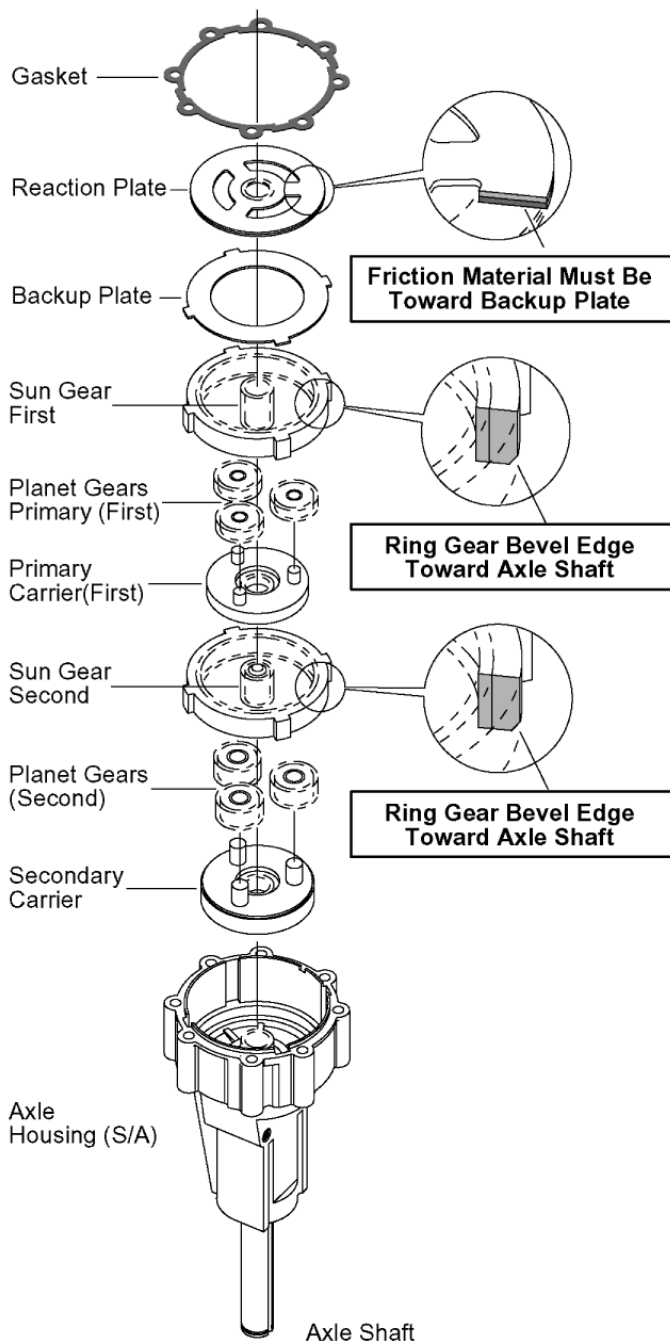
98 Reposition the axle housing with the output end pointing upward. Protecting the lip of the axle seal from the retaining ring groove and keyway, lubricate and install the seal with the lip pointing inward towards the axle housing.

99 Using a piece of pipe or hydraulic tubing (1.5 inch [38mm] O.D. x 6 inch [150mm] long), press the seal into the counterbore.

100 Again, using a piece of pipe or hydraulic tubing (1.125 inch [29mm] O.D. x 6 inch [150mm] long), press the ball bearing over the axle shaft and into the axle housing.

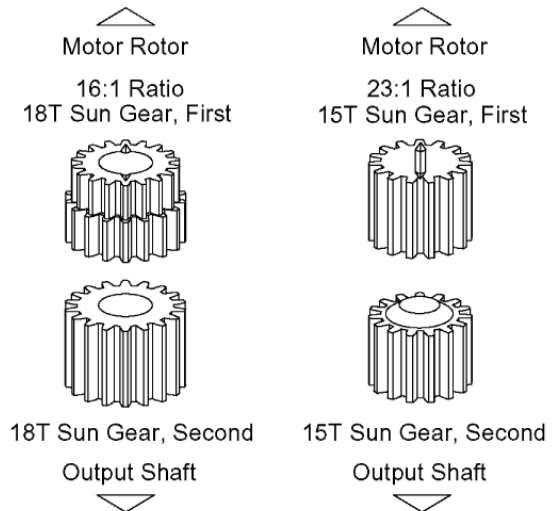
101 Using a pair of No. 5 or 7 internal retaining ring pliers, install the ball bearing retaining ring in the axle housing.

102 Lubricate and assemble the three planetary gears on the secondary carrier assembly.



- 103** Aligning the splines, install the secondary carrier assembly on the splined end of the axle shaft located in the housing assembly.
- 104** Please note that one side of each ring gear has a bevel on one side. This bevel side of the ring gear must be toward the output end of the axle shaft.
- 105** Install one of the two ring gears into the axle housing. Install by aligning the ears on the outside of the ring gear with the notches in the housing assembly.
- 106** Rotate the secondary carrier assembly planet gears to align with the ring gear teeth.

When they are all in alignment, the ring gear will fall into place.



107 Shown here are the first and second sun gears for 16:1 and 23:1 Gear ratios.

108 Install the sun gear (second) into the secondary Planetary assembly.

109 Lubricate and assemble the three planetary gears on the primary carrier assembly.

110 Aligning the splines, install the primary carrier assembly on the sun gear (second).

111 Install the next ring gear into the axle housing. Install by again aligning the ears on the outside of the ring gear with the notches in the housing assembly.

Note: Rotate the primary carrier assembly and the ring gear will fall into position.

112 Install the primary sun gear (first) into the primary planetary assembly.

113 Lubricate and install the backup plate in the axle housing assembly. Install by aligning the ears with the notches in the axle housing.

114 Aligning the splines, install the reaction plate on the primary sun gear (**friction material must be toward backup plate**).

115 Aligning the screw holes and notches, install the axle housing gasket on the axle housing assembly.

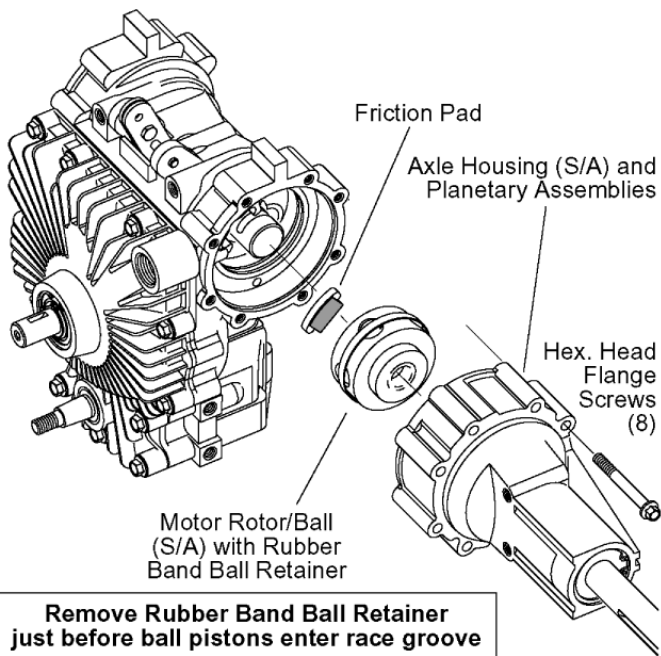
116 Reposition and clamp the housing assembly to the bench as in step 12. Install the motor rotor assembly.

117 Install the friction brake pad into its recess located in the housing assembly.

118 Carefully retain the planetary assemblies in position, install the axle housing assembly

on the housing assembly.

119 Install the axle housing flange screws and torque to 125 lb-in [14Nm].



120 Reposition the transaxle and install the gasket and (one of the following)...

...filter base.

...internal filter and valve cover (position metal side of filter toward housing and gasket).

...port plate.

121 Aligning the screw holes, install 5 flange screws.

122 Cross torque screws to 125 lb-in [14mm].

781 Series Transaxle

123 After servicing both transaxle halves, the two halves, center push rod, conical springs (2), bolts, washers and nuts (4 each) can be installed. Torque the bolt and nut to 16 ± 1.6 lb-ft [22 ± 2 Nm]. Replace E-ring retaining the conical spring at each end of center push rod.

Transaxle with Charge Pump and Spin-on Filter

124 Lubricate the filter seal, install filter, hand tight (3/4 to 1 full turn after gasket/base contact).

125 Fill transaxle with an approved hydraulic fluid (781 Series—both halves must be filled separately). The transaxle is now ready for test and installation.

Fluid Recommendations

Premium hydraulic oil having a viscosity equivalent to SAE 20w-20, SAE 30 or SAE 40.

The fluid should be chemically stable, incorporating rust and oxidation inhibitors.

A reputable supplier can help you make the best selection of hydraulic fluid for use in your Eaton transaxle.

Note: If the natural color of the fluid has become black or milky, it is possible that an overheating or water contamination problem exists.

Transaxle Parts Lists

Hydrostatic Transaxle Series 751 — No. 6-425

Hydrostatic Transaxle Series 851 — No. 6-426

Hydrostatic Transaxle Series 771-A — No. 6-427

Hydrostatic Transaxle Series 771-B — No. 6-428

Hydrostatic Transaxle Series 781 — No. 6-429

Fault-Logic Trouble Shooting

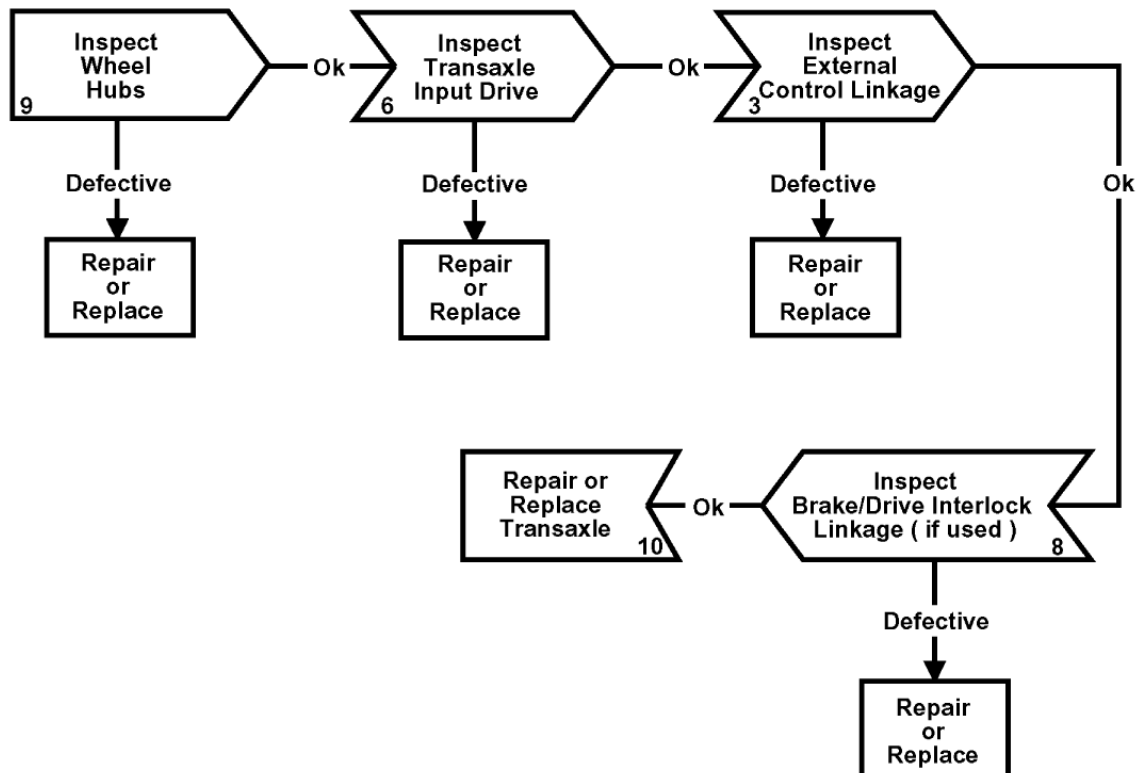
This Fault Logic Troubleshooting Guide is designed as a diagnostic aid in locating possible transaxle problems by the user.

To use this Fault-Logic Troubleshooting Guide, simply match the transaxle symptoms with the problem statements and follow the action steps shown in the box diagrams. This will give the user unnecessary machine down time.

Following the Fault-Logic diagrams are diagram action comments to further help explain the action steps shown in the diagrams.

Where applicable, the comment number of the statements appear in the action block of the diagrams.

System Jerky when Starting



Loss of Power or System (Will not operate in either direction)

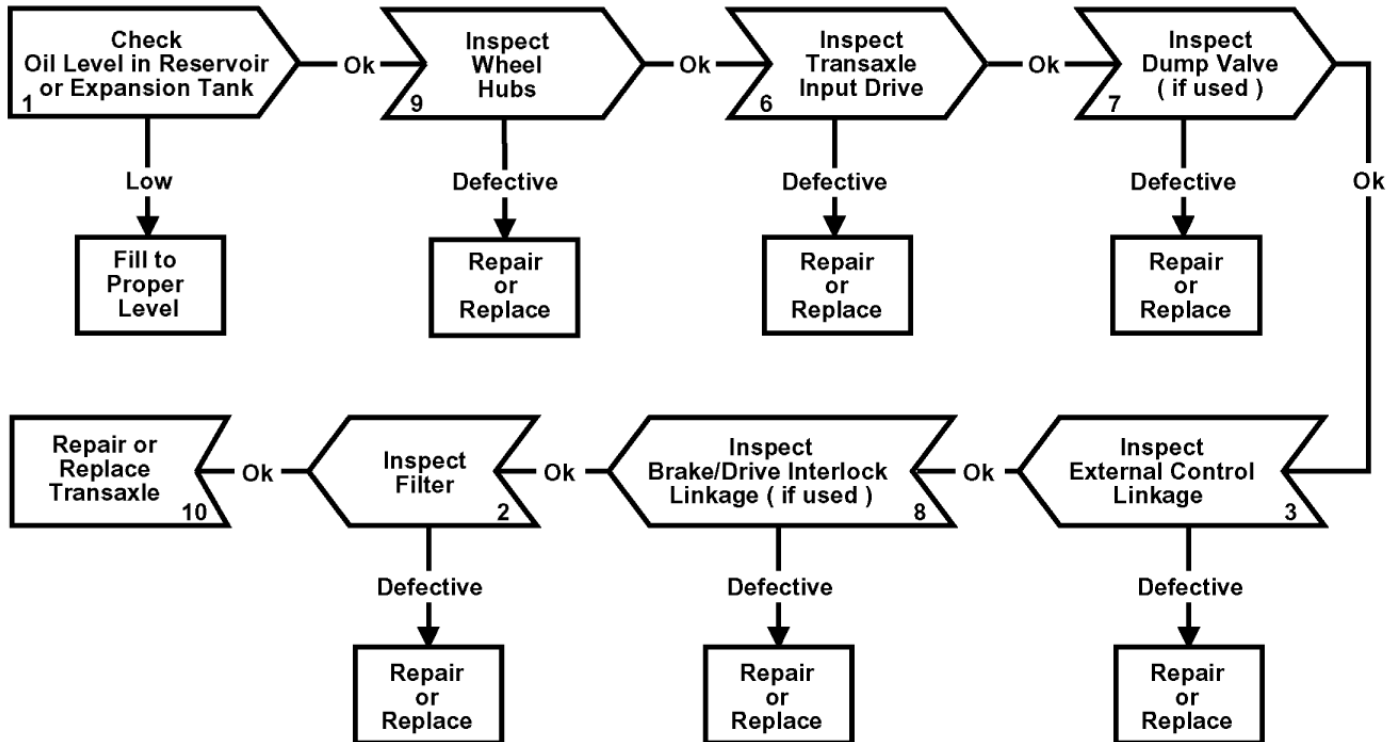


Diagram Action Step Comments

1 Check oil Level in Reservoir or Expansion Tank for:

- A Consult own/operators manual for the proper type fluid and level

2 Inspect Filter for:

- A Plugged or clogged filter element (see Transaxle Repair Information for filter location)

3 Inspect External Control Linkage for:

- A Misadjusted or disconnected
- B Worn, binding, bent or broken

4 Inspect Transaxle Cooling Fan for:

- A Sheared or missing drive screws
- B Broken or missing fan blades

5 Inspect Transaxle Cooling Fins for:

- A Plugged or clogged cover cooling fins

6 Inspect Transaxle Input Drive for:

- A Drive belt worn, loose or broken
- B Drive pulley key sheared or missing

7 Inspect Dump Valve for:

- A Misadjusted or disconnected
- B Drive pulley key sheared or missing

8 Inspect Brake/Drive Interlock Linkage for:

- A Misadjusted or disconnected
- B Worn, binding, bent or broken

9 Inspect Wheel Hubs for:

- A Drive key worn, sheared or missing

10 Repair or Replace Transaxle

- A When Transaxle is under warranty return to dealer for warranty consideration
- B All non warranty repairs should be performed by trained personnel

Hydrostatic Transaxle

Models 751, 851, 771, and 781

Eaton Corporation
Hydraulics Division
15151 Hwy. 5
Eden Prairie, MN 55344
Telephone 612/937-9800
Fax 612/937-7130

Eaton Ltd.
Hydraulics Division
Glenrothes Fife
Scotland, KY7 4NW
Telephone 01-592-771-771
Fax 01-592-773-184

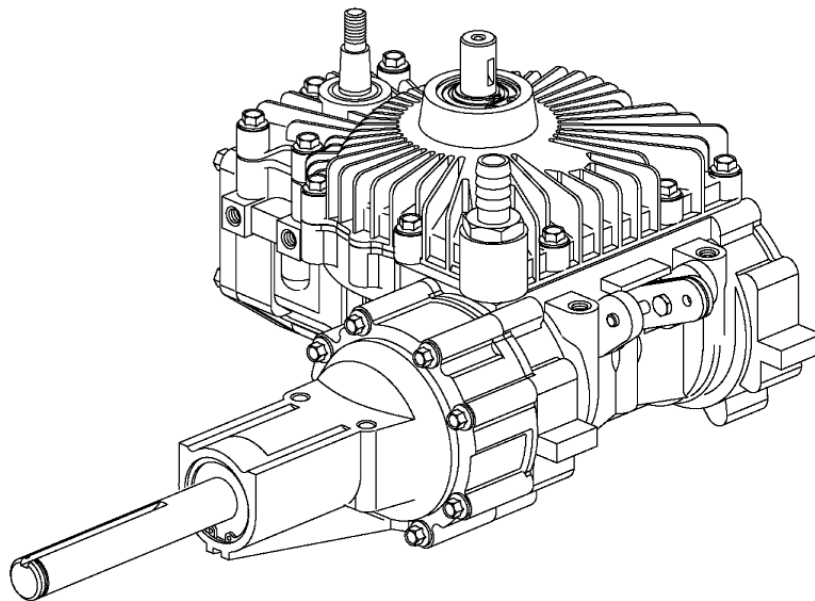
Eaton GnbH
Hydraulics Products
Am Schimmersfeld 7
40880 Ratingen, Germany
Telephone 02102-406-830
Fax 02102-406-800



Quality System Certified
Products in this catalog are manufactured
in an ISO-9001-certified site.

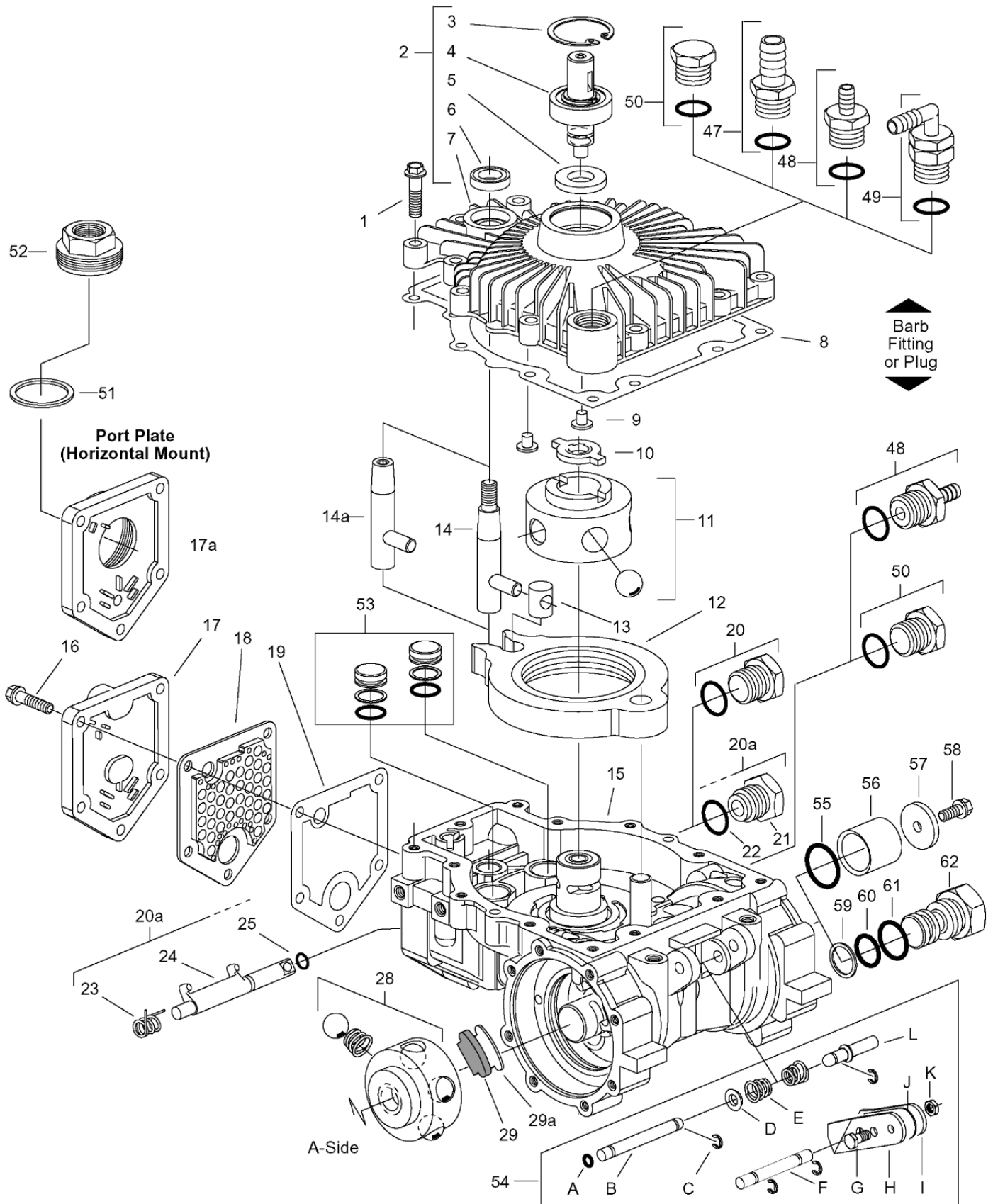


Parts Information



Transaxle Series 771 — A Side

Series 771 — A Side



Series 771 — A Side

| Ref. No. | Part Number | Description | Qty. | Ref. No. | Part Number | Description | Qty. |
|------------|-------------|----------------------------------|----------|-----------|-------------------|----------------------------------|----------|
| 1 | 104436-100 | Screw, 1/4-20 Self Tap | 13 | 37 | 106169 | 21T Plnt Gear (S/A) Second | 3 |
| 2 | 106071 | Cover (S/A) | 1 | | 106204 | 21T Plnt Gear(S/A)2nd Steel | 3 |
| 3 | 101680-156 | Ring, Retaining, Internal | 1 | 38 | 106137 | Secondary Carrier (S/A) | 1 |
| 4 | 106073 | Shaft, Input (S/A) | 1 | 39 | 106178-000 | Axle Housing (S/A) A-Side | 1 |
| 5 | 93955 | Seal, Input Shaft | 1 | | 106190** | Magnet (S/A) | 1 |
| 6 | 93895 | Seal, Control Shaft | 1 | 40 | 106162 | Housing, Axle | 1 |
| 7 | 106070 | Cover | 1 | 41 | 103983-098 | Ring, Retaining, External | 2 |
| 8 | 105327 | Gasket, Cover | 1 | 42 | 103966 | Thrust Washer | 2 |
| 9 | 101597 | Button | 2 | 43 | 101680-206 | Ring, Retaining, Internal | 1 |
| 10 | 104107 | Drive | 1 | 44 | 104928 | Bearing, Ball | 1 |
| 11 | 105228 | Pump Rotor/Ball (S/A) | 1 | 45 | 103960 | Seal, Radial Lip | 1 |
| | 104415 | Pump Rotor/Ball/Pin (S/A) | 1 | 46 | 106177-000 | Shaft, Axle — A-Side | 1 |
| 12 | 105813 | Cam Ring (S/A) | 1 | 47 | 106285 | .625 Str. Fitting/O-ring (S/A) | A/R |
| 13 | 103621 | Insert | 1 | 48 | 106631 | .375 Str. Fitting/O-ring (S/A) | A/R |
| 14 | 103611 | Control Shaft, External Thrd. | 1 | 49 | 105636 | .375 90° Fitting/O-ring (S/A) | A/R |
| 14a | 104935 | Control Shaft, Internal Thrd. | 1 | 50 | 106008 | Plug/O-ring (S/A) | A/R |
| 15 | N/A | Housing (S/A) w/parts 57-60 | 1 | | 8785-010 | O-ring for Fittings (47-50) | A/R |
| | *** | Housing (S/A) w/parts 61-63 | 1 | 51 | 8771-130 | Seal, Square Cut | 1 |
| 16 | 103757-088 | Screw, 1/4-20 Hex Flange | 5 | 52 | 101264 | Adapter, 7/8-14 O-ring Port | 1 |
| 17 | 106201 | Cover, Valve | 1 | 53 | *** | Piston, Dampening | |
| 17a | 106385 | Port Plate (Horiz. Mount) | 1 | | 104962 | Piston (S/A) | 2 |
| 18 | 106202 | Filter (Internal) | 1 | | 105814* | Piston (S/A) | 2 |
| 19 | 106200 | Gasket, V Cover/P Plate | 1 | 54 | *** | Brake Lever Parts | |
| 20 | 106008 | Plug/Seal (S/A) No Dump V | 1 | A | 106450 | Quad Seal | 1 |
| | 8785-010 | Seal, O-ring | 1 | B | 106079 | Rod, Push | 1 |
| 20a | | Dump Valve Parts | 1 | C | 106437-000 | E-Ring | 4 |
| 21 | 104664 | Nut, Dump Valve Fitting | 1 | D | 106784 | Spring Base (S/A) | 1 |
| 22 | 8785-010 | Seal, O-ring | 1 | E | 106078 | Spring, Conical | 2 |
| 23 | 104684 | Spring, Dump Valve | 1 | F | 106261 | Shaft, Brake | 1 |
| 24 | 105660 | Bracket, Dump Valve | 1 | G | 16032-406P | Screw, Cap, Hex | 1 |
| 25 | 8761-013 | Seal, O-ring | 1 | H | 106128-001 | Lever, Brake RH | 1 |
| 26 | 103757-225 | Screw 5/16 Hex Flange | 8 | I | 106128-002 | Lever, Brake LH | 1 |
| 27 | 106129 | Gasket, Axle Housing | 1 | J | 106144-XXX | Shim | A/R |
| 28 | 104551 | 15T Motor Rotor/Ball (S/A) | 1 | K | 16188-4 | Nut, Hex, Lock | 1 |
| 29 | 110185 | Pad, Friction | 1 | L | 106390 | Stop | 1 |
| 29a | 110186 | Spacer | 1 | | | | |
| 30 | 106414 | Plate, Reaction | 1 | 101 | 104167-000 | Square Key (Straight Shaft) | 1 |
| 31 | 106104 | Plate, Backup | 1 | | | | |
| 32 | 104338 | 15T Sun Gear, First | 1 | | | | |
| 33 | 106027 | Gear, Ring 57T | 2 | | | | |
| 34 | 106167 | 21T Planet Gear (S/A) First | 3 | | | | |
| 35 | 106174 | 15T Primary Carrier (S/A) | 1 | | | | |
| 36 | 104812 | 15T Sun Gear, Second | 1 | | | | |
| | 104984 | 15T Sun Gear, 2nd (Steel) | 1 | | | | |

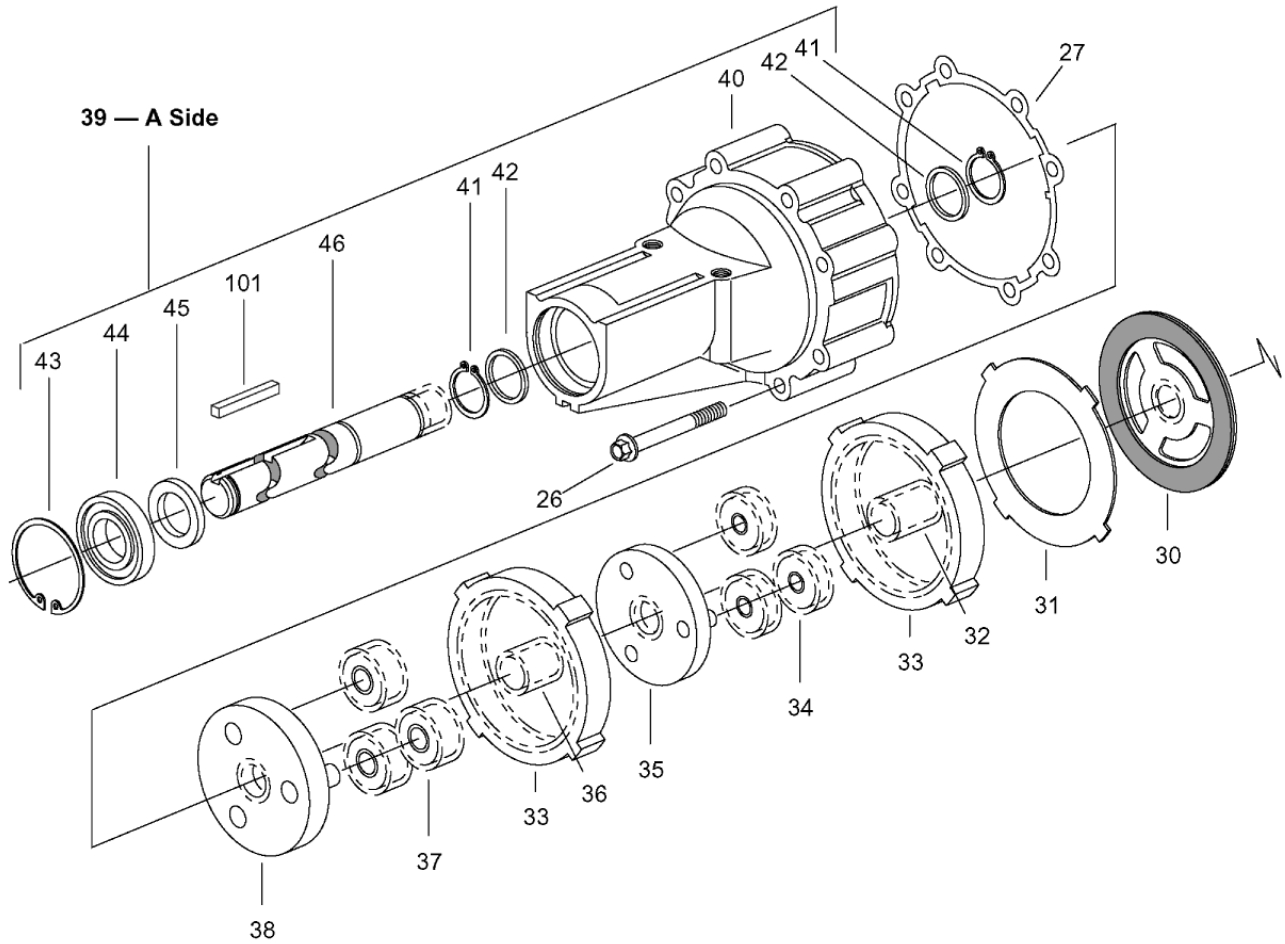
*Piston, Dampening (S/A) - Wide Band Neutral — Not Shown (has orifice hole through center).

A/R - as Required (S/A) - Sub Assy. (N/A) - Not Available

**Magnet (S/A) - Not Shown (Removal Not Recommended)

*** See Chart on Page 6 — Housing (S/A)

Series 771 — A Side



| Ref. No. | Part Number | Description | Qty. | Ref. No. | Part Number | Description | Qty. |
|------------|-------------|----------------------------------|------|-----------|-------------|----------------------------------|------|
| 1 | 104436-100 | Screw, 1/4-20 Self Tap | 13 | 37 | 106169 | 21T Plnt Gear (S/A) Second | 3 |
| 2 | 106071 | Cover (S/A) | 1 | | 106204 | 21T Plnt Gear(S/A)2nd Steel | 3 |
| 3 | 101680-156 | Ring, Retaining, Internal | 1 | 38 | 106137 | Secondary Carrier (S/A) | 1 |
| 4 | 106073 | Shaft, Input (S/A) | 1 | 39 | 106178-000 | Axle Housing (S/A) A-Side | 1 |
| 5 | 93955 | Seal, Input Shaft | 1 | | 106190** | Magnet (S/A) | 1 |
| 6 | 93895 | Seal, Control Shaft | 1 | 40 | 106162 | Housing, Axle | 1 |
| 7 | 106070 | Cover | 1 | 41 | 103983-098 | Ring, Retaining, External | 2 |
| 8 | 105327 | Gasket, Cover | 1 | 42 | 103966 | Thrust Washer | 2 |
| 9 | 101597 | Button | 2 | 43 | 101680-206 | Ring, Retaining, Internal | 1 |
| 10 | 104107 | Drive | 1 | 44 | 104928 | Bearing, Ball | 1 |
| 11 | 105228 | Pump Rotor/Ball (S/A) | 1 | 45 | 103960 | Seal, Radial Lip | 1 |
| | 104415 | Pump Rotor/Ball/Pin (S/A) | 1 | 46 | 106177-000 | Shaft, Axle — A-Side | 1 |
| 12 | 105813 | Cam Ring (S/A) | 1 | 47 | 106285 | .625 Str. Fitting/O-ring (S/A) | A/R |
| 13 | 103621 | Insert | 1 | 48 | 106631 | .375 Str. Fitting/O-ring (S/A) | A/R |
| 14 | 103611 | Control Shaft, External Thrd. | 1 | 49 | 105636 | .375 90° Fitting/O-ring (S/A) | A/R |
| 14a | 104935 | Control Shaft, Internal Thrd. | 1 | 50 | 106008 | Plug/O-ring (S/A) | A/R |
| 15 | N/A | Housing (S/A) w/parts 57-60 | 1 | | 8785-010 | O-ring for Fittings (47-50) | A/R |
| | *** | Housing (S/A) w/parts 61-63 | 1 | 51 | 8771-130 | Seal, Square Cut | 1 |
| 16 | 103757-088 | Screw, 1/4-20 Hex Flange | 5 | 52 | 101264 | Adapter, 7/8-14 O-ring Port | 1 |
| 17 | 106201 | Cover, Valve | 1 | 53 | *** | Piston, Dampening | |
| 17a | 106385 | Port Plate (Horiz. Mount) | 1 | | 104962 | Piston (S/A) | 2 |
| 18 | 106202 | Filter (Internal) | 1 | | 105814* | Piston (S/A) | 2 |
| 19 | 106200 | Gasket, V Cover/P Plate | 1 | 54 | | Brake Lever Parts | |
| 20 | 106008 | Plug/Seal (S/A) No Dump V | 1 | A | 106450 | Quad Seal | 1 |
| | 8785-010 | Seal, O-ring | 1 | B | 106079 | Rod, Push | 1 |
| 20a | | Dump Valve Parts | 1 | C | 106437-000 | E-Ring | 4 |
| 21 | 104664 | Nut, Dump Valve Fitting | 1 | D | 106784 | Spring Base (S/A) | 1 |
| 22 | 8785-010 | Seal, O-ring | 1 | E | 106078 | Spring, Conical | 2 |
| 23 | 104684 | Spring, Dump Valve | 1 | F | 106261 | Shaft, Brake | 1 |
| 24 | 105660 | Bracket, Dump Valve | 1 | G | 16032-406P | Screw, Cap, Hex | 1 |
| 25 | 8761-013 | Seal, O-ring | 1 | H | 106128-001 | Lever, Brake RH | 1 |
| 26 | 103757-225 | Screw 5/16 Hex Flange | 8 | I | 106128-002 | Lever, Brake LH | 1 |
| 27 | 106129 | Gasket, Axle Housing | 1 | J | 106144-XXX | Shim | A/R |
| 28 | 104551 | 15T Motor Rotor/Ball (S/A) | 1 | K | 16188-4 | Nut, Hex, Lock | 1 |
| 29 | 110185 | Pad, Friction | 1 | L | 106390 | Stop | 1 |
| 29a | 110186 | Spacer | 1 | | | | |
| 30 | 106414 | Plate, Reaction | 1 | 101 | 104167-000 | Square Key (Straight Shaft) | 1 |
| 31 | 106104 | Plate, Backup | 1 | | | | |
| 32 | 104338 | 15T Sun Gear, First | 1 | | | | |
| 33 | 106027 | Gear, Ring 57T | 2 | | | | |
| 34 | 106167 | 21T Planet Gear (S/A) First | 3 | | | | |
| 35 | 106174 | 15T Primary Carrier (S/A) | 1 | | | | |
| 36 | 104812 | 15T Sun Gear, Second | 1 | | | | |
| | 104984 | 15T Sun Gear, 2nd (Steel) | 1 | | | | |

*Piston, Dampening (S/A) - Wide Band Neutral — Not Shown (has orifice hole through center).

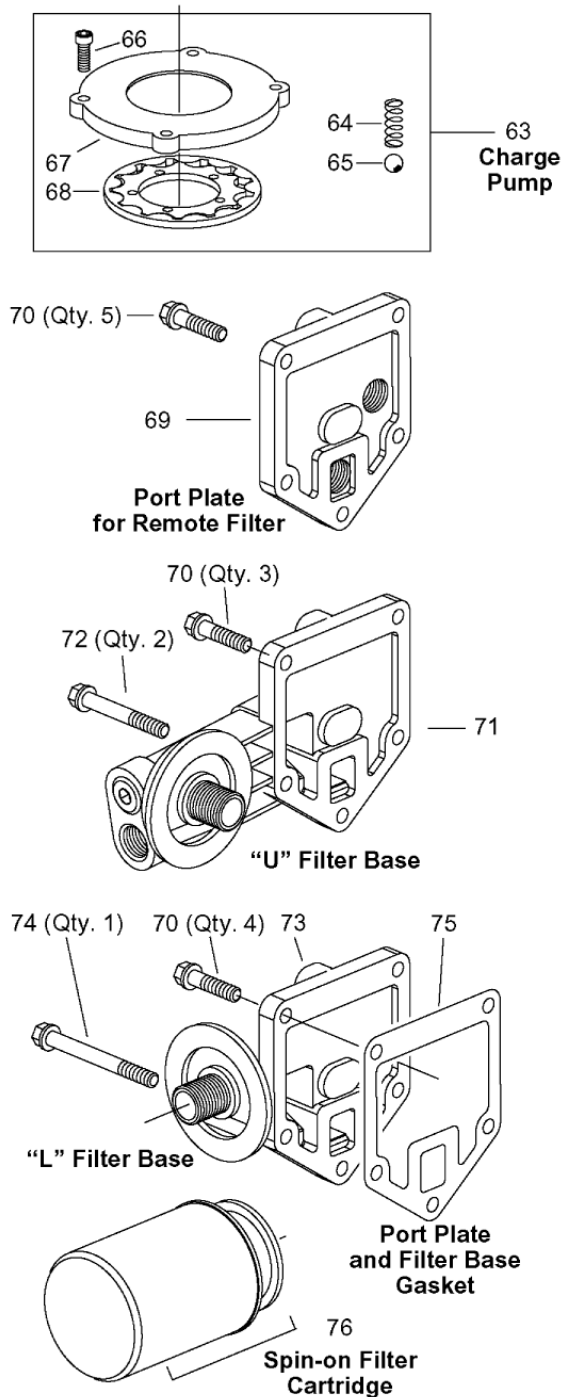
A/R - as Required (S/A) - Sub Assy. (N/A) - Not Available

**Magnet (S/A) - Not Shown (Removal Not Recommended)

*** See Chart on Page 6 — Housing (S/A)

Series 771 — A Side

Continued from page list on page 4.



| Ref. No. | Part Number | Description | Current Housings | |
|----------|-------------|--------------------|------------------|------|
| | | | First Housings | Qty. |
| 55 | 8761-121 | Seal, O-ring | 1 | |
| 56 | 104989 | Cup, Seal | 1 | |
| 57 | 104988 | Washer | 1 | |
| 58 | 103757-088 | Screw, Hex, Flange | 1 | |
| 59 | 8770-211 | Ring, Backup | | 1 |
| 60 | 8765-211 | Seal, O-ring | | 1 |
| 61 | 8785-014 | Seal, O-ring | | 1 |
| 62 | 106505 | Plug | | 1 |

| Ref. No. | Part Number | Description | Qty. |
|-----------|-------------|-----------------------------------------|------|
| 63 | *** | Charge Pump | 1 |
| 64 | 104421 | Spring | 1 |
| 65 | 195881-038 | Ball | 1 |
| 66 | 101676-088 | Screw, Cap, Socket | 4 |
| 67 | 104467 | Plate, Pump (Class II) | 1 |
| 68 | 104466 | Gerotor (Class II) | 1 |
| 67 and 68 | 104701 | Plate, Pump and Gerotor (High Pressure) | 1 |
| 69 | 104531 | Plate, Port | 1 |
| 70 | 103757-088 | Screw, 1/4-20 Hex Flange | A/R |
| 71 | 104382 | Filter Base "U" | 1 |
| | 104384 | Filter Base "U" w/Ports (2) | 1 |
| 72 | 103757-250 | Screw, 1/4 20 Hex Flange | 2 |
| 73 | 104386 | Filter Base "L" | 1 |
| 74 | 103757-375 | Screw, 1/4-20 Hex Flange | 1 |
| 75 | 104392 | Gasket | 1 |
| 76 | 103144 | Filter | 1 |

*** See Chart Below — Housing (S/A)

| Reference Number 15 Housing (other parts included in S/A are 59-62) | | | | | | | |
|---------------------------------------------------------------------|----------|------------------------------------|-------------------|-------------------------|---------------------------------|-------------------|-------------------------|
| | | No Wide Band Neutral (Ref. No. 53) | | | Wide Band Neutral (Ref. No. 53) | | |
| | | No Charge Pump | Charge Pump* (63) | High Press. Charge Pump | No Charge Pump | Charge Pump* (63) | High Press. Charge Pump |
| CW | Standard | 106971 | — | — | 106730 | — | — |
| | Special | — | 106449 | — | — | — | — |
| CCW | Standard | — | — | — | — | — | — |
| | Special | 106585 | 106227 | — | — | — | — |

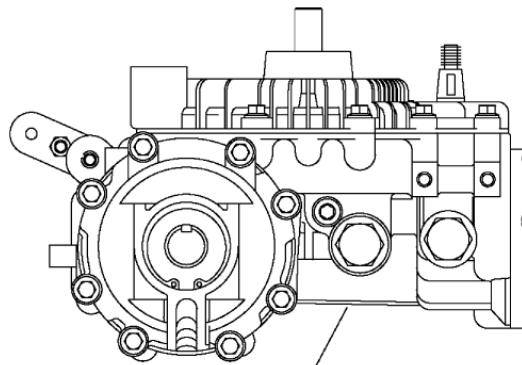
* Class II

Series 771 — A Side

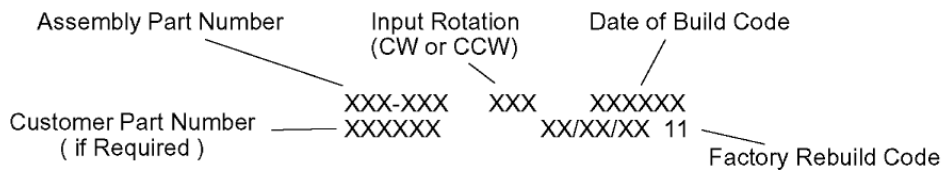
HOW TO ORDER REPLACEMENT PARTS

EACH ORDER MUST INCLUDE THE FOLLOWING:

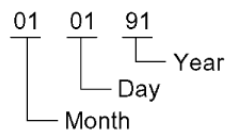
- 1. Product Number
- 2. Date Code
- 3. Part Name
- 4. Part Number
- 5. Quantity of Parts



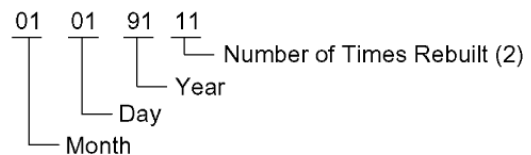
Part Number, Date of Assembly, and Input Rotation Stamped on this Surface



Original Build (example - 010191)



Factory Rebuild (example - 01/01/91 11)



Series 771 — A Side

Eaton Corporation
Hydraulics Division
15151 Hwy. 5
Eden Prairie, MN 55344
Telephone: 612/937-7254
Fax: 612/937-7130

Sumitomo Eaton
Hydraulic Company Ltd.
Ooi-Cho Kameoka-Shi
621-0017 Kyoto
Japan
Telephone: [+81] 771-22-9601
Fax: [+81] 771-29-2020

Eaton Ltd.
Hydraulics Division
Glenrothes, Fife
Scotland, KY7 4NW
Telephone: [+44] (0)1592-771-771
Fax: [+44] (0)1592-773-184

Eaton Ltd.
7th Floor, Woo Duk Building
832-2 Yeoksam-Dong, Kangnam-Ku
Soeul 135-750
Korea
Telephone: [+82] 2-557-0595
Fax: [+82] 2-557-1634

Eaton B.V.
Boeing Avenue 11
1119 PC Schiphol-Rijk
The Netherlands
Telephone: [+31] (0)20-655 6776
Fax: [+31] (0)20-655 6800

Eaton Hydraulics (Shanghai) Co. Ltd.
388 Aidu Road, Waigaogiao FTZ
Pudong New Area
Shanghai 200137
Peoples Republic of China
Telephone: [+86] 21-5046 0758
Fax: [+86] 21-5046 0767

Sumitomo Eaton Hydraulic Co.
8 Temasek Blvd.
42-01 Suntec Tower Three
Singapore 03988
Telephone: [+65] 832-7727
Fax: [+65] 832-7733

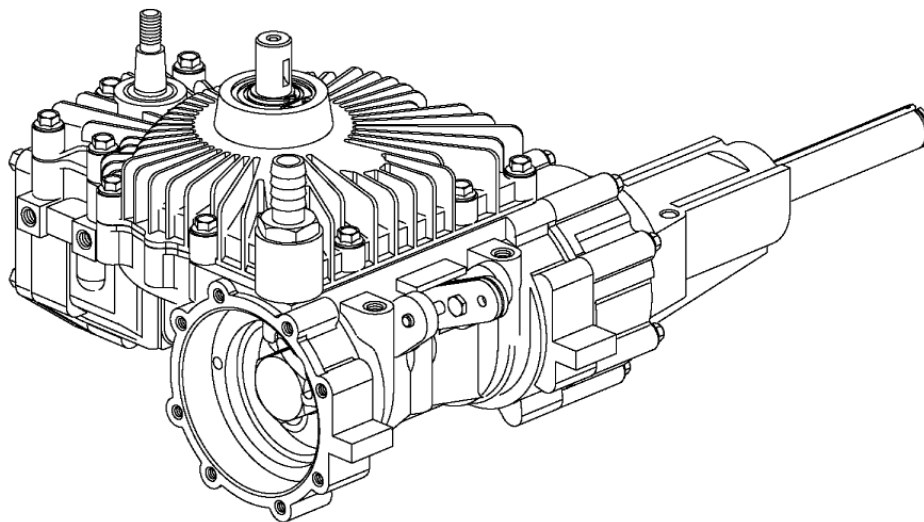
Jining Eaton Hydraulic Co. Ltd.
6 Ji Da Road
Jining City
Shandong Province 272131
Peoples Republic of China
Telephone: [+86] 537-2221288
Fax: [+86] 537-2221557



Quality System Certified
Products in this catalog are manufactured
in an ISO-9001-certified site.

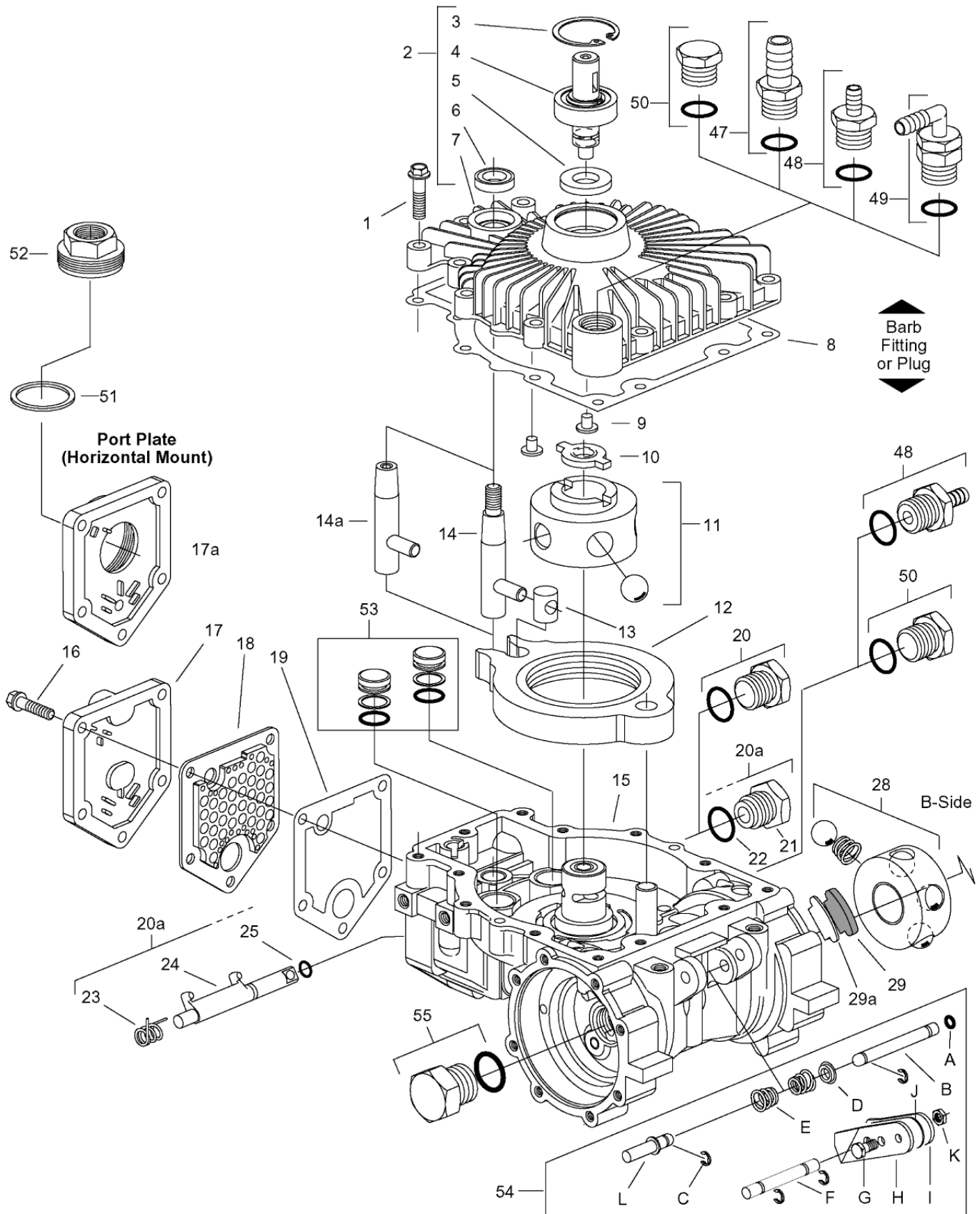


Parts Information



Transaxle Series 771 — B Side

Series 771 — B Side



Series 771 — B Side

| Ref. No. | Description | Qty. | Ref. No. | Description | Qty. |
|------------|-----------------------------------------|------|-----------|---------------------------------------------|------|
| 1 | 104436-100 Screw, 1/4-20 Self Tap | 13 | 38 | 106137 Secondary Carrier (S/A) | 1 |
| 2 | 106071 Cover (S/A) | 1 | 39 | 106178-000 Axle Housing (S/A) B-Side | 1 |
| 3 | 101680-156 Ring, Retaining, Internal | 1 | | 106190** Magnet (S/A) | 1 |
| 4 | 106073 Shaft, Input (S/A) | 1 | 40 | 106162 Housing, Axle | 1 |
| 5 | 93955 Seal, Input Shaft | 1 | 41 | 103983-098 Ring, Retaining, External | 2 |
| 6 | 93895 Seal, Control Shaft | 1 | 42 | 103966 Thrust Washer | 2 |
| 7 | 106070 Cover | 1 | 43 | 101680-206 Ring, Retaining, Internal | 1 |
| 8 | 105327 Gasket, Cover | 1 | 44 | 104928 Bearing, Ball | 1 |
| 9 | 101597 Button | 2 | 45 | 103960 Seal, Radial Lip | 1 |
| 10 | 104107 Drive | 1 | 46 | 106177-000 Shaft, Axle — B-Side | 1 |
| 11 | 105228 Pump Rotor/Ball (S/A) | 1 | 47 | 106285 .625 Str. Fitting/O-ring (S/A) | A/R |
| | 104415 Pump Rotor/Ball/Pin (S/A) | 1 | 48 | 106631 .375 Str. Fitting/O-ring (S/A) | A/R |
| 12 | 105813 Cam Ring (S/A) | 1 | 49 | 105636 .375 90° Fitting/O-ring (S/A) | A/R |
| 13 | 103621 Insert | 1 | 50 | 106008 Plug/O-ring (S/A) | A/R |
| 14 | 103611 Control Shaft, External Thrd. | 1 | | 8785-010 O-ring for Fittings (47-50) | A/R |
| 14a | 104935 Control Shaft, Internal Thrd. | 1 | 51 | 8771-130 Seal, Square Cut | 1 |
| 15 | *** Housing (S/A) | 1 | 52 | 101264 Adapter, 7/8-14 O-ring Port | 1 |
| 16 | 103757-088 Screw, 1/4-20 Hex Flange | 5 | 53 | *** Piston, Dampening | |
| 17 | 106201 Cover, Valve | 1 | | 104962 Piston (S/A) | 2 |
| 17a | 106385 Port Plate (Horiz. Mount) | 1 | | 105814* Piston (S/A) | 2 |
| 18 | 106202 Filter (Internal) | 1 | 54 | Brake Lever Parts | |
| 19 | 106200 Gasket, V Cover/ P Plate | 1 | A | 106450 Quad Seal | 1 |
| 20 | 106008 Plug/Seal (S/A) No Dump V | 1 | B | 106079 Rod, Push | 1 |
| | 8785-010 Seal, O-ring | 1 | C | 106437-000 E-Ring | 4 |
| 20a | Dump Valve Parts | 1 | D | 106119 Spring Base (S/A) | 1 |
| 21 | 104664 Nut, Dump Valve Fitting | 1 | E | 106078 Spring, Conical | 2 |
| 22 | 8785-010 Seal, O-ring | 1 | F | 106261 Shaft, Brake | 1 |
| 23 | 104684 Spring, Dump Valve | 1 | G | 16032-406P Screw, Cap, Hex | 1 |
| 24 | 105660 Bracket, Dump Valve | 1 | H | 106128-001 Lever, Brake RH | 1 |
| 25 | 8761-013 Seal, O-ring | 1 | I | 106128-002 Lever, Brake LH | 1 |
| 26 | 103757-225 Screw 5/16 Hex Flange | 8 | J | 106144-XXX Shim | A/R |
| 27 | 106129 Gasket, Axle Housing | 1 | K | 16188-4 Nut, Hex, Lock | 1 |
| 28 | 104551 15T Motor Rotor/Ball (S/A) | 1 | L | 106390 Stop | 1 |
| 29 | 110185 Pad, Friction | 1 | 55 | 25090-014 Plug/O-ring (S/A) | 1 |
| 29a | 110186 Spacer | 1 | | 8785-014 O-ring | 1 |
| 30 | 106414 Plate, Reaction | 1 | | | |
| 31 | 106104 Plate, Backup | 1 | 101 | 104167 Square Key (Straight Shaft) | 1 |
| 32 | 104338 15T Sun Gear, First | 1 | | | |
| 33 | 106027 Gear, Ring 57T | 2 | | | |
| 34 | 106167 21T Planet Gear (S/A) First | 3 | | | |
| 35 | 106174 15T Primary Carrier (S/A) | 1 | | | |
| 36 | 104812 15T Sun Gear, Second | 1 | | | |
| | 104984 15T Sun Gear, 2nd (Steel) | 1 | | | |
| 37 | 106169 21T Plnt Gear (S/A) Second | 3 | | | |
| | 106204 21T Plnt Gear(S/A)2nd Steel | 3 | | | |

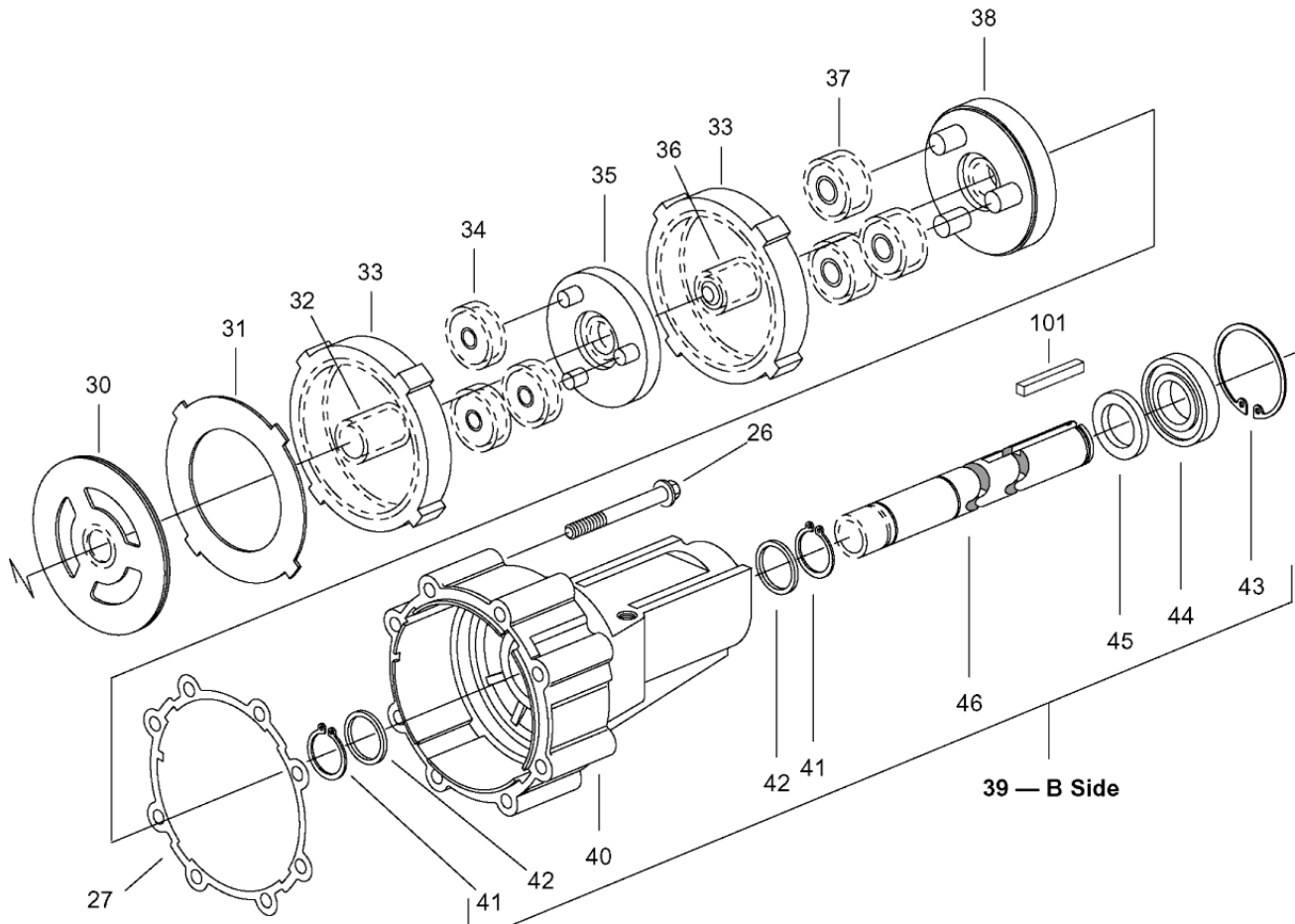
*Piston, Dampening (S/A) - Wide Band Neutral — Not Shown (has orifice hole through center).

A/R - as Required (S/A) - Sub Assembly

**Magnet (S/A) - Not Shown (Removal Not Recommended)

*** See Chart on Page 6 — Housing (S/A)

Series 771 — B Side



| Ref. No. | Description | Qty. |
|------------|-----------------------------------------|------|
| 1 | 104436-100 Screw, 1/4-20 Self Tap | 13 |
| 2 | 106071 Cover (S/A) | 1 |
| 3 | 101680-156 Ring, Retaining, Internal | 1 |
| 4 | 106073 Shaft, Input (S/A) | 1 |
| 5 | 93955 Seal, Input Shaft | 1 |
| 6 | 93895 Seal, Control Shaft | 1 |
| 7 | 106070 Cover | 1 |
| 8 | 105327 Gasket, Cover | 1 |
| 9 | 101597 Button | 2 |
| 10 | 104107 Drive | 1 |
| 11 | 105228 Pump Rotor/Ball (S/A) | 1 |
| | 104415 Pump Rotor/Ball/Pin (S/A) | 1 |
| 12 | 105813 Cam Ring (S/A) | 1 |
| 13 | 103621 Insert | 1 |
| 14 | 103611 Control Shaft, External Thrd. | 1 |
| 14a | 104935 Control Shaft, Internal Thrd. | 1 |
| 15 | *** Housing (S/A) | 1 |
| 16 | 103757-088 Screw, 1/4-20 Hex Flange | 5 |
| 17 | 106201 Cover, Valve | 1 |
| 17a | 106385 Port Plate (Horiz. Mount) | 1 |
| 18 | 106202 Filter (Internal) | 1 |
| 19 | 106200 Gasket, V Cover/ P Plate | 1 |
| 20 | 106008 Plug/Seal (S/A) No Dump V | 1 |
| | 8785-010 Seal, O-ring | 1 |
| 20a | Dump Valve Parts | 1 |
| 21 | 104664 Nut, Dump Valve Fitting | 1 |
| 22 | 8785-010 Seal, O-ring | 1 |
| 23 | 104684 Spring, Dump Valve | 1 |
| 24 | 105660 Bracket, Dump Valve | 1 |
| 25 | 8761-013 Seal, O-ring | 1 |
| 26 | 103757-225 Screw 5/16 Hex Flange | 8 |
| 27 | 106129 Gasket, Axle Housing | 1 |
| 28 | 104551 15T Motor Rotor/Ball (S/A) | 1 |
| 29 | 110185 Pad, Friction | 1 |
| 29a | 110186 Spacer | 1 |
| 30 | 106414 Plate, Reaction | 1 |
| 31 | 106104 Plate, Backup | 1 |
| 32 | 104338 15T Sun Gear, First | 1 |
| 33 | 106027 Gear, Ring 57T | 2 |
| 34 | 106167 21T Planet Gear (S/A) First | 3 |
| 35 | 106174 15T Primary Carrier (S/A) | 1 |
| 36 | 104812 15T Sun Gear, Second | 1 |
| | 104984 15T Sun Gear, 2nd (Steel) | 1 |
| 37 | 106169 21T Plnt Gear (S/A) Second | 3 |
| | 106204 21T Plnt Gear(S/A)2nd Steel | 3 |

| Ref. No. | Description | Qty. |
|-----------|---------------------------------------------|----------|
| 38 | 106137 Secondary Carrier (S/A) | 1 |
| 39 | 106178-000 Axle Housing (S/A) B-Side | 1 |
| | 106190** Magnet (S/A) | 1 |
| 40 | 106162 Housing, Axle | 1 |
| 41 | 103983-098 Ring, Retaining, External | 2 |
| 42 | 103966 Thrust Washer | 2 |
| 43 | 101680-206 Ring, Retaining, Internal | 1 |
| 44 | 104928 Bearing, Ball | 1 |
| 45 | 103960 Seal, Radial Lip | 1 |
| 46 | 106177-000 Shaft, Axle — B-Side | 1 |
| 47 | 106285 .625 Str. Fitting/O-ring (S/A) | A/R |
| 48 | 106631 .375 Str. Fitting/O-ring (S/A) | A/R |
| 49 | 105636 .375 90° Fitting/O-ring (S/A) | A/R |
| 50 | 106008 Plug/O-ring (S/A) | A/R |
| | 8785-010 O-ring for Fittings (47-50) | A/R |
| 51 | 8771-130 Seal, Square Cut | 1 |
| 52 | 101264 Adapter, 7/8-14 O-ring Port | 1 |
| 53 | *** Piston, Dampening | |
| | 104962 Piston (S/A) | 2 |
| | 105814* Piston (S/A) | 2 |
| 54 | Brake Lever Parts | |
| A | 106450 Quad Seal | 1 |
| B | 106079 Rod, Push | 1 |
| C | 106437-000 E-Ring | 4 |
| D | 106119 Spring Base (S/A) | 1 |
| E | 106078 Spring, Conical | 2 |
| F | 106261 Shaft, Brake | 1 |
| G | 16032-406P Screw, Cap, Hex | 1 |
| H | 106128-001 Lever, Brake RH | 1 |
| I | 106128-002 Lever, Brake LH | 1 |
| J | 106144-XXX Shim | A/R |
| K | 16188-4 Nut, Hex, Lock | 1 |
| L | 106390 Stop | 1 |
| 55 | 25090-014 Plug/O-ring (S/A) | 1 |
| | 8785-014 O-ring | 1 |
| 101 | 104167 Square Key (Straight Shaft) | 1 |

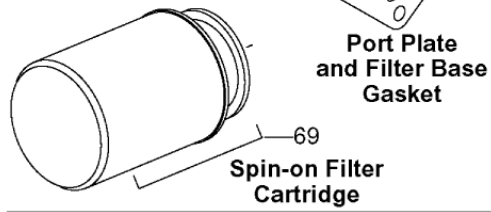
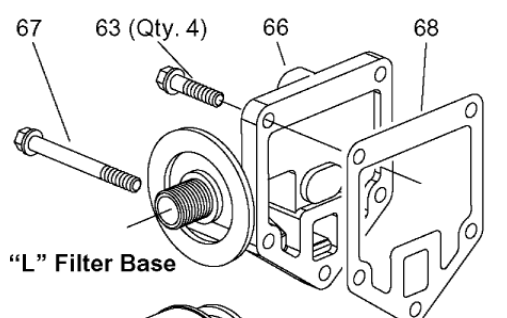
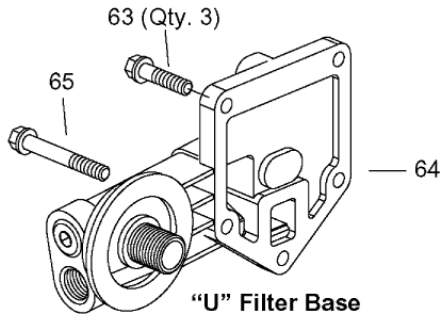
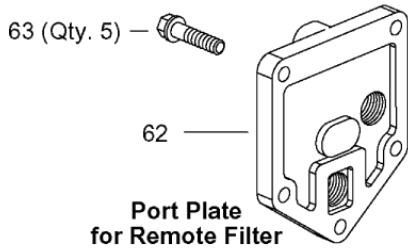
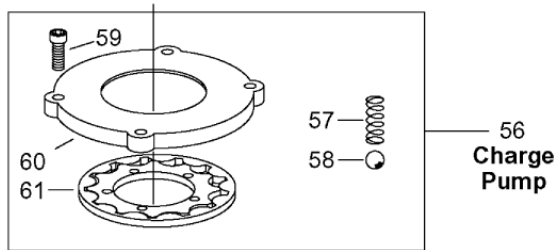
*Piston, Dampening (S/A) - Wide Band Neutral — Not Shown (has orifice hole through center).

A/R - as Required (S/A) - Sub Assembly

**Magnet (S/A) - Not Shown (Removal Not Recommended)

*** See Chart on Page 6 — Housing (S/A)

Series 771 — B Side



| Ref. No. | Part Number | Description | Qty. |
|-----------|-------------|-----------------------------------------|------|
| 56 | *** | Charge Pump | 1 |
| 57 | 104421 | Spring | 1 |
| 58 | 95881-038 | Ball | 1 |
| 59 | 101676-088 | Screw, Cap, Socket | 4 |
| 60 | 104467 | Plate, Pump (Class II) | 1 |
| 61 | 104466 | Gerotor (Class II) | 1 |
| 60 and 61 | 104701 | Plate, Pump and Gerotor (High Pressure) | 1 |
| 62 | 104531 | Plate, Port | 1 |
| 63 | 103757-088 | Screw, 1/4-20 Hex Flange | A/R |
| 64 | 104382 | Filter Base "U" | 1 |
| | 104384 | Filter Base "U" w/Ports (2) | 1 |
| 65 | 103757-250 | Screw, 1/4 20 Hex Flange | 2 |
| 66 | 104386 | Filter Base "L" | 1 |
| 67 | 103757-375 | Screw, 1/4-20 Hex Flange | 1 |
| 68 | 104392 | Gasket | 1 |
| 69 | 103144 | Filter | 1 |

*** See Chat Below — Housing (S/A)

| Reference Number 15 Housing (other parts included in S/A — Ref. No. 55) | | | | | | | |
|-------------------------------------------------------------------------|----------|---------------------------|-------------------|-------------------------|------------------------|-------------------|-------------------------|
| | | No Wide Band Neutral (53) | | | Wide Band Neutral (53) | | |
| | | No Charge Pump | Charge Pump* (56) | High Press. Charge Pump | No Charge Pump | Charge Pump* (56) | High Press. Charge Pump |
| CW | Standard | 106972 | — | — | 106731 | — | — |
| | Special | — | 106460 | — | — | — | — |
| CCW | Standard | — | — | — | — | — | — |
| | Special | 106586 | 106228 | — | — | — | — |

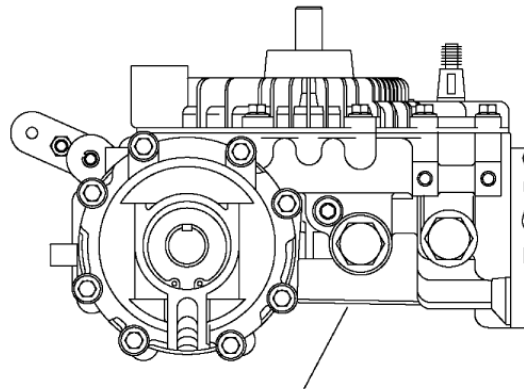
* Class II

Series 771 — B Side

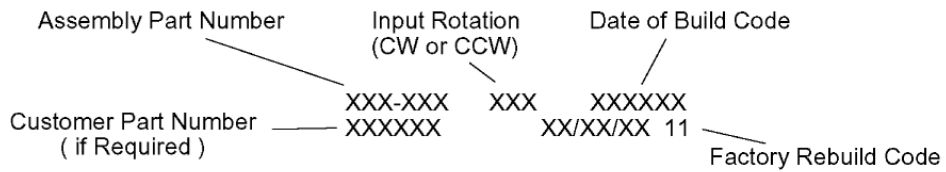
HOW TO ORDER REPLACEMENT PARTS

EACH ORDER MUST INCLUDE THE FOLLOWING:

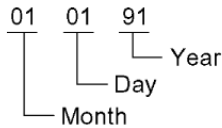
- 1. Product Number
- 2. Date Code
- 3. Part Name
- 4. Part Number
- 5. Quantity of Parts



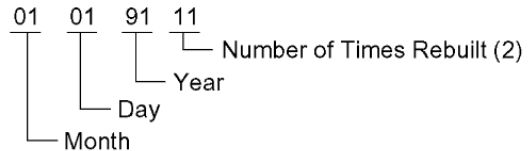
Part Number, Date of Assembly, and Input Rotation Stamped on this Surface



Original Build (example - 010191)



Factory Rebuild (example - 01/01/91 11)



Series 771 — B Side

Eaton Corporation
Hydraulics Division
15151 Hwy. 5
Eden Prairie, MN 55344
Telephone: 612/937-7254
Fax: 612/937-7130

Sumitomo Eaton
Hydraulic Company Ltd.
Ooi-Cho Kameoka-Shi
621-0017 Kyoto
Japan
Telephone: [+81] 771-22-9601
Fax: [+81] 771-29-2020

Eaton Ltd.
Hydraulics Division
Glenrothes, Fife
Scotland, KY7 4NW
Telephone: [+44] (0)1592-771-771
Fax: [+44] (0)1592-773-184

Eaton Ltd.
7th Floor, Woo Duk Building
832-2 Yeoksam-Dong, Kangnam-Ku
Soeul 135-750
Korea
Telephone: [+82] 2-557-0595
Fax: [+82] 2-557-1634

Eaton B.V.
Boeing Avenue 11
1119 PC Schiphol-Rijk
The Netherlands
Telephone: [+31] (0)20-655 6776
Fax: [+31] (0)20-655 6800

Eaton Hydraulics (Shanghai) Co. Ltd.
388 Aidu Road, Waigaogiao FTZ
Pudong New Area
Shanghai 200137
Peoples Republic of China
Telephone: [+86] 21-5046 0758
Fax: [+86] 21-5046 0767

Sumitomo Eaton Hydraulic Co.
8 Temasek Blvd.
42-01 Suntec Tower Three
Singapore 03988
Telephone: [+65] 832-7727
Fax: [+65] 832-7733

Jining Eaton Hydraulic Co. Ltd.
6 Ji Da Road
Jining City
Shandong Province 272131
Peoples Republic of China
Telephone: [+86] 537-2221288
Fax: [+86] 537-2221557



Quality System Certified
Products in this catalog are manufactured
in an ISO-9001-certified site.

Notes:

Notes:

