



592087 INSTALLATION INSTRUCTIONS FOR PROWLER MID-CUT FOOT LIFT KIT



Before starting, lay out all the components of the kit and compare items to the following parts list:

#	QTY	PART #	PART NAME
1	1	592074	PEDAL MOUNT WELDMENT
2	1	592078	REAR LIFT MOUNT
3	1	592080	FRONT HEIGHT MOUNT
4	1	592085	FOOT PEDAL w/BUSHING
5	2	593166	FOOT LIFT SPRING
6	1	594043	HEIGHT BRACKET ASSY.
7	1	NA	BOLT BAG – FOOT LIFT

QTY	PART #	PART NAME	QTY	PART #	PART NAME
2	100030	3/8 – 16 x 3 HHTB	2	363145	1" CLAMP COLLAR
2	100275	5/16 – 18 x 1 1/2 HHCS	1	523138	3/4 CLAMP COLLAR
1	100292	3/8 – 16 x 1.0 HHCS	1	592090	CUP RETAINER RIGHT
1	100299	3/8 – 16 x 2 3/4 HHCS	1	592092	CUP RETAINER LEFT
1	100303	3/8 – 16 x 4.0 HHCS	1	593150	LIFT ARM PIVOT BUSHING
10	104256	5/16 – 18 HEX NYLOCK NUT	1	593161	WAVEY WASHER – 3/4
2	104257	3/8 – 16 HEX NYLOCK NUT	2	593165	1/2 " CLEVIS PIN
1	105006	3/8 LOCK WASHER	2	593176	LIFT SPRING CUP
2	106763	1/8 x 1 1/4 COTTER PIN	1	594045	LIFT LINK ASY.
4	107509	5/16 – 18 x 1 CARRIAGE HEAD BOLT	1	923001	10 x 8 x 4 mil PLASTIC BAG
2	109007	3/8 – 16 WHIZLOCK NUT	1	933174	INSTALLATION INSTRUCTIONS

1. CHANGING OUT THE CASTER ROD SPRINGS

- A. Begin by replacing the existing caster rod springs (Fig. 1) with the foot lift springs (593166) included in the kit.
- B. Disconnect the caster rod assembly from the rear deck tube.
- C. Unscrew rod end from caster rod assembly.
- D. Remove existing washer, caster rod spring, and bushing w/ zerk from caster rod assembly.
- E. Detach spring stop from deck by completely unscrewing 3" threaded hex bolt from deck tab.
- F. Remove spring stop from caster rod and turn it around (front to back) and slide it back onto the caster rod (refer to Fig. 1A).
- G. Fasten the 3" threaded hex bolt to the spring stop and only thread onto spring stop a few threads.
- H. Install the cup retainer (found in bolt bag) next to the spring stop as shown in Fig. 1A. Note: there is a left-hand and right hand cup retainer. Make certain to use each retainer on the proper side of the deck.
- I. Install lift spring cup (found in bolt bag) followed by foot lift spring onto caster rod.

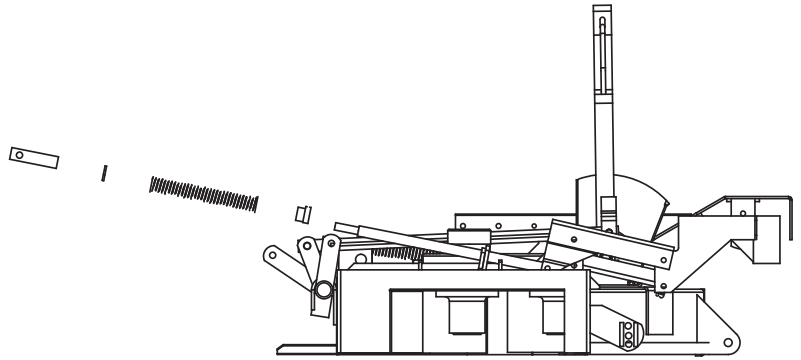


FIG 1

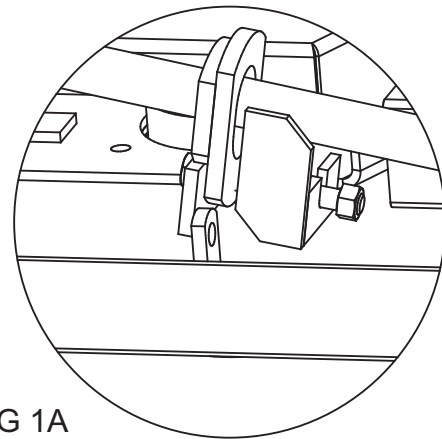


FIG 1A

52" CASTER ROD ASSEMBLY

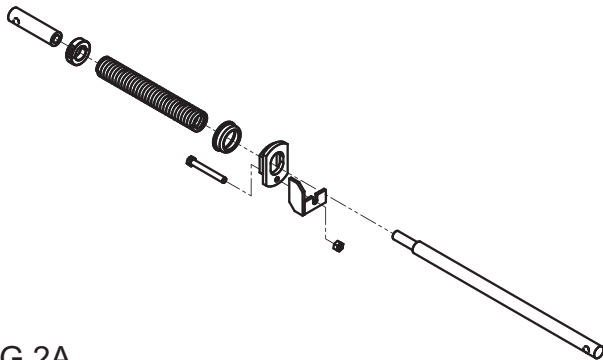


FIG 2A

61" CASTER ROD ASSEMBLY

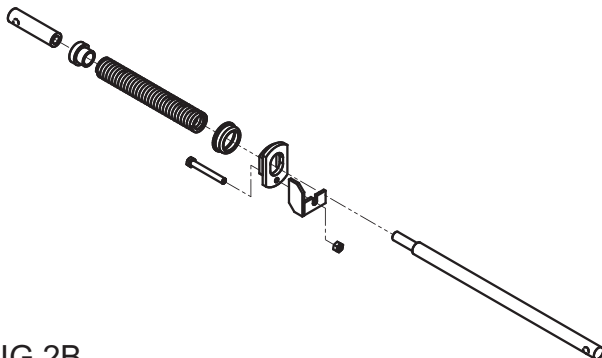


FIG 2B

- J. For 52" deck, slide 1" clamp collar found in bolt bag onto caster rod. Tighten clamp collar down on the very end of caster rod. If more spring tension is needed after complete installation of foot lift kit, the location of the 1" clamp collar may be adjusted accordingly to create more spring tension on caster rod assembly. Refer to Fig. 2A for complete stack up of caster rod assembly. For 61" deck, slide bushing w/ zerk onto caster rod with the narrow end sliding into the foot lift spring. The grease zerk may be removed from the bushing. Fig. 2B shows the complete stack up of the caster rod assembly.
- K. Re-attach rod end to the caster rod assembly. Thread rod end onto caster rod assembly only a few threads.
- L. Tighten 3" threaded hex bolt that fastens spring stop to the deck. Use 3/8" whizlock nut on end of 3" threaded hex bolt to secure the cup retainer to the spring stop as shown in Fig. 1A.
- M. Thread rod end onto caster rod assembly the rest of the way. The overall length of the caster rod assembly should be 20" measured from the center point of each hole located at each end of the caster rod assembly.
- N. Re-attach the caster rod assembly to the rear deck tube.

2. INSTALLATION OF FOOT PEDAL LIFT COMPONENTS

- A. Remove existing height adjustment components as shown in Fig. 3. The nyloc nuts and carriage bolts will be re-used in the following step.

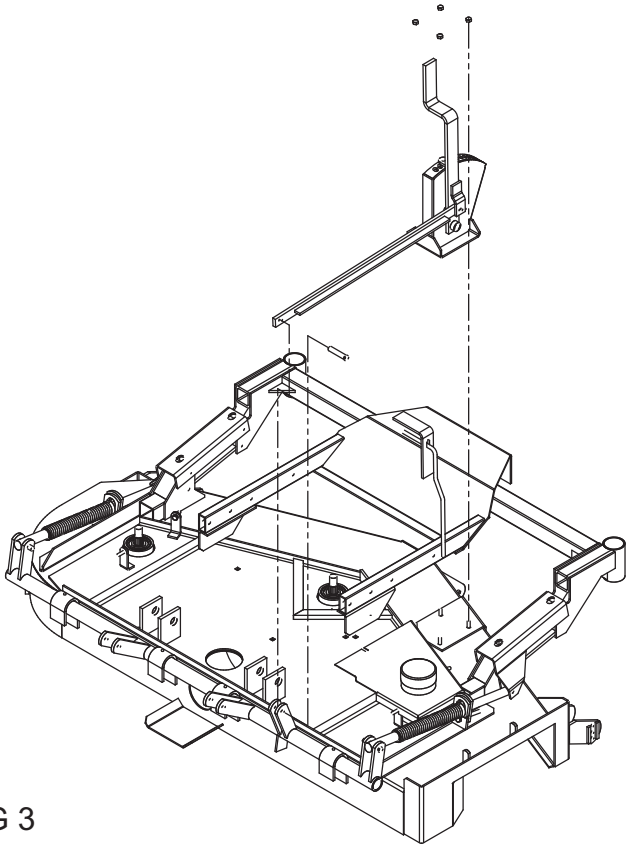


FIG 3

- B. Using the fasteners from the previous step, mount the front height mount (592080) onto the deck using the existing holes that the height adjustment bracket was removed from (refer to Fig. 4).

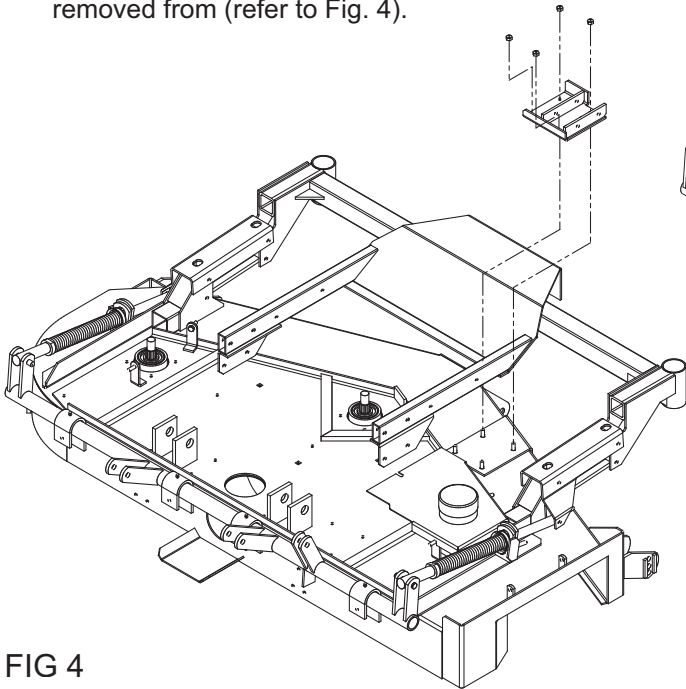


FIG 4

Note: at this point, it may be necessary to remove the fuel tank and fuel tank bracket so as to be able to access the holes to be drilled.

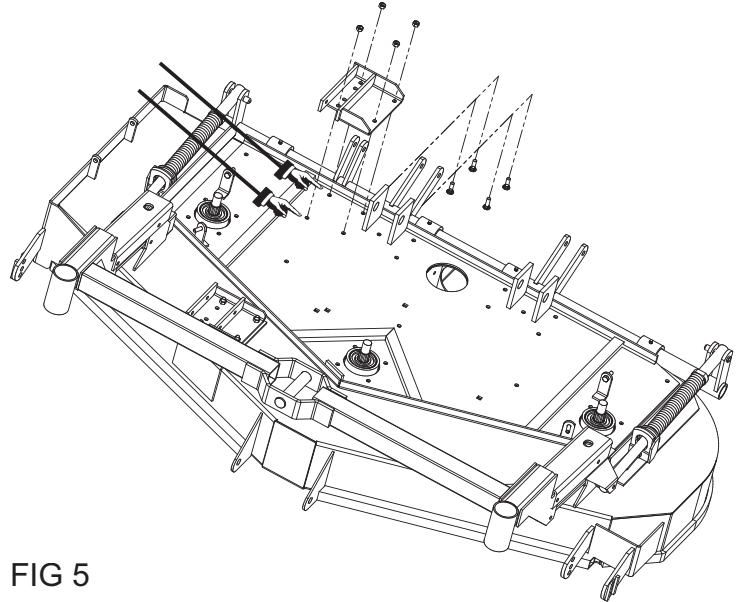


FIG 5

- C. Mount the rear lift mount (592078) to the back of the deck as shown in Fig. 5. Two holes already exist in the deck. Two more holes will have to be drilled using the existing holes in the sub-plate as a guide as shown in Fig. 5.

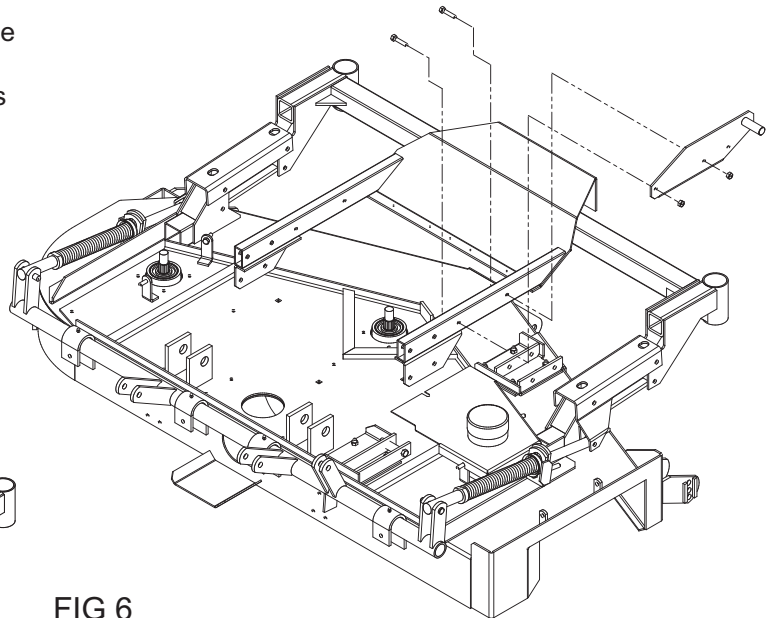


FIG 6

- D. Fasten the pedal mount weldment (592074) to the frame rail as shown in Fig. 6.

Note: close the footplate prior to installing the foot pedal w/ bushing.

- E. Slide the foot pedal w/ bushing (592085) onto the pedal mount weldment.
- F. The foot pedal will be retained onto the pedal mount using the 3/4" wavy washer and 3/4" clamp collar found in the bolt bag as shown in Fig. 7.
- G. Attach the height bracket assembly (594043) to the rear lift mount using the lift arm pivot bushing, 3/8 x 2-3/4" hex bolt, and 3/8 nyloc nut found in the bolt bag (refer to Fig. 8).

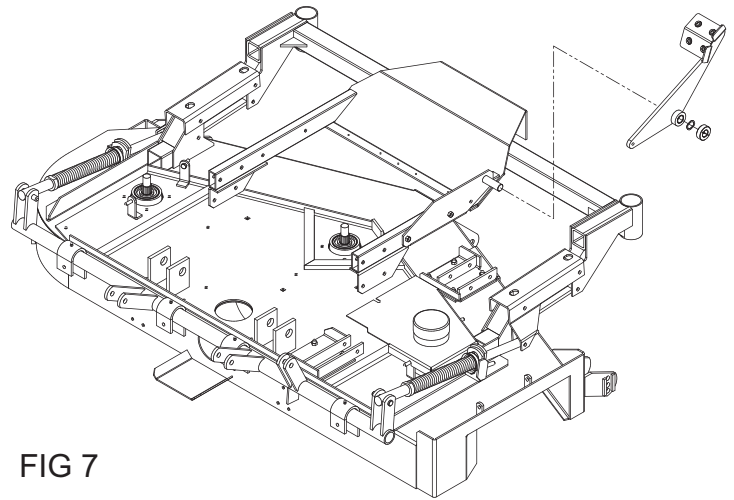


FIG 7

- H. Attach the height bracket assembly (594043) to the front lift mount using the 3/8 x 4" hex bolt and 3/8 nyloc nut from the bolt bag.
Note: use the front set of holes in the front lift mount for a 52" deck and use the rear set of holes in the front lift mount for a 61" deck.

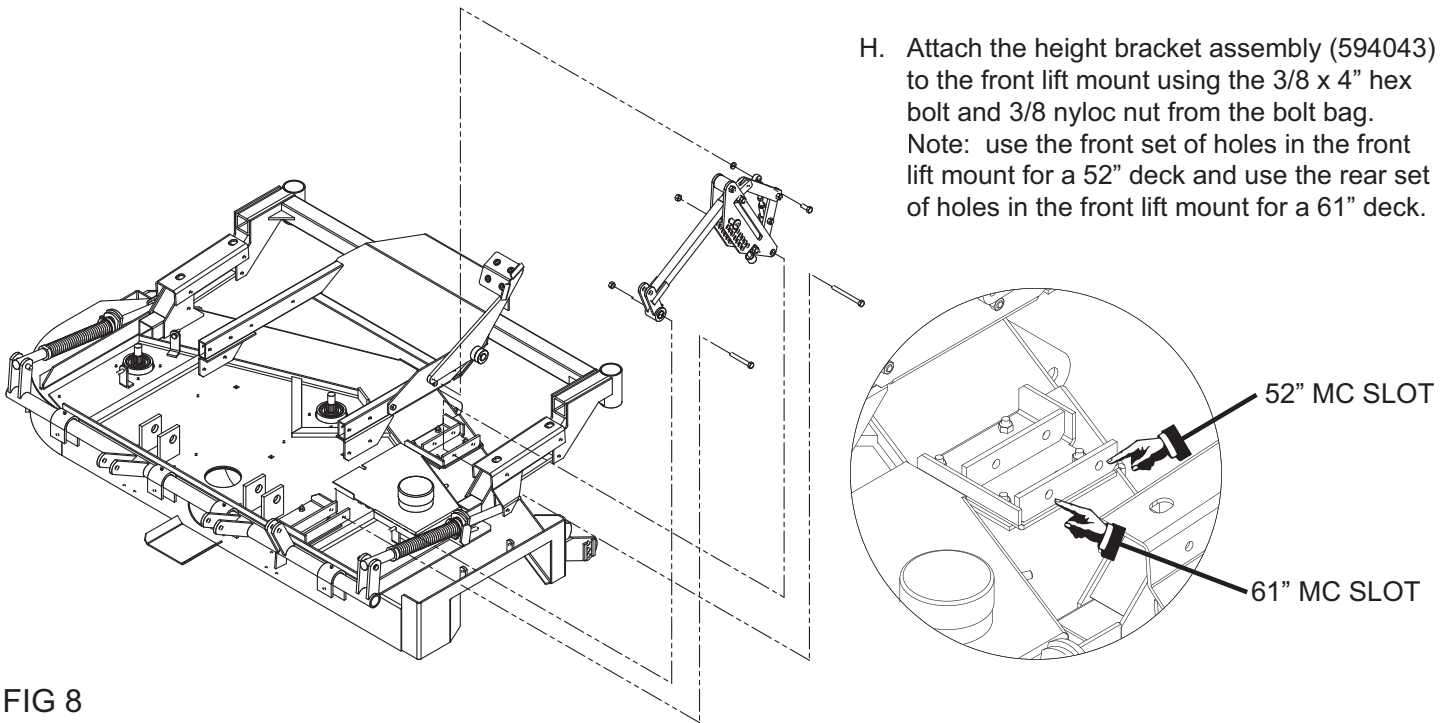


FIG 8

- I. Attach the height bracket assembly (594043) to the foot pedal using the 3/8 x 1" hex bolt and 3/8 lock washer. The 3/8 lock washer is to be assembled between the link assembly and the foot pedal as shown in Fig. 8.
- J. The lift link assembly (594045) found in the bolt bag connects the height bracket assembly to the rear deck tube using the two 1/2" clevis pins and 1/8 x 1-1/4" cotter pins located in the bolt bag. Refer to Fig. 9.

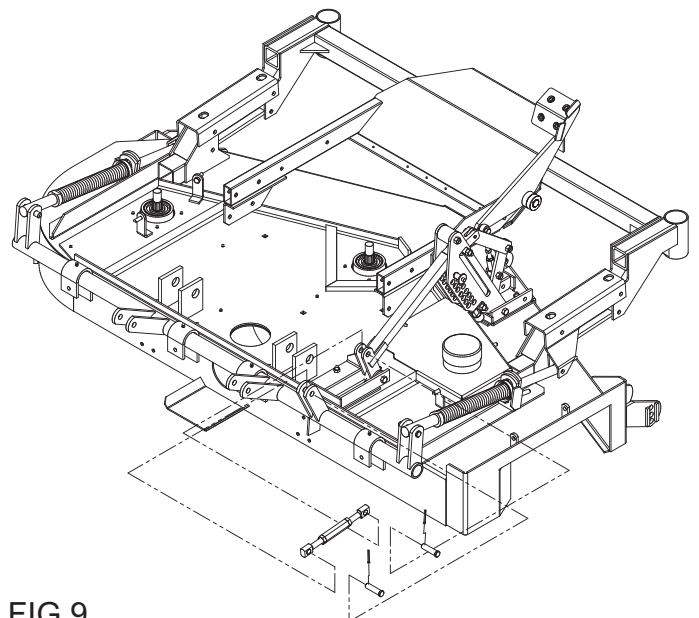


FIG 9

3. FINAL ADJUSTMENTS

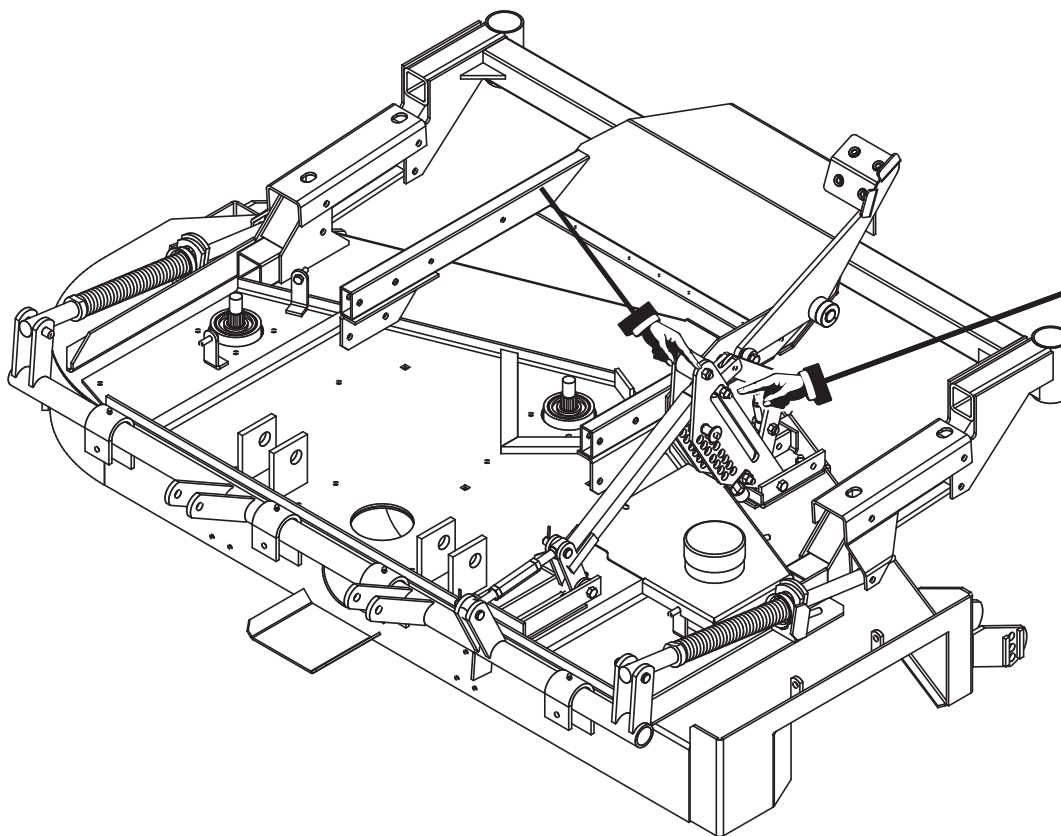


FIG 10

- A. After everything has been assembled, make certain the height bracket assembly is properly aligned by simply loosening the bolts shown in Fig. 10 and re-tightening them being careful not to over-tighten them.

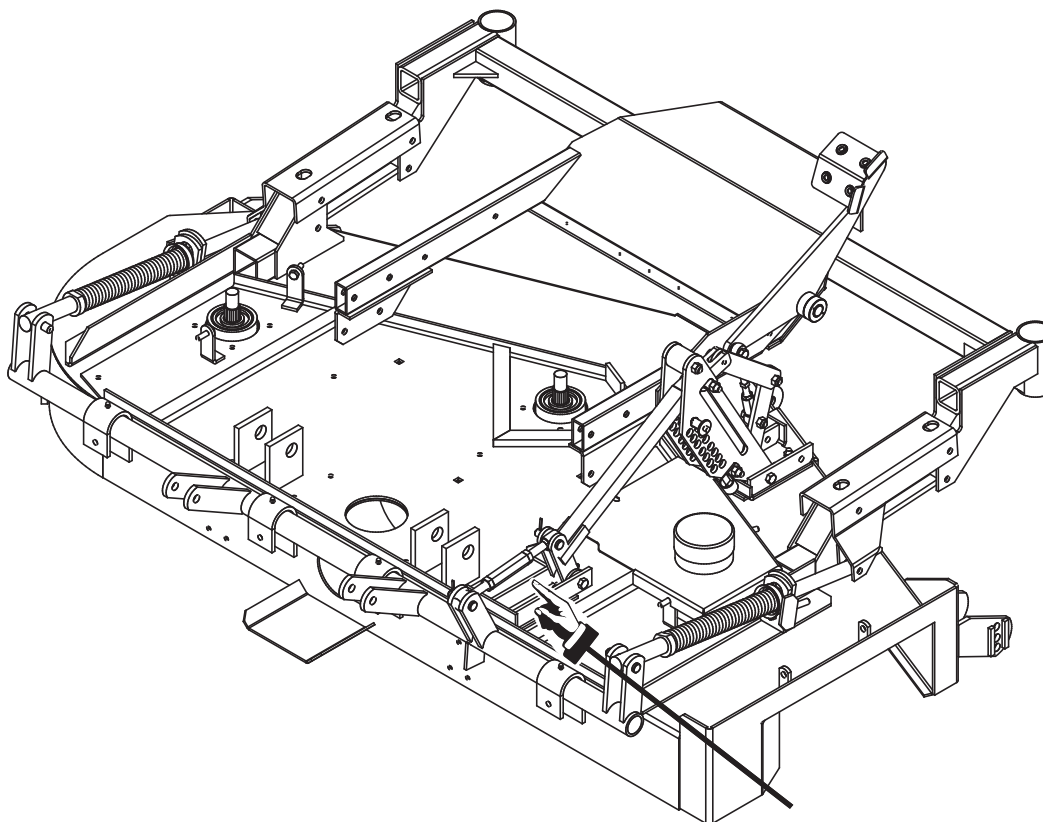


FIG 11

- B. In order to get the actual blade height to correspond to the label on the height bracket assembly, the length of the lift link assembly that connects the height bracket assembly to the rear deck tube may be adjusted.



ENCORE
MANUFACTURING CO. INC.

2415 Ashland Ave. ♦ Beatrice ♦ Nebraska ♦ 68310
1 - 800 - 267 - 4255 ♦ www.encoreequipment.com