



SERVICE BULLETIN



WORL DLAWN POWER EQUIPMENT, INC.
2415 Ashland Ave
Beatrice, NE 68310
(402) 228-4255

Bulletin Number: SB1405
Date: 8/15/14

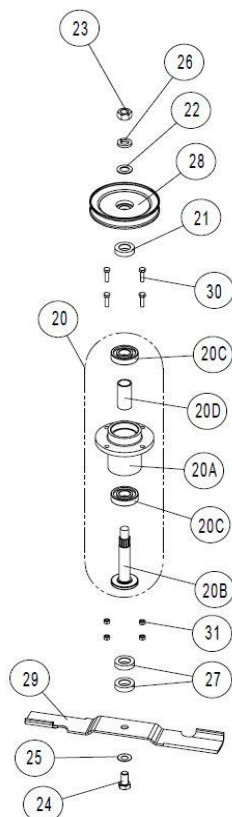
Product Affected: X-Treme, Prowler, and Fuzion mowers with serial number 58436 and above.

Situation: We had several field failures of the top spindle pulley. The description usually included that the pulley and or spindle shaft splines stripped out.

Solution: We found some parts variances that could cause the flat washer to contact the top of the spindle spline when the top nut was tighten. Should that occur then there would be insufficient clamp load on the top pulley. The insufficient clamp could allow the top pulley to wobble resulting in spindle shaft to pulley failure.

Parts Required: 823015 machined spacer reference Item 22 below
 One per spindle.

Warranty: Should a warrantable failure occur as described above the addition of the washer is warrantable and encouraged.



20	583106	3	BLADE SPINDLE ASSY
20A	583111	3	SPINDLE HOUSING
20B	583112	3	SPINDLE SHAFT
20C	363350	6	BEARING - BLADE SPINDLE
20D	583113	3	BEARING SPACER TUBE
21	583110	3	PULLEY SPACER
22	823015	3	WASHER
23	104511	3	3/4-16 HEX NUT
24	100347	3	5/8-11 X 2 HHCS
25	583108	3	5/8 DISC SPRING WASHER
26	105010	3	3/4 LOCK WASHER
27	363382	6	BLADE SPACER
28	603070	3	7" HEX PULLEY
29	603035	3	20" BLADE
30	100274	12	5/16-18 X 1-1/4 HHCS
31	104256	12	5/16-18 NYLOC NUT