

Community Newsletter

Historic Glyndon, Inc., Fall 2025 • <https://historicglyndon.org>

Greetings from Historic Glyndon, Incorporated

This fall has already been a busy season in Glyndon, with our successful Celebrate Glyndon event and Porch Reading in October, as well as GCA's Halloween event and Emory Grove's Maker's Market (photo below). As the air starts to turn crisp and the leaves begin to change, I'm reminded of all the reasons that autumn in Glyndon is my favorite time of year.

I'm overwhelmingly grateful for the opportunity to have served two years as President of Historic Glyndon, Inc., alongside a dedicated board of directors who have been hard at work planning the upcoming holiday events for all of us to enjoy. It is a joy to work with friends and neighbors who show their love for Glyndon through service to the community.

As you begin planning your busy winter calendars, be sure to make time for all of those holiday traditions that make Glyndon a special place to live. Don't forget to renew your HGI membership in January. We look forward to unveiling the 2026 car magnet for those who join or renew their memberships in 2026. You can also gift an HGI membership (or Glyndon history book) to your loved ones this winter!

On behalf of your HGI Board of Directors, I wish you all a peaceful and restful holiday season!

Dr. Ted McCadden *HGI President 2025*



Celebrate Glyndon Event: Digging Up Glyndon

On Saturday morning, October 4, HGI "dug up the past" when Dr. Zachary Singer, State Terrestrial Archaeologist at the Maryland Historical Trust, joined us on the post office lawn to share information about the recent dig conducted on the grounds of St. John's Western Run Episcopal Church located in the neighboring Worthington Valley National Register Historic District. Dr. Singer explained that archaeologists excavated stone tools and chipping debris associated with chalcedony, suggesting tools made 13,000 years ago. Many in the assembled crowd marveled at the realization that humans lived in this area that long ago. Chalcedony is a type of quartz, and the ancient tools found were likely used for scraping animal hides. Dr. Singer included local volunteers in the dig. He encouraged residents to keep an eye out for similar finds on local properties.

Glyndon children had fun at the event's junior excavation station where they sifted sand to find treasures. Coffee and treats topped off this informative and fun morning with neighbors. *Nan Kaestner*

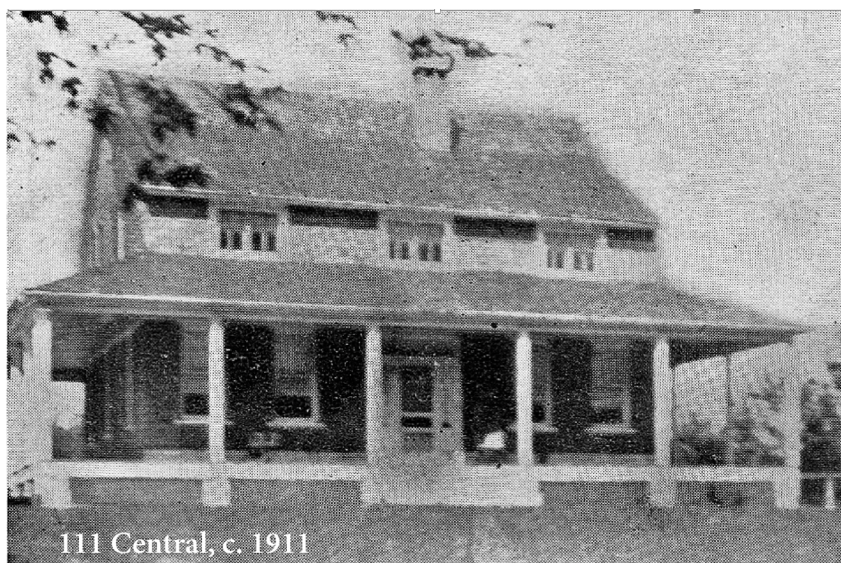


Above Dr. Singer explaining the project



Right Residents could view the display illustrating the dig, while young archeologists dug in.





This tract changed hands several times as a lot before the house was constructed from Mordicai and Mary Cockey's purchase of it in 1884 from Dr. Charles A. Leas to Fletcher and Mabel Watson in 1905, and then to Rev. John and Annette Sumwalt in 1906. Once again it quickly sold nine months later to Edwin and Blanche Stringer. It is not known for certain whether at the time of this last transaction if the land had a house on it; therefore, the original owner of the house may have been either of the latter couples. The Sumwalts were familiar with Glyndon because for a number of years, Rev. Sumwalt was active in the Emory Grove camp meetings. During this time, he was the presiding pastor at the Eutaw Street Methodist Episcopal Church, followed by a term at the Fayette Street Methodist Episcopal Church, both of them in Baltimore. A 1906 article in *The Sun* newspaper (17 May 1906) mentions that Rev. Sumwalt "will spend the summer in his cottage at Glyndon, Baltimore [c]ounty." The timing of this matches his owning of the lot at 111 Central so it is highly likely that the Sumwalts had the house constructed. In the spring of 1907, Rev. Sumwalt became the presiding elder of the Washington district of the Methodist Episcopal Church and the couple moved to the District of Columbia. Shortly afterwards, the Stringers bought the property.



The Stringers had local connections. Edwin "Ted" Stringer, the son of a Methodist minister, moved to Glyndon around 1886 at age 8 when his parents, Rev. W. R. and Roberta Stringer, had the house

Edwin R. Stringer, *The Dial*, 1921, Franklin High School Yearbook

at 4608 Prospect Avenue constructed. Unfortunately, the Reverend died two years later, and Mrs. Stringer was left alone to raise her three sons. Edwin had two brothers, John and William. They probably were familiar with the area due to the nearby Methodist camp meeting ground Emory Grove. Edwin became a lawyer and practiced law in Glyndon for a number of years before establishing an office in Baltimore City. He served for a time as solicitor for the Glyndon Permanent Building Association. Mr. Stringer was well thought of throughout the community. The 1921 edition of the Franklin High School yearbook, *The Dial*, is dedicated to

"Edwin R. Stringer, Our Friend." Edwin's wife was Blanche Heyser, a Baltimore City girl who grew up summering in her family's second home at 4611 Butler Road (at the corner of Worthington Hill Drive). Blanche was an active member of the Woman's Club of Glyndon and served as its president briefly in 1913 and then from 1914 through 1915. She and Edwin were known affectionately by neighbor children as "Auntie Blanche and Uncle Ted." Sadly, their only child, Edwin Roulette Stringer, Jr., died at age five months, 17 days.

Tragically, Edwin Stringer took his own life in 1927. According to his obituary, "Mr. Stringer had been in ill health for more than six months. He was planning to undergo an operation next week, it was asserted, and had been worrying over it." (*The Sun*, May 8) The widowed Blanche sold the house in 1930. After living for a while with her father and spinster sister, Gertrude, at the Butler Road family home, now a year-round residence, she moved to the Pinehurst/Cedarcroft area of northern Baltimore City. Eleanor Taylor and her sister Martha Healy, life-long residents of Glyndon, remembered when they were little girls that Blanche would return regularly to Glyndon to visit and play cards with her friends, including their mother, Ida Healy.

The subsequent owners of the house were D. Howard Bollinger, a bookkeeper for Standard Oil Company, his wife Catherine May (known as May), and their three children—Carl Eugene, Margaret Estelle, and Kenneth Debaugh. May lived in the house until just before her death in 1982 at 89 years of age.

Ann B. O'Neill

Many years ago, HGI initiated “Porch Readings” as a nod to the original Glyndon Porch Class. The Porch Class started in 1898 when a group of women summering in Glyndon decided to meet on their various porches to read and discuss literature, as book clubs do today. As participation in the porch class grew, the group turned to more civic endeavors and became the Woman’s Club of Glyndon. In 1932, they purchased the former Glyndon School building on Butler Road, which they still use today. In recognition of those interesting women in the original porch class, HGI has, for many years, sponsored porch readings.

Our popular Children’s Porch Reading was held at the home of Mark and Marti Clements on June 24. It featured the book *And Then Comes Summer*, which captures the magical delights of summer. The event was attended by 55 neighbors and included backyard games, water fun, and lots of popsicles in addition to the reading.

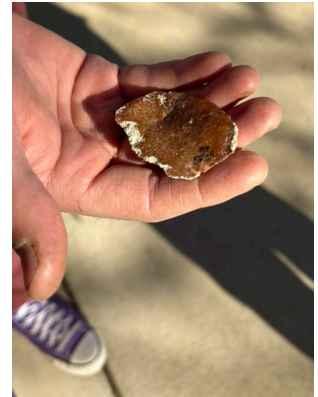
The Almost Summer Solstice Porch Reading was held on June 19 at the home of Bob and Nan Kaestner and featured poems, stories, and music, to celebrate the season. Participants brought summer poems and Glyndon summer memories to share. Favorite summertime songs were played by David Hughes, and cool refreshments completed the fun.

Last, the Dark and Stormy Night Porch Reading was held the evening of October 9 at Richard Stanley’s home. As the leaves swirled, folks were treated to spine-tingling poetry, scary stories, and warm refreshments. Neighbors also enjoyed classic poetry recitations from Glyndon children and live spooky music by Dave Hughes; all added to the ambiance. If you have not attended a porch reading, participation is voluntary and many just come to observe and enjoy. Help keep this Glyndon tradition alive!

And two from the Glyndon Porch Readings



More Photos from Celebrate Glyndon

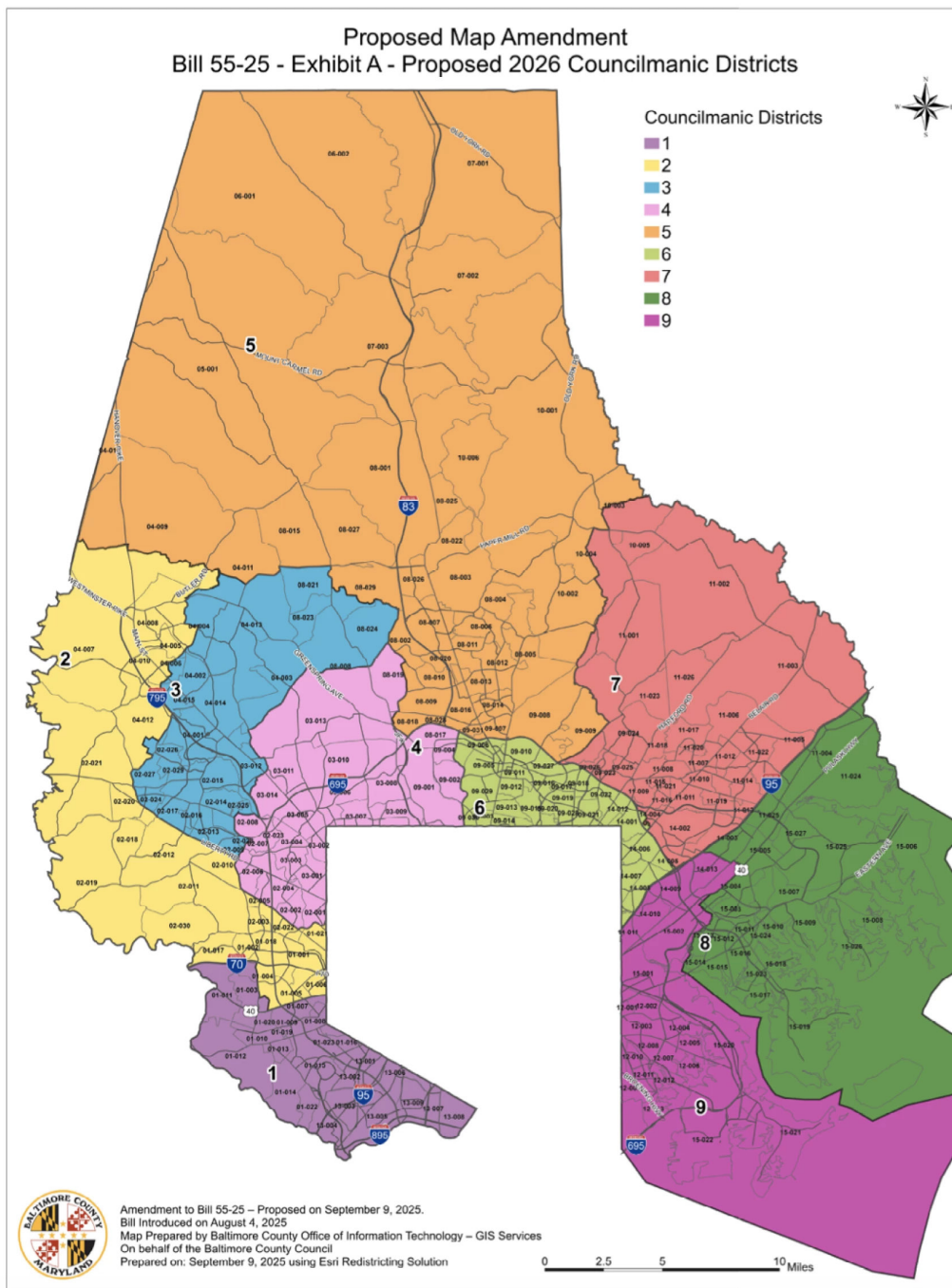


Above: Children dig for artifacts and enjoy some snacks



Above: Dr. Singer explains display





Redistricting Map Passed by County Council

Baltimore County has adopted a new councilmanic district map, expanding the number of districts and councilmen from seven to nine. It is always a difficult job to draw lines on a map with the goal of creating fair representation. One of the many challenges is to keep established communities in a single district, something residents tend to strongly prefer. Glyndon's historic district has been split in previous redistricting cycles, but in the latest map, the entire historic district is contained in what will become the new District 2.

This revised district is an oblong band hugging the west side of the county and stretching roughly from I-70 at the southern end, where it joins District 1 (Catonsville), to Glen Falls Road in the north, where it connects to the

new District 5, which contains the majority of the county's farmland (formerly District 3). The new map was passed in a 5-2 vote at the Council's September 15, 2025 meeting. There could be legal challenges, but barring that, this will be the final map and take effect in 2026, when nine councilmembers will be elected to represent each of the newly drawn districts.

Since each council person makes appointments, this will mean additional members will be added to the Planning Board, Board of Appeals, Landmarks Commission and other local bodies. HGI president, Ted McCadden, who currently serves on the Landmarks Commission, made meaningful comments to County leaders regarding Glyndon's desire to be contained within one district.

Teresa Moore

Coming June 2026: Historic Glyndon's Home & Garden Tour

We're thrilled to announce the return of the Home and Garden Tour in beautiful, historic Glyndon! Mark your calendars for June 13, 2026 and get ready to explore stunning gardens and charming historic homes. More details will be shared soon at historicglyndon.org — stay tuned! *Patty Szparaga*

HGI Website Gets a Refresh

We are pleased to announce the launch of our newly redesigned Historic Glyndon website — a fresh new look for a timeless community. Visit us today and rediscover Glyndon online at historicglyndon.org.
Patty Szparaga

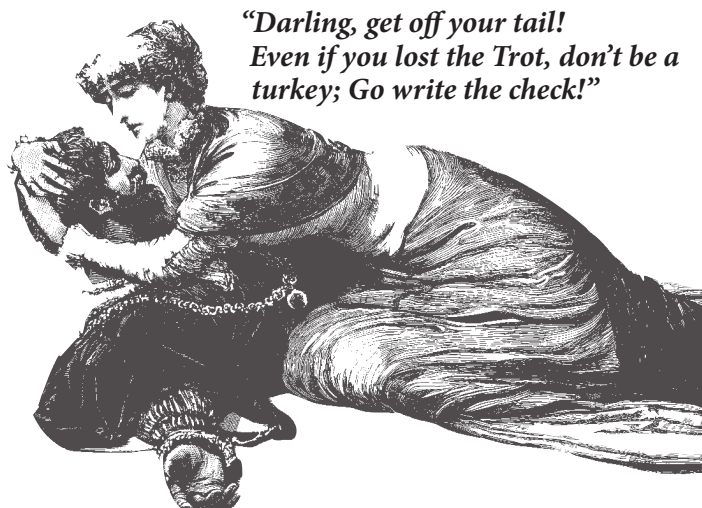


Museum, commissioned the first commercial Christmas card in 1843. The initial print run was for 1000 cards. By the 1850s, cards were making their way to America, but were relatively expensive here until the 1870s. Louis Prang (1824-1909) was a Prussian-born lithographer who emigrated to Boston in 1850. He became known as the father of the American Christmas Card after his printing company started printing and popularizing an American version.

The Origin of Christmas Cards

According to the Postal Museum in London, the first Christmas card was created during the Victorian era shortly after the Penny Post took effect in 1840. The Penny Post established a uniform and affordable rate to mail a half-ounce letter between any post offices in Britain. (Prior to this, distance was a factor in the price of mailing a letter.) Queen Victoria reportedly sent the first such card, and Sir Henry Cole, founding director of the Victoria and Albert

Unlike the English cards, which were black and white lithographs that were then hand colored, Prang utilized a process of colorizing using stone plates with individual colors that were applied in various combinations to achieve a vibrant design. His first cards were issued in 1875, and the tradition took off from there. Although family newsletters and electronic greetings have flourished in recent years, many still enjoy sending, receiving, and displaying specially chosen Christmas cards, just as they did in prior centuries. *Teresa Moore*



*"Darling, get off your tail!
Even if you lost the Trot, don't be a
turkey; Go write the check!"*

Membership Dues Reminder

Visit <https://historicglyndon.org> to pay your dues online with paypal or download the form and mail it with your check to:

HGI
PO Box 3641
Glyndon, MD 21071-3641

Please note: Any dues paid in 2025 will apply to 2025. Please pay your 2026 dues after January 1. For your convenience, you may pay dues in person at HGI's annual meeting, typically held in the 3rd or 4th week of January. Doing so will enable you to vote at the meeting.

HGI Mission Statement

The mission of HGI is to preserve and protect Glyndon's cultural, social, economic, and architectural history, as well as to conduct educational and beautification projects which enrich Glyndon's historical heritage.

HGI Board 2025

President Ted McCadden
1st VP Jayme Provencher
2nd VP Richard Stanley
Treasurer..... Christy Garman
Secretary Pamela Becker
Immediate
Past President Diane Flayhart

Board Members,
Terms Ending :

Nicole Crumpler	(2026)
Nan Kaestner	(2026)
Kate Plaut	(2026)
Patty Szparaga	(2026)
Karen Cervino	(2027)
Michelle Kriebel	(2027)
Teresa Moore	(2027)
Mary Ellen Porter	(2027)
Karen Wrzesien	(2027)



**Glyndon
History books
make great
holiday gifts!**



Shine Your Light This Holiday Season

Candles (or in modern times electric lights that look like candles) in the windows at holiday time have become a universal sign of holiday hospitality. Candles in windows of Glyndon homes help beautify and brighten our lovely historic community that is rich in stewardship, tradition, and fellowship.

Join Us – HGI Encourages Participation by All

HGI is pleased to have 99 individual members and 7 business members. A community organization is only as strong as its membership, so thanks to all for such enthusiastic support. New residents are especially encouraged to join in the fun at events and to participate in meetings. Individual memberships are \$20 per year, and business memberships are \$30.

Each year, the HGI board has several seats that come up for renewal or replacement. We are always on the lookout for residents who have an interest in historic preservation and would like the opportunity to engage with like-minded neighbors. Please reach out to an existing board member if you would like to be on our slate for 2026, or contact the board via the website.

HGI offers special thanks to these local businesses for renewing their HGI membership for 2025:

Black-Eyed Susan

The Boxwood Collection

Bowerbird Vintage

Gettier-Montanye, Inc.

Glyndon Lord Baltimore
Cleaners

Santoni's Marketplace & Catering
Woman's Club of Glyndon, Inc.



HGI Holiday Open House will be held on Sunday December 7, from 2-5 pm. Friends and neighbors will gather for this annual event that allows neighbors to mingle and enjoy one of the beautiful homes in our neighborhood. Invitations with the details will be hand delivered to Glyndon residents.

GCA Tree Lighting

Sunday, December 7 immediately following the HGI Open House, GCA will host the annual tree lighting in Glyndon Station Park at 5:30 pm. Come sing along with the holiday carolers and sip hot chocolate with your neighbors as we await the arrival of a surprise guest!