

# Community Newsletter

Historic Glyndon Inc.  
Spring 2023 • <http://historicglyndon.org>

## President's Letter

Dear Glyndon Neighbors and Friends,

With the daffodils and forsythia blooming, we know spring has arrived in Glyndon. Spring is one of my favorite times of year – we get to open our windows and let the warm breeze fill our houses and turn the radio on to listen to the Orioles get ready for another season of baseball!

Another great part of spring is getting to see our neighbors outside – walking to the Post Office, getting their gardens ready, or just enjoying the warm sun.

HGI has a few upcoming events this spring and summer – and we hope that you can join us.

- On May 17, 7 pm, at the Emory Grove Hotel, we will host our annual May Preservation Program, “Elizabeth Cady Stanton: Equality for All!” The fun and fascinating program will feature a professional costumed actress, followed by refreshments.

- This spring, working with GCA and the community, we will be planting trees along Railroad Avenue. Bring your shovels and help us dig! We will send out an email with the date and time.
- This summer we will host two Porch Readings (date/time TBD later this spring). These are wonderful opportunities to catch up with neighbors and friends, enjoy a cold beverage, and listen to an interesting reading. The first Porch Reading is designed to delight the children of the neighborhood, so all kids – young and old – are welcome and encouraged to attend. The second event – one that Edgar Allan Poe would have enjoyed – is geared to adults.

Please reach out to us with ideas on ways HGI can continue to make Glyndon a great place to live! Email [hello@historicglyndon.org](mailto:hello@historicglyndon.org) or talk with a current board member.

Best,

Diane Flayhart

May Preservation Program: Wednesday, May 17, 7 p.m., Emory Grove Hotel

## Elizabeth Cady Stanton: Equality for All!

*A Presentation by award-winning actress and Smithsonian Scholar Mary Ann Jung*



GLYNDON PORCH CLASS

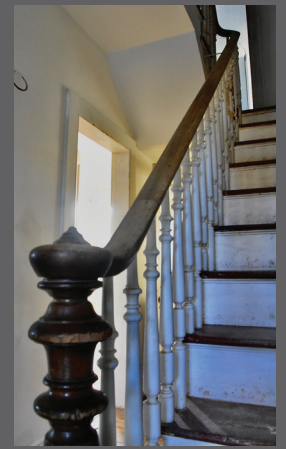
Join us at HGI's annual May Preservation Program to be held on Wednesday, May 17, 7p.m. at the historic Emory Grove Hotel. See history come alive with actress Mary Ann Jung portraying Elizabeth Cady Stanton, the 19th-century champion of women's rights.

You'll hear about Stanton's impressive efforts to improve women's education, legal rights, and even fashion! Stanton was particularly fascinating and possessed several attributes other suffragists lacked: a husband, seven children, a tremendous writing ability, and a wicked sense of humor.

We hope to see you as we celebrate the 100th anniversary of Women's Suffrage (2020), and hear from one of the movement's pioneers – Elizabeth Cady Stanton. The event is free, and refreshments will be served.



## Historic Homes of Glyndon 122 Central Avenue



Top left:  
Joanna surrounded by  
packing boxes

Top right:  
The historic bannister  
and newel post

Bottom:  
The new kitchen

Since 2014, our family has called 14 Glyndon Avenue our home. My husband, Kevin, and I appreciate all things old, and we cherish the uniqueness of our home. We enjoy working on small projects around the house – and there are plenty!

In the Spring of 2020, our next-door neighbor, Mr. Kistler, asked if we'd like to purchase the house on the corner of Central and Glyndon Avenues. We thought it over and agreed that we wanted to fix up the beautiful house with Gothic windows. For years, we've admired the wrap-around porch and wavy glass windowpanes. Inside, the walnut bannister and random-width original flooring sealed the deal. The house was full of history, and we wanted to preserve it.

After purchasing the house, we decided to remove a previous back addition and replace it with a two-story addition that would include a kitchen, mudroom, main bedroom, and main bathroom. Landmarks Preservation Commission (LPC) guided us in the design to create an addition that would complement the original structure.

Prior to any rehabilitation work, we applied for historic tax credits through both Maryland Historic Trust and Baltimore County Landmarks. These two historic preservation groups instructed us on how to apply, and what is appropriate for tax credits. The application process took a few months to

complete. One of the eligible tax credits included lining the chimneys, however, both MHT and Landmarks required that we not disturb the original brick bishop's caps.

The scope of work was beyond our capabilities, and we hired the contracting company Clarksville Construction. To our surprise and delight, Clarksville sent Ben Montanye – who grew up in Glyndon – to navigate us through the decision-making process! Ben shares our appreciation of historic structures and helped us understand how to preserve the charming details of the house. One such detail is a jib door, which is a window turned into a door, that led to a sleeping porch. Since the sleeping porch was removed, we transferred the jib door to an interior space in the house. It is functional, but its purpose now is sharing and showcasing history.

The renovations are nearly complete, and we are delighted. The "red house" has a new custom color kindly shared with us by a nice lady whose house on Reisterstown Road we admired. The shutters are painted a dark green, similar to the original color. The missing shutters were replicated by Reisterstown Lumber Company, using Spanish cedar.

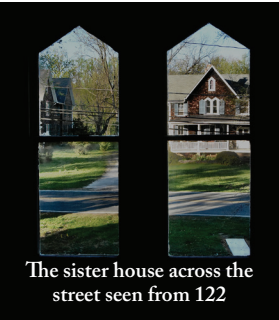
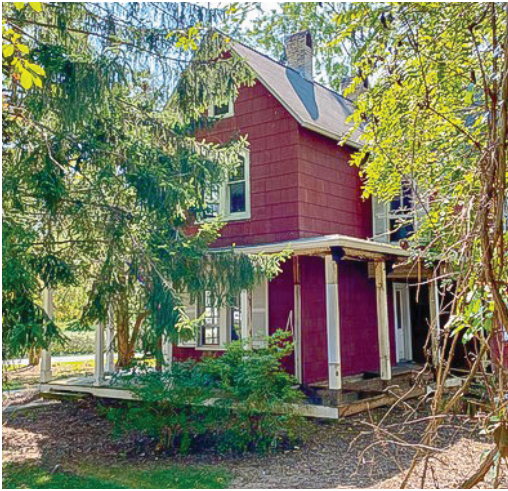
We are very appreciative of the support from our neighbors who have assisted us along the journey!

*By Joanna Clements*



## A Brief History of 122 Central Avenue

*Note: This article is an abbreviated version of one that appeared in an earlier newsletter. For the article in its entirety, please go to <https://historicglyndon.org/wp-content/uploads/2021/06/hgi-newsletter-2020-fall.pdf>.*



The sister house across the street seen from 122

**B**uilt about 1885, the house at 122 Central Avenue was one of six that Glyndon founder Dr. Charles A. Leas commissioned as tenant houses. His dual purpose was: to provide an

investment for himself through the rent he would receive and to encourage the growth of the young village. The design of this structure mimics that of two others of Dr. Leas' tenant houses, most notably the pointed arched windows of the Gothic Revival style.

Upon his death, Dr. Leas left the six investment properties to his three

daughters. Mary Eliza Smith, Dr. Leas' second daughter, inherited the house at 122 Central Avenue. Mary and her husband, Thomas, lived most of the year in Baltimore and spent the summer months in their Glyndon home at 220 Central Avenue, which they had built about 1891.

Mary and Thomas Smith had only one child—Rosamond Erin. Rosamond inherited both of the houses left to her mother by her grandfather. As an adult, she lived for a while at 14 Glyndon Avenue and took in lodgers. Eventually, she moved to the house at 122 Central Avenue, and it was there that she spent the remaining years of her life.

Rosamond was an artist and a graduate of the Maryland Institute (College of Art). In her later life, she taught art at the Hannah More School in nearby Reisterstown. Rosamond was tremendously devoted to Glyndon. One of her favorite declarations was, "I'm a woman of the soil and I love Glyndon, every inch of it." She was active in a variety of causes and organizations, including local politics, the Woman's Club of Glyndon, and the Ladies' Guild of All Saints' Episcopal Church. One of her obituaries read, "Townsppeople considered the firm-minded retired teacher its first lady." (*The Evening Sun*, 17 Sep 1956)

Rosamond died in 1956. Her home at 122 Central was sold in 1957 to Robert and Mary Kistler. The property stayed in the Kistler family for the next 63 years until it was purchased recently by next-door neighbors Joanna and Kevin Clements, who have undertaken the task of renovating the house.

By Ann B. O'Neill

## Glyndon "Clean-up" Events



**L**ast fall, the Glyndon Community Association (GCA) launched a series of Community Clean-Up days. The first two days were focused on the Butler Road gateways to Glyndon—the bridge and Worthington Hill. This spring, efforts have focused on Glyndon Station Park and Railroad Avenue.

GCA President Michael Gedraitis describes these events as "a way for neighbors to reconnect and have fun while taking care of the neighborhood that we all love." There's a job for everyone—whether it's picking up litter, pulling weeds, or trimming overgrowth away from the sidewalks. Many hands make lighter work, so please consider helping. Dates will be set throughout the year. Watch your email and the post office bulletin board for details.

For more information, contact Michael Gedraitis, GCA President, at [communityassociationglyndon@gmail.com](mailto:communityassociationglyndon@gmail.com) or 410-206-9114.



### What type of tree should I plant?

**M**ature trees have always lent beauty, shade, and a sense of permanence to Glyndon. Sadly, trees don't live forever. If you're wondering what to plant to help "re-tree" your yard, think about planting a native

tree. Arborists also recommend planting a variety of trees to improve disease resistance. Visit these websites for ideas:

- University of Maryland Extension: <https://extension.umd.edu/resources/yard-garden/native-plants/native-trees>
- Maryland Department of Natural Resources: <https://dnr.maryland.gov/forests/pages/marylanders-planttrees/recommended-tree-list.aspx>
- Arbor Day Foundation: <https://arbordayblog.org/tree-planting/need-know-planting-right-tree-right-place>



## Remembering Gene Bosley

Gene Bosley lived in Glyndon for 35 years. In 1983, he and his wife, Tricia, moved into their “new” old home at 325 Central Avenue. They lovingly

cared for and restored the house throughout the years. Their two children, Matt and Kate, were born and raised in Glyndon.

Gene was born on December 15, 1945. He was raised on his family’s farm in Upperco. Hard work and a sense of responsibility were values he learned there, and embraced throughout his life. He recalled milking the cows each morning before leaving for school, and again in the afternoon before starting his homework. Gene loved the land and the animals; it was on the farm that he developed into the man we all admired.

In 1965, after graduating from Franklin High School, Gene was drafted into the Army. A last-minute call from a recruiter, asking him to audition for the National Guard Band as a trumpeter, enabled Gene to serve in a different capacity. After Basic Training, Gene and other band members traveled by bus each morning and attended funerals of service members who had died in the war. There, along with his unit, Gene would play Taps. He was humbled by

that experience and felt had it not been for that last-minute call he likely would have been one of those casualties.

After his service, Gene began his banking career. He worked at Maryland National Bank, Wells Fargo Bank, and most recently at Farmers and Merchants Bank. His successful career spanned almost 60 years. He was well respected and liked by his colleagues and clients.

Gene was involved in many aspects of the community. In 1986, he and Betty Broderick traveled to the Smithsonian to research street signs that eventually were made and used in Glyndon for many years. The Bosleys hosted the annual Christmas open house in 2002. Gene served on the Boards of the Glyndon Community Association and Historic Glyndon, Inc. He co-chaired the dance committee with Tricia for Glyndon’s 125th Celebration. He was the treasurer for the group of residents who purchased and preserved the Post Office building. He actively participated in and supported community businesses and events. According to Tricia, Gene would go to Santi’s every morning for coffee and stop each afternoon on his way home. Lou and Rick Santi made sure the coffee he liked was always in stock. Every Fourth of July a group would gather on the porch of the Bosley home and inflate the balloons for the annual parade. It

was a fun morning; Gene and Tricia made everyone feel welcome.

When asked how she would describe Gene, Gibbey Bell, a close friend and neighbor said simply, “He was always there.” And in fact he was. From setting up and cleaning up after the neighborhood block party, to checking on neighbors who lived alone, Gene was a devoted and caring friend, neighbor and community member. Dave Hughes, another friend and neighbor, said that when he thinks of Gene what comes to mind “was his willingness to help his neighbors. In the winter, he would take as long as it took to snow blow the driveways and parking areas of his friends. He just showed up and did the job, and he would never take money for gas, as much as we all offered.”

After their children were grown and Gene and Tricia found themselves empty-nesters, they decided to build a home on the Bosley family farm. Gene died on March 12, 2022 at home in Upperco on the farm where he was raised. He and Tricia had lived there since moving from Glyndon in 2016.

In addition to Tricia, Gene is survived by his son Matthew Bosley and his wife Megan, and his daughter Kate Smith and her husband Blake, and his grandchildren Blake, Taylor, and Morgan Bosley, and Philip, Ellie, and Conner Smith.

*By Betsy Steele*

## A Friendly 2023 Membership Dues Reminder



*“O Romeo, Romeo, wherefore art our checkbook? Time to renew our membership.”*

### Historic Glyndon 2023 Membership

**YES, I would like to support the cause with my HGI membership!**

Membership dues are \$20.00 per person or \$30.00 per business per year. Pay online at [historicglyndon.org](http://historicglyndon.org). Or, make checks payable to HGI and send along with this form to:

Historic Glyndon, Inc.  
PO Box 3641  
Glyndon, MD 21071

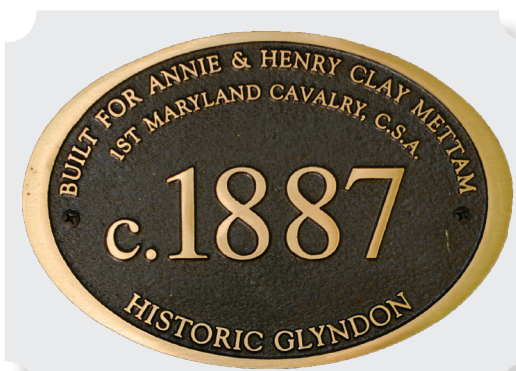
Name(s): \_\_\_\_\_

Address: \_\_\_\_\_

Telephone: \_\_\_\_\_

Primary Email: \_\_\_\_\_





## Historic House Plaque Program

*Editor's note: One of Glyndon's many charming features are the bronze plaques that appear on a number of our historic homes and structures. Ann O'Neill, who initiated the Historic House Plaque Program, gives a history and update of the recently-rekindled program.*

**W**e are currently working to wrap up Historic Glyndon, Inc.'s Historic House Plaque Program. Here's a background on the program and an update on where we are today.

**Background:** In the late 1990s, I approached HGI about sponsoring a program to put historic markers on the older homes and structures in Glyndon. HGI agreed to the program and determined that those buildings constructed between 1871 and 1915 would be eligible for a plaque. The primary reason for the 1915 cut-off date is that most new construction after that time was not in the Victorian style, which was one of the main factors that qualified Glyndon for historic status nationally and locally.

I examined historic plaques in other towns, found the firm Erie Landmarks which made the kind of product that we wanted, and began researching the houses and structures in Glyndon. I have said several times over the years, "If I had known what I was getting into, I would have run in the other direction!" However, I truly am grateful for the project because I found my passion in local history research.

Over the intervening years, I have searched various historical archives: HGI's, the Reisterstown Room at our local library, the Maryland Department at Enoch Pratt in Baltimore, the Historical Society of Baltimore County, the Maryland Center for History and Culture (formerly the Maryland Historical Society), the Maryland State Archives, and the Maryland Historical Trust in Annapolis. I've dug through

deeds at the county courthouse using handwritten, typed, microfilm, microfiche, and electronic methods. The day Charlie Wells told me that all of Baltimore County's deed records went online, I felt like I had won the lottery – no more parking tickets in Towson for exceeding the two-hour limit!

Besides deeds, I have used old tax records, censuses, newspapers, memoirs, interviews, photographs, genealogies, military records, directories, obituaries, death certificates, cemetery records, marriage certificates, and maps. The more I dug around for information, the more interconnections I found

among properties and families. However, more information often resulted in more questions.

It is difficult to determine the exact date of construction for most buildings. Deeds rarely provide that information. Almost all the current tax records have a wrong "structure built" date. For example, the record for 200 Central Avenue states that the primary structure was built in 1932. However, research indicates it was constructed c.1887.

**Where we are today:** While many houses in town have been researched and now proudly display a plaque, there are still a number of qualifying structures without the historic marker. Recently, Kate Plaut joined my efforts to wrap up ordering the remaining plaques. Our goal is to finish over the next year or so. We recently ordered seven plaques, with more to go. The plaques are heavy bronze ovals with a brown background. All contain "Historic Glyndon," a date or approximate date of construction, and something about the original/early owner or family. Property owners are asked to pay \$100 towards the cost of the plaque, with HGI subsidizing the remaining amount of \$125 plus shipping.

For each property, there is usually a lot of information left over, so I write a narrative about each one. Those are the house stories that are included in each issue of this newsletter. Kate and I also share all the historical information with the property owners.

*By Ann O'Neill*

## Upcoming Community Events

- **Bloomin' ArtFest** – May 13, 10 a.m.-5 p.m., Franklin Middle School, Reisterstown
- **Elizabeth Cady Stanton: Equality for All!** ♥.....▶ May 17, 7 p.m., Emory Grove Hotel
- **GCA Community Yard Sale\*** – May 20, 8 a.m.-1 p.m.
- **GCA's 4th of July Parade\***
- **HGI's Summer Porch Readings\***
- **"The Music Man"** – Glyndon Area Players (GAP) – August 4-13, Sacred Heart Parish
- **Glyndon Volunteer Fire Department Flea Market** - June 3, 8 a.m. - 2 p.m.
- **GVFD Food Truck Nights** - July 18, Aug. 29, Sept. 26, 5 - 8 p.m.
- **GVFD Crab Feast** - Aug. 26, 1 - 5 p.m.



• Watch email and post office bulletin board for details.



## HGI Mission Statement

The mission of HGI is to preserve and protect Glyndon's cultural, social, economic, and architectural history, as well as to conduct educational and beautification projects which enrich Glyndon's historical heritage.

## HGI Board 2023

### Officers – One-Year Term:

President: .....Diane Flayhart

1st Vice President: ...Jayme Provencher

2nd Vice President: ..Richard Stanley

Secretary: .....Pamela Becker

Treasurer: .....Christy Garman

Immediate

Past President: .....Sue Benson

### Board Members –

#### Two-Year Term ending in 2025:

Karen Cervino      Ted McCadden

Missy Fanshaw      Michelle Kriebel

Jen Meltzer

### Board Members –

#### One-Year Term ending in 2024:

Nicole Crumpler

Marian MacDonald

Nan Kaestner

Kathy Ziese

## Join us!

Interested in helping with an event or serving on an HGI committee? Email [hello@historicglyndon.org](mailto:hello@historicglyndon.org) or talk with a current board member. Thanks for your interest!

## We're Looking for Old Glyndon Photos

Have any old photos of Glyndon? We would love to post a copy to HGI's website: [historicglyndon.org](http://historicglyndon.org)

Please scan and send them to [hello@historicglyndon.org](mailto:hello@historicglyndon.org). Thanks!

## Recent Happenings Around Glyndon

### HGI Holiday Open House & GCA Tree Lighting

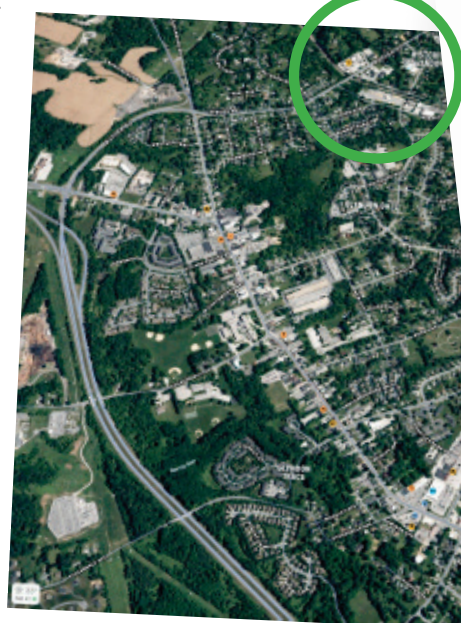
HGI's annual holiday open house was held this year on Sunday, December 11, 2022, at the home of John and Christy Garman. Neighbors enjoyed refreshments, caroling, and catching up while admiring the Garman's beautifully restored historic home. The children's gingerbread houses were displayed on the Garman's porch.

After the open house, guests caroled their way down to Glyndon Station Park for the Glyndon Community Association's annual tree lighting. GCA served hot cocoa and cookies while neighbors caroled and visited with Santa, who was escorted to the festivities by the Glyndon Volunteer Fire Department.



### Reminder: 2022 Edition of Glyndon History Book Available

Have you purchased your copy of the updated Glyndon history book? This 75-page book includes stories about Glyndon and the people, organizations, and structures that made Glyndon the first designated historic district in Baltimore County. Full of many archival black and white photos – some treated in the hand-colored style of vintage Victorian postcards – the book is both beautiful and fascinating. Visit [historicglyndon.org/shop](http://historicglyndon.org/shop) to download the pdf order form.



**Glyndon**  
*The Continuing Story  
of a Victorian Village*

