

Sketch

Use this grid sheet to sketch out the rough shape of your room. It might be an idea to use a pencil in case you need to rub anything out.

Mark positions of doors, windows and anything that sticks out into the room, like a boiler. Don't forget to show where services are currently located for water, electric and gas. Measure everything - and all the spaces in between!

Check

Here's just a few key things to check:

Have you checked if all your walls are square?

Have you measured the height of the room?

Have you shown which way doors open?

Have you measured in millimetres?

Have you marked light switches and sockets?

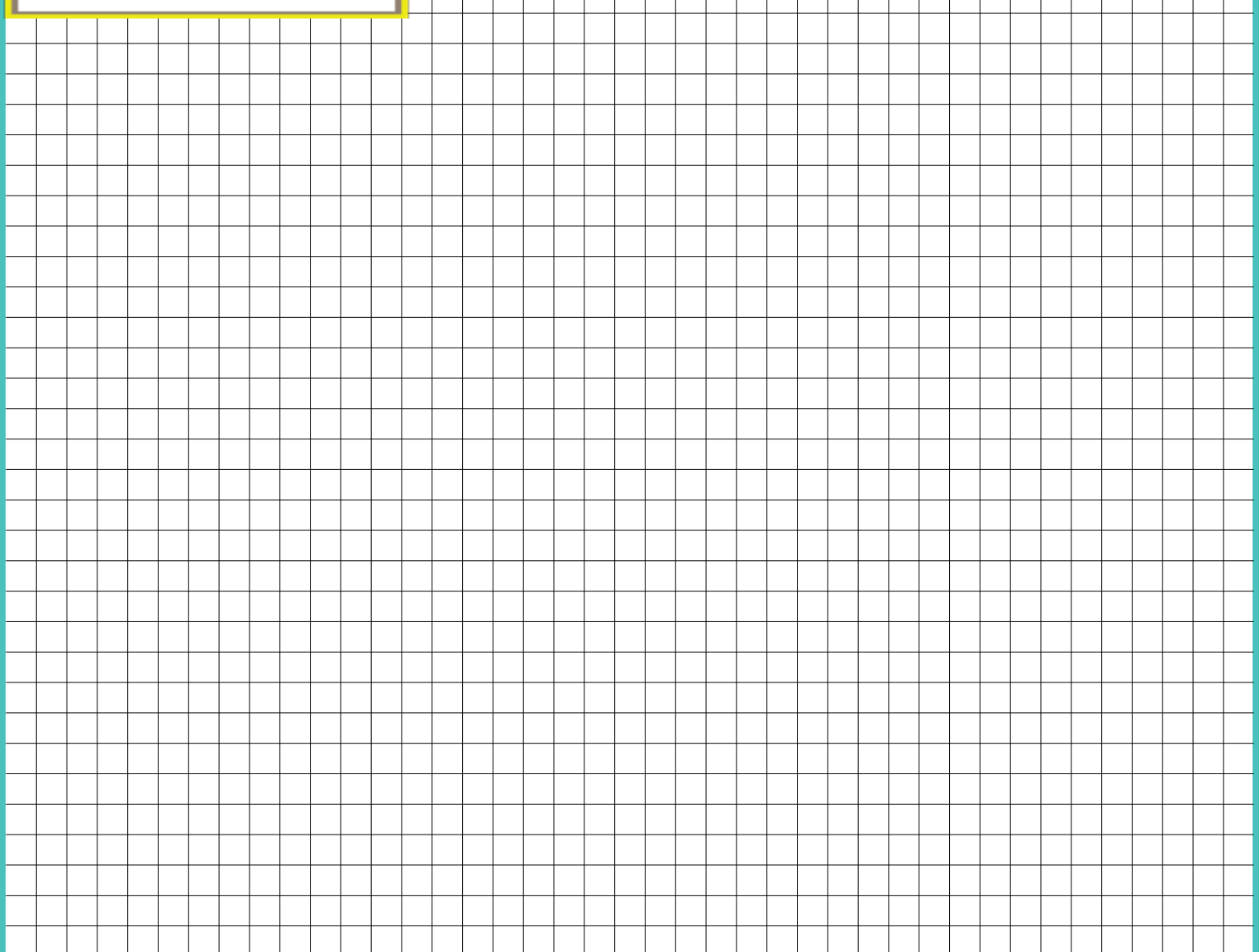
Have you included radiators?



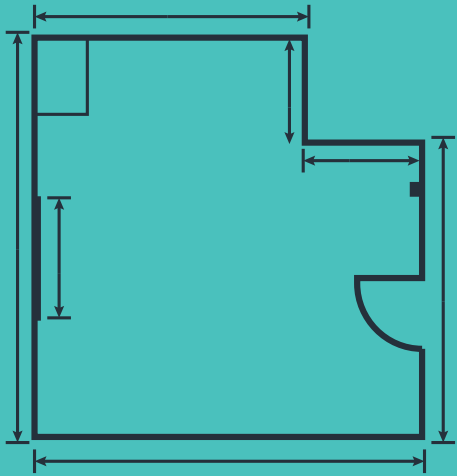
Looking for a great deal?

Look no further as you've just found it!

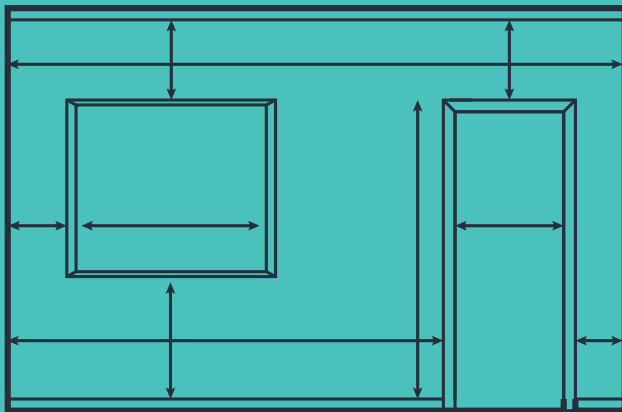
Suppliers of great quality property improvement products



Tips for measuring your bathroom



Floor plan



Wall plan

1 Sketch your room layout

- Turn over to draw your layout. All you need is the general shape.
- Mark the location of windows and doors and which way they open.

2 Measure your room and openings

- Measure the length and width of your bathroom.

Tip: Walls aren't always straight, so measure from the top, middle and bottom if you can.

- The widths of the windows and doors from the outside of the frames.
- The corner of the room to the windows and doors, and the distance between windows and doors.

3 Make note of any obstacles

- You might have a boiler or radiator in your bathroom.
- Measure the width, as well as from the nearest fixed point to the middle of each obstacle.
- Note any plug sockets and light switches.

4 Other things to check

- Are your walls solid or plasterboard?
- Do you have a combi boiler or hot water tank?
- Do you know if your floor is concrete or wooden?
- Do you want your toilet moved? If so, where is your soil stack located?
- Is your pipework run at floor level and boxed in or underneath the floorboards?