



Looking for a great deal?

Look no further as you've just found it!

Suppliers of great quality property improvement products

collection



collection

Curved Edge
Contemporary laminate surfaces

Curved Edge

Contemporary laminate surfaces

Whilst every effort has been made to accurately represent the colours and textures, we are unable to guarantee an exact match due to the limitations of the brochure printing process. E&OE. We reserve the right to amend specifications of products without notice. All dimensions are nominal.

STONE SPARK
(QUARTZ)



Kitchen living room



Ready for action

Curved Edge

For many of us, the kitchen is no longer simply a place to cook. It's somewhere to unwind. To share a bottle with friends. To learn new skills and perfect old ones. It's the reason kitchen living rooms have become so increasingly popular over the past couple of years.

Understandably, with more time being spent in the kitchen than ever before the need for stylish, hard wearing and beautifully modern work surfaces has never been greater.

That's why we're delighted to introduce the Curved Edge range of contemporary laminate surfaces.

Want to know more?
See pages 12-13 for full technical details.

Beautifully tough

Work surfaces

Few work surfaces are as versatile as those in a kitchen or utility room.

They need to be hard wearing, yet easy on the eye; able to accommodate hobs and drainers on top, while enabling ovens, dishwashers and other appliances to work uninterrupted below.

It's why all Curved Edge surfaces are made of hygienic, durable waterproofed materials that work perfectly with everything in your kitchen and utility room.

A choice of 40 stylish décors and 10 textures is available, including dazzling quartz, dramatic dark woods and original abstract designs. Each work surface has one long edge curved to give seamless protection. And thanks to the large dimensions available, wasteful offcuts and joints are both kept to a minimum.

Work surface dimensions

3600mm x 600mm x 40mm

1800mm x 600mm x 40mm

collection

Curved Edge
Contemporary laminate surfaces



CYPRESS
CINNAMON
(WOOD)



Fit for purpose

Breakfast bar and island units

Even in spacious kitchen living rooms, we're committed to helping you make the most of every inch. With the addition of a Curved Edge breakfast bar area and island unit, you'll have more room to prepare food, share meals and simply relax in the heart of you home.

Available in the same 40 décors and 10 textures as the main work surfaces, we've also ensured wide dimensions are available to maximise the additional space available. Furthermore, to keep potentially painful knocks to a minimum, the two longest edges of the breakfast bar and island unit have a smooth curved edge.

Breakfast bar and island unit dimensions

3000mm x 665mm x 40mm

3000mm x 900mm x 40mm

Style and substance

Upstands

When updating your kitchen or utility room, it's only natural you want it to look its best for years to come. That's where our upstands can make a huge difference without making a great dent in your budget. Easy to clean and quick to install, they provide a sophisticated and hygienic barrier between your walls and work surfaces.

Featuring a curved top edge, our upstands are available in the same 40 décors and 10 textures as the main work surface range and ensure a seamless continuation between surface and wall.

They're also easily removed and replaced should you wish to refresh the look of your kitchen in the future.

Upstand dimensions

3000mm x 100mm x 18mm

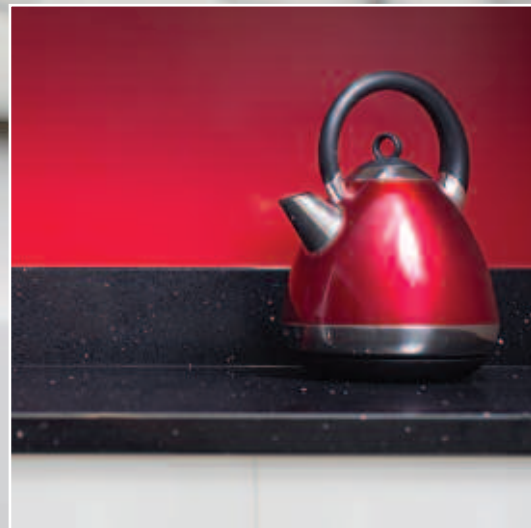


CARRERA
MARBLE
(MATT)



The clear alternative

If you're looking to add a contrasting splashback or feature wall in your kitchen, bathroom or utility room, check out the range of dazzlingly beautiful and affordable acrylic glass panels.



Practical magic Splashbacks

Highly cost-effective, quick to clean and easy to install, splashbacks are an increasingly popular alternative to tiles. They can also prolong the life of your work surfaces and walls by protecting them against water and impact. A win-win in anyone's books.

As you'd expect, splashbacks match perfectly to every Curved Edge work surface and breakfast bar as they share the same 40 décors and 10 textures.

Splashback dimensions

3000mm x 1200mm x 8mm

collection

Curved Edge
Contemporary laminate surfaces

Tried and trusted Award-winning quality

All Curved Edge products undergo a number of tests to ensure each work surface, upstand and splashback not only provides remarkable strength and style, but delivers superior performance against heat, water, abrasion and impact resistance*.



When it comes to checking quality, we're also unapologetically exacting. It's why you'll never see us cutting curved corners or taking the easy option.

Instead you'll find us carrying out test after test to ensure all our surfaces are of the highest standard. It's an approach that has led to Curved Edge achieving the ultimate mark of quality – the FIRA Gold Award.

* Whilst Curved Edge offers additional performance over other work surfaces, standard work surface precautions such as heat protectors and chopping boards should still be used.

Designed for the future Sustainability

Naturally, all the timber used in the production of Curved Edge work surfaces, breakfast bars, upstands and splashbacks comes from well-managed and sustainable forests.

These are certified in accordance with the rules of the Forest Stewardship Council® and the Program for the Endorsement of Forest Certification. What's more, thanks to our impressively realistic wood grain effects and textures it's unnecessary to cut down exotic species of timber within precious forests, or disrupt the earth by mining for granite and marble.



STONE SPARK
(QUARTZ)

Hobs can be installed
into the work surface

Curved Edge
work surfaces

Sinks, taps and
drainers can be
installed into
the work surface

A built-in oven can
be installed under
the work surface

Create a seamless
look with matching
splashbacks

Expand the kitchen
with matching
breakfast bar
and island unit

Create a stylish
barrier with
matching upstands

Washing machine
can be installed under
the work surface

Add some heavy-duty glitz and long-lasting
glamour to your kitchen with Curved Edge.

It's one thing to look the part, quite another to feel the part too. Our designers insist on both. It's why we apply distinctive textures across our high performance laminate surfaces to create a much greater sense of realism.

A touch of class

Authentic textures

What will it be?

Warm to the touch or refreshingly cool?
Naturally weathered or luxuriously smooth?

There's no right or wrong answer of course, it all comes down to personal choice.

With this in mind, we've created a wealth of texture options for you to choose from that perfectly complement our range of distinctive décors.

Quartz†

A gloss surface with multi-coloured metallic elements freely distributed within the décor to give a dazzlingly unique finish.

Gloss†

This ever-popular, highly reflective and luxurious finish brings added glamour to your surface of choice.

Matt

Used with some of our stone and wood décors, this delicate texture provides a distinctly natural look and feel.

Satin

This hard wearing finish provides a semi-polished sheen that enhances the colour of the décor.

Stone

Easy to clean and maintain, the non-reflective and subtle unevenness mirrors freshly quarried natural stone.

Wood

Subtly and ingeniously replicates the natural grain of real wood.

Nature

This texture provides a subtle satin feel, evoking the raw sensation of granite.

Glaze

A stunning effect that combines subtle surface ripples with gloss and matt.

Sirius

Scratch resistant and hard wearing, this texture is ideal for highly used work surfaces.

Mika

This highly tactile finish creates the touch sensation of naturally weathered slate.

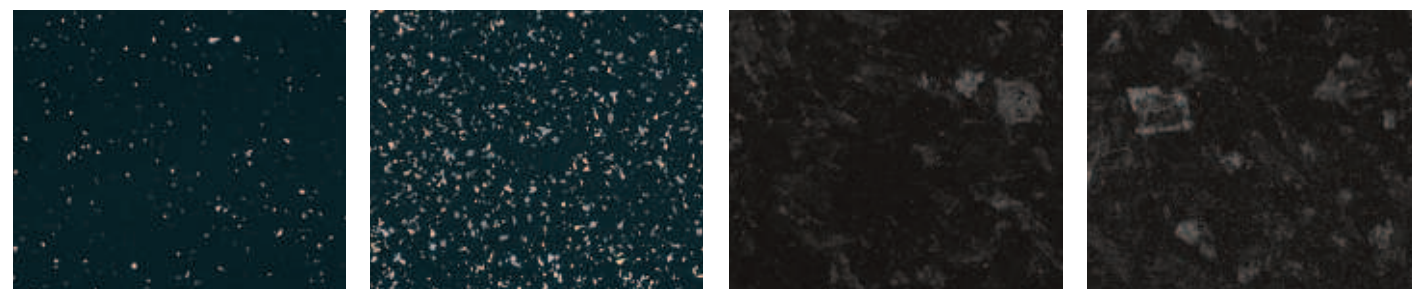
† **Please Note:** Quartz and Gloss surfaces are more susceptible to scratches than other work surface finishes, so additional care must be taken when handling and cleaning.

NATURAL
OAK
(WOOD)

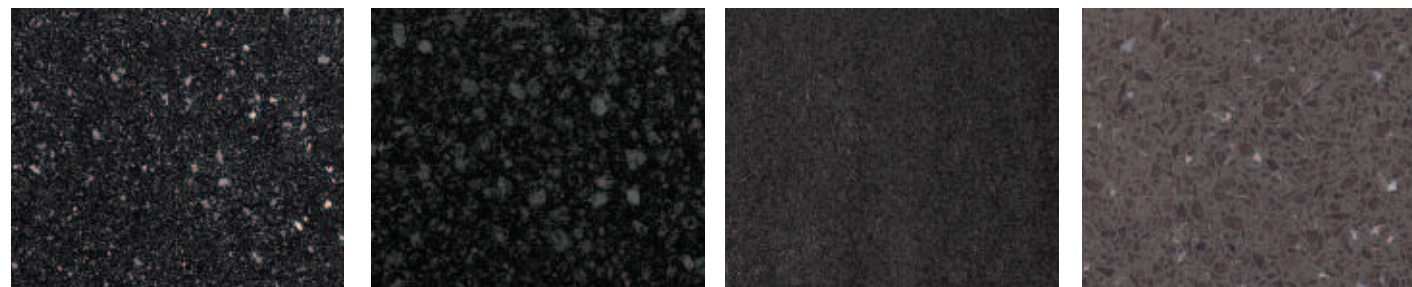
Swatch sample scale is 1:2
Please also take a look at the sample book for larger décor images.

Setting the tone

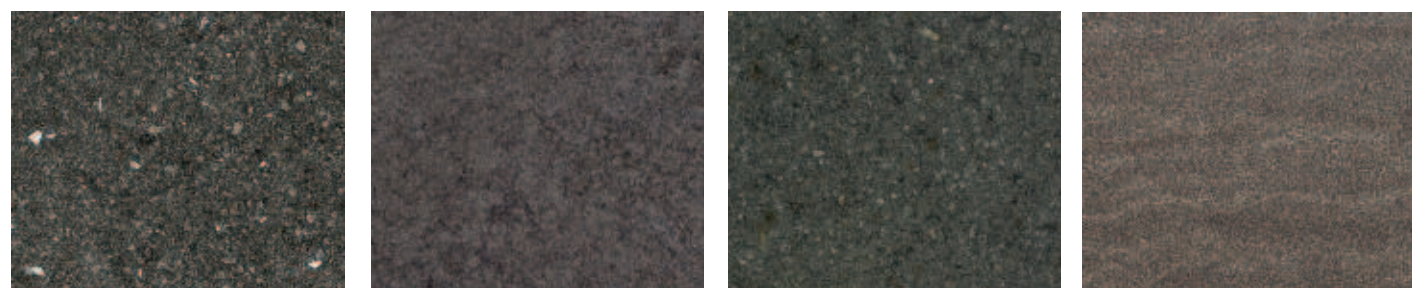
Décor options



Andromeda Black | Quartz Black Spark | Quartz Black Slate | Gloss Black Slate | Satin



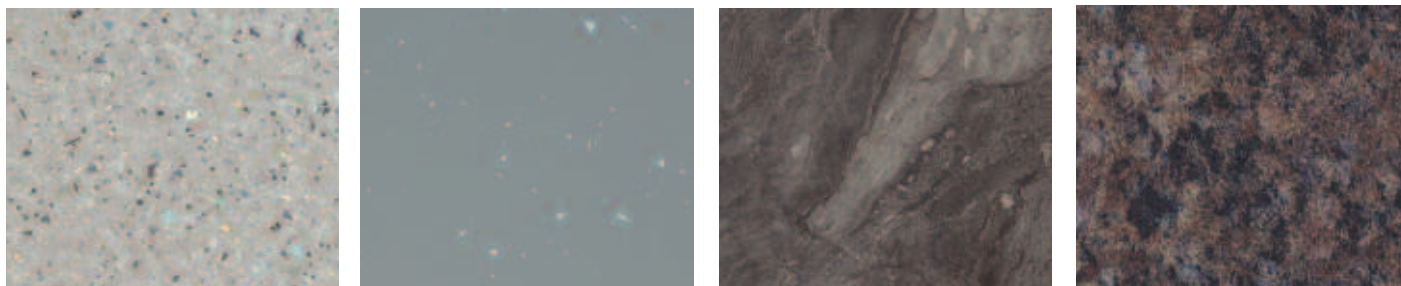
Black Sirius | Sirius Taurus Black | Satin Lunar Night | Glaze Stone Spark | Quartz



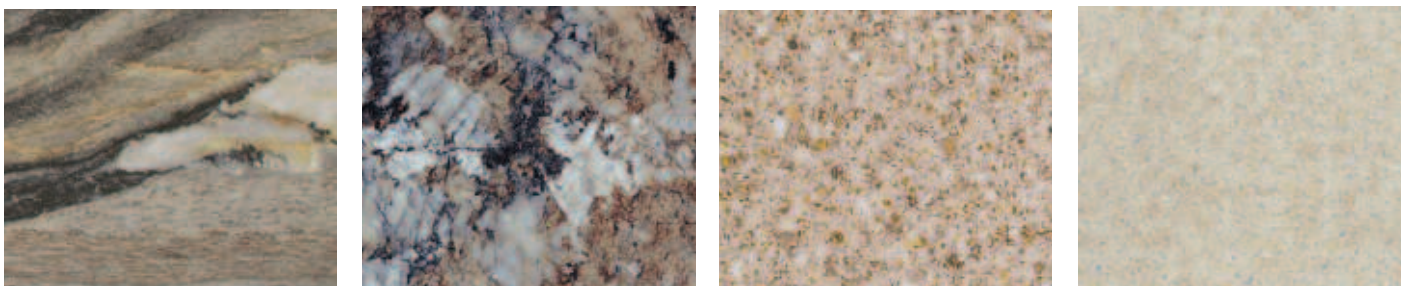
Andromeda Smoke | Quartz Celtic Granite | Glaze Anthracite Artstone | Glaze Lava Sand | Matt



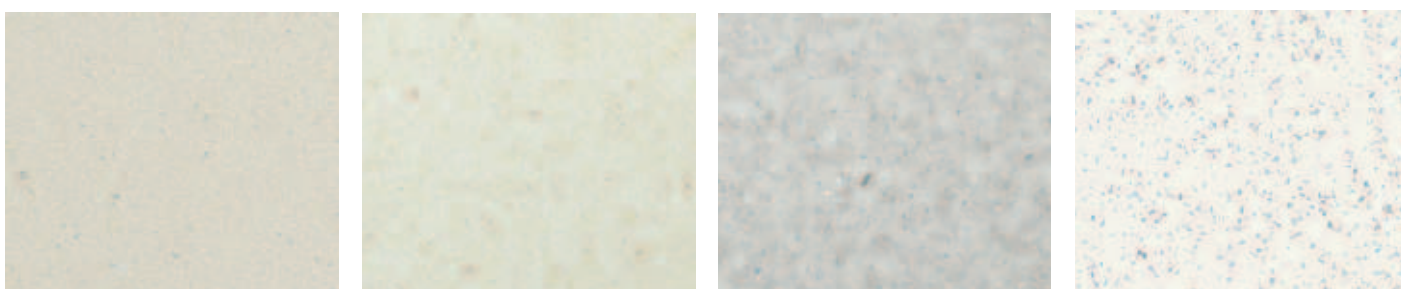
Grey Slate | Mika Grey Shuttered Concrete | Stone Natural Limestone | Stone Grey Lightning Stone | Matt



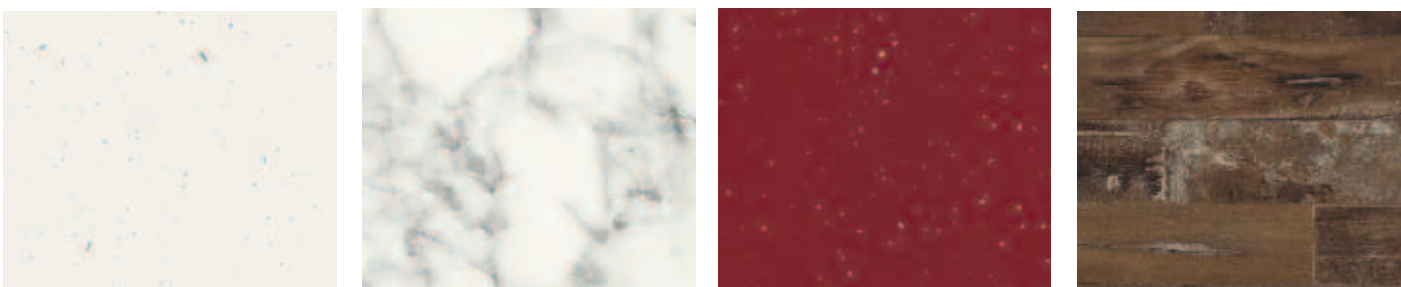
Grey Peppered Spark | Quartz Andromeda Storm | Quartz Corinthian Marble | Matt Italian Granite | Glaze



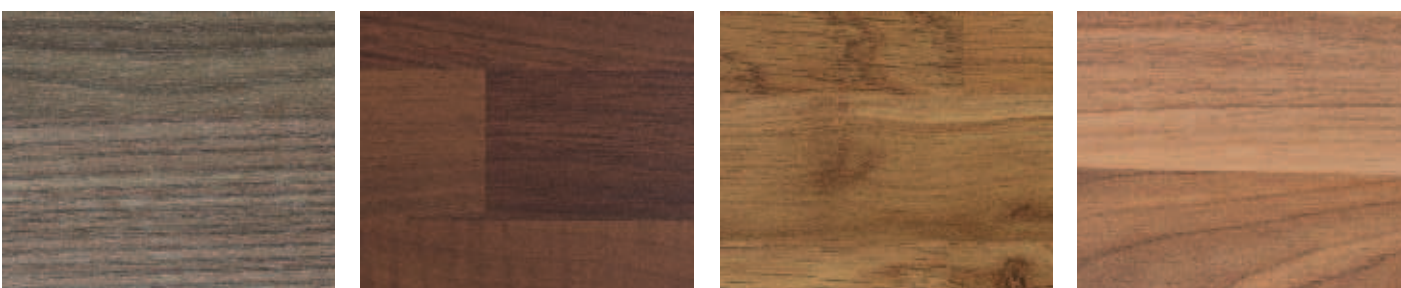
Dolce Vita | Nature Autumn Granite | Glaze Taurus Beige | Matt Sand Spark | Quartz



White Sirius | Sirius Light Cream Delight | Nature Andromeda Cloud | Quartz Snow Spark | Quartz



Andromeda White | Quartz Carrera Marble | Matt Andromeda Burgundy | Quartz Weathered Stavewood | Wood



Natural Elm | Matt Walnut Butcher Block | Matt Colmar Oak | Wood Blocked Oak | Matt



Cypress Cinnamon | Wood Walnut | Matt Natural Oak | Wood Shorewood | Wood

Keep your sample book safe by returning it to this position.



Bring your vision to life

Start designing your dream kitchen
or utility room with our handy
CurvedEdgesamplebook.

collection

CurvedEdge
Contemporary laminate surfaces

Finish in style

Product availability

DÉCOR NAME	TEXTURE	PRICE BAND	WORK SURFACES				UPSTANDS 3000 x 100 x 18mm	SPLASHBACKS 3000 x 1200 x 8mm
			3600 x 600 x 40mm	1800 x 600 x 40mm	3000 x 665 x 40mm	3000 x 900 x 40mm		
Andromeda Black	Quartz	C	■		■	■	■	■
Andromeda Burgundy	Quartz	C	■		■	■	■	■
Andromeda Cloud	Quartz	C	■		■	■	■	■
Andromeda Smoke	Quartz	C	■		■	■	■	■
Andromeda Storm	Quartz	C	■		■	■	■	■
Andromeda White	Quartz	C	■		■	■	■	■
Anthracite Artstone	Glaze	C	■	■	■	■	■	■
Autumn Granite	Glaze	C	■	■	■	■	■	■
Black Sirius	Sirius	C	■	■	■	■	■	■
Black Slate	Gloss	B	■		■	■	■	■
Black Slate	Satin	A	■	■	■	■	■	■
Black Spark	Quartz	C	■		■	■	■	■
Blocked Oak	Matt	A	■	■	■	■	■	■
Carrera Marble	Matt	A	■	■	■	■	■	■
Celtic Granite	Glaze	C	■	■	■	■	■	■
Colmar Oak	Wood	A	■	■	■	■	■	■
Corinthian Marble	Matt	A	■	■	■	■	■	■
Cypress Cinnamon	Wood	A	■	■	■	■	■	■
Dolce Vita	Nature	B	■	■	■	■	■	■
Grey Lightning Stone	Matt	A	■	■	■	■	■	■
Grey Peppered Spark	Quartz	C	■		■	■	■	■
Grey Shuttered Concrete	Stone	A	■	■	■	■	■	■
Grey Slate	Mika	C	■	■	■	■	■	■
Italian Granite	Glaze	C	■	■	■	■	■	■
Lava Sand	Matt	A	■	■	■	■	■	■
Light Cream Delight	Nature	B	■	■	■	■	■	■
Lunar Night	Glaze	C	■	■	■	■	■	■
Natural Elm	Matt	A	■	■	■	■	■	■
Natural Limestone	Stone	A	■	■	■	■	■	■
Natural Oak	Wood	A	■	■	■	■	■	■
Sand Spark	Quartz	C	■		■	■	■	■
Shorewood	Wood	A	■	■	■	■	■	■
Snow Spark	Quartz	C	■		■	■	■	■
Stone Spark	Quartz	C	■		■	■	■	■
Taurus Beige	Matt	A	■	■	■	■	■	■
Taurus Black	Satin	A	■	■	■	■	■	■
Walnut	Matt	A	■	■	■	■	■	■
Walnut Butcher Block	Matt	A	■	■	■	■	■	■
Weathered Stave Wood	Wood	A	■	■	■	■	■	■
White Sirius	Sirius	C	■	■	■	■	■	■

Keep your sample book safe by returning it to this position.



Bring your vision to life

Start designing your dream kitchen
or utility room with our handy
CurvedEdgesamplebook.

collection

CurvedEdge
Contemporary laminate surfaces

Please Note: We have price bands A, B and C, where A is the lowest price and C is the highest price. This is due to different levels of décor and texture sophistication.