

JEEP OFF-ROAD RACING CHAMPIONSHIP RULEBOOK



Attire Requirements

- SFI 3.2 fire suit
- SNELL or SFI approved racing helmet WITH shield or goggles.

Vehicle Safety Requirements

- ALL glass must be removed from vehicle. (windows/ windshield/back-glass)
- Racing seats (stock seats are not permitted)
- SFI approved window net
- SFI approved 5-point harness
- SFI approved fuel cell
- Batteries must be securely mounted in a battery box.
- A main "kill switch " must be mounted on the driver side rear of the vehicle.
- A rear-facing white light must be mounted for dust visibility.
- A charged fire extinguisher must be mounted within reach of the driver.
- Front and rear driveshaft loops are required.
- Two throttle return springs are required.

Cage Requirements

- Full roll cages with a 6-point minimum are required.
- The main cage tubing must be a minimum of 1 5/8" outside diameter and 0.120 wall thickness. (Diagram A)
- Must have an X brace behind the driver in the rear hoop. (Diagram A)
- An X-brace OR two horizontal bars are required in the door. (Diagram A)
- Two down bars from the main hoop are required. (Diagram A)
- On full framed vehicles- the cage must attach to the frame, not the body. (Diagram B)
- On unibody vehicles- the cage must be welded to a minimum of a 3/16" plate that is sandwiched between the body and the frame. (See diagram B)

DIAGRAM (A)

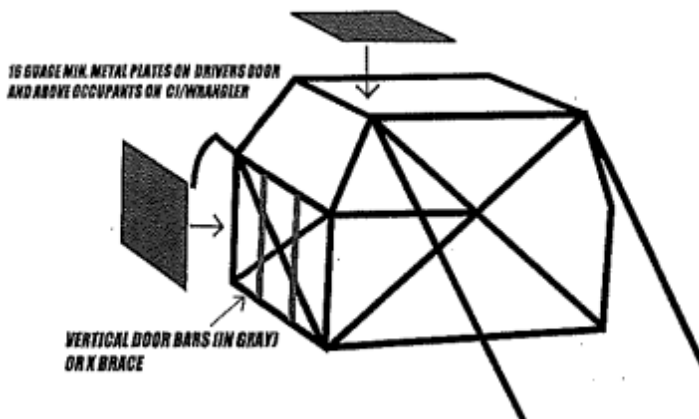
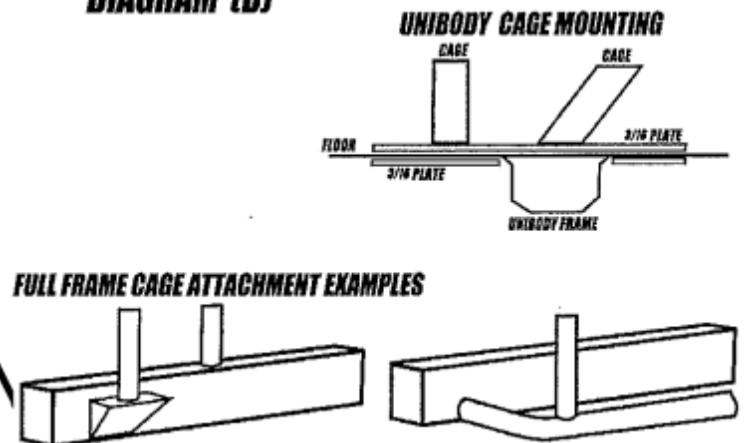


DIAGRAM (B)



JEEP CLASS TECHNICAL SPECIFICATIONS (Page 1 of 2)

Body/Chassis/Frame

- All bodies must remain stock. (Tubs and unibodies)
- Permitted Models: CJ, YJ, TJ, LJ, XJ, ZJ, WJ, MJ
- No removing or cutting of the body is permitted. (The amount of body being removed must be kept to a minimum to retain as much of the structural integrity intact as possible.)
 - *EXCEPTIONS are as follows:
 - Where mounting the fuel cell
 - Where mounting the cage to the frame
 - Where mounting the shocks to the cage.
- Trimming of the fenders is permitted if the inner fenders remain fully intact.
- Fender flares and fiberglass fenders are permitted.
- All unibody Jeeps are required to keep all doors and the hatch attached.
- Full frame Jeeps can remove the doors and top ONLY if they are replaced with a minimum of 16-gauge steel for safety. (See diagram A)
- All aftermarket or fabricated bumpers are permitted but must have rounded edges. Any bumper with sharp edges that could potentially puncture a tire are not permitted.
- On all CJ, TJ, LJ, YJ: The full steel tub must be kept intact.
- On all MJ/Comanche: The full bed and cab must remain intact.
- Short wheelbase Jeeps only & Wheelbase must be stock within +/- 2 in.
- The frame must remain stock. (Cutting to lengthen the wheelbase or gain suspension travel is NOT permitted)

Suspension/Steering

- Max track width of 77 inches, from outside of wheel to outside of wheel.
- Front and rear wheel travel is limited to 10 inches.
- Long travel kits are NOT permitted. (Must retain all stock suspension pivot points.)
- Bypass shocks of any type are NOT permitted. (Internal or external)
- Two shocks per wheel are permitted, with a max of 2 3/4" body.
- Rubber or Urethane bump stops only. (Hydraulic bump stops are NOT permitted.)
- Coil and leaf springs are permitted, but the mounting points CANNOT be altered,
- All stock axle brackets must remain intact. (Material may be added to strengthen/ gusset, but the control arm mounts, and coil pads must remain intact.)
- Control arms can be purchased or fabricated, but they must remain at stock length,
- Limit straps are permitted but not mandatory.
- Steering must remain stock. Hydraulic steering is NOT permitted.

Tires/Wheels/ Brakes

- Maximum Tire Size is 33 inches.
- Maximum Wheel Size is 17 inches.
- Must have a properly operating 4-wheel brake system.
- Must run the stock (OEM) brakes that came from factory.
- Steering brakes are permitted ONLY on the rear axle.

Drivetrain/Transmission

- Straight axles that are permitted: Dana 30, 35, 44 only. (No Ford 9 in. or 8.8)
- Aftermarket axles are permitted, but they must be stock replacements with factory style brackets.
- Stock Jeep transfer cases that are permitted: NV231, NV242, NV249, NV247, Dana 300, Dana 20.
- The Jeep can be either 2WD or 4WD. *
- Only stock transmissions are permitted. (Automatic or manual)
- Each model must be kept in the factory configuration that was originally available for that model.

Engine/Fuel System

- Inline 4 cylinder or inline 6-cylinder engine: 2.5-liter, 4.0-liter, and 258/232 cubic inch,
- All engines must run the stock fuel/injection system it was built with from the factory.
 - For example, a CJ must run with a carburetor and factory ignition (no MSD).
 - For example, a ZJ must run with OEM EFI (no carburetor).
- Aftermarket fuel injection systems or programmers are NOT permitted.
- Only stock intake manifolds, throttle bodies, and carburetors are permitted.
- All injectors must be stock size and fit in the fuel rail with no modifications to the rail and or wiring.
- Stroker kits, aftermarket heads, or cylinder modifications are NOT permitted.
- Engines must remain in the original location.
- Engines may only be bored to 0.60 for rebuilding,
- Radiators may be relocated to the rear of the vehicle, but the lines must be shielded for drivers' protection.

SUPER STOCK 4X4 TRUCK TECHNICAL SPECIFICATIONS (1 of 2)

Body/Chassis/Frame

- The wheelbase may be no longer than 120.5 inches.
- The maximum overall width, at stationary ride height is 84 inches, measured from the outside most part of the tires or wheels.
- Stock frame must be retained and used from the most forward attachment of any front suspension component to the center of rear axle.
 - For example, front frame horns may be removed but the stock frame must be in place where front of an arm or leaf spring bolts on.
- A-arm pivot points must remain in stock locations for the chassis chosen.
- Boxing, gusseting, and plating are permitted.
- Reworking a frame to reduce weight, lower the center of gravity or increase wheel travel such as channeling, kicking or replacing large sections with non-OEM metal is NOT permitted.
- All vehicles must have a minimum weight of 3500lbs. (10lbs per cubic inch)

Suspension/Steering

- Anti-wrap devices are permitted,
- Hydraulic bump stops are permitted with a 4-inch maximum travel.
- Sway bars are permitted.
- The maximum wheel travel front and rear is 14 inches.
- No limit to shock quantity per wheel: 2 inch diameter.
- Only one shock is permitted per wheel: 2 1/2 inch or 3-inch diameter.
- Remote reservoir canister shocks are permitted.
- External valves and bypass shocks are NOT permitted.
- Three or four link rear suspensions or any type of spring are permitted.
- Coil springs, coil carriers, and coil over shocks are permitted on front suspension,

SUPER STOCK 4X4 TRUCK TECHNICAL SPECIFICATIONS (2 of 2)

Tires/Wheels/ Brakes

- Any stock or aftermarket combination of brake components is permitted. (The vehicle will be required to demonstrate that all four wheels lock, prior to racing.)
- Maximum tire size is 35 inches.
- Must be DOT tires. Project tires are NOT permitted.

Drivetrain/Transmission

- Any combination of manufactured and/or aftermarket components is permitted.
- A conventional drive system must be used.
- NO aftermarket under/over drive, or viscous drive units are permitted.
- All parts must be available at normal retail outlets.
- Must use OEM transfer case and must bolt onto transmission as originally designed.

Engine/Fuel System

- Maximum engine size is 460 cubic inch displacement.
- Heads must have intake and exhaust chambers in stock configurations.
- Must retain OEM block.

Permitted

- Head porting or polishing
- Roller cams
- Piston changes
- Bore and stroke changes
- Rod and crankshaft changes
- Cooling and oiling modifications
- Only 1 four-barrel or two-barrel carburetor is permitted.

NOT Permitted

- Dry sumps
- Titanium connecting rods/crankshafts
- Aluminum engine blocks
 - Unless OEM for that chassis
- Blowers, superchargers, turbochargers, water vapor injection, nitrous injection.

SXS COMBINED CLASS RULES (1 of 1)

- All vehicles must have a minimum of 2.5 lb. ABC rated dry chemical extinguisher mounted inside the cockpit.
- A functioning brake system is required on all 4 wheels.
- Aftermarket roll cages are recommended but not required.
- A minimum 4-point harness is required.
- All driver side windows must have an approved safety net capable of keeping the driver's arms inside the vehicle in the event of a rollover. If window nets are not used wrist restraint will be required.
- Steel or aluminum firewall between the driver and engine compartment is recommended but stock plastic is allowed if the area between the driver and engine is completely covered.
- Steel or aluminum floor pans are recommended but stock plastic is allowed if the area is completely covered.
- No external pressurized fuel vessels are allowed.
- All classes are intended for (1) driver and NO passengers.
- All vehicles must have a visible number located behind the driver above the rear wheel on both sides of the vehicle that are easily read from the scoring tower or flag stand.
- Plastic or metal roof is required. Must be securely fastened.

PRO N/A CLASS (NON-TURBO)

- Must use manufactures engine/ transmission intended for the vehicle.
- Engine/Transmission/ ECU modifications are allowed.
- Aftermarket exhaust and intakes are allowed.
- Suspension modifications are allowed.
- Wheel spacers are allowed.
- Turbos are NOT allowed.

PRO MOD CLASS (TURBO)

- Must use manufactures engine/ transmission intended for the vehicle.
- Engine/Transmission/ ECU modifications are allowed.
- Aftermarket exhaust and intakes are allowed.
- Suspension modifications are allowed.
- Wheel spacers are allowed.
- Turbos ARE allowed.