

# Kitsap Homes of Compassion



---

Madison Roszak (she/her)  
*Housing Program Manager*

Madison.Rozak@KitsapHOC.org

# What is KHOC?

Kitsap Homes of Compassion is a 501c3 nonprofit established in 2017. KHOC creates cost-effective long-term supportive housing solutions to end homelessness in Kitsap County. Case management services to help find and keep safe and stable housing are available to anyone- in or out of KHOC housing.

KHOC's mission is to create hope and opportunity for homeless Kitsap County residents by providing affordable, permanent housing and other resources that promote self-sufficiency and thriving instead of just surviving.



# Kitsap Homes of Compassion Programs

## **FCS**

Foundational Community Supports (FCS) is similar to Housing First, but is funded through Medicaid. Case management services are provided by Housing Navigators.

## **Housing First**

Housing First case management services are provided by Housing Specialists and Peer Support Counselors through a grant from the Washington Health Care Authority.

## **KHOC Housing**

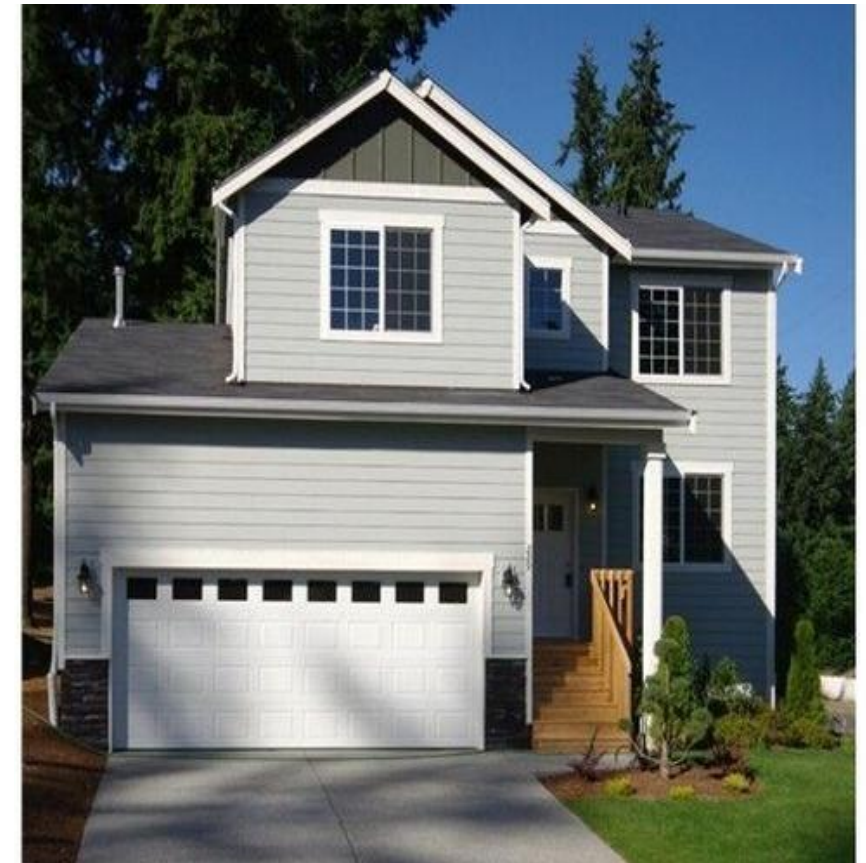
KHOC leases 25 homes across the county and sublets rooms to folks experiencing homelessness. Residents pay an affordable monthly fee for a private bedroom and access to shared common areas.

# KHOC Housing

KHOC uses a cost-effective, long-term permanent supportive housing model.

KHOC creates master leases with homeowners and sublets rooms out to folks experiencing homelessness/housing insecurity for an affordable monthly rent.

KHOC currently serves approximately 100 individuals in 26 homes across Kitsap County (more coming soon!).



# KHOC HOUSING PROGRAM

## CONTINUUM OF HOUSING

### SHELTER

### TRANSITIONAL

### PROGRAM

### PSH

### LOW WAGE

PARTNER  
AGENCY  
PROVIDED

PARTNER  
AGENCY  
PROVIDED

- Higher need residents
- Staff House Manager
- Housing Navigator assigned by program
- Foundational Community Support priority
- Minimum Weekly House Meetings

- Residents have more stability
- Long-term housing
- Volunteer or Staff House Manager
- Housing Specialist/ Navigator or Peer as needed
- Minimum bi-monthly house meetings

- Low wage earner employed housing
- Staff House Manager will provide low oversight
- House Meetings as needed
- Navigators or Peers as needed, short term



# FCS Program

Foundational Community Supports (FCS) is a state-run program offering benefits for supportive housing to people that are eligible for Apple Health (Medicaid) and have complex needs. The program is very similar to Housing First services, but the funding stream is different.

FCS services provide opportunities for program participants to work one-on-one with a Housing Navigator to assess strengths and barriers to finding and maintaining housing.



# HF Services

Housing First says: **homelessness is, first and foremost, a housing crisis.**

HF prioritizes people's basic needs, like shelter, above less critical necessities such as employment, income, or sobriety. **Everyone is housing ready.**

Eligibility:

- experiencing homelessness or housing instability
- income not exceeding 50% of Kitsap's median income
- must have a mental health need and/or have current or past use of substances



# Typical "Housing Readiness"



---

## Housing First

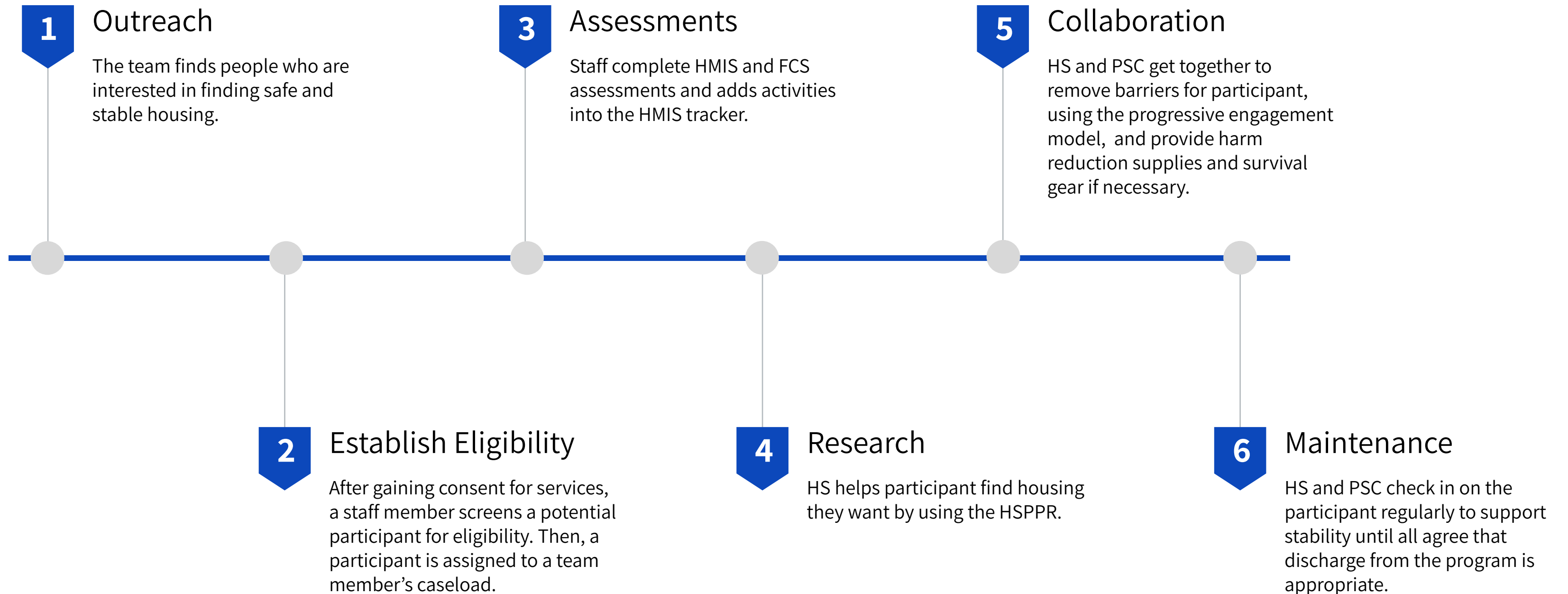




# Intake Process and Staff Activities

# Roadmap

## The Housing First Services Process



# Housing Specialists/ Navigators



Housing Specialists/Navigators work with participants to identify housing goals and work together to find realistic options that satisfy the client.

This work includes:

- Straightforward presentation of options
- Client-led goal setting
- Optional connections to PSC
- Connection to funding resources in the community
- Searching for realistic housing options based on a client's goals
- Helping clients settle into housing and adjust to being housed and/or potentially living with other people
- Home visits (with client approval)

# Peer Support Counselors

Peers provide connections to support resource access that supports goals that leads to further housing stability.

This includes empowering participants in:

- Choosing to access services
- Participant-led recovery
- Creating personal short-term and long-term goals
- Finding resources to achieve goals
- Maintenance check-ins during transition into housing
- Accessing counseling services



# Outreach Strategies

- Referrals
- Advertisement
- Website applications
- Community events
- Local partnerships



# The Online Application

**Are you interested in receiving housing support case management services to help remove barriers you may have encountered when attempting to find and keep stable housing?** *By selecting YES you understand that you are consenting to receiving services that are unaffiliated with the KHOC Housing Program. You must be in Kitsap County to receive these services.*

-- Please select one -- 

**Would you like to apply for KHOC Housing?**

-- Please select one -- 

[khoc.homes/apply](https://khoc.homes/apply)

# Housing Stability Plan and Progress Record (HSPPR)

Provided by Kitsap County

## KHOC – Housing Stability Plan and Progress Record Form (HSPPR)

Name: \_\_\_\_\_ HMIS #: \_\_\_\_\_ Staff Name: \_\_\_\_\_

**Strengths** – What are things that you already have that could help you find and keep stable housing? (This can include skills, personal traits, resources, connections, ideas or other things)

\_\_\_\_\_

\_\_\_\_\_

\_\_\_\_\_

**Barriers** – What are the things getting in the way of finding or keeping stable housing? (This should include things that you have some control over.)

\_\_\_\_\_

\_\_\_\_\_

\_\_\_\_\_

Date Goal Set	Goal	Action Steps	Complete by when?	Date Completed

We commit to collaboratively work towards the goals listed above.

Signature: \_\_\_\_\_ Staff Signature: \_\_\_\_\_ Date: \_\_\_\_\_ Version 12/12/19

### Barrier Removal Services

*All Housing First program participants are allotted funds for support services.*

*Please choose from the following options:*

#### Rent/Utilities

- Past due rent
- Past due utilities
- Rental assistance (2 months max)
- Transitional housing fees
- Other:

**Total amount:**

#### Identification Documents

- Drivers license
- State ID card
- Birth certificate
- Social security card
- Other:

**Total amount:**

#### Application Fees/Deposit

- Application fees
- Deposit
- Background check
- Other:

**Total amount:**

#### Transportation

- Bus tokens

# HF Barrier Removal Checklist

We provide options for participants to choose what supports they need the most.

**Client choice is essential!**

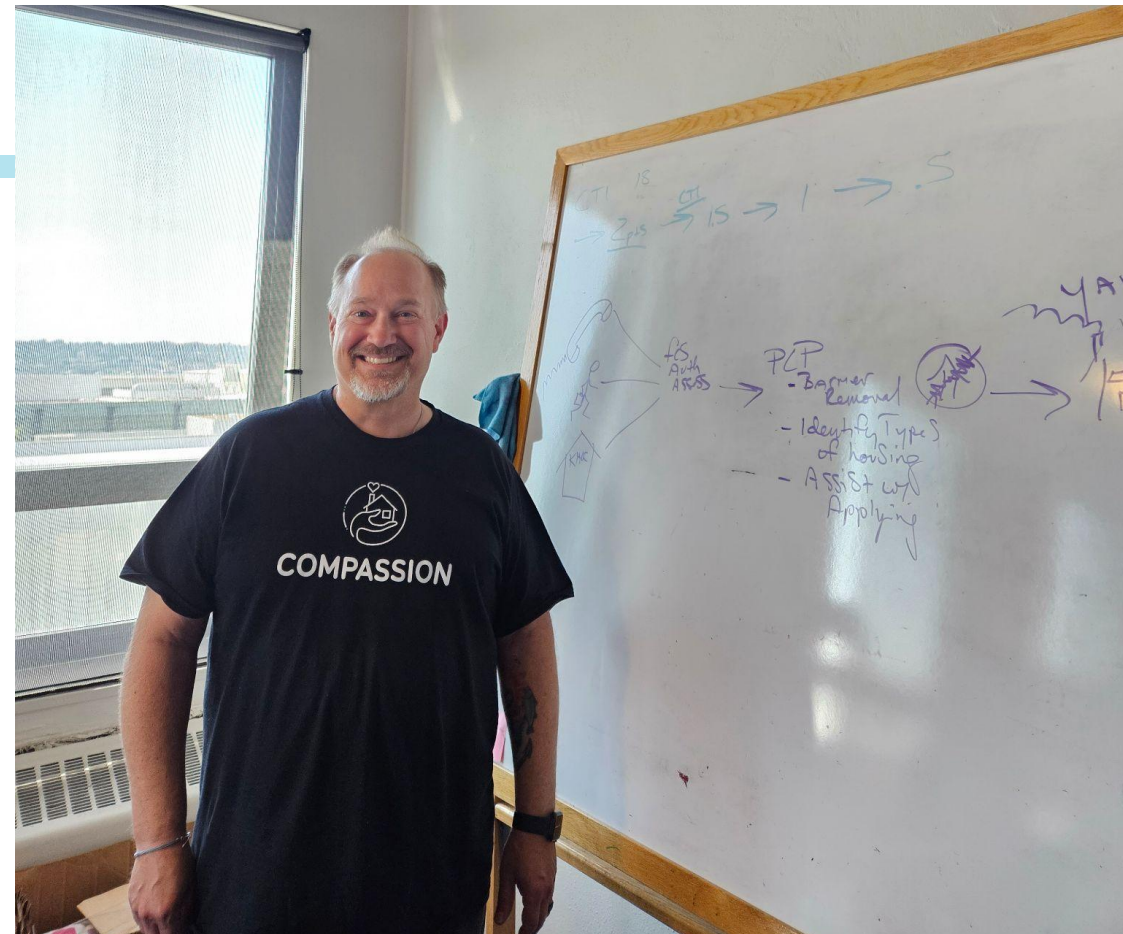
---



“I just needed  
someone to take a  
chance on me”

– Anonymous Participant

# KHOC T-Shirt/Hoodie Drive





**KITSAP HOMES**  
**of Compassion**

[Madison.Roszak@KitsapHOC.org](mailto:Madison.Roszak@KitsapHOC.org)

360-362-4326