



In Elementary School

Impact of the School of the Greats

School of the Greats supports elementary school students from underprivileged communities by pairing them with college and university mentors. With a hands-on approach to homework help in French and math, plus engagement in science awareness activities, the program boosts academic success—while offering meaningful leadership experience to mentors.

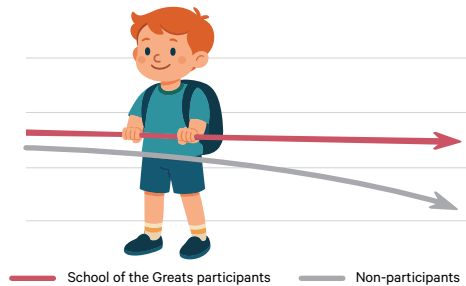
Committed to advancing educational equity for both primary students and postsecondary mentors, the Fondation W. conducted a rigorous analysis of the program's impact on the academic success of elementary school participants with data **from 2016 to 2023**.

Comparative analysis of participating students vs. peers not enrolled in the program:

Math grades

For both boys and girls, the program helps prevent the common decline in math performance during the year.

Result: Stable grades for both genders



In math, at-risk boys (grades between 50% and 70%) benefited notably from the program, avoiding the 9% drop seen among their non-participating peers.

Result: Stable performance among at-risk boys



French grades

At-risk girls (average grades between 50% and 70%) showed improvement in French, even among those not in the program.

Result: Improved grades among girls

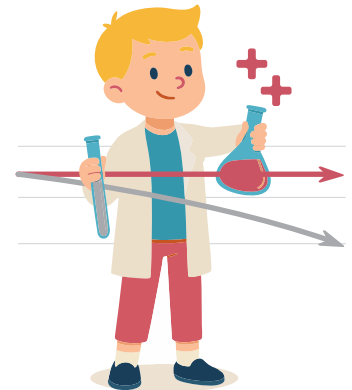
Note: The improvement cannot be directly attributed to the School of the Greats

No significant gains observed among boys

Science grades

Among non-participants, science grades declined by 3.2%. In contrast, boys in the program were able to maintain their performance throughout the year.

Result: Stable science grades for boys



— School of the Greats participants — Non-participants

elementary schools in underprivileged areas across Quebec, located within school boards where dropout rates meet or exceed the provincial average. Conducted by researchers from Université de Montréal, UQAM, ÉCOBES, and the Fondation W. Results pending publication in a peer-reviewed journal.

School of the Greats: Building equity in education by creating real pathways to success for vulnerable youth.

For more information or to donate: www.schoolofthegreats.com

Alisha Wissanji, Ph.D.
Chief Executive Officer, Fondation W.
direction@fondationw.com