

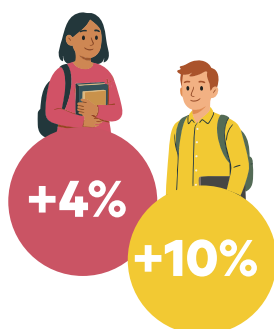
**In College**

## Impact of the School of the Greats

The School of the Greats is an after-school mentorship program that connects elementary school students from underprivileged communities with college and university mentors. Through a focus on academic support in French and math, as well as science AW are was activities, the program promotes educational success. It builds resilience for both the young learners and their mentors.

A rigorous, ethically driven evaluation conducted by the Fondation W. assessed the program's impact on key indicators of post-secondary success **between 2016 and 2023**.

*Comparative analysis of the School of the Greats college mentors vs. college students involved in other extracurricular activities and those not involved in campus life activities:*



### Social Adaptation

Mentors in the program experienced meaningful improvements in their social adaptation:

**+4% among women**  
**+10% among men**



### Self-Perceived Academic Competence

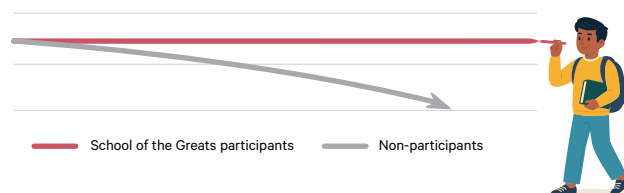
Male mentors reported a significant boost in their sense of competency in their studies:

**+4% among men**

No significant change among women

### Intrinsic Motivation in their studies

While intrinsic motivation tends to decline among male students not involved in campus life activities (-5.4%), School of the Greats mentors **maintained strong intrinsic motivation towards their studies**—a critical factor for their educational success.



### Sense of Autonomy in their studies

**+4% among men**

The program also positively impacted mentors' sense of autonomy in their studies:  
**+4% among men**

No significant change among women

Source: Data from a 2016–2023 study (excluding pandemic years), based on 399 college students across 7 CEGEPs in 5 different administrative regions. Conducted by researchers from Université de Montréal, UQAM, ÉCOBES, and the Fondation W. Findings to be published in a peer-reviewed journal.

**School of the Greats: Building equity in education by creating real pathways to success for vulnerable youth.**

For more information or to donate: [www.schoolofthegreats.com](http://www.schoolofthegreats.com)

Alisha Wissanji, Ph.D.  
Chief Executive Officer, Fondation W.  
[direction@fondationw.com](mailto:direction@fondationw.com)

